

V&V Reference Report

L2 ASCDS Version : 7.6.9

Observation 1013 - L2 Version 001
Chandra X-Ray Center

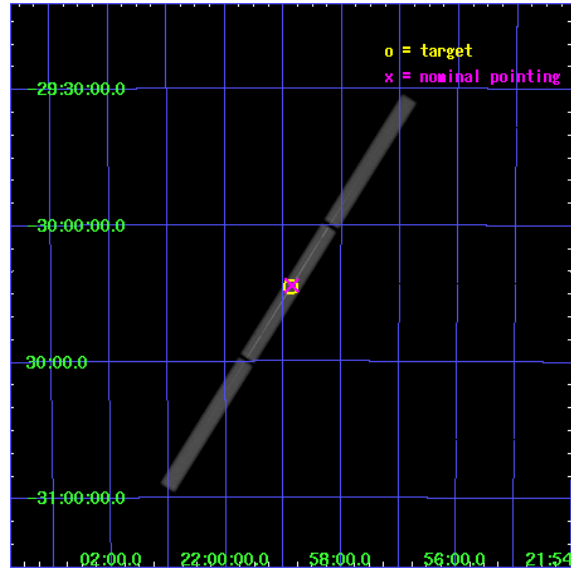
L2 Processing Date : Nov 13 2006

Contents

1	Front	2
2	OBI	3
2.1	OBI	3
2.1.1	Images	3
2.1.2	Parameters	4
2.1.3	Events	4
2.2	Compared Parameters	5
2.3	Aspect	6
2.4	Star Slots	9
2.4.1	Slot 3	9
2.4.2	Slot 4	10
2.4.3	Slot 5	11
2.4.4	Slot 6	12
2.4.5	Slot 7	13
2.5	FID Slots	14
2.5.1	Slot 0	14
2.5.2	Slot 1	15
2.5.3	Slot 2	16
3	Gratings	17
3.1	LETG Arm	17
A	Summary	19
A.1	Status	19
A.2	Comments	19

1 Front

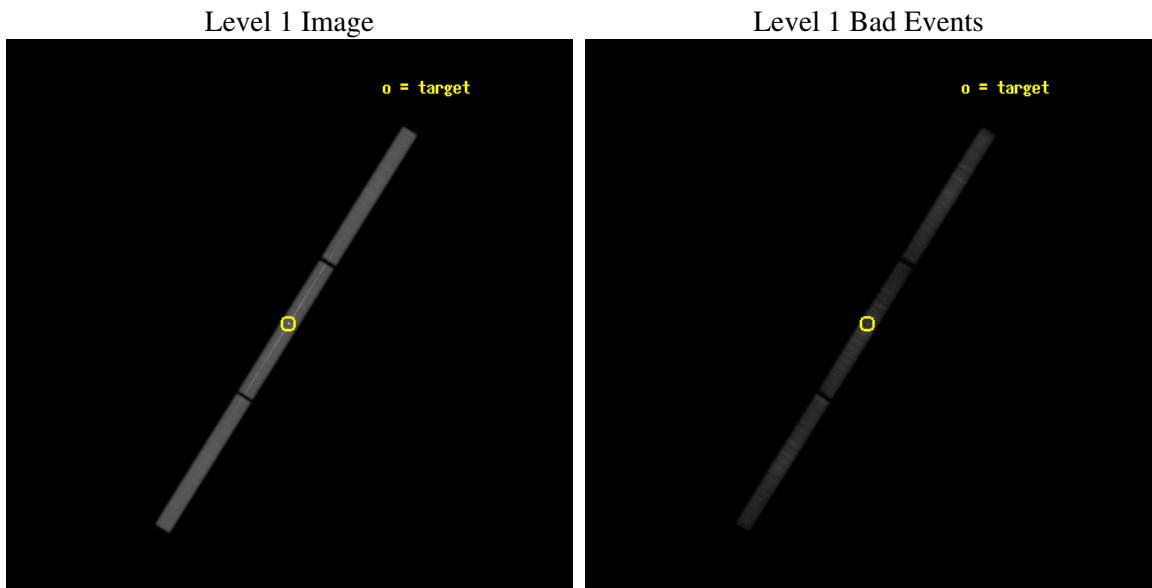
seq_num	390005
obs_id	1013
title	GRATINGS CALIBRATION OBSERVATIONS OF PKS2155-304
observer	Dr. CXC Calibration
object	PKS2155-304
ra_targ	329.716667
dec_targ	-30.225556
ra_nom	329.71389913457
dec_nom	-30.221423405719
roll_nom	122.20178000013
revision	3
ontime	26832.707289279
livetime	26628.476142611
l2events	1619024



2 OBI

2.1 OBI

2.1.1 Images



2.1.2 Parameters

obi_num	1
ascdsver	7.6.9
caldbver	3.2.4
date	2006-11-13T15:40:47
revision	3

sched_exp_time	27000.000000
ontime	26912.401042372
l1events	2351934

2.1.3 Events

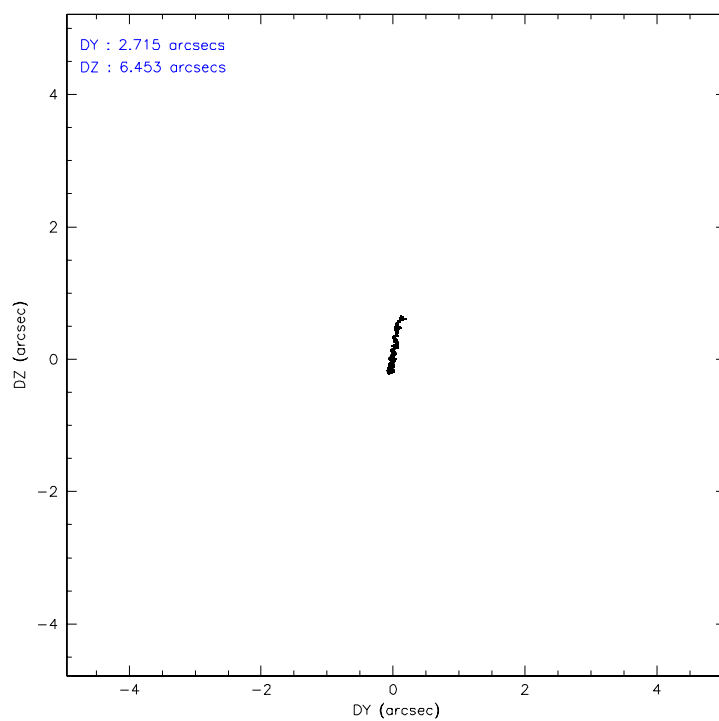
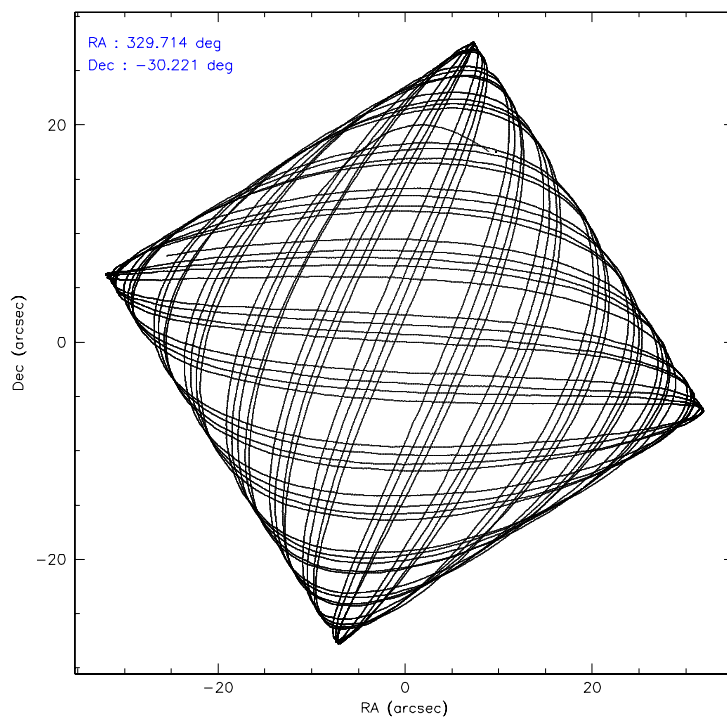
Level 1 Events

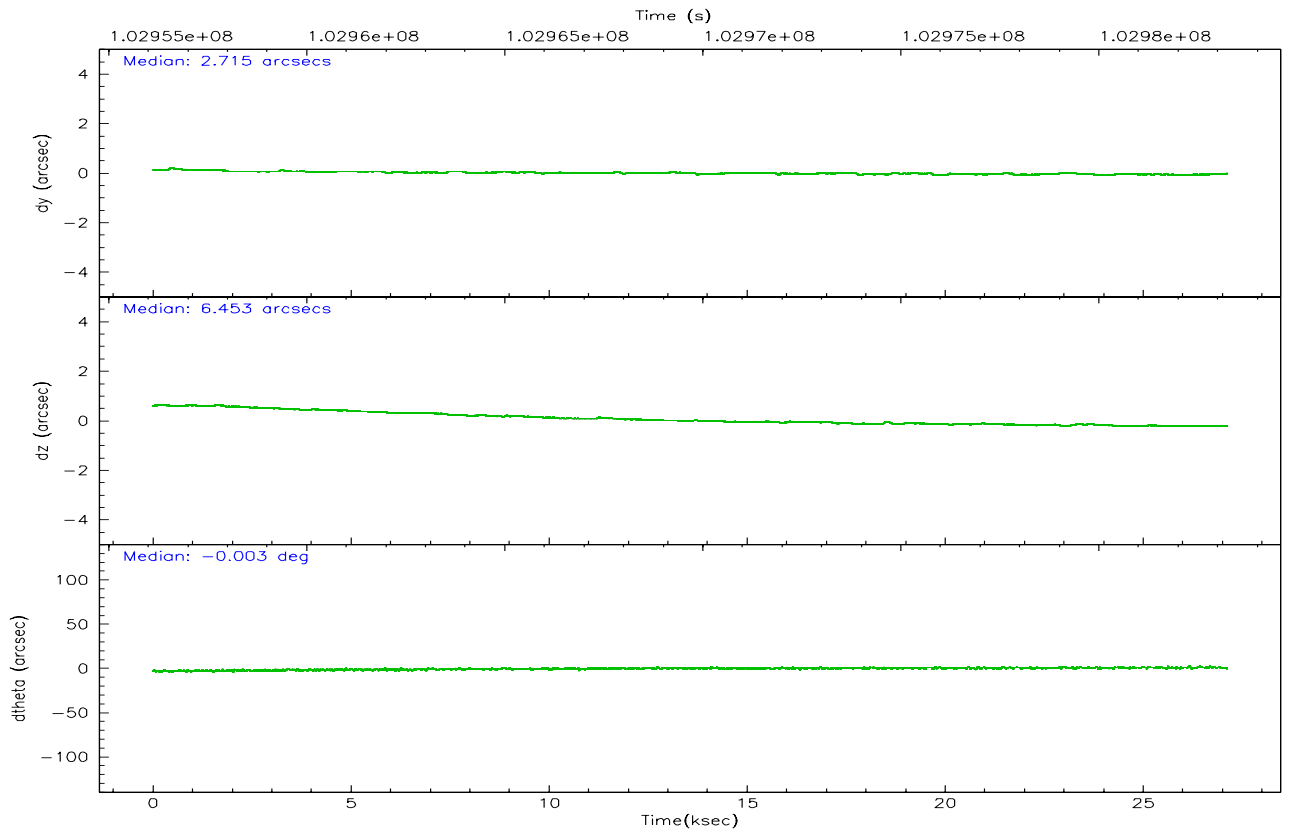
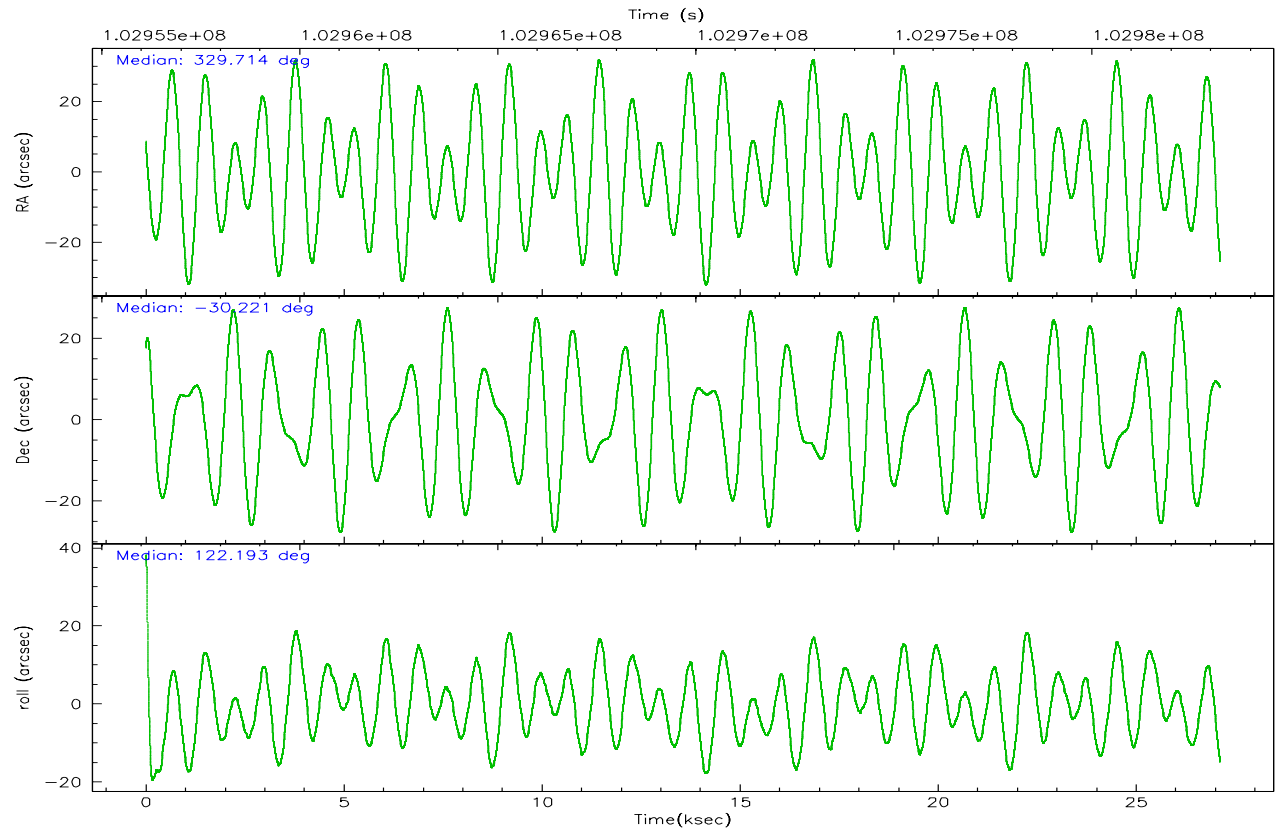
	segment 1	segment 2	segment 3
level 1 events	765079	847522	739333
rejected events	169609	177406	198553
rejected %	22%	20%	26%

2.2 Compared Parameters

Parameter	Planned	Actual	Parameter	Planned	Actual
Instrument	HRC	HRC	Obspar format version number	6	6
Detector	HRC-S	HRC-S	Obspar file type	PREDICTED	ACTUAL
Grating	LETG	LETG	Obspar update status	NONE	UPDATED
Data mode	OBSERVING	OBSERVING			
Observation mode	POINTING	POINTING			
Pointing RA	329.743927	329.7138991345689			
Pointing Dec	-30.233594	-30.2214234057194			
Pointing Roll	122.149541	122.2017800001318			
Window start time	99792064.184000	99792064.184000			
Window stop time	105148864.184000	105148864.184000			
SIM focus pos (mm)	-1.429586	-1.428180813131781			
SIM defocus (mm)	0.1037507710433287	0.1051558262725154			
SIM translation stage pos (mm)	250.455976	250.466033080201			
SIM translation stage offset (mm)	0	-0.01005468664627074			
Observation start time	102956240.184000	102955192.76978			
Observation start date	2001-04-06T14:56:16	2001-04-06T14:39:52			
Observation end time	102983240.184000	102984263.30841			
Observation end date	2001-04-06T22:26:16	2001-04-06T22:44:23			

2.3 Aspect



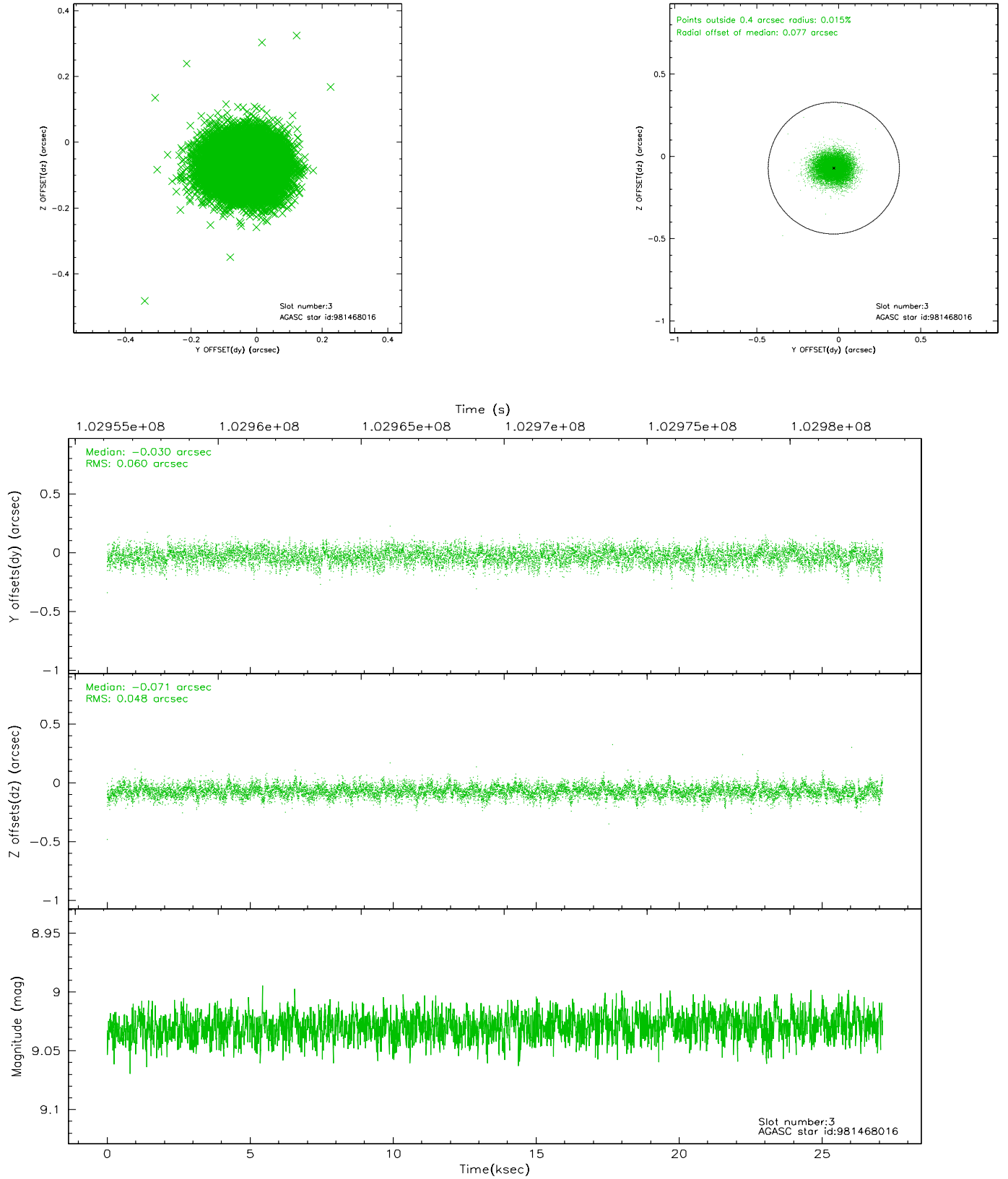


Slot Statistics

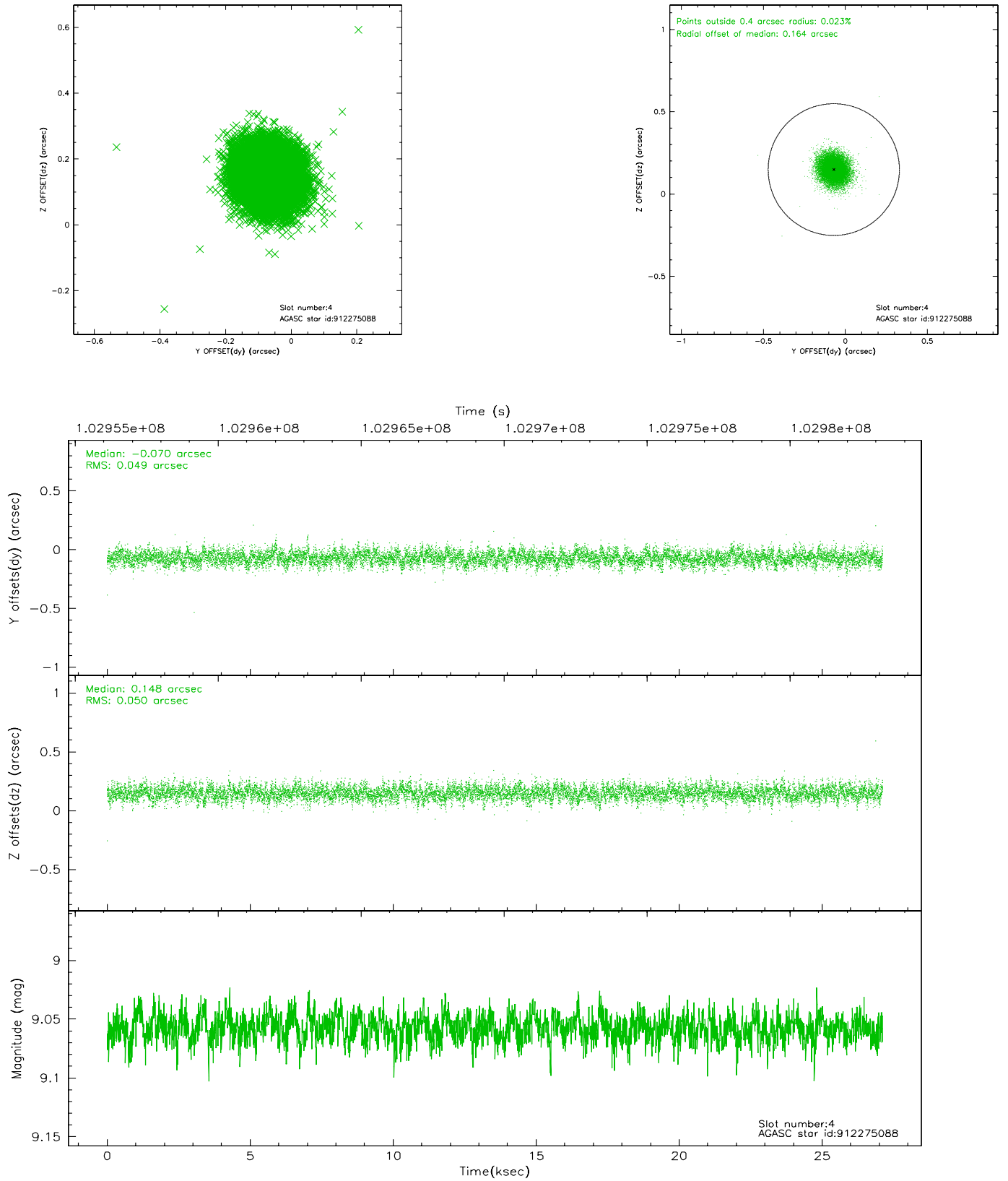
slot	status	id	mag	n_pts	med_dy	med_dz	dr1	dr2	ra	dec	mean_y	mean_z
0	FID	HRC-S-1	7.00	6614	0.137	-0.120	0.015	0.028	0.000000	0.000000	-1156.76	-455.06
1	FID	HRC-S-2	7.00	6615	0.111	-0.095	0.005	0.009	0.000000	0.000000	1242.72	-447.77
2	FID	HRC-S-3	7.02	6615	0.142	-0.086	0.016	0.031	0.000000	0.000000	-1159.28	574.43
3	GUIDE	981468016	9.03	13227	-0.030	-0.071	0.082	0.133	328.842457	-30.034984	2090.56	2004.04
4	GUIDE	912275088	9.06	13222	-0.070	0.148	0.074	0.120	329.619228	-29.738698	1715.74	-617.76
5	GUIDE	981478152	9.40	13228	0.016	-0.146	0.078	0.133	329.415589	-30.057192	1080.77	528.63
6	GUIDE	981468128	9.36	13227	0.178	0.146	0.088	0.146	329.756350	-30.158334	208.95	-177.10
7	GUIDE	981469488	9.60	13220	-0.094	-0.077	0.097	0.158	329.261199	-30.045155	1371.83	914.09

2.4 Star Slots

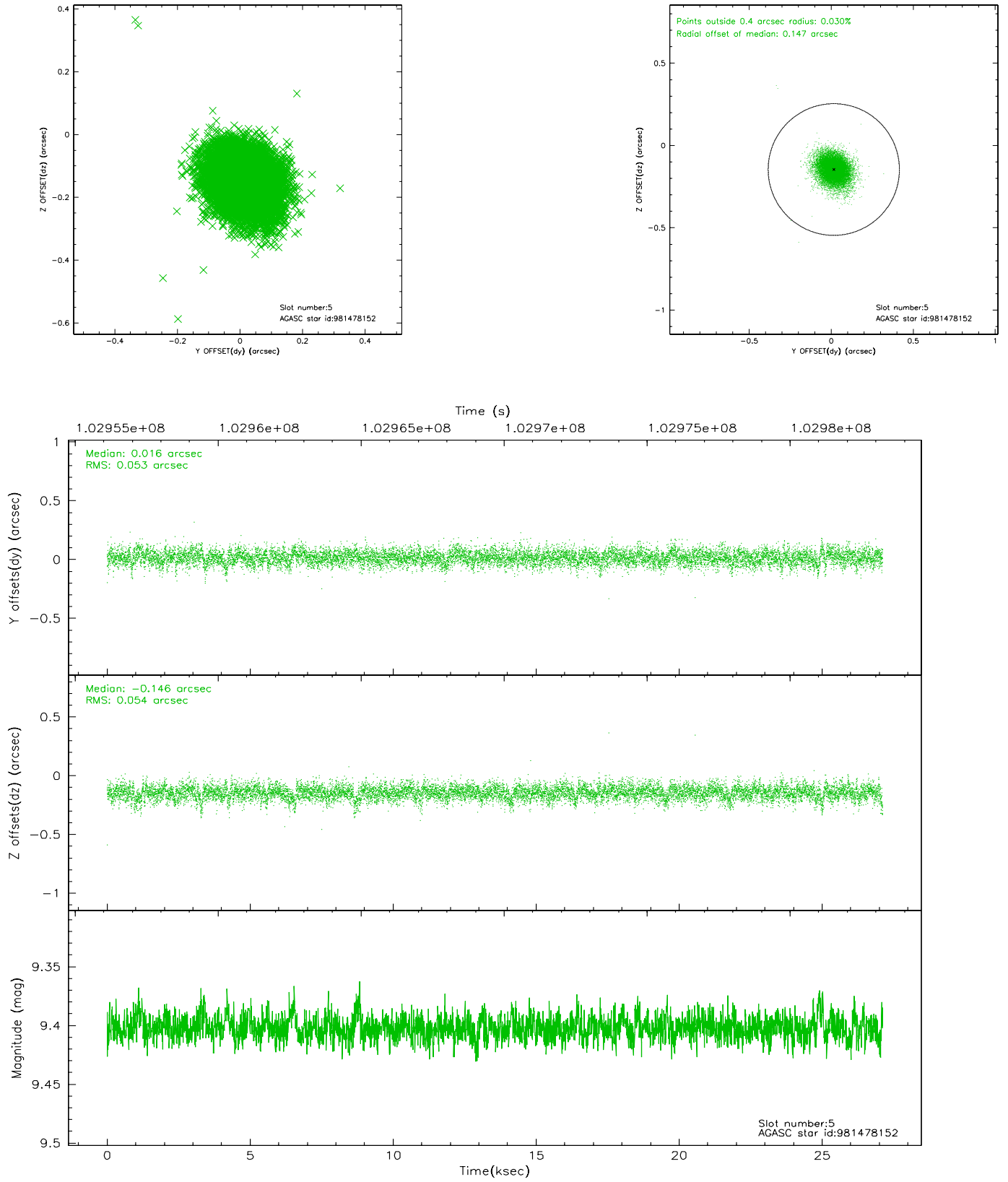
2.4.1 Slot 3



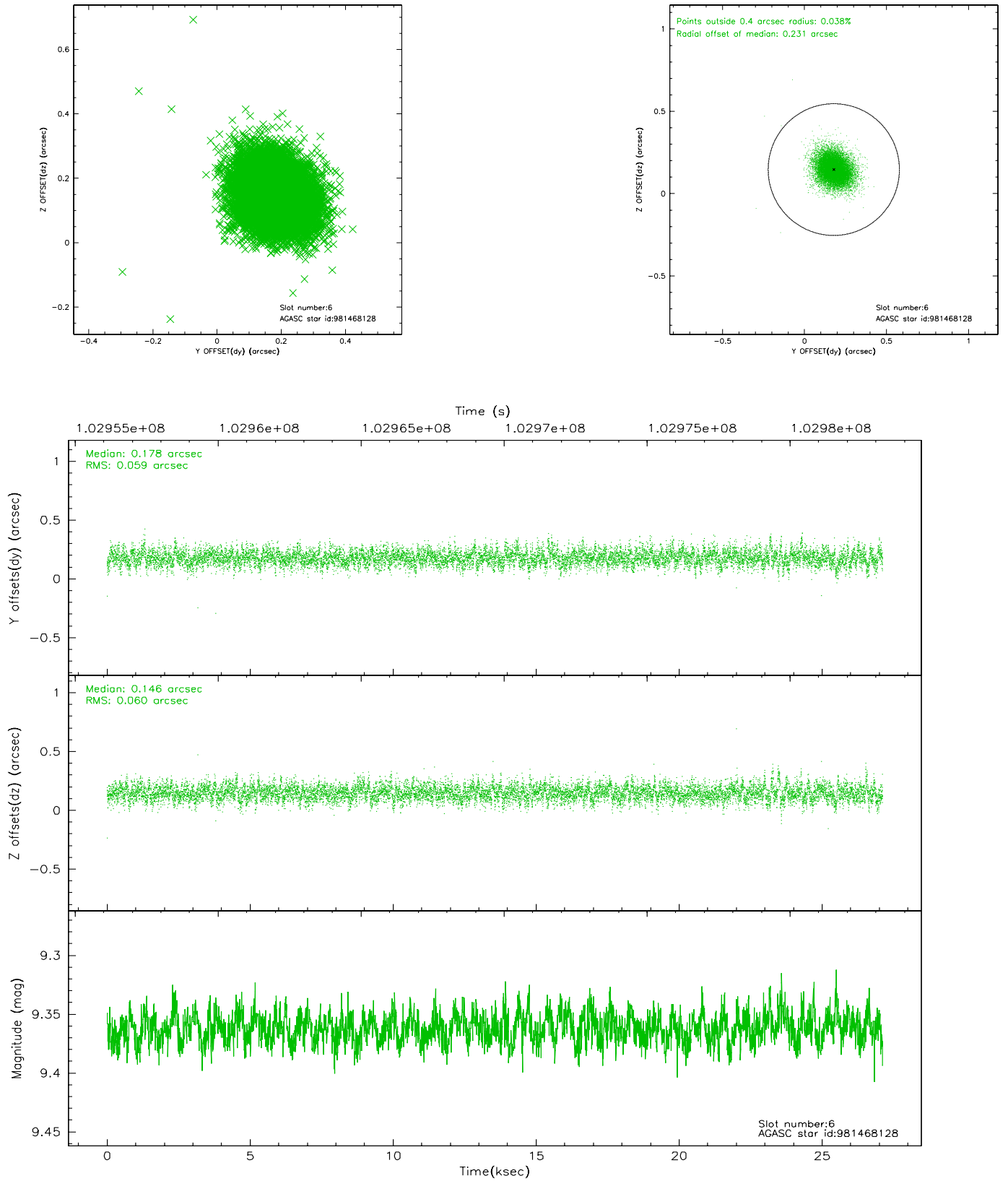
2.4.2 Slot 4



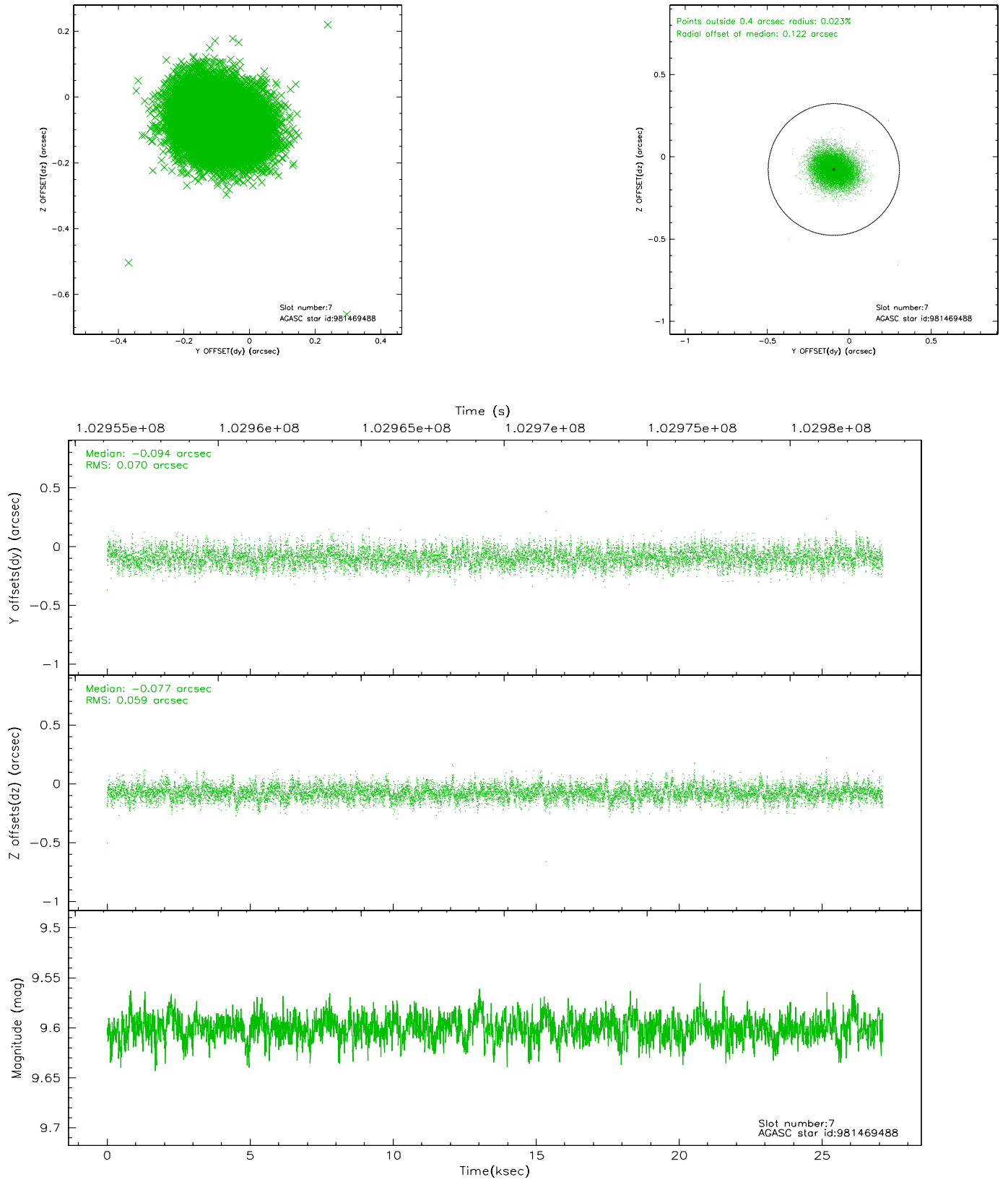
2.4.3 Slot 5



2.4.4 Slot 6

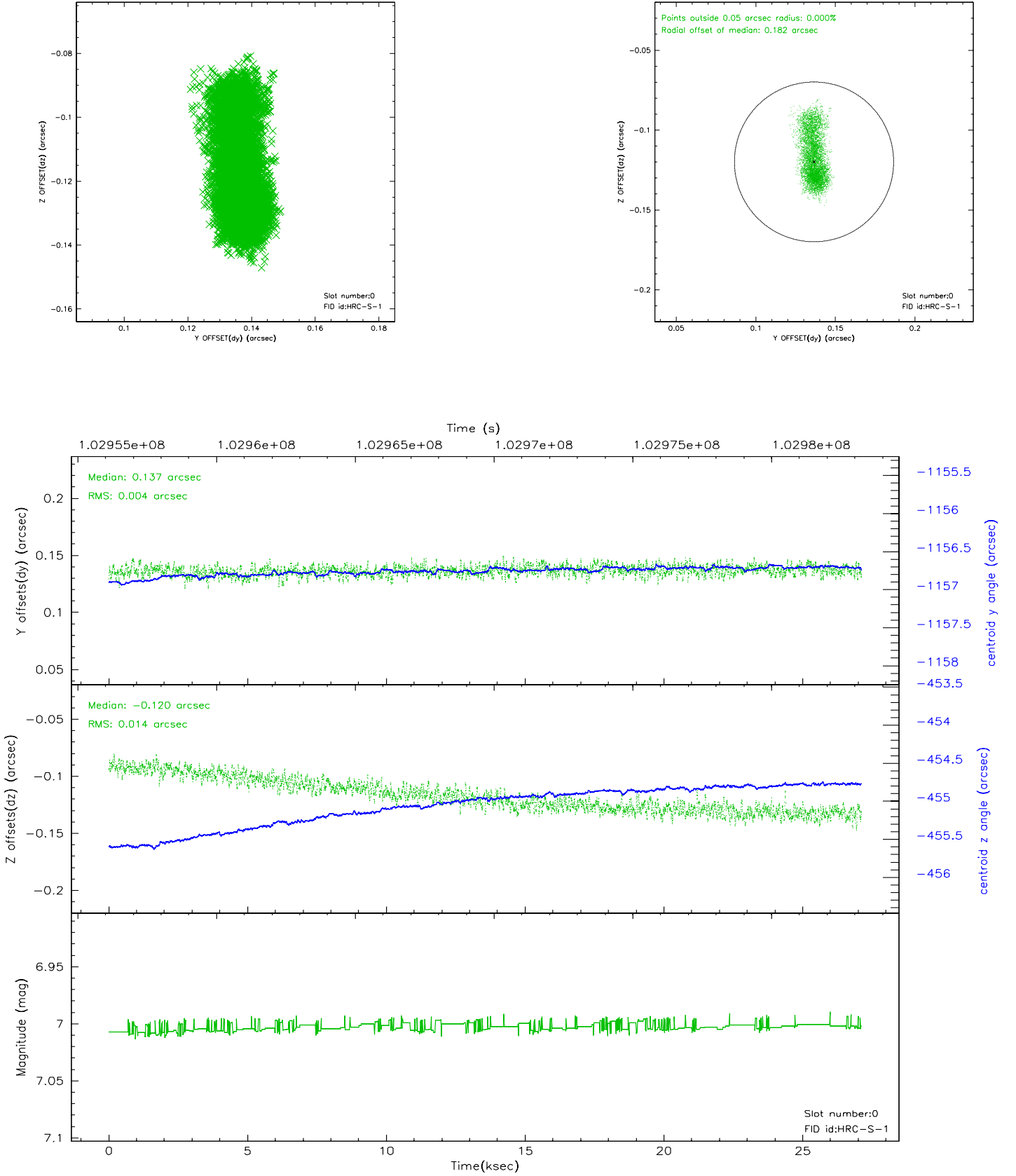


2.4.5 Slot 7

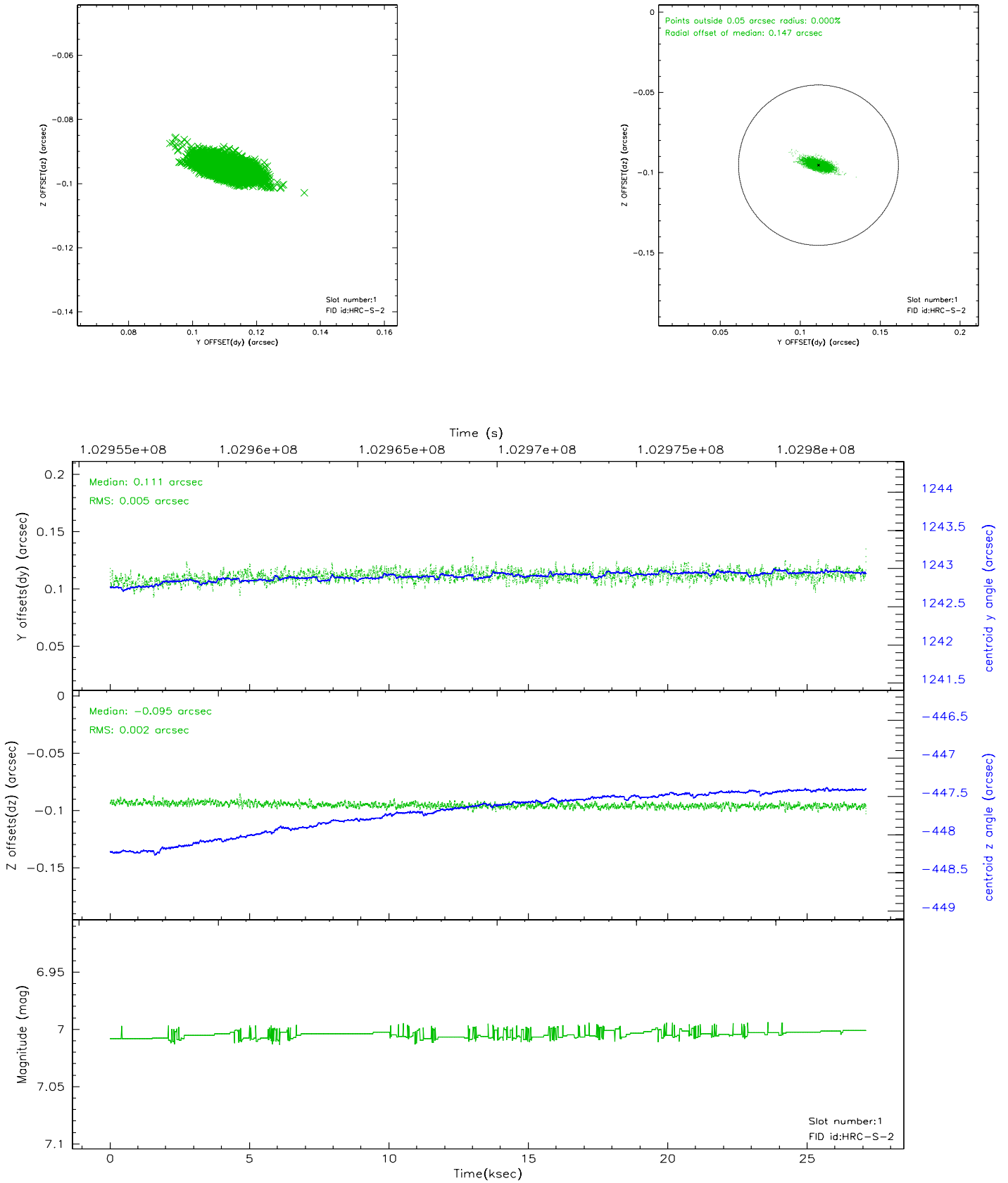


2.5 FID Slots

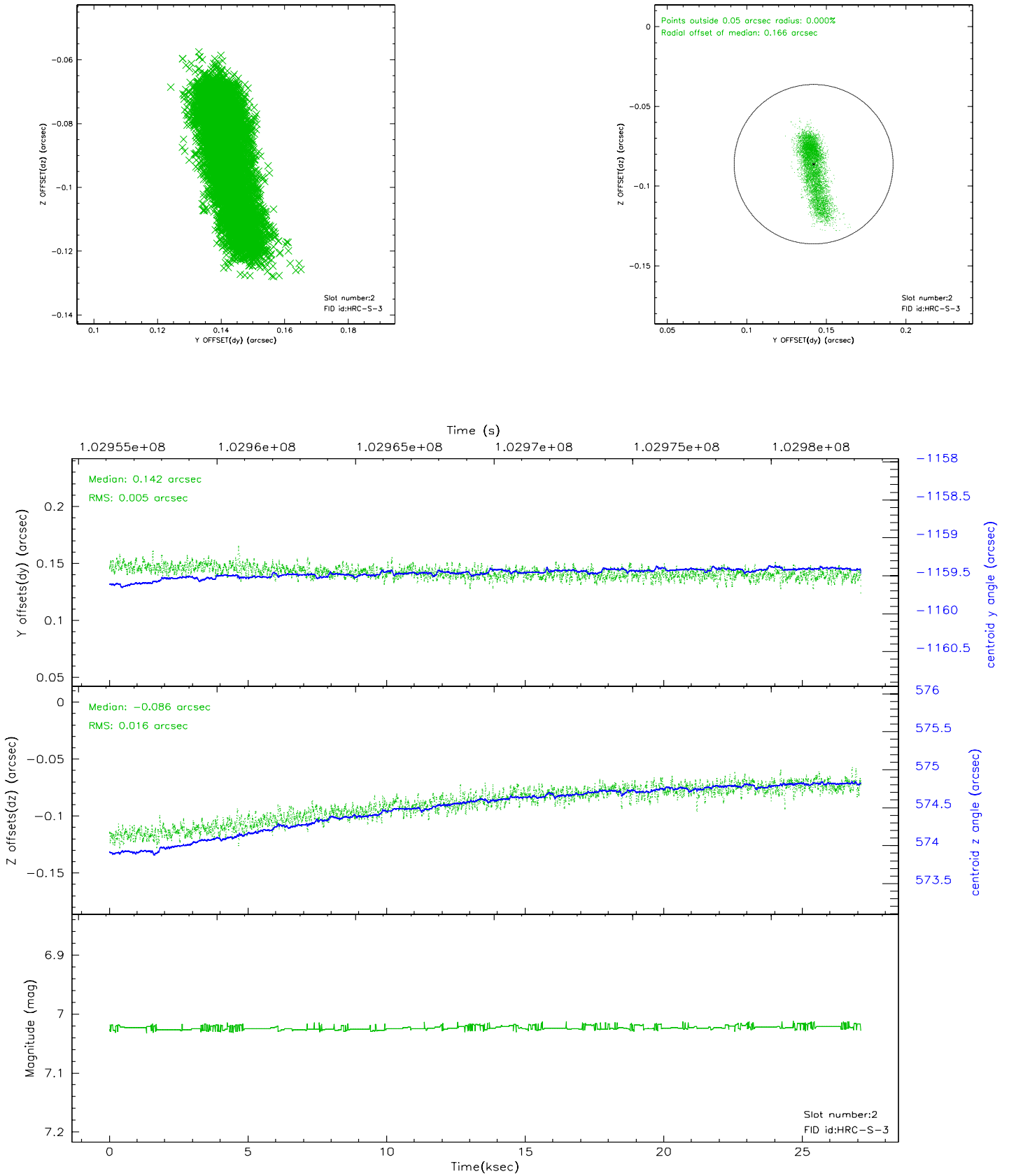
2.5.1 Slot 0



2.5.2 Slot 1

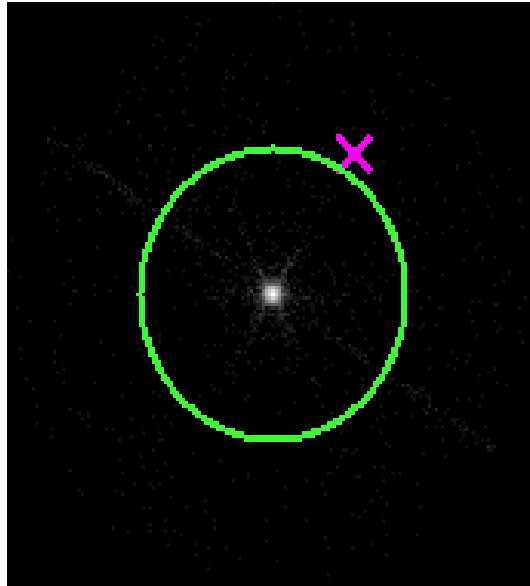


2.5.3 Slot 2



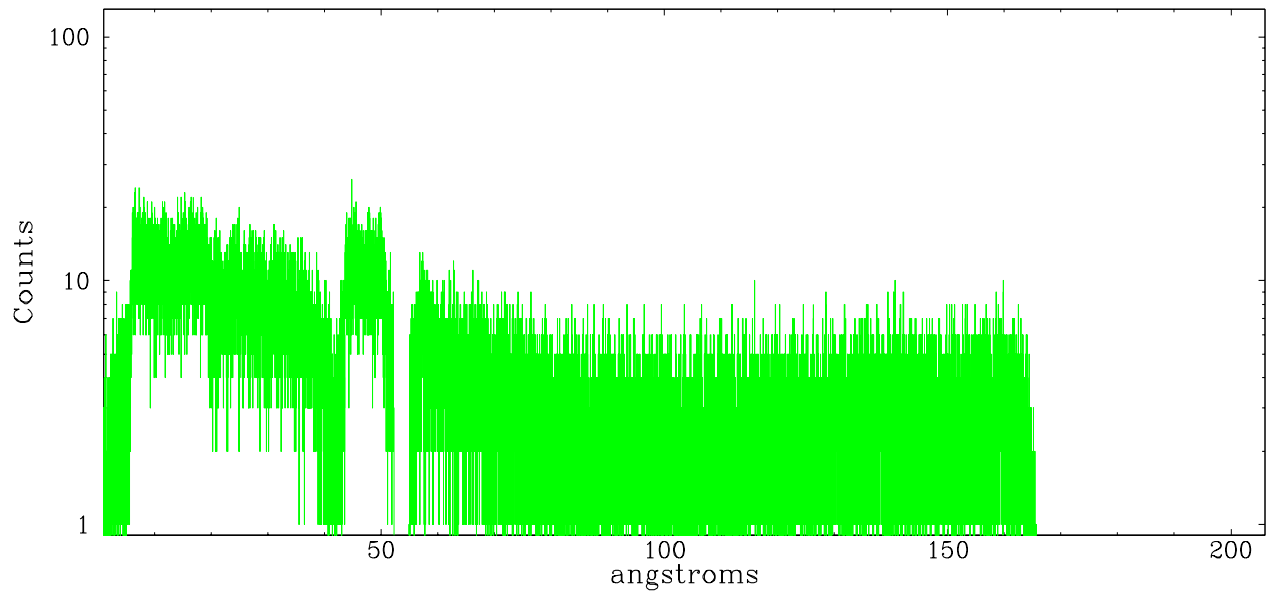
3 Gratings

3.1 LETG Arm

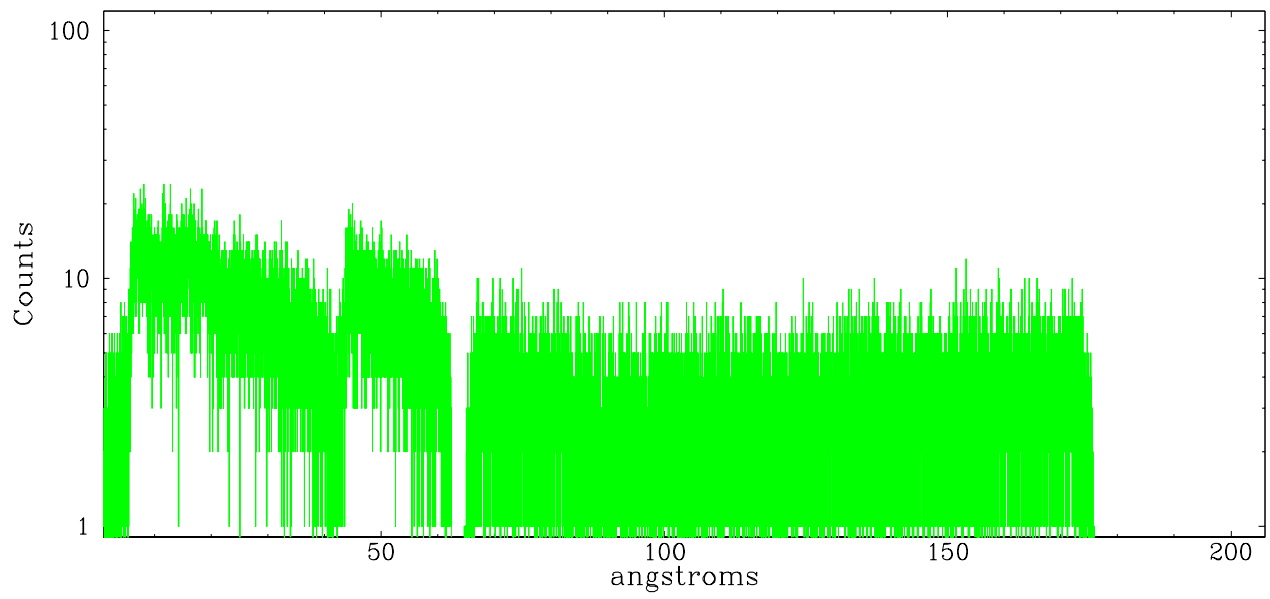


LETG Zero Order

leg order -1



leg order +1



A Summary

A.1 Status

V&V Scientist	Joy Nichols
V&V Date (YYYY-MM-DD)	2006.11.30
V&V Edition	1
V&V Disposition and Status	OK
V&V Charge Time	26.822

A.2 Comments

There are several periods of high count rate, presumably due to a high radiation environment during this observation.