

V&V Reference Report

L2 ASCDS Version : 8.4.4

Observation 9872 - L2 Version 2
Chandra X-Ray Center

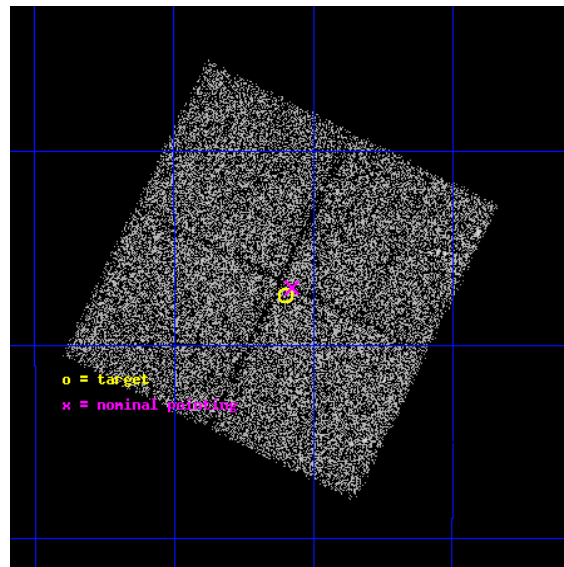
L2 Processing Date : May 16 2012

Contents

1	Front	2
2	OBI	3
2.1	OBI	3
2.1.1	Images	3
2.1.2	Bias	3
2.1.3	Parameters	4
2.1.4	Events	4
2.2	Compared Parameters	5
2.3	Aspect	6
2.4	Star Slots	9
2.4.1	Slot 3	9
2.4.2	Slot 4	10
2.4.3	Slot 5	11
2.4.4	Slot 6	12
2.4.5	Slot 7	13
2.5	FID Slots	14
2.5.1	Slot 0	14
2.5.2	Slot 1	15
2.5.3	Slot 2	16
A	Summary	17
A.1	Status	17
A.2	Comments	17

1 Front

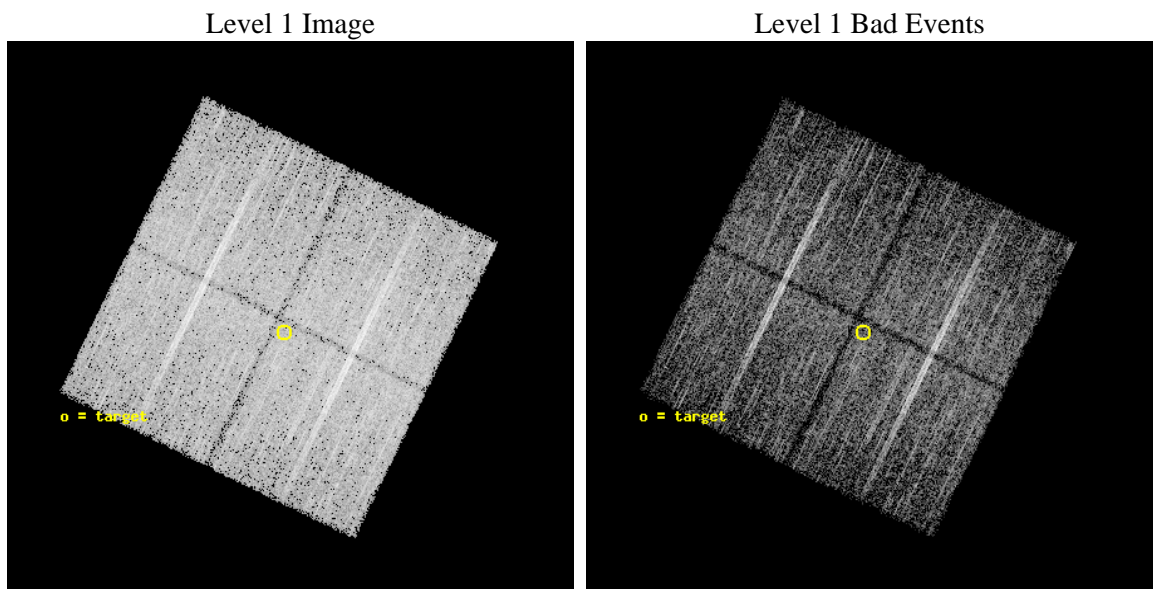
seq_num	200513	Sequence number
obs_id	9872	Observation id
title	Effects of massive star radiation on circumstellar disks evolution in the Eagle Nebula	Proposal title
observer	Dr. Mario Guarcello	Principal investigator
object	NGC 6611	Source name
dtcycle	0	
cycle	P	events from which exps? Prim/Second/Both
ra_targ	274.9	Observer's specified target RA [deg]
dec_targ	-13.79	Observer's specified target Dec [deg]
ra_nom	274.89425924275	Nominal RA [deg]
dec_nom	-13.784146117538	Nominal Dec [deg]
roll_nom	116.20731442799	Nominal Roll [deg]
revision	2	Processing version of data
ontime	9185.3000706434	Sum of GTIs [s]
livetime	9065.2873631009	Livetime [s]
ontime0	9182.1590803862	Sum of GTIs [s]
ontime1	9185.3000706434	Sum of GTIs [s]
ontime2	9185.3000706434	Sum of GTIs [s]
ontime3	9185.3000706434	Sum of GTIs [s]
l2events	40124	Number of level 2 events



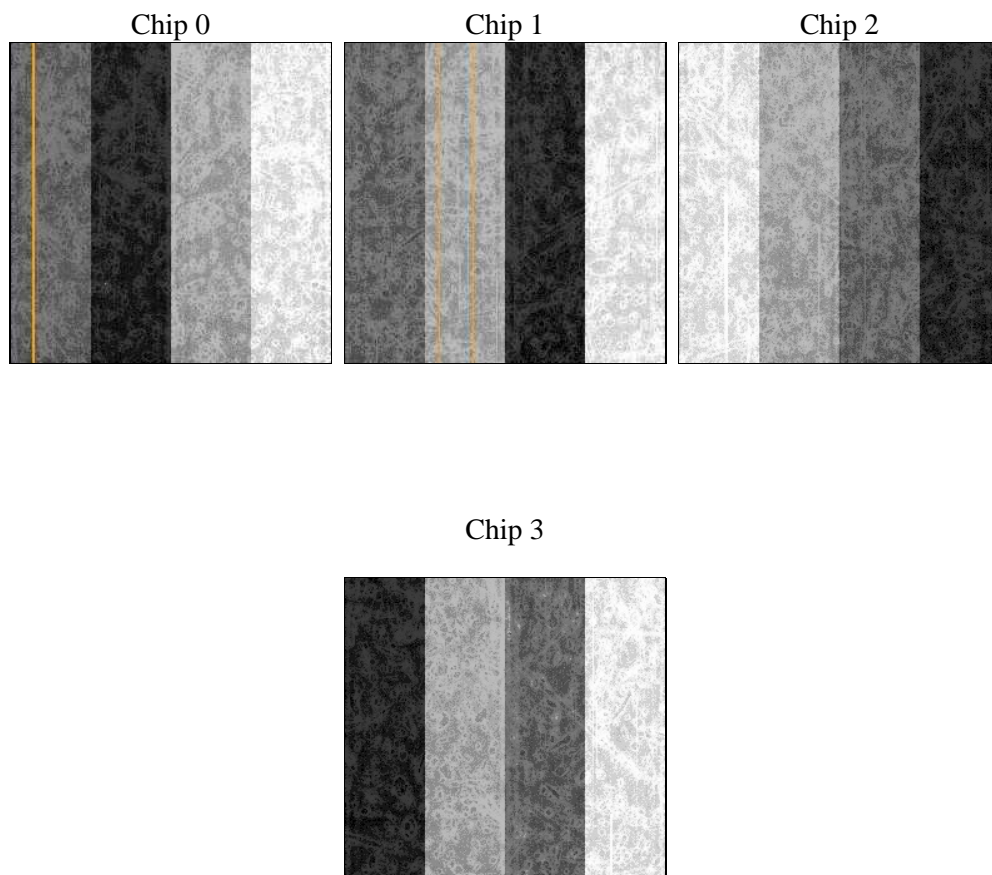
2 OBI

2.1 OBI

2.1.1 Images



2.1.2 Bias



2.1.3 Parameters

obi_num	0	Obi number	sched_exp_time	9000.000000	[s] Scheduled observation exposure time
ascdsver	8.4.4	Processing system revision	ontime	9185.3000706434	Sum of GTIs [s]
caldsver	4.4.9	 	ontime0	9182.1590803862	Sum of GTIs [s]
date	2012-05-16T04:23:10	Date and time of file creation	ontime1	9185.3000706434	Sum of GTIs [s]
revision	2	Processing version of data	ontime2	9185.3000706434	Sum of GTIs [s]
			ontime3	9185.3000706434	Sum of GTIs [s]
			l1events	341088	Number of level 1 events

2.1.4 Events

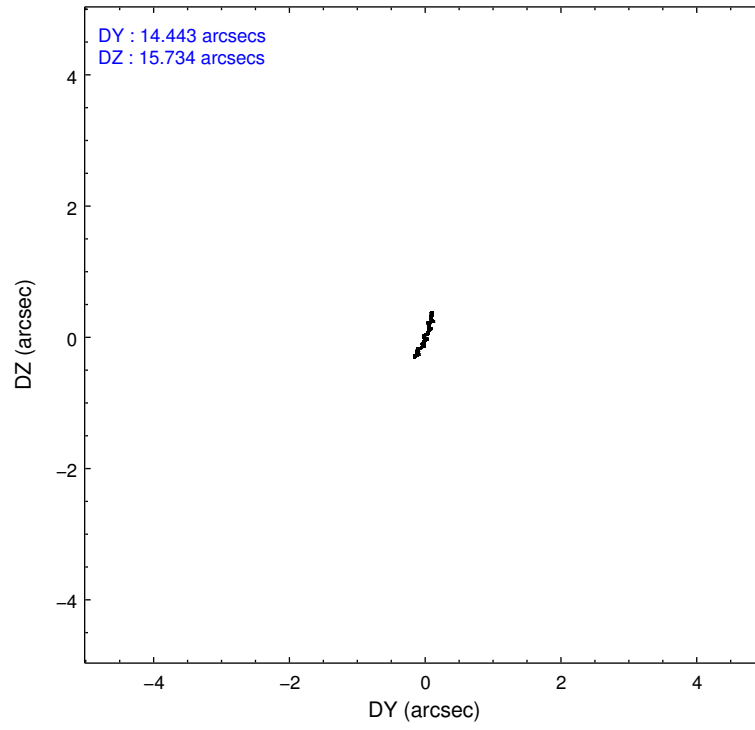
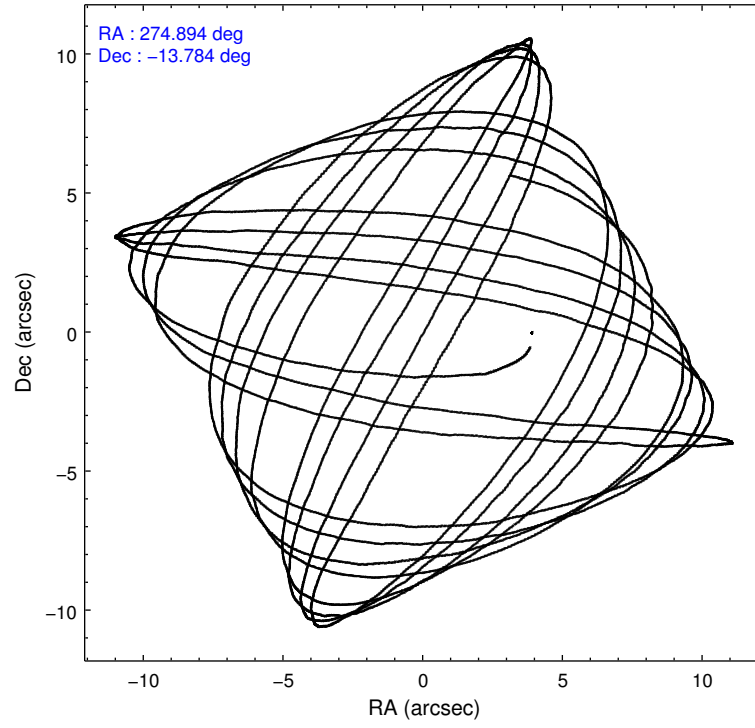
	ccd 0	ccd 1	ccd 2	ccd 3
level 1 events	81329	83315	89276	87168
rejected events	70009	71446	77446	75631
rejected %	86%	85%	86%	86%

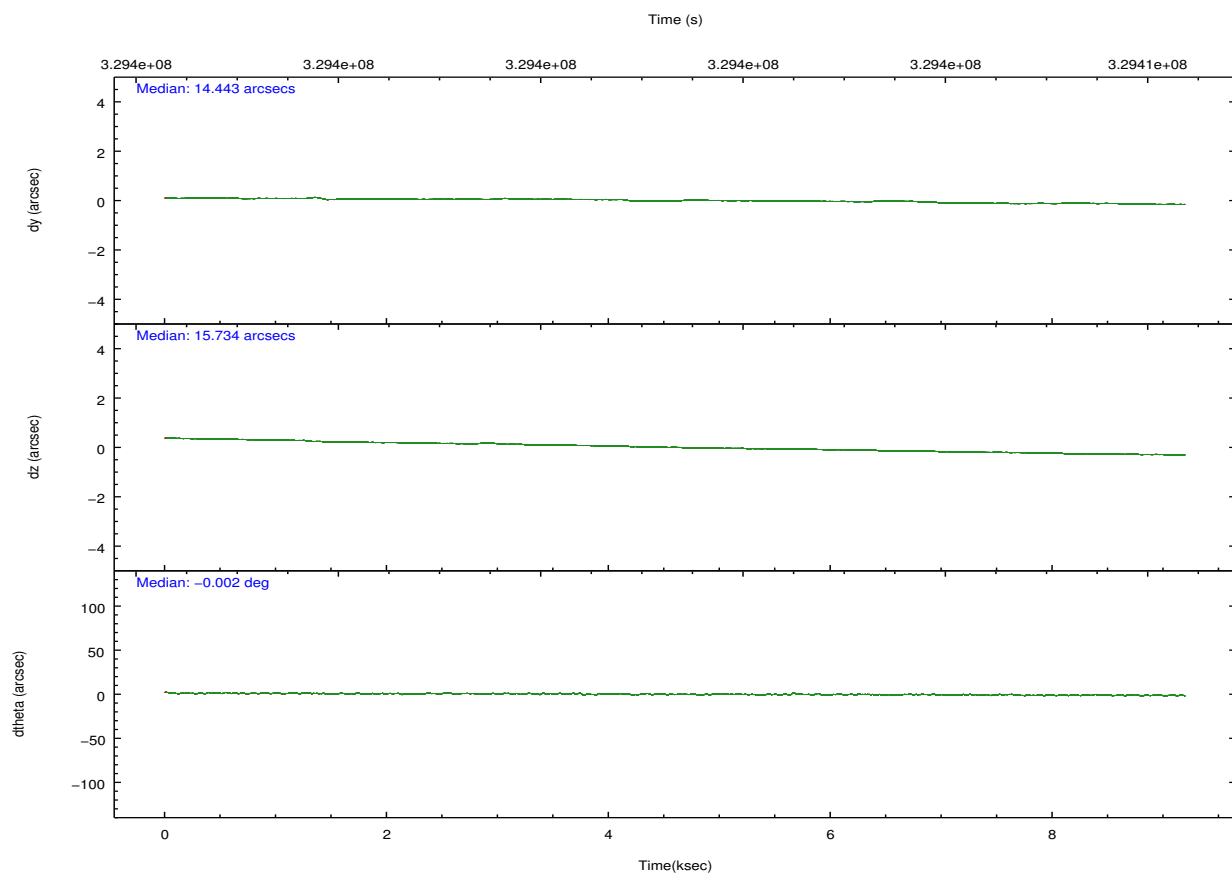
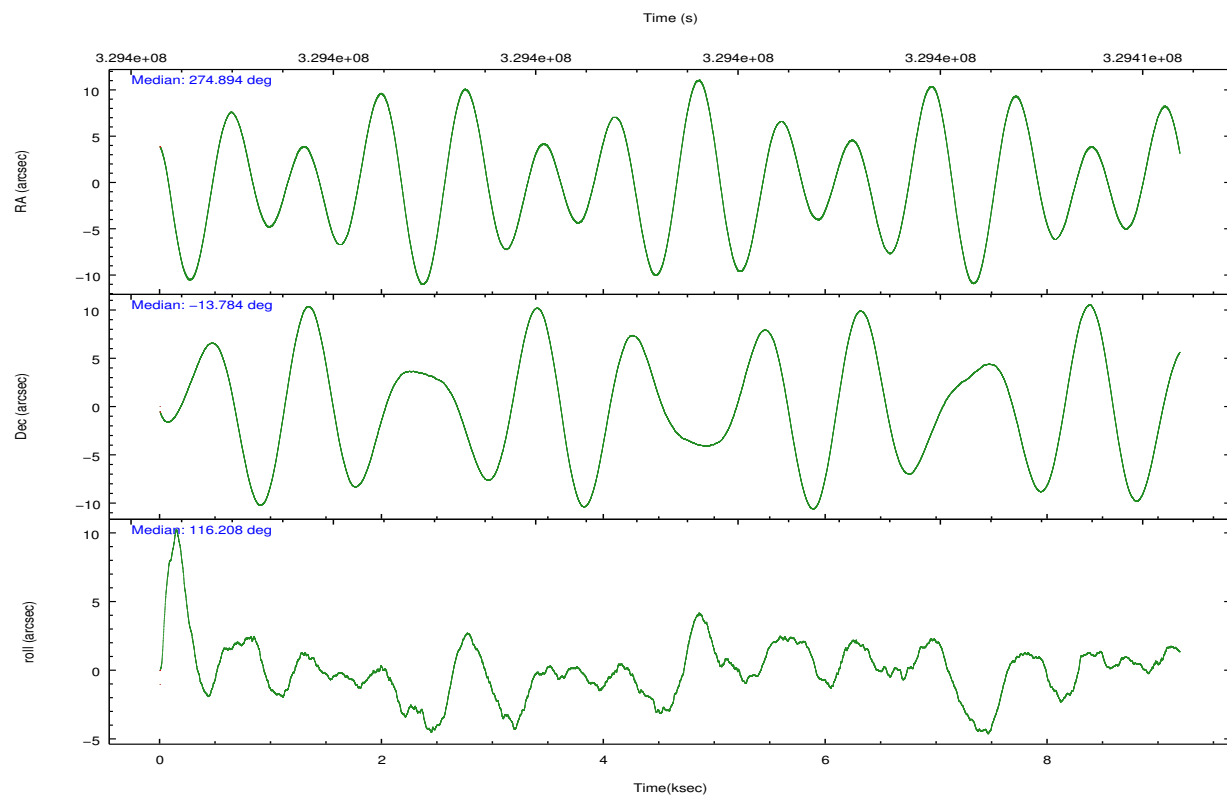
	ccd 0	ccd 1	ccd 2	ccd 3
grade 0 events	5017	4548	5665	5390
	6%	5%	6%	6%
grade 1 events	45	65	65	62
	0%	0%	0%	0%
grade 2 events	2436	2759	2389	2225
	2%	3%	2%	2%
grade 3 events	1039	1201	1000	1032
	1%	1%	1%	1%
grade 4 events	1005	1067	1037	1014
	1%	1%	1%	1%
grade 5 events	3679	3938	3561	4009
	4%	4%	3%	4%
grade 6 events	1859	2332	1784	1913
	2%	2%	1%	2%
grade 7 events	66249	67405	73775	71523
	81%	80%	82%	82%

2.2 Compared Parameters

Parameter	Planned	Actual	Parameter	Planned	Actual
Instrument	ACIS	ACIS	Obspar format version number	7	7
Detector	ACIS-0123	ACIS-0123	Obspar file type	PREDICTED	ACTUAL
Grating	NONE	NONE	Obspar update status	NONE	UPDATED
Data mode	FAINT	FAINT	Number of optional ACIS chips dropped	0	0
Observation mode	POINTING	POINTING	On-chip summing requested	N	N
[deg] Pointing RA	274.917866	274.8942592427476	Subarray requested	NONE	NONE
[deg] Pointing Dec	-13.799342	-13.7841461175376	Alternating exposures requested	N	N
[deg] Pointing Roll	116.004263	116.207314427989	[s] Primary exposure time	0.000000	3.1
[mm] SIM focus pos	-0.782348	-0.7809083437167272			
[mm] SIM defocus	0	0.001439871863259334			
[mm] SIM translation stage pos	-233.592463	-233.5874344608287			
[mm] SIM translation stage offset	0	-0.005018542100998502			
[s] Observation start time (MET)	329396933.184000	329395987.28957			
Observation start date	2008-06-09T11:07:48	2008-06-09T10:53:07			
[s] Observation end time (MET)	329405933.184000	329406696.49009			
Observation end date	2008-06-09T13:37:48	2008-06-09T13:51:36			
Read mode	TIMED	TIMED			

2.3 Aspect



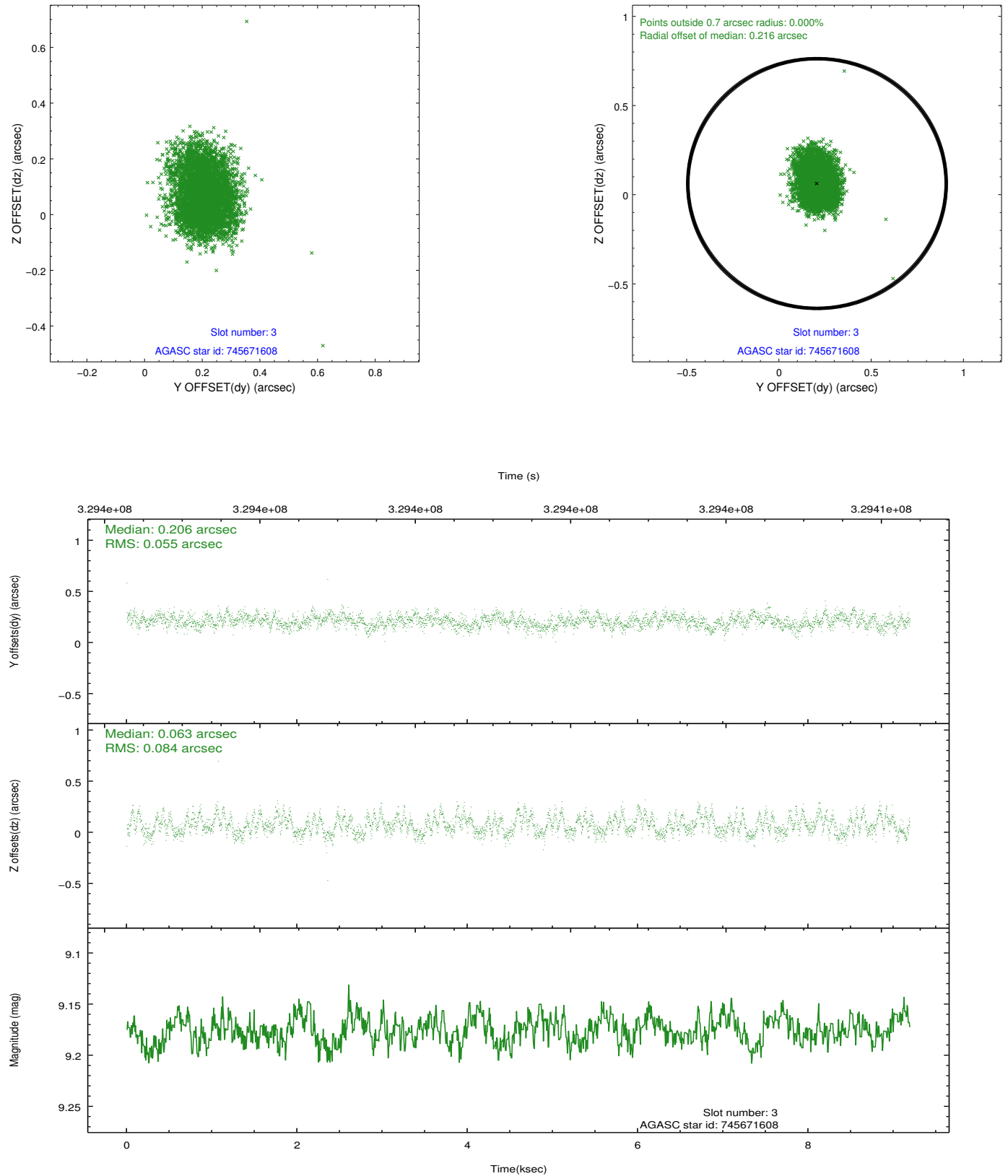


Slot Statistics

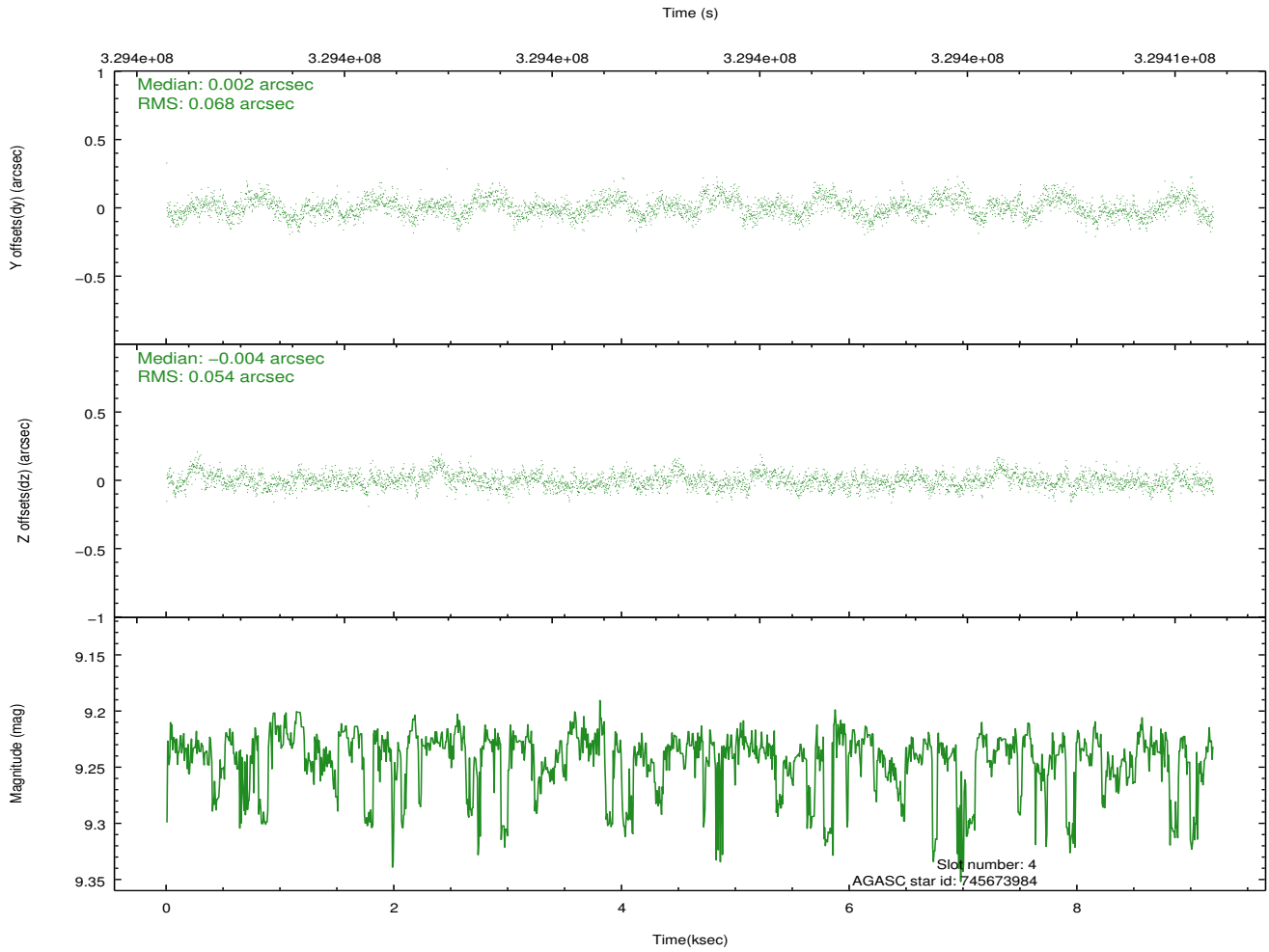
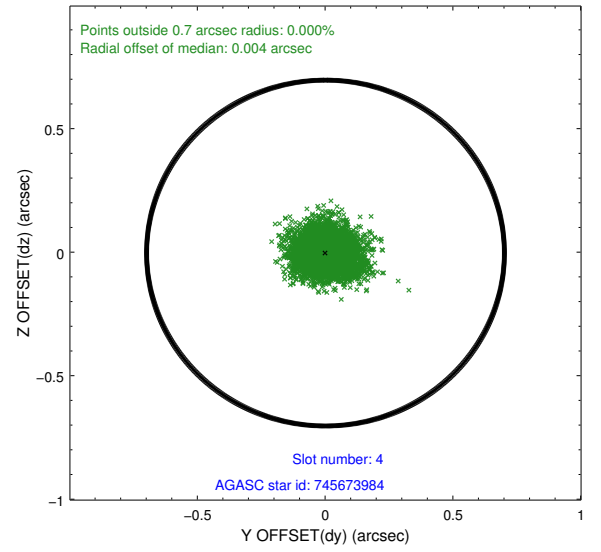
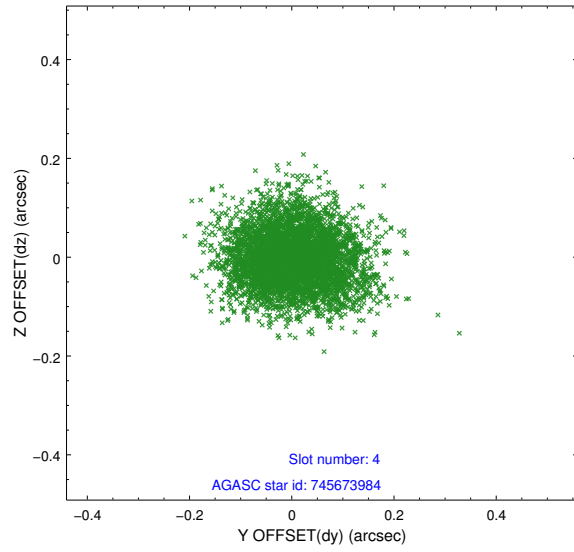
slot	status	id	mag	n_pts	med_dy	med_dz	dr1	dr2	ra	dec	mean_y	mean_z
0	FID	ACIS-I-1	7.01	2243	0.034	-0.011	0.011	0.019	0.000000	0.000000	925.06	-839.38
1	FID	ACIS-I-5	7.00	2243	-0.210	0.038	0.008	0.013	0.000000	0.000000	-1822.95	1057.88
2	FID	ACIS-I-6	7.01	2243	0.085	0.043	0.008	0.014	0.000000	0.000000	390.03	1703.04
3	GUIDE	745671608	9.18	4482	0.206	0.063	0.105	0.171	275.327786	-13.786724	-588.26	-1307.28
4	GUIDE	745673984	9.24	4453	0.002	-0.004	0.092	0.151	274.591997	-13.386956	1834.02	375.00
5	GUIDE	745674432	7.14	4484	-0.200	-0.119	0.060	0.094	274.729377	-13.541343	1124.17	185.90
6	GUIDE	745675656	7.95	4485	-0.093	-0.092	0.059	0.093	274.656383	-13.977352	-175.55	1102.26
7	GUIDE	745676512	8.97	4484	0.084	0.145	0.070	0.117	275.415079	-14.258251	-2246.85	-833.58

2.4 Star Slots

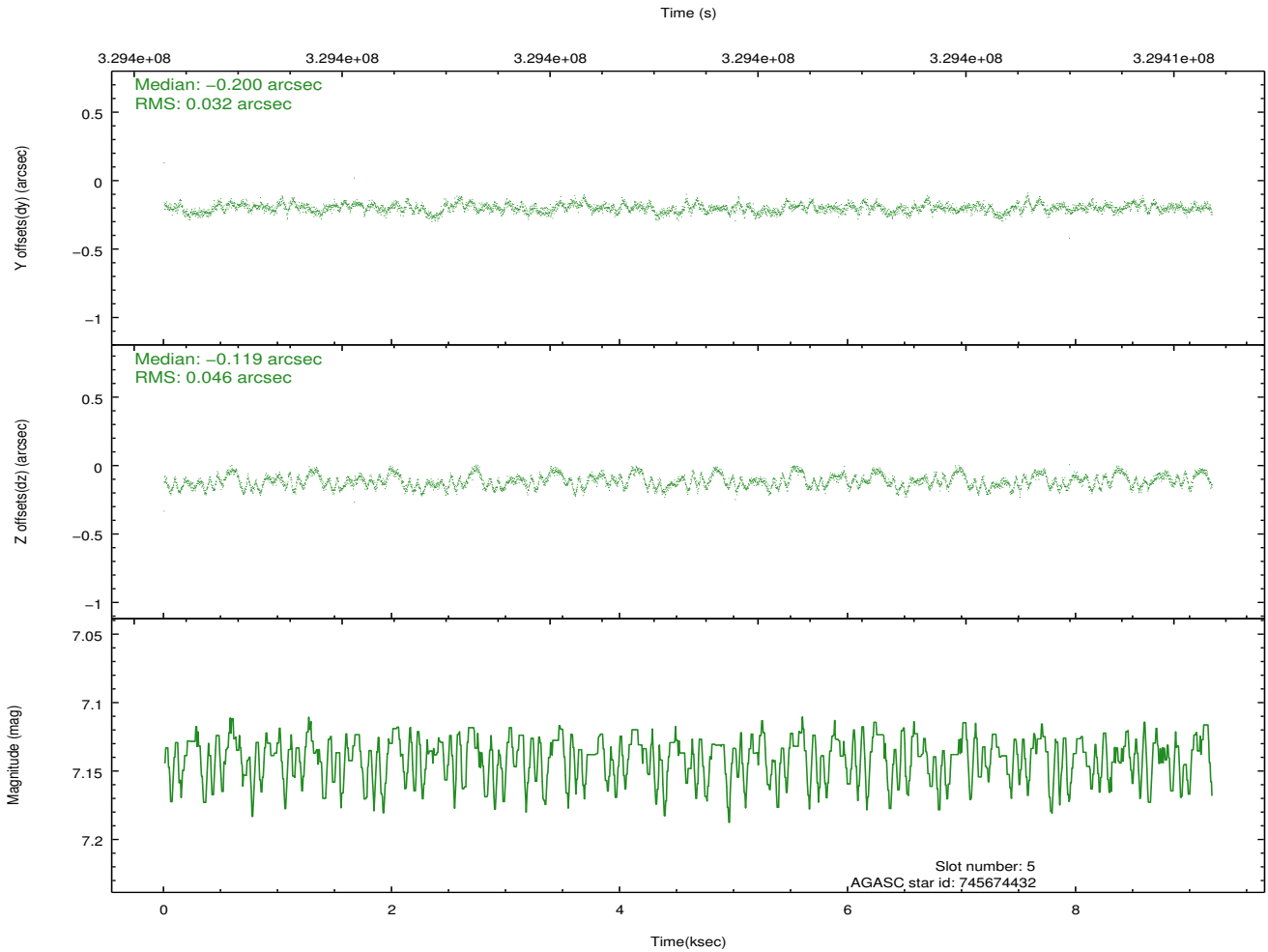
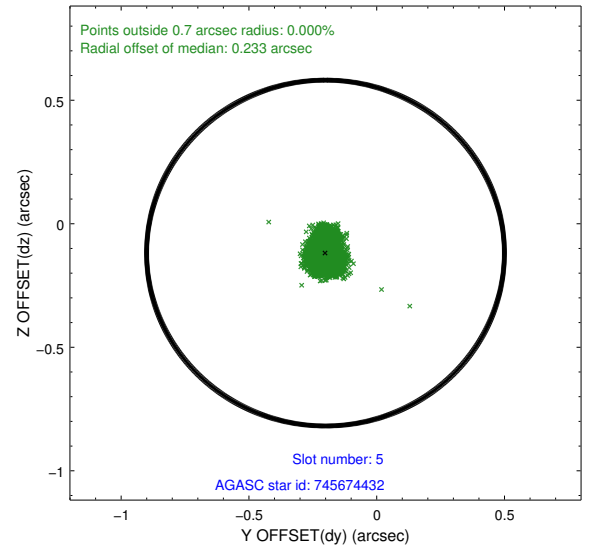
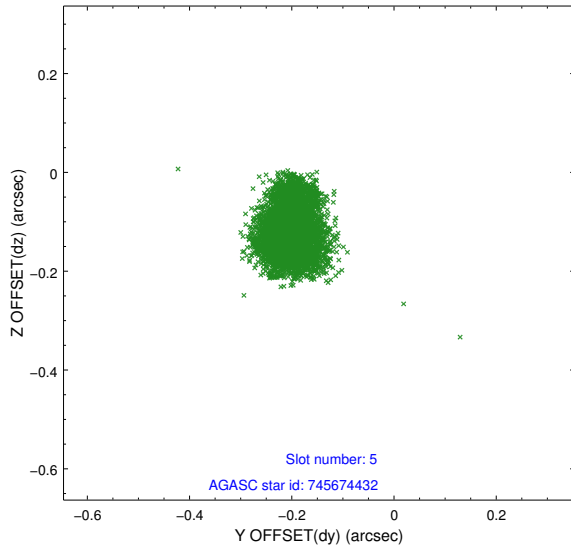
2.4.1 Slot 3



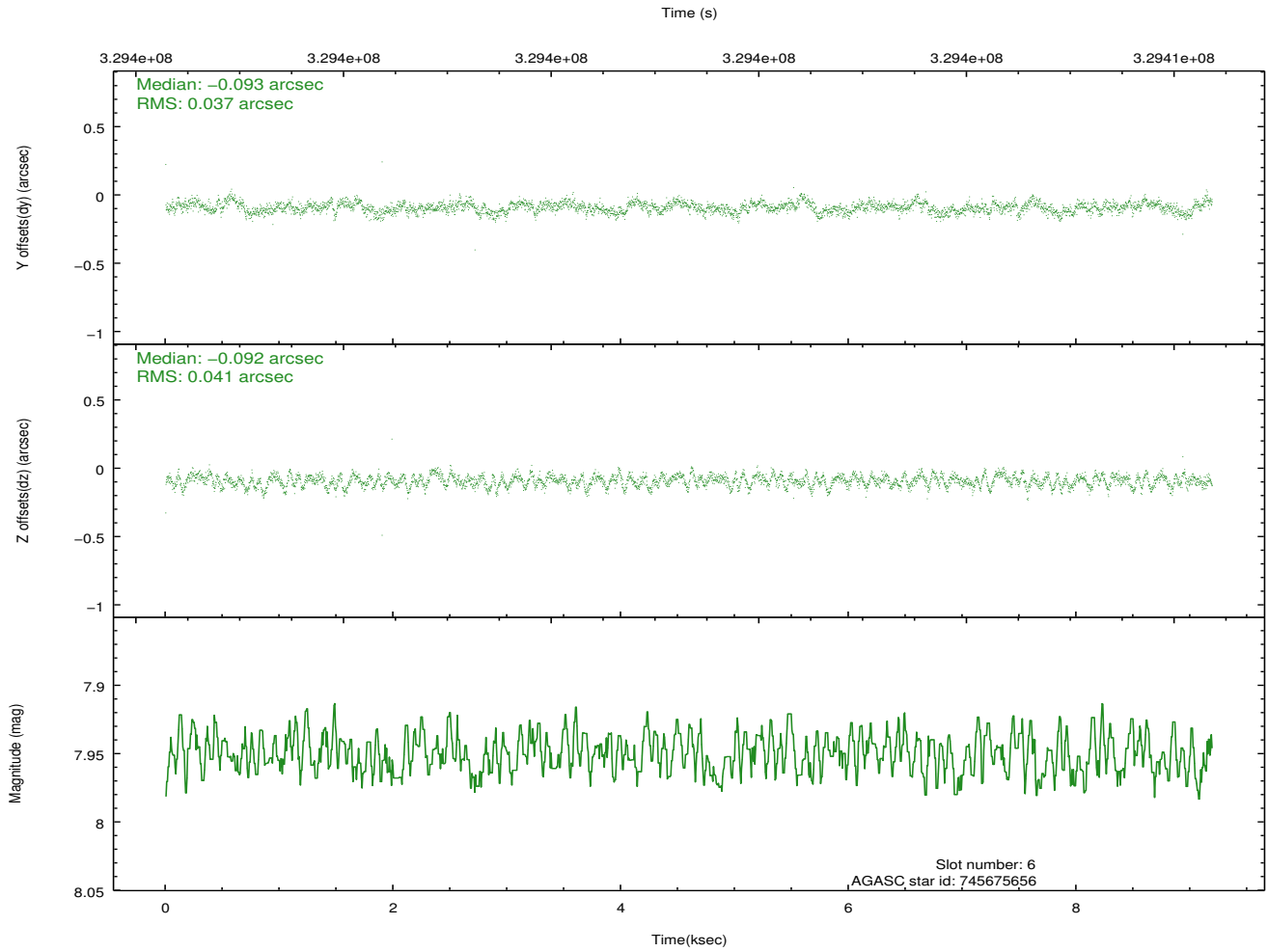
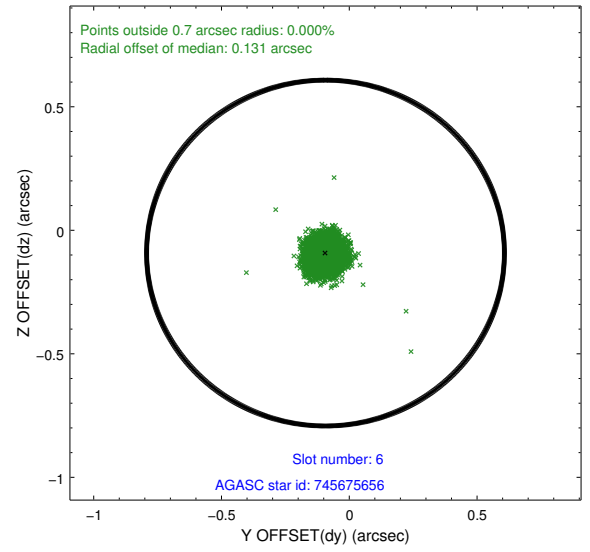
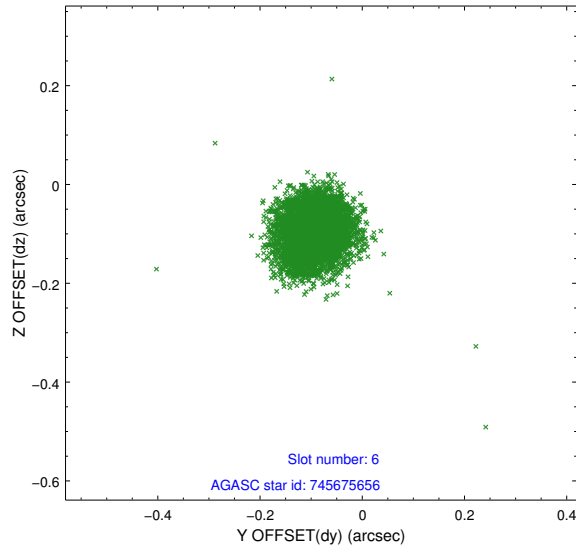
2.4.2 Slot 4



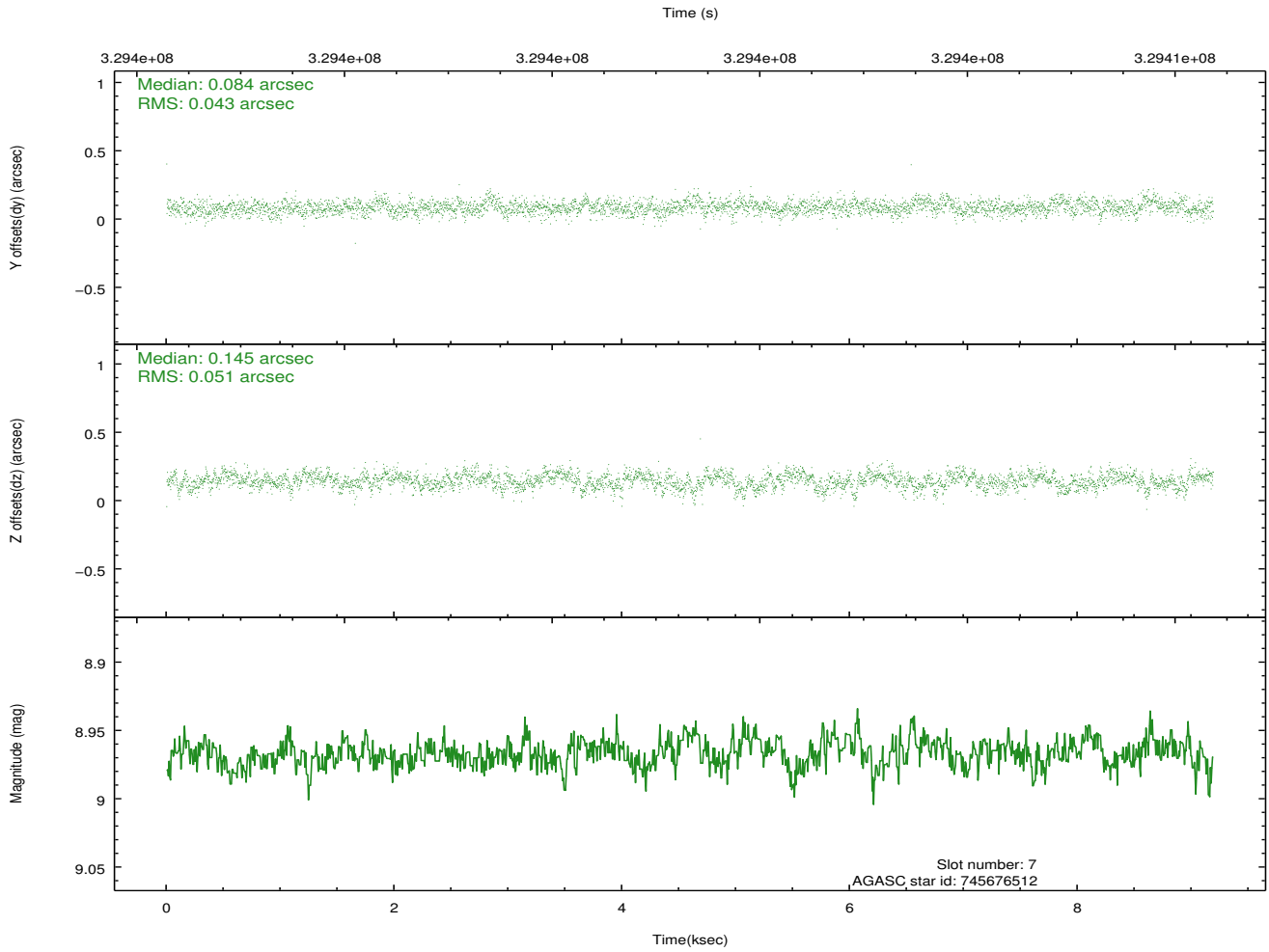
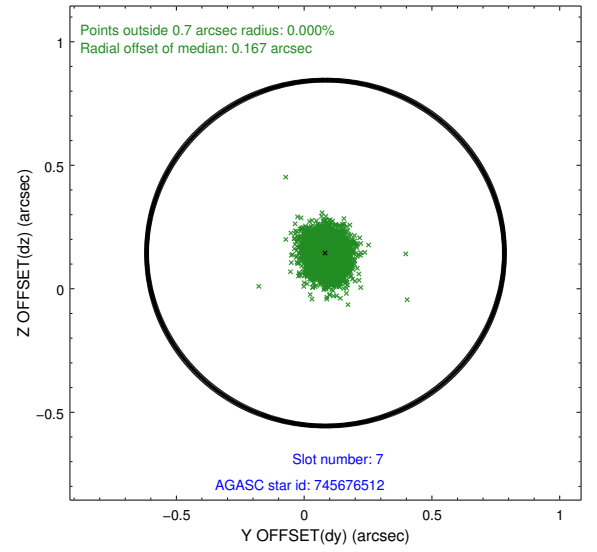
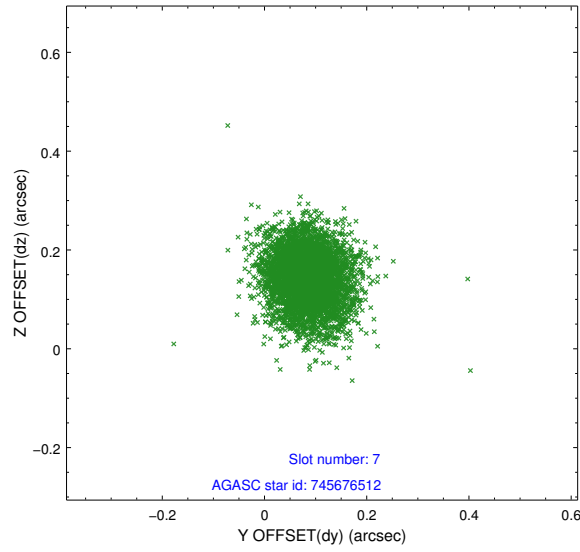
2.4.3 Slot 5



2.4.4 Slot 6

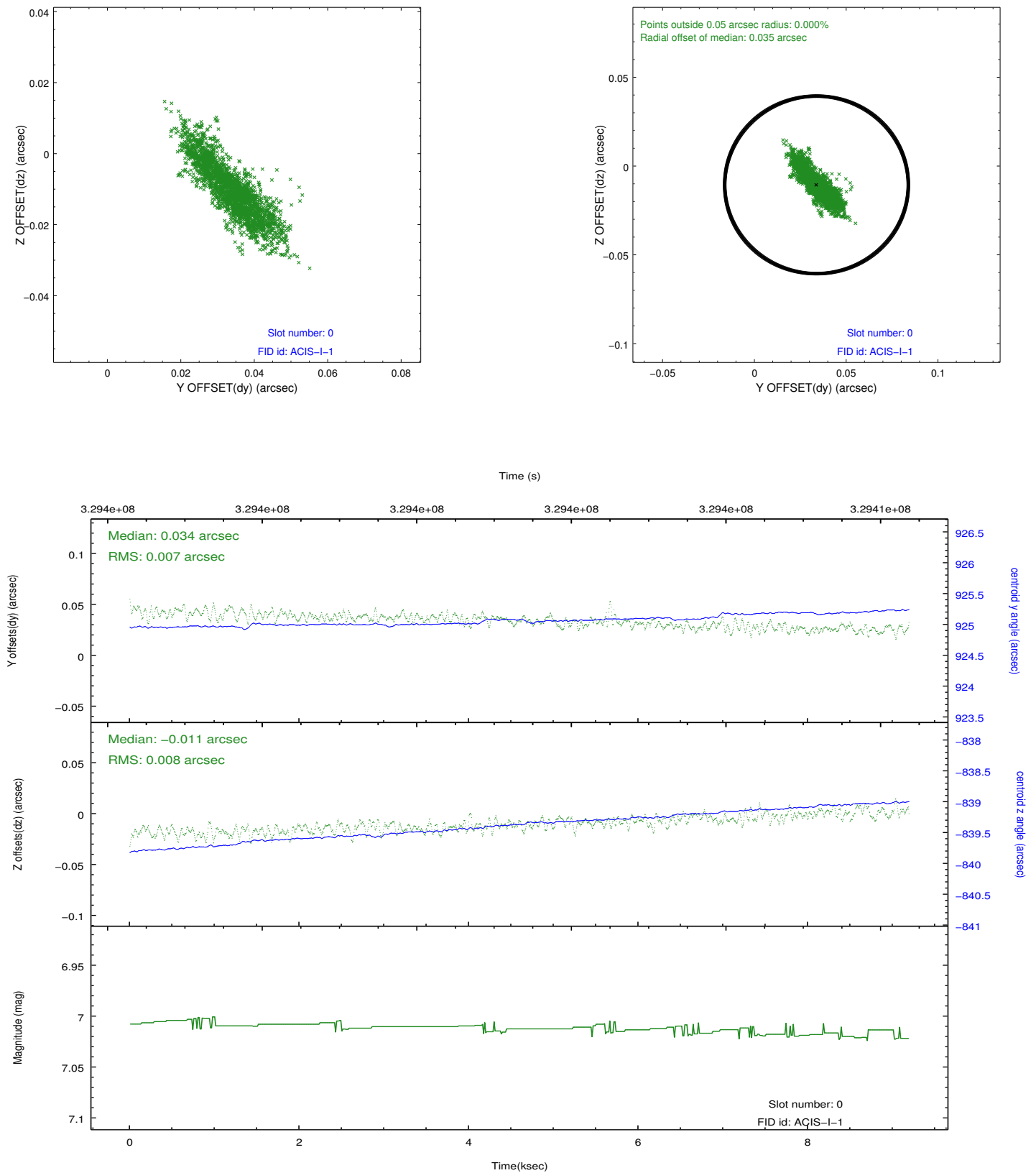


2.4.5 Slot 7

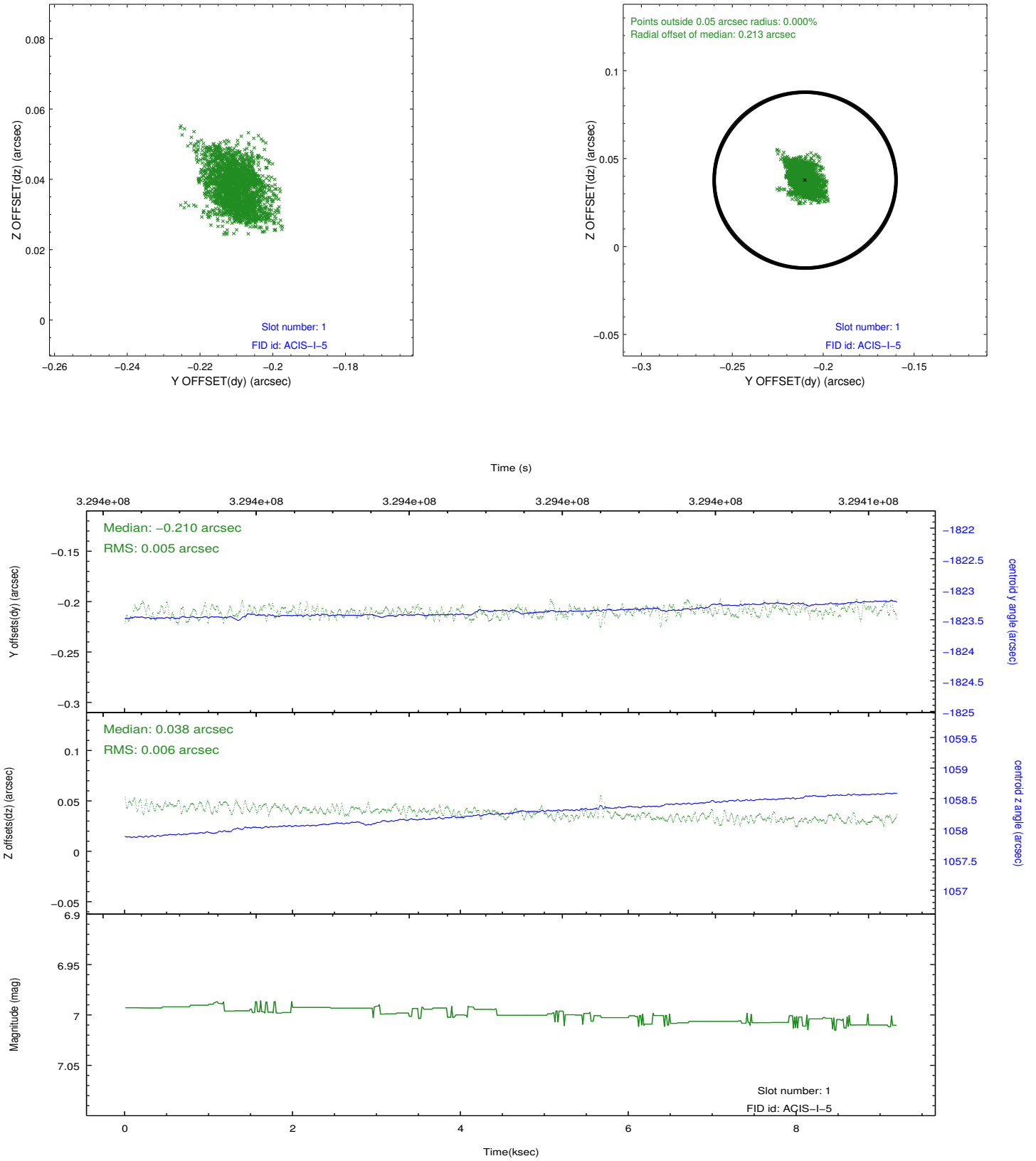


2.5 FID Slots

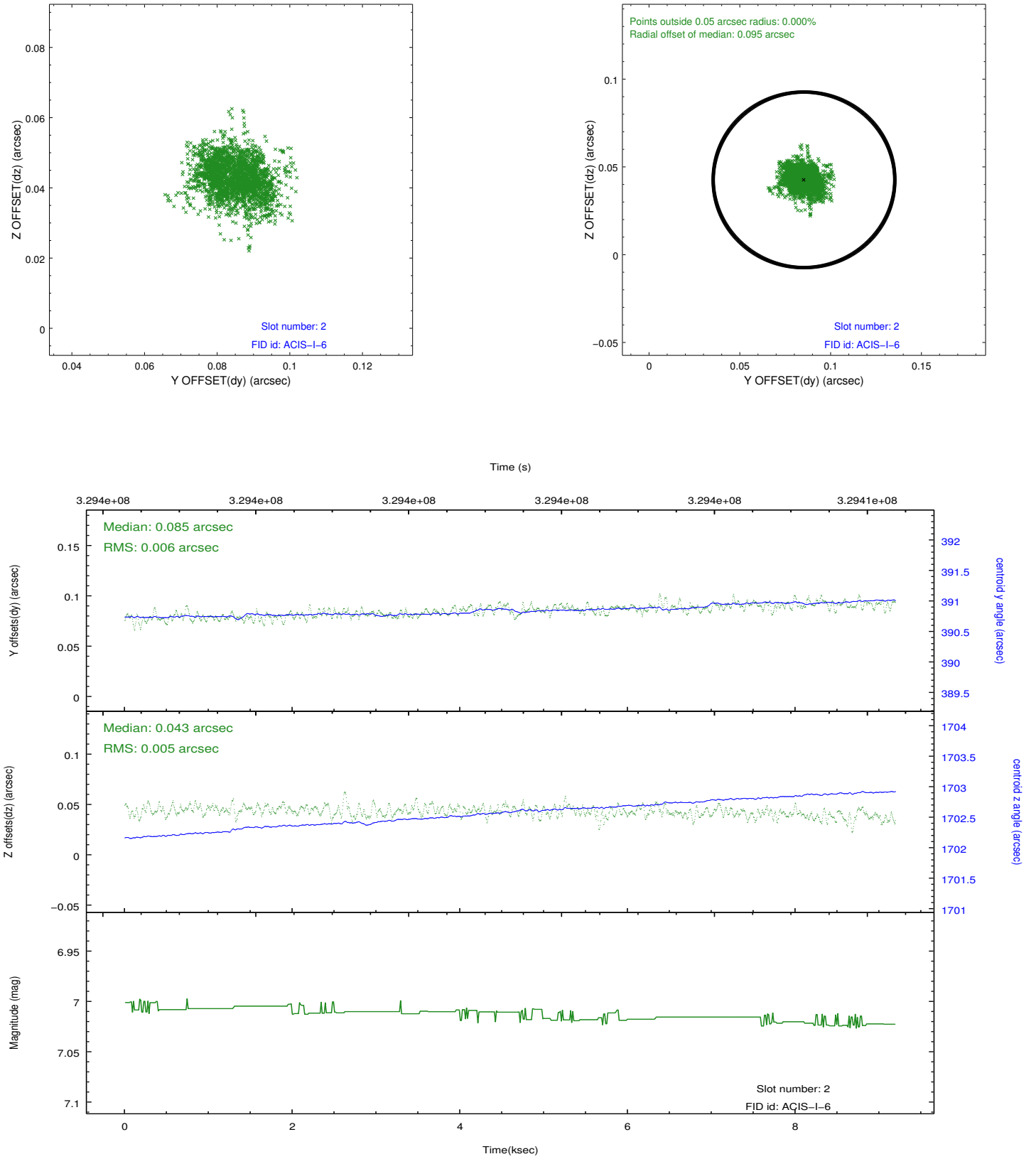
2.5.1 Slot 0



2.5.2 Slot 1



2.5.3 Slot 2



A Summary

A.1 Status

V&V Scientist	Jen Lauer
V&V Date (YYYY-MM-DD)	2012.05.22
V&V Edition	1
V&V Disposition and Status	OK
V&V Charge Time	9.18530007

A.2 Comments