

V&V Reference Report

L2 ASCDS Version : 8.4.4

Observation 9802 - L2 Version 2
Chandra X-Ray Center

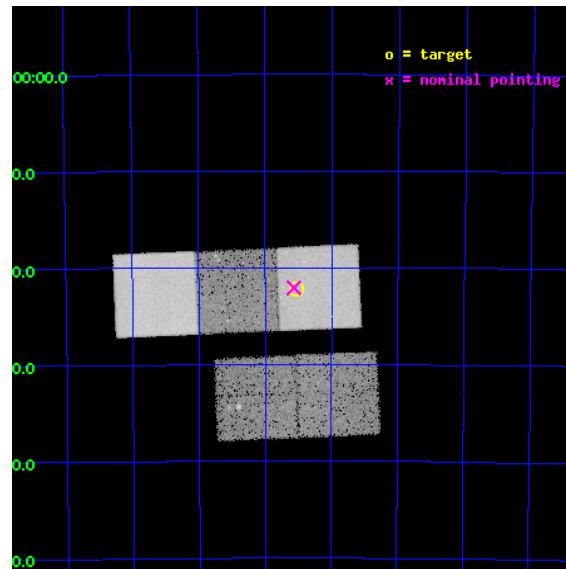
L2 Processing Date : May 6 2012

Contents

1	Front	2
2	OBI	3
2.1	OBI	3
2.1.1	Images	3
2.1.2	Bias	3
2.1.3	Parameters	4
2.1.4	Events	4
2.2	Compared Parameters	5
2.3	Aspect	6
2.4	Star Slots	9
2.4.1	Slot 3	9
2.4.2	Slot 4	10
2.4.3	Slot 5	11
2.4.4	Slot 6	12
2.4.5	Slot 7	13
2.5	FID Slots	14
2.5.1	Slot 0	14
2.5.2	Slot 1	15
2.5.3	Slot 2	16
A	Summary	17
A.1	Status	17
A.2	Comments	17

1 Front

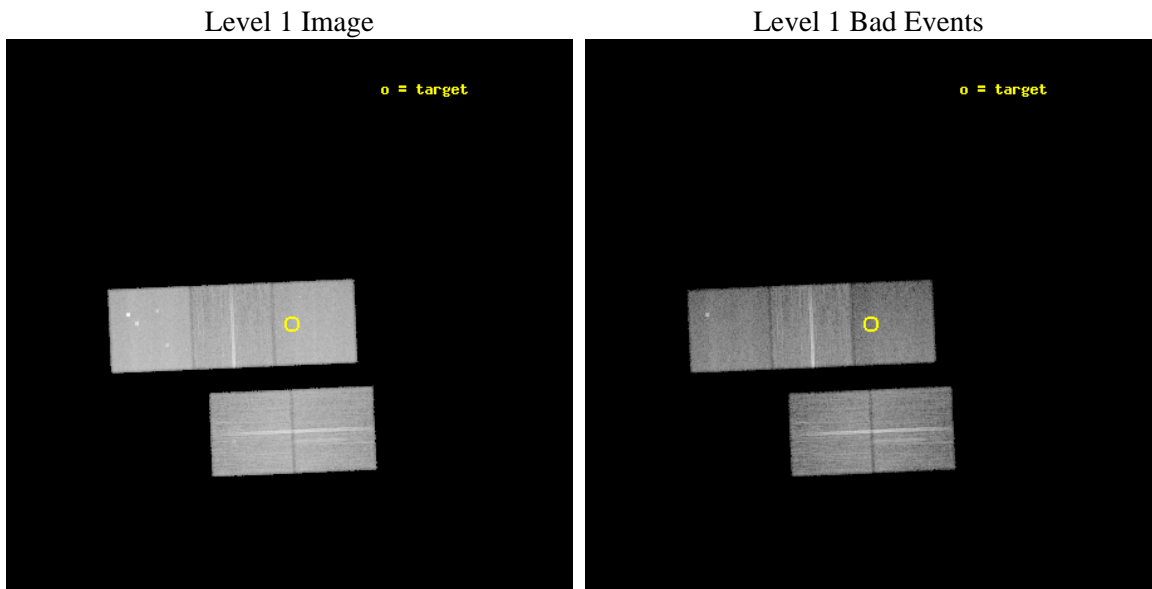
seq_num	500949	Sequence number
obs_id	9802	Observation id
title	The extreme late-time light curve of GRB 060729	Proposal title
observer	Dr. Dirk Grupe	Principal investigator
object	GRB 060729	Source name
dtcycle	0	
cycle	P	events from which exps? Prim/Second/Both
ra_targ	95.382917	Observer's specified target RA [deg]
dec_targ	-62.370139	Observer's specified target Dec [deg]
ra_nom	95.391997689698	Nominal RA [deg]
dec_nom	-62.367767965676	Nominal Dec [deg]
roll_nom	357.53953534545	Nominal Roll [deg]
revision	2	Processing version of data
ontime	20506.500157714	Sum of GTIs [s]
liveltime	20238.567636488	Livetime [s]
ontime2	20506.500157714	Sum of GTIs [s]
ontime3	20503.359187365	Sum of GTIs [s]
ontime5	20506.500157714	Sum of GTIs [s]
ontime6	20503.359167457	Sum of GTIs [s]
ontime7	20506.500157714	Sum of GTIs [s]
l2events	235627	Number of level 2 events



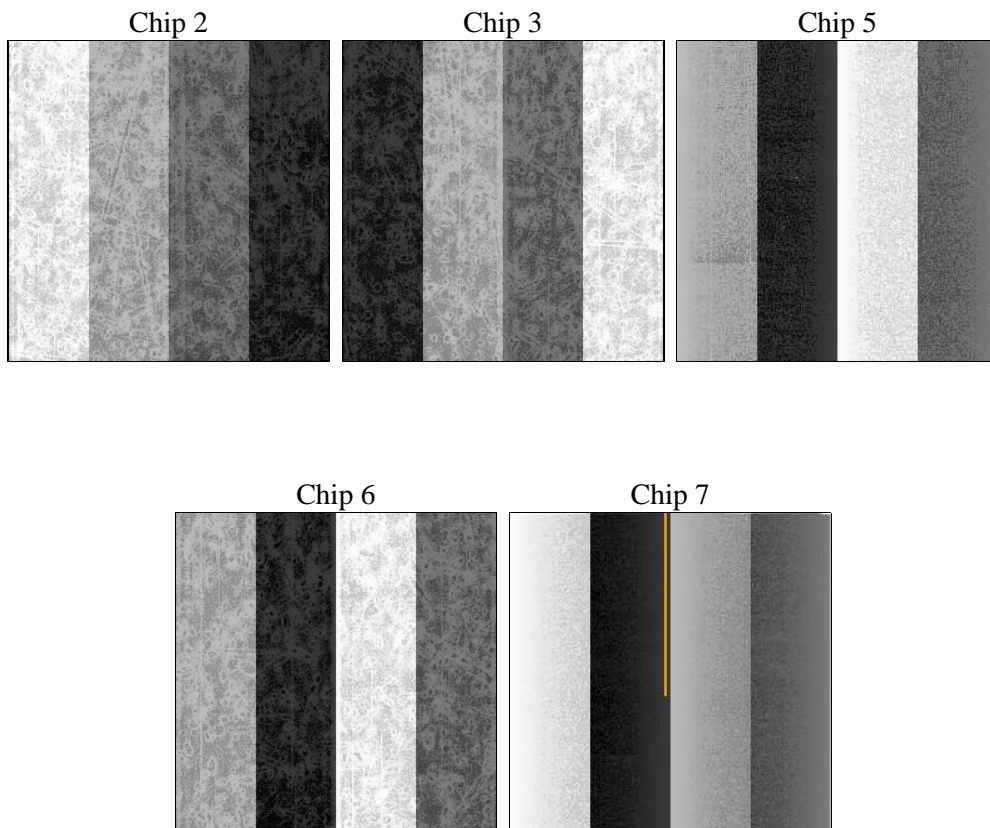
2 OBI

2.1 OBI

2.1.1 Images



2.1.2 Bias



2.1.3 Parameters

obi_num	0	Obi number	sched_exp_time	20380.000000	[s] Scheduled observation exposure time
ascdsver	8.4.4	Processing system revision	ontime	20506.500157714	Sum of GTIs [s]
caldbver	4.4.9	 	ontime2	20506.500157714	Sum of GTIs [s]
date	2012-05-06T16:05:00	Date and time of file creation	ontime3	20503.359187365	Sum of GTIs [s]
revision	2	Processing version of data	ontime5	20506.500157714	Sum of GTIs [s]
			ontime6	20503.359167457	Sum of GTIs [s]
			ontime7	20506.500157714	Sum of GTIs [s]
			l1events	976905	Number of level 1 events

2.1.4 Events

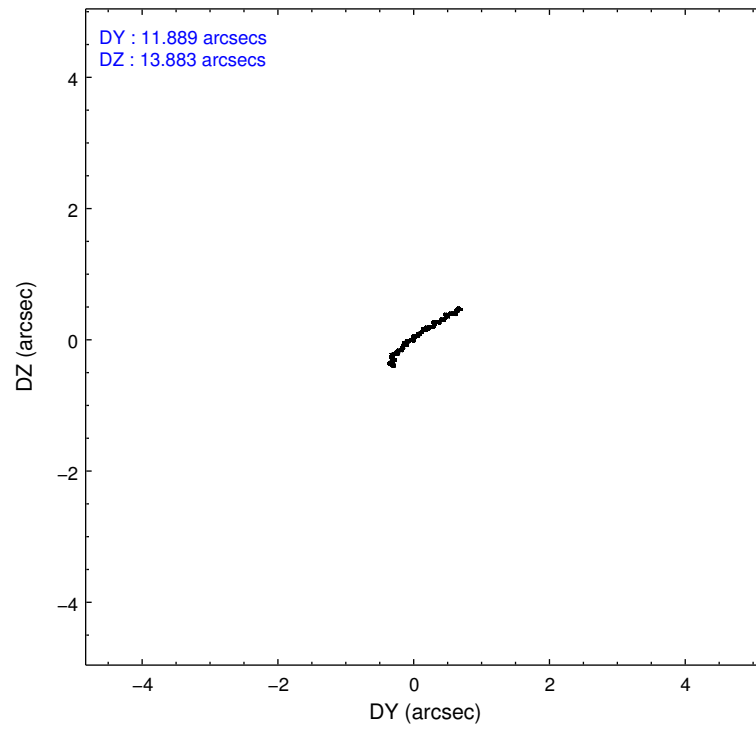
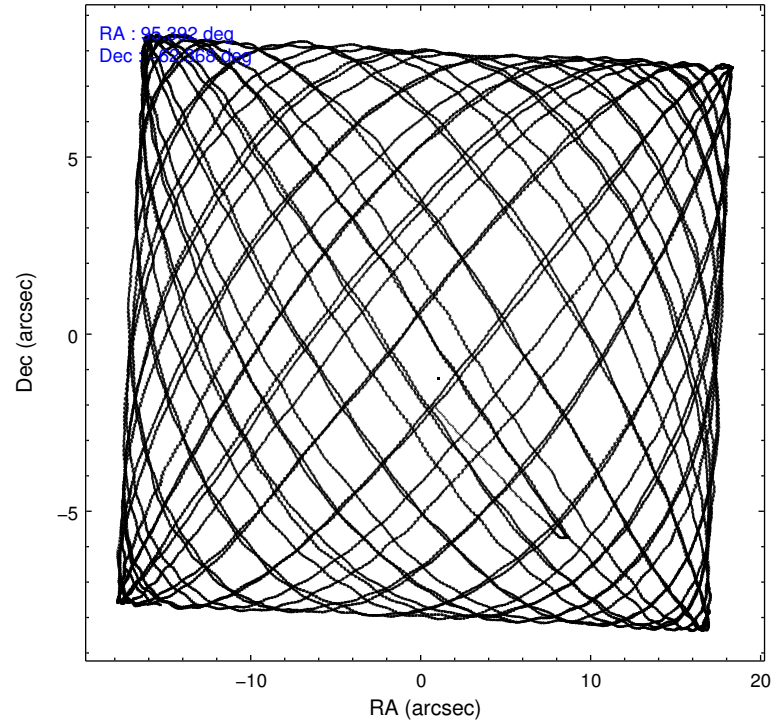
	ccd 2	ccd 3	ccd 5	ccd 6	ccd 7
level 1 events	181672	172458	246837	178357	197581
rejected events	164887	157101	129262	160723	110738
rejected %	90%	91%	52%	90%	56%

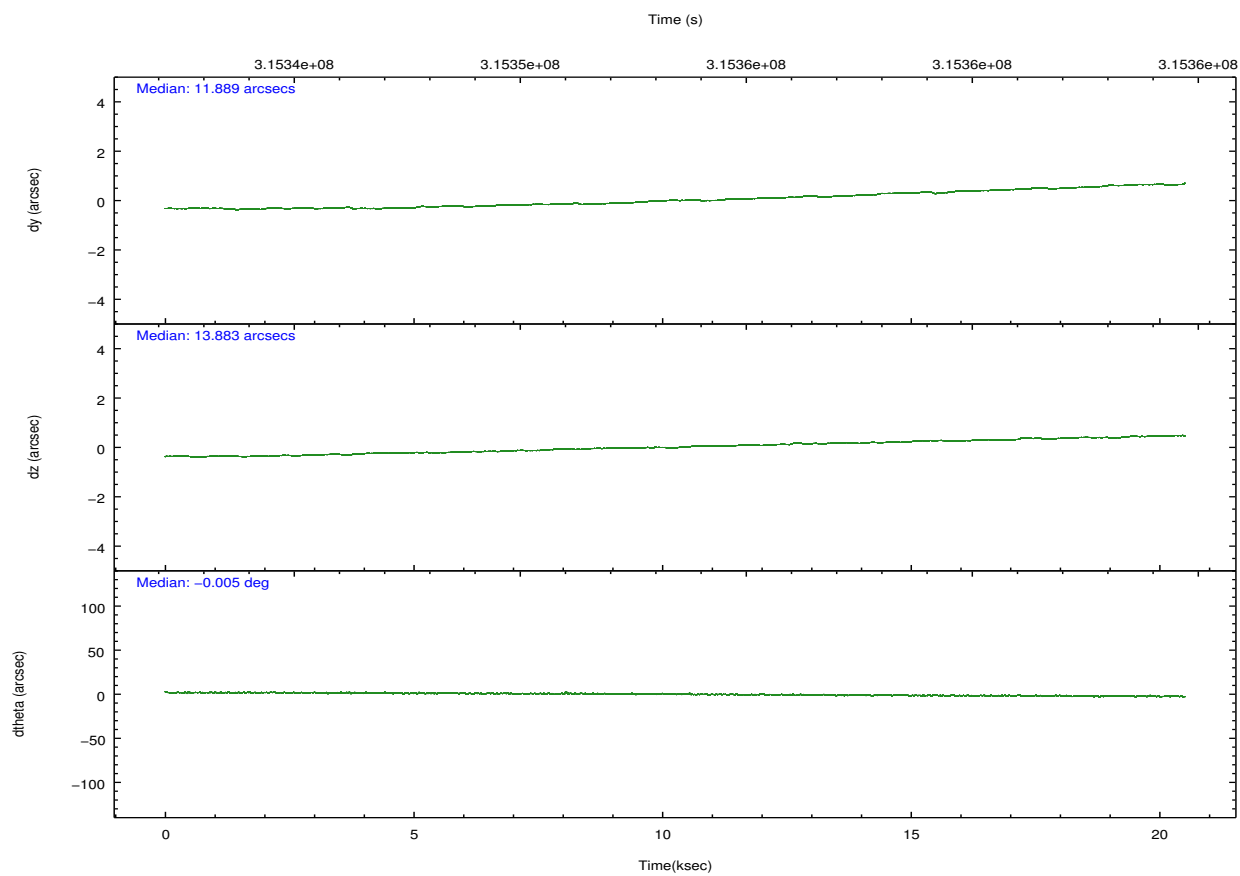
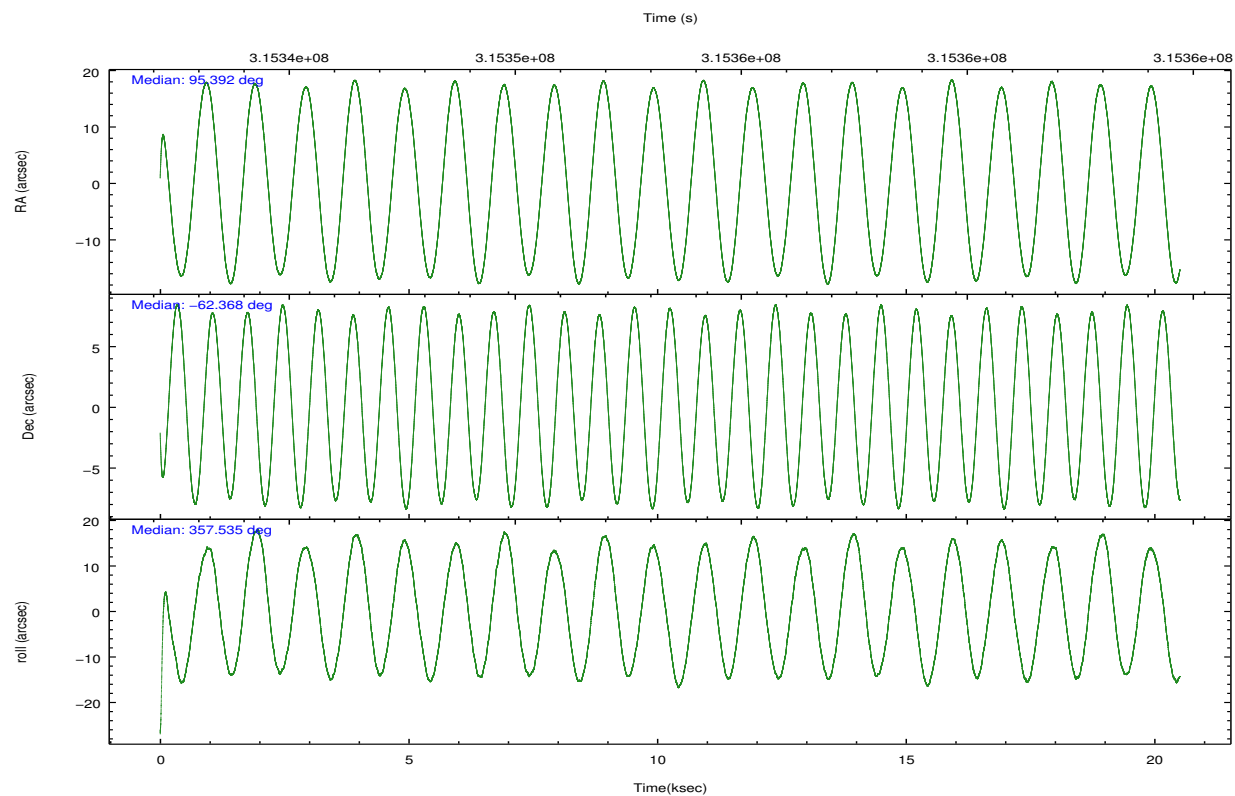
	ccd 2	ccd 3	ccd 5	ccd 6	ccd 7
grade 0 events	6385	5595	13165	6422	8425
	3%	3%	5%	3%	4%
grade 1 events	115	86	1221	101	263
	0%	0%	0%	0%	0%
grade 2 events	4209	3522	36404	4084	18294
	2%	2%	14%	2%	9%
grade 3 events	1808	1892	4899	1951	8402
	0%	1%	1%	1%	4%
grade 4 events	1891	1836	4716	1947	8382
	1%	1%	1%	1%	4%
grade 5 events	5784	7181	18829	7156	20901
	3%	4%	7%	4%	10%
grade 6 events	3227	3252	63749	3988	47194
	1%	1%	25%	2%	23%
grade 7 events	158253	149094	103854	152708	85720
	87%	86%	42%	85%	43%

2.2 Compared Parameters

Parameter	Planned	Actual	Parameter	Planned	Actual
Instrument	ACIS	ACIS	Obspar format version number	7	7
Detector	ACIS-23567	ACIS-23567	Obspar file type	PREDICTED	ACTUAL
Grating	NONE	NONE	Obspar update status	NONE	UPDATED
Data mode	VFAINT	VFAINT	Number of optional ACIS chips dropped	0	0
Observation mode	POINTING	POINTING	On-chip summing requested	N	N
[deg] Pointing RA	95.340117	95.39199768969814	Subarray requested	NONE	NONE
[deg] Pointing Dec	-62.380720	-62.3677679656759	Alternating exposures requested	N	N
[deg] Pointing Roll	357.336959	357.5395353454458	[s] Primary exposure time	0.000000	3.1
[s] Window start time (MET)	312854465.184000	312854465.184000			
[s] Window stop time (MET)	320716865.184000	320716865.184000			
[mm] SIM focus pos	-0.684267	-0.6828225247311905			
[mm] SIM defocus	0	0.001444936568705701			
[mm] SIM translation stage pos	-190.132523	-190.1425803651734			
[mm] SIM translation stage offset	0	0.01005778216563158			
[s] Observation start time (MET)	315343293.184000	315341858.49364			
Observation start date	2007-12-29T19:20:28	2007-12-29T18:57:38			
[s] Observation end time (MET)	315363673.184000	315364366.98223			
Observation end date	2007-12-30T01:00:08	2007-12-30T01:12:46			
Read mode	TIMED	TIMED			

2.3 Aspect



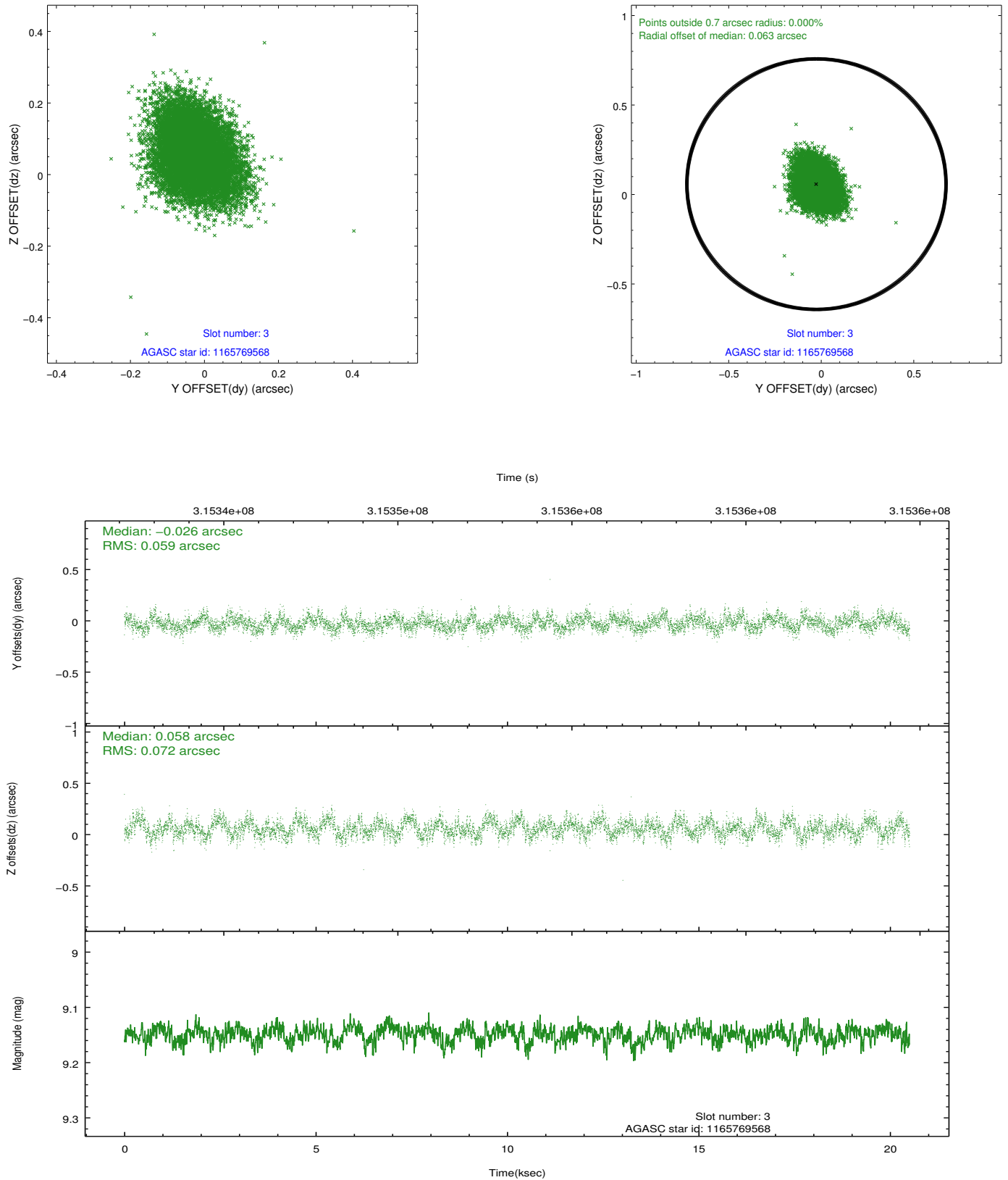


Slot Statistics

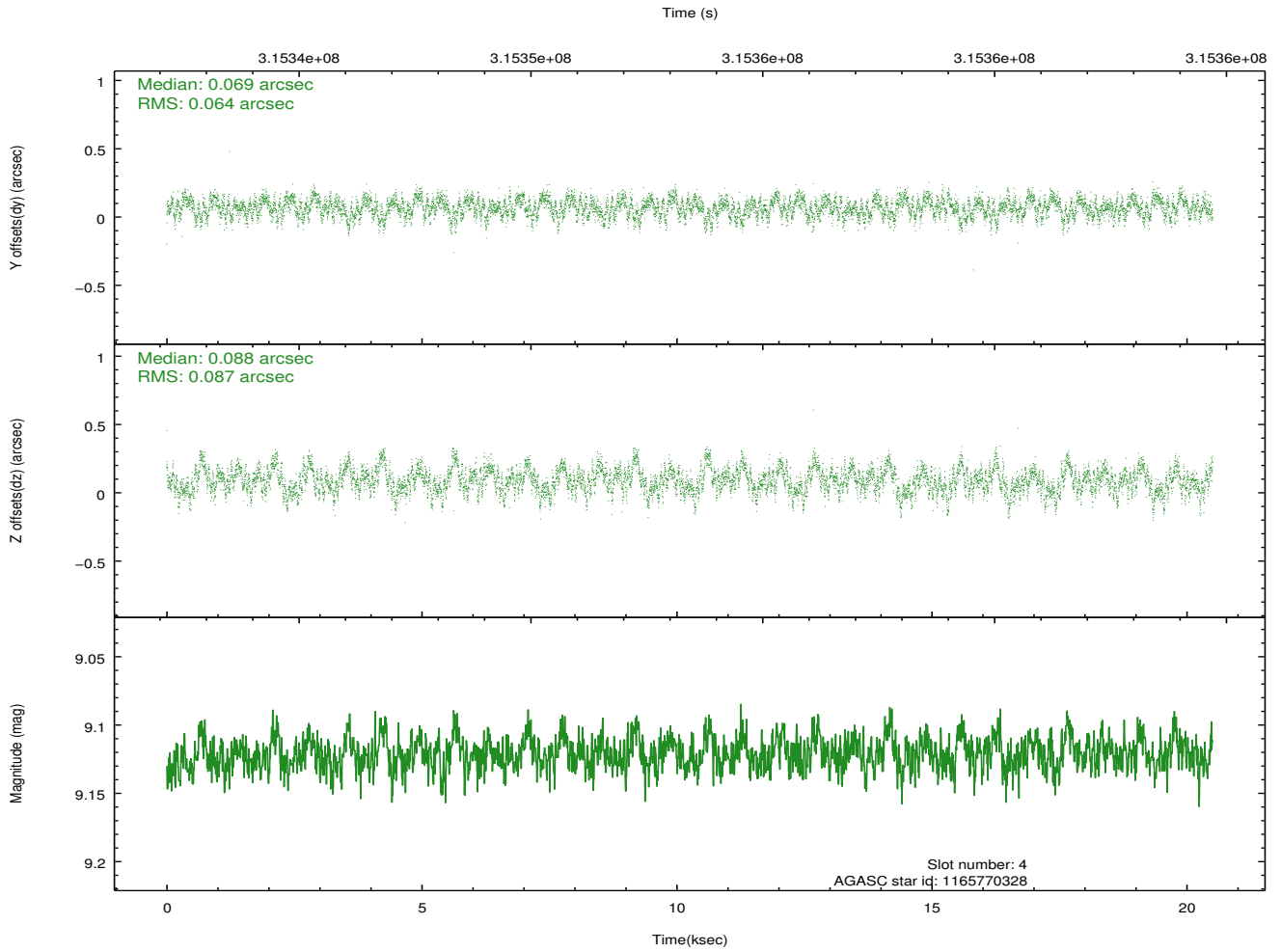
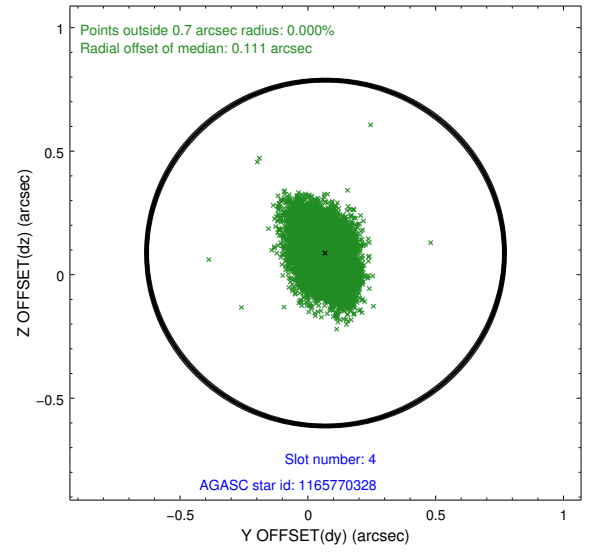
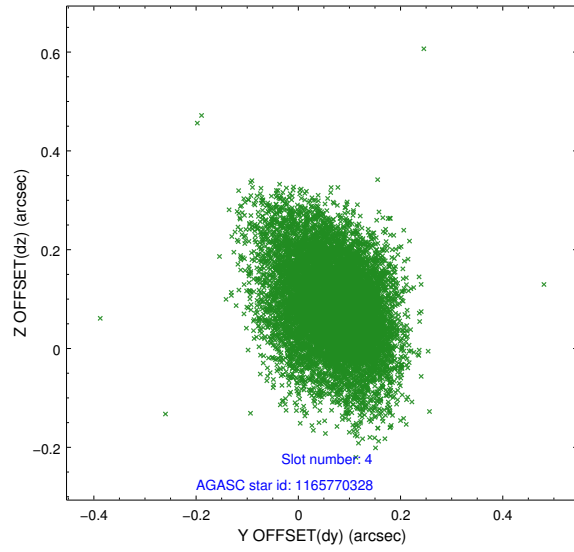
slot	status	id	mag	n_pts	med_dy	med_dz	dr1	dr2	ra	dec	mean_y	mean_z
0	FID	ACIS-S-1	7.19	5000	0.053	-0.021	0.010	0.018	0.000000	0.000000	931.24	-1730.86
1	FID	ACIS-S-4	7.19	5003	0.092	-0.007	0.008	0.015	0.000000	0.000000	2148.80	173.12
2	FID	ACIS-S-5	7.22	5003	-0.171	0.040	0.008	0.017	0.000000	0.000000	-1817.61	166.98
3	GUIDE	1165769568	9.15	9995	-0.026	0.058	0.099	0.158	94.966799	-61.821220	-727.51	1980.88
4	GUIDE	1165770328	9.12	9996	0.069	0.088	0.112	0.193	94.916512	-61.741093	-828.09	2264.72
5	GUIDE	1166288232	8.45	9998	-0.037	0.106	0.067	0.105	96.353495	-62.422658	1694.70	-84.35
6	GUIDE	1166289624	7.97	10004	0.045	-0.262	0.074	0.115	95.229966	-62.354097	-187.77	86.98
7	GUIDE	1166290504	9.16	9997	-0.053	0.010	0.079	0.127	94.421217	-62.304320	-1547.96	192.75

2.4 Star Slots

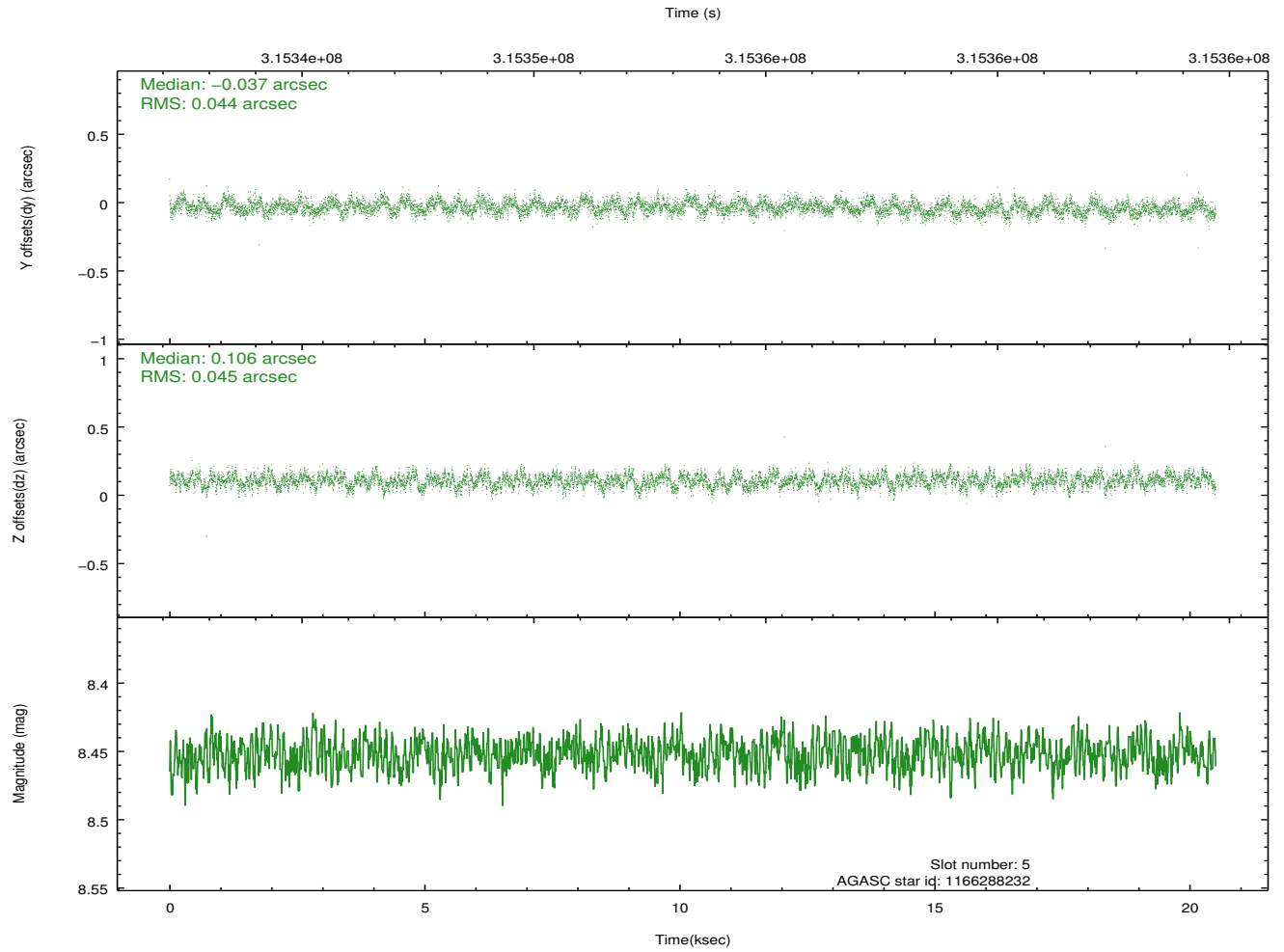
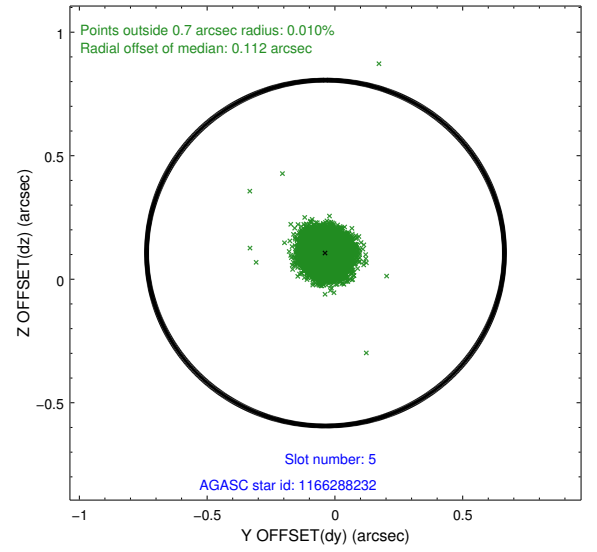
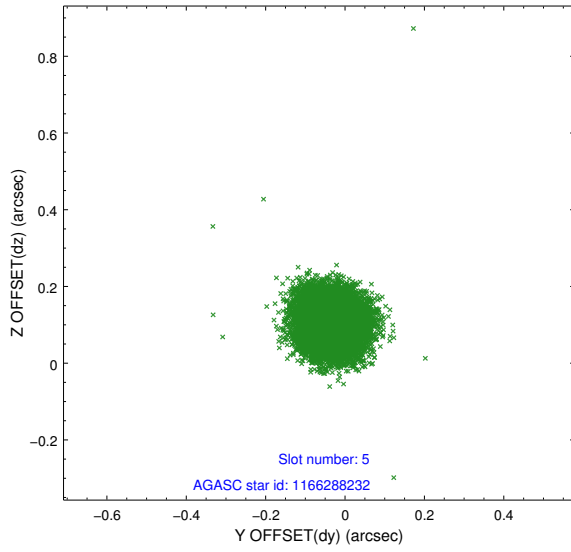
2.4.1 Slot 3



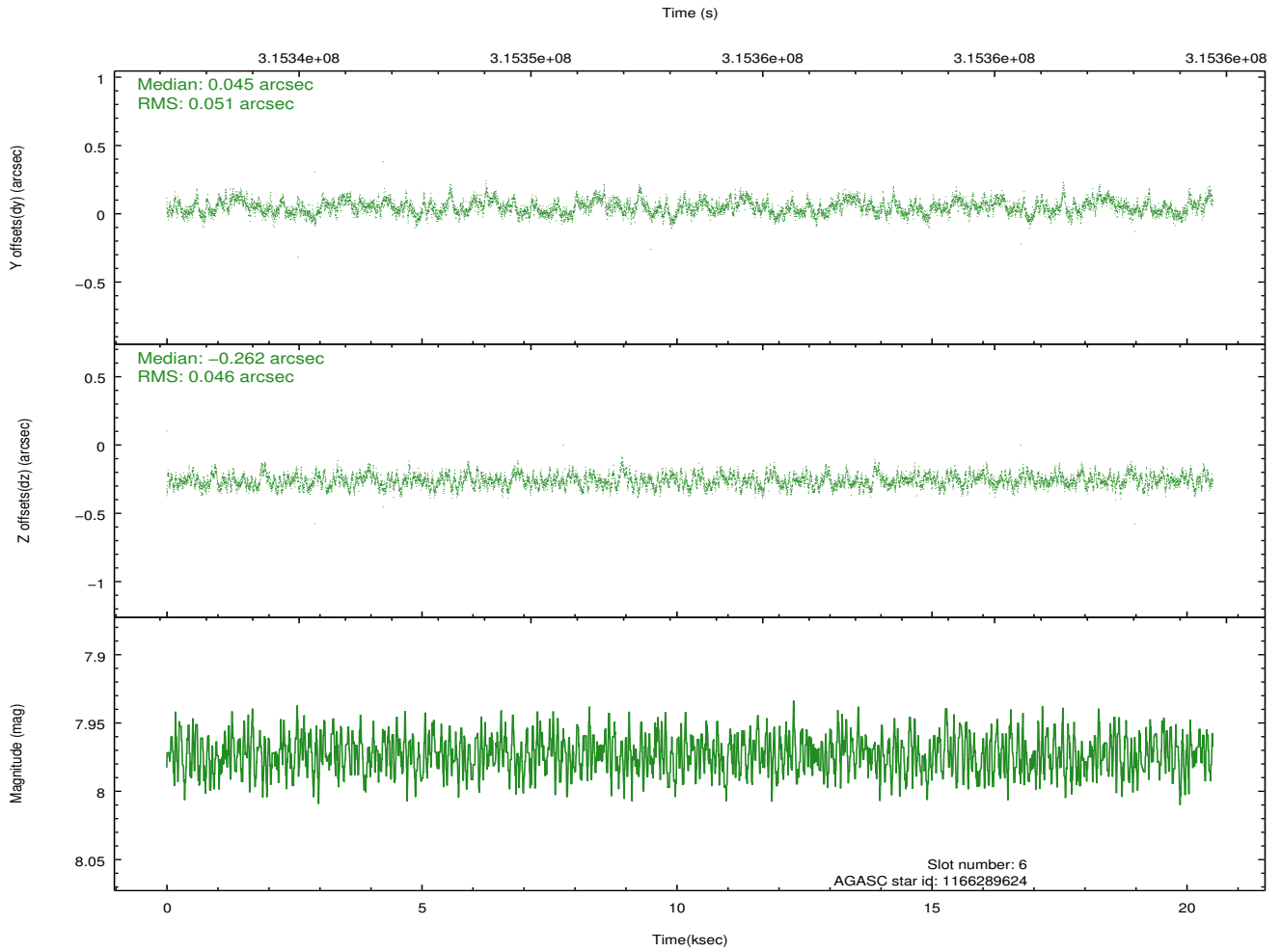
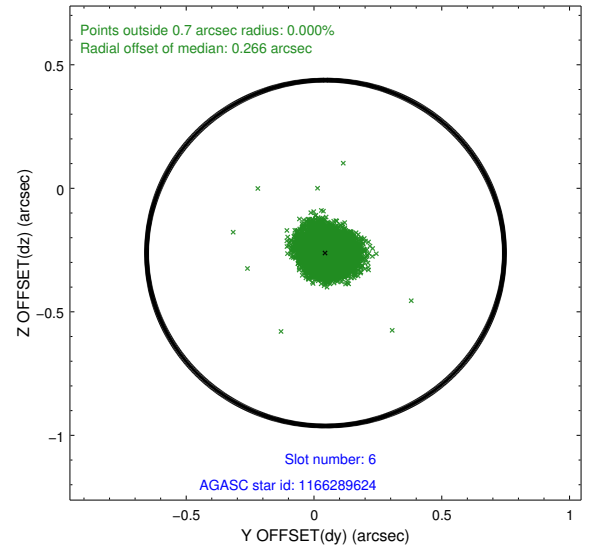
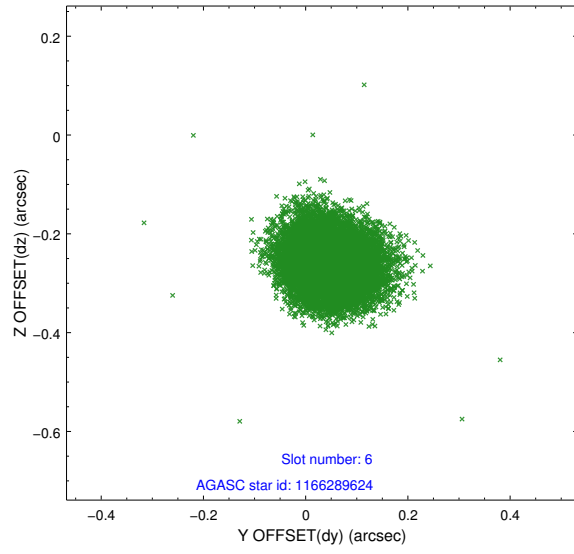
2.4.2 Slot 4



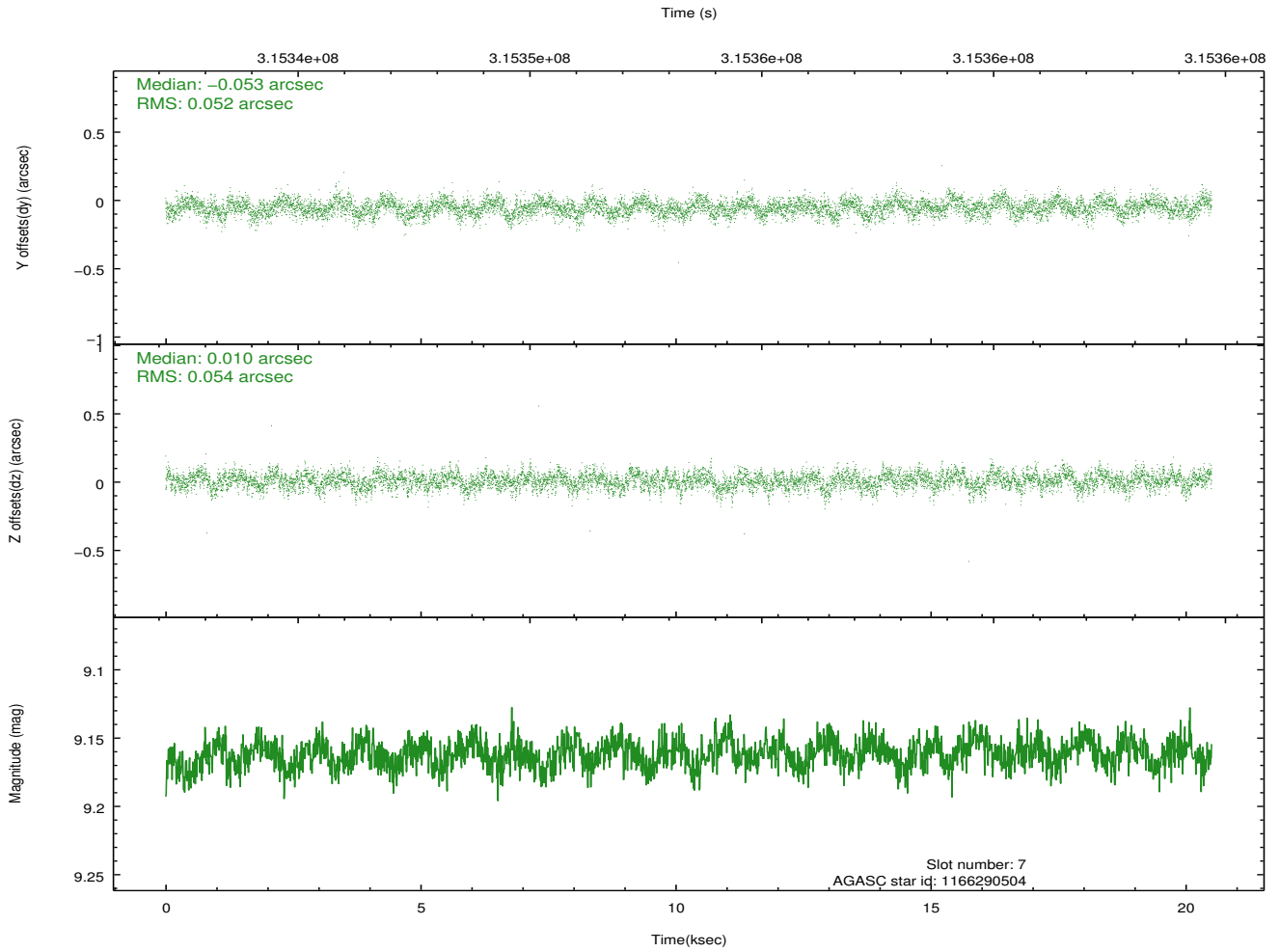
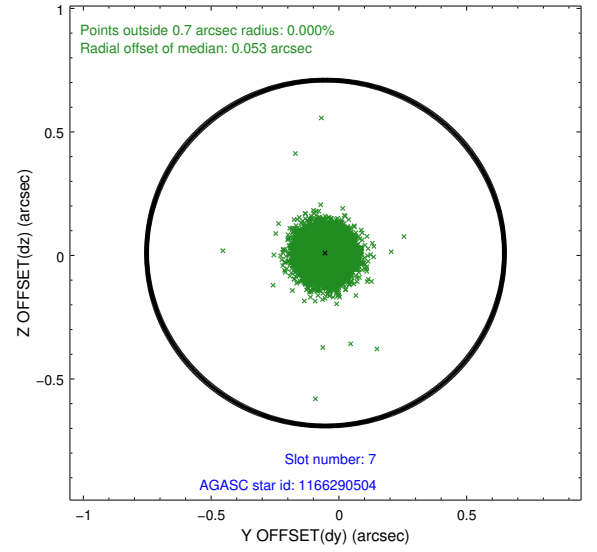
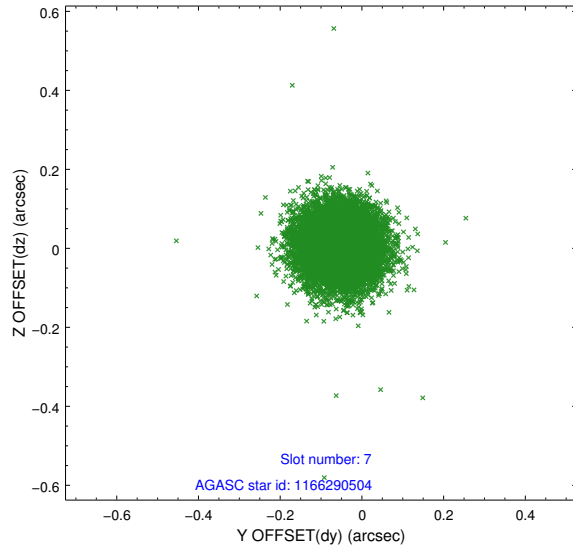
2.4.3 Slot 5



2.4.4 Slot 6

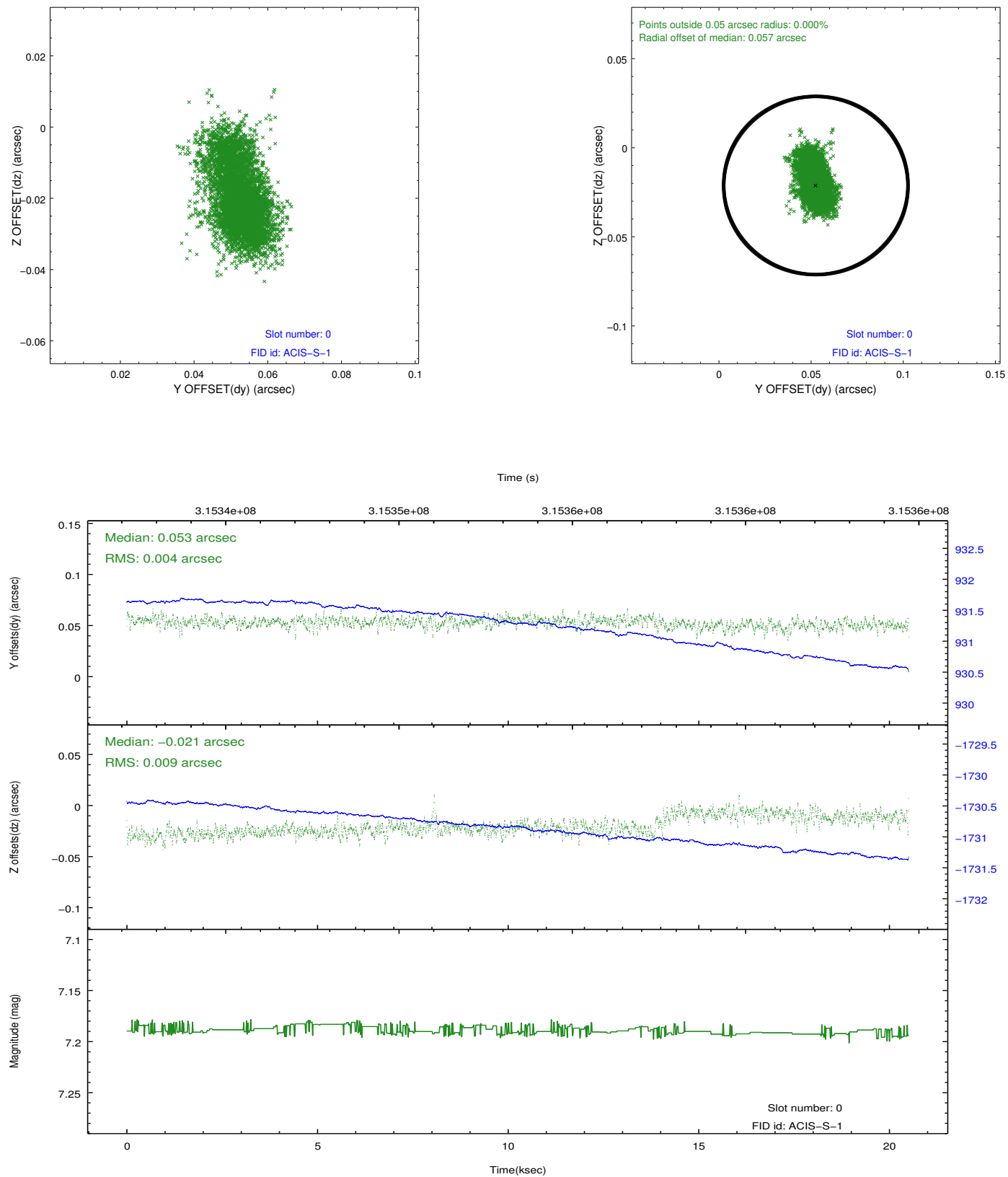


2.4.5 Slot 7

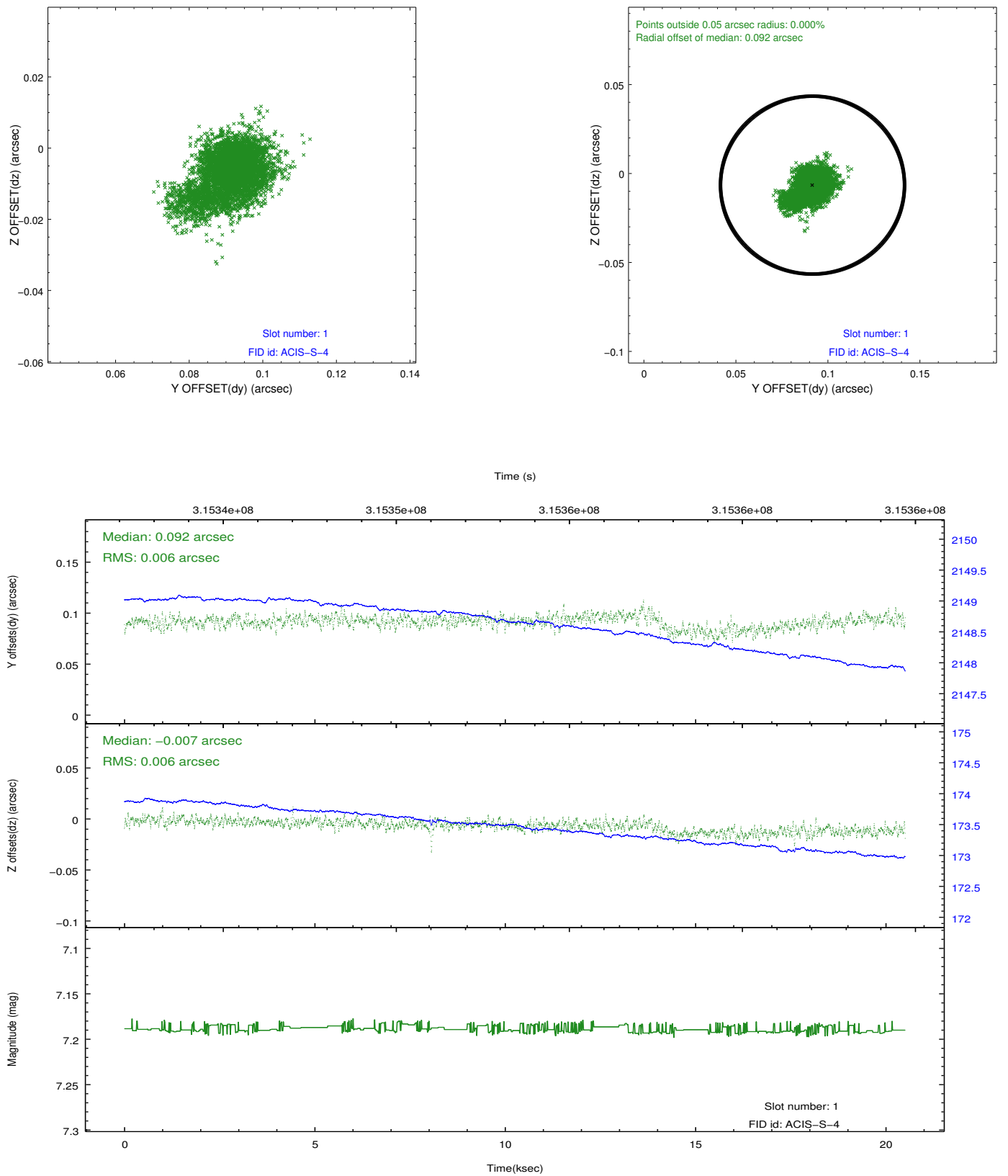


2.5 FID Slots

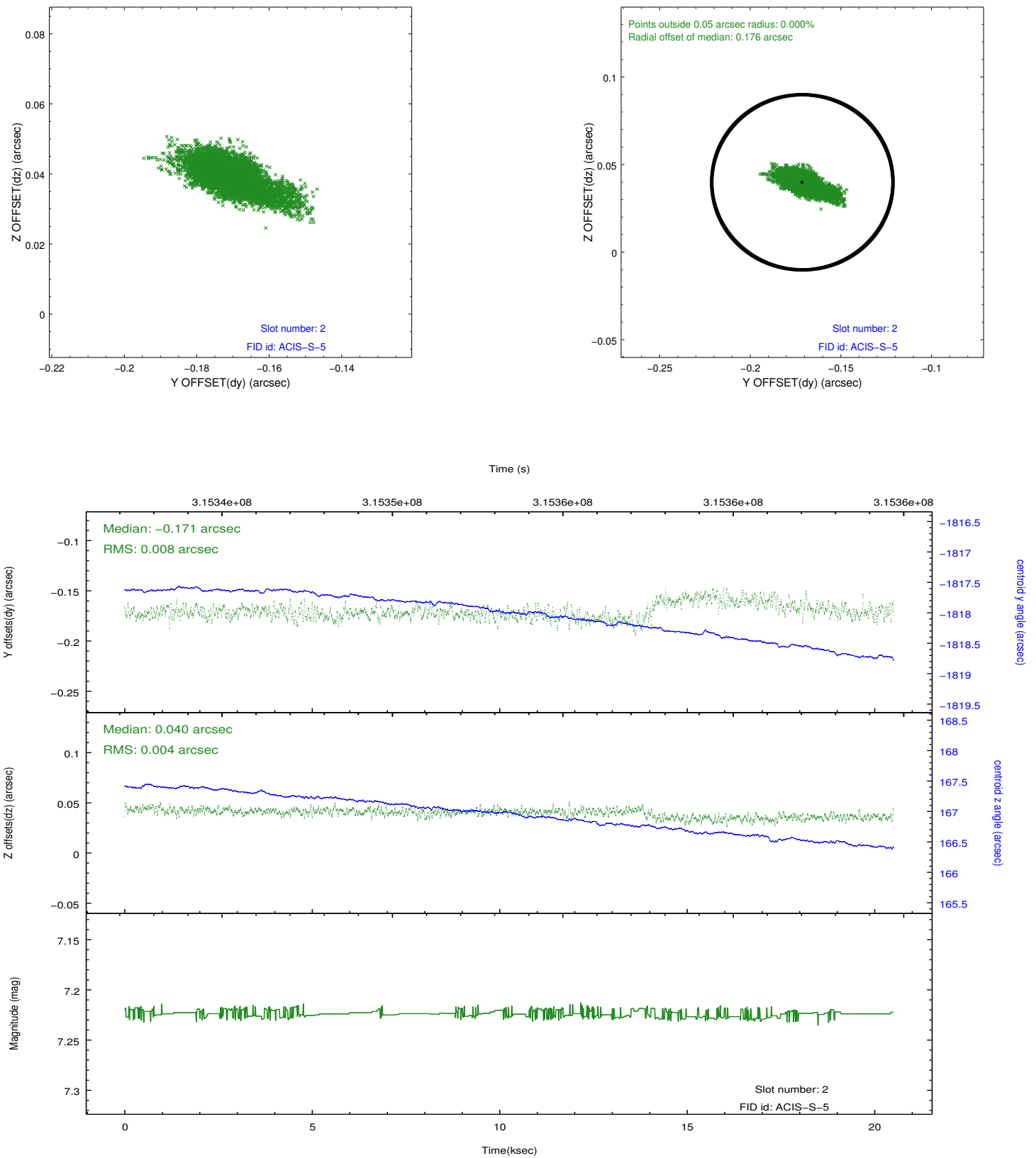
2.5.1 Slot 0



2.5.2 Slot 1



2.5.3 Slot 2



A Summary

A.1 Status

V&V Scientist	Jen Lauer
V&V Date (YYYY-MM-DD)	2012.05.08
V&V Edition	1
V&V Disposition and Status	OK
V&V Charge Time	20.5065001

A.2 Comments

Window constraint met.