

V&V Reference Report

L2 ASCDS Version : 8.4.4

Observation 8952 - L2 Version 2
Chandra X-Ray Center

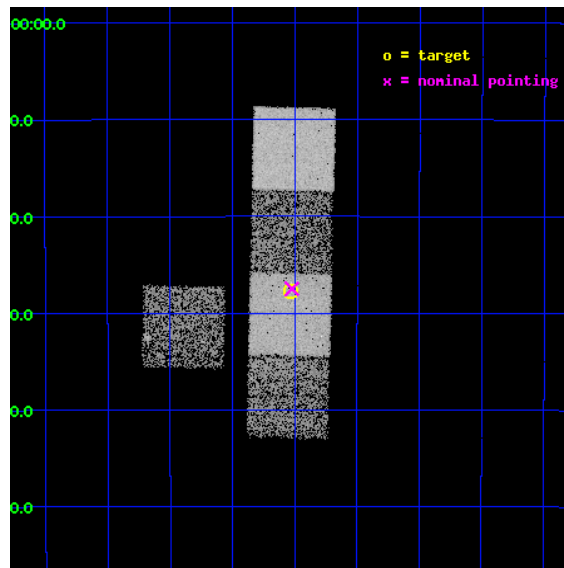
L2 Processing Date : May 8 2012

Contents

1	Front	2
2	OBI	3
2.1	OBI	3
2.1.1	Images	3
2.1.2	Bias	3
2.1.3	Parameters	4
2.1.4	Events	4
2.2	Compared Parameters	5
2.3	Aspect	6
2.4	Star Slots	9
2.4.1	Slot 3	9
2.4.2	Slot 4	10
2.4.3	Slot 5	11
2.4.4	Slot 6	12
2.4.5	Slot 7	13
2.5	FID Slots	14
2.5.1	Slot 0	14
2.5.2	Slot 1	15
2.5.3	Slot 2	16
A	Summary	17
A.1	Status	17
A.2	Comments	17

1 Front

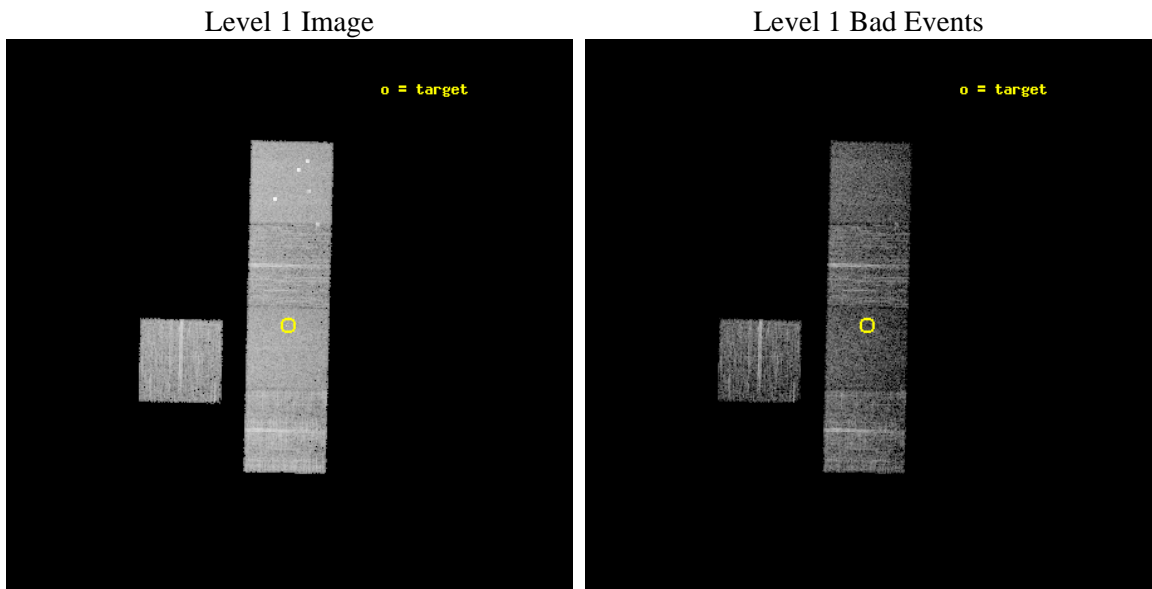
seq_num	300208	Sequence number
obs_id	8952	Observation id
title	A Chandra Legacy Survey of Dynamically Active Globular Clusters	Pr
observer	Prof. David Pooley	Principal investigator
object	NGC 6304	Source name
dtcycle	0	
cycle	P	events from which exps? Prim/Second/Both
ra_targ	258.63375	Observer's specified target RA [deg]
dec_targ	-29.462222	Observer's specified target Dec [deg]
ra_nom	258.63068002945	Nominal RA [deg]
dec_nom	-29.458155337431	Nominal Dec [deg]
roll_nom	91.326343842842	Nominal Roll [deg]
revision	2	Processing version of data
ontime	5332.000041008	Sum of GTIs [s]
livetime	5262.3335351109	Livetime [s]
ontime3	5332.000041008	Sum of GTIs [s]
ontime5	5332.000041008	Sum of GTIs [s]
ontime6	5332.000041008	Sum of GTIs [s]
ontime7	5332.000041008	Sum of GTIs [s]
ontime8	5332.000041008	Sum of GTIs [s]
l2events	65113	Number of level 2 events



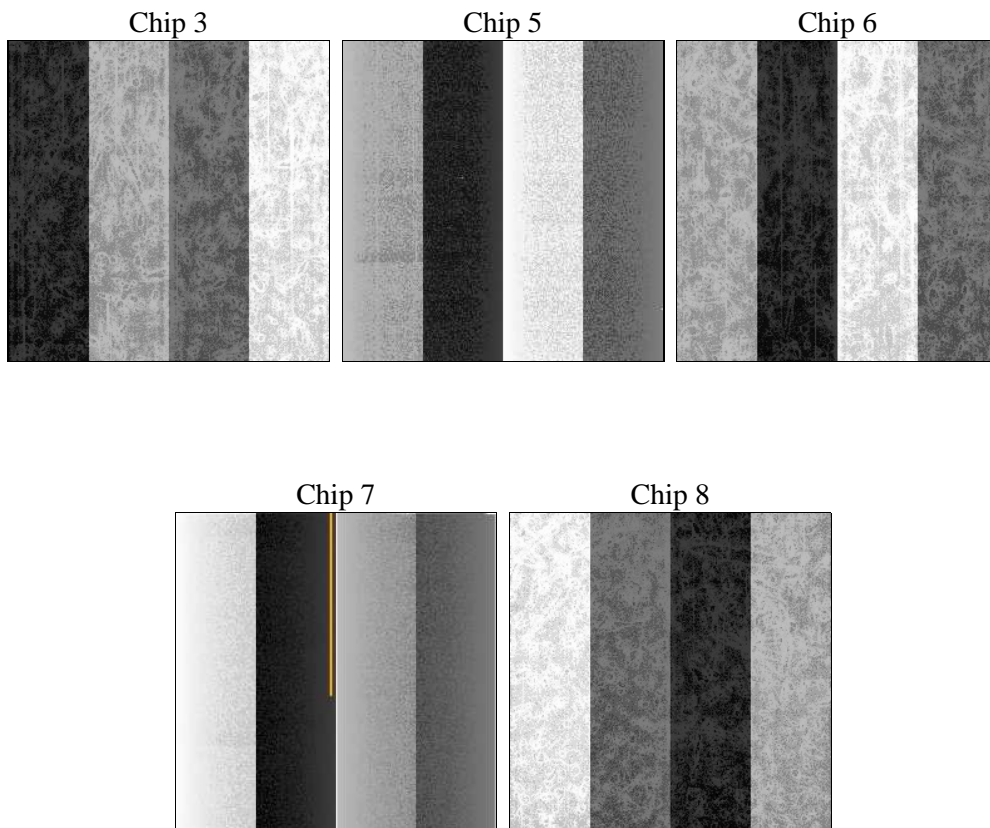
2 OBI

2.1 OBI

2.1.1 Images



2.1.2 Bias



2.1.3 Parameters

obi_num	0	Obi number	sched_exp_time	5300.000000	[s] Scheduled observation exposure time
ascdsver	8.4.4	Processing system revision	ontime	5332.000041008	Sum of GTIs [s]
caldsver	4.4.9	 	ontime3	5332.000041008	Sum of GTIs [s]
date	2012-05-08T15:04:04	Date and time of file creation	ontime5	5332.000041008	Sum of GTIs [s]
revision	2	Processing version of data	ontime6	5332.000041008	Sum of GTIs [s]
			ontime7	5332.000041008	Sum of GTIs [s]
			ontime8	5332.000041008	Sum of GTIs [s]
			l1events	259106	Number of level 1 events

2.1.4 Events

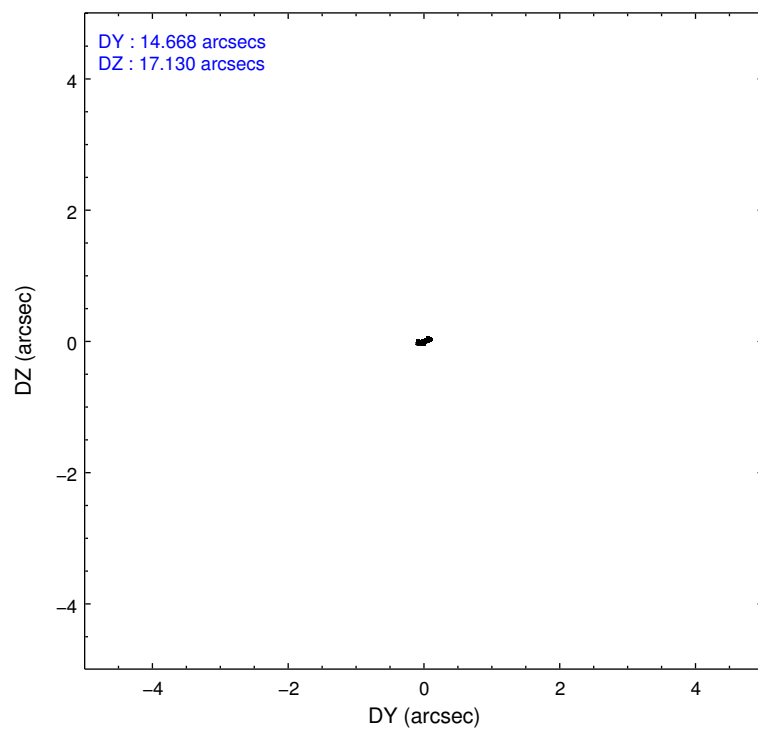
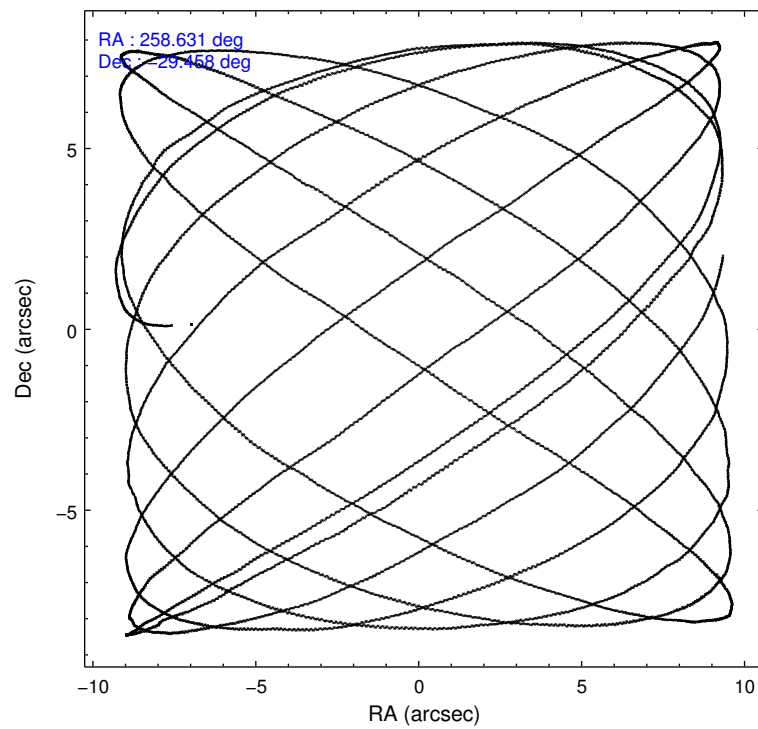
	ccd 3	ccd 5	ccd 6	ccd 7	ccd 8
level 1 events	43116	64288	44925	49268	57509
rejected events	38496	30548	39714	26006	43560
rejected %	89%	47%	88%	52%	75%

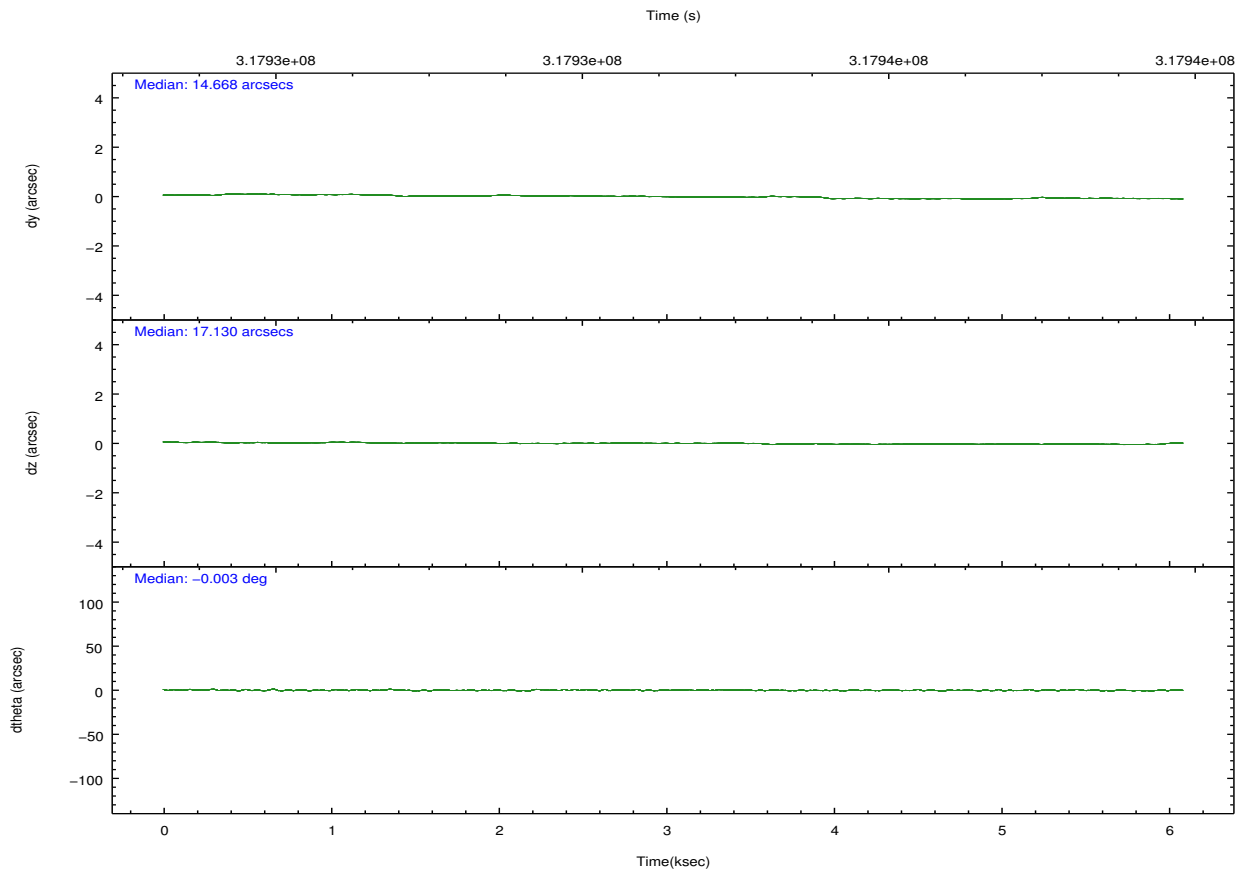
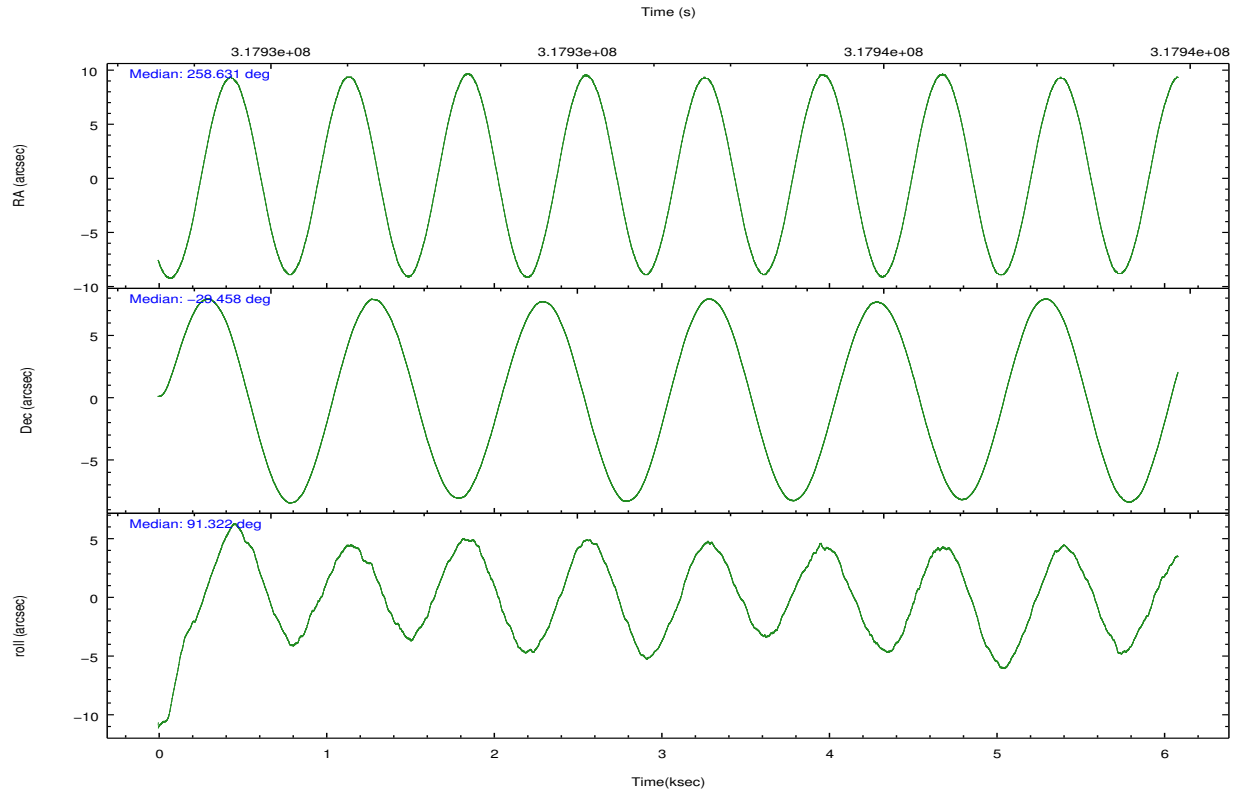
	ccd 3	ccd 5	ccd 6	ccd 7	ccd 8
grade 0 events	1863	6000	2182	2421	4390
	4%	9%	4%	4%	7%
grade 1 events	22	238	25	62	56
	0%	0%	0%	0%	0%
grade 2 events	939	9271	1046	4844	3085
	2%	14%	2%	9%	5%
grade 3 events	463	1468	520	2216	1522
	1%	2%	1%	4%	2%
grade 4 events	494	1290	508	2182	1414
	1%	2%	1%	4%	2%
grade 5 events	1722	4761	1739	5072	2575
	3%	7%	3%	10%	4%
grade 6 events	865	15731	957	11612	3539
	2%	24%	2%	23%	6%
grade 7 events	36748	25529	37948	20859	40928
	85%	39%	84%	42%	71%

2.2 Compared Parameters

Parameter	Planned	Actual	Parameter	Planned	Actual
Instrument	ACIS	ACIS	Obspar format version number	7	7
Detector	ACIS-35678	ACIS-35678	Obspar file type	PREDICTED	ACTUAL
Grating	NONE	NONE	Obspar update status	NONE	UPDATED
Data mode	VFAINT	VFAINT	CCD I0 on	N	N
Observation mode	POINTING	POINTING	CCD I1 on	N	N
[deg] Pointing RA	258.647409	258.630680029448	CCD I2 on	O1	N
[deg] Pointing Dec	-29.481315	-29.45815533743102	CCD I3 on	O2	Y
[deg] Pointing Roll	91.177954	91.32634384284239	CCD S0 on	N	N
[mm] SIM focus pos	-0.684267	-0.6828225247311905	CCD S1 on	Y	Y
[mm] SIM defocus	0	0.001444936568705701	CCD S2 on	Y	Y
[mm] SIM translation stage pos	-190.132523	-190.1425803651734	CCD S3 on	Y	Y
[mm] SIM translation stage offset	0	0.01005778216563158	CCD S4 on	Y	Y
[s] Observation start time (MET)	317932332.184000	317931102.91909	CCD S5 on	N	N
Observation start date	2008-01-28T18:31:07	2008-01-28T18:11:42	Number of optional ACIS chips dropped	1	1
[s] Observation end time (MET)	317937632.184000	317938589.00695	On-chip summing requested	N	N
Observation end date	2008-01-28T19:59:27	2008-01-28T20:16:29	Subarray requested	NONE	NONE
Read mode	TIMED	TIMED	Alternating exposures requested	N	N
			[s] Primary exposure time	0.000000	3.1

2.3 Aspect



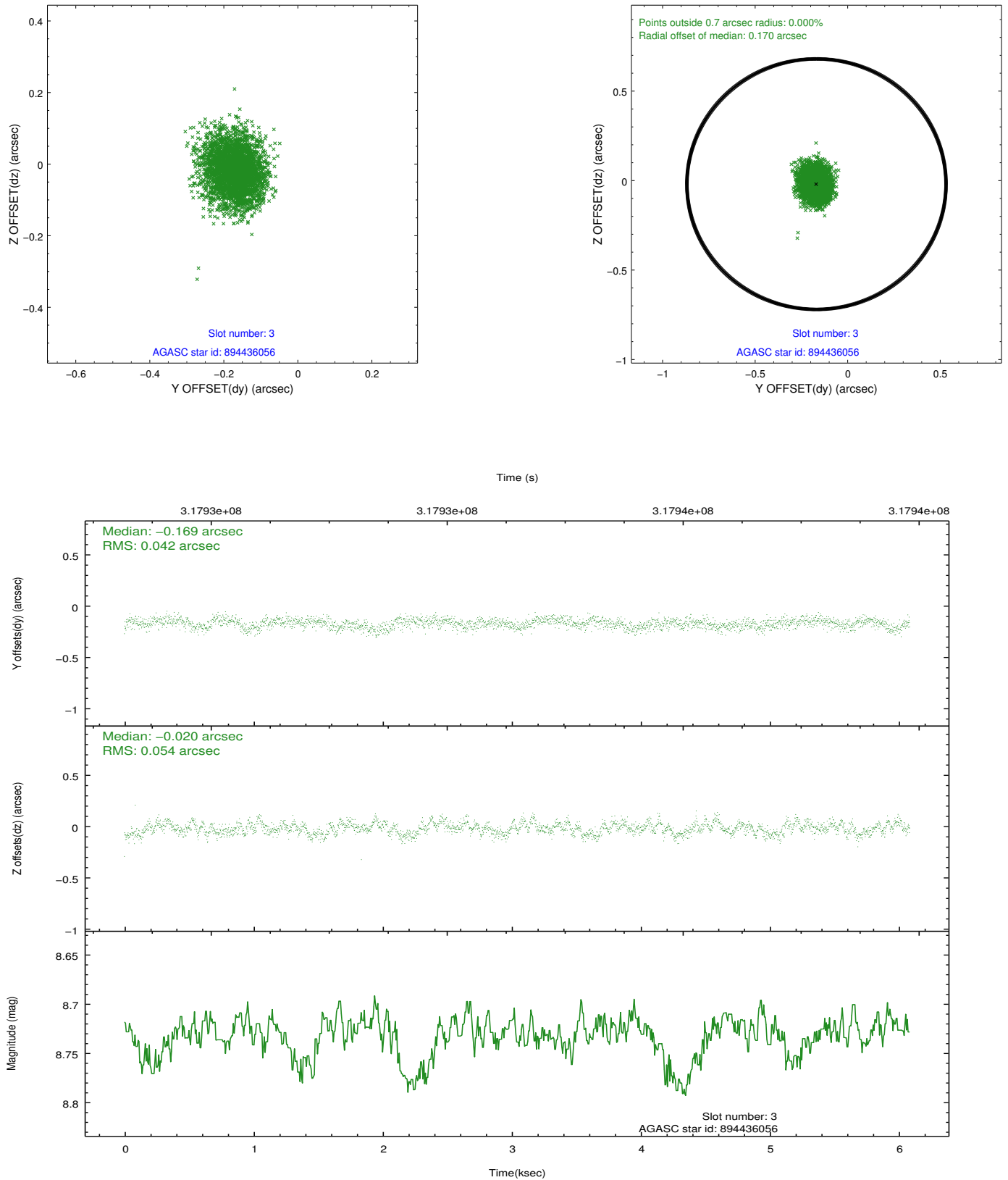


Slot Statistics

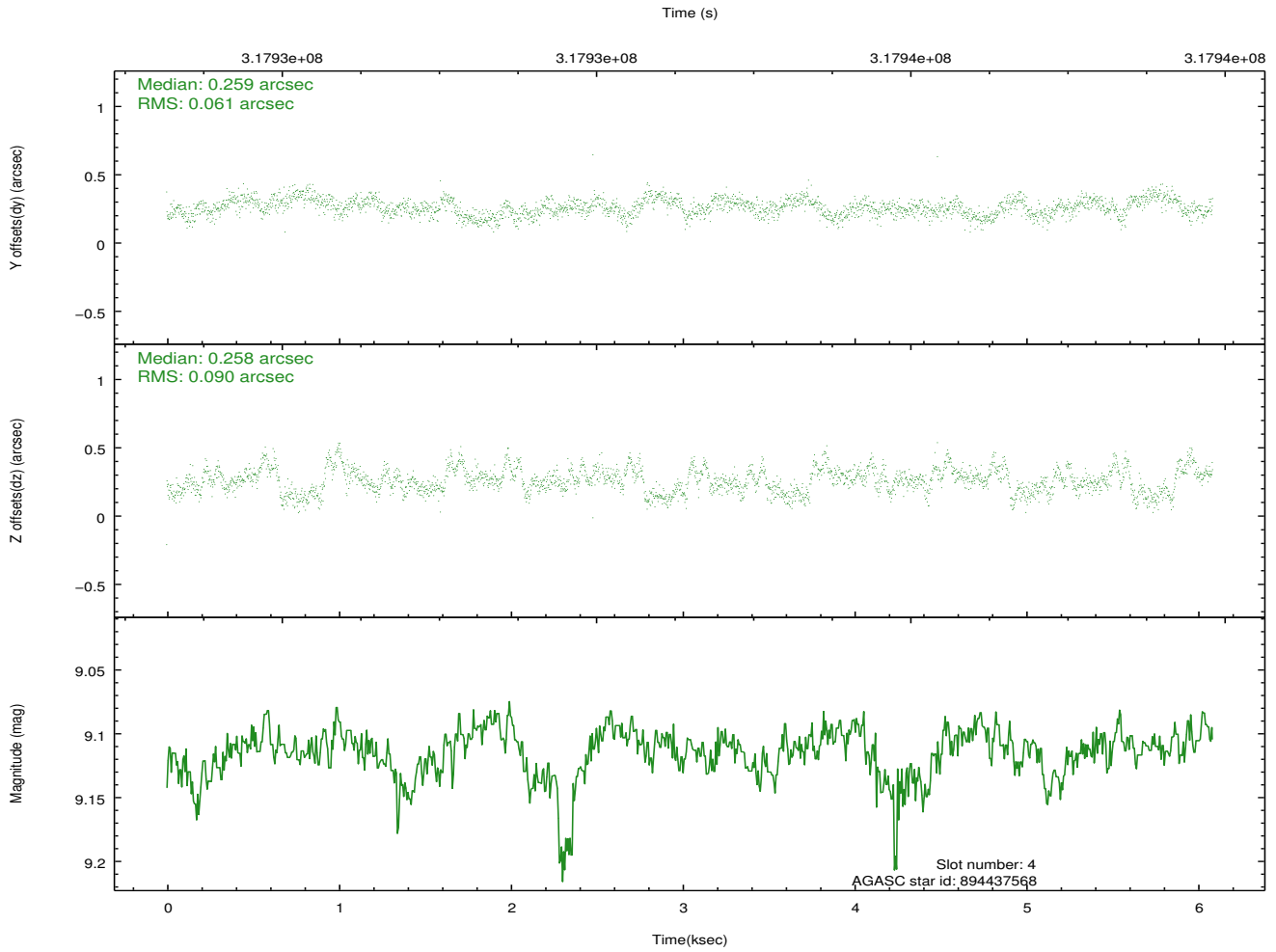
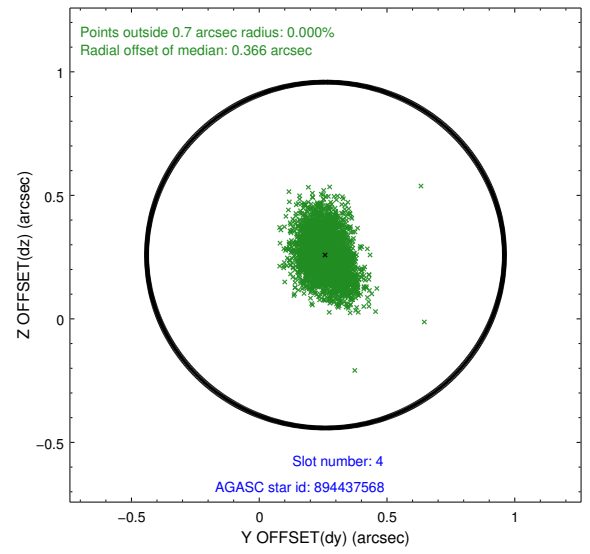
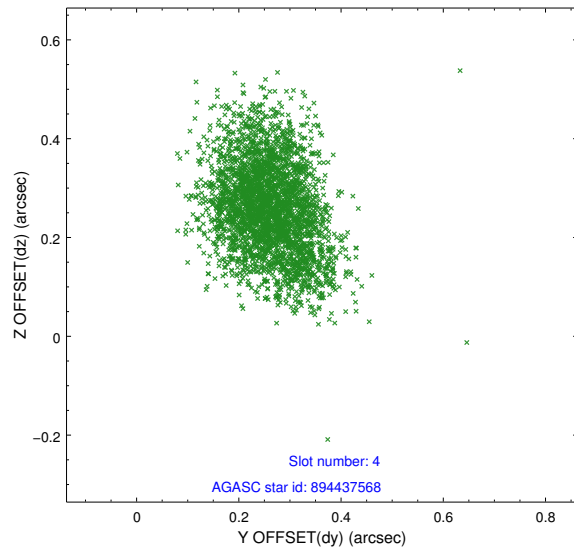
slot	status	id	mag	n_pts	med_dy	med_dz	dr1	dr2	ra	dec	mean_y	mean_z
0	FID	ACIS-S-2	7.09	1485	-0.059	-0.052	0.007	0.011	0.000000	0.000000	-767.72	-1738.54
1	FID	ACIS-S-4	7.18	1485	0.172	0.042	0.005	0.009	0.000000	0.000000	2145.38	168.95
2	FID	ACIS-S-5	7.22	1485	-0.145	0.018	0.006	0.011	0.000000	0.000000	-1819.36	163.80
3	GUIDE	894436056	8.73	2969	-0.169	-0.020	0.072	0.118	258.167534	-29.090163	1435.69	1480.50
4	GUIDE	894437568	9.11	2965	0.259	0.258	0.114	0.188	259.135842	-29.731019	-932.67	-1507.20
5	GUIDE	894439256	7.93	2969	-0.188	0.085	0.073	0.120	258.952030	-29.185927	1041.98	-979.44
6	GUIDE	894440160	9.15	2967	-0.130	-0.154	0.075	0.123	258.244126	-28.947733	1944.74	1230.39
7	GUIDE	964821544	8.74	2967	0.232	-0.172	0.089	0.140	257.915435	-30.142183	-2338.46	2327.76

2.4 Star Slots

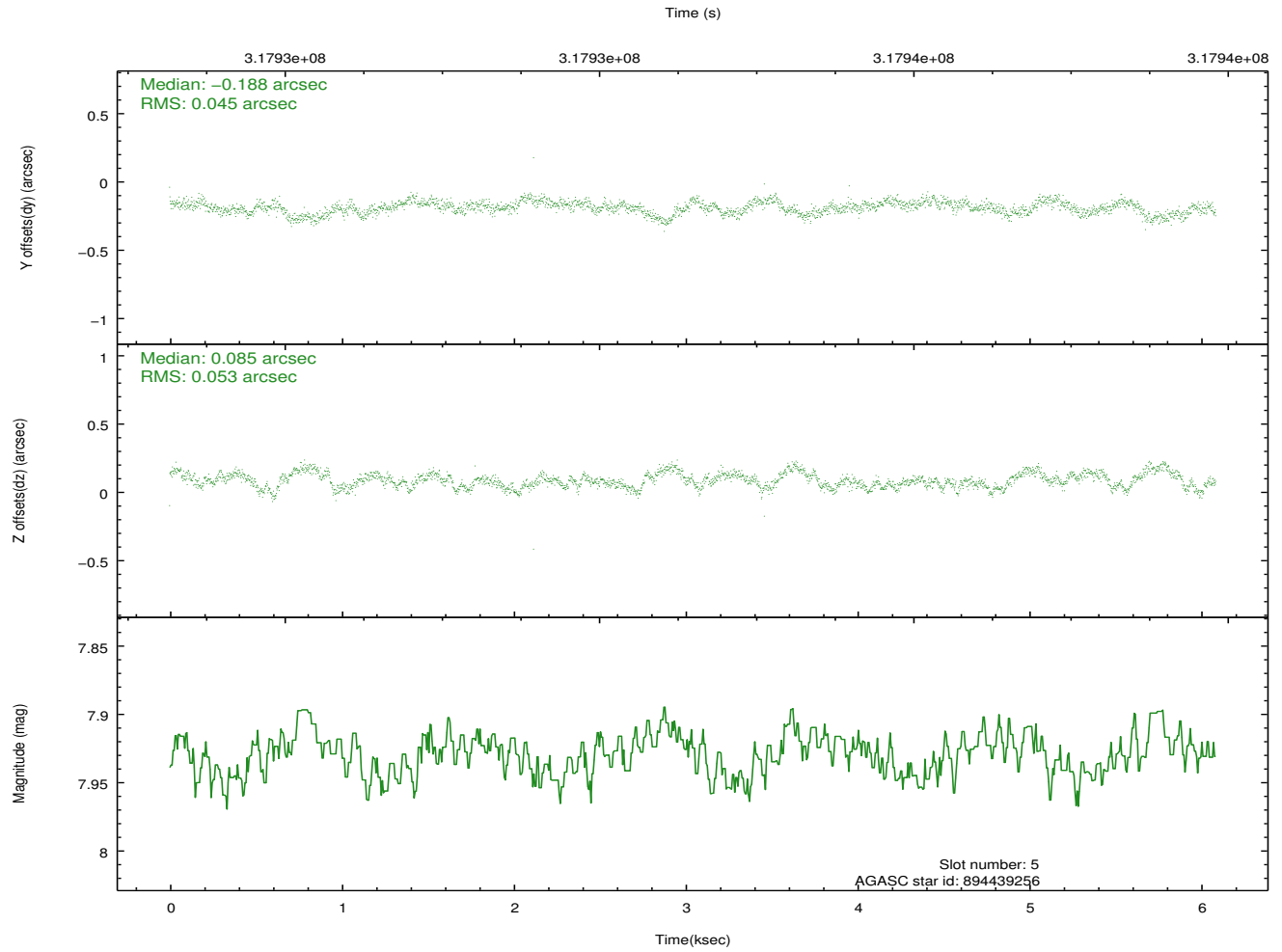
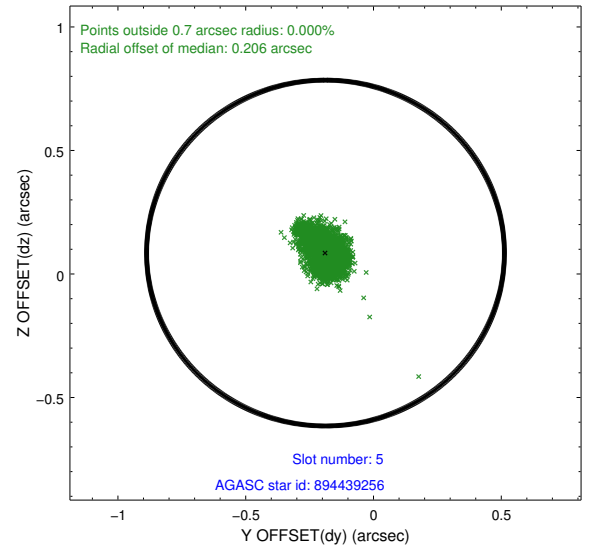
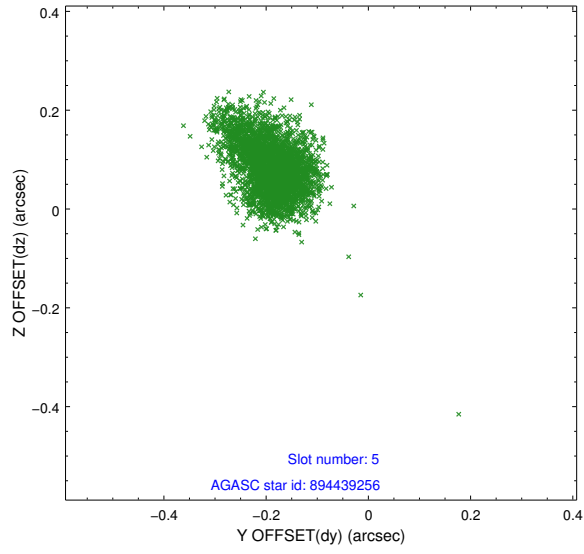
2.4.1 Slot 3



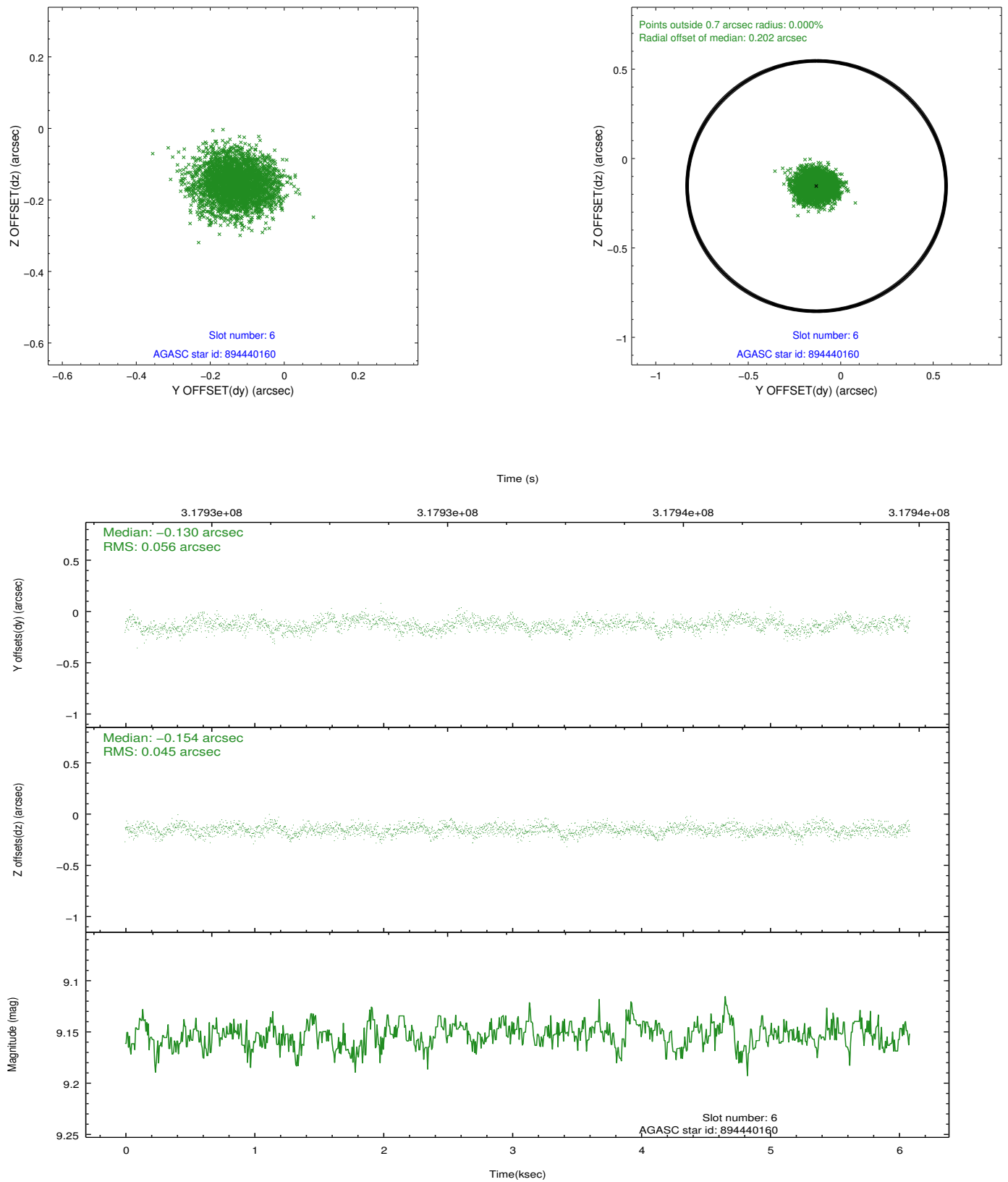
2.4.2 Slot 4



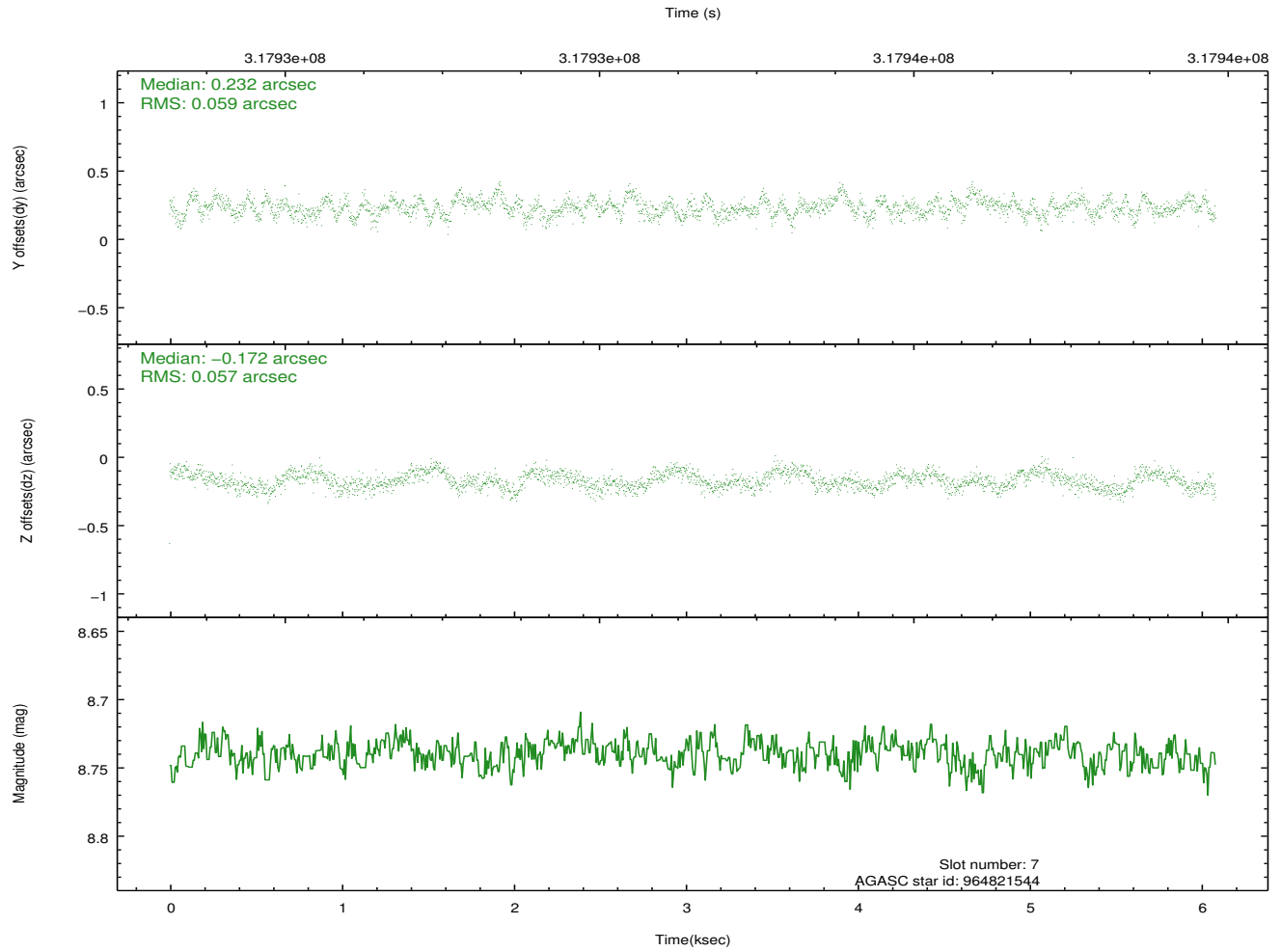
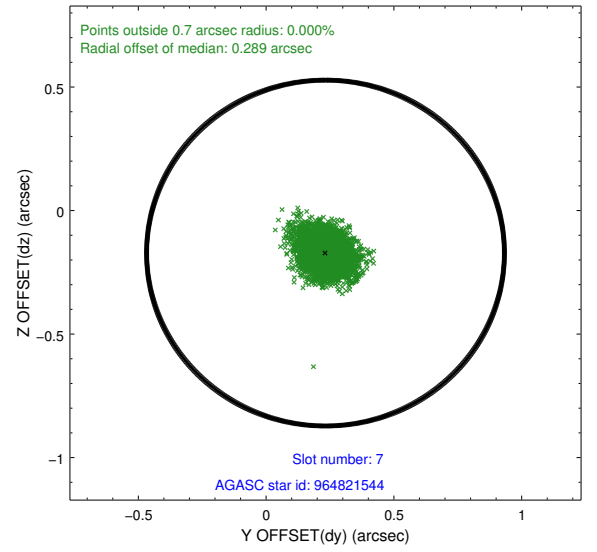
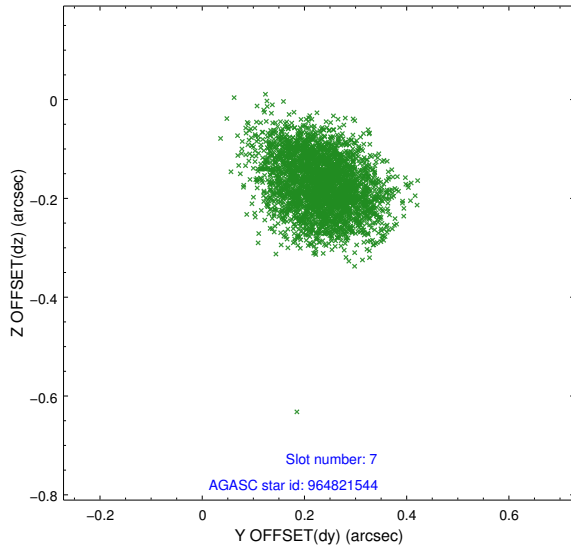
2.4.3 Slot 5



2.4.4 Slot 6

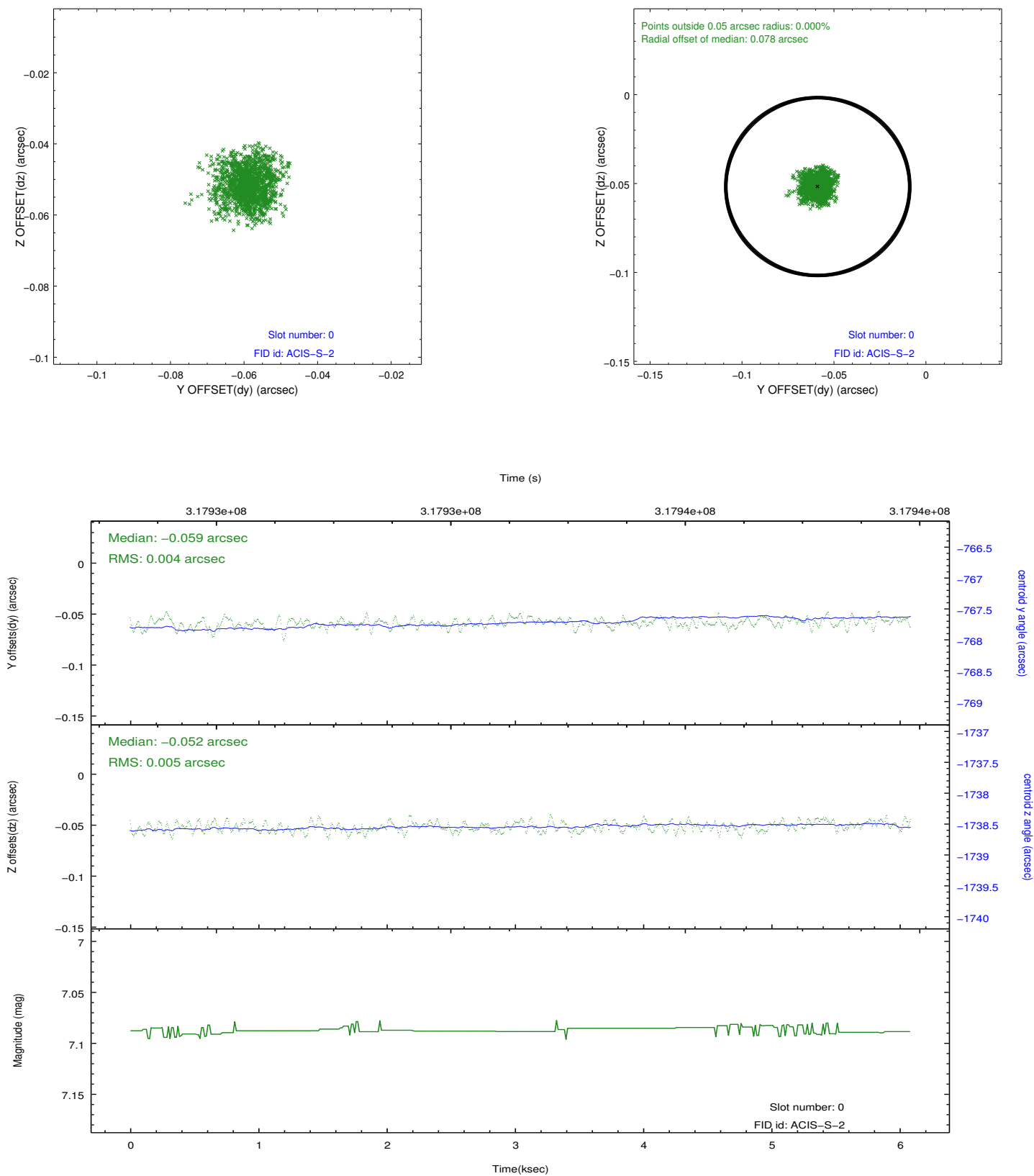


2.4.5 Slot 7

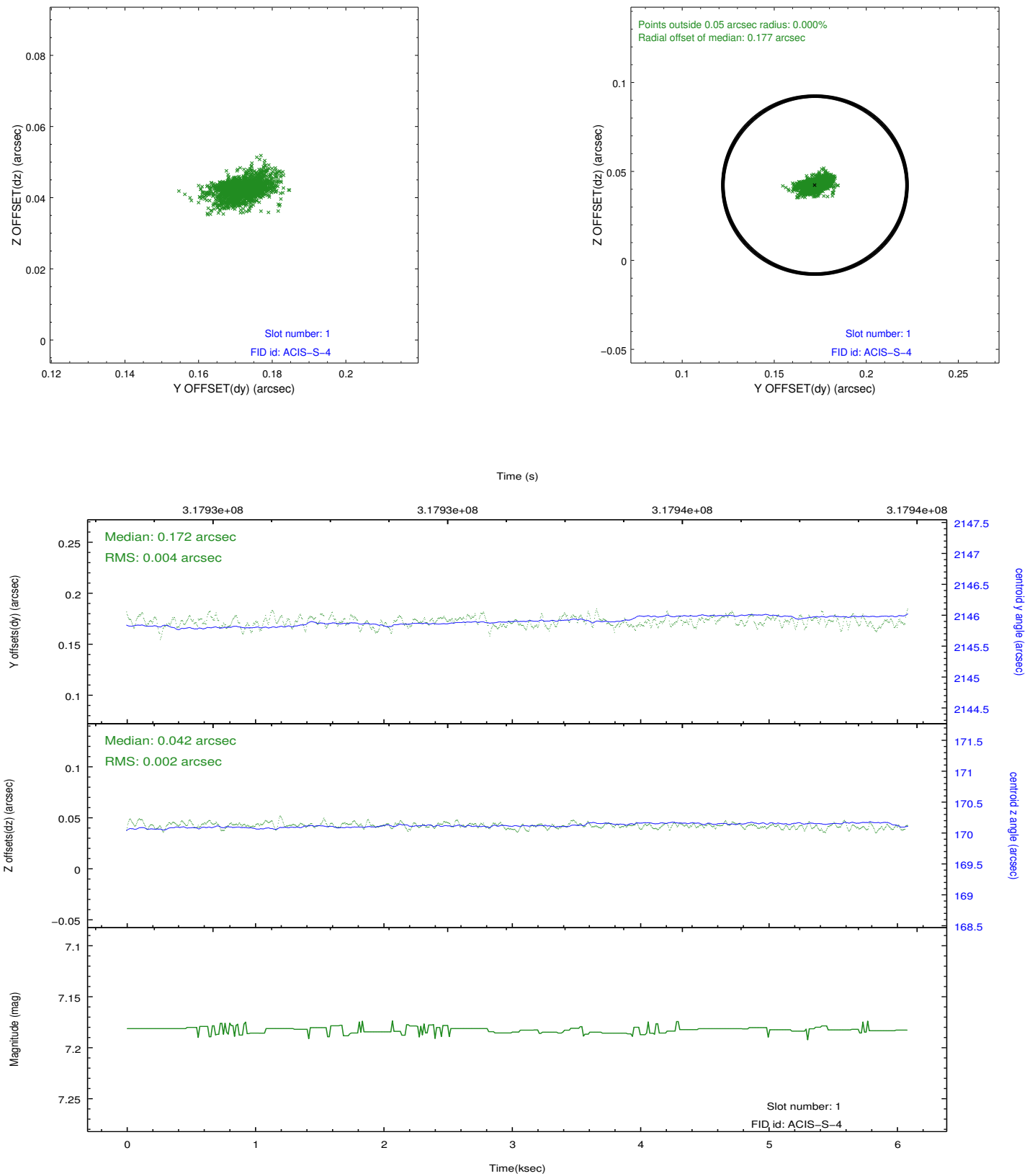


2.5 FID Slots

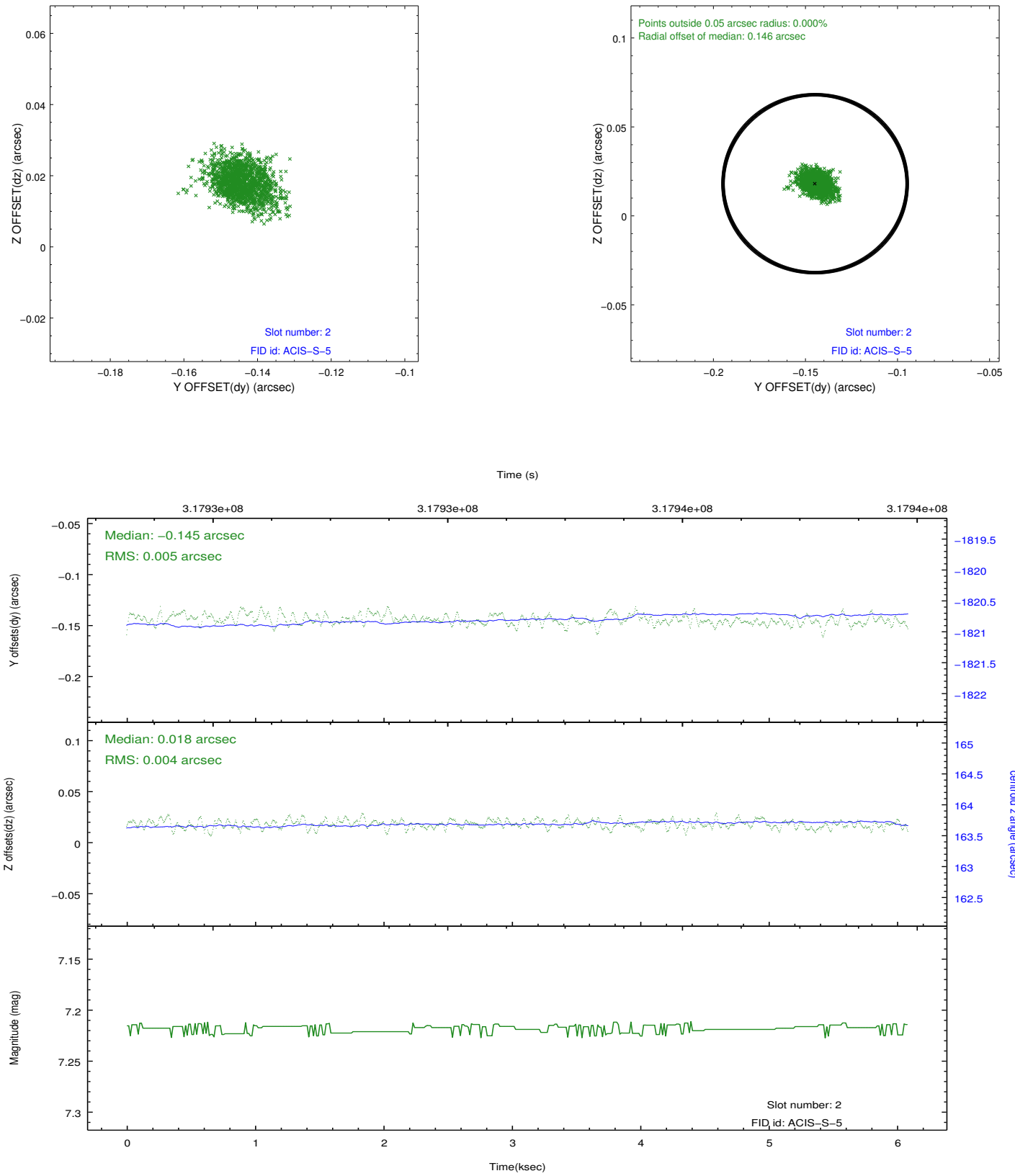
2.5.1 Slot 0



2.5.2 Slot 1



2.5.3 Slot 2



A Summary

A.1 Status

V&V Scientist	Jen Lauer
V&V Date (YYYY-MM-DD)	2012.05.10
V&V Edition	1
V&V Disposition and Status	OK
V&V Charge Time	5.33200004

A.2 Comments