

# V&V Reference Report

## L2 ASCDS Version : 8.4.4

Observation 8602 - L2 Version 2  
Chandra X-Ray Center

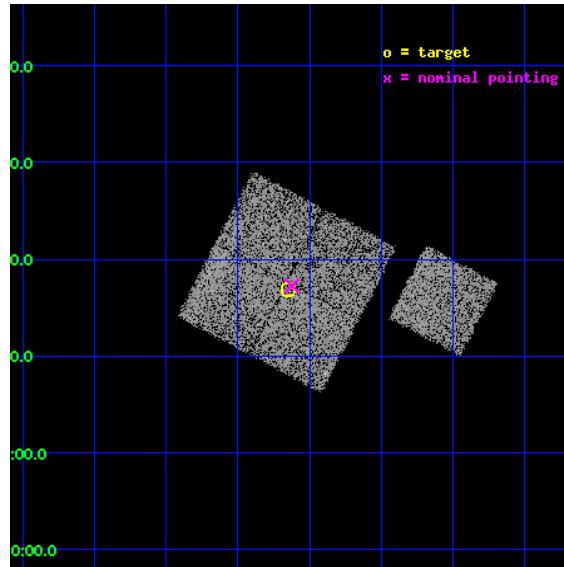
L2 Processing Date : May 19 2012

## Contents

<b>1</b>	<b>Front</b>	<b>2</b>
<b>2</b>	<b>OBI</b>	<b>3</b>
2.1	OBI . . . . .	3
2.1.1	Images . . . . .	3
2.1.2	Bias . . . . .	3
2.1.3	Parameters . . . . .	4
2.1.4	Events . . . . .	4
2.2	Compared Parameters . . . . .	5
2.3	Aspect . . . . .	6
2.4	Star Slots . . . . .	9
2.4.1	Slot 3 . . . . .	9
2.4.2	Slot 4 . . . . .	10
2.4.3	Slot 5 . . . . .	11
2.4.4	Slot 6 . . . . .	12
2.4.5	Slot 7 . . . . .	13
2.5	FID Slots . . . . .	14
2.5.1	Slot 0 . . . . .	14
2.5.2	Slot 1 . . . . .	15
2.5.3	Slot 2 . . . . .	16
<b>A</b>	<b>Summary</b>	<b>17</b>
A.1	Status . . . . .	17
A.2	Comments . . . . .	17

# 1 Front

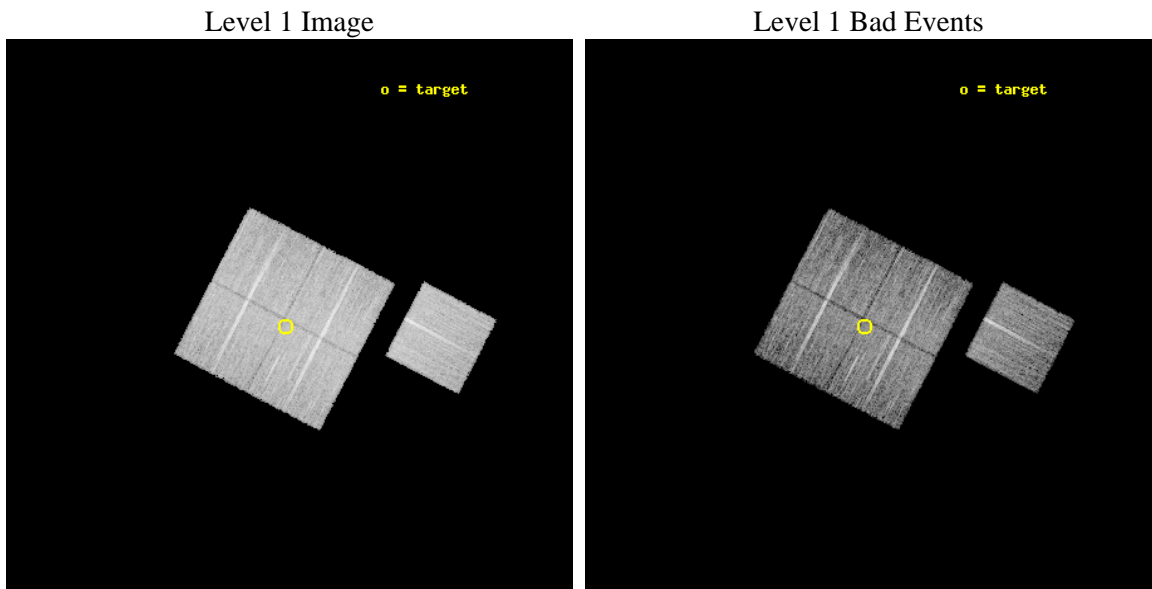
seq_num	900739	Sequence number
obs_id	8602	Observation id
title	Chandra Observations of the DEEP2 Fields	Proposal title
observer	Dr. Stephen Murray	Principal investigator
object	DEEP2 Field 3	Source name
dtcycle	0	&#160
cycle	P	events from which exps? Prim/Second/Both
ra_targ	352.66172	Observer's specified target RA [deg]
dec_targ	0.281845	Observer's specified target Dec [deg]
ra_nom	352.65597960379	Nominal RA [deg]
dec_nom	0.28756575936569	Nominal Dec [deg]
roll_nom	117.5087179577	Nominal Roll [deg]
revision	2	Processing version of data
ontime	9052.0000696182	Sum of GTIs [s]
livetime	8933.7290247232	Livetime [s]
ontime0	9052.0000696182	Sum of GTIs [s]
ontime1	9048.8590792418	Sum of GTIs [s]
ontime2	9048.8590593934	Sum of GTIs [s]
ontime3	9052.0000696182	Sum of GTIs [s]
ontime6	9052.0000696182	Sum of GTIs [s]
l2events	31654	Number of level 2 events



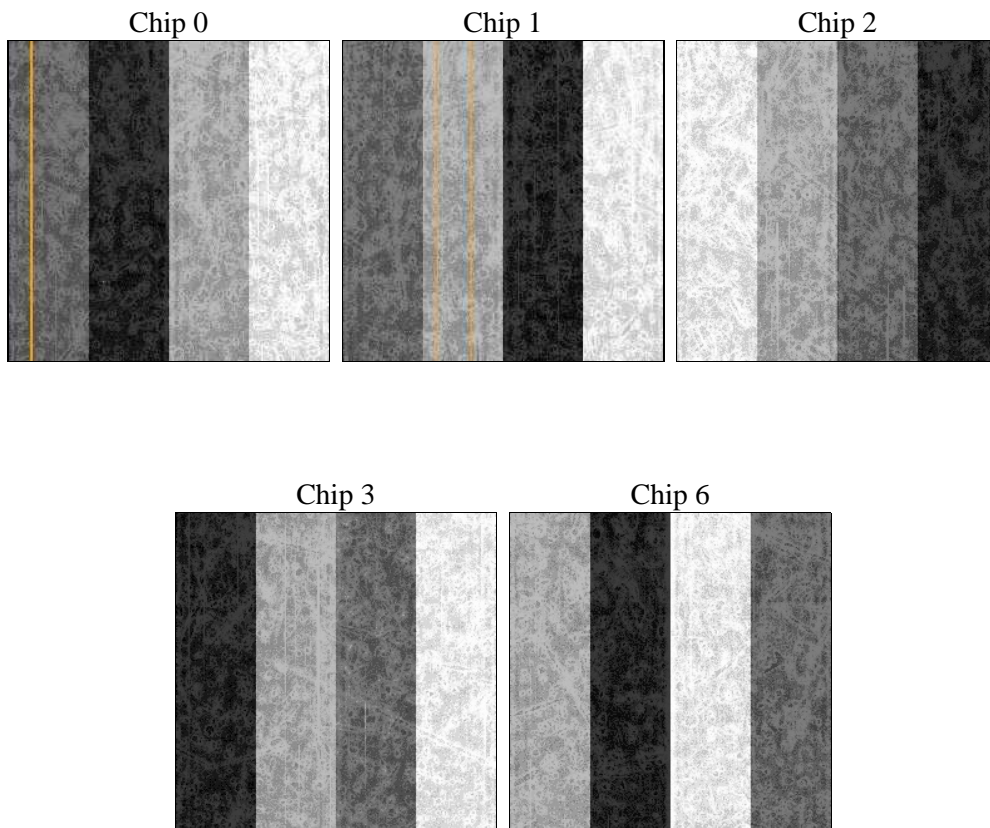
## 2 OBI

### 2.1 OBI

#### 2.1.1 Images



#### 2.1.2 Bias



### 2.1.3 Parameters

obi_num	0	Obi number	sched_exp_time	8871.000000	[s] Scheduled observation exposure time
ascdsver	8.4.4	Processing system revision	ontime	9052.0000696182	Sum of GTIs [s]
caldsver	4.4.9	&#160	ontime0	9052.0000696182	Sum of GTIs [s]
date	2012-05-19T01:48:48	Date and time of file creation	ontime1	9048.8590792418	Sum of GTIs [s]
revision	2	Processing version of data	ontime2	9048.8590593934	Sum of GTIs [s]
			ontime3	9052.0000696182	Sum of GTIs [s]
			ontime6	9052.0000696182	Sum of GTIs [s]
			l1events	387721	Number of level 1 events

### 2.1.4 Events

	ccd 0	ccd 1	ccd 2	ccd 3	ccd 6
level 1 events	73774	72514	83297	77852	80284
rejected events	66160	64238	76044	70763	72584
rejected %	89%	88%	91%	90%	90%

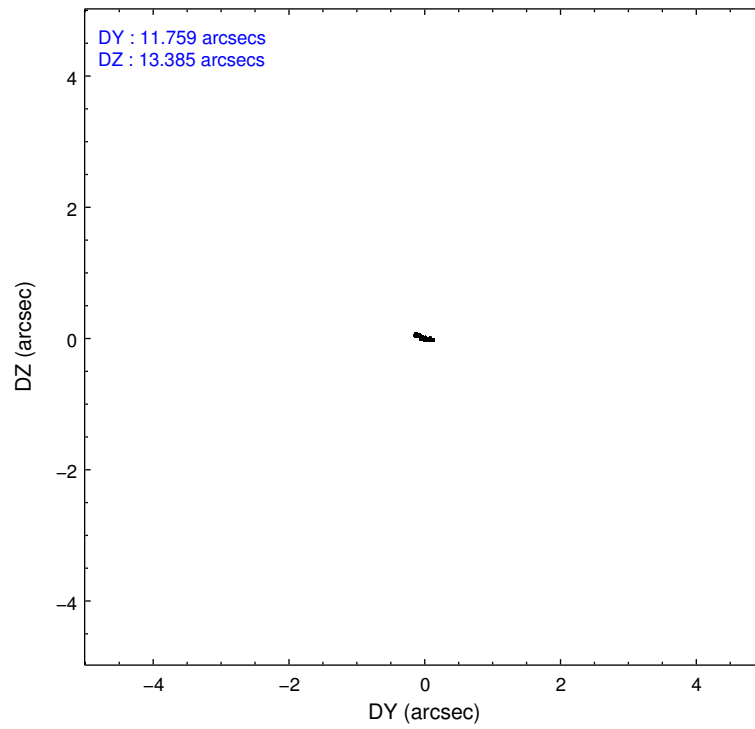
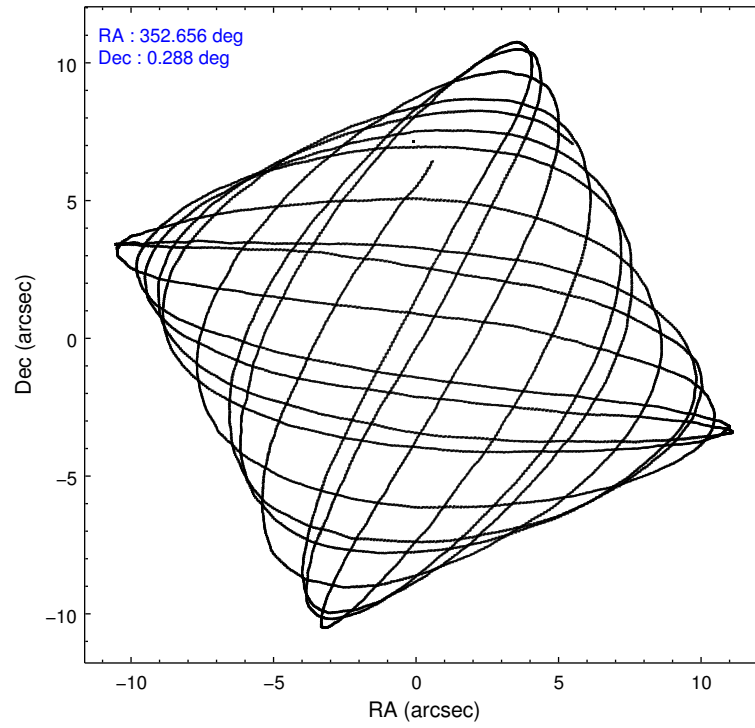
	ccd 0	ccd 1	ccd 2	ccd 3	ccd 6
grade 0 events	2751	3119	2702	2552	2720
	3%	4%	3%	3%	3%
grade 1 events	47	26	47	49	32
	0%	0%	0%	0%	0%
grade 2 events	1895	1929	1784	1660	1803
	2%	2%	2%	2%	2%
grade 3 events	909	946	789	821	841
	1%	1%	0%	1%	1%
grade 4 events	807	906	767	828	889
	1%	1%	0%	1%	1%
grade 5 events	2750	3109	2620	3213	3155
	3%	4%	3%	4%	3%
grade 6 events	1542	1713	1436	1509	1724
	2%	2%	1%	1%	2%
grade 7 events	63073	60766	73152	67220	69120
	85%	83%	87%	86%	86%

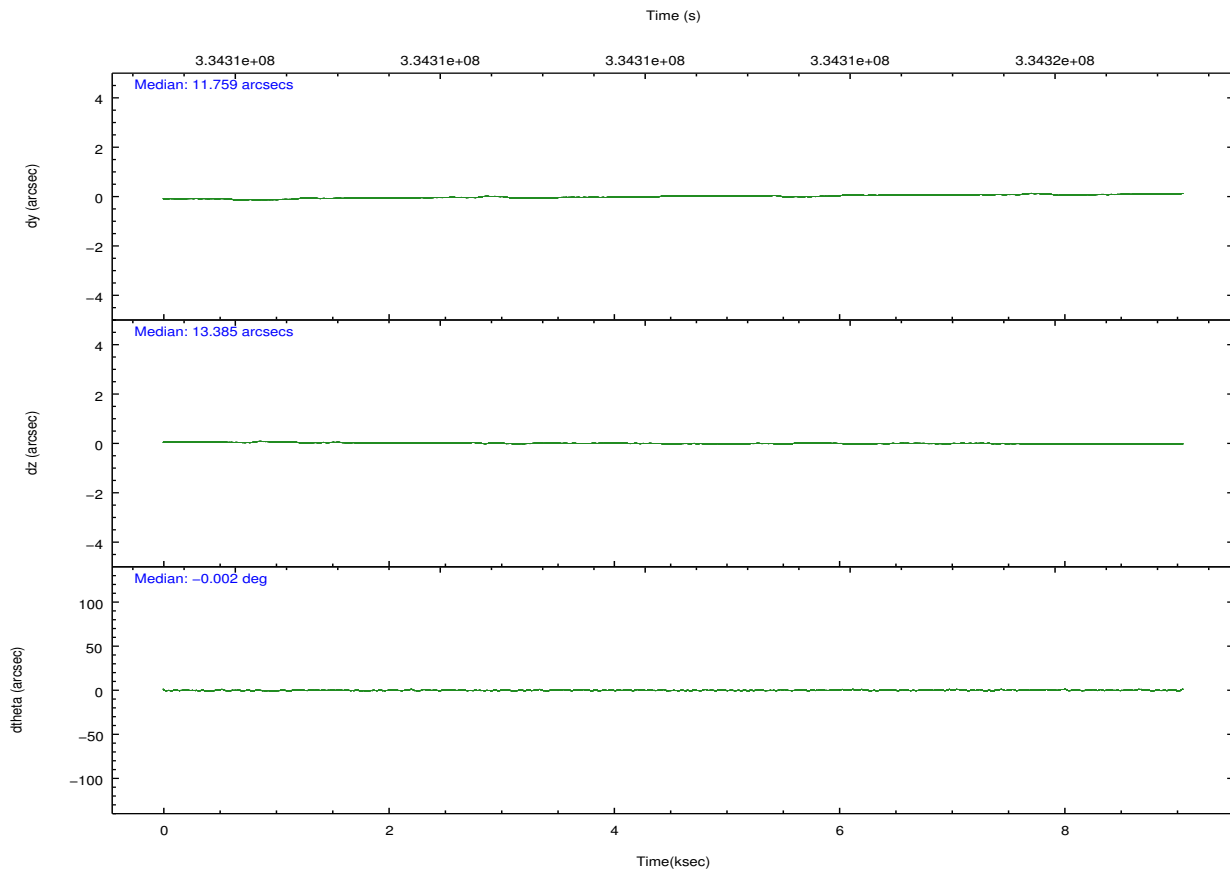
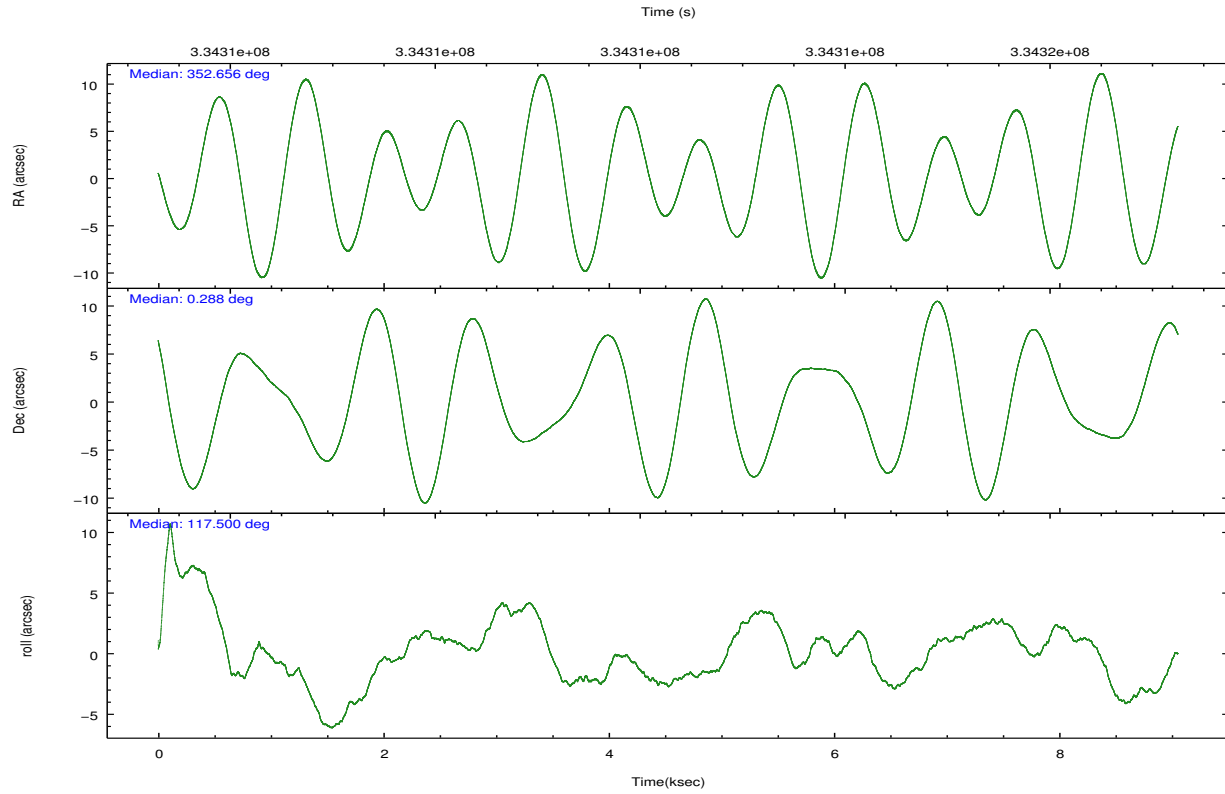


## 2.2 Compared Parameters

Parameter	Planned	Actual	Parameter	Planned	Actual
Instrument	ACIS	ACIS	Obspar format version number	7	7
Detector	ACIS-01236	ACIS-01236	Obspar file type	PREDICTED	ACTUAL
Grating	NONE	NONE	Obspar update status	NONE	UPDATED
Data mode	VFAINT	VFAINT	CCD I0 on	Y	Y
Observation mode	POINTING	POINTING	CCD I1 on	Y	Y
[deg] Pointing RA	352.679278	352.6559796037858	CCD I2 on	Y	Y
[deg] Pointing Dec	0.272895	0.2875657593656894	CCD I3 on	Y	Y
[deg] Pointing Roll	117.299920	117.5087179577034	CCD S0 on	N	N
[mm] SIM focus pos	-0.782348	-0.7809083437167272	CCD S1 on	N	N
[mm] SIM defocus	0	0.001439871863259334	CCD S2 on	O1	Y
[mm] SIM translation stage pos	-233.592463	-233.5874344608287	CCD S3 on	N	N
[mm] SIM translation stage offset	0	-0.005018542100998502	CCD S4 on	N	N
[s] Observation start time (MET)	334307921.184000	334307545.11745	CCD S5 on	N	N
Observation start date	2008-08-05T07:17:36	2008-08-05T07:12:25	Number of optional ACIS chips dropped	0	0
[s] Observation end time (MET)	334316792.184000	334316926.43041	On-chip summing requested	N	N
Observation end date	2008-08-05T09:45:27	2008-08-05T09:48:46	Subarray requested	NONE	NONE
Read mode	TIMED	TIMED	Alternating exposures requested	N	N
			[s] Primary exposure time	0.000000	3.1

## 2.3 Aspect



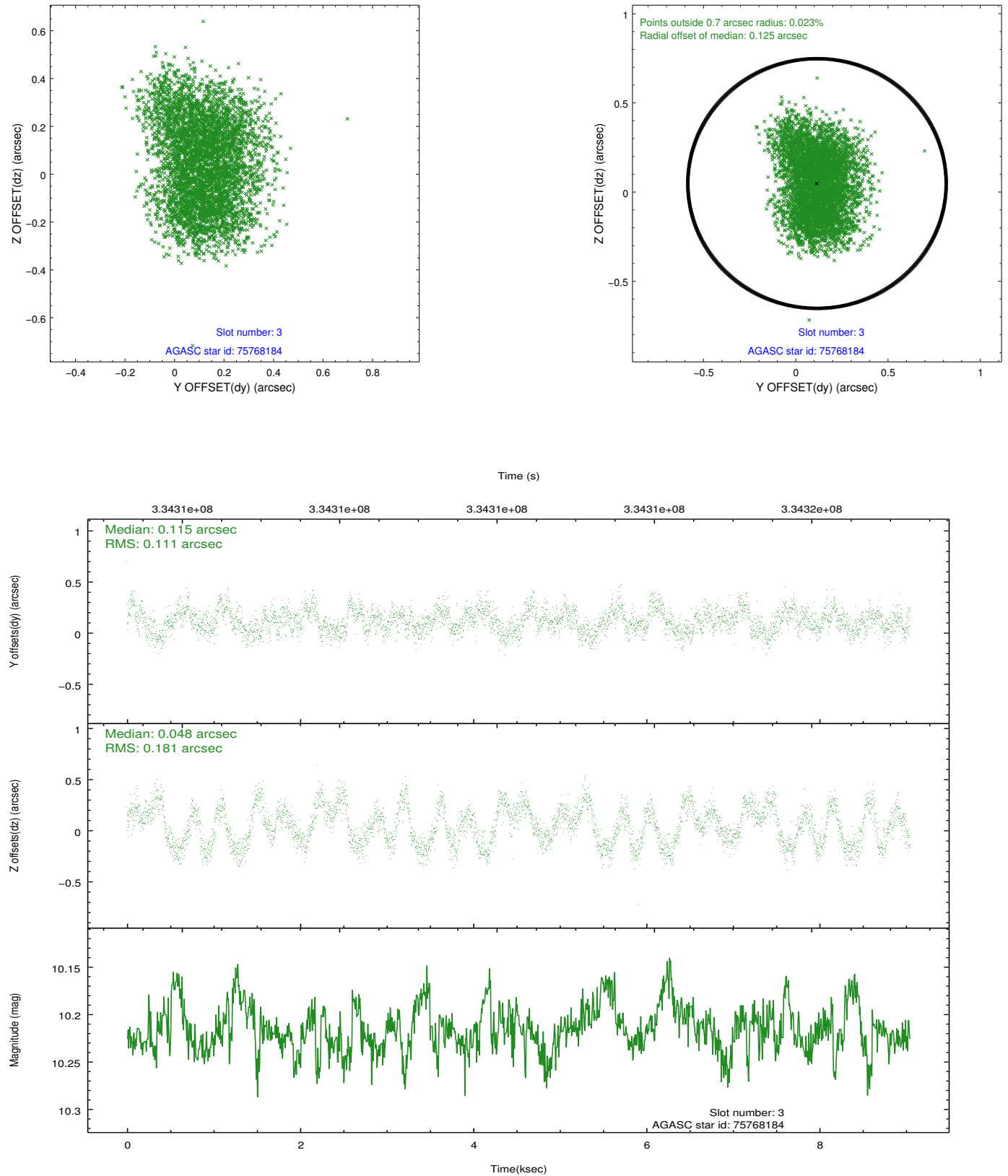


### Slot Statistics

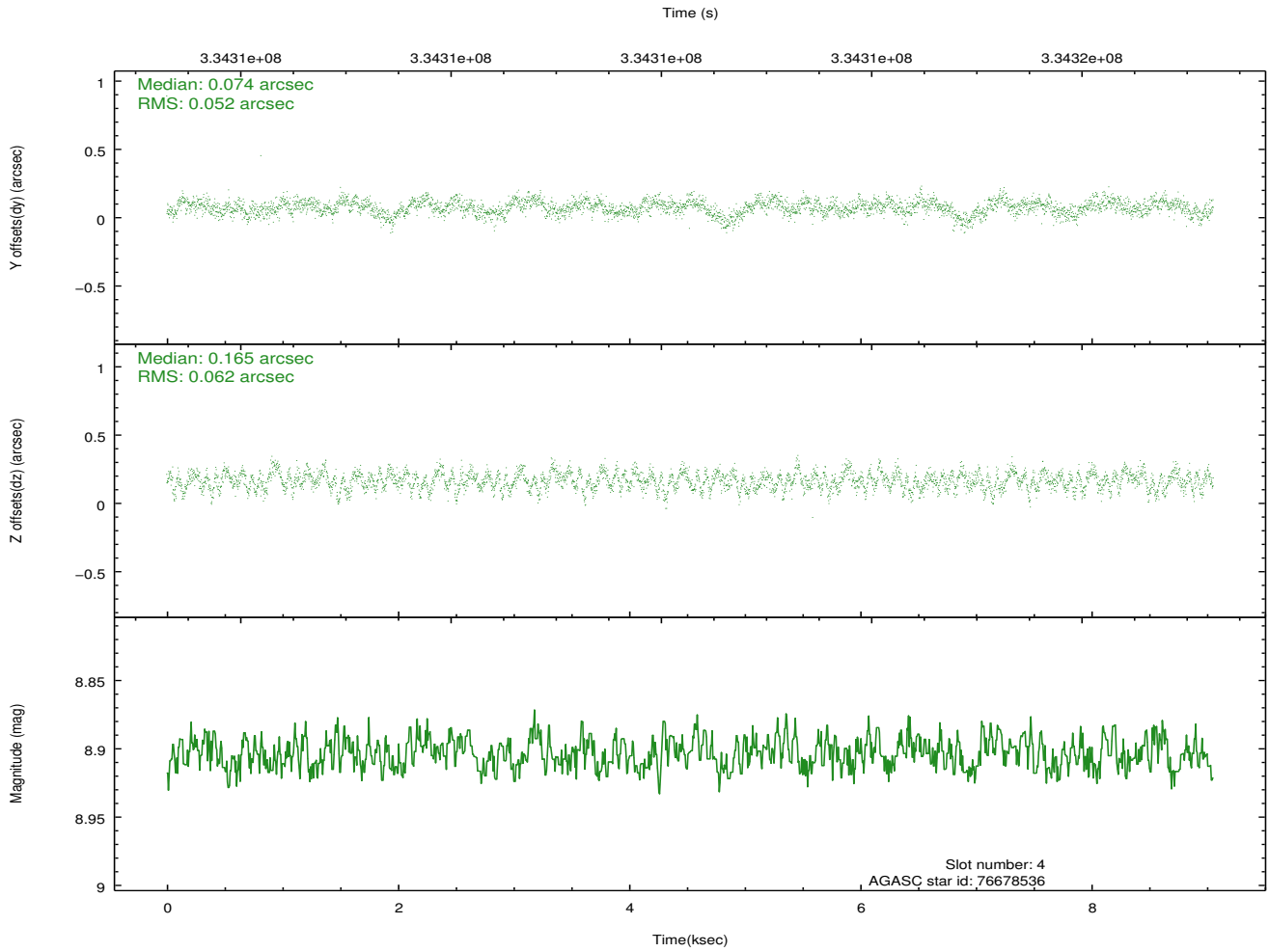
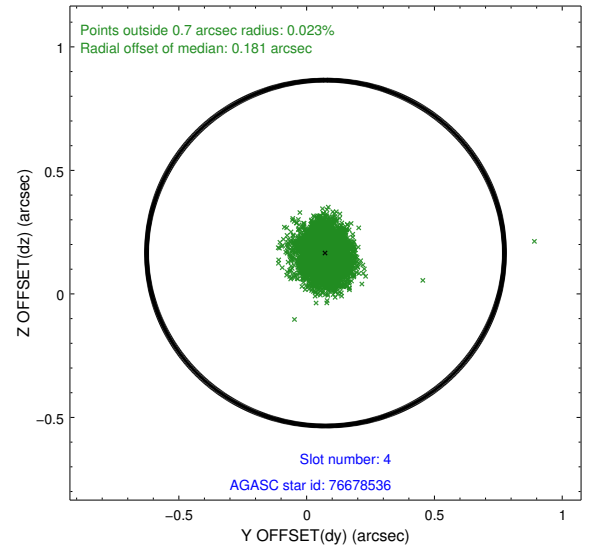
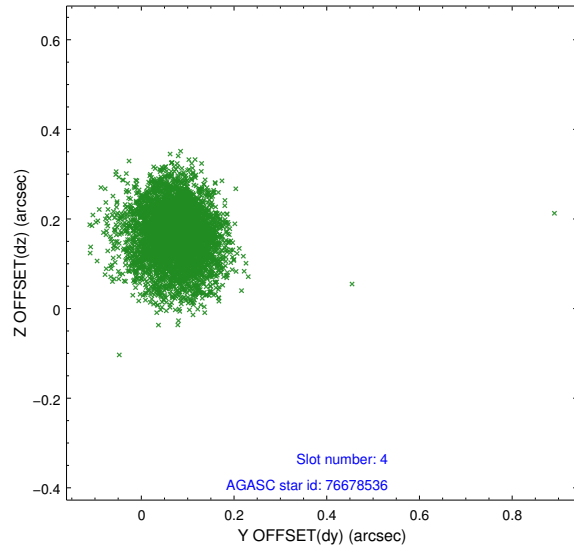
slot	status	id	mag	n_pts	med_dy	med_dz	dr1	dr2	ra	dec	mean_y	mean_z
0	FID	ACIS-I-1	7.02	2209	0.017	0.028	0.006	0.011	0.000000	0.000000	927.81	-836.92
1	FID	ACIS-I-5	7.02	2209	-0.166	0.041	0.006	0.010	0.000000	0.000000	-1820.15	1060.27
2	FID	ACIS-I-6	7.02	2209	0.057	0.003	0.007	0.011	0.000000	0.000000	392.73	1705.43
3	GUIDE	75768184	10.22	4404	0.115	0.048	0.234	0.352	352.363704	0.298036	601.35	968.13
4	GUIDE	76678536	8.90	4417	0.074	0.165	0.085	0.138	353.237558	0.180446	-1217.04	-1633.21
5	GUIDE	76685264	9.68	4410	-0.053	0.060	0.239	0.378	353.301878	0.237362	-1141.49	-1933.46
6	GUIDE	687347656	9.58	4414	-0.118	-0.222	0.156	0.248	352.228641	-0.041094	-260.86	1959.66
7	GUIDE	688265896	9.16	4414	-0.004	-0.048	0.092	0.149	352.587516	-0.177872	-1290.72	1038.06

## 2.4 Star Slots

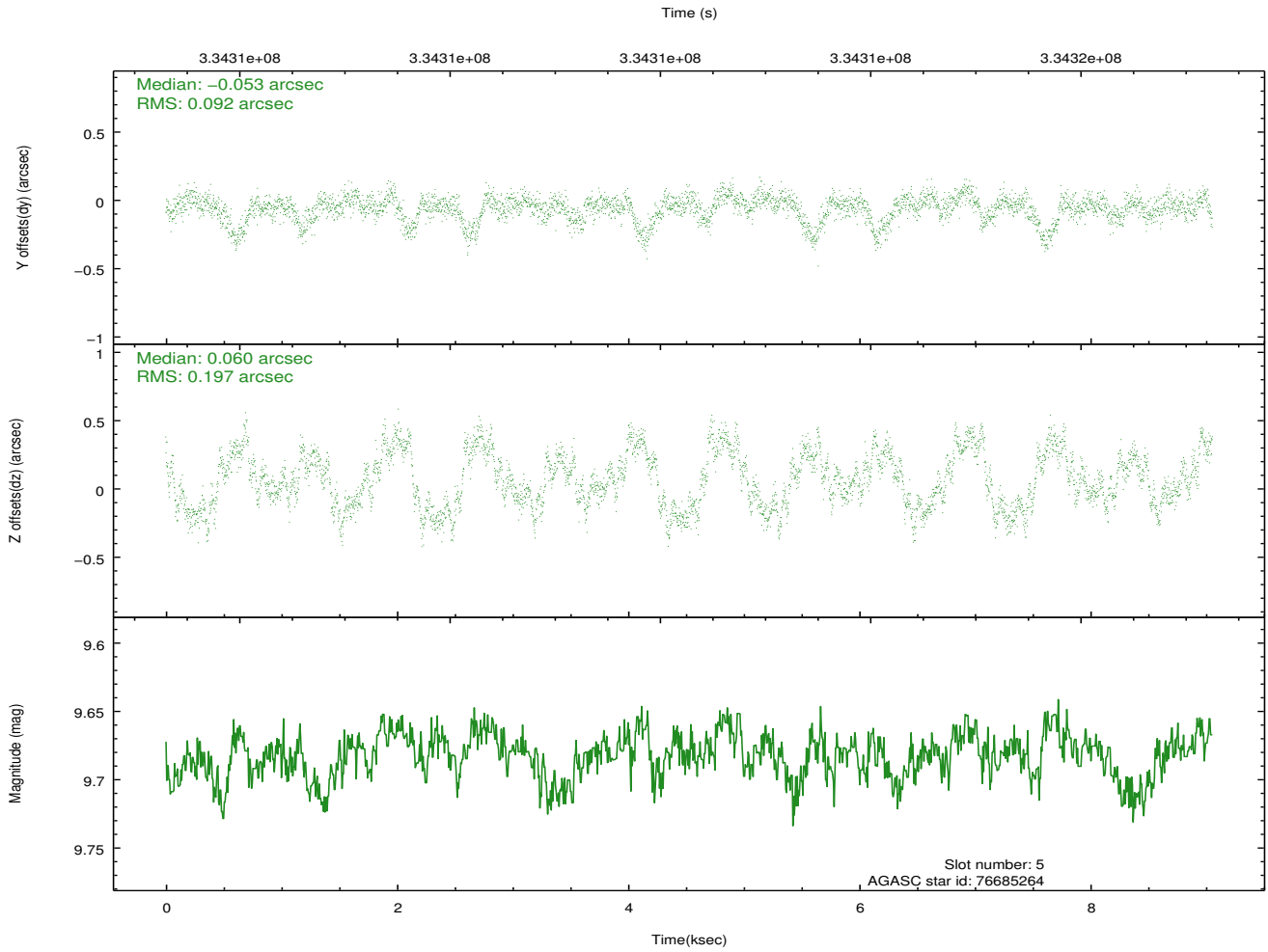
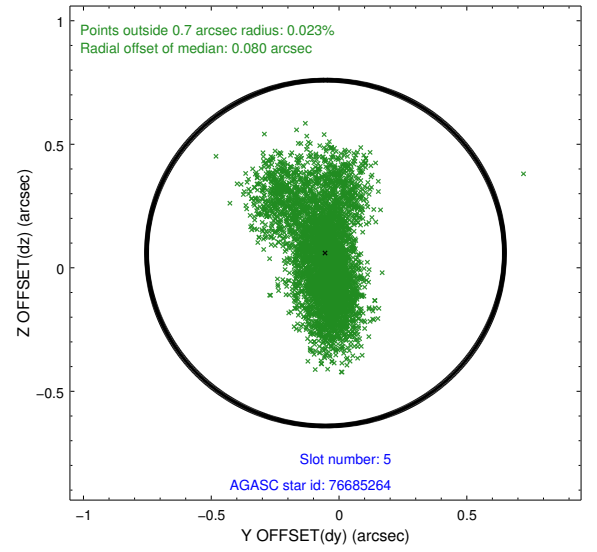
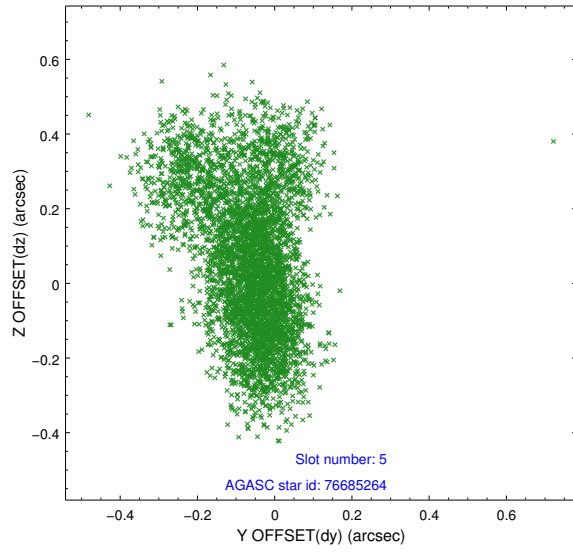
### 2.4.1 Slot 3



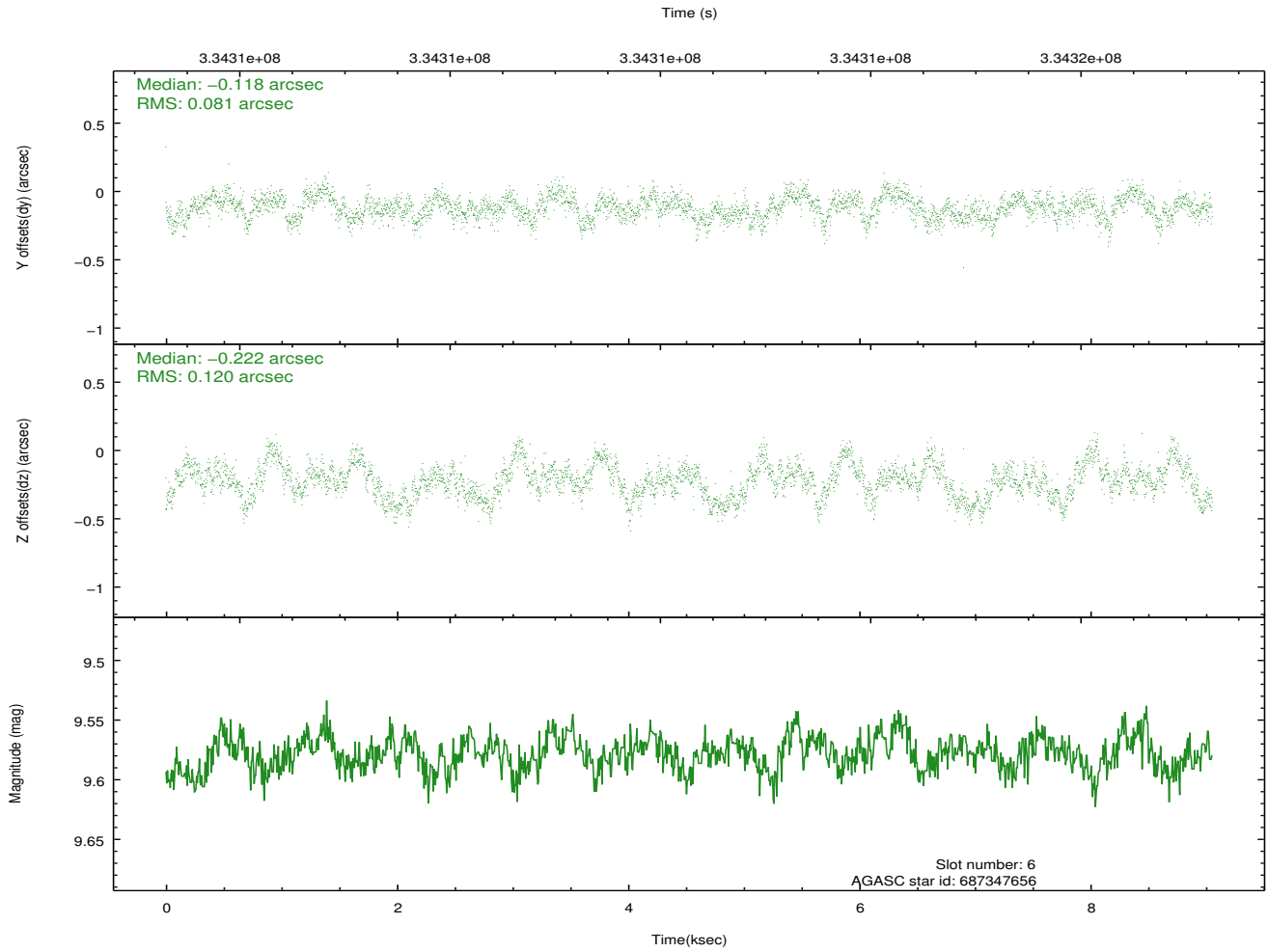
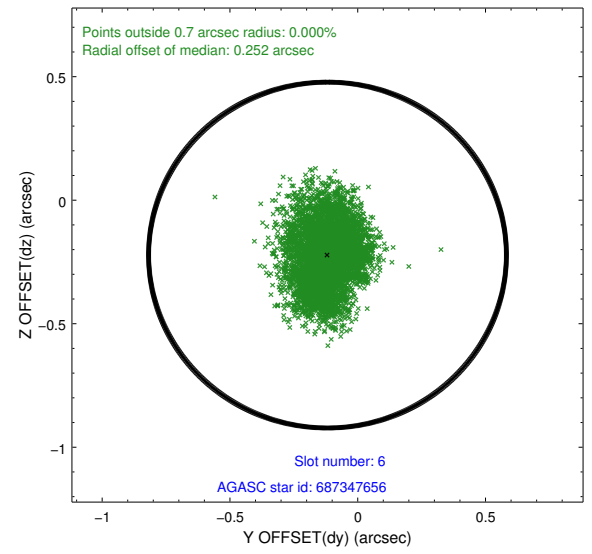
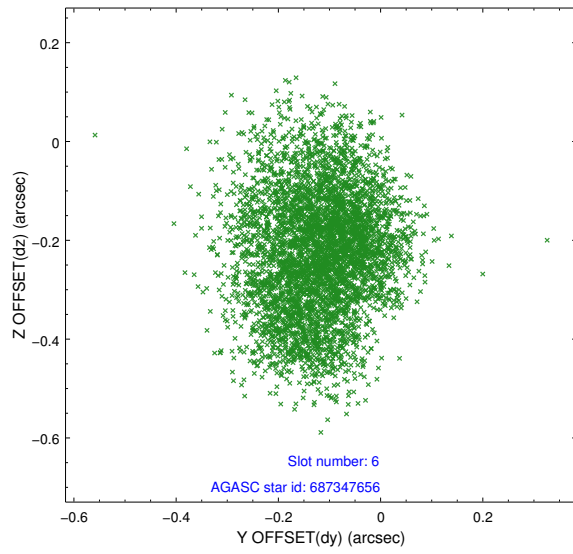
## 2.4.2 Slot 4



### 2.4.3 Slot 5

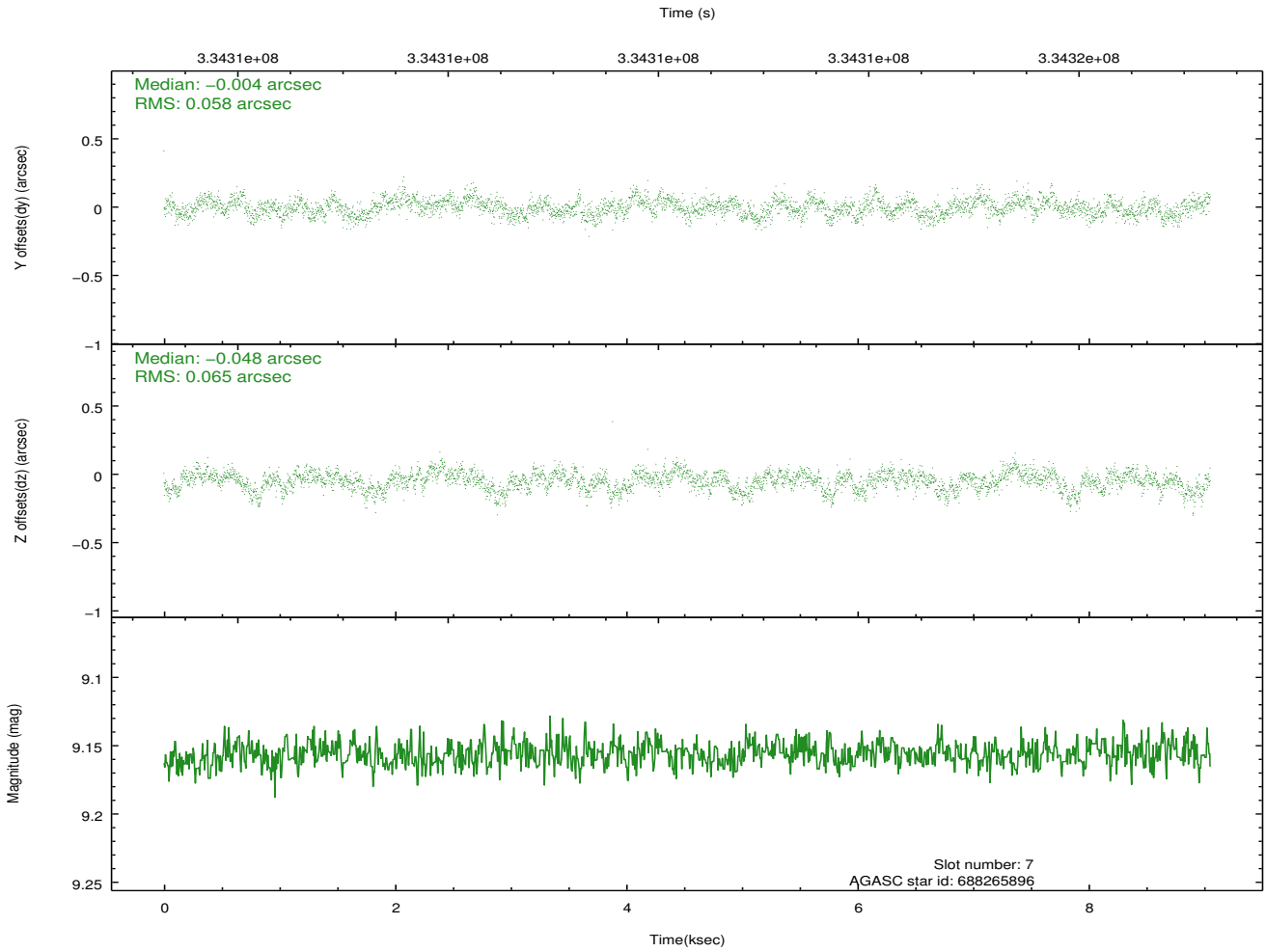
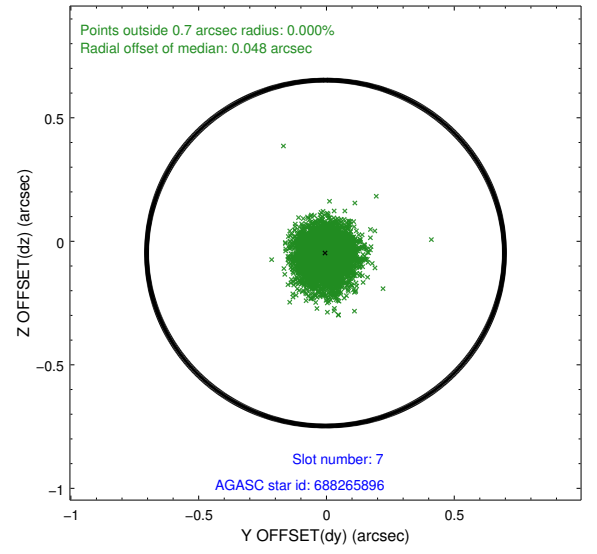
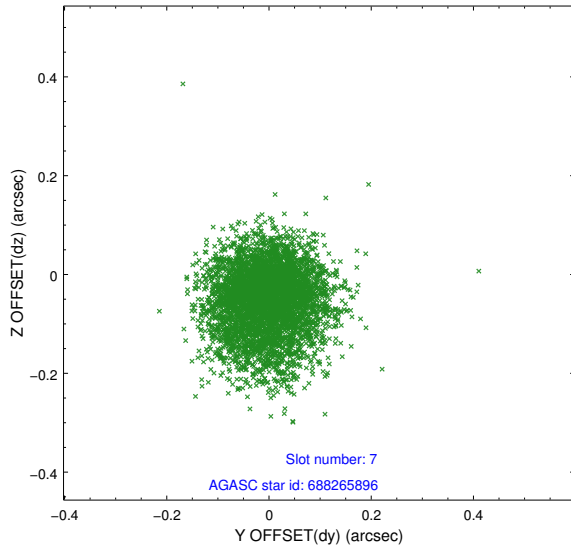


## 2.4.4 Slot 6



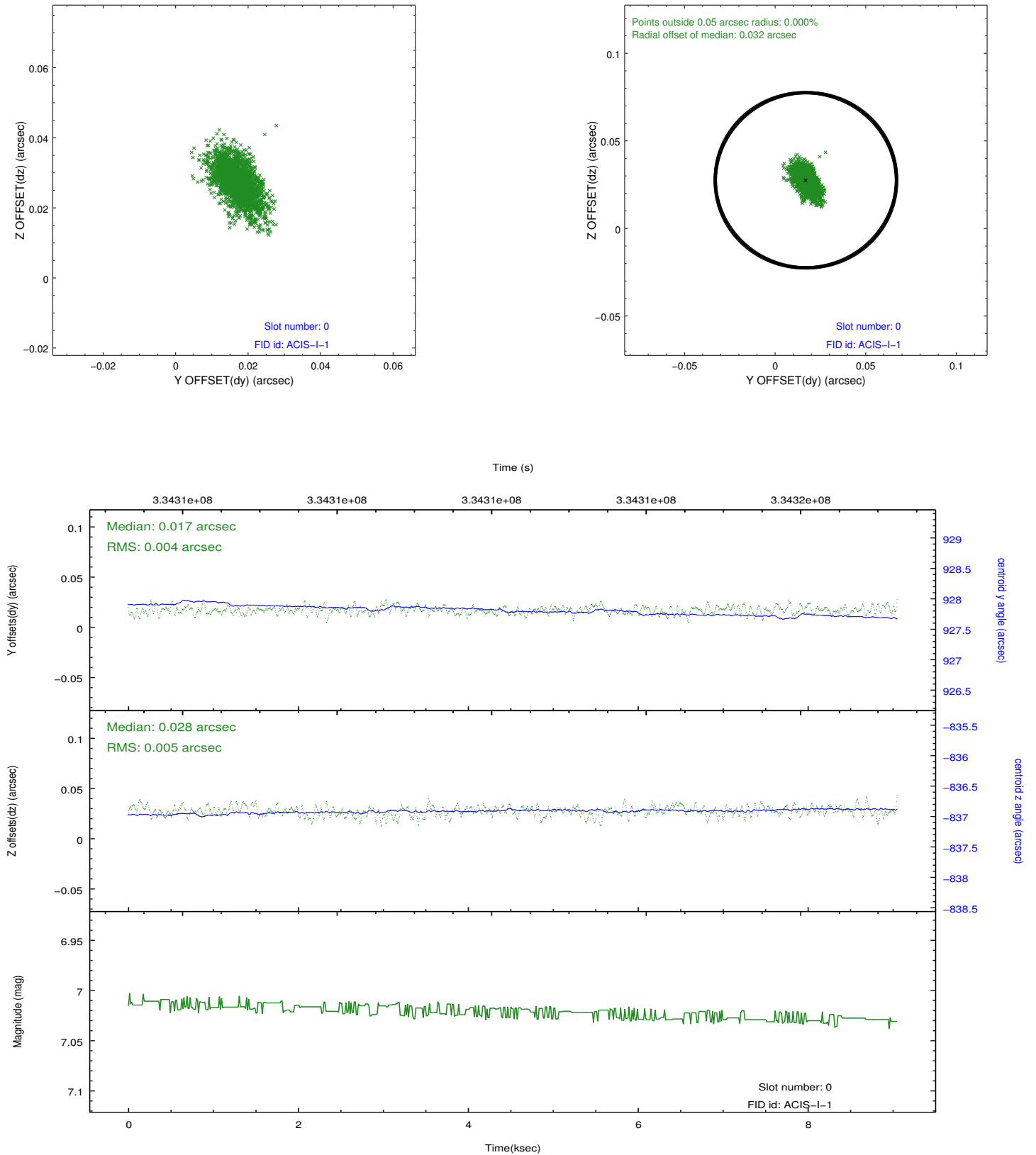


## 2.4.5 Slot 7

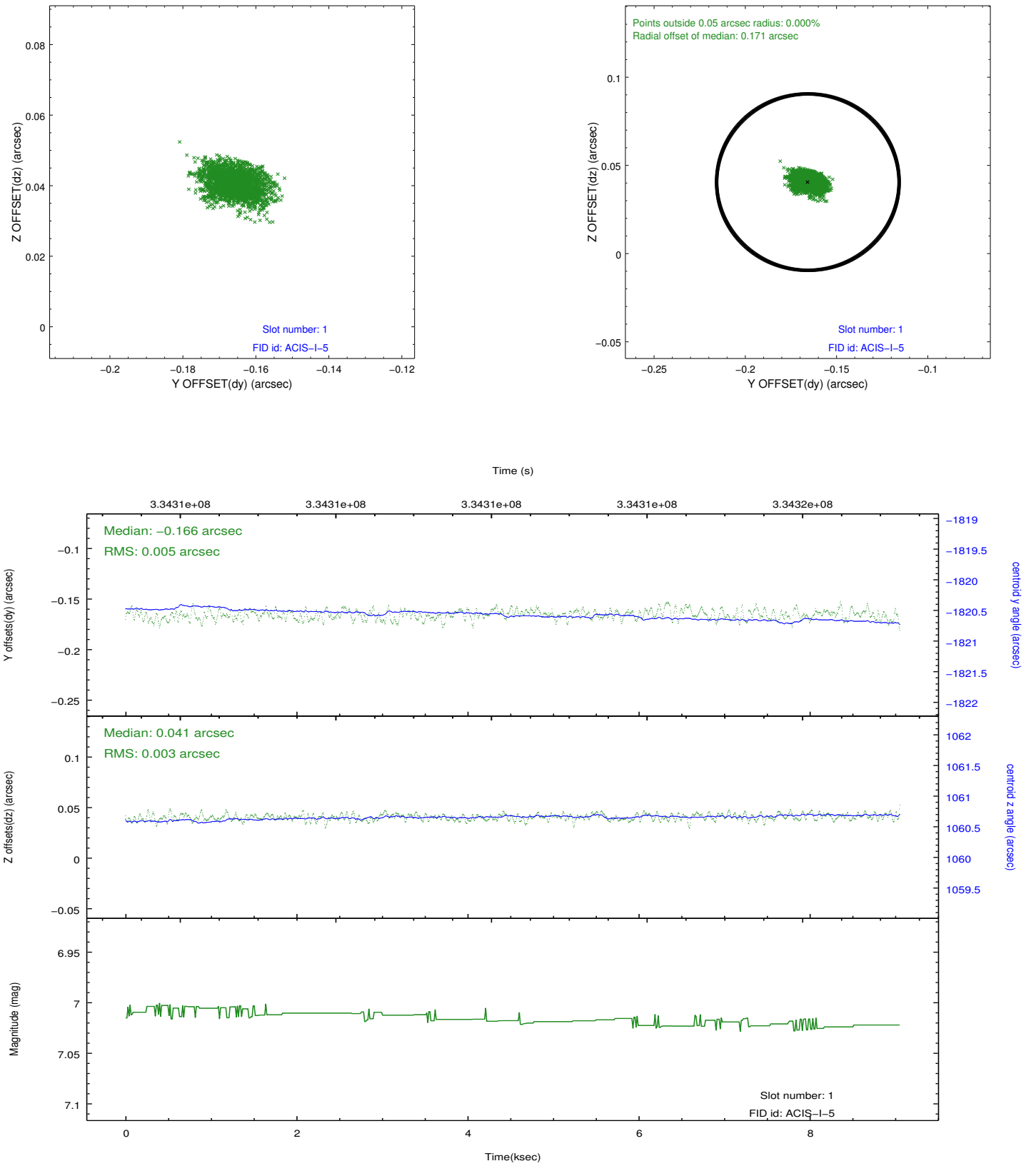


## 2.5 FID Slots

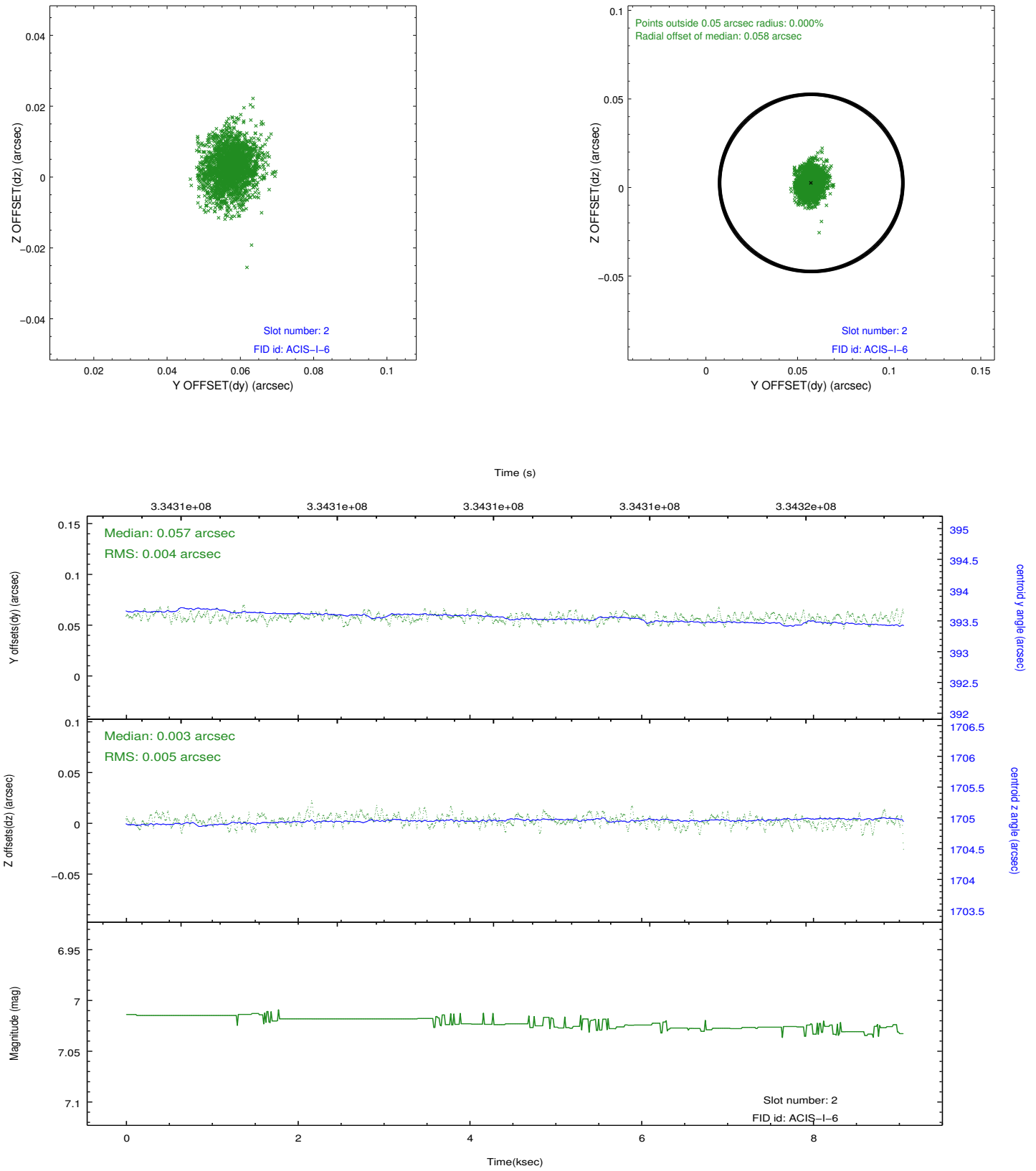
### 2.5.1 Slot 0



## 2.5.2 Slot 1



### 2.5.3 Slot 2



## A Summary

### A.1 Status

V&V Scientist	Beth Sundheim
V&V Date (YYYY-MM-DD)	2012.05.27
V&V Edition	1
V&V Disposition and Status	OK
V&V Charge Time	9.05200006

### A.2 Comments