

V&V Reference Report

L2 ASCDS Version : 8.4.4

Observation 7782 - L2 Version 2
Chandra X-Ray Center

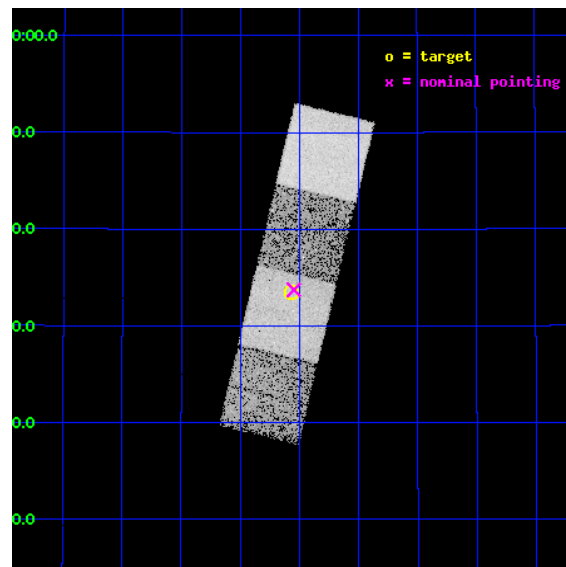
L2 Processing Date : May 10 2012

Contents

1	Front	2
2	OBI	3
2.1	OBI	3
2.1.1	Images	3
2.1.2	Bias	3
2.1.3	Parameters	4
2.1.4	Events	4
2.2	Compared Parameters	5
2.3	Aspect	6
2.4	Star Slots	9
2.4.1	Slot 3	9
2.4.2	Slot 4	10
2.4.3	Slot 5	11
2.4.4	Slot 6	12
2.4.5	Slot 7	13
2.5	FID Slots	14
2.5.1	Slot 0	14
2.5.2	Slot 1	15
2.5.3	Slot 2	16
A	Summary	17
A.1	Status	17
A.2	Comments	17

1 Front

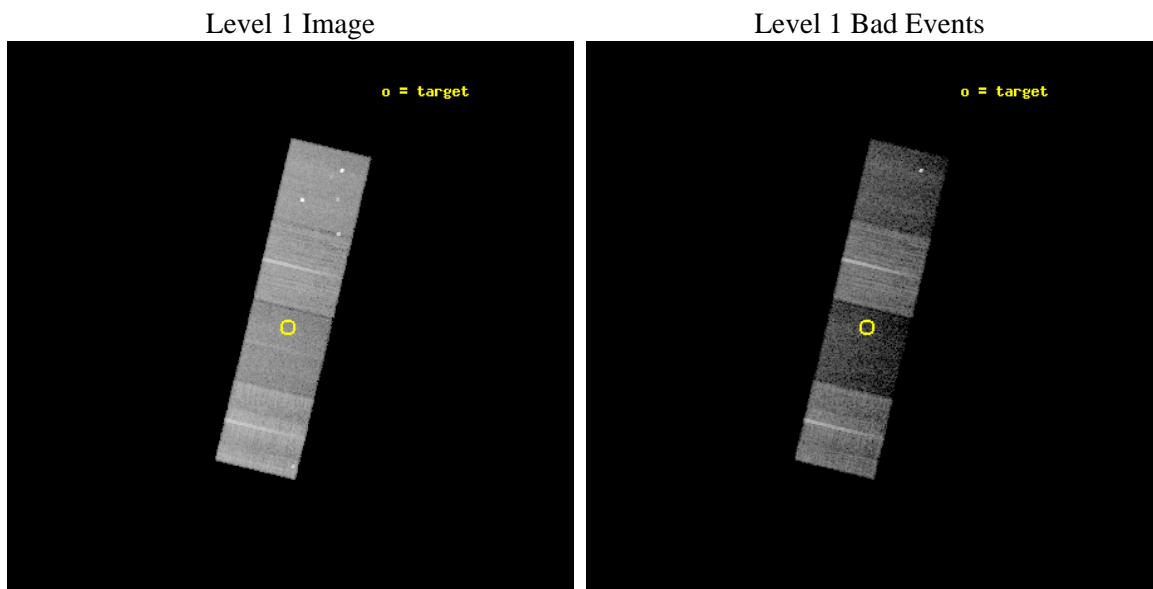
seq_num	701450	Sequence number
obs_id	7782	Observation id
title	An Exploratory Chandra Survey of Weak-Line Quasars from the Sloan Digital Sky Survey	Proposal title
observer	Prof. William Brandt	Principal investigator
object	SDSS J1421+3433	Source name
dtcycle	0	
cycle	P	events from which exps? Prim/Second/Both
ra_targ	215.265833	Observer's specified target RA [deg]
dec_targ	34.558889	Observer's specified target Dec [deg]
ra_nom	215.26168044347	Nominal RA [deg]
dec_nom	34.562315757106	Nominal Dec [deg]
roll_nom	103.41150646842	Nominal Roll [deg]
revision	2	Processing version of data
ontime	12964.200099707	Sum of GTIs [s]
livetime	12794.813281299	Livetime [s]
ontime5	12964.200099707	Sum of GTIs [s]
ontime6	12964.200099707	Sum of GTIs [s]
ontime7	12964.200099707	Sum of GTIs [s]
ontime8	12964.200099707	Sum of GTIs [s]
l2events	85270	Number of level 2 events



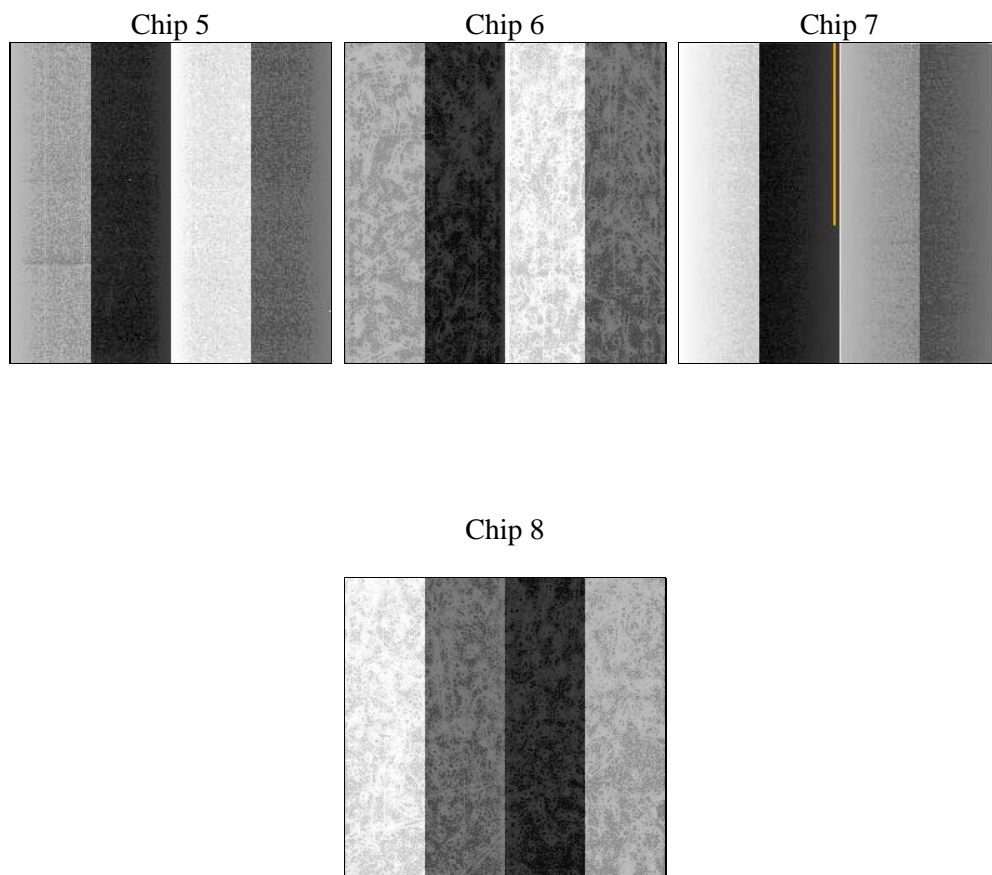
2 OBI

2.1 OBI

2.1.1 Images



2.1.2 Bias



2.1.3 Parameters

obi_num	0	Obi number	sched_exp_time	12800.000000	[s] Scheduled observation exposure time
ascdsver	8.4.4	Processing system revision	ontime	12964.200099707	Sum of GTIs [s]
caldsver	4.4.9	 	ontime5	12964.200099707	Sum of GTIs [s]
date	2012-05-10T09:07:44	Date and time of file creation	ontime6	12964.200099707	Sum of GTIs [s]
revision	2	Processing version of data	ontime7	12964.200099707	Sum of GTIs [s]
			ontime8	12964.200099707	Sum of GTIs [s]
			l1events	334540	Number of level 1 events

2.1.4 Events

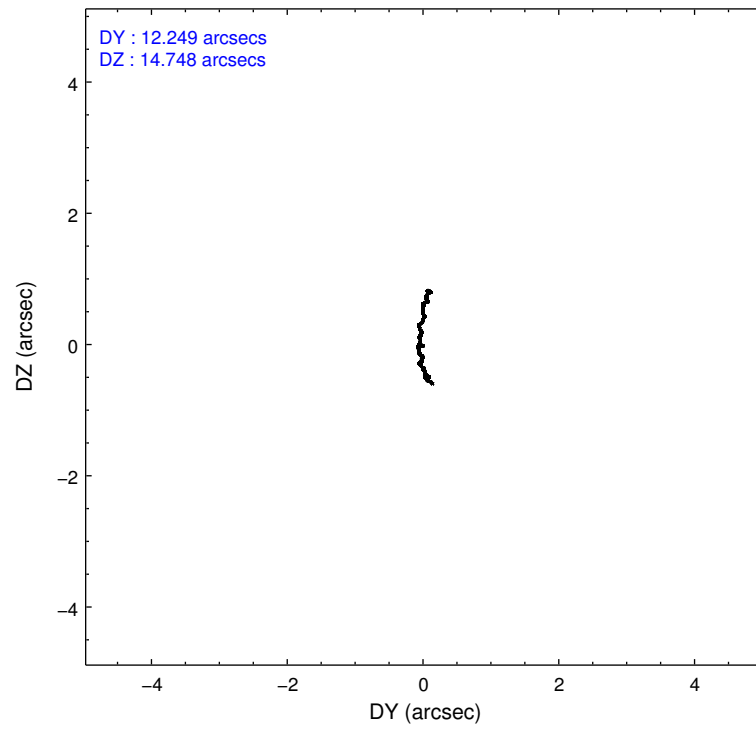
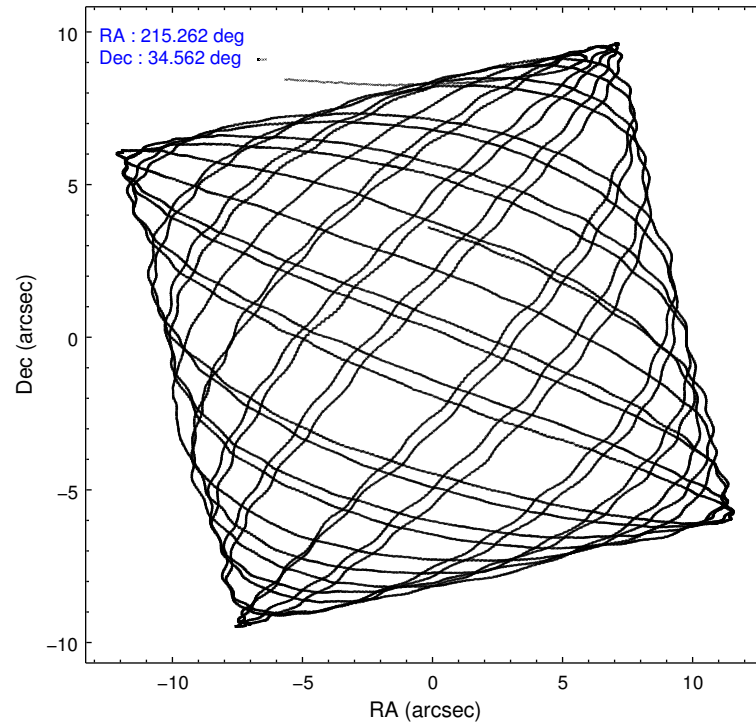
	ccd 5	ccd 6	ccd 7	ccd 8
level 1 events	85050	88747	51653	109090
rejected events	33762	80637	22417	80551
rejected %	39%	90%	43%	73%

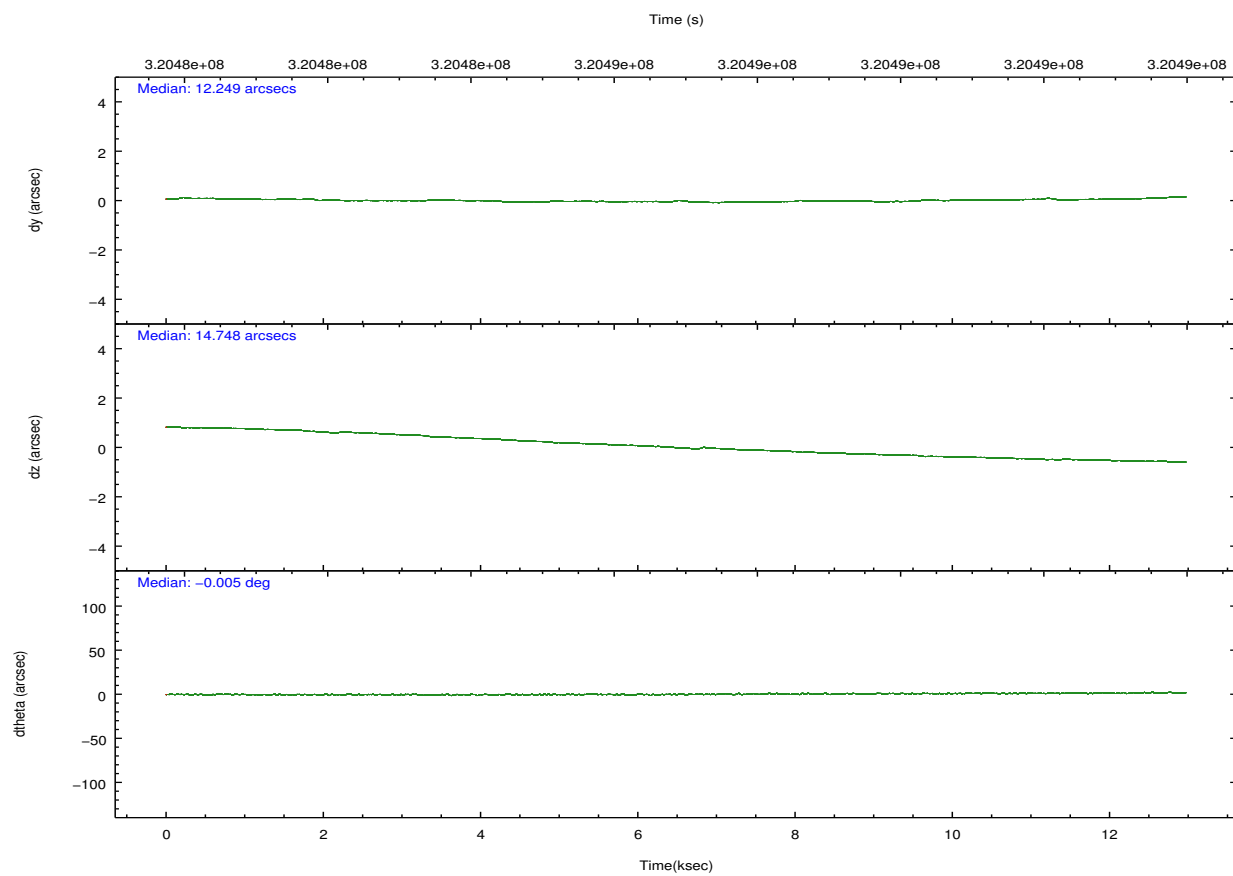
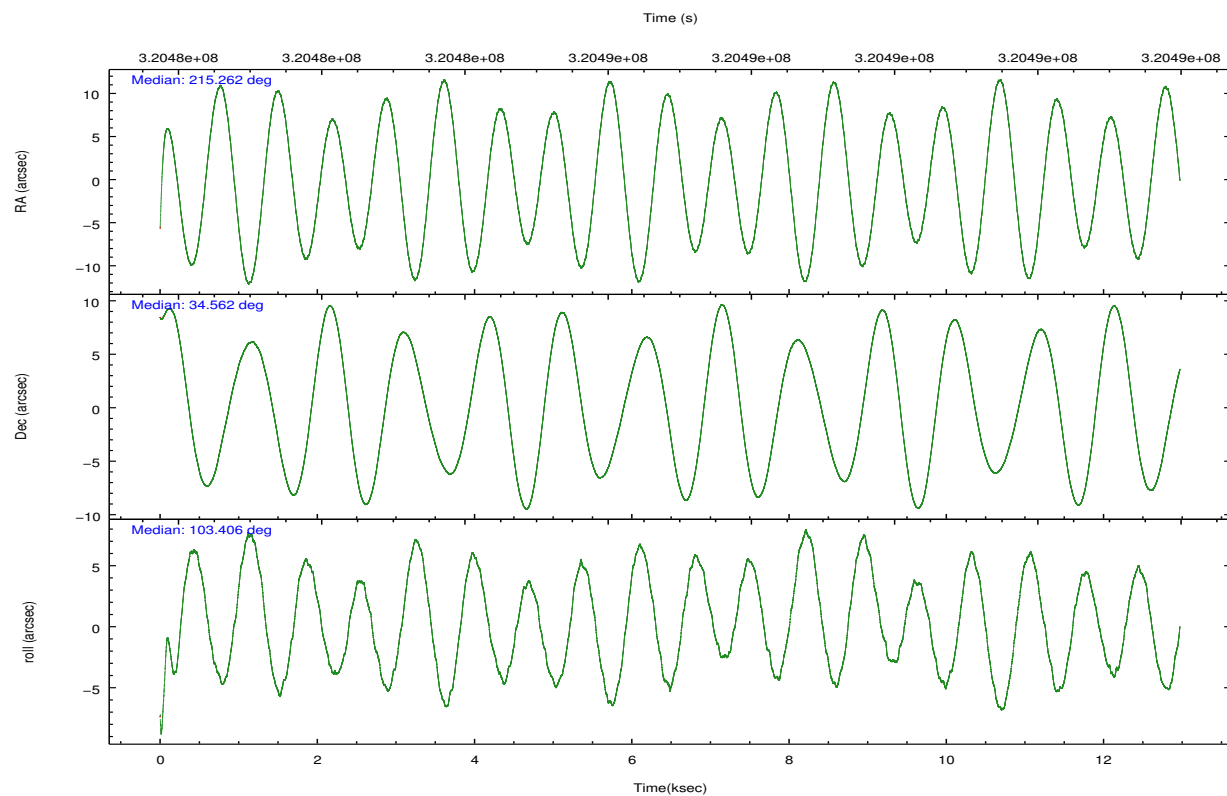
	ccd 5	ccd 6	ccd 7	ccd 8
grade 0 events	9464	3416	3935	8859
	11%	3%	7%	8%
grade 1 events	273	44	114	94
	0%	0%	0%	0%
grade 2 events	17157	1791	7287	6741
	20%	2%	14%	6%
grade 3 events	2469	882	3052	2946
	2%	0%	5%	2%
grade 4 events	2371	859	2989	2809
	2%	0%	5%	2%
grade 5 events	6680	1810	5337	3108
	7%	2%	10%	2%
grade 6 events	21028	1338	12635	7819
	24%	1%	24%	7%
grade 7 events	25608	78607	16304	76714
	30%	88%	31%	70%

2.2 Compared Parameters

Parameter	Planned	Actual	Parameter	Planned	Actual
Instrument	ACIS	ACIS	Obspar format version number	7	7
Detector	ACIS-5678	ACIS-5678	Obspar file type	PREDICTED	ACTUAL
Grating	NONE	NONE	Obspar update status	NONE	UPDATED
Data mode	FAINT	FAINT	Number of optional ACIS chips dropped	0	0
Observation mode	POINTING	POINTING	On-chip summing requested	N	N
[deg] Pointing RA	215.284810	215.2616804434676	Subarray requested	NONE	NONE
[deg] Pointing Dec	34.542705	34.56231575710565	Alternating exposures requested	N	N
[deg] Pointing Roll	103.241780	103.4115064684178	[s] Primary exposure time	0.000000	3.1
[mm] SIM focus pos	-0.684267	-0.6828225247311905			
[mm] SIM defocus	0	0.001444936568705701			
[mm] SIM translation stage pos	-190.132523	-190.1425803651734			
[mm] SIM translation stage offset	0	0.01005778216563158			
[s] Observation start time (MET)	320480556.184000	320479481.61778			
Observation start date	2008-02-27T06:21:31	2008-02-27T06:04:41			
[s] Observation end time (MET)	320493356.184000	320493950.51848			
Observation end date	2008-02-27T09:54:51	2008-02-27T10:05:50			
Read mode	TIMED	TIMED			

2.3 Aspect



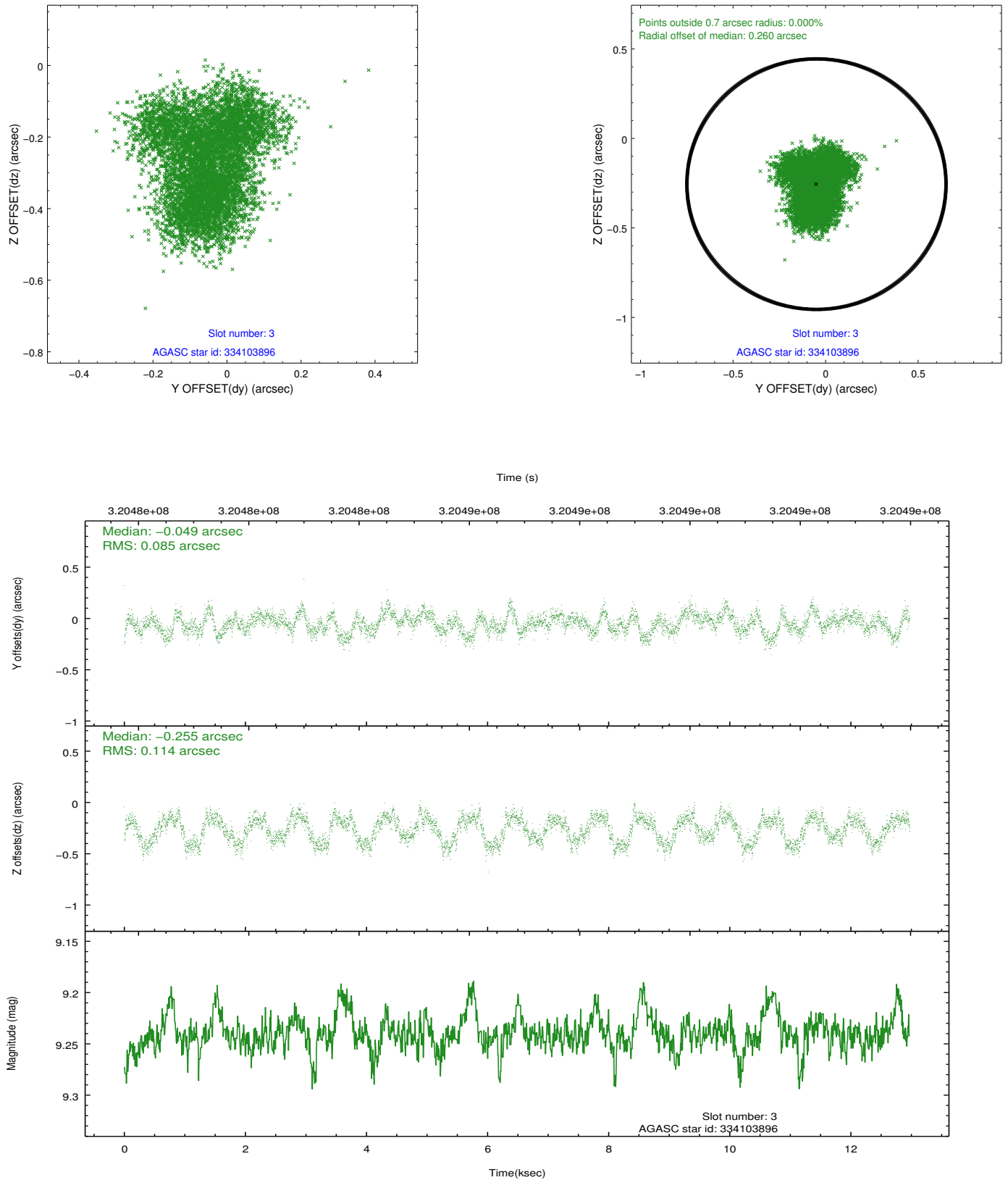


Slot Statistics

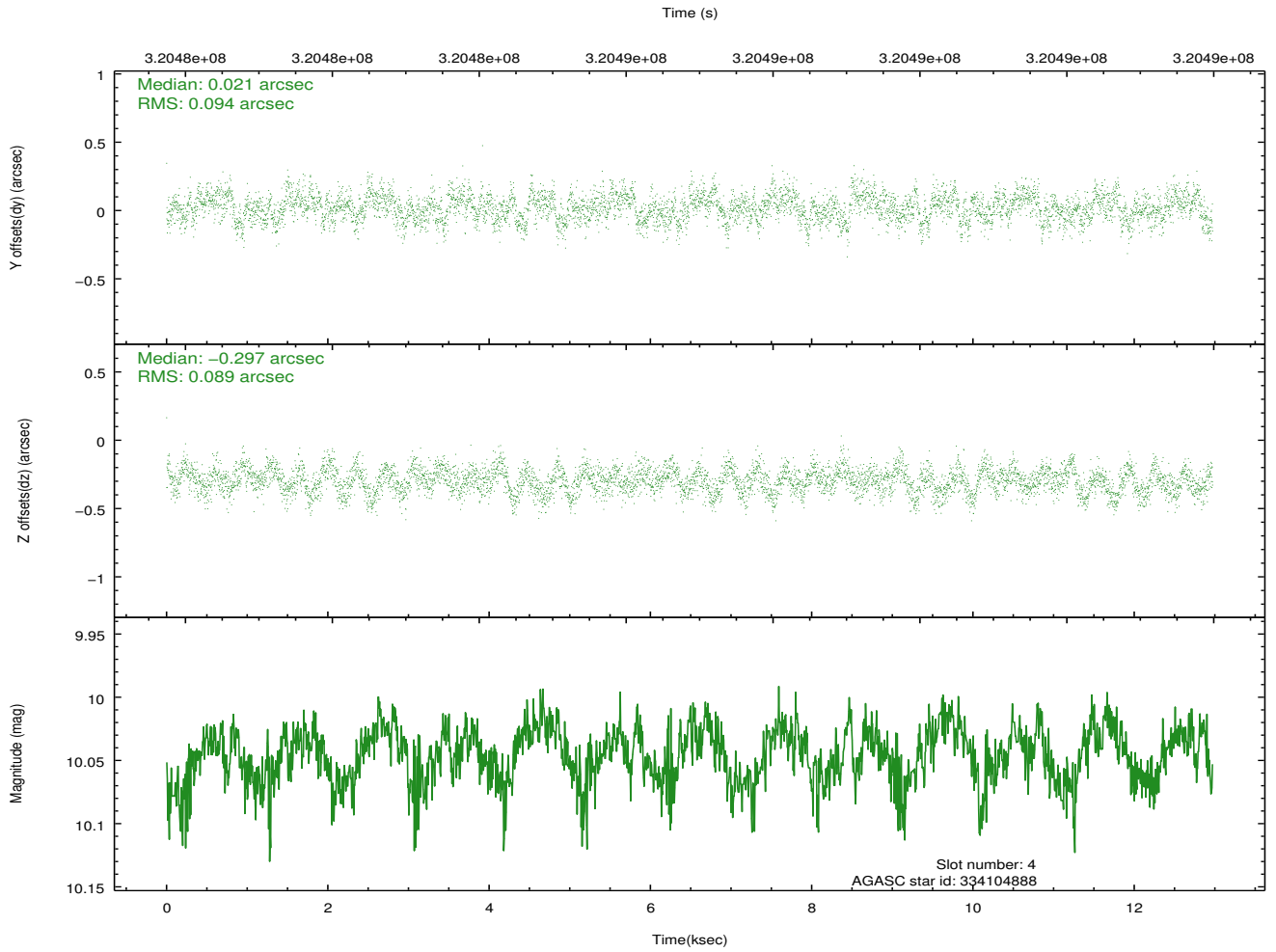
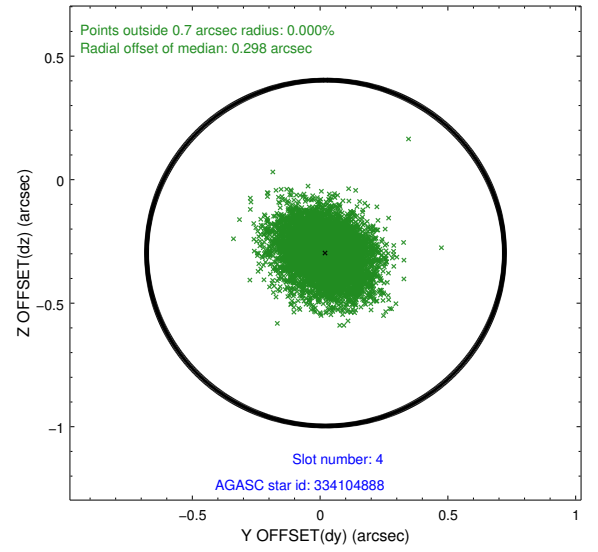
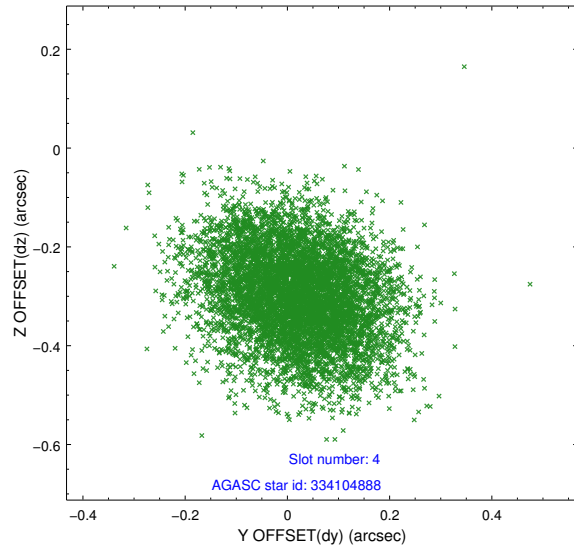
slot	status	id	mag	n_pts	med_dy	med_dz	dr1	dr2	ra	dec	mean_y	mean_z
0	FID	ACIS-S-2	7.09	3163	-0.048	-0.037	0.012	0.019	0.000000	0.000000	-765.17	-1736.18
1	FID	ACIS-S-4	7.19	3163	0.144	0.033	0.009	0.030	0.000000	0.000000	2148.10	172.03
2	FID	ACIS-S-5	7.23	3164	-0.126	0.013	0.010	0.017	0.000000	0.000000	-1817.64	166.05
3	GUIDE	334103896	9.24	6322	-0.049	-0.255	0.159	0.228	215.149512	34.721726	719.22	242.17
4	GUIDE	334104888	10.04	6321	0.021	-0.297	0.138	0.221	214.856013	34.872444	1448.20	960.77
5	GUIDE	334106424	10.02	6320	-0.211	-0.133	0.158	0.252	214.839711	33.823363	-2213.07	1888.64
6	GUIDE	334497312	9.82	6321	0.079	0.051	0.173	0.273	215.482164	35.047592	1636.49	-981.84
7	GUIDE	335021128	9.35	6322	0.165	0.632	0.121	0.195	216.159551	34.422539	-1004.43	-2431.24

2.4 Star Slots

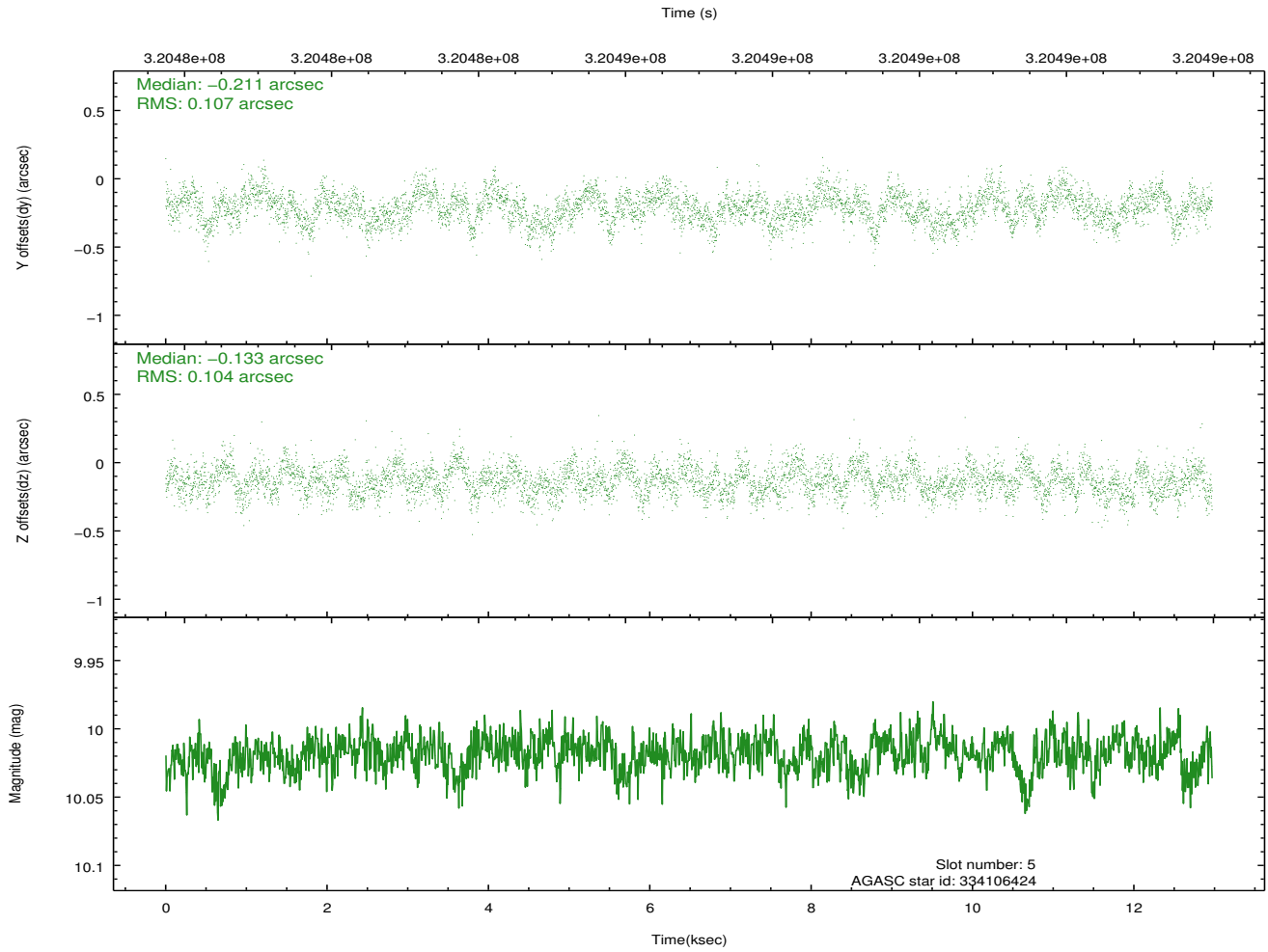
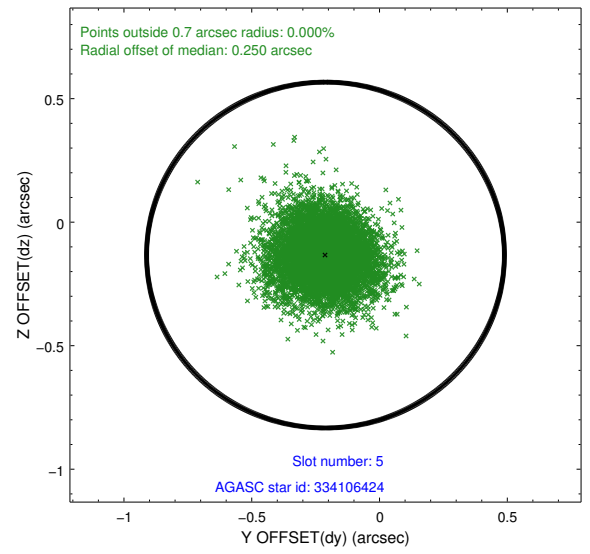
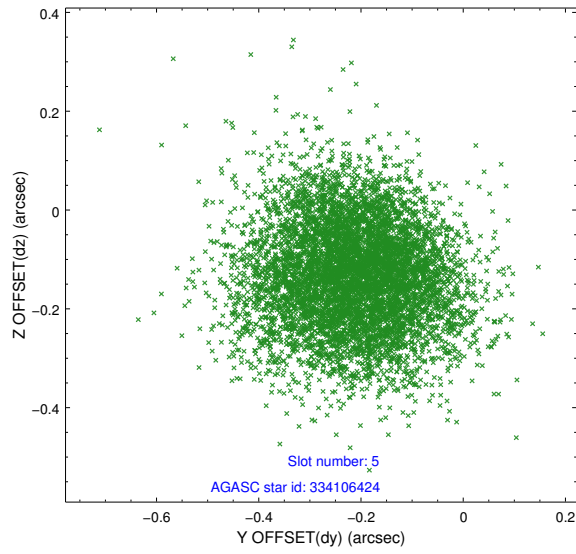
2.4.1 Slot 3



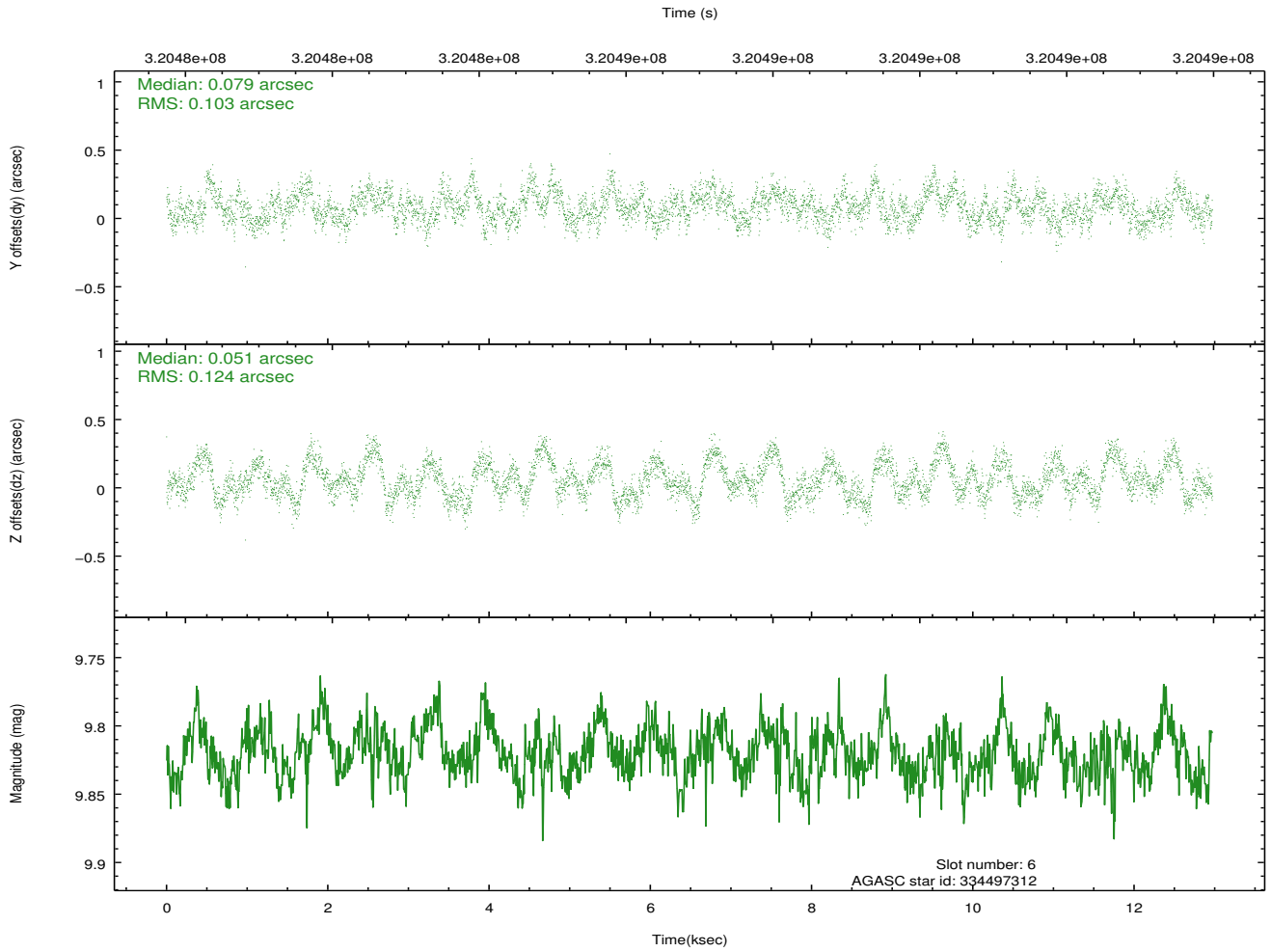
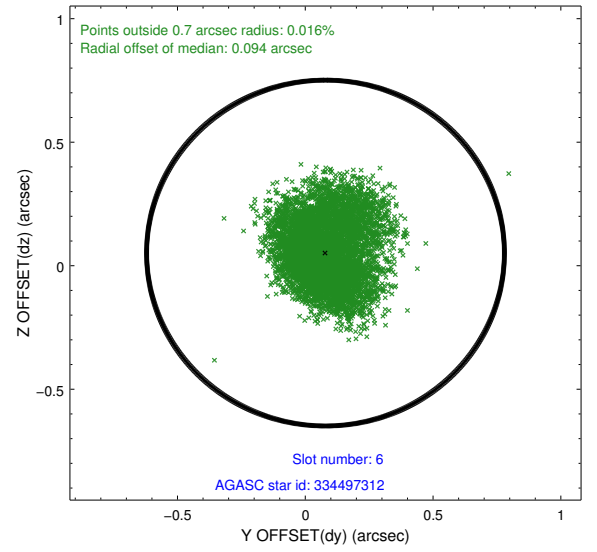
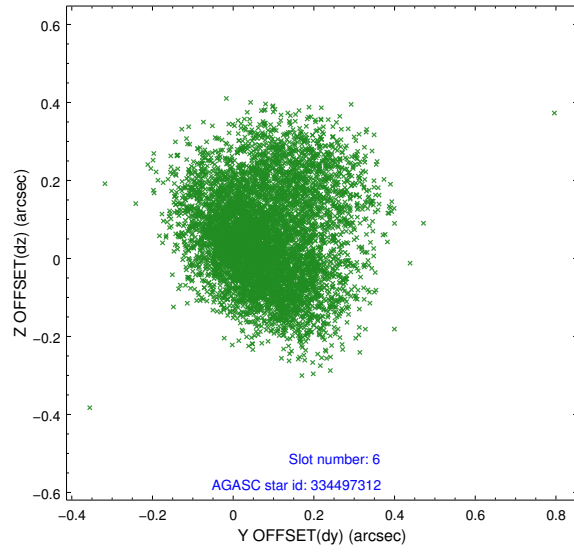
2.4.2 Slot 4



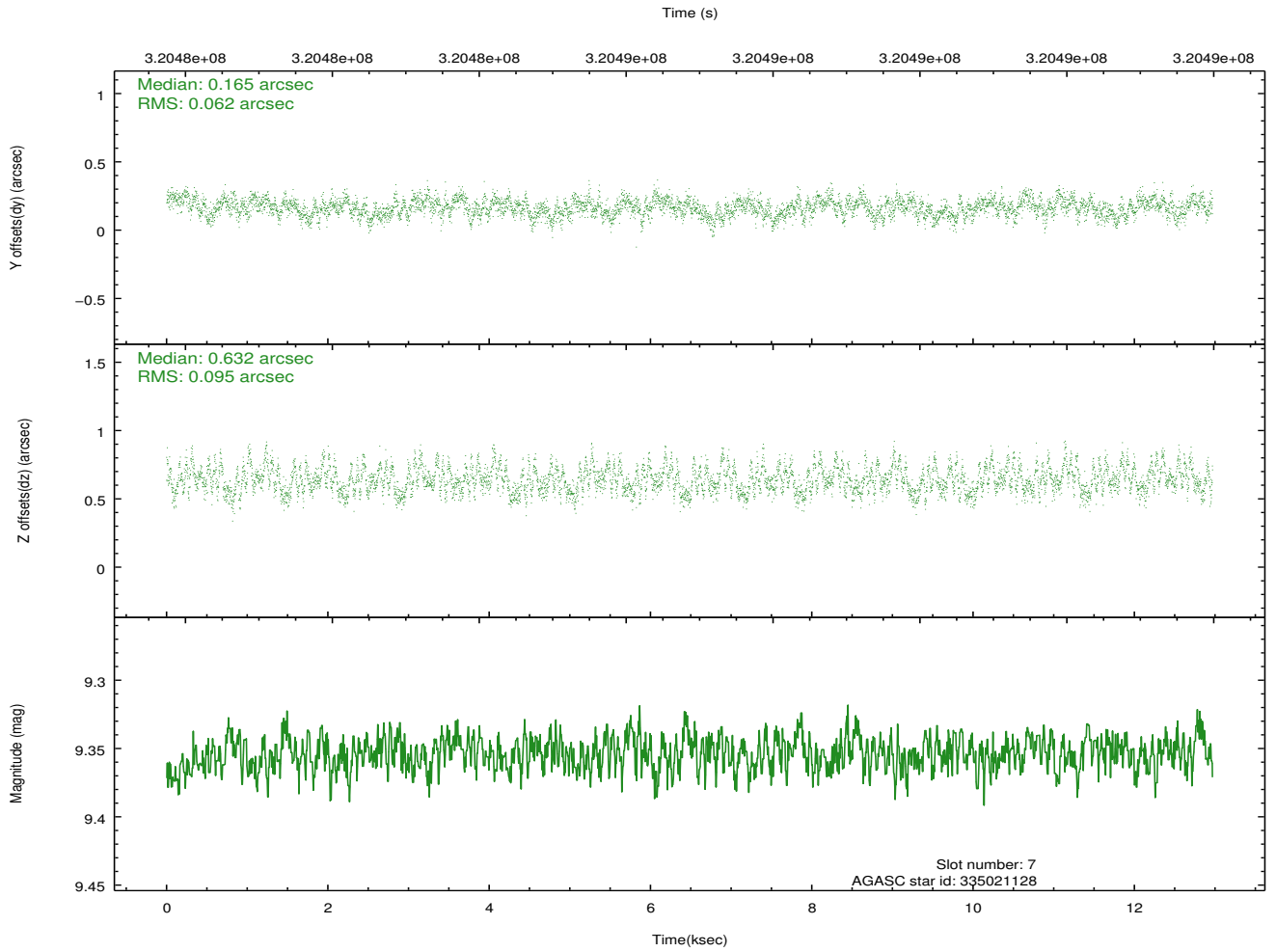
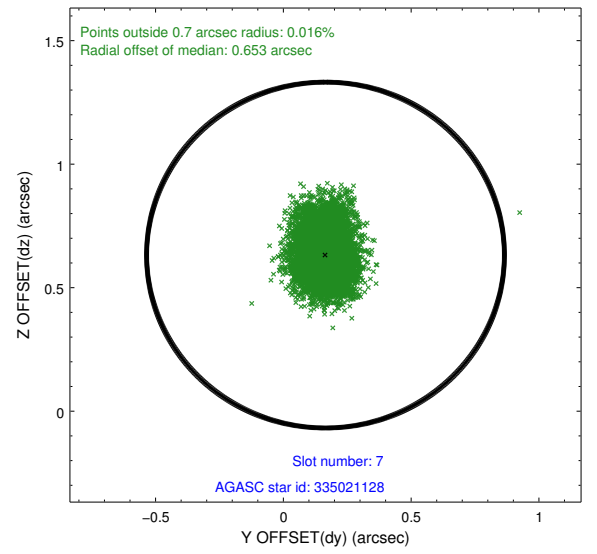
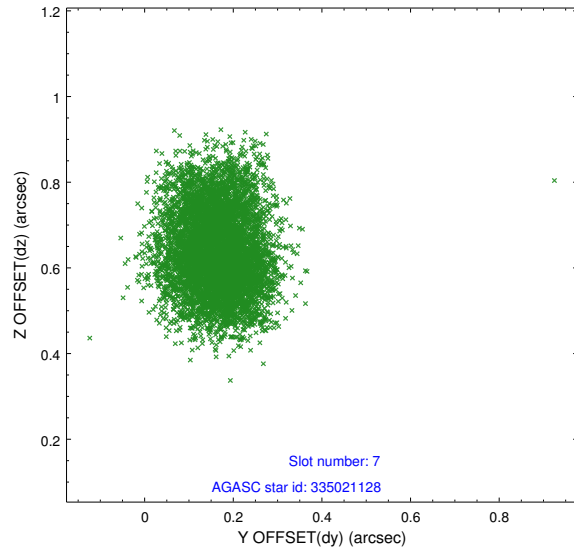
2.4.3 Slot 5



2.4.4 Slot 6

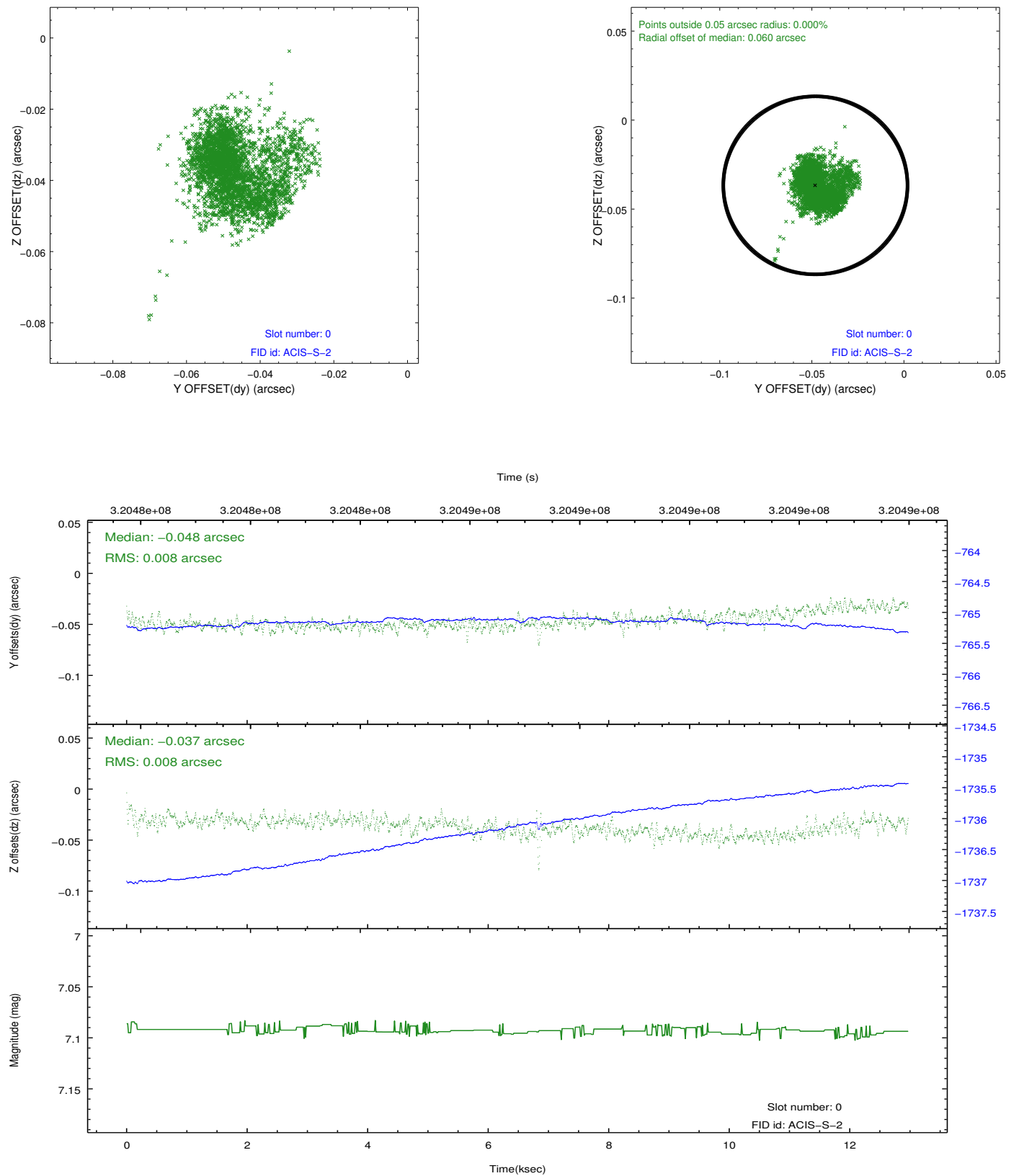


2.4.5 Slot 7

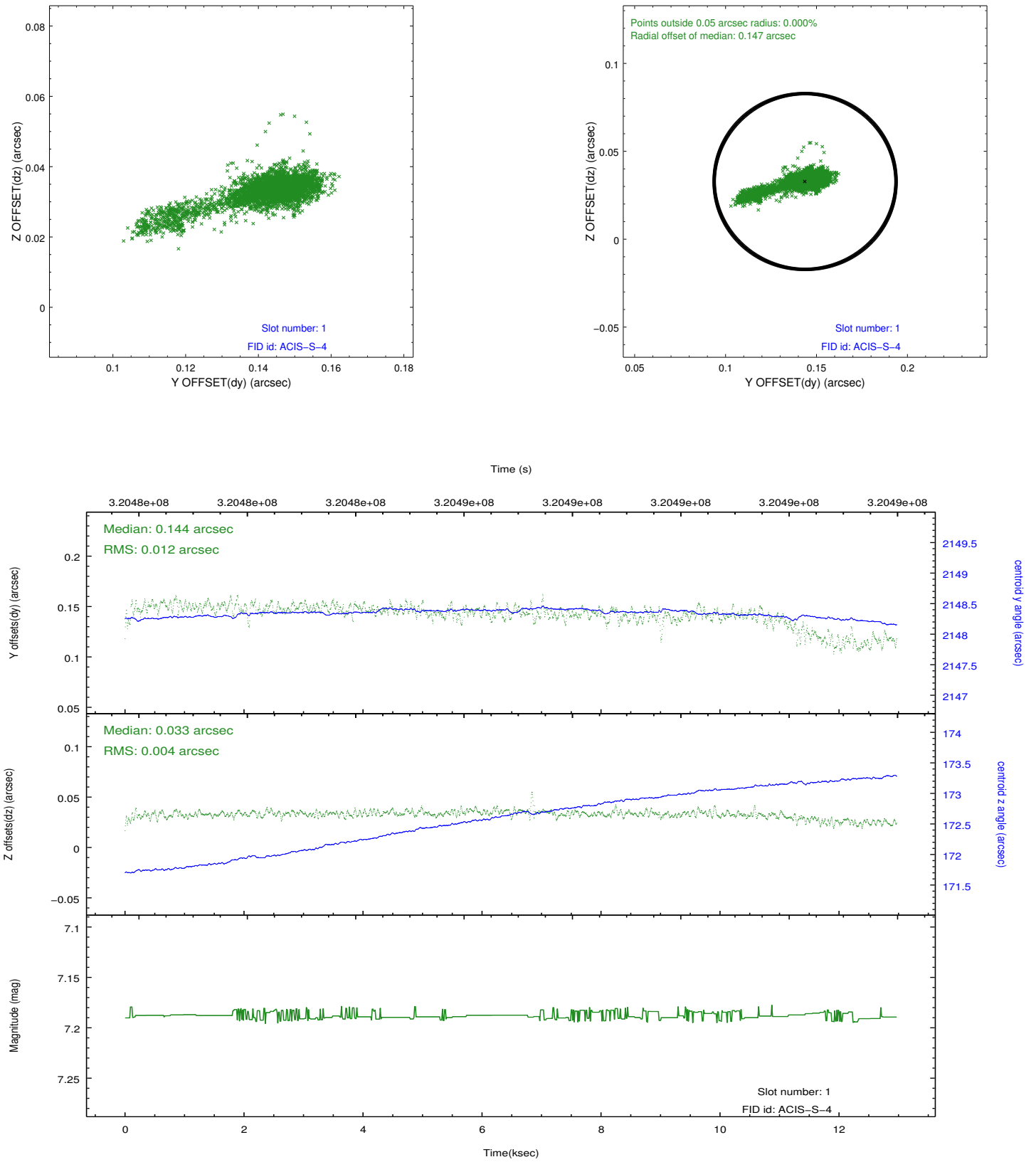


2.5 FID Slots

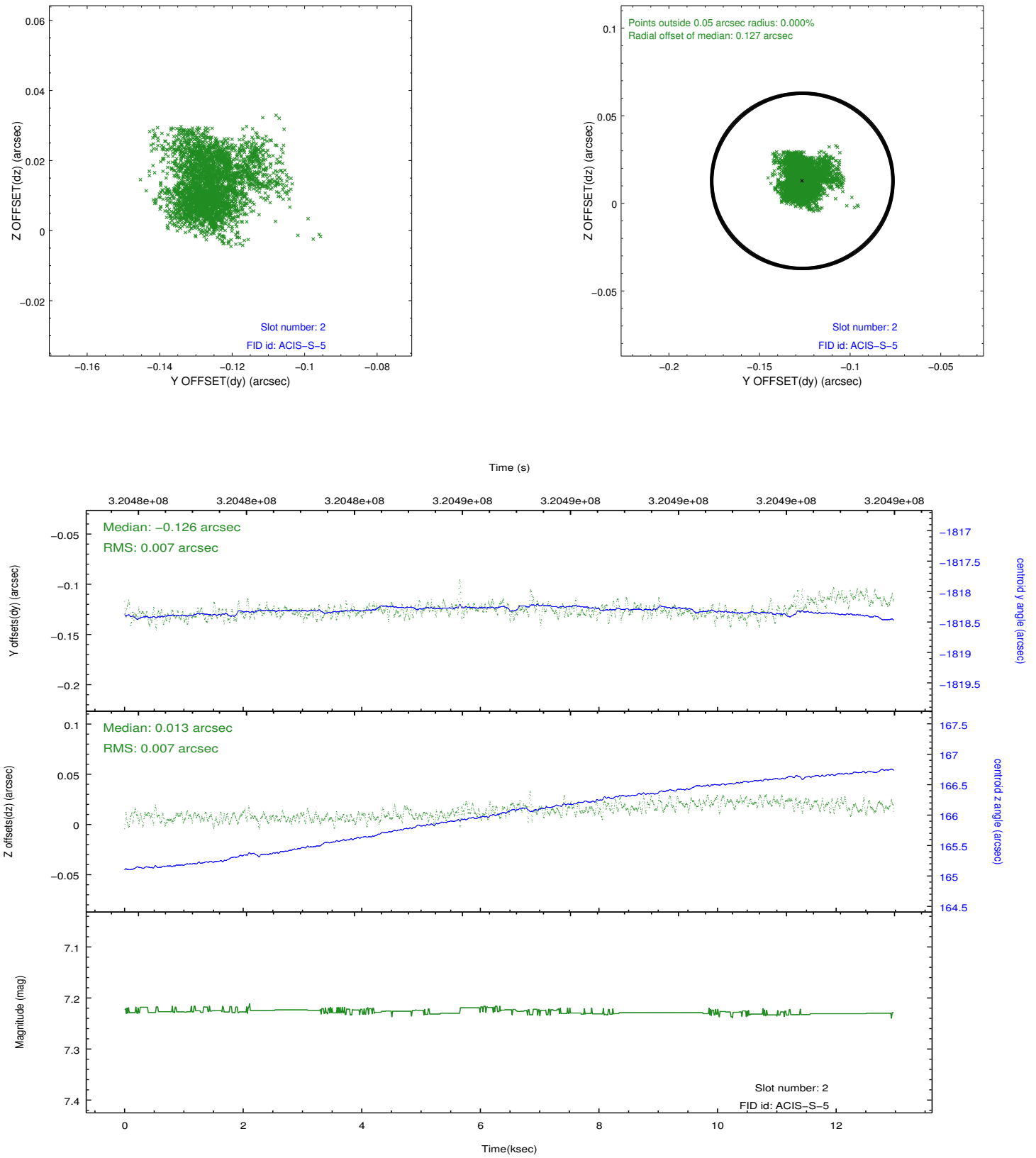
2.5.1 Slot 0



2.5.2 Slot 1



2.5.3 Slot 2



A Summary

A.1 Status

V&V Scientist	Jen Lauer
V&V Date (YYYY-MM-DD)	2012.05.13
V&V Edition	1
V&V Disposition and Status	OK
V&V Charge Time	12.9642

A.2 Comments