

V&V Reference Report

L2 ASCDS Version : 8.4.3.1

Observation 7162 - L2 Version 2
Chandra X-Ray Center

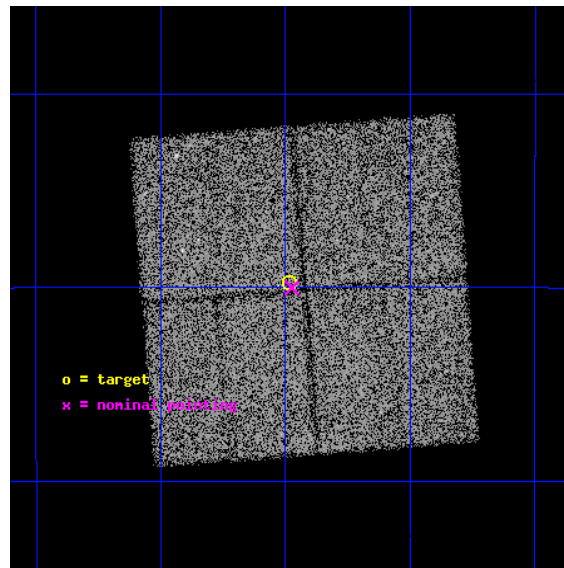
L2 Processing Date : Apr 12 2012

Contents

1	Front	2
2	OBI	3
2.1	OBI	3
2.1.1	Images	3
2.1.2	Bias	3
2.1.3	Parameters	4
2.1.4	Events	4
2.2	Compared Parameters	5
2.3	Aspect	6
2.4	Star Slots	9
2.4.1	Slot 3	9
2.4.2	Slot 4	10
2.4.3	Slot 5	11
2.4.4	Slot 6	12
2.4.5	Slot 7	13
2.5	FID Slots	14
2.5.1	Slot 0	14
2.5.2	Slot 1	15
2.5.3	Slot 2	16
A	Summary	17
A.1	Status	17
A.2	Comments	17

1 Front

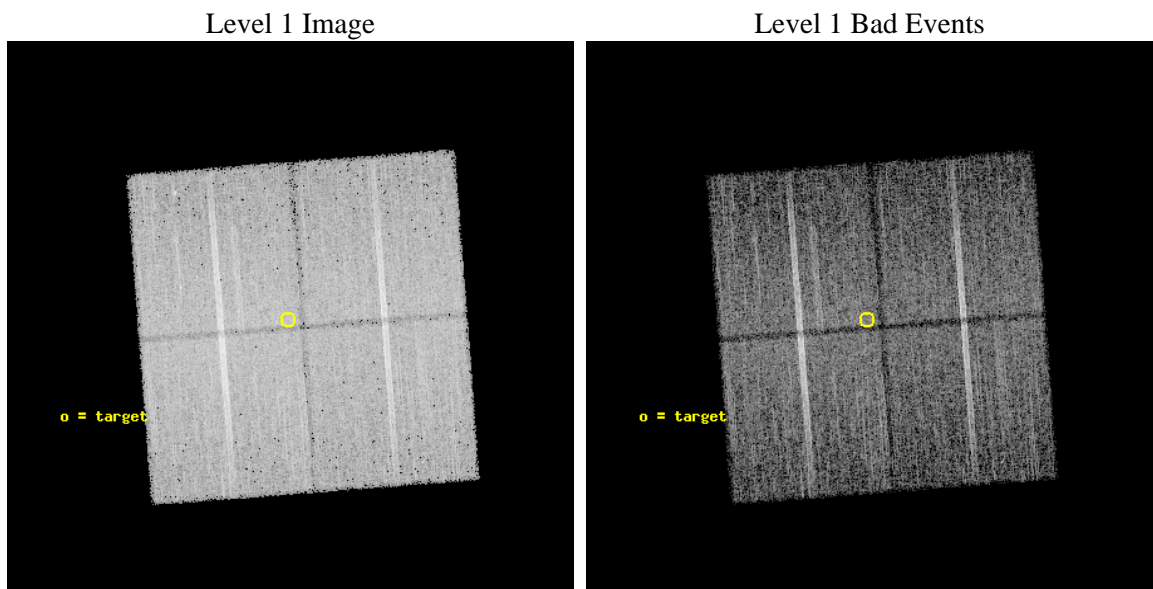
seq_num	600600	Sequence number
obs_id	7162	Observation id
title	Galactic Bulge Latitude Survey	Proposal title
observer	Professor Johnathan Grindlay	Principal investigator
object	GBW6	Source name
dtcycle	0	
cycle	P	events from which exps? Prim/Second/Both
ra_targ	267.870833	Observer's specified target RA [deg]
dec_targ	-29.49625	Observer's specified target Dec [deg]
ra_nom	267.86841683628	Nominal RA [deg]
dec_nom	-29.500381971629	Nominal Dec [deg]
roll_nom	265.59752644251	Nominal Roll [deg]
revision	2	Processing version of data
ontime	15124.900116324	Sum of GTIs [s]
livetime	14927.282161515	Livetime [s]
ontime0	15118.618165851	Sum of GTIs [s]
ontime1	15121.759145975	Sum of GTIs [s]
ontime2	15121.759156048	Sum of GTIs [s]
ontime3	15124.900116324	Sum of GTIs [s]
l2events	76961	Number of level 2 events



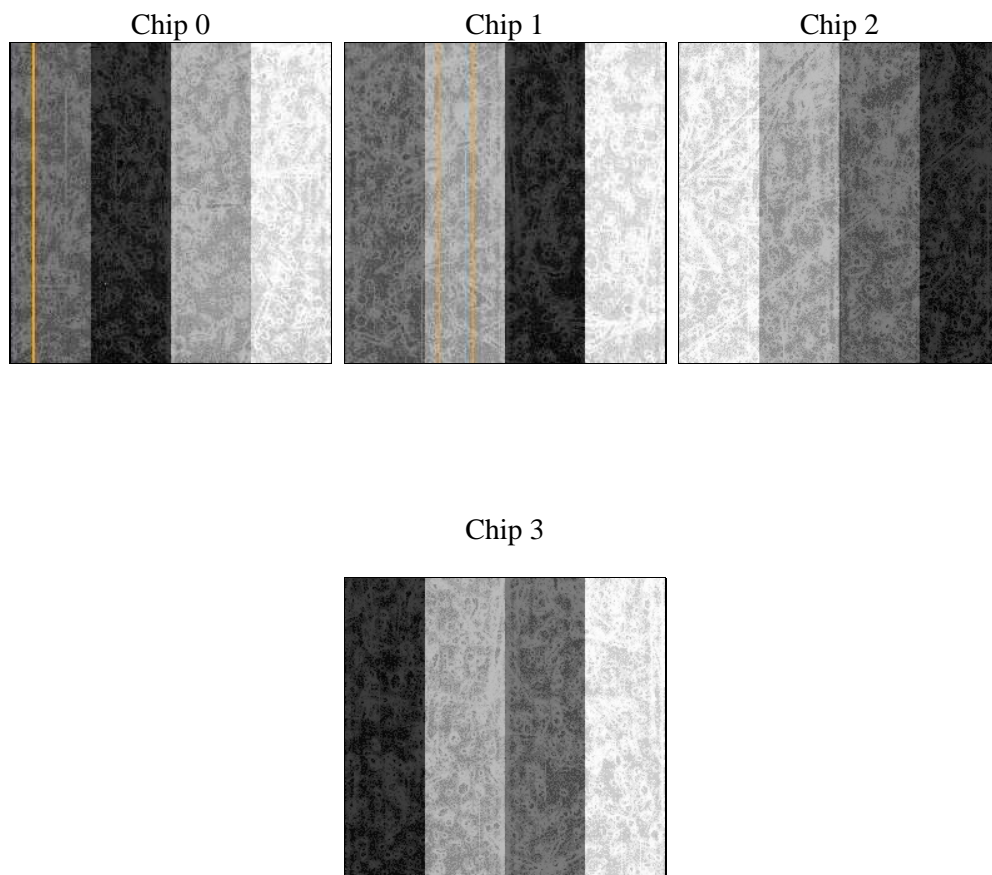
2 OBI

2.1 OBI

2.1.1 Images



2.1.2 Bias



2.1.3 Parameters

obi_num	1	Obi number	sched_exp_time	15000.000000	[s] Scheduled observation exposure time
ascdsver	8.4.3.1	Processing system revision	ontime	15124.900116324	Sum of GTIs [s]
caldsver	4.4.9	 	ontime0	15118.618165851	Sum of GTIs [s]
date	2012-04-12T09:06:45	Date and time of file creation	ontime1	15121.759145975	Sum of GTIs [s]
revision	2	Processing version of data	ontime2	15121.759156048	Sum of GTIs [s]
			ontime3	15124.900116324	Sum of GTIs [s]
			l1events	621883	Number of level 1 events

2.1.4 Events

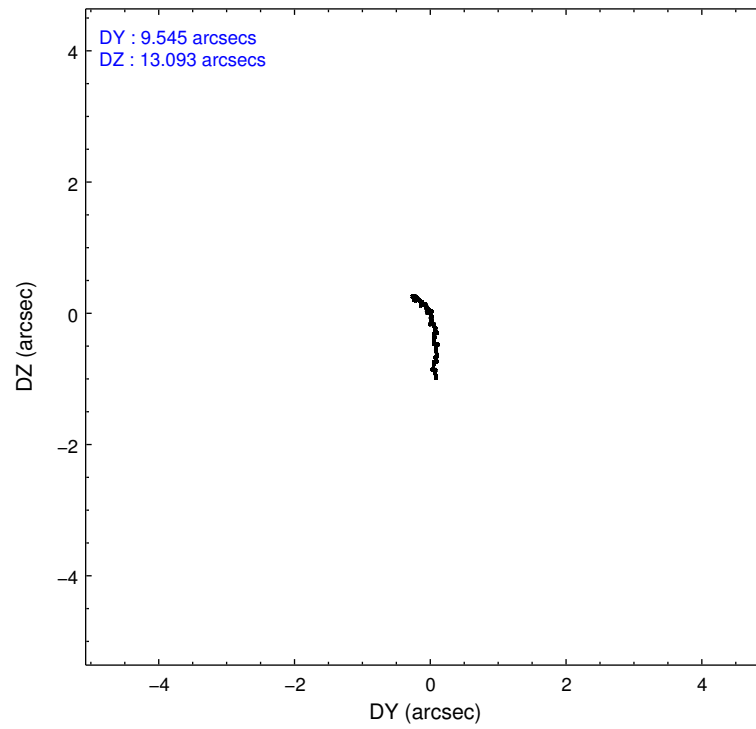
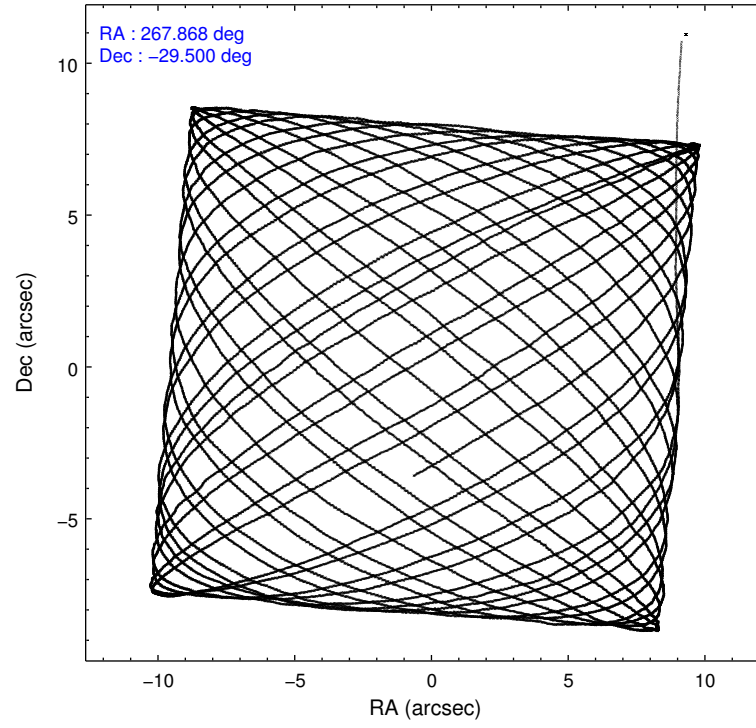
	ccd 0	ccd 1	ccd 2	ccd 3
level 1 events	150474	146833	166726	157850
rejected events	127814	125543	143386	136977
rejected %	84%	85%	86%	86%

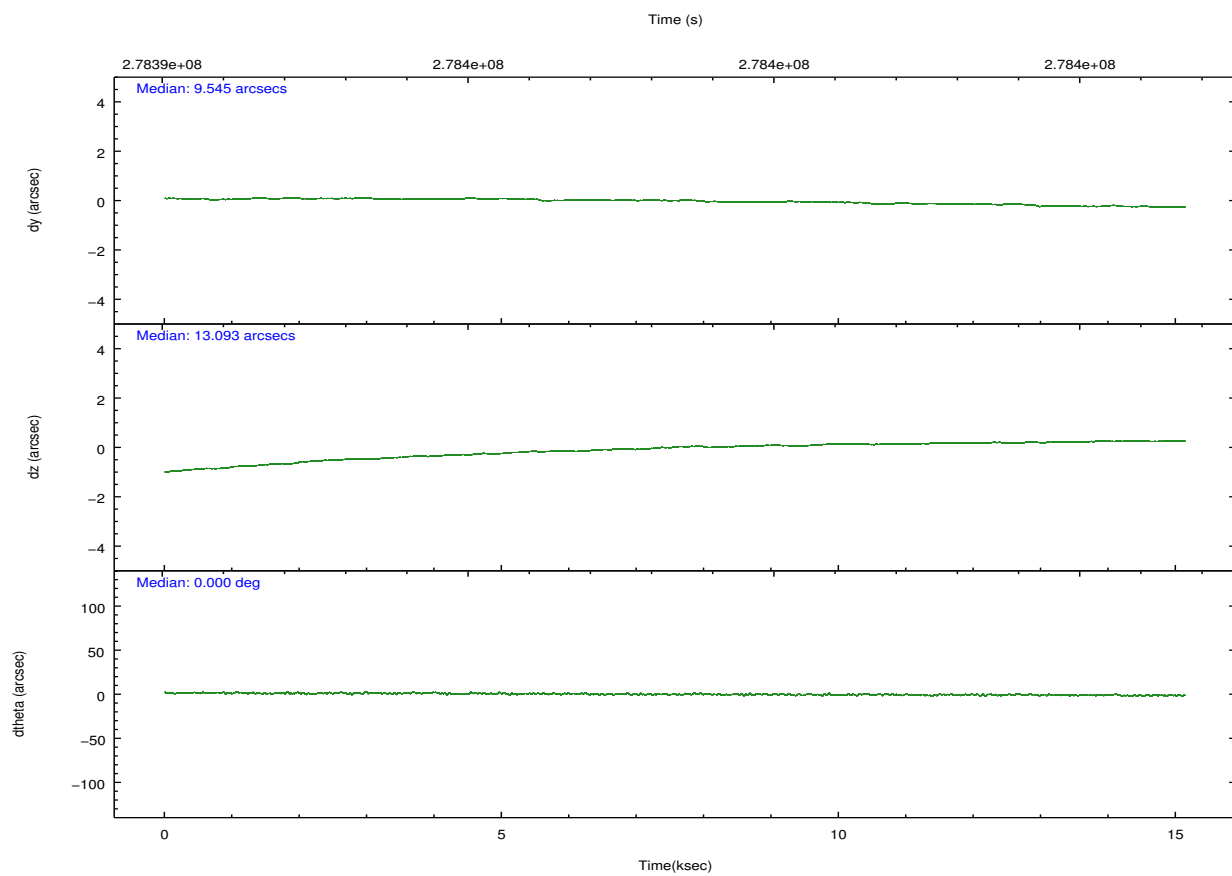
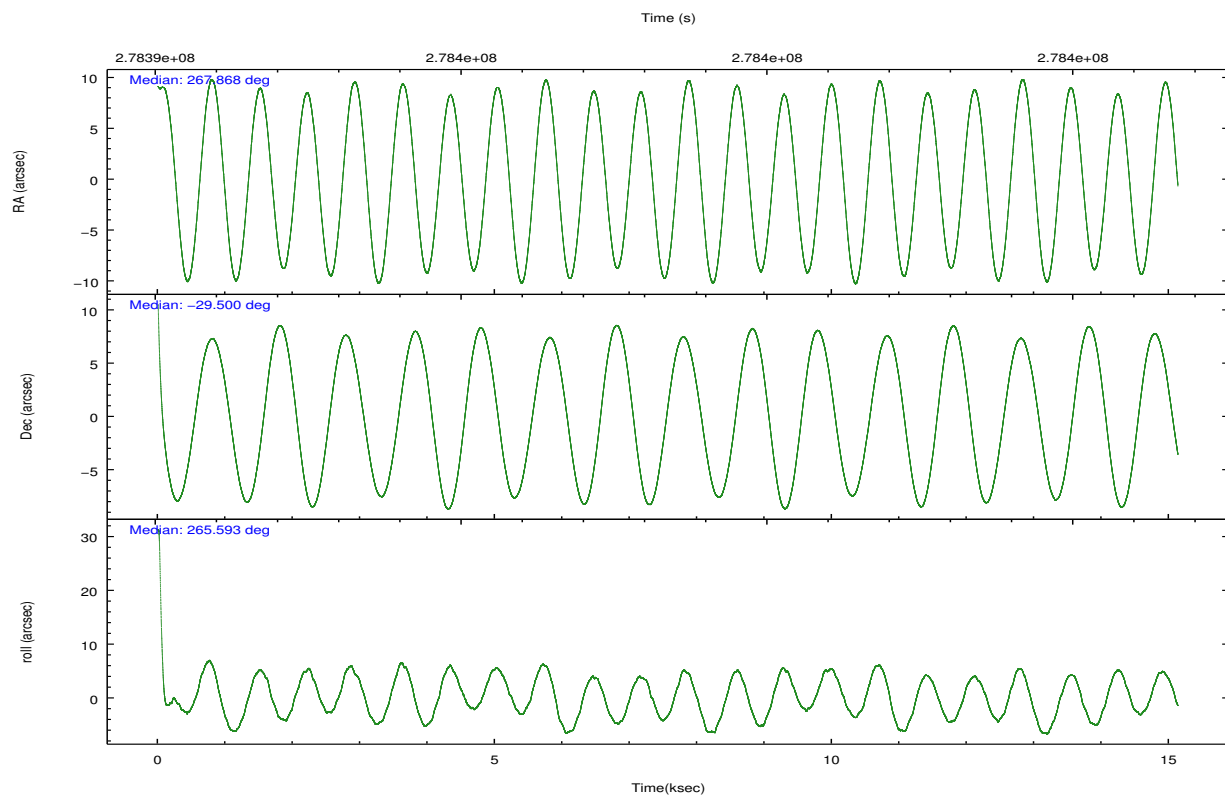
	ccd 0	ccd 1	ccd 2	ccd 3
grade 0 events	12895	10640	14001	11567
	8%	7%	8%	7%
grade 1 events	116	86	142	128
	0%	0%	0%	0%
grade 2 events	4697	4905	4374	4137
	3%	3%	2%	2%
grade 3 events	1937	1931	1900	1929
	1%	1%	1%	1%
grade 4 events	1851	1944	1927	1858
	1%	1%	1%	1%
grade 5 events	6090	6680	5878	7146
	4%	4%	3%	4%
grade 6 events	3339	3903	3108	3352
	2%	2%	1%	2%
grade 7 events	119549	116744	135396	127733
	79%	79%	81%	80%

2.2 Compared Parameters

Parameter	Planned	Actual	Parameter	Planned	Actual
Instrument	ACIS	ACIS	Obspar format version number	7	7
Detector	ACIS-0123	ACIS-0123	Obspar file type	PREDICTED	ACTUAL
Grating	NONE	NONE	Obspar update status	NONE	UPDATED
Data mode	VFAINT	VFAINT	Number of optional ACIS chips dropped	0	0
Observation mode	POINTING	POINTING	On-chip summing requested	N	N
[deg] Pointing RA	267.854677	267.8684168362839	Subarray requested	NONE	NONE
[deg] Pointing Dec	-29.475722	-29.50038197162907	Alternating exposures requested	N	N
[deg] Pointing Roll	265.382050	265.5975264425106	[s] Primary exposure time	0.000000	3.1
[mm] SIM focus pos	-0.782348	-0.7809083437167272			
[mm] SIM defocus	0	0.001439871863259334			
[mm] SIM translation stage pos	-233.592463	-233.5874344608287			
[mm] SIM translation stage offset	0	-0.005018542100998502			
[s] Observation start time (MET)	278390959.184000	278389186.07753			
Observation start date	2006-10-28T02:48:14	2006-10-28T02:19:46			
[s] Observation end time (MET)	278405959.184000	278406467.06585			
Observation end date	2006-10-28T06:58:14	2006-10-28T07:07:47			
Read mode	TIMED	TIMED			

2.3 Aspect



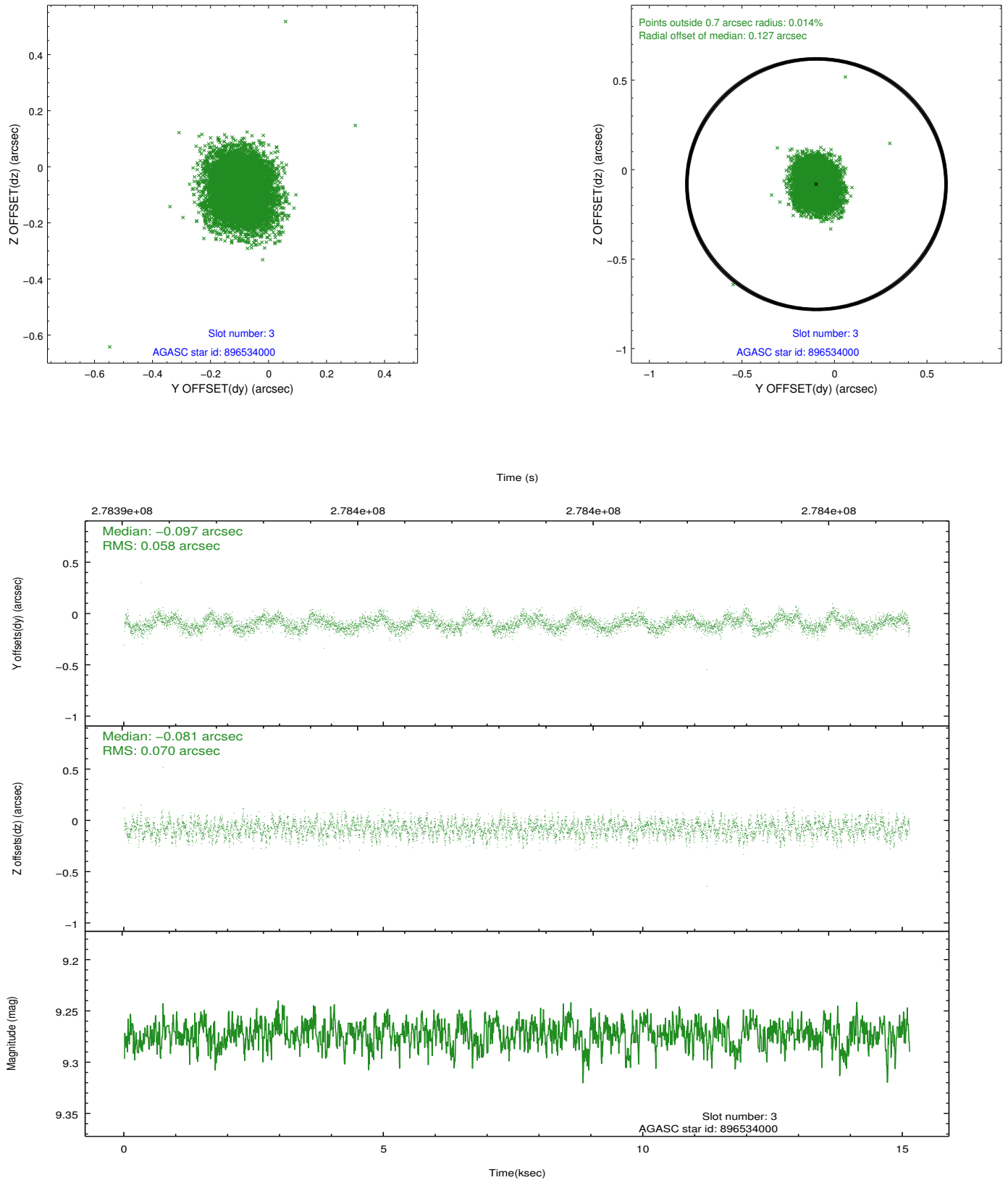


Slot Statistics

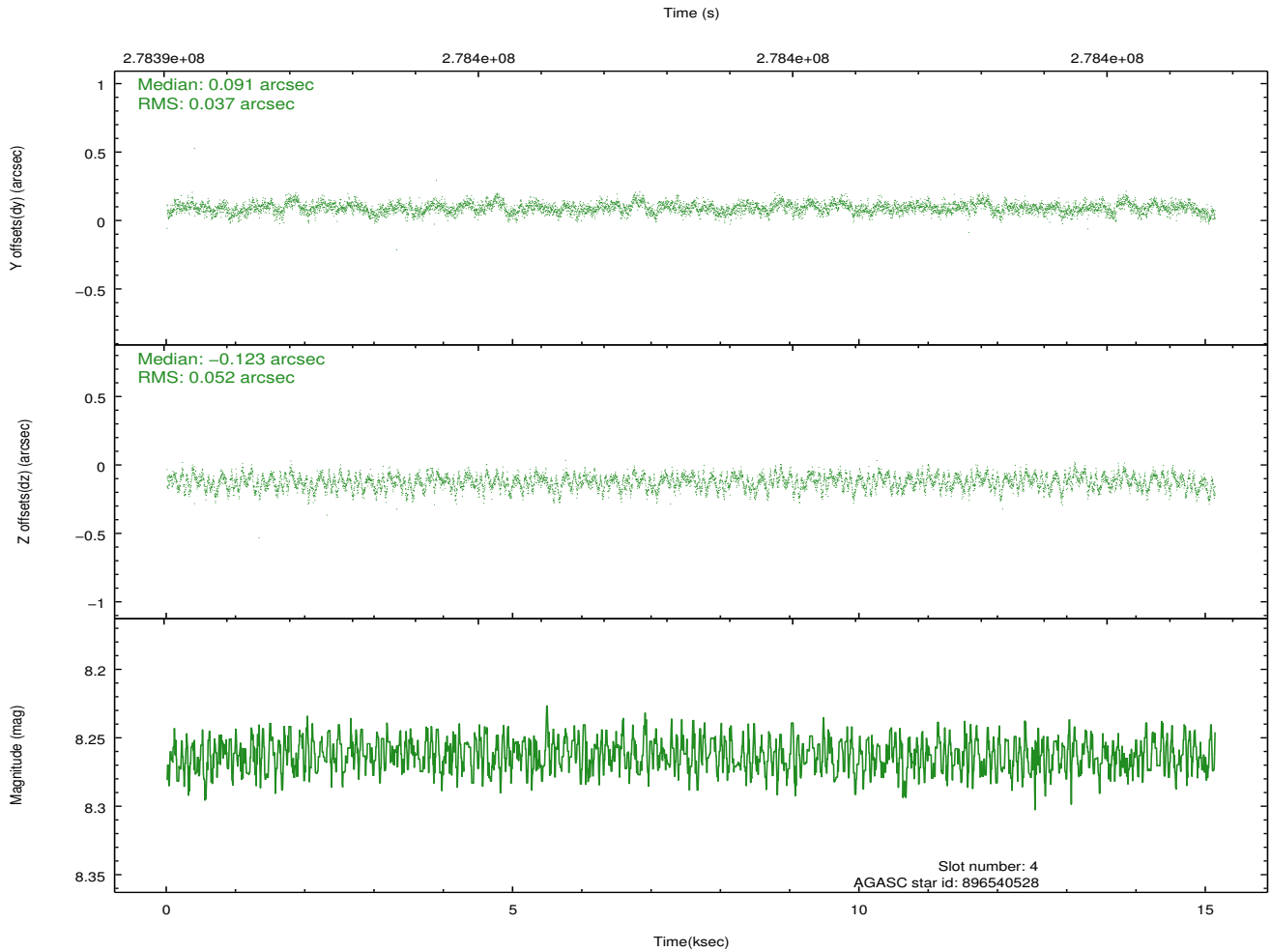
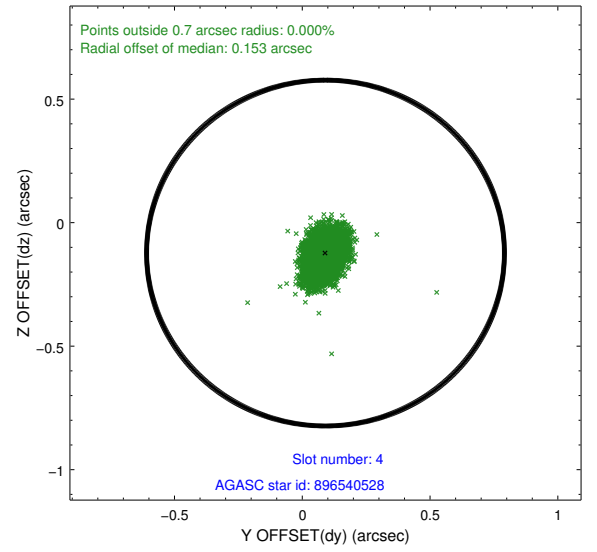
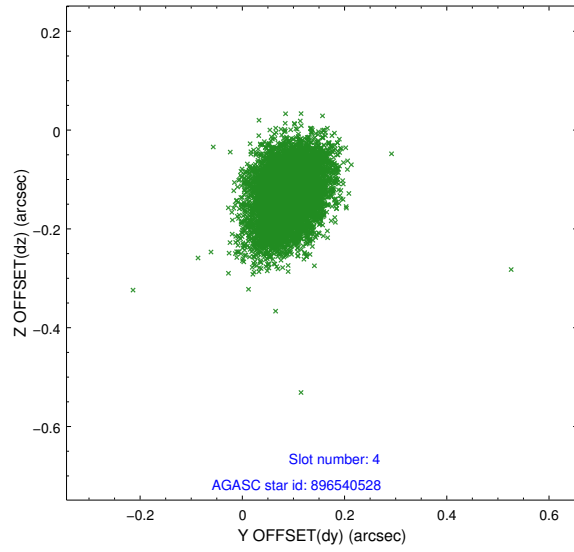
slot	status	id	mag	n_pts	med_dy	med_dz	dr1	dr2	ra	dec	mean_y	mean_z
0	FID	ACIS-I-2	7.14	3691	-0.011	-0.073	0.012	0.023	0.000000	0.000000	-764.11	-842.92
1	FID	ACIS-I-5	7.23	3691	-0.167	0.060	0.011	0.019	0.000000	0.000000	-1818.43	1060.95
2	FID	ACIS-I-6	7.24	3690	0.084	0.081	0.008	0.014	0.000000	0.000000	395.47	1705.74
3	GUIDE	896534000	9.27	7377	-0.097	-0.081	0.098	0.154	267.299113	-29.228915	-740.54	-1811.02
4	GUIDE	896540528	8.26	7380	0.091	-0.123	0.067	0.111	267.368305	-29.314773	-450.88	-1568.22
5	GUIDE	898247688	8.66	7379	-0.164	0.153	0.070	0.117	268.426687	-29.012154	-1804.01	1660.88
6	GUIDE	898248800	8.20	7379	-0.045	-0.061	0.051	0.083	267.977609	-29.931731	1605.71	514.79
7	GUIDE	967053960	9.25	7380	0.212	0.119	0.107	0.165	268.185736	-30.091336	2128.23	1206.82

2.4 Star Slots

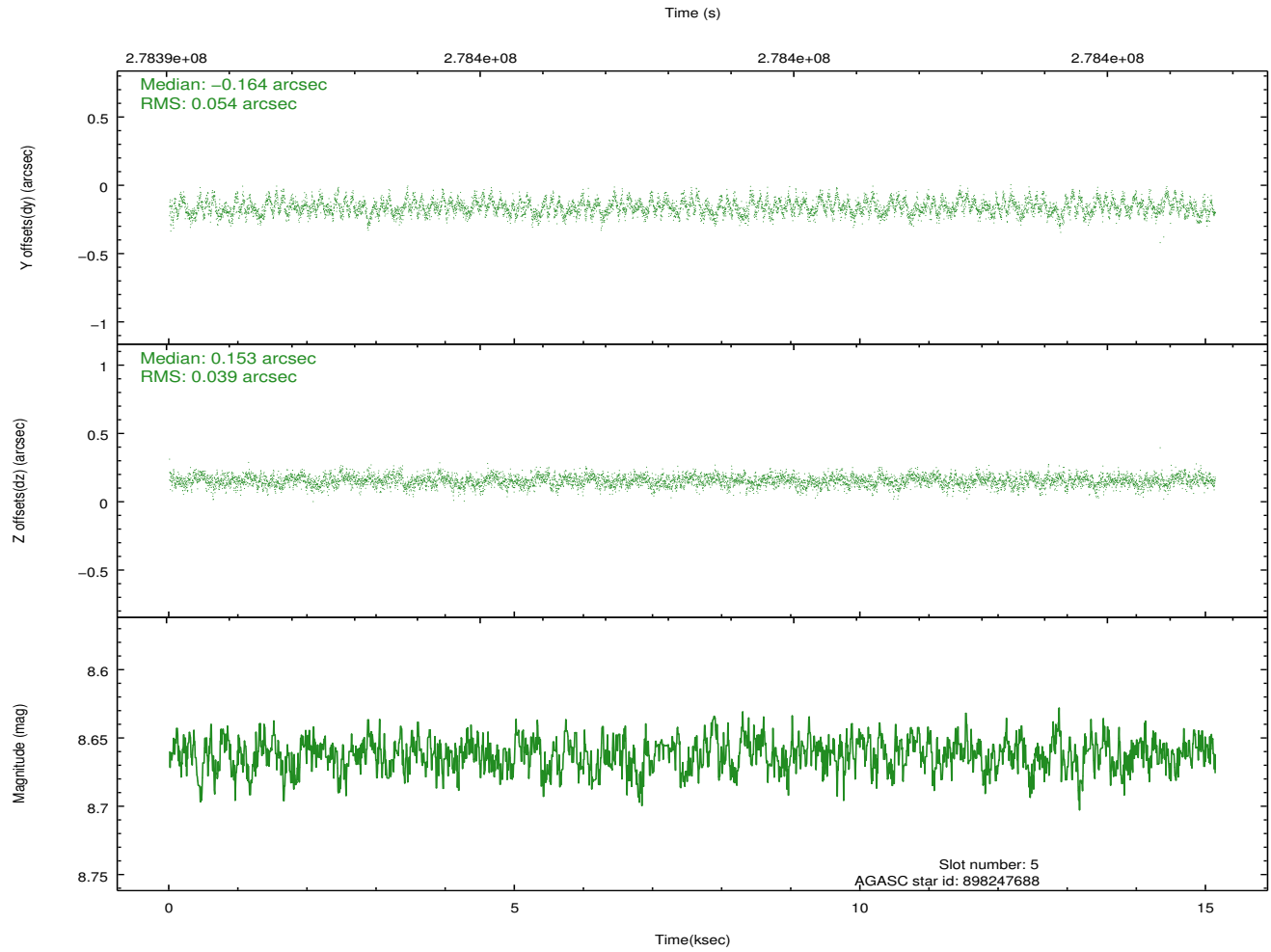
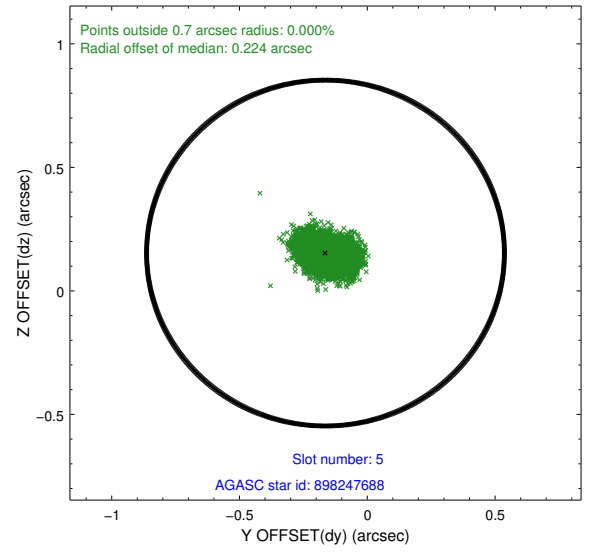
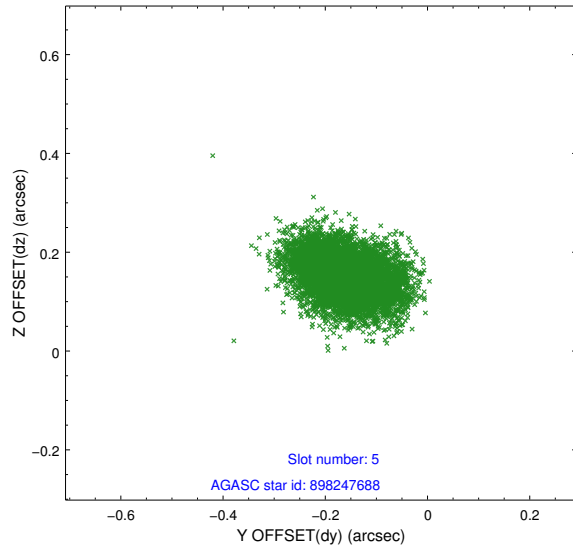
2.4.1 Slot 3



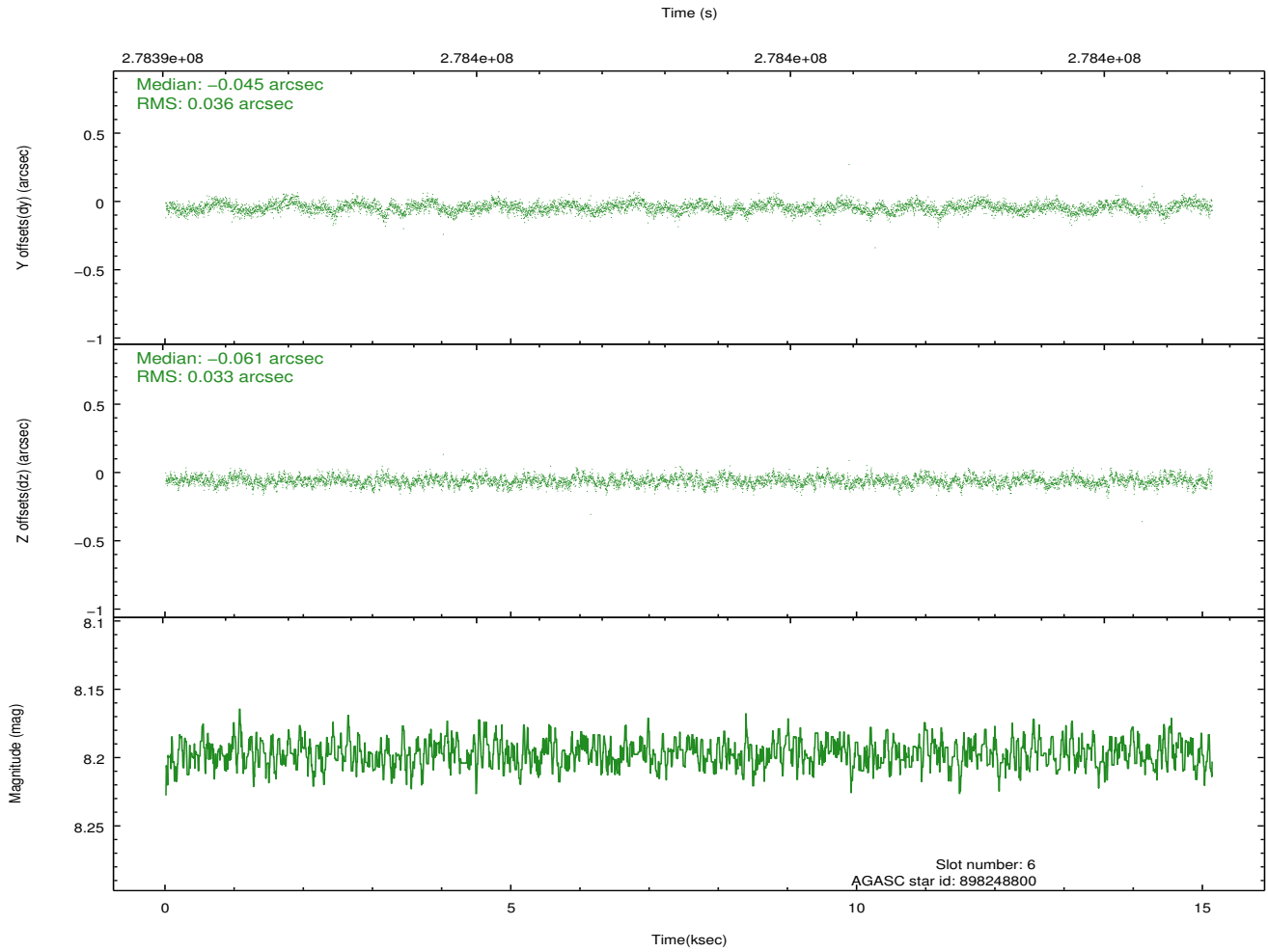
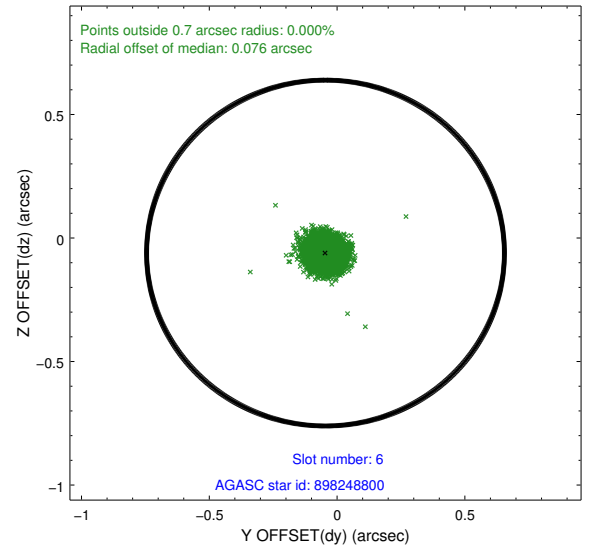
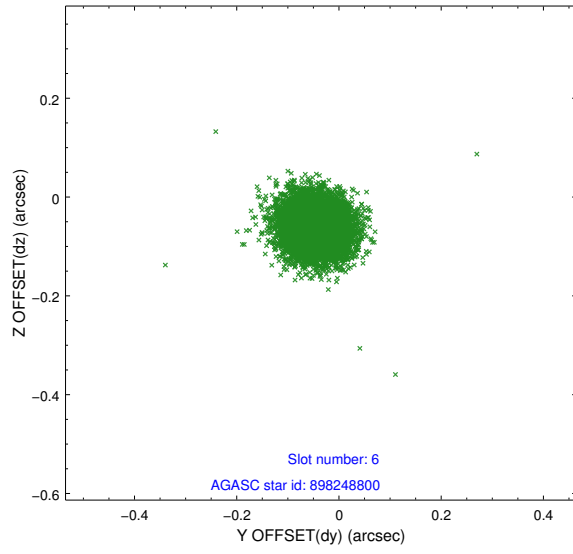
2.4.2 Slot 4



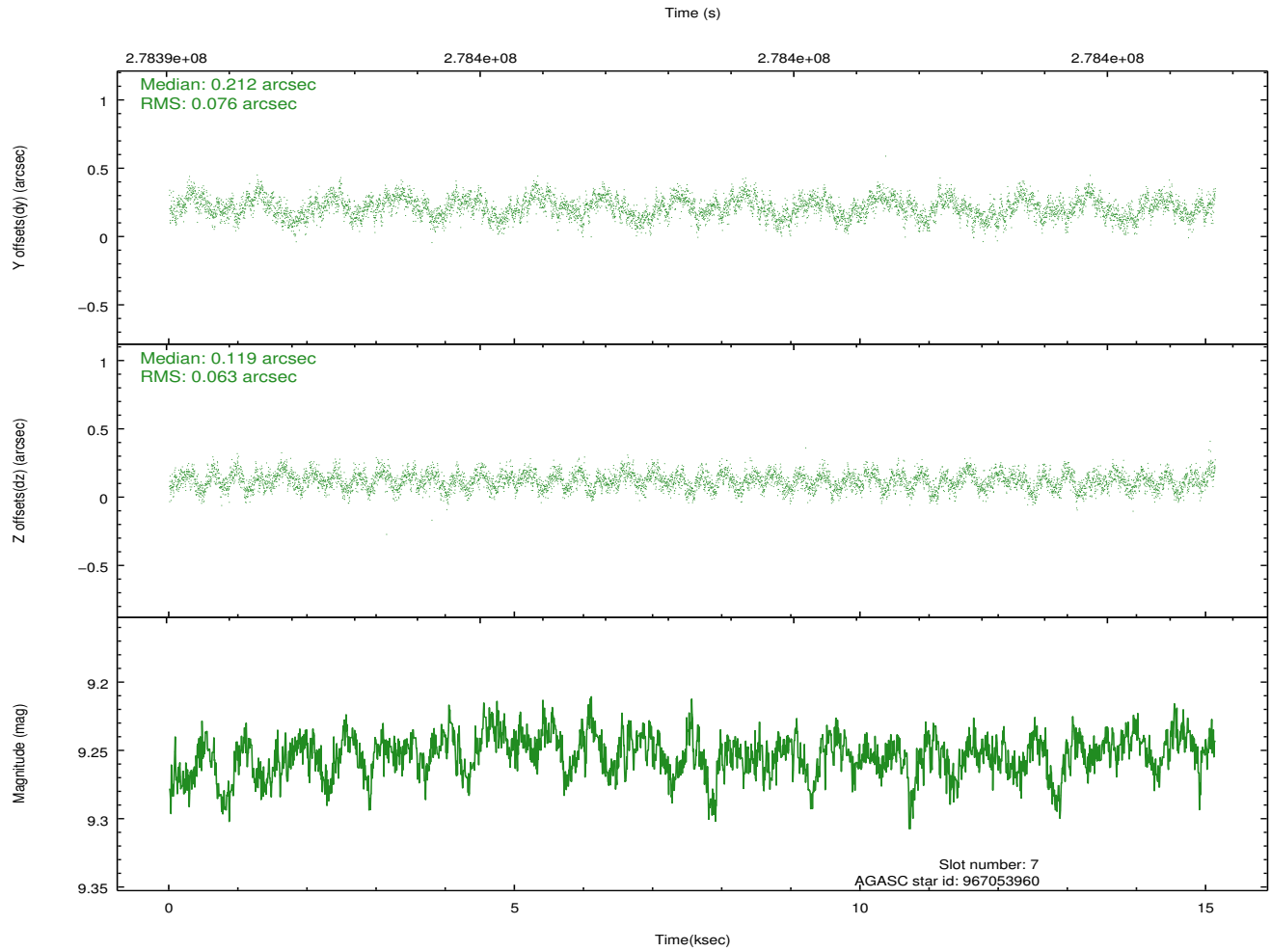
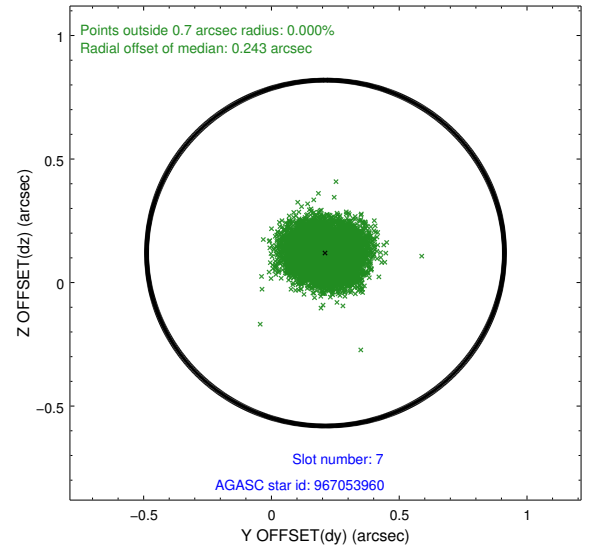
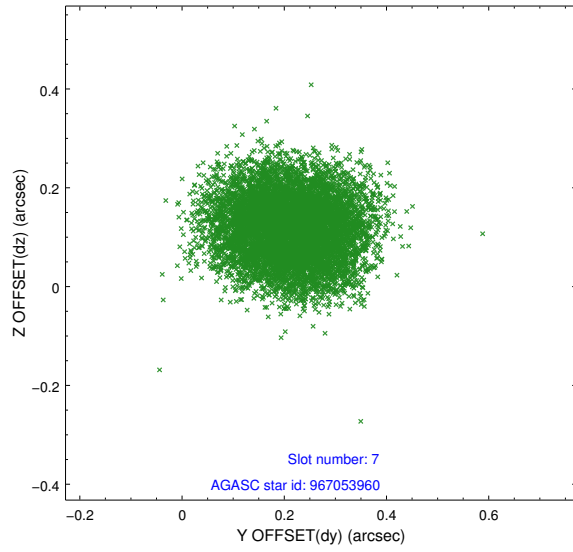
2.4.3 Slot 5



2.4.4 Slot 6

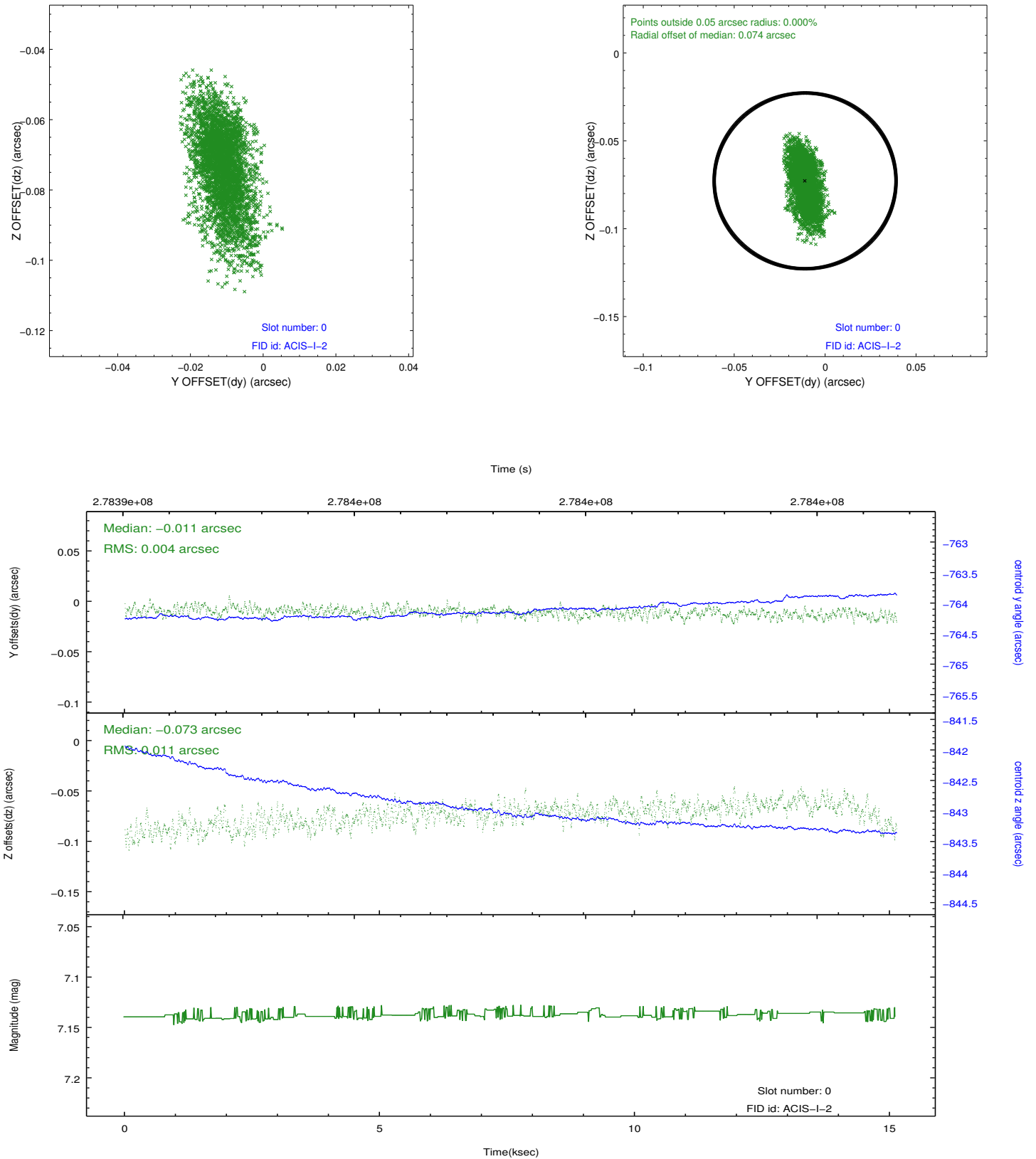


2.4.5 Slot 7

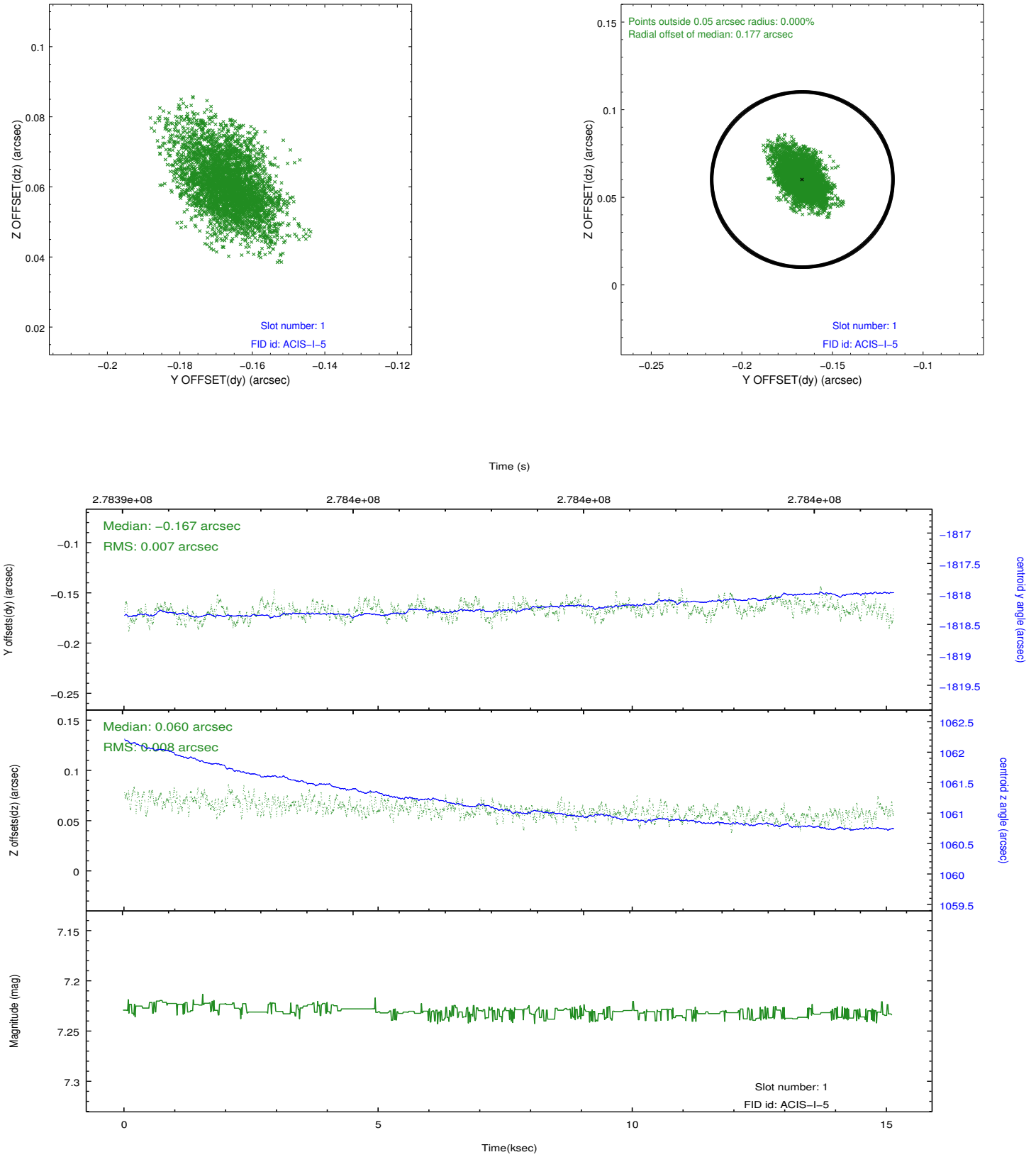


2.5 FID Slots

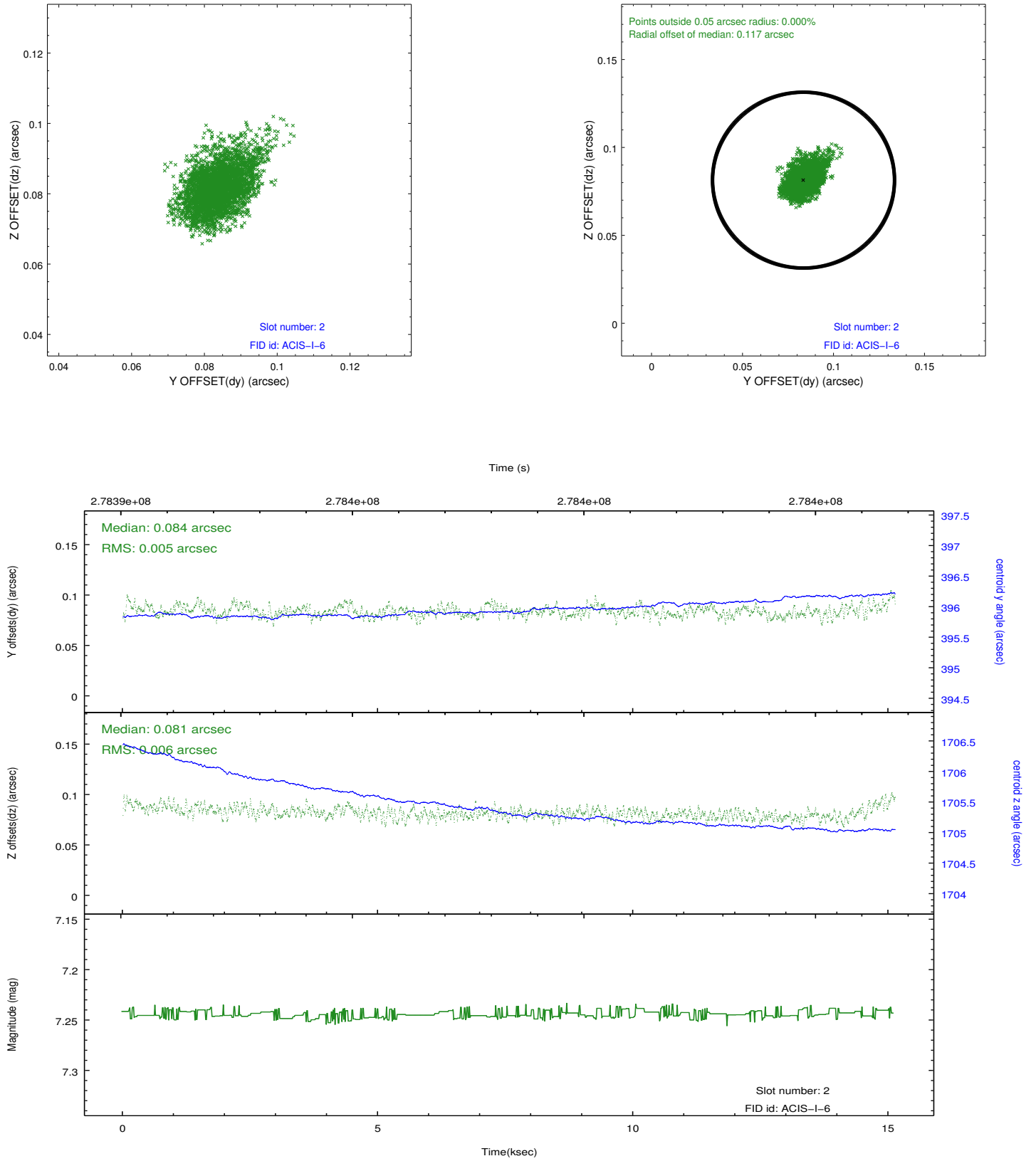
2.5.1 Slot 0



2.5.2 Slot 1



2.5.3 Slot 2



A Summary

A.1 Status

V&V Scientist	Beth Sundheim
V&V Date (YYYY-MM-DD)	2012.04.12
V&V Edition	1
V&V Disposition and Status	OK
V&V Charge Time	15.1249001

A.2 Comments

Joint proposal with NOAO.