

V&V Reference Report

L2 ASCDS Version : 8.4.3

Observation 7092 - L2 Version 2
Chandra X-Ray Center

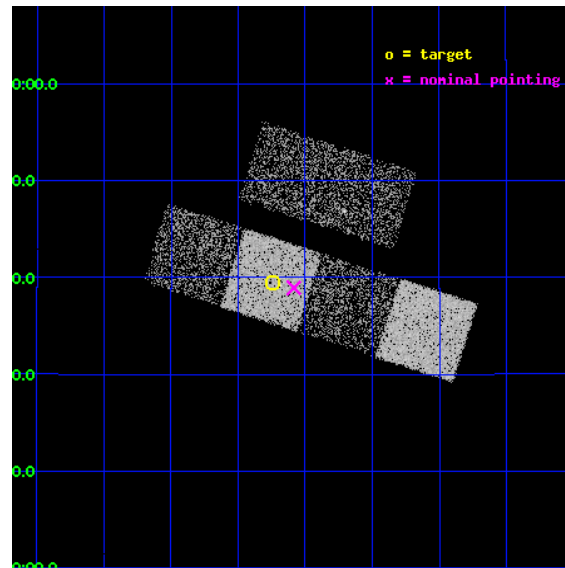
L2 Processing Date : Mar 29 2012

Contents

1	Front	2
2	OBI	3
2.1	OBI	3
2.1.1	Images	3
2.1.2	Bias	3
2.1.3	Parameters	4
2.1.4	Events	4
2.2	Compared Parameters	5
2.3	Aspect	6
2.4	Star Slots	9
2.4.1	Slot 3	9
2.4.2	Slot 4	10
2.4.3	Slot 5	11
2.4.4	Slot 6	12
2.4.5	Slot 7	13
2.5	FID Slots	14
2.5.1	Slot 0	14
2.5.2	Slot 1	15
2.5.3	Slot 2	16
A	Summary	17
A.1	Status	17
A.2	Comments	17

1 Front

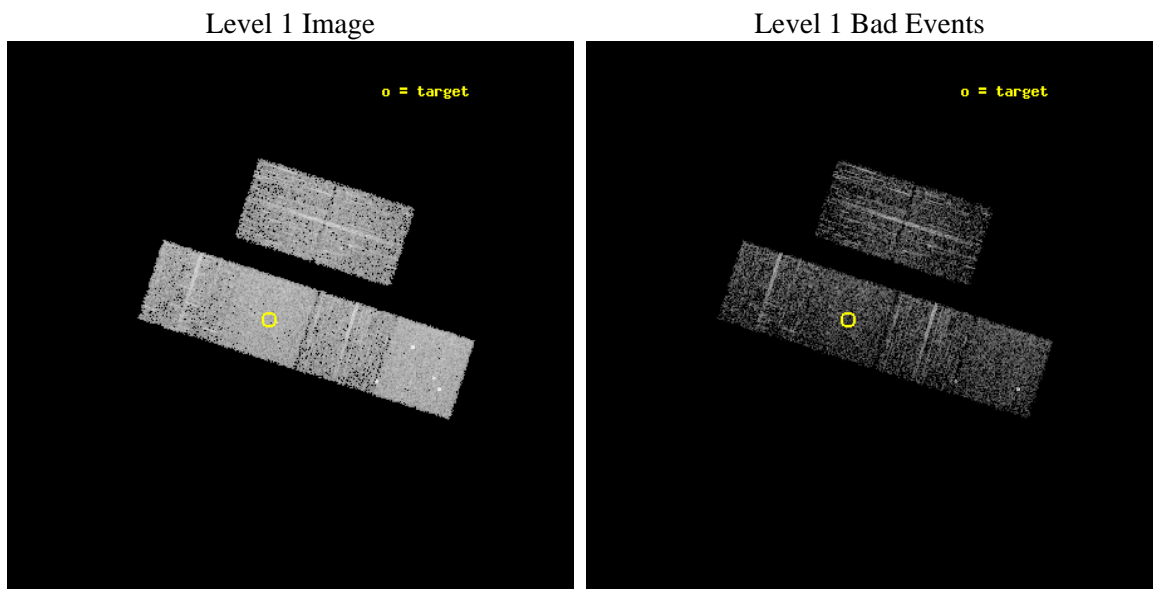
seq_num	600530	Sequence number
obs_id	7092	Observation id
title	A Complete Sample of ULX Host Galaxies	Proposal title
observer	Douglas Swartz	Principal investigator
object	NGC 4204	Source name
dtcycle	0	
cycle	P	events from which exps? Prim/Second/Both
ra_targ	183.809583	Observer's specified target RA [deg]
dec_targ	20.658889	Observer's specified target Dec [deg]
ra_nom	183.77103083948	Nominal RA [deg]
dec_nom	20.649101405831	Nominal Dec [deg]
roll_nom	197.71769132832	Nominal Roll [deg]
revision	2	Processing version of data
ontime	2009.5999925137	Sum of GTIs [s]
livetime	1984.1532273726	Livetime [s]
ontime2	2009.5999925137	Sum of GTIs [s]
ontime3	2009.5999925137	Sum of GTIs [s]
ontime5	2009.5999925137	Sum of GTIs [s]
ontime6	2009.5999925137	Sum of GTIs [s]
ontime7	2009.5999925137	Sum of GTIs [s]
ontime8	2009.5999925137	Sum of GTIs [s]
l2events	29018	Number of level 2 events



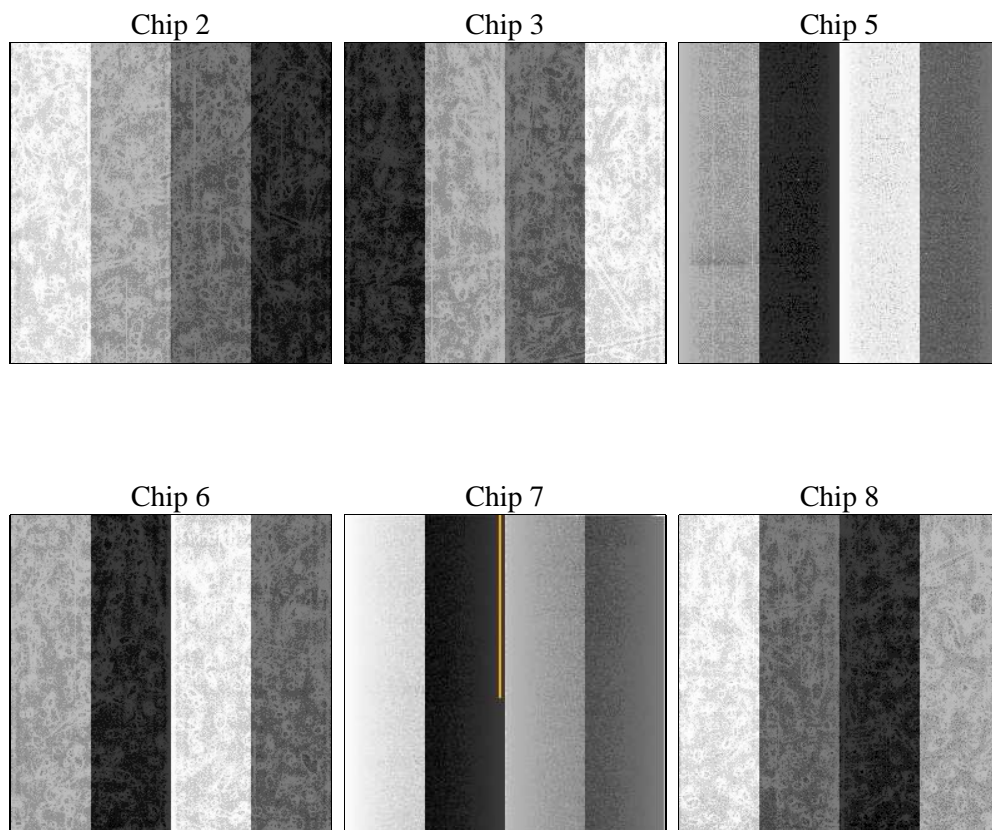
2 OBI

2.1 OBI

2.1.1 Images



2.1.2 Bias



2.1.3 Parameters

obi_num	0	Obi number	sched_exp_time	2000.000000	[s] Scheduled observation exposure time
ascdsver	8.4.3	Processing system revision	ontime	2009.5999925137	Sum of GTIs [s]
caldsver	4.4.8	 	ontime2	2009.5999925137	Sum of GTIs [s]
date	2012-03-29T11:49:56	Date and time of file creation	ontime3	2009.5999925137	Sum of GTIs [s]
revision	2	Processing version of data	ontime5	2009.5999925137	Sum of GTIs [s]
			ontime6	2009.5999925137	Sum of GTIs [s]
			ontime7	2009.5999925137	Sum of GTIs [s]
			ontime8	2009.5999925137	Sum of GTIs [s]
			l1events	129497	Number of level 1 events

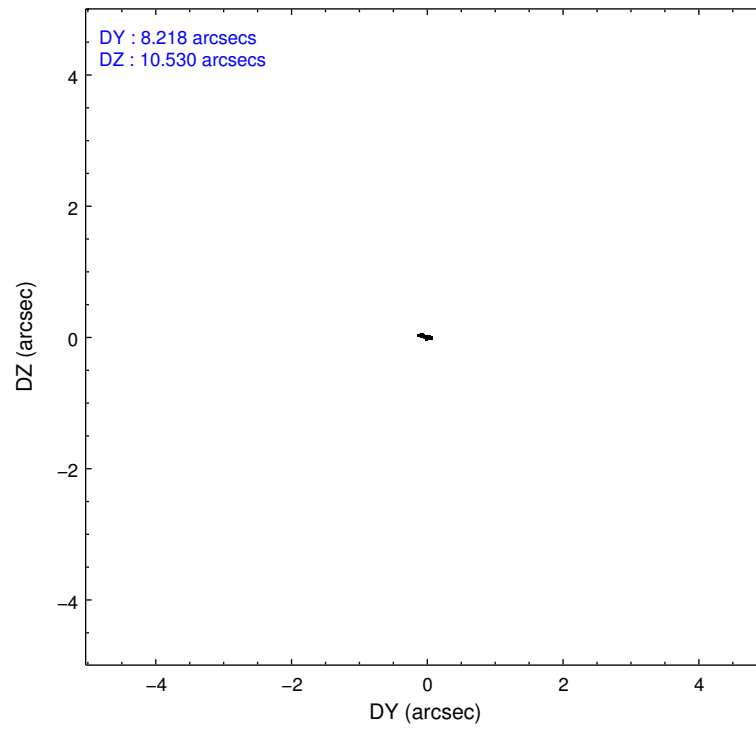
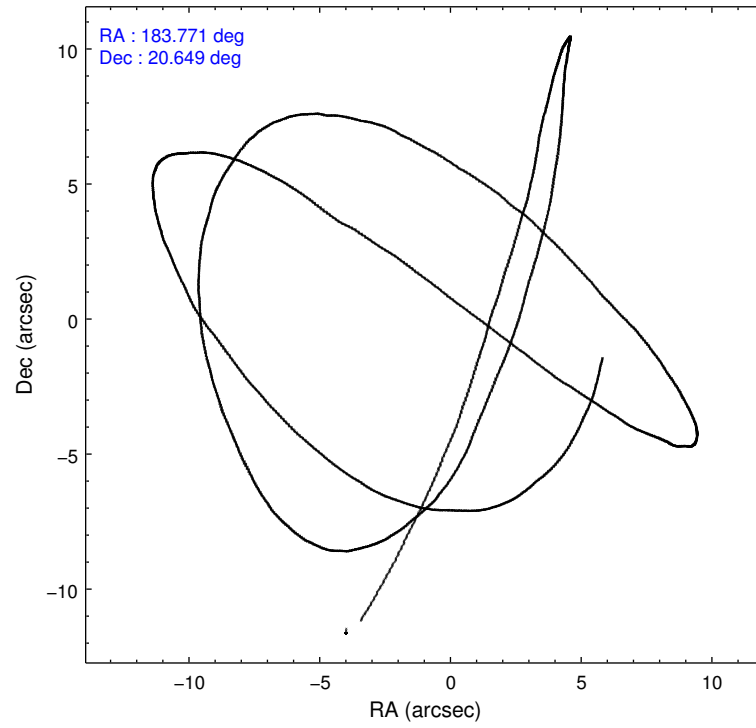
2.1.4 Events

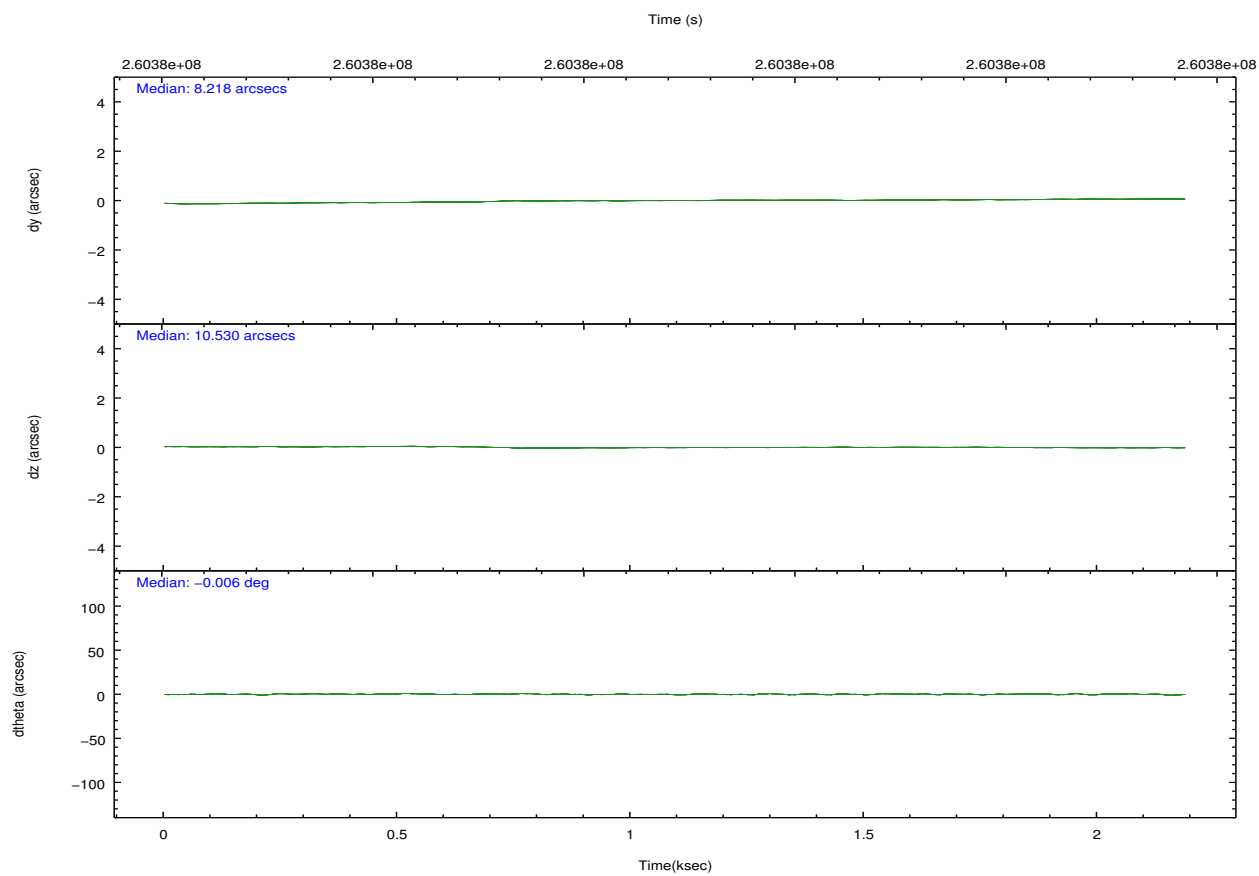
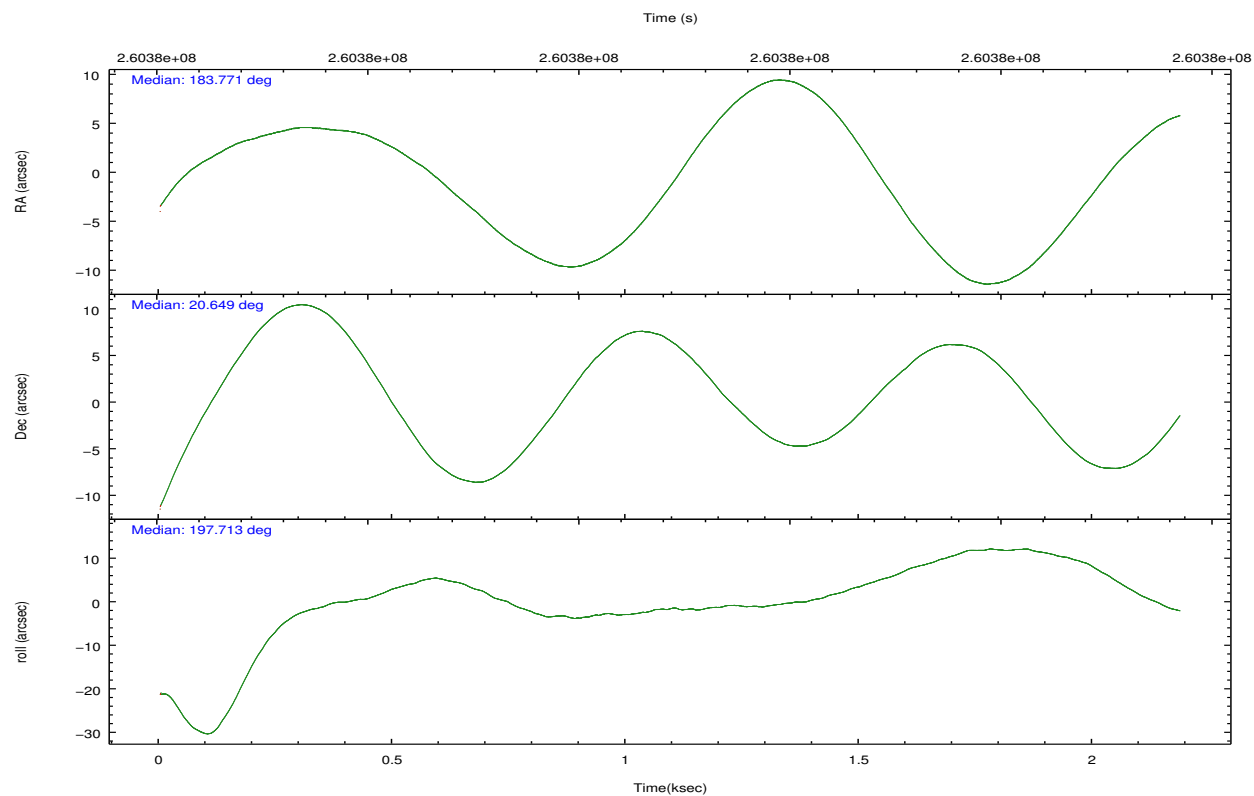
	ccd 2	ccd 3	ccd 5	ccd 6	ccd 7	ccd 8		ccd 2	ccd 3	ccd 5	ccd 6	ccd 7	ccd 8
level 1 events	17699	18731	27915	18620	24909	21623	grade 0 events	988	871	1655	778	891	1418
rejected events	15439	16674	15001	16530	14793	16960		5%	4%	5%	4%	3%	6%
rejected %	87%	89%	53%	88%	59%	78%	grade 1 events	19	11	101	12	26	18
								0%	0%	0%	0%	0%	0%
							grade 2 events	448	422	3775	483	1954	1050
								2%	2%	13%	2%	7%	4%
							grade 3 events	222	192	510	216	875	475
								1%	1%	1%	1%	3%	2%
							grade 4 events	216	208	474	200	874	443
								1%	1%	1%	1%	3%	2%
							grade 5 events	647	841	2196	825	2376	1088
								3%	4%	7%	4%	9%	5%
							grade 6 events	392	373	6540	418	5551	1283
								2%	1%	23%	2%	22%	5%
							grade 7 events	14767	15813	12664	15688	12362	15848
								83%	84%	45%	84%	49%	73%

2.2 Compared Parameters

Parameter	Planned	Actual	Parameter	Planned	Actual
Instrument	ACIS	ACIS	Obspar format version number	7	7
Detector	ACIS-235678	ACIS-235678	Obspar file type	PREDICTED	ACTUAL
Grating	NONE	NONE	Obspar update status	NONE	UPDATED
Data mode	FAINT	FAINT	Number of optional ACIS chips dropped	0	0
Observation mode	POINTING	POINTING	On-chip summing requested	N	N
[deg] Pointing RA	183.790268	183.7710308394809	Subarray requested	NONE	NONE
[deg] Pointing Dec	20.669605	20.64910140583094	Alternating exposures requested	N	N
[deg] Pointing Roll	197.554215	197.7176913283218	[s] Primary exposure time	0.000000	3.2
[mm] SIM focus pos	-0.684267	-0.6828225247311905			
[mm] SIM defocus	0	0.001444936568705701			
[mm] SIM translation stage pos	-190.132523	-190.1425803651734			
[mm] SIM translation stage offset	0	0.01005778216563158			
[s] Observation start time (MET)	260375309.184000	260374320.79595			
Observation start date	2006-04-02T14:27:24	2006-04-02T14:12:00			
[s] Observation end time (MET)	260377309.184000	260378209.13363			
Observation end date	2006-04-02T15:00:44	2006-04-02T15:16:49			
Read mode	TIMED	TIMED			

2.3 Aspect



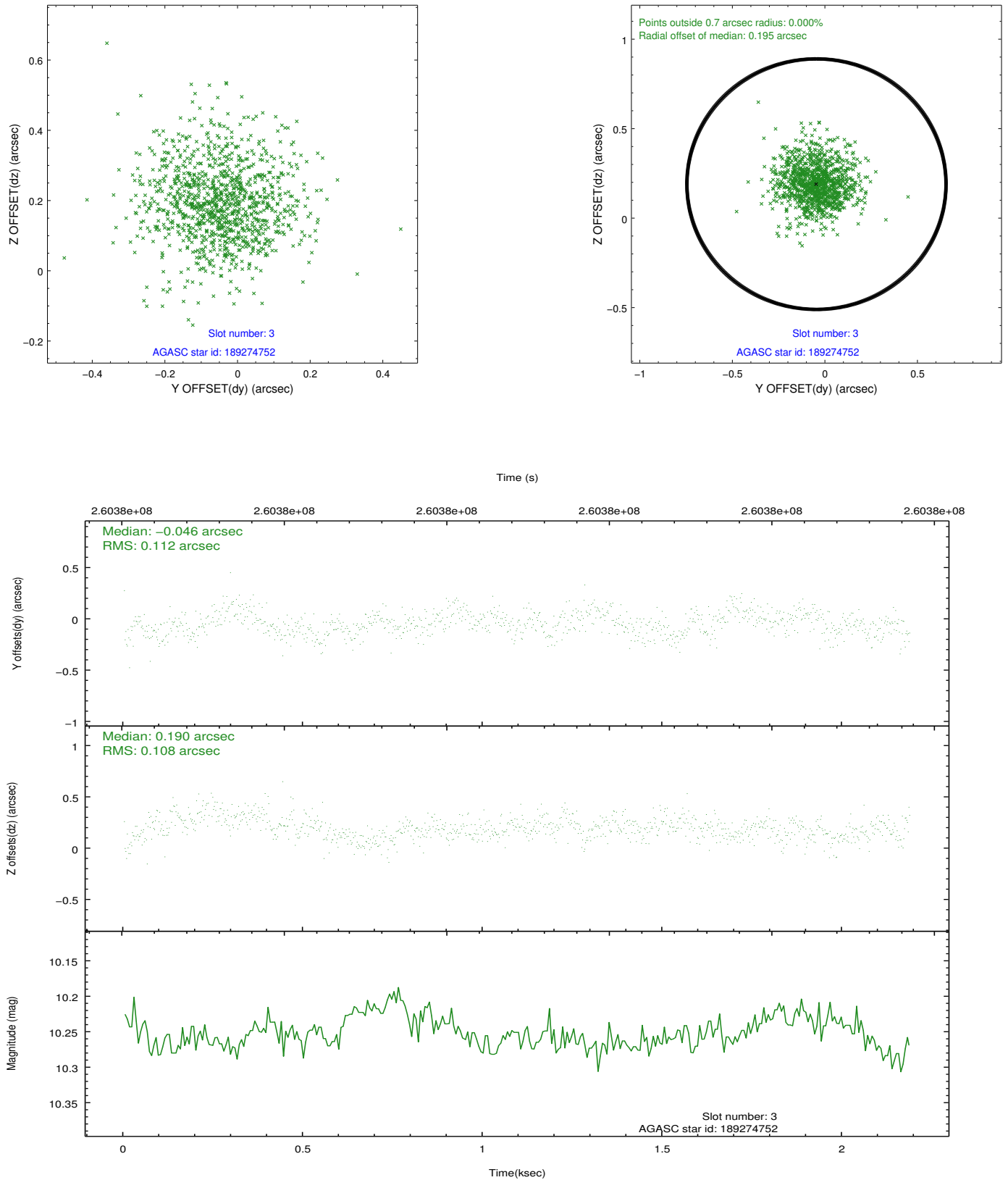


Slot Statistics

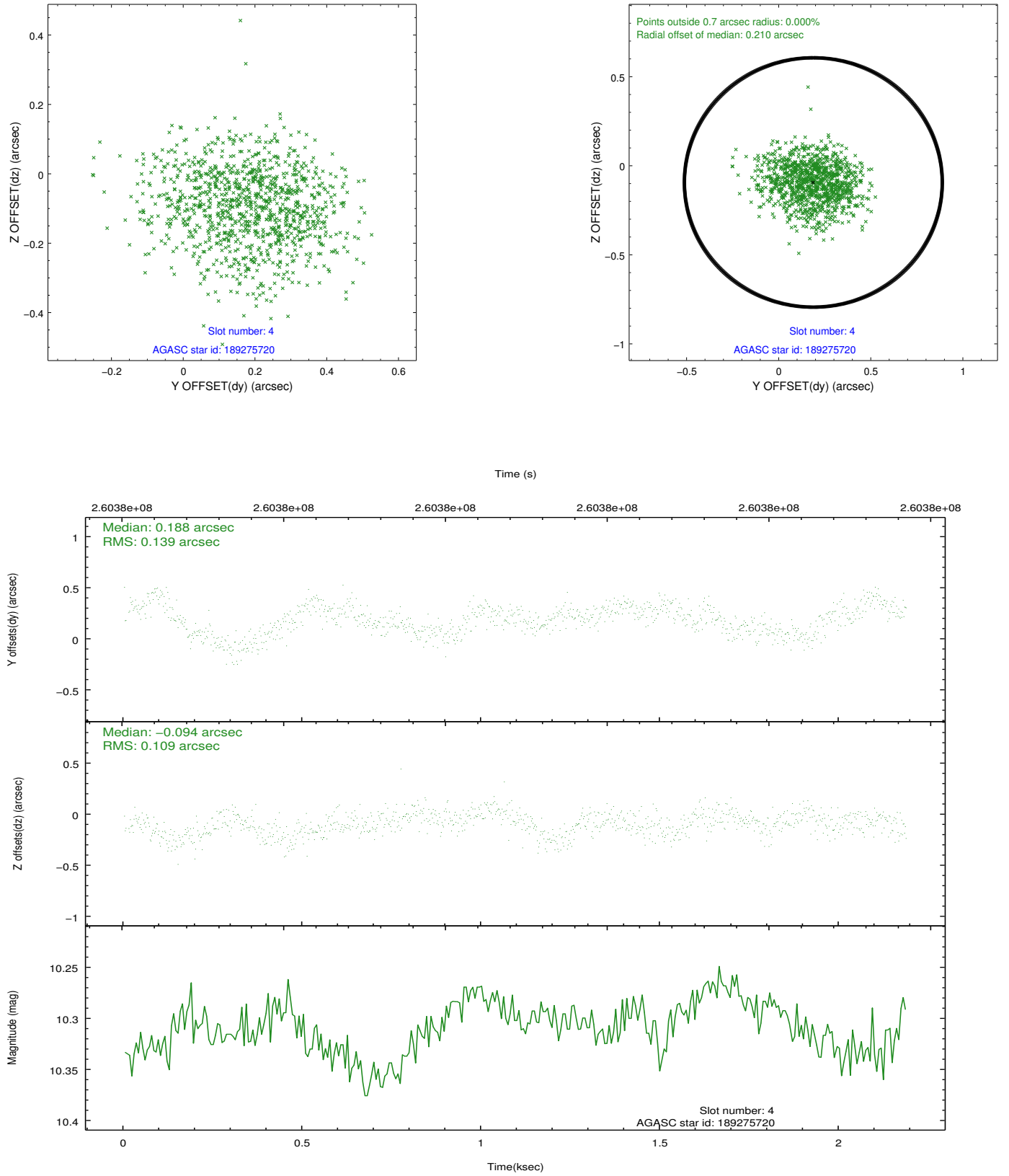
slot	status	id	mag	n_pts	med_dy	med_dz	dr1	dr2	ra	dec	mean_y	mean_z
0	FID	ACIS-S-2	7.10	533	-0.046	-0.027	0.006	0.010	0.000000	0.000000	-760.98	-1731.79
1	FID	ACIS-S-4	7.21	534	0.141	0.029	0.006	0.010	0.000000	0.000000	2151.07	173.74
2	FID	ACIS-S-5	7.23	533	-0.127	0.006	0.007	0.011	0.000000	0.000000	-1810.12	170.68
3	GUIDE	189274752	10.25	1064	-0.046	0.190	0.165	0.272	183.166381	20.521732	2165.23	-130.36
4	GUIDE	189275720	10.31	1062	0.188	-0.094	0.191	0.299	183.928869	20.680286	-453.99	103.65
5	GUIDE	189676152	9.78	1063	-0.187	-0.033	0.119	0.202	184.404471	20.669670	-1973.43	620.15
6	GUIDE	189677376	9.40	1065	0.259	-0.087	0.147	0.209	184.504065	20.420915	-2028.85	1575.20
7	GUIDE	189275992	8.38	1066	-0.189	0.032	0.079	0.122	183.233512	21.213393	1188.79	-2431.64

2.4 Star Slots

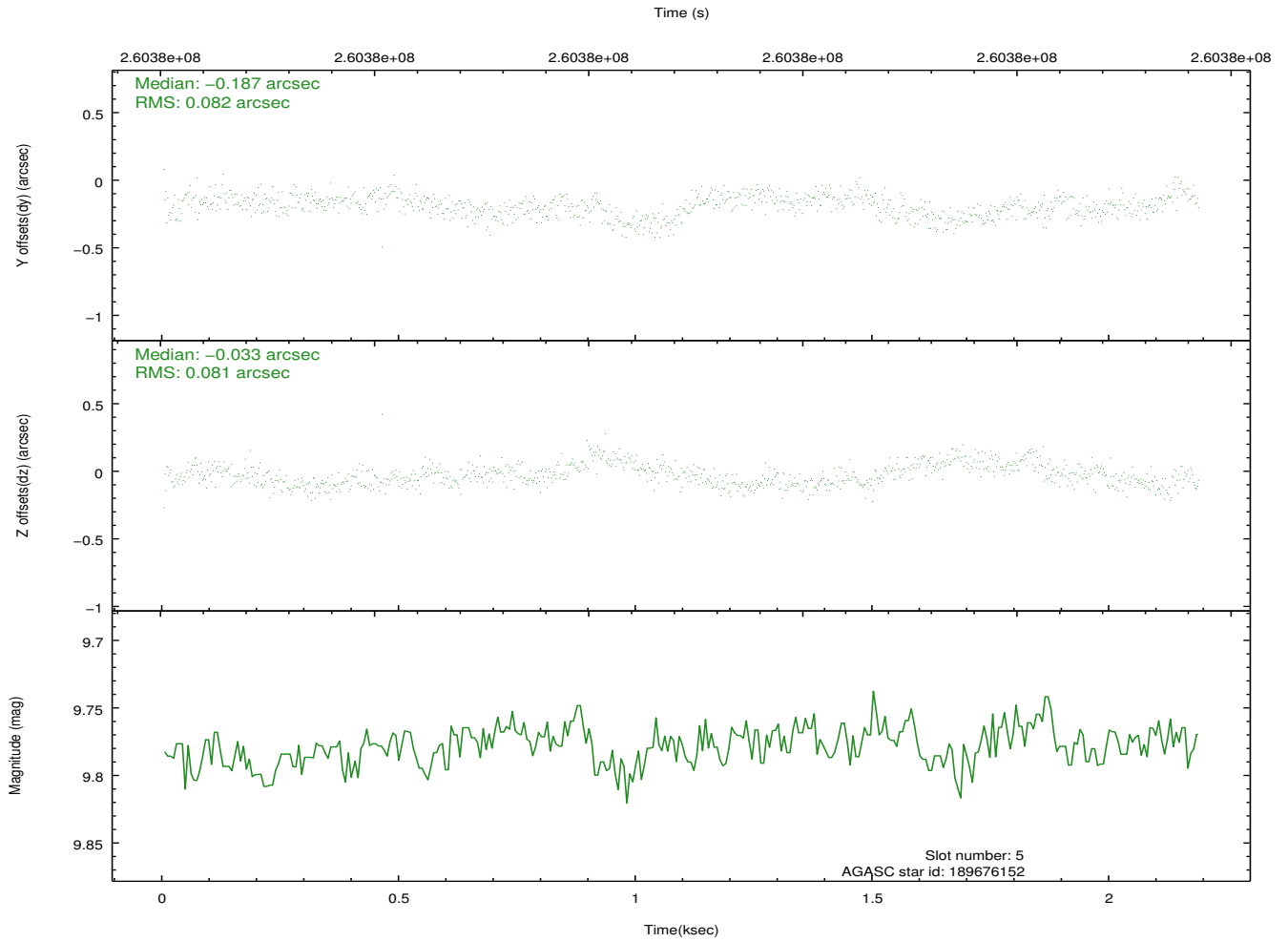
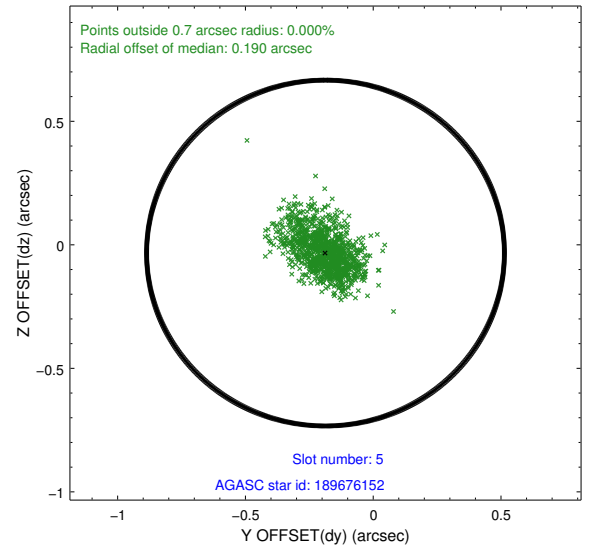
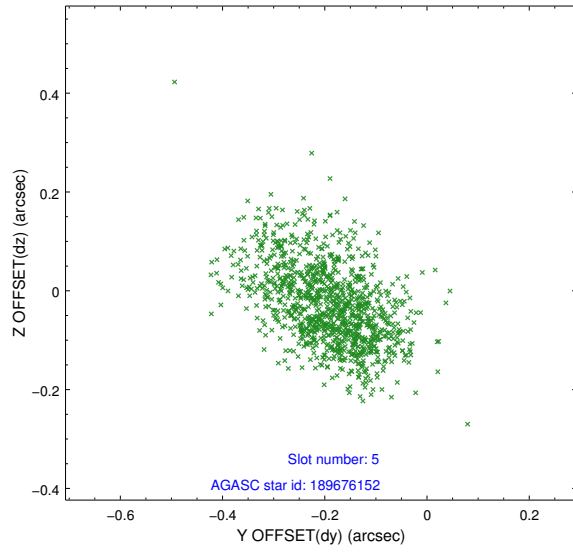
2.4.1 Slot 3



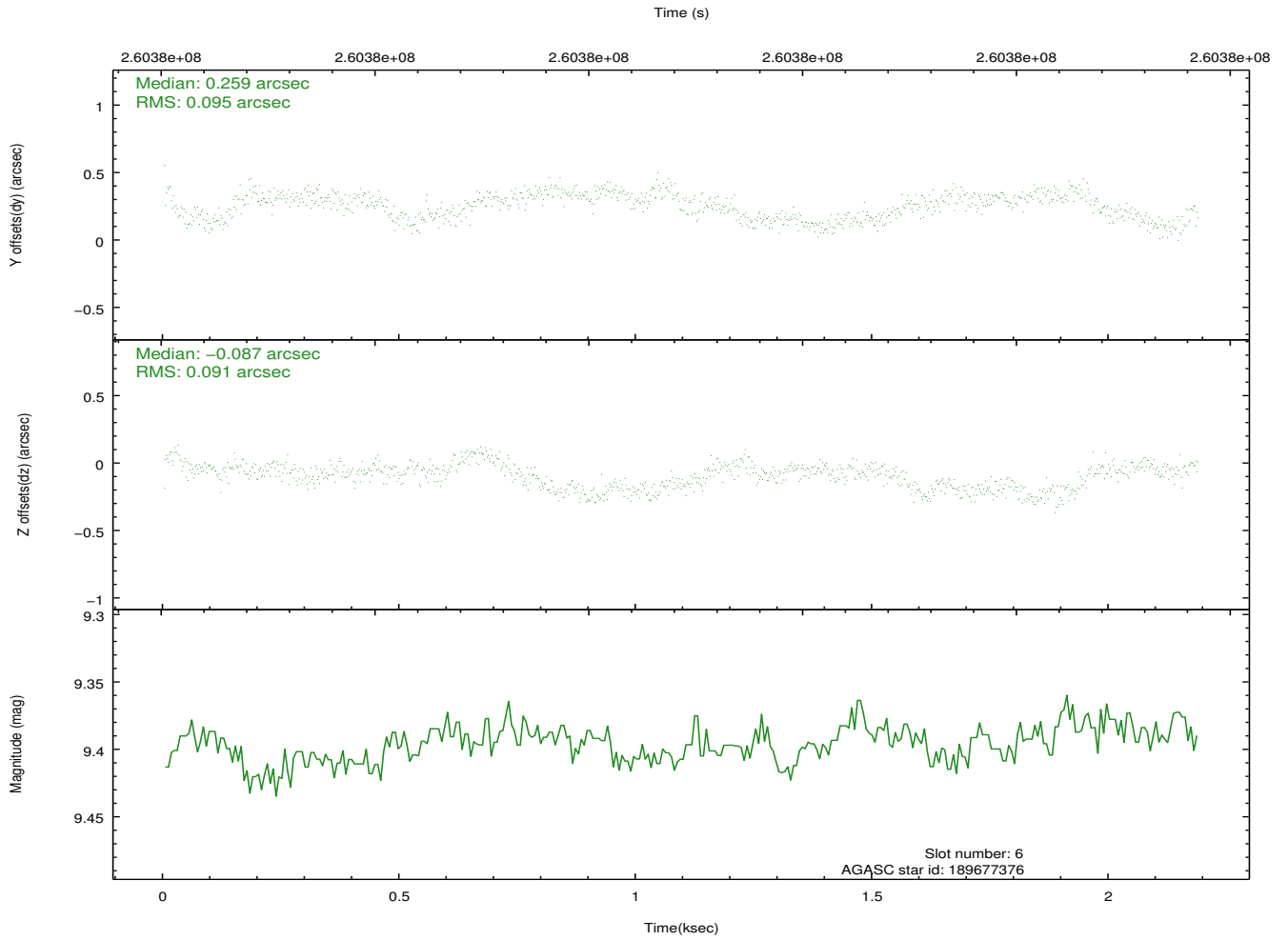
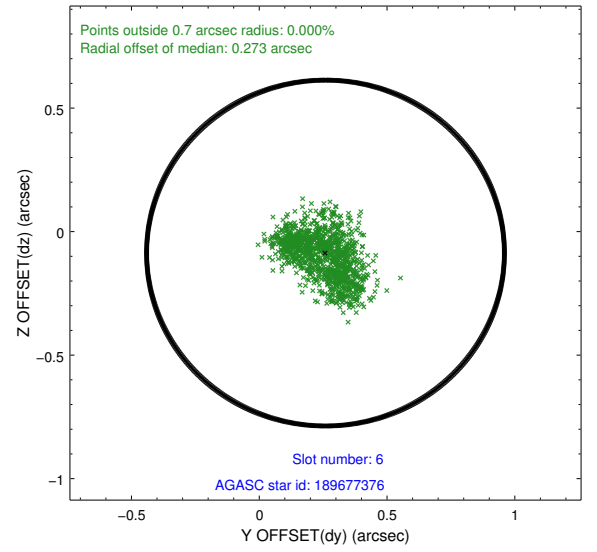
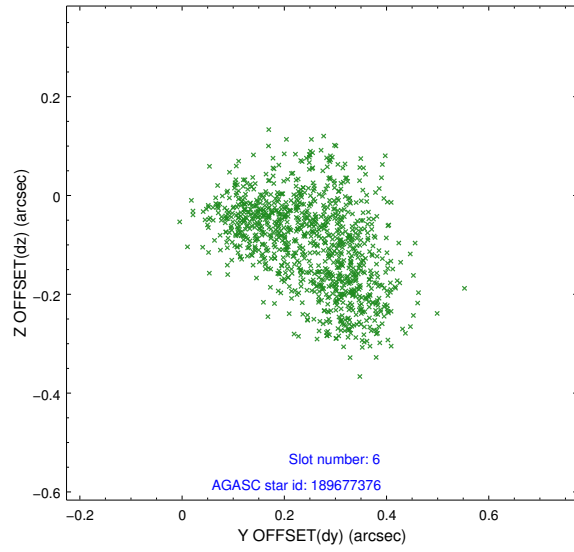
2.4.2 Slot 4



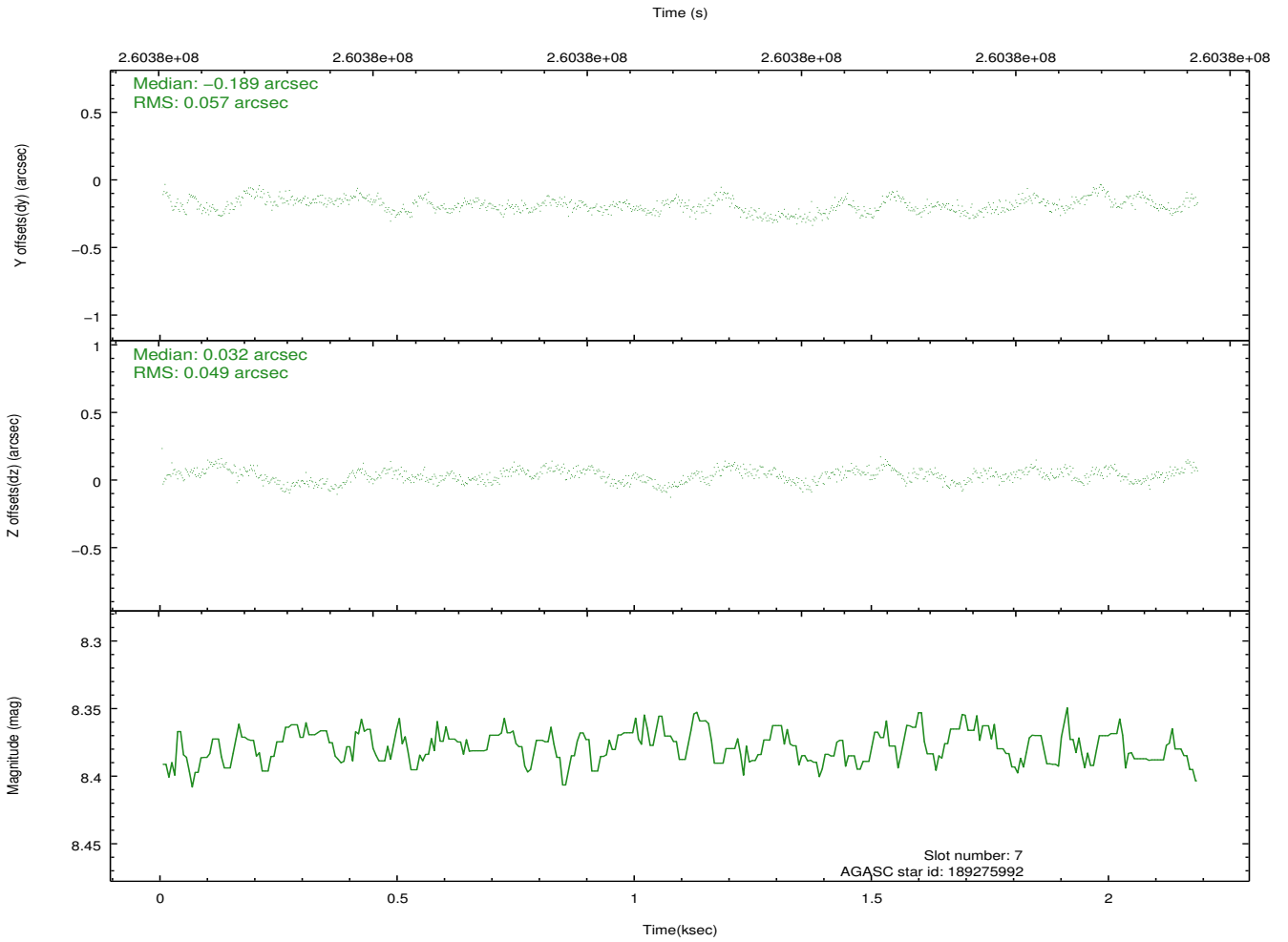
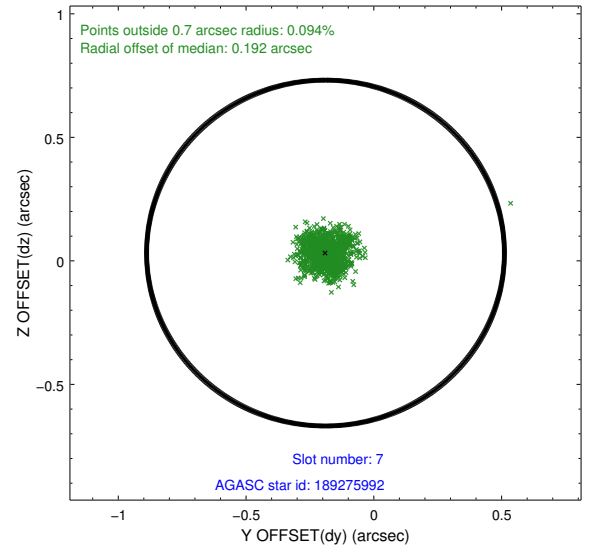
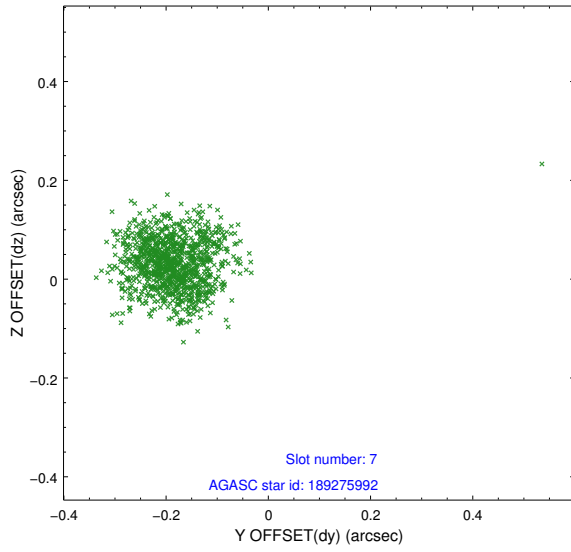
2.4.3 Slot 5



2.4.4 Slot 6

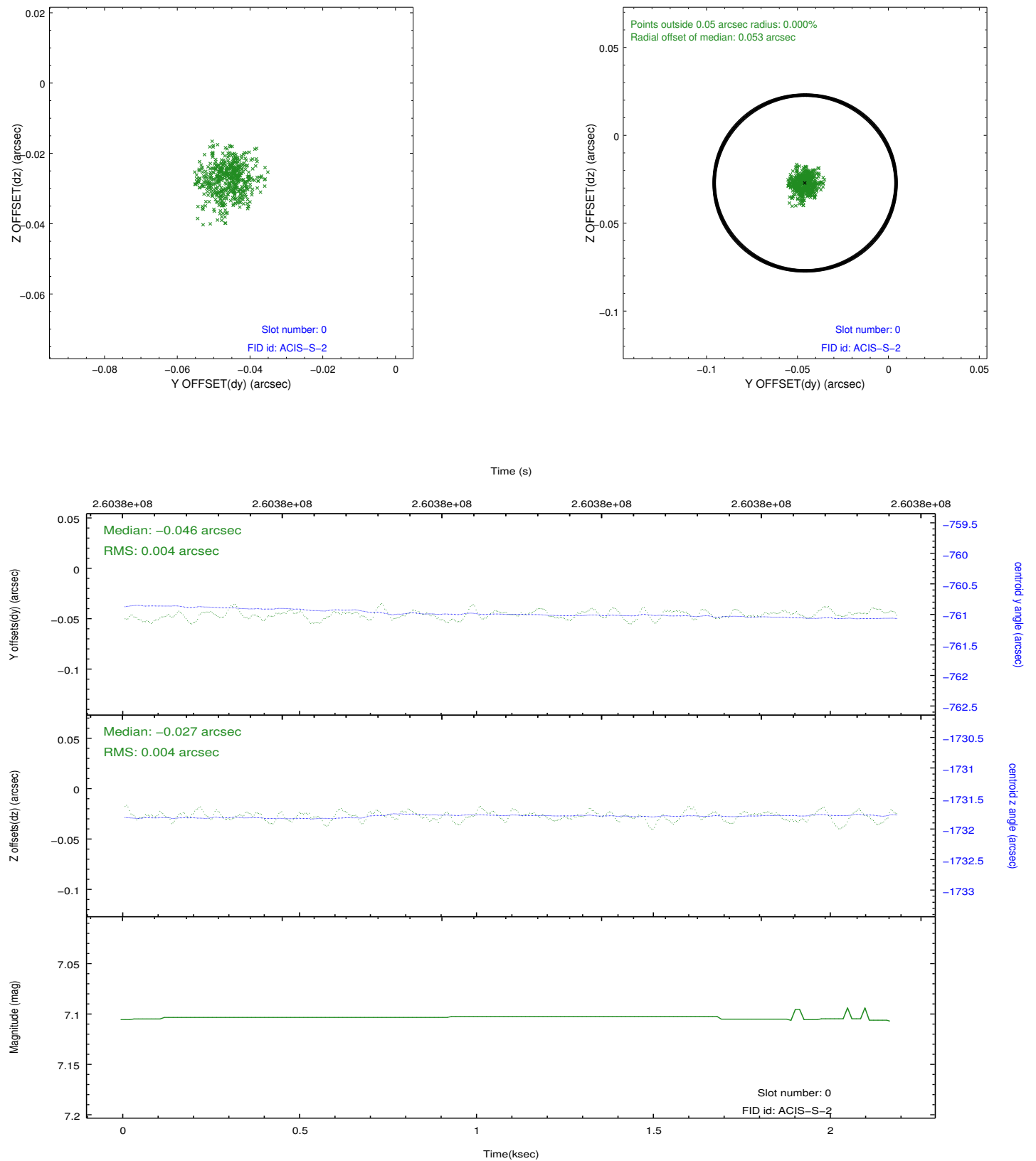


2.4.5 Slot 7

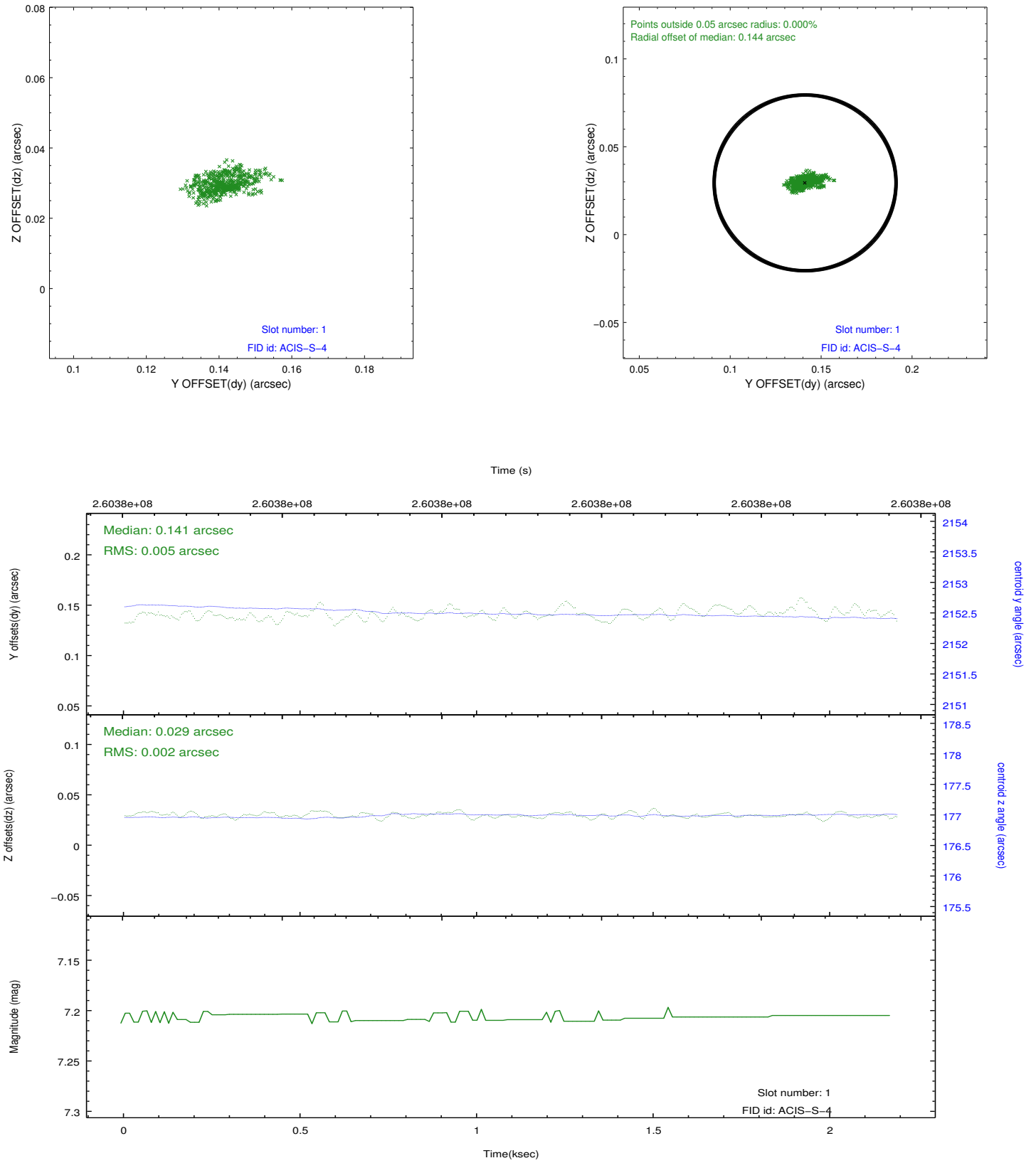


2.5 FID Slots

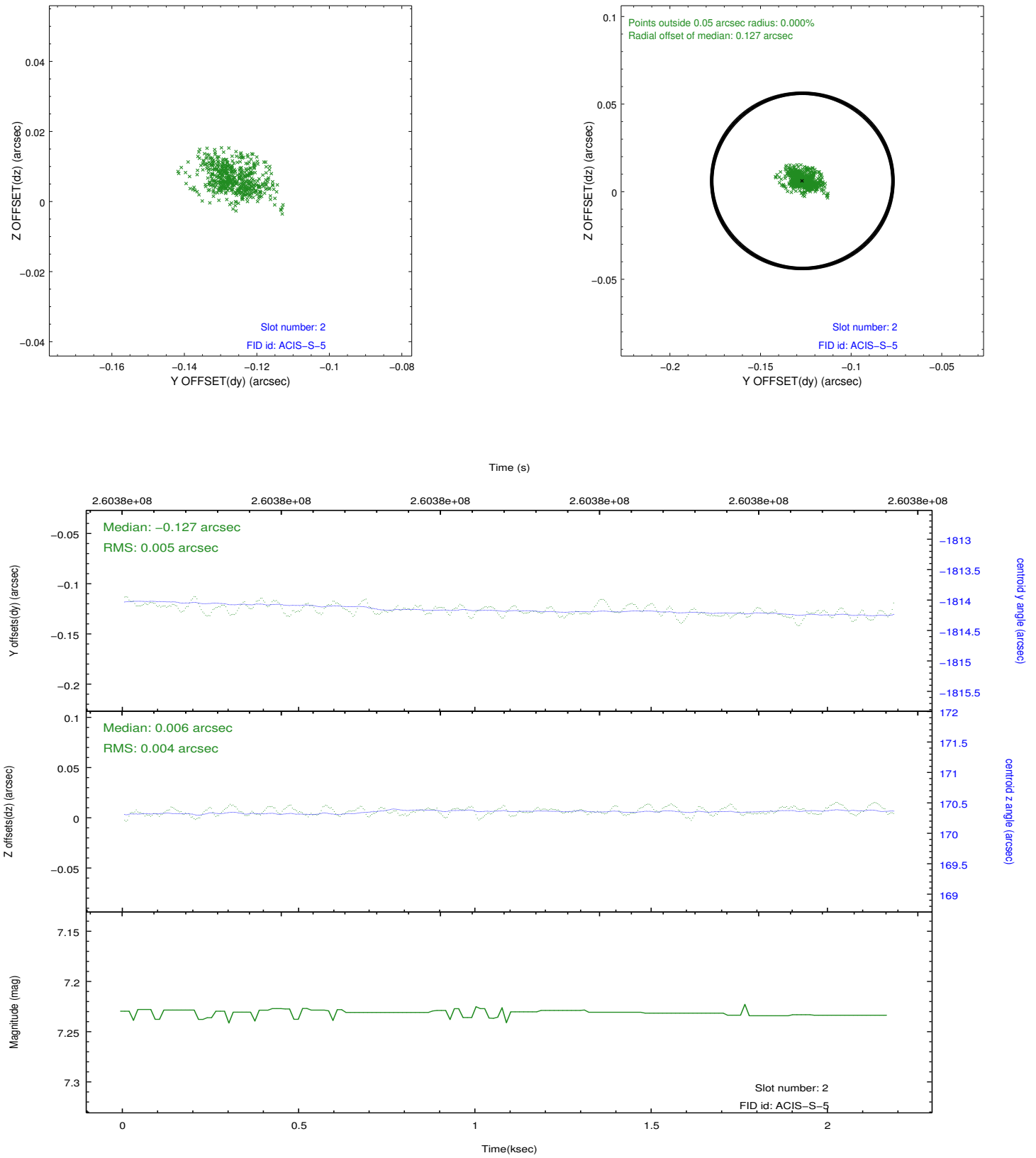
2.5.1 Slot 0



2.5.2 Slot 1



2.5.3 Slot 2



A Summary

A.1 Status

V&V Scientist	Jen Lauer
V&V Date (YYYY-MM-DD)	2012.03.30
V&V Edition	1
V&V Disposition and Status	OK
V&V Charge Time	2.00959999

A.2 Comments