

V&V Reference Report

L2 ASCDS Version : 8.4.3.1

Observation 7012 - L2 Version 2
Chandra X-Ray Center

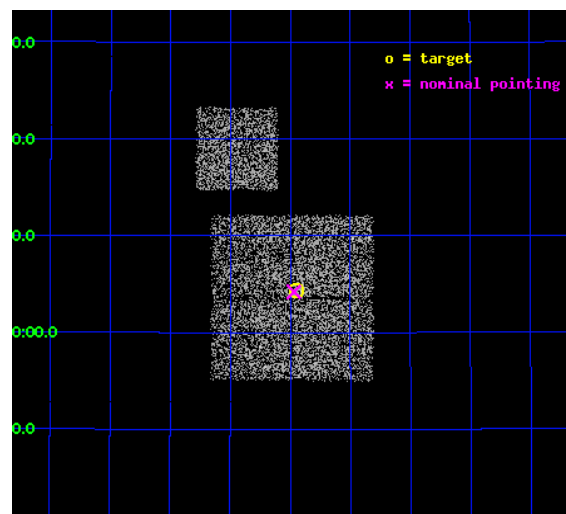
L2 Processing Date : Apr 12 2012

Contents

1	Front	2
2	OBI	3
2.1	OBI	3
2.1.1	Images	3
2.1.2	Bias	3
2.1.3	Parameters	4
2.1.4	Events	4
2.2	Compared Parameters	5
2.3	Aspect	6
2.4	Star Slots	9
2.4.1	Slot 3	9
2.4.2	Slot 4	10
2.4.3	Slot 5	11
2.4.4	Slot 6	12
2.4.5	Slot 7	13
2.5	FID Slots	14
2.5.1	Slot 0	14
2.5.2	Slot 1	15
2.5.3	Slot 2	16
A	Summary	17
A.1	Status	17
A.2	Comments	17

1 Front

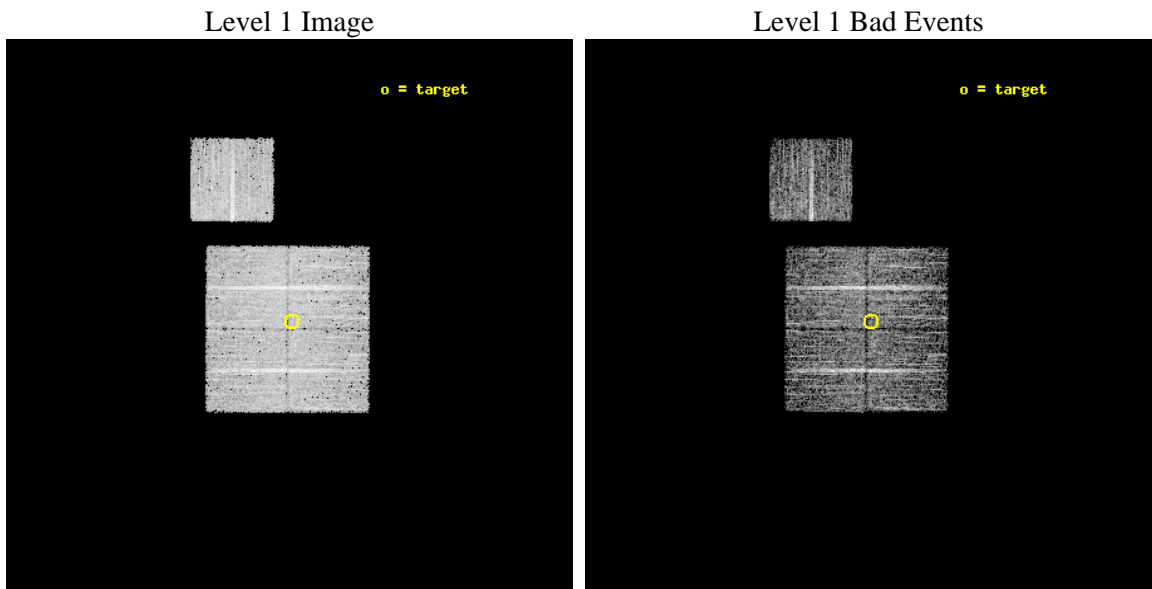
seq_num	900428	Sequence number
obs_id	7012	Observation id
title	Chandra Large Scale Survey of the NOAO Bootes Deep Field (B)	Propo
observer	Dr. Stephen Murray	Principal investigator
object	Bootes2 2B	Source name
dtcycle	0	
cycle	P	events from which exps? Prim/Second/Both
ra_targ	218.237308	Observer's specified target RA [deg]
dec_targ	33.071947	Observer's specified target Dec [deg]
ra_nom	218.24238887971	Nominal RA [deg]
dec_nom	33.070089531614	Nominal Dec [deg]
roll_nom	0.20589310489012	Nominal Roll [deg]
revision	2	Processing version of data
ontime	4776.4042571783	Sum of GTIs [s]
livetime	4713.9970192206	Livetime [s]
ontime0	4776.2811371684	Sum of GTIs [s]
ontime1	4776.3221472502	Sum of GTIs [s]
ontime2	4776.3631872535	Sum of GTIs [s]
ontime3	4776.4042571783	Sum of GTIs [s]
ontime6	4776.2400672436	Sum of GTIs [s]
l2events	13766	Number of level 2 events



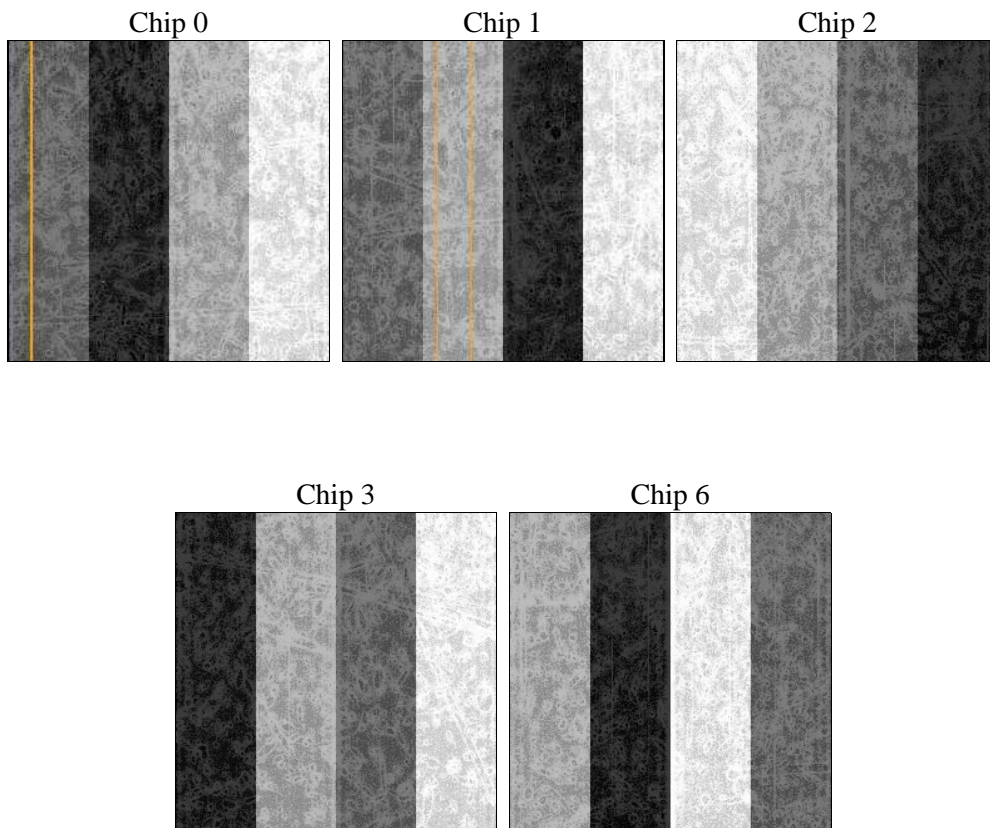
2 OBI

2.1 OBI

2.1.1 Images



2.1.2 Bias



2.1.3 Parameters

obi_num	0	Obi number	sched_exp_time	5000.000000	[s] Scheduled observation exposure time
ascdsver	8.4.3.1	Processing system revision	ontime	4776.4042571783	Sum of GTIs [s]
caldsver	4.4.9	 	ontime0	4776.2811371684	Sum of GTIs [s]
date	2012-04-12T23:10:50	Date and time of file creation	ontime1	4776.3221472502	Sum of GTIs [s]
revision	2	Processing version of data	ontime2	4776.3631872535	Sum of GTIs [s]
			ontime3	4776.4042571783	Sum of GTIs [s]
			ontime6	4776.2400672436	Sum of GTIs [s]
			l1events	169624	Number of level 1 events

2.1.4 Events

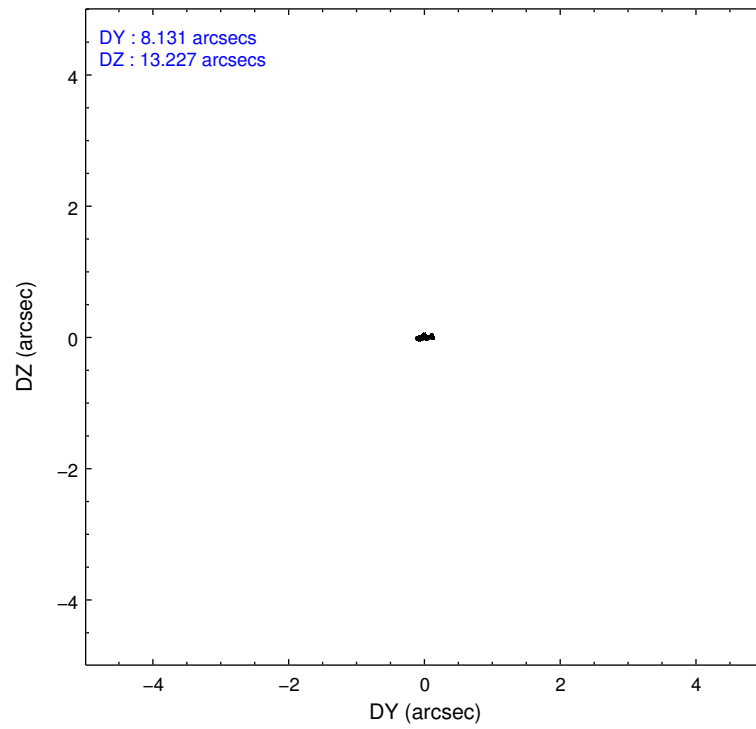
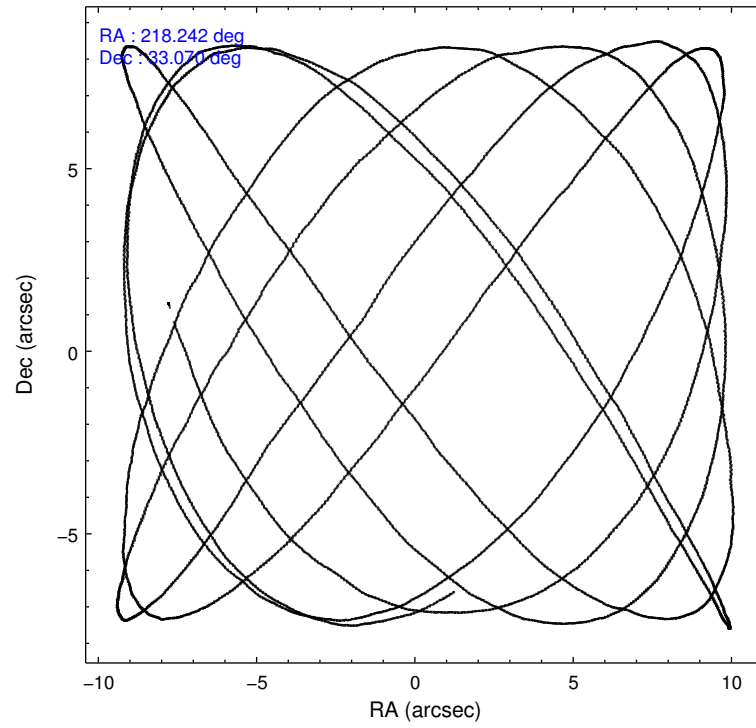
	ccd 0	ccd 1	ccd 2	ccd 3	ccd 6
level 1 events	32460	31931	36460	34565	34208
rejected events	29074	28406	33216	31254	30805
rejected %	89%	88%	91%	90%	90%

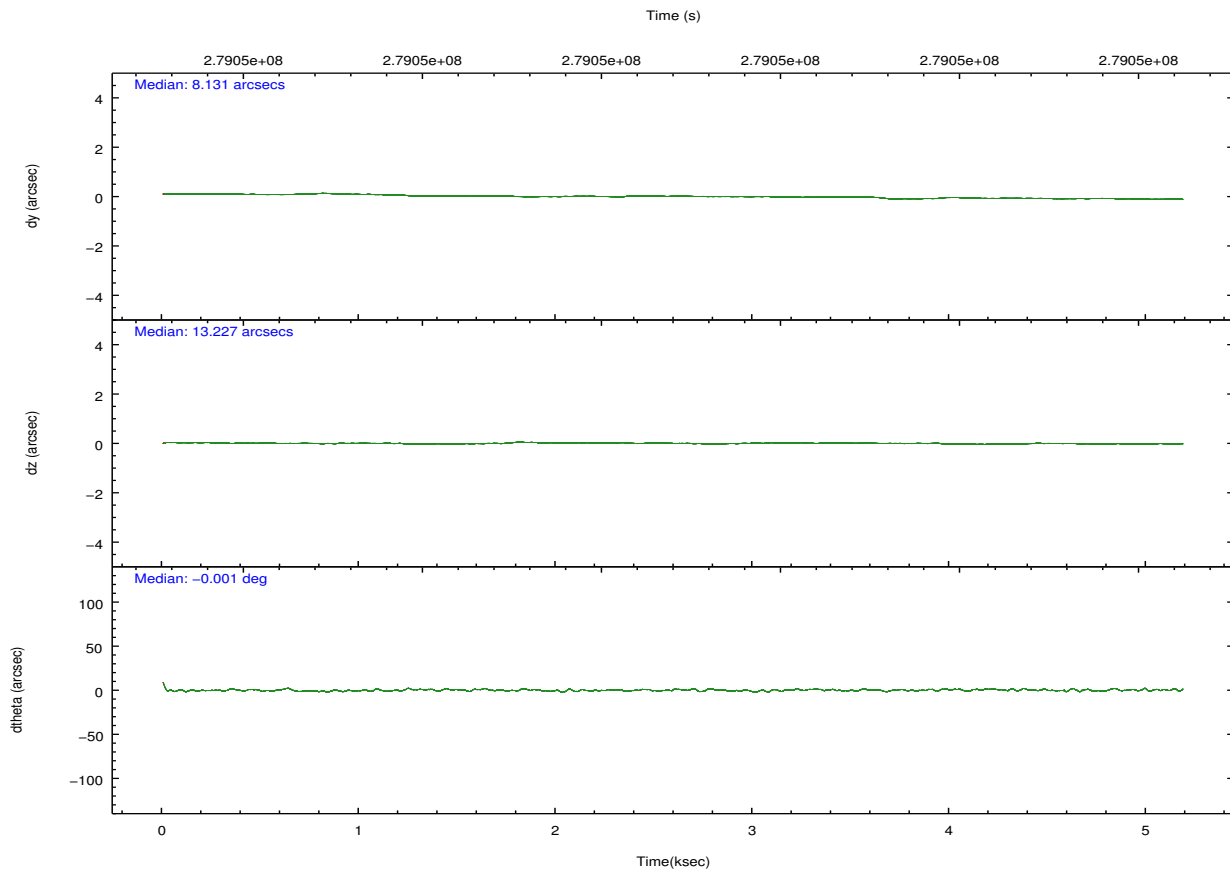
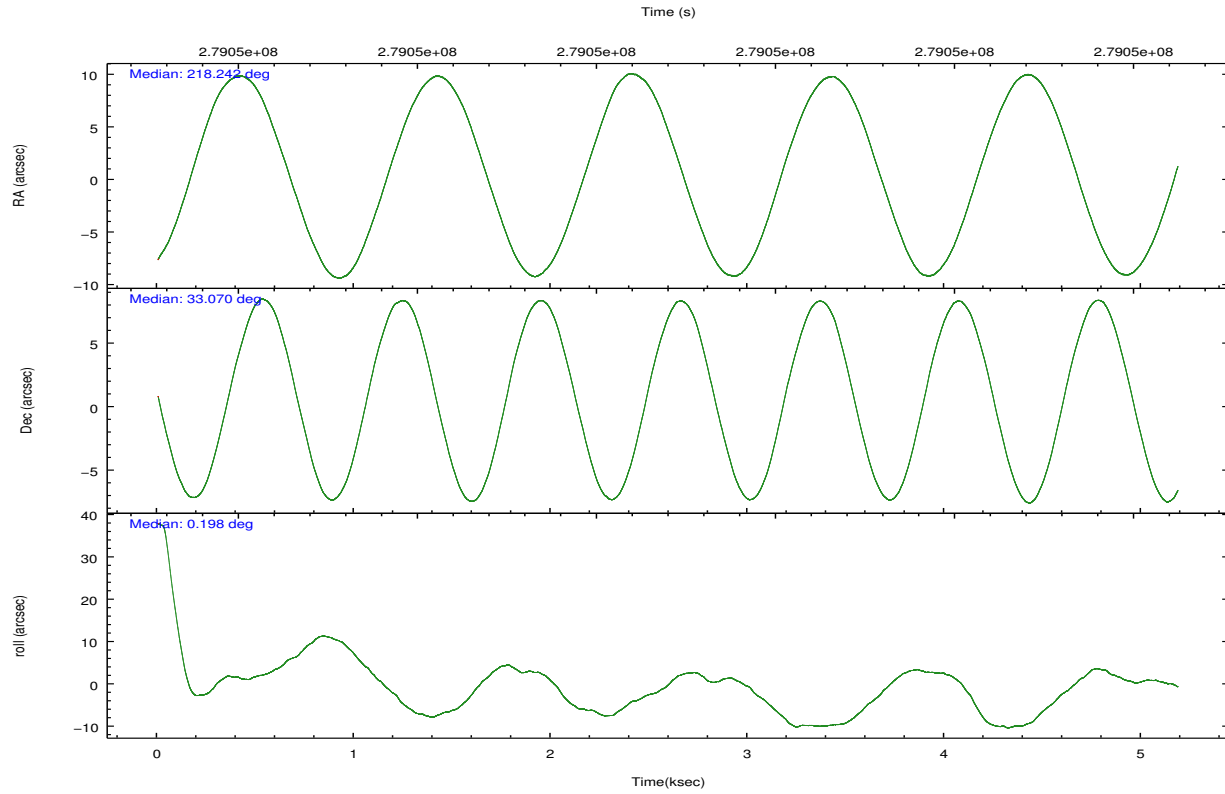
	ccd 0	ccd 1	ccd 2	ccd 3	ccd 6
grade 0 events	1228	1248	1188	1255	1248
	3%	3%	3%	3%	3%
grade 1 events	22	20	20	23	15
	0%	0%	0%	0%	0%
grade 2 events	800	812	770	717	742
	2%	2%	2%	2%	2%
grade 3 events	407	402	359	385	359
	1%	1%	0%	1%	1%
grade 4 events	377	389	341	383	392
	1%	1%	0%	1%	1%
grade 5 events	927	1096	960	1200	1099
	2%	3%	2%	3%	3%
grade 6 events	575	676	588	572	665
	1%	2%	1%	1%	1%
grade 7 events	28124	27288	32234	30030	29688
	86%	85%	88%	86%	86%

2.2 Compared Parameters

Parameter	Planned	Actual	Parameter	Planned	Actual
Instrument	ACIS	ACIS	Obspar format version number	7	7
Detector	ACIS-01236	ACIS-01236	Obspar file type	PREDICTED	ACTUAL
Grating	NONE	NONE	Obspar update status	NONE	UPDATED
Data mode	VFAINT	VFAINT	Number of optional ACIS chips dropped	0	0
Observation mode	POINTING	POINTING	On-chip summing requested	N	N
[deg] Pointing RA	218.214245	218.2423888797134	Subarray requested	NONE	NONE
[deg] Pointing Dec	33.056275	33.07008953161399	Alternating exposures requested	N	N
[deg] Pointing Roll	0.012575	0.2058931048901176	[s] Primary exposure time	0.000000	3.1
[mm] SIM focus pos	-0.782348	-0.7809083437167272			
[mm] SIM defocus	0	0.001439871863259334			
[mm] SIM translation stage pos	-233.592463	-233.5874344608287			
[mm] SIM translation stage offset	0	-0.005018542100998502			
[s] Observation start time (MET)	279048000.184000	279047624.07112			
Observation start date	2006-11-04T17:18:55	2006-11-04T17:13:44			
[s] Observation end time (MET)	279053000.184000	279053133.95888			
Observation end date	2006-11-04T18:42:15	2006-11-04T18:45:33			
Read mode	TIMED	TIMED			

2.3 Aspect



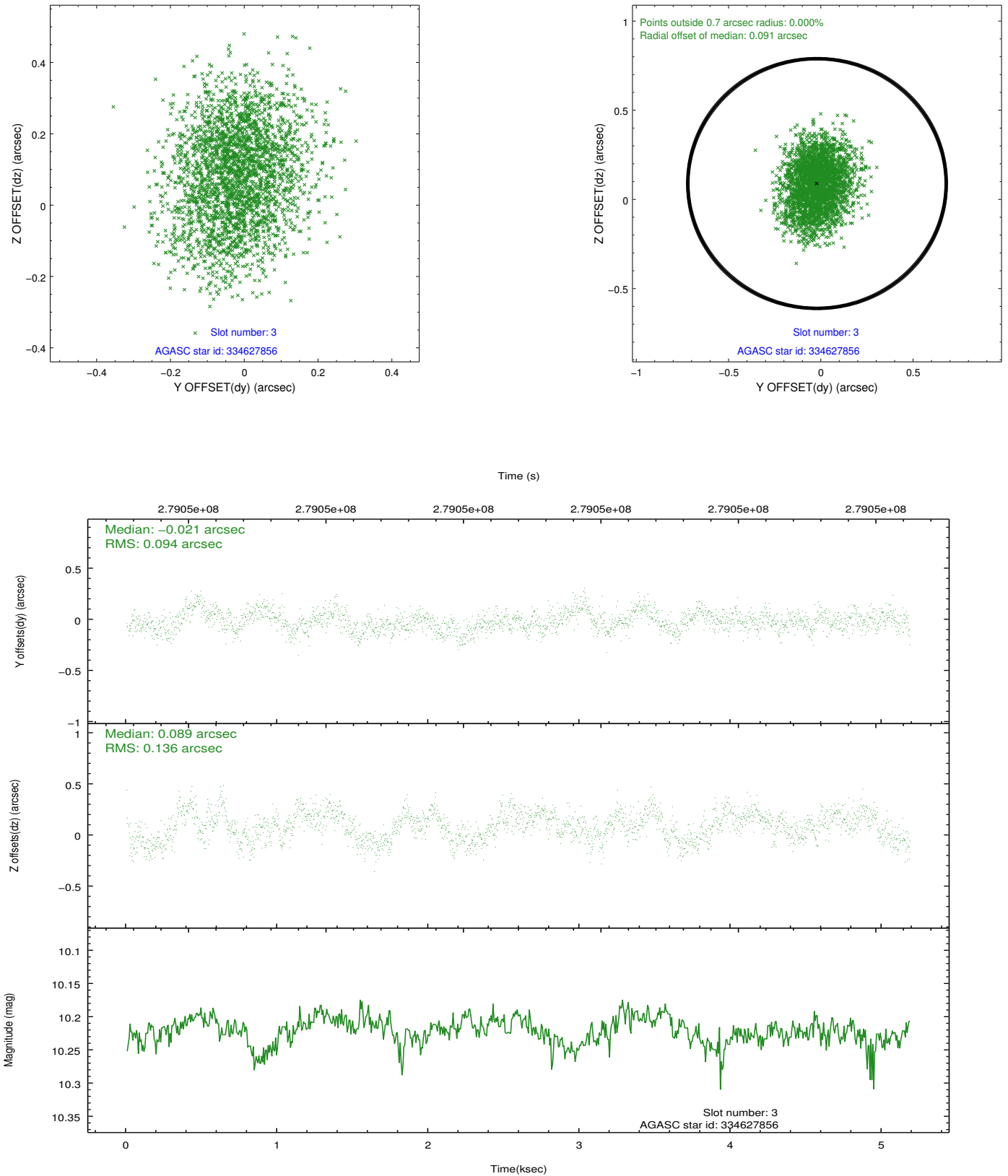


Slot Statistics

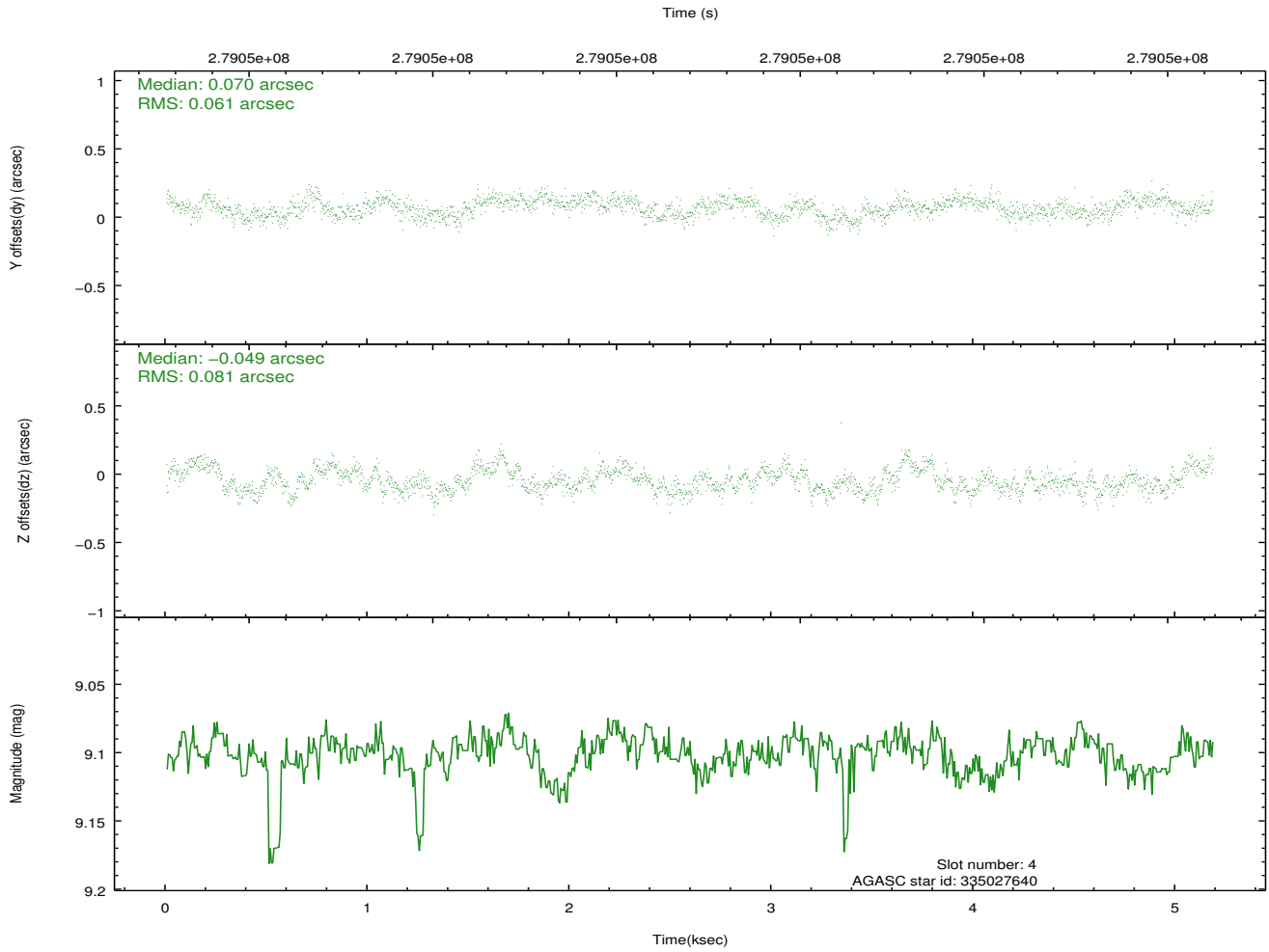
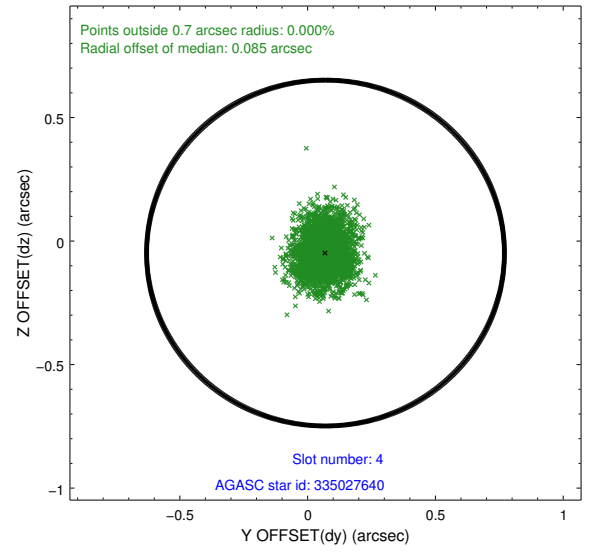
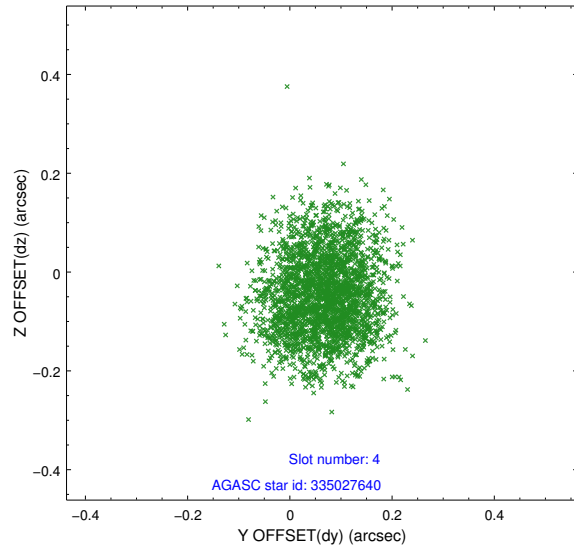
slot	status	id	mag	n_pts	med_dy	med_dz	dr1	dr2	ra	dec	mean_y	mean_z
0	FID	ACIS-I-1	7.24	1265	-0.053	0.059	0.009	0.016	0.000000	0.000000	931.44	-836.74
1	FID	ACIS-I-2	7.14	1265	-0.156	-0.089	0.007	0.012	0.000000	0.000000	-762.10	-843.88
2	FID	ACIS-I-4	7.19	1265	0.110	0.098	0.008	0.014	0.000000	0.000000	2151.01	1062.48
3	GUIDE	334627856	10.22	2516	-0.021	0.089	0.177	0.283	217.544668	32.407167	-2035.07	-2329.49
4	GUIDE	335027640	9.10	2526	0.070	-0.049	0.108	0.172	218.092211	33.193770	-367.85	494.67
5	GUIDE	335029384	8.50	2529	0.023	-0.207	0.083	0.130	217.848061	33.088477	-1103.93	118.11
6	GUIDE	335029528	10.38	2466	0.008	0.009	0.191	0.315	218.786422	33.290416	1722.30	847.85
7	GUIDE	335030712	6.54	2528	-0.083	0.158	0.106	0.165	218.548784	32.534479	1017.05	-1876.01

2.4 Star Slots

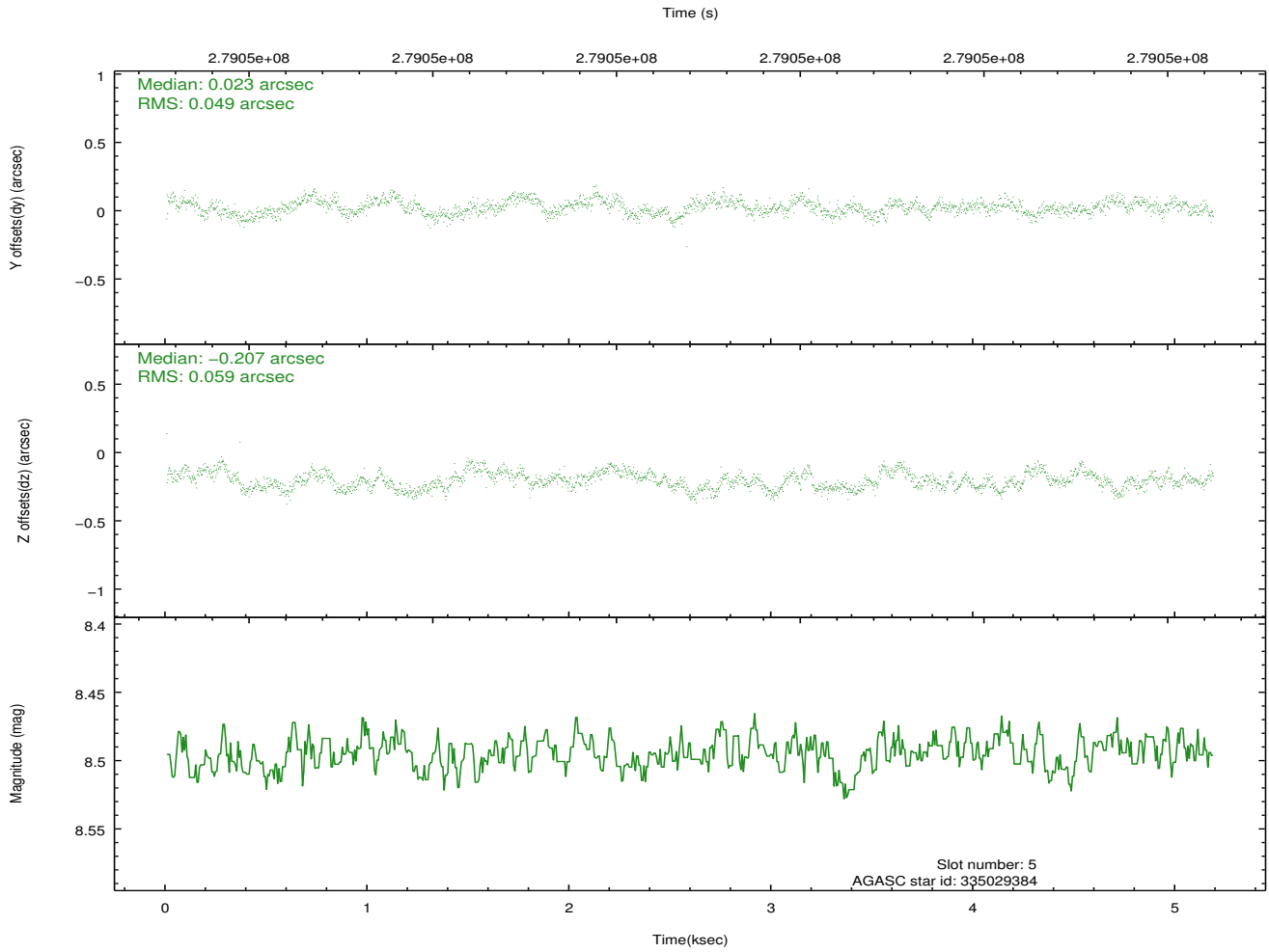
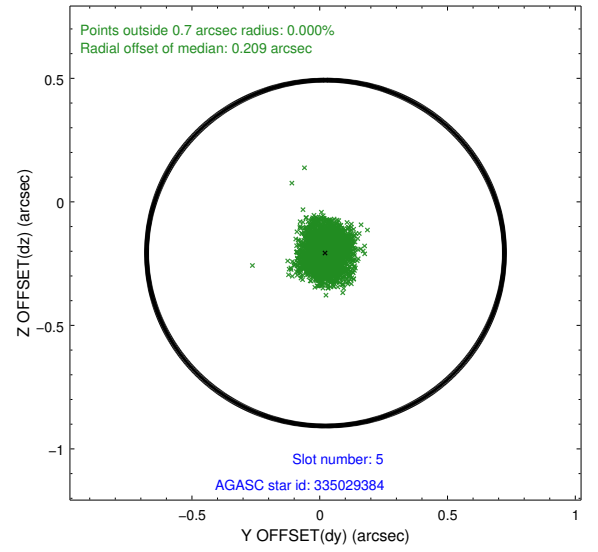
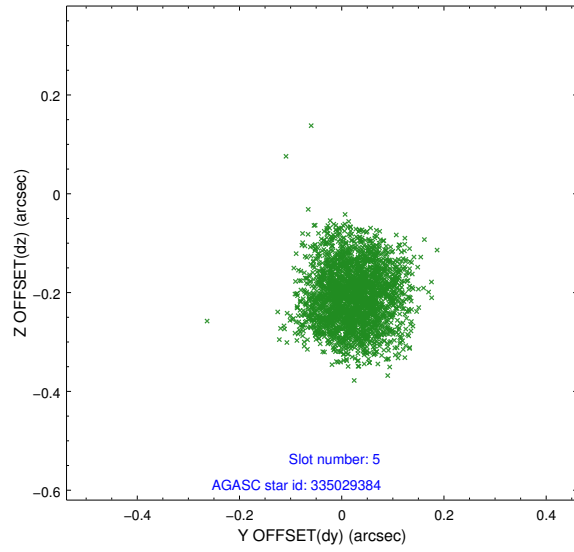
2.4.1 Slot 3



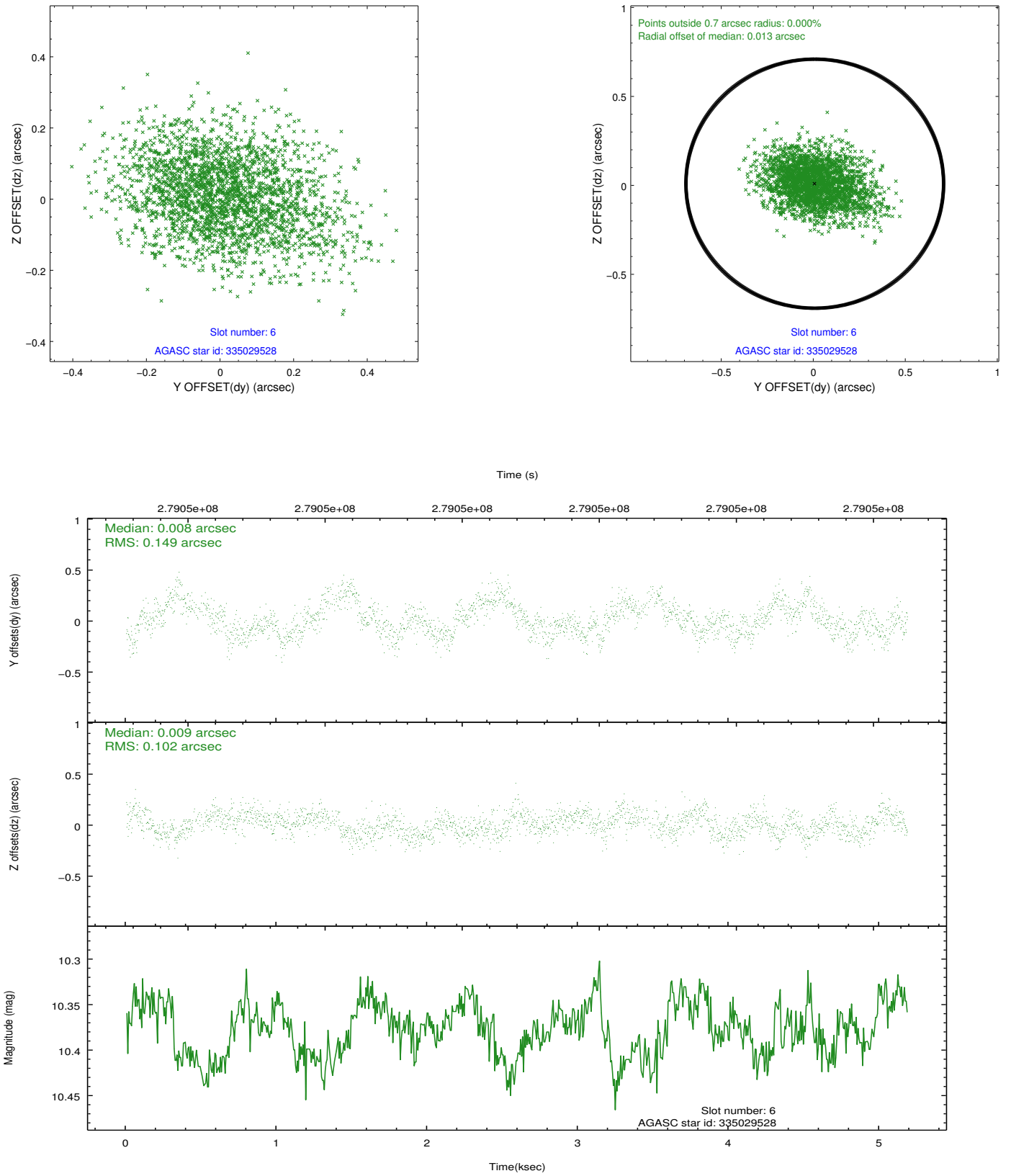
2.4.2 Slot 4



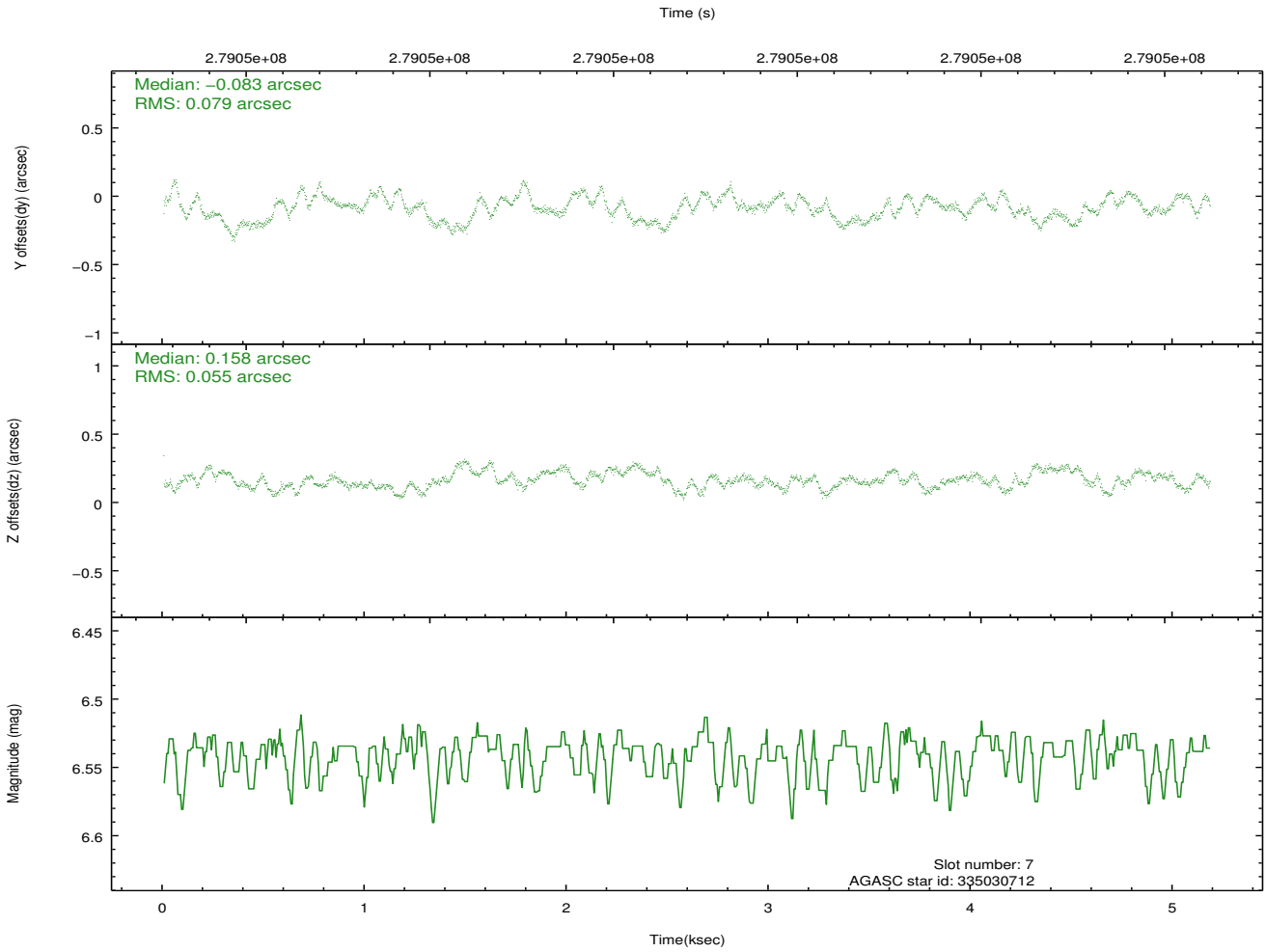
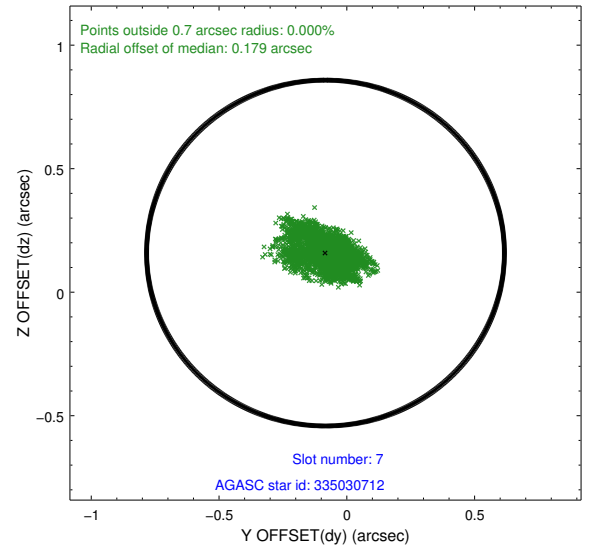
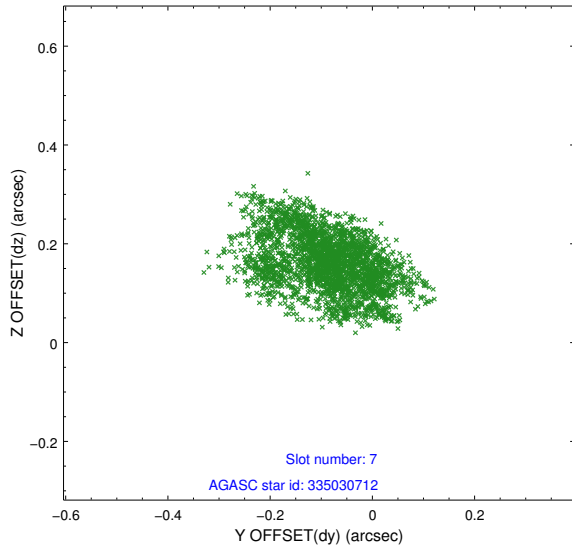
2.4.3 Slot 5



2.4.4 Slot 6

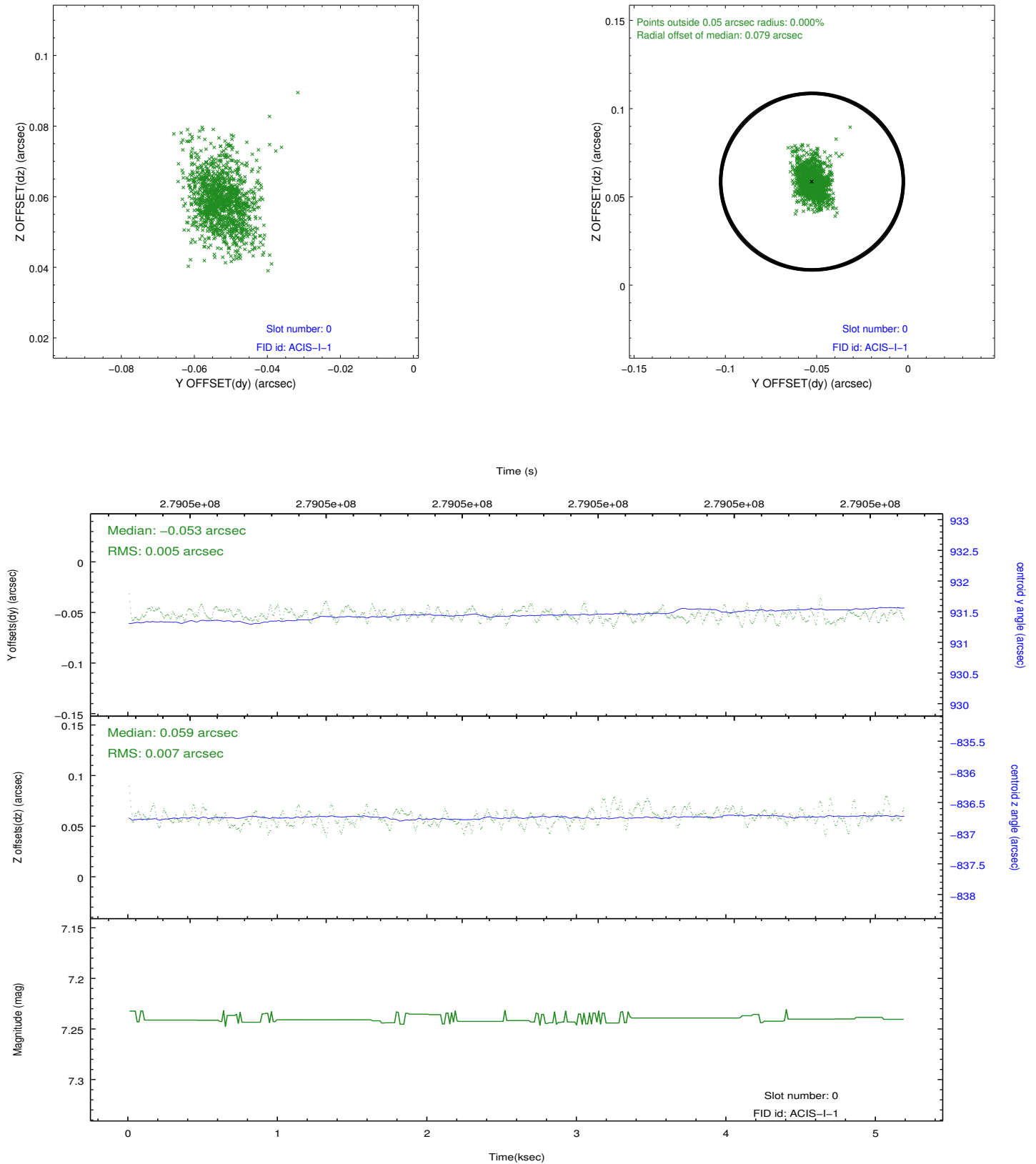


2.4.5 Slot 7

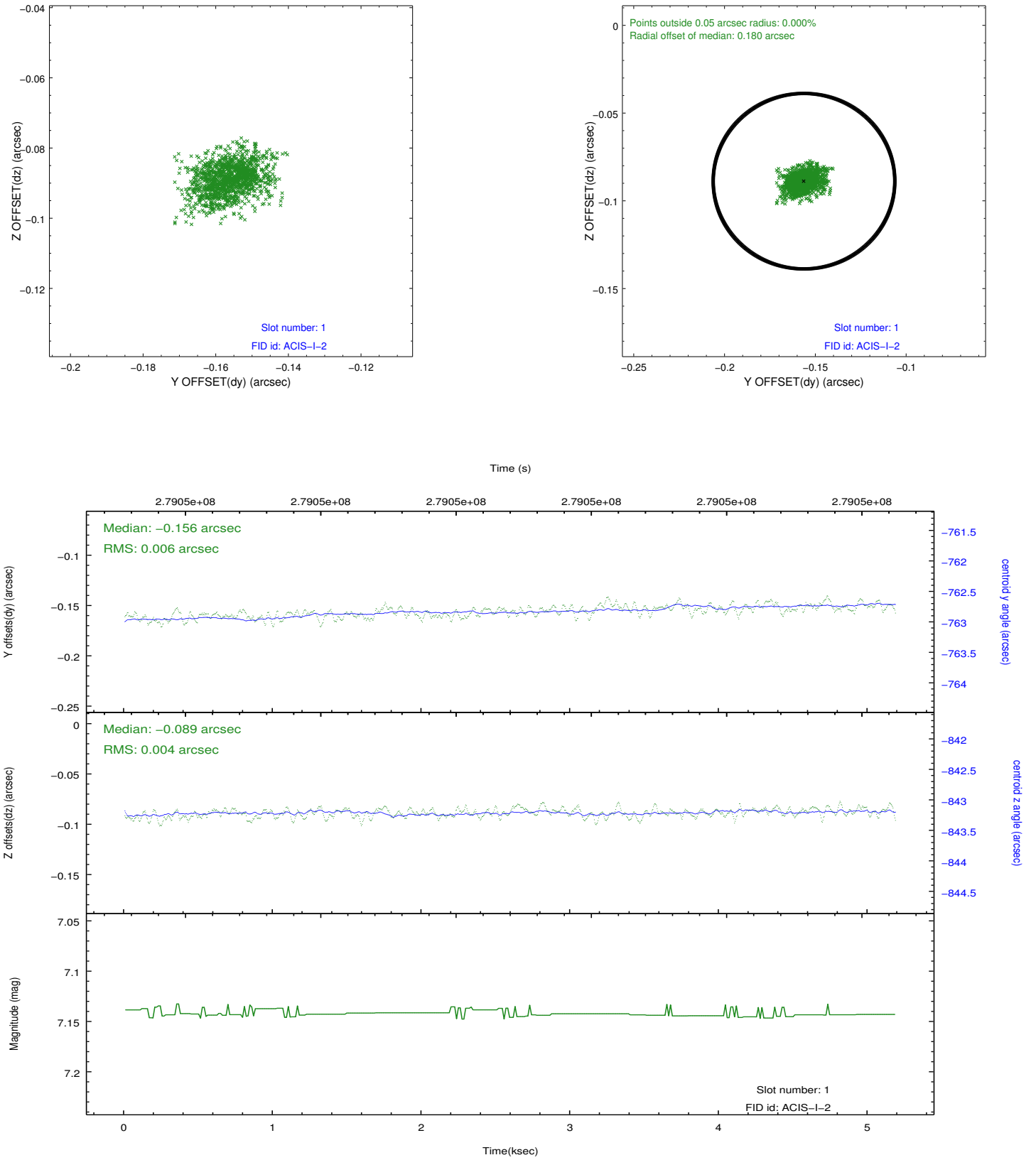


2.5 FID Slots

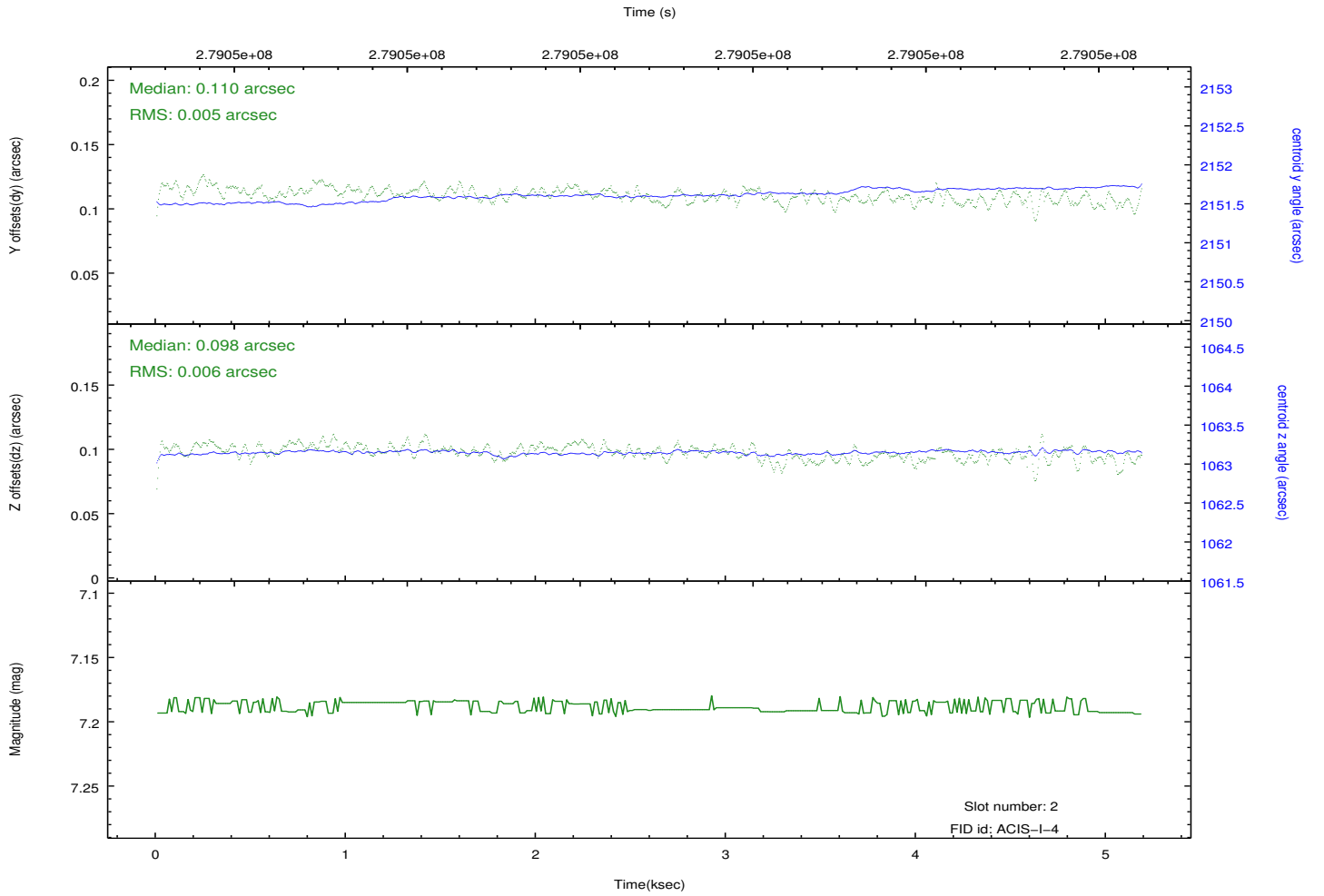
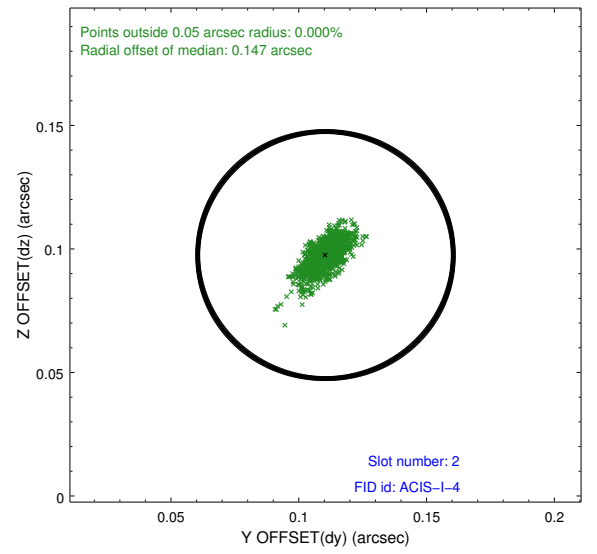
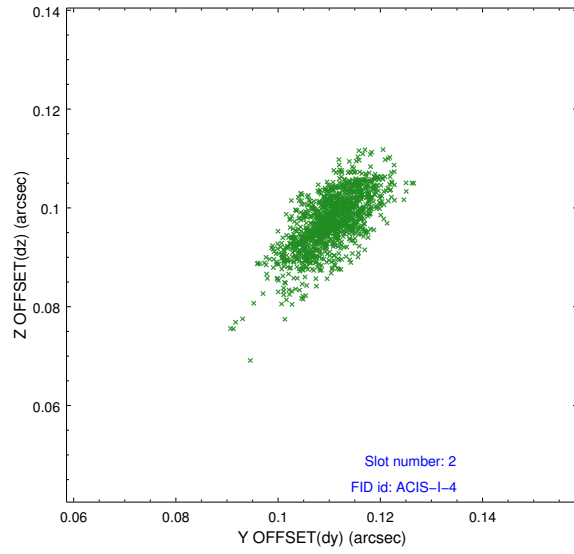
2.5.1 Slot 0



2.5.2 Slot 1



2.5.3 Slot 2



A Summary

A.1 Status

V&V Scientist	Beth Sundheim
V&V Date (YYYY-MM-DD)	2012.04.13
V&V Edition	1
V&V Disposition and Status	OK
V&V Charge Time	4.77710003

A.2 Comments