

V&V Reference Report

L2 ASCDS Version : 8.4.3

Observation 6862 - L2 Version 2
Chandra X-Ray Center

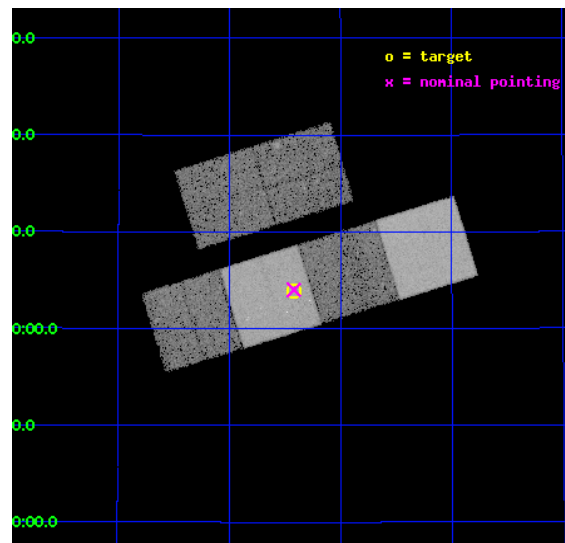
L2 Processing Date : Mar 24 2012

Contents

1	Front	2
2	OBI	3
2.1	OBI	3
2.1.1	Images	3
2.1.2	Bias	3
2.1.3	Parameters	4
2.1.4	Events	4
2.2	Compared Parameters	5
2.3	Aspect	6
2.4	Star Slots	9
2.4.1	Slot 3	9
2.4.2	Slot 4	10
2.4.3	Slot 5	11
2.4.4	Slot 6	12
2.4.5	Slot 7	13
2.5	FID Slots	14
2.5.1	Slot 0	14
2.5.2	Slot 1	15
2.5.3	Slot 2	16
A	Summary	17
A.1	Status	17
A.2	Comments	17

1 Front

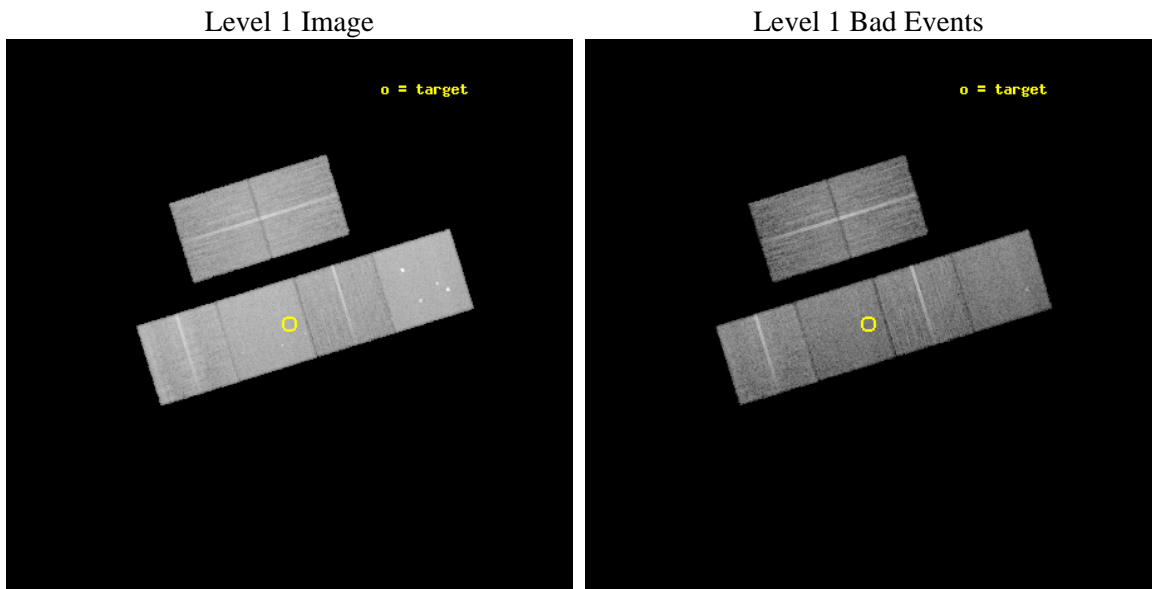
seq_num	701280	Sequence number
obs_id	6862	Observation id
title	Chandra observations of (U)LIRGs with double nuclei: search for binary AGN and X-ray luminous starbursts	Proposal title
observer	Dr. Stefanie Komossa	Principal investigator
object	IRAS08572+3915	Source name
dtcycle	0	
cycle	P	events from which exps? Prim/Second/Both
ra_targ	135.105833	Observer's specified target RA [deg]
dec_targ	39.065	Observer's specified target Dec [deg]
ra_nom	135.10493078949	Nominal RA [deg]
dec_nom	39.06698049425	Nominal Dec [deg]
roll_nom	162.85280989623	Nominal Roll [deg]
revision	2	Processing version of data
ontime	15129.599943638	Sum of GTIs [s]
livetime	14938.0198392	Livetime [s]
ontime2	15129.599943638	Sum of GTIs [s]
ontime3	15129.599943638	Sum of GTIs [s]
ontime5	15129.599943638	Sum of GTIs [s]
ontime6	15129.599943638	Sum of GTIs [s]
ontime7	15129.599943638	Sum of GTIs [s]
ontime8	15129.599943638	Sum of GTIs [s]
l2events	201141	Number of level 2 events



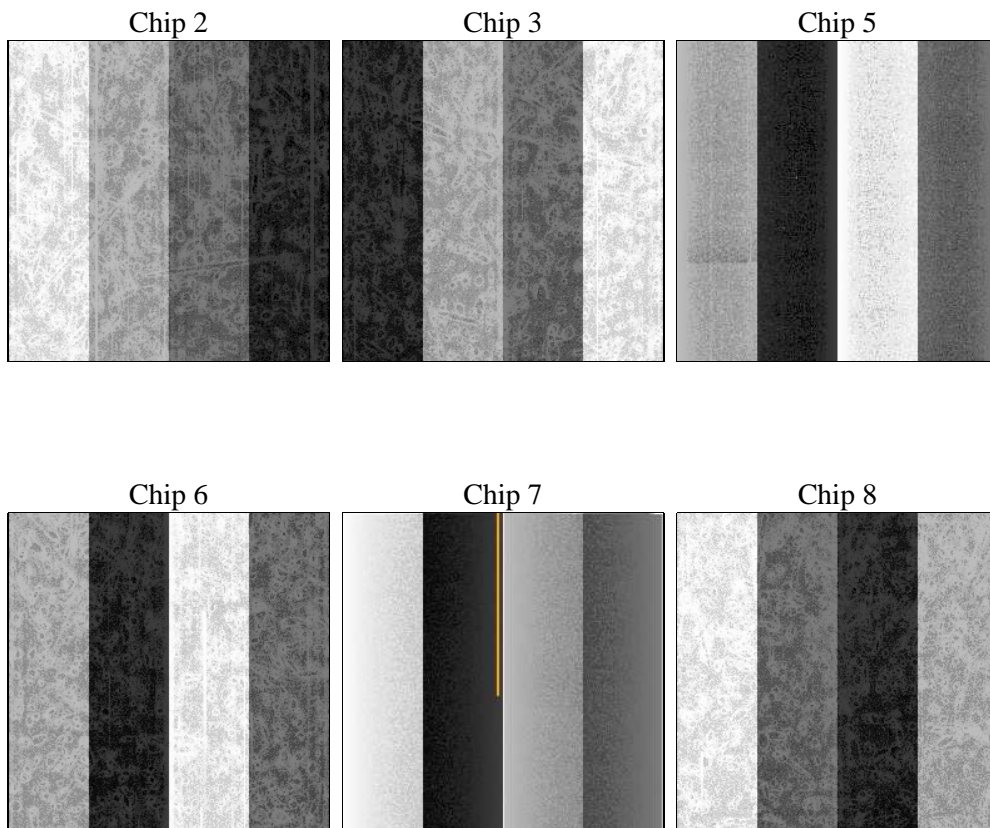
2 OBI

2.1 OBI

2.1.1 Images



2.1.2 Bias



2.1.3 Parameters

obi_num	0	Obi number	sched_exp_time	15000.000000	[s] Scheduled observation exposure time
ascdsver	8.4.3	Processing system revision	ontime	15129.599943638	Sum of GTIs [s]
caldsver	4.4.8	 	ontime2	15129.599943638	Sum of GTIs [s]
date	2012-03-24T06:23:07	Date and time of file creation	ontime3	15129.599943638	Sum of GTIs [s]
revision	2	Processing version of data	ontime5	15129.599943638	Sum of GTIs [s]
			ontime6	15129.599943638	Sum of GTIs [s]
			ontime7	15129.599943638	Sum of GTIs [s]
			ontime8	15129.599943638	Sum of GTIs [s]
			l1events	892785	Number of level 1 events

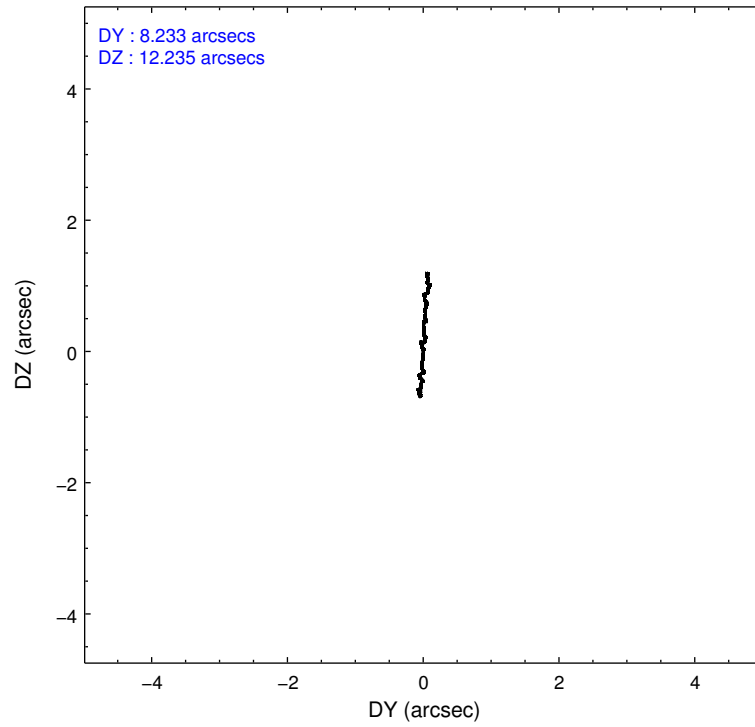
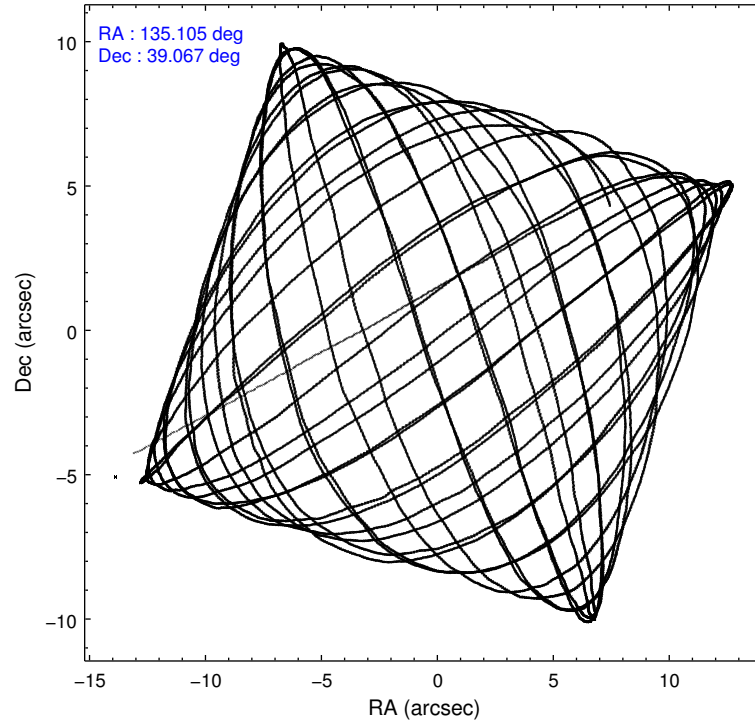
2.1.4 Events

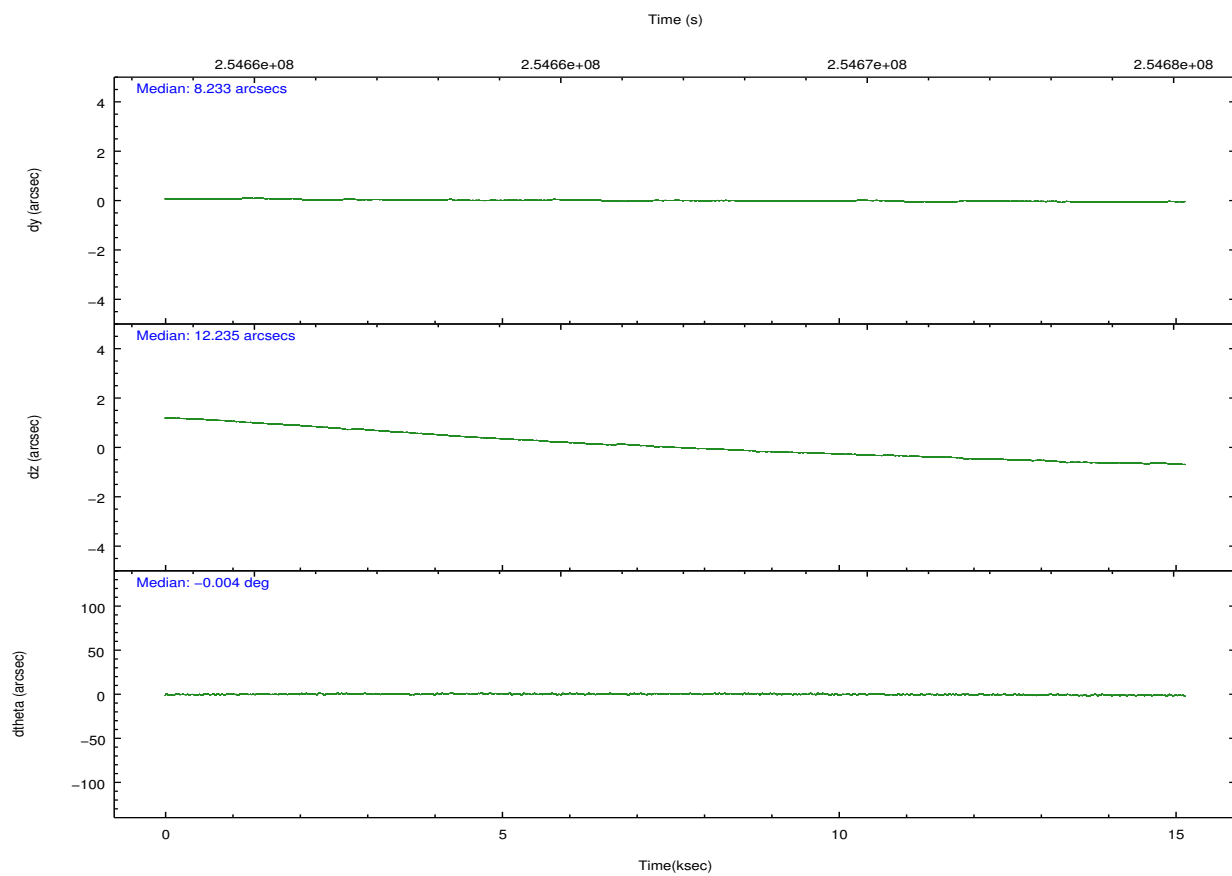
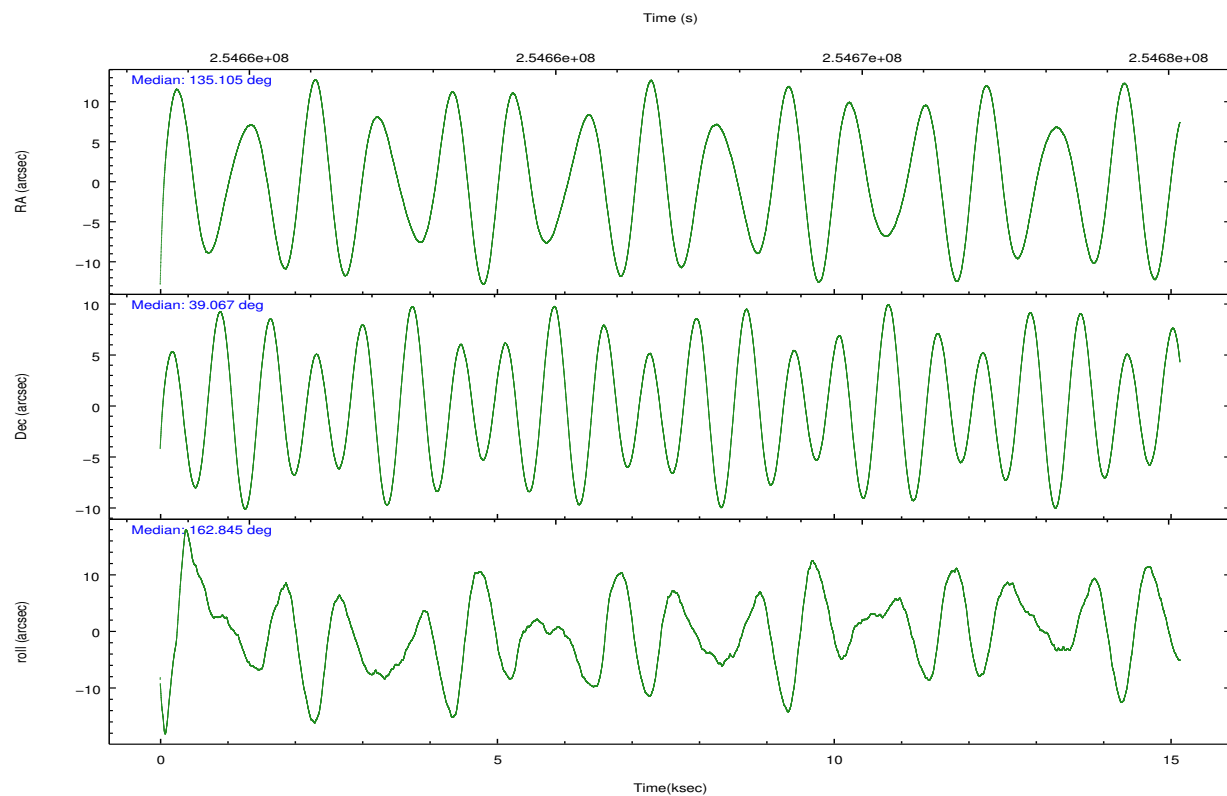
	ccd 2	ccd 3	ccd 5	ccd 6	ccd 7	ccd 8		ccd 2	ccd 3	ccd 5	ccd 6	ccd 7	ccd 8
level 1 events	127782	118951	190871	125211	170917	159053	grade 0 events	6720	6146	10710	5821	6393	11063
rejected events	112960	104786	102297	110534	100343	124601		5%	5%	5%	4%	3%	6%
rejected %	88%	88%	53%	88%	58%	78%	grade 1 events	83	87	232	66	183	123
								0%	0%	0%	0%	0%	0%
							grade 2 events	3072	2748	26617	3250	14247	7656
								2%	2%	13%	2%	8%	4%
							grade 3 events	1466	1457	3287	1445	6110	3761
								1%	1%	1%	1%	3%	2%
							grade 4 events	1326	1401	3132	1406	6210	3442
								1%	1%	1%	1%	3%	2%
							grade 5 events	4750	5534	13754	5819	15993	7777
								3%	4%	7%	4%	9%	4%
							grade 6 events	2350	2546	45497	2884	38167	8918
								1%	2%	23%	2%	22%	5%
							grade 7 events	108015	99032	87642	104520	83614	116313
								84%	83%	45%	83%	48%	73%

2.2 Compared Parameters

Parameter	Planned	Actual	Parameter	Planned	Actual
Instrument	ACIS	ACIS	Obspar format version number	7	7
Detector	ACIS-235678	ACIS-235678	Obspar file type	PREDICTED	ACTUAL
Grating	NONE	NONE	Obspar update status	NONE	UPDATED
Data mode	FAINT	FAINT	Number of optional ACIS chips dropped	0	0
Observation mode	POINTING	POINTING	On-chip summing requested	N	N
[deg] Pointing RA	135.139024	135.1049307894876	Subarray requested	NONE	NONE
[deg] Pointing Dec	39.073376	39.06698049425039	Alternating exposures requested	N	N
[deg] Pointing Roll	162.674689	162.8528098962279	[s] Primary exposure time	0.000000	3.2
[mm] SIM focus pos	-0.684267	-0.6828225247311905			
[mm] SIM defocus	0	0.001444936568705701			
[mm] SIM translation stage pos	-190.132523	-190.1400660498719			
[mm] SIM translation stage offset	0	0.00754346686406393			
[s] Observation start time (MET)	254659428.184000	254658175.35529			
Observation start date	2006-01-26T10:42:43	2006-01-26T10:22:55			
[s] Observation end time (MET)	254674428.184000	254675437.38109			
Observation end date	2006-01-26T14:52:43	2006-01-26T15:10:37			
Read mode	TIMED	TIMED			

2.3 Aspect



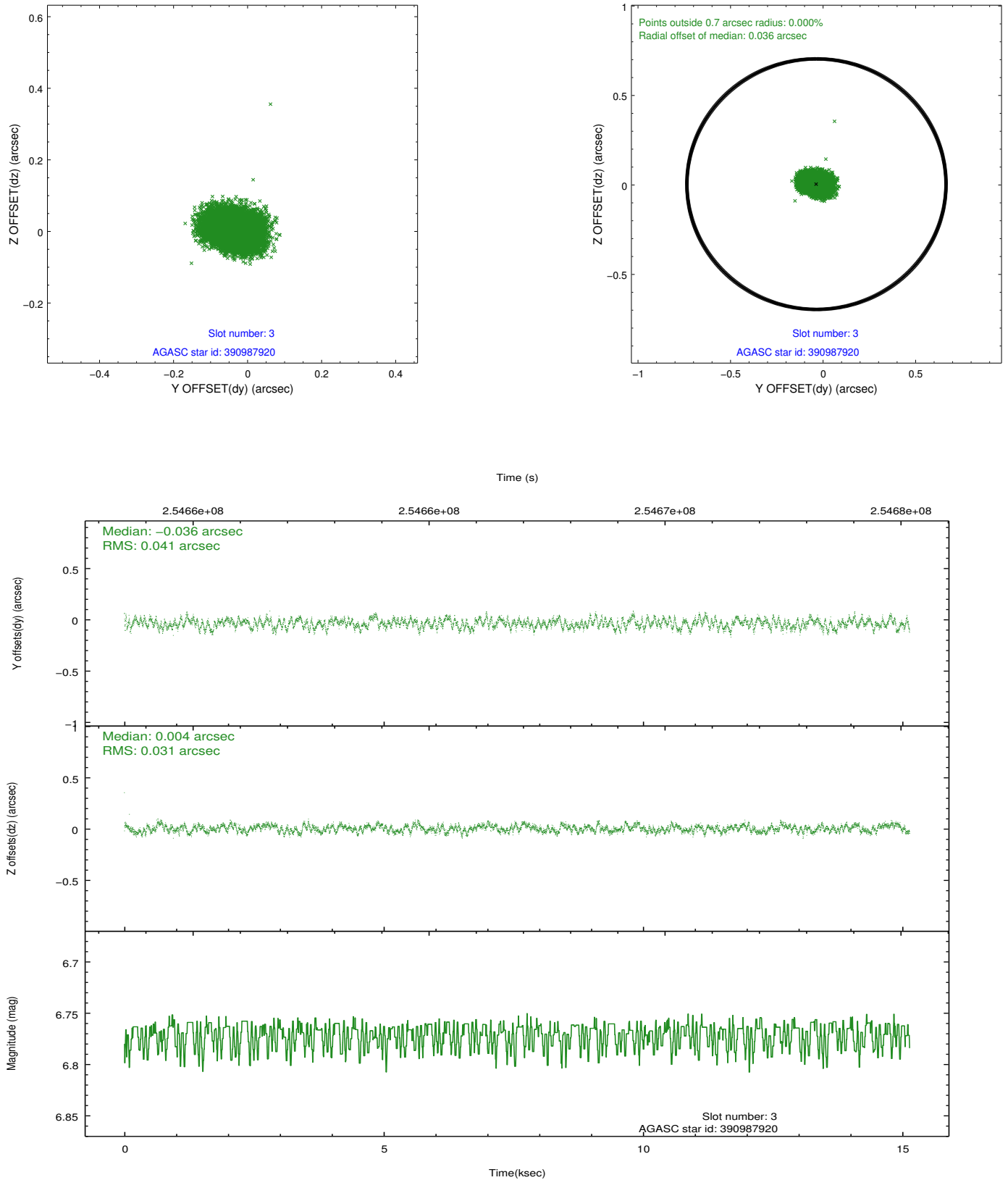


Slot Statistics

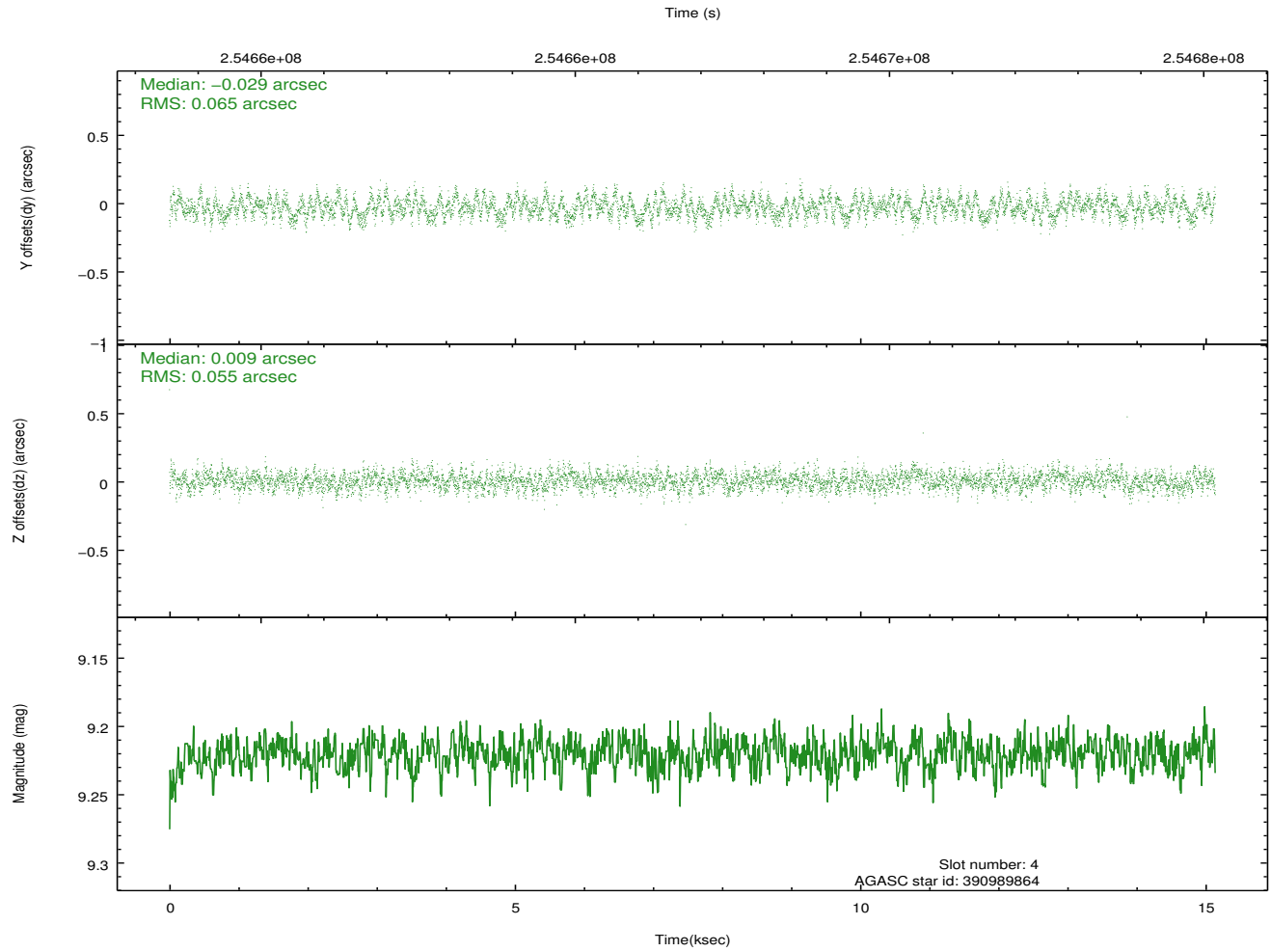
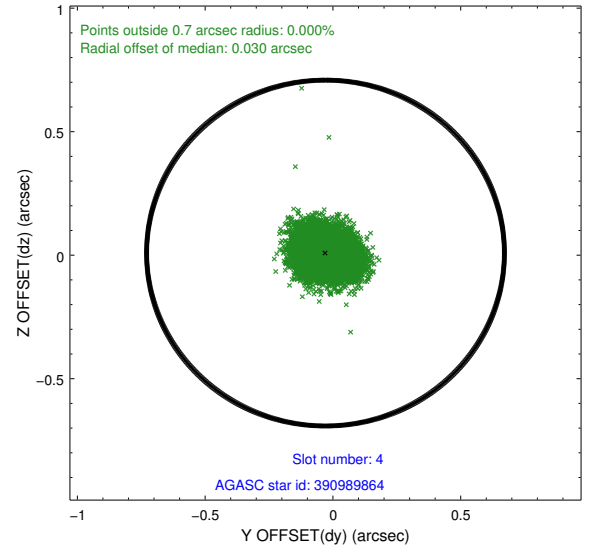
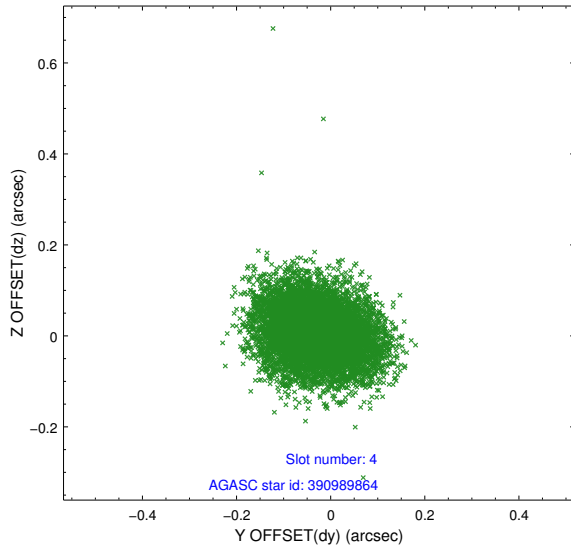
slot	status	id	mag	n_pts	med_dy	med_dz	dr1	dr2	ra	dec	mean_y	mean_z
0	FID	ACIS-S-2	7.11	3693	-0.055	-0.038	0.007	0.014	0.000000	0.000000	-761.07	-1733.68
1	FID	ACIS-S-4	7.20	3693	0.075	0.015	0.007	0.011	0.000000	0.000000	2152.20	174.55
2	FID	ACIS-S-6	7.35	3693	-0.048	0.030	0.008	0.014	0.000000	0.000000	401.30	812.30
3	GUIDE	390987920	6.77	7386	-0.036	0.004	0.055	0.086	135.579027	38.656612	-1626.94	1061.35
4	GUIDE	390989864	9.22	7379	-0.029	0.009	0.092	0.144	134.712308	38.604301	643.73	1967.61
5	GUIDE	390994640	9.59	7371	0.057	0.080	0.106	0.172	135.377792	39.632272	-31.95	-2118.03
6	GUIDE	390988344	8.67	7385	0.071	-0.166	0.081	0.123	134.934543	38.436837	-131.89	2358.56
7	GUIDE	390990800	9.34	7382	-0.066	0.076	0.091	0.146	135.552540	38.698837	-1509.86	939.31

2.4 Star Slots

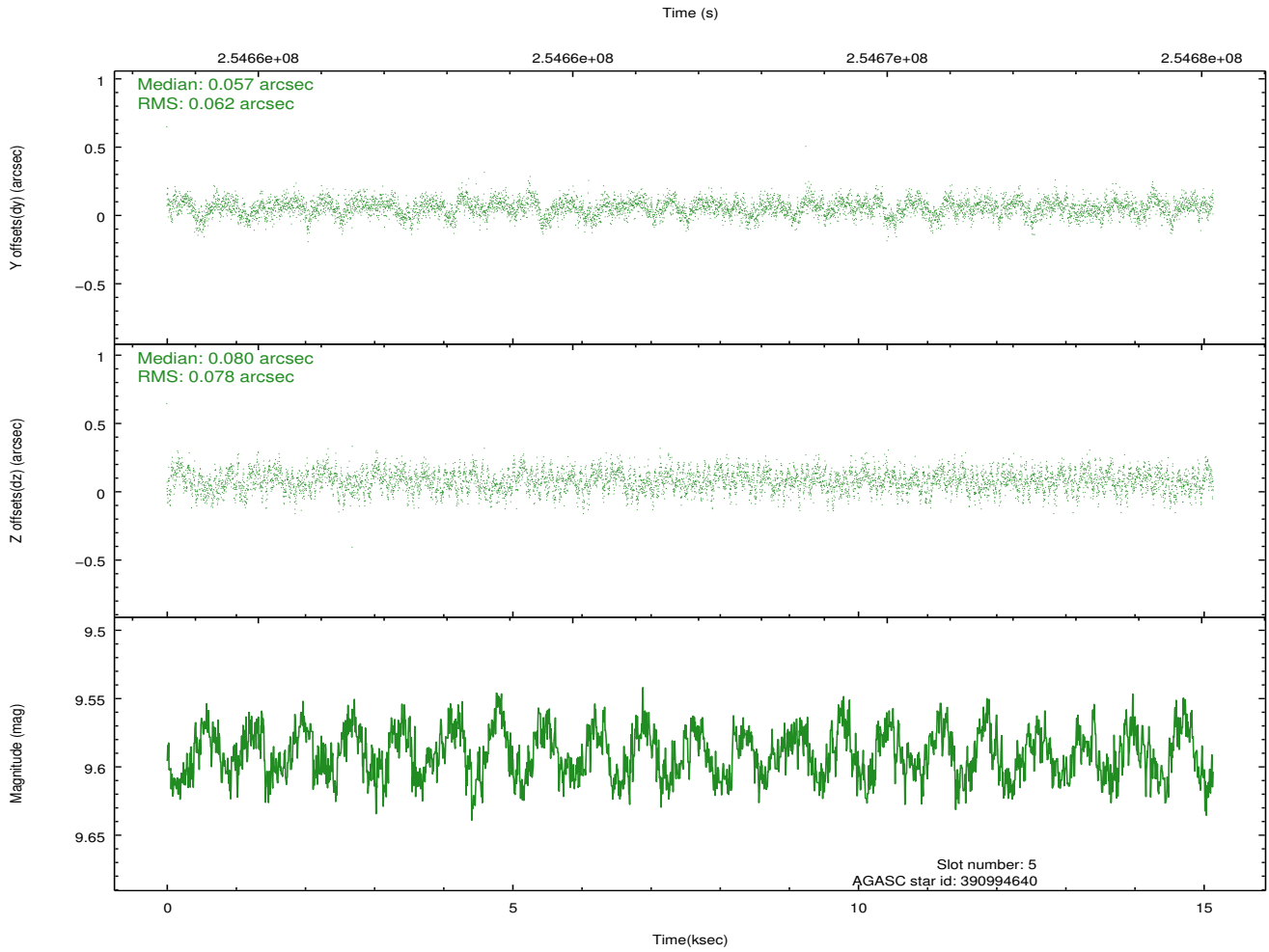
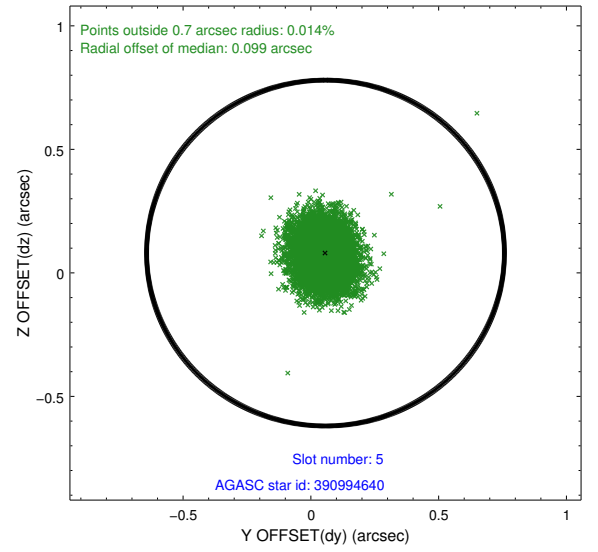
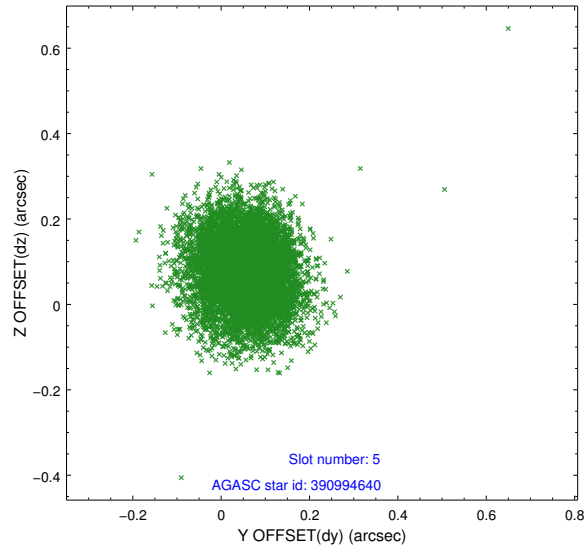
2.4.1 Slot 3



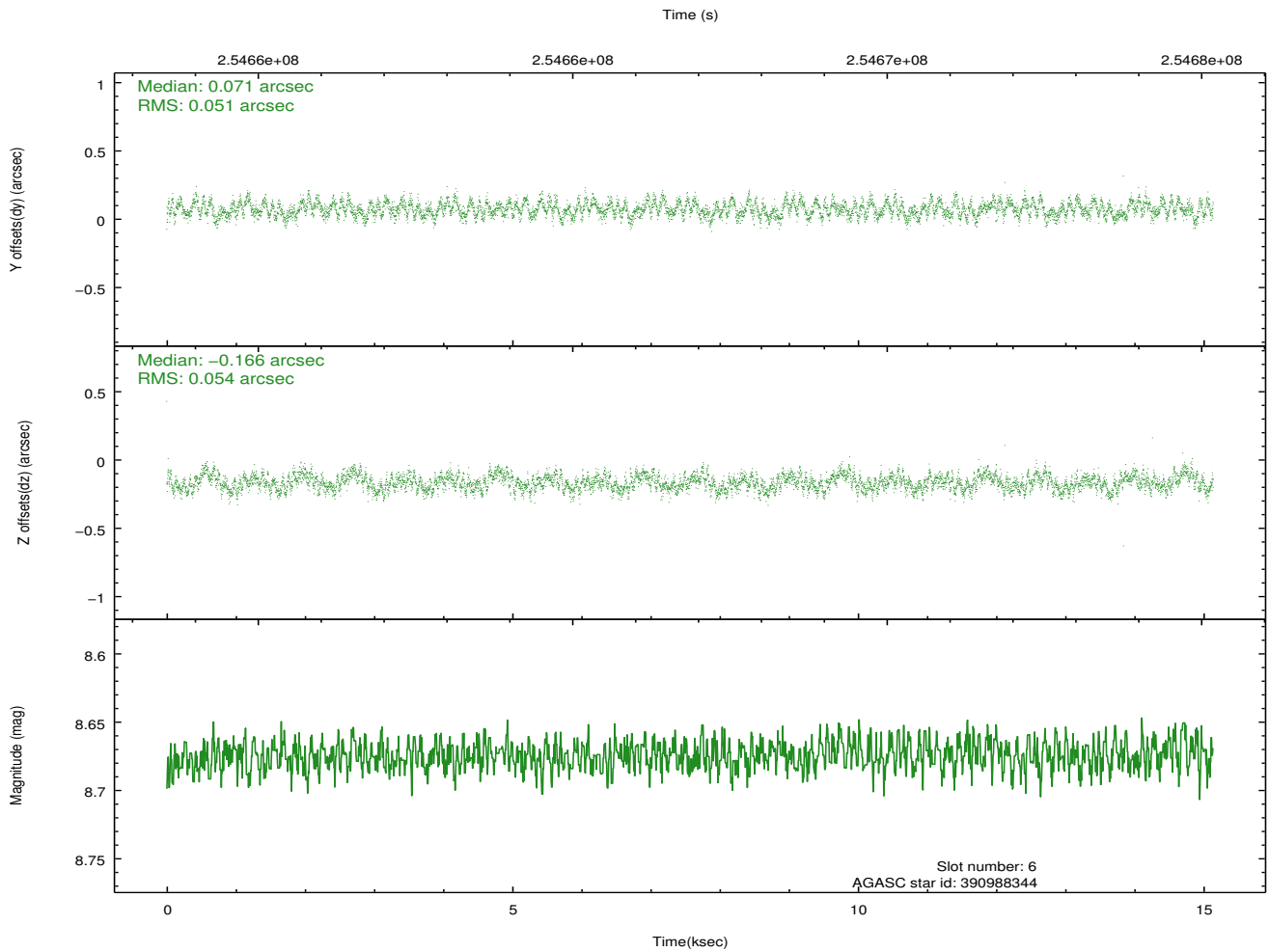
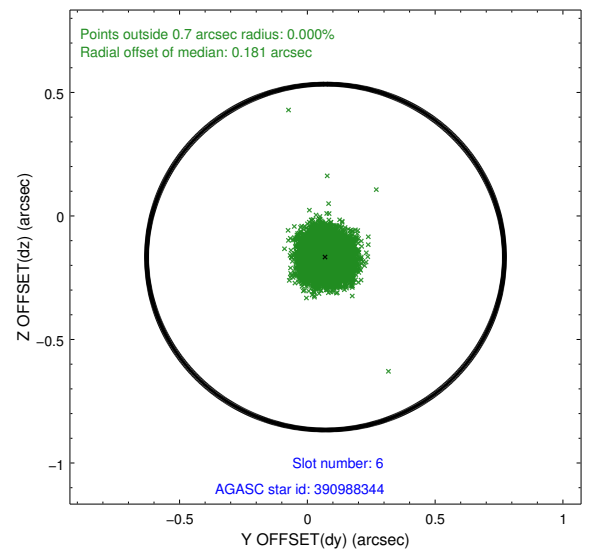
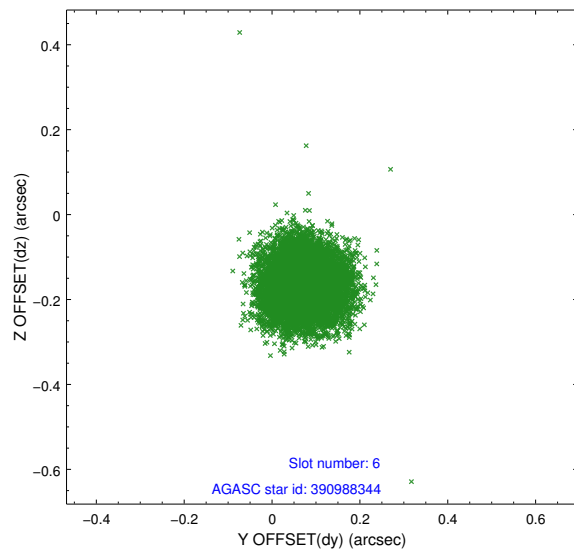
2.4.2 Slot 4



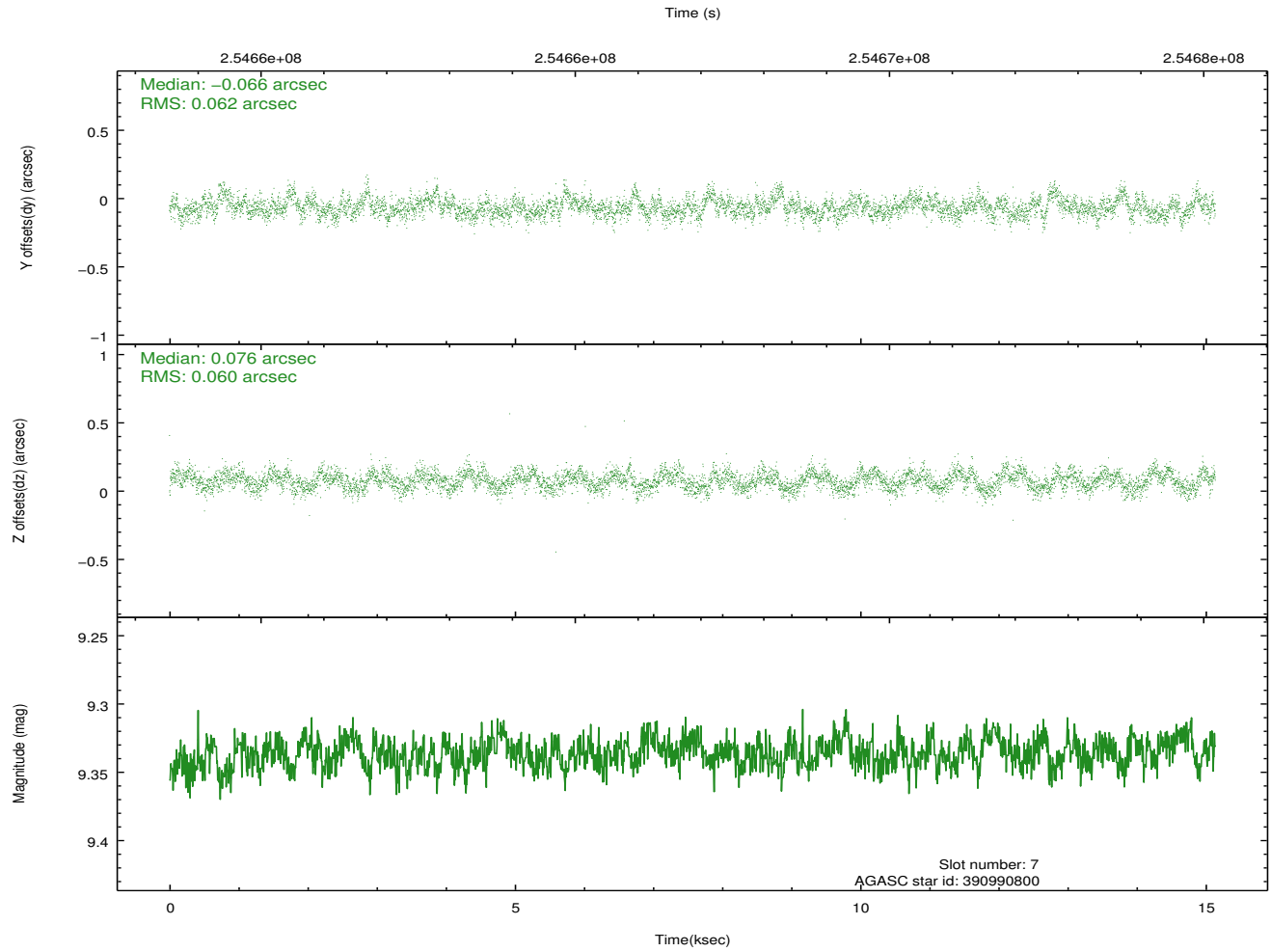
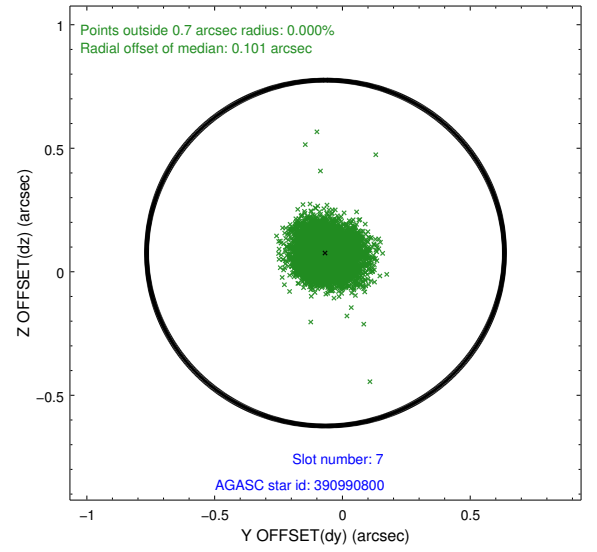
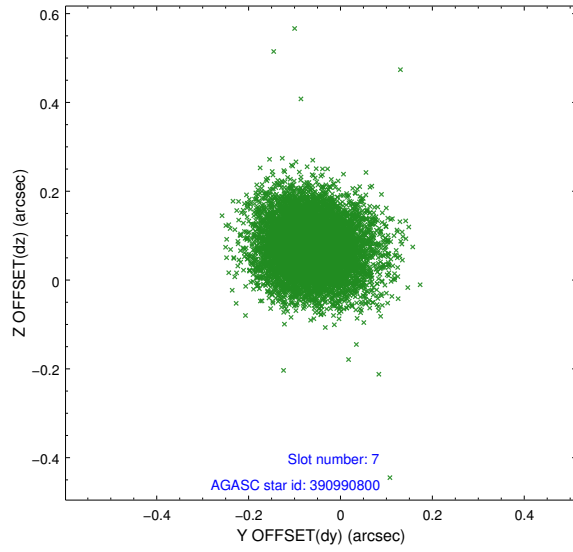
2.4.3 Slot 5



2.4.4 Slot 6

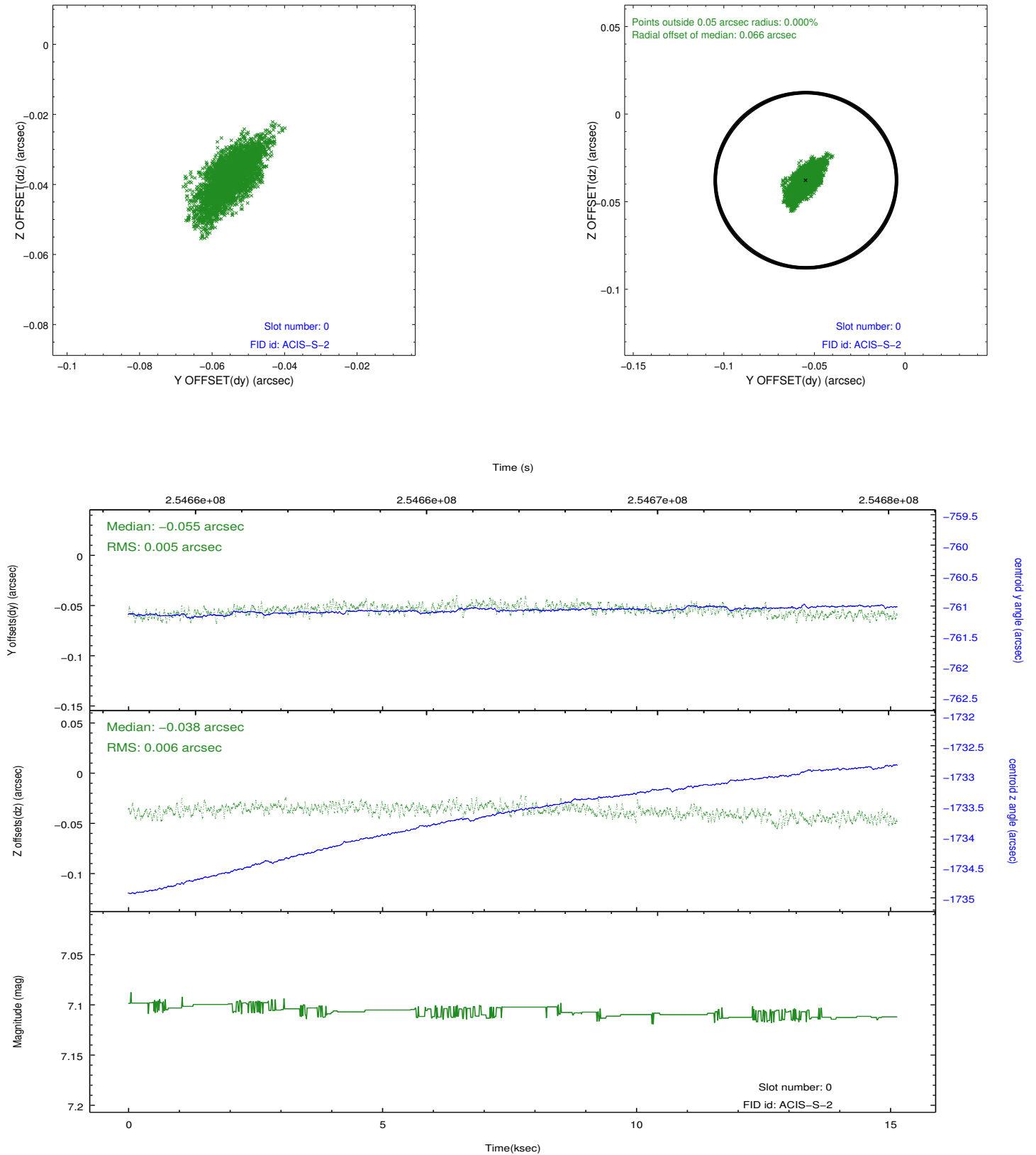


2.4.5 Slot 7

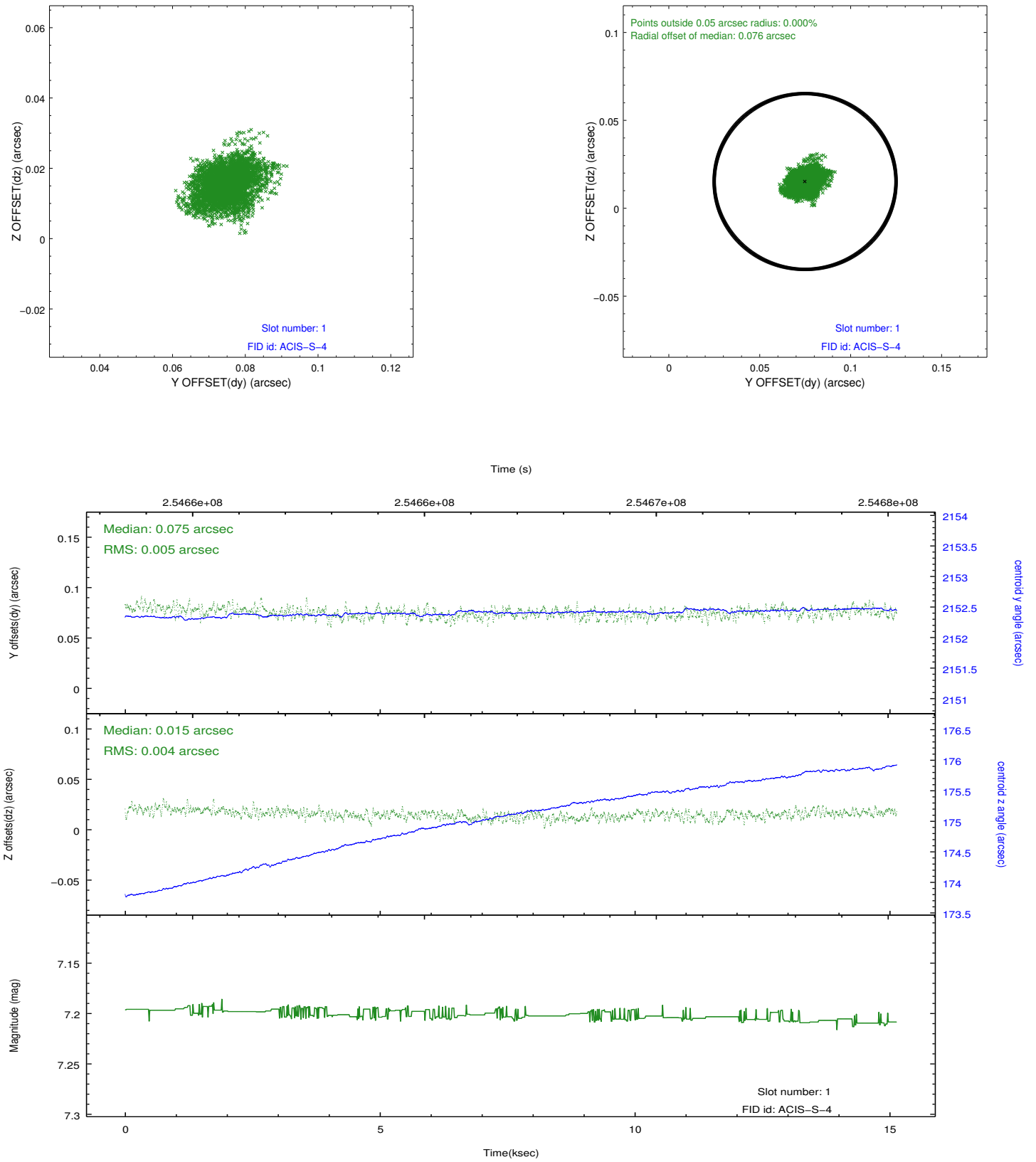


2.5 FID Slots

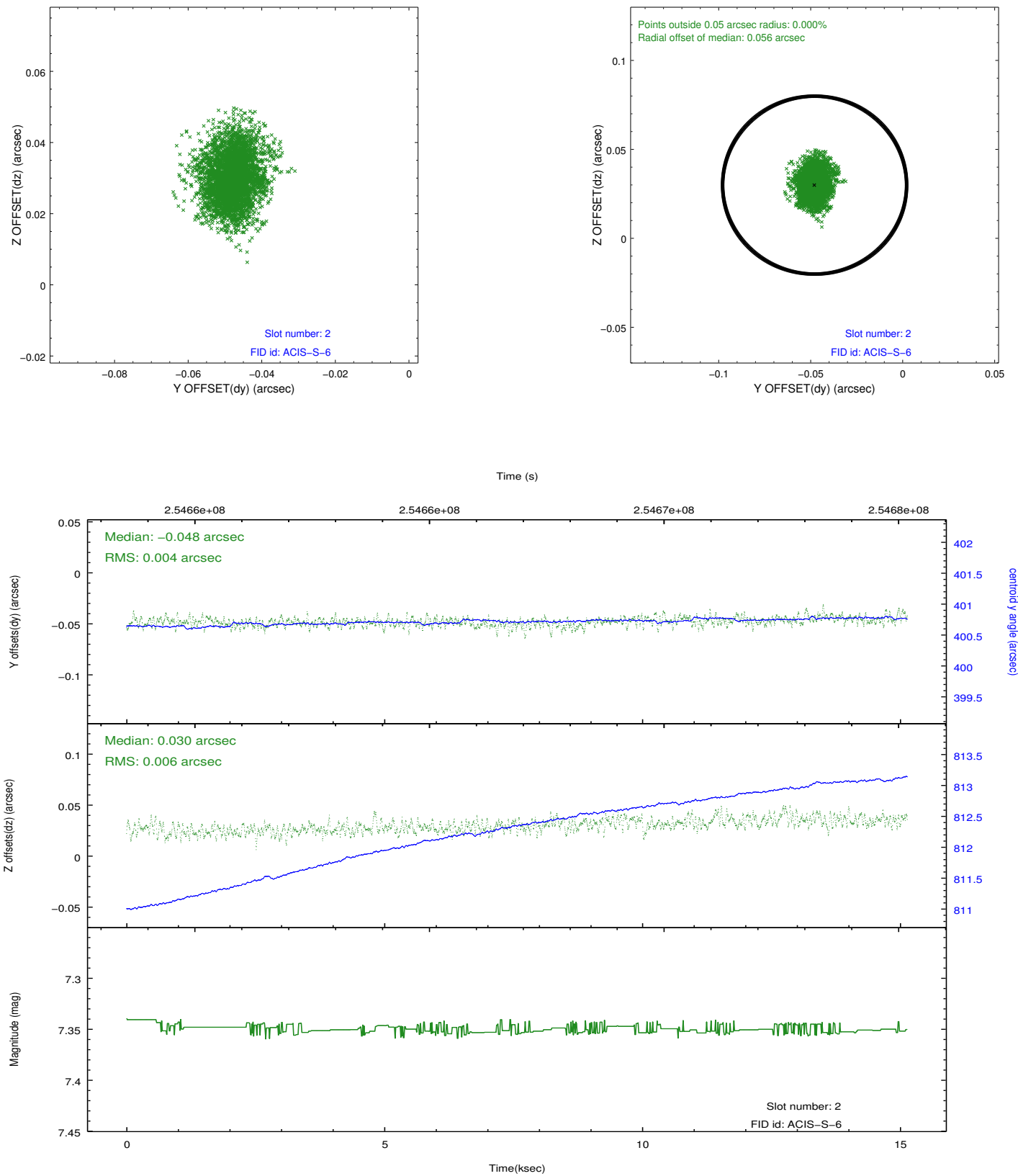
2.5.1 Slot 0



2.5.2 Slot 1



2.5.3 Slot 2



A Summary

A.1 Status

V&V Scientist	Jen Lauer
V&V Date (YYYY-MM-DD)	2012.03.26
V&V Edition	1
V&V Disposition and Status	OK
V&V Charge Time	15.1295999

A.2 Comments