

# V&V Reference Report

## L2 ASCDS Version : 8.4.3

Observation 6802 - L2 Version 2  
Chandra X-Ray Center

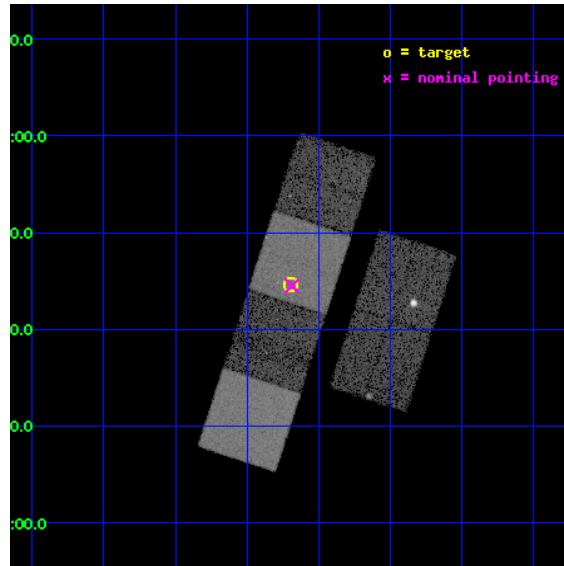
L2 Processing Date : Mar 25 2012

## Contents

<b>1</b>	<b>Front</b>	<b>2</b>
<b>2</b>	<b>OBI</b>	<b>3</b>
2.1	OBI . . . . .	3
2.1.1	Images . . . . .	3
2.1.2	Bias . . . . .	3
2.1.3	Parameters . . . . .	4
2.1.4	Events . . . . .	4
2.2	Compared Parameters . . . . .	5
2.3	Aspect . . . . .	6
2.4	Star Slots . . . . .	9
2.4.1	Slot 3 . . . . .	9
2.4.2	Slot 4 . . . . .	10
2.4.3	Slot 5 . . . . .	11
2.4.4	Slot 6 . . . . .	12
2.4.5	Slot 7 . . . . .	13
2.5	FID Slots . . . . .	14
2.5.1	Slot 0 . . . . .	14
2.5.2	Slot 1 . . . . .	15
2.5.3	Slot 2 . . . . .	16
<b>A</b>	<b>Summary</b>	<b>17</b>
A.1	Status . . . . .	17
A.2	Comments . . . . .	17

# 1 Front

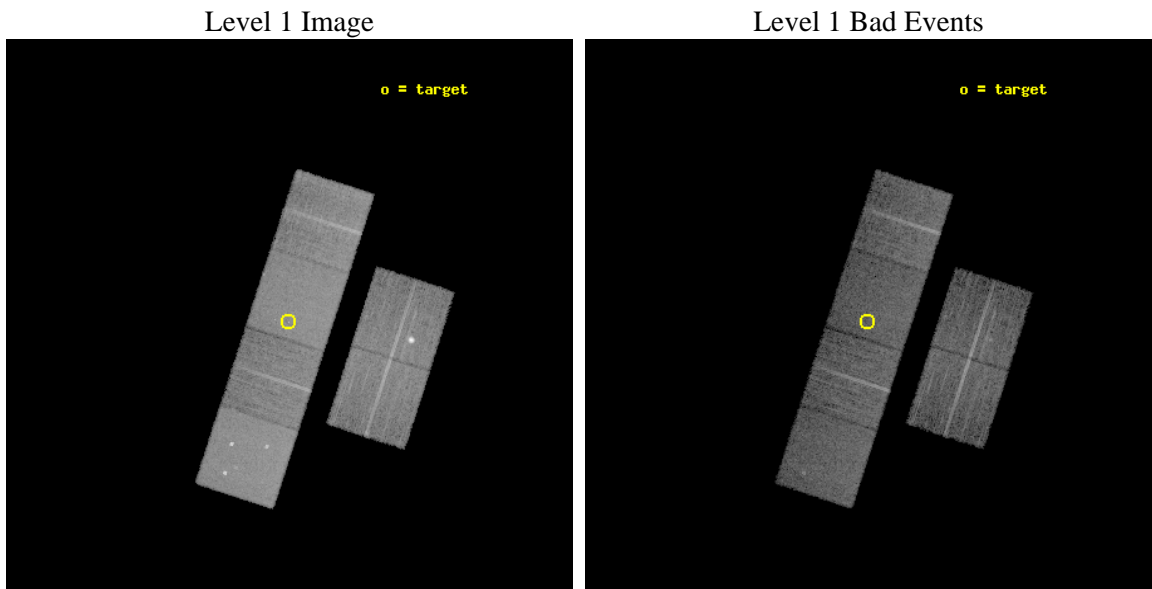
seq_num	701220	Sequence number
obs_id	6802	Observation id
title	X-ray Observations of Optically-Selected Type II Quasars	Proposal
observer	Prof. Michael Strauss	Principal investigator
object	SDSSJ0123+0044	Source name
dtcycle	0	&#160
cycle	P	events from which exps? Prim/Second/Both
ra_targ	20.922917	Observer's specified target RA [deg]
dec_targ	0.743306	Observer's specified target Dec [deg]
ra_nom	20.92174813866	Nominal RA [deg]
dec_nom	0.74156776423426	Nominal Dec [deg]
roll_nom	288.0349070179	Nominal Roll [deg]
revision	2	Processing version of data
ontime	9953.9911077321	Sum of GTIs [s]
livetime	9827.9476787521	Livetime [s]
ontime2	9954.0321477354	Sum of GTIs [s]
ontime3	9953.8679877222	Sum of GTIs [s]
ontime5	9953.9500677288	Sum of GTIs [s]
ontime6	9953.9090277255	Sum of GTIs [s]
ontime7	9953.9911077321	Sum of GTIs [s]
ontime8	9953.8269477487	Sum of GTIs [s]
l2events	145939	Number of level 2 events



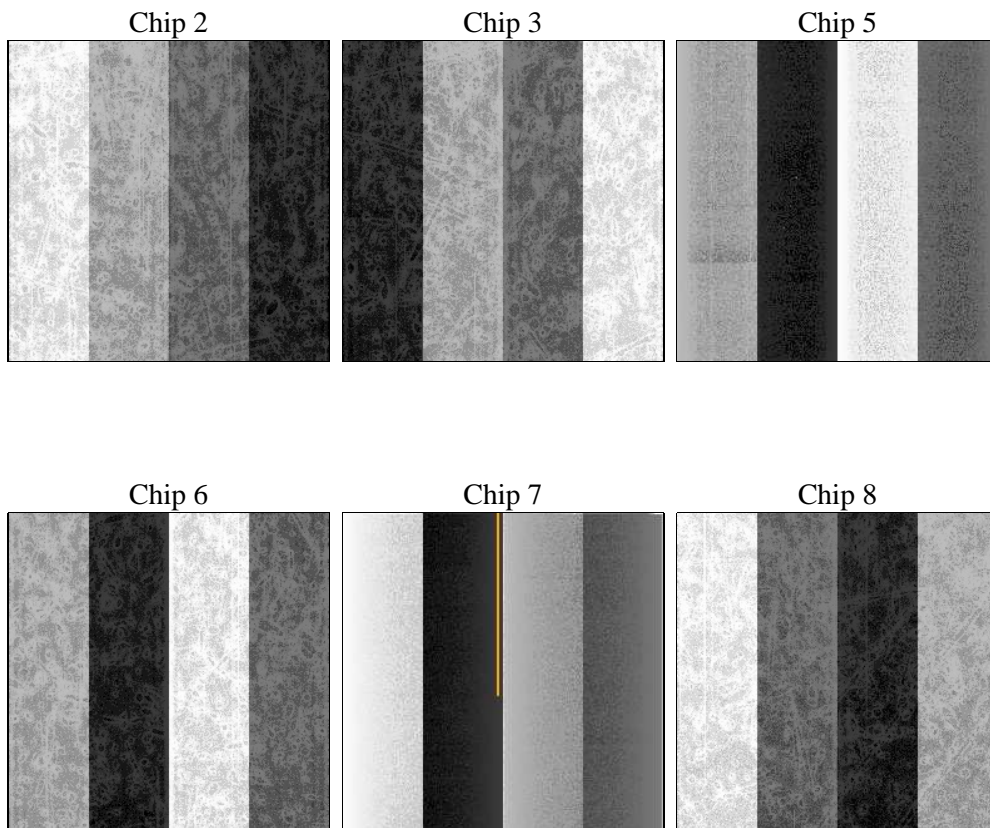
## 2 OBI

### 2.1 OBI

#### 2.1.1 Images



#### 2.1.2 Bias



### 2.1.3 Parameters

obi_num	0	Obi number	sched_exp_time	10000.000000	[s] Scheduled observation exposure time
ascdsver	8.4.3	Processing system revision	ontime	9953.9911077321	Sum of GTIs [s]
caldsver	4.4.8	&#160	ontime2	9954.0321477354	Sum of GTIs [s]
date	2012-03-25T02:02:47	Date and time of file creation	ontime3	9953.8679877222	Sum of GTIs [s]
revision	2	Processing version of data	ontime5	9953.9500677288	Sum of GTIs [s]
			ontime6	9953.9090277255	Sum of GTIs [s]
			ontime7	9953.9911077321	Sum of GTIs [s]
			ontime8	9953.8269477487	Sum of GTIs [s]
			l1events	612034	Number of level 1 events

### 2.1.4 Events

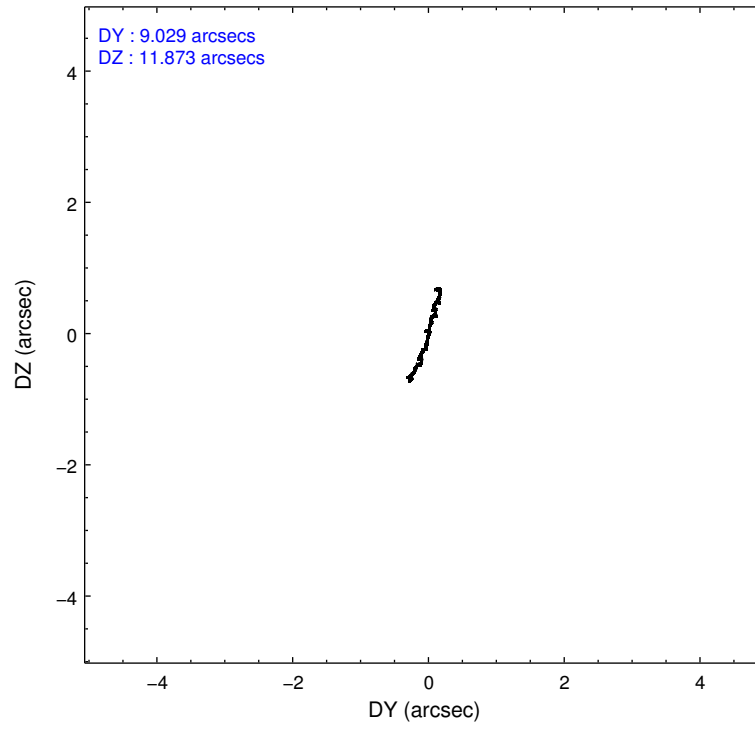
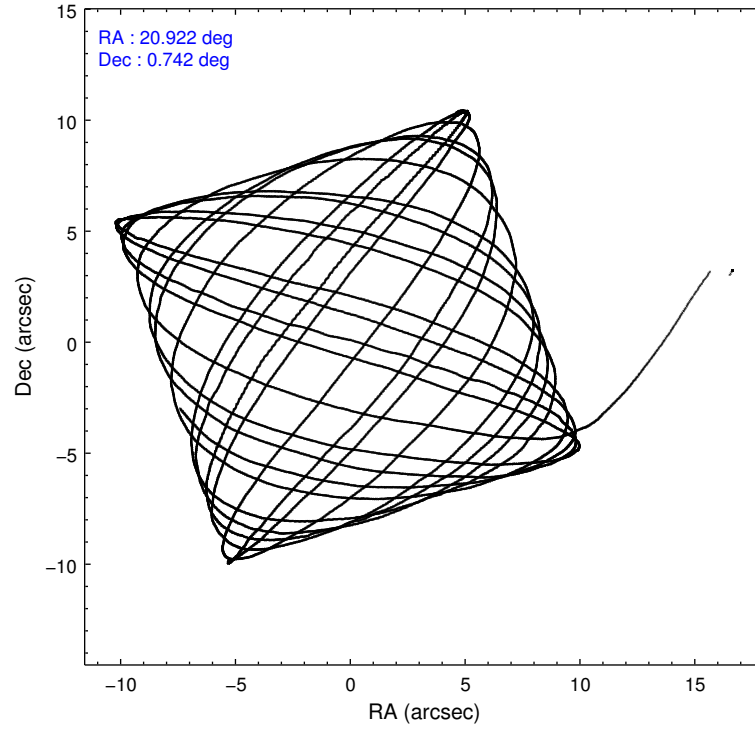
	ccd 2	ccd 3	ccd 5	ccd 6	ccd 7	ccd 8		ccd 2	ccd 3	ccd 5	ccd 6	ccd 7	ccd 8
level 1 events	85873	90832	129991	85077	114630	105631	grade 0 events	4498	11812	8473	3773	4258	7111
rejected events	75824	72342	69140	75225	66653	83113		5%	13%	6%	4%	3%	6%
rejected %	88%	79%	53%	88%	58%	78%	grade 1 events	73	133	399	48	138	66
								0%	0%	0%	0%	0%	0%
							grade 2 events	2105	2609	17195	2111	9601	4938
								2%	2%	13%	2%	8%	4%
							grade 3 events	858	1144	2207	972	4297	2318
								0%	1%	1%	1%	3%	2%
							grade 4 events	948	1094	2112	954	4246	2238
								1%	1%	1%	1%	3%	2%
							grade 5 events	3321	3752	9235	3957	10961	5157
								3%	4%	7%	4%	9%	4%
							grade 6 events	1651	1843	30908	2048	25603	5921
								1%	2%	23%	2%	22%	5%
							grade 7 events	72419	68445	59462	71214	55526	77882
								84%	75%	45%	83%	48%	73%

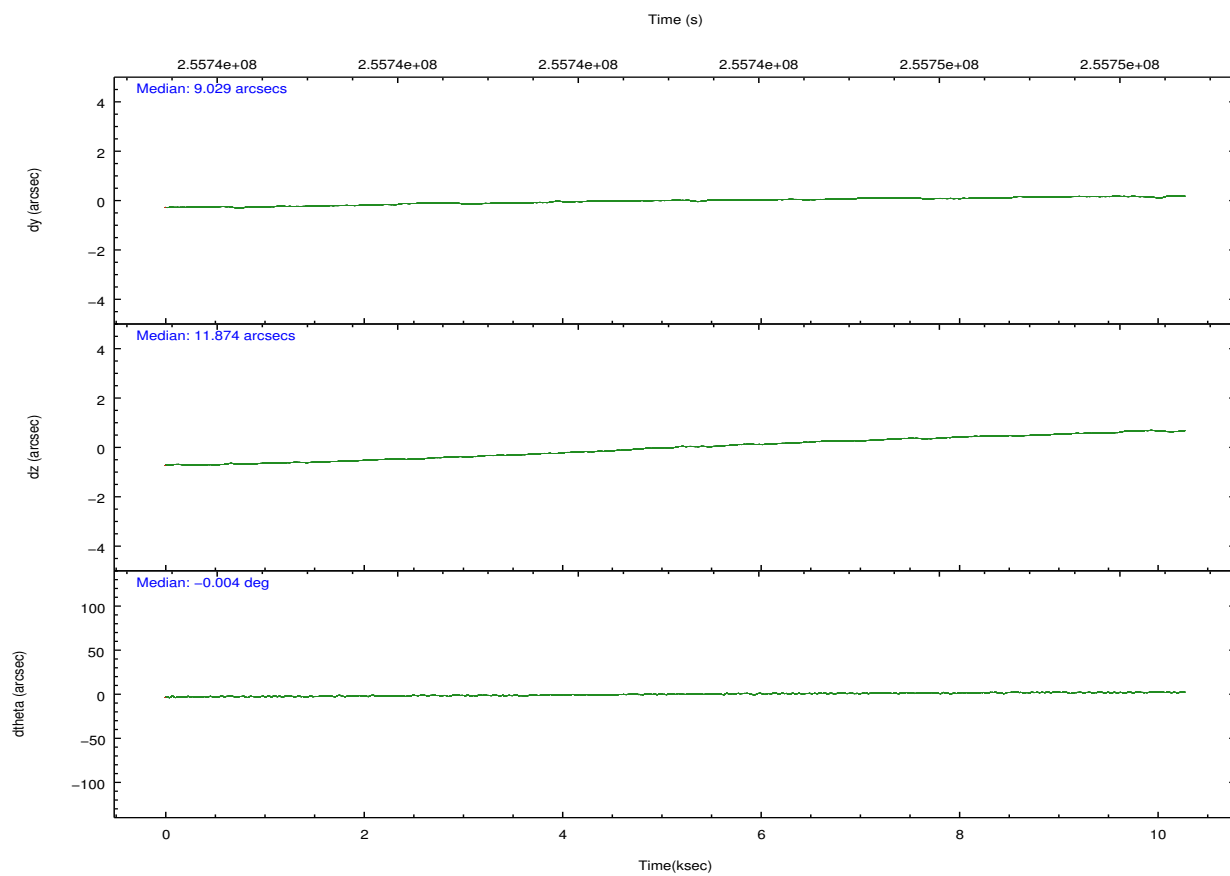
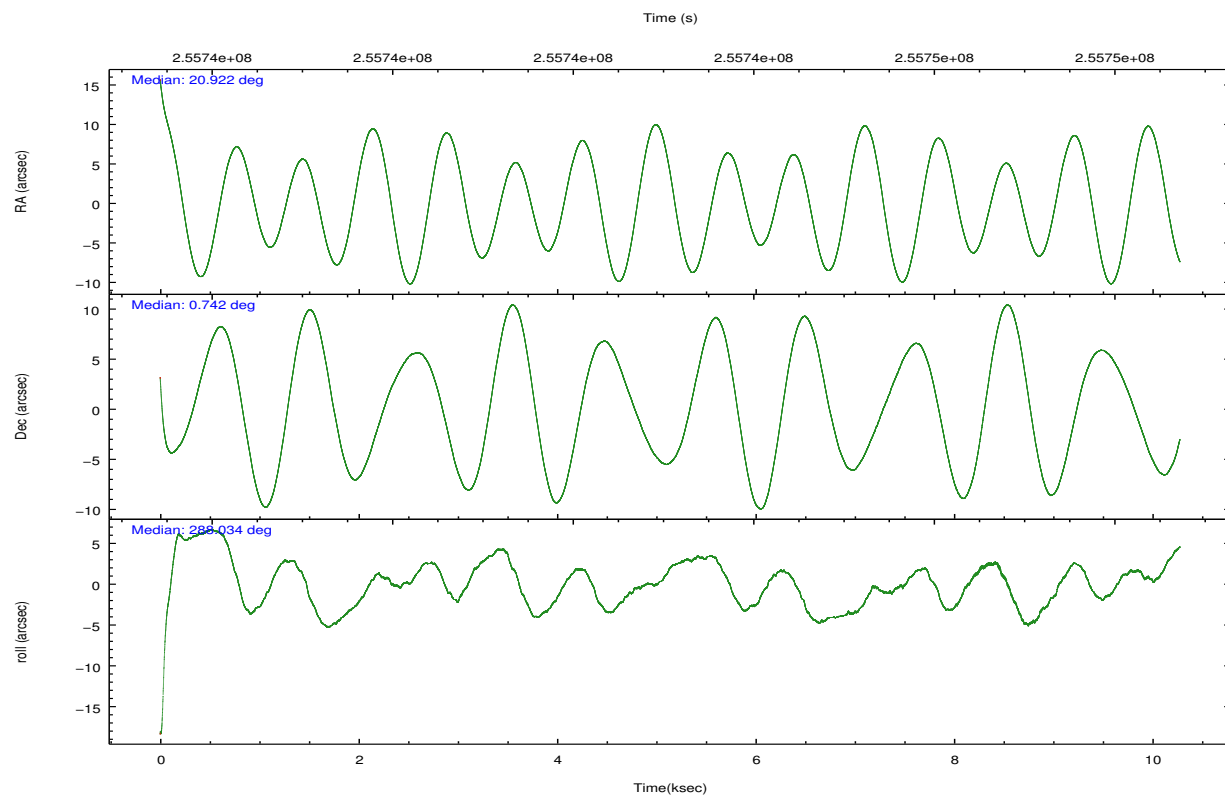


## 2.2 Compared Parameters

Parameter	Planned	Actual	Parameter	Planned	Actual
Instrument	ACIS	ACIS	Obspar format version number	7	7
Detector	ACIS-235678	ACIS-235678	Obspar file type	PREDICTED	ACTUAL
Grating	NONE	NONE	Obspar update status	NONE	UPDATED
Data mode	FAINT	FAINT	Number of optional ACIS chips dropped	0	0
Observation mode	POINTING	POINTING	On-chip summing requested	N	N
[deg] Pointing RA	20.901221	20.92174813866043	Subarray requested	NONE	NONE
[deg] Pointing Dec	0.759538	0.7415677642342599	Alternating exposures requested	N	N
[deg] Pointing Roll	287.878578	288.0349070179044	[s] Primary exposure time	0.000000	3.2
[mm] SIM focus pos	-0.684267	-0.6828225247311905			
[mm] SIM defocus	0	0.001444936568705701			
[mm] SIM translation stage pos	-190.132523	-190.1400660498719			
[mm] SIM translation stage offset	0	0.00754346686406393			
[s] Observation start time (MET)	255738207.184000	255737193.93034			
Observation start date	2006-02-07T22:22:22	2006-02-07T22:06:33			
[s] Observation end time (MET)	255748207.184000	255749173.6184			
Observation end date	2006-02-08T01:09:02	2006-02-08T01:26:13			
Read mode	TIMED	TIMED			

## 2.3 Aspect



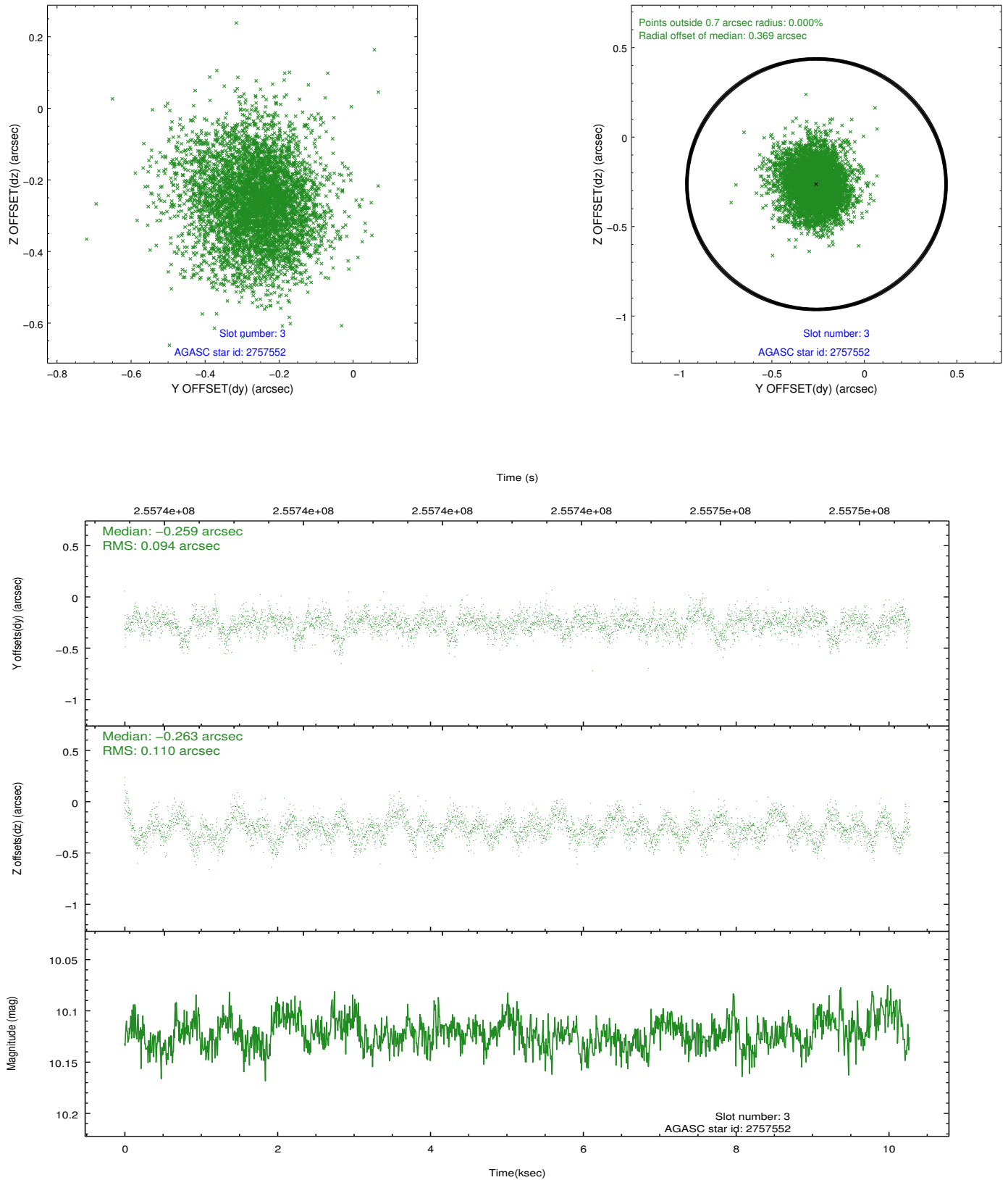


### Slot Statistics

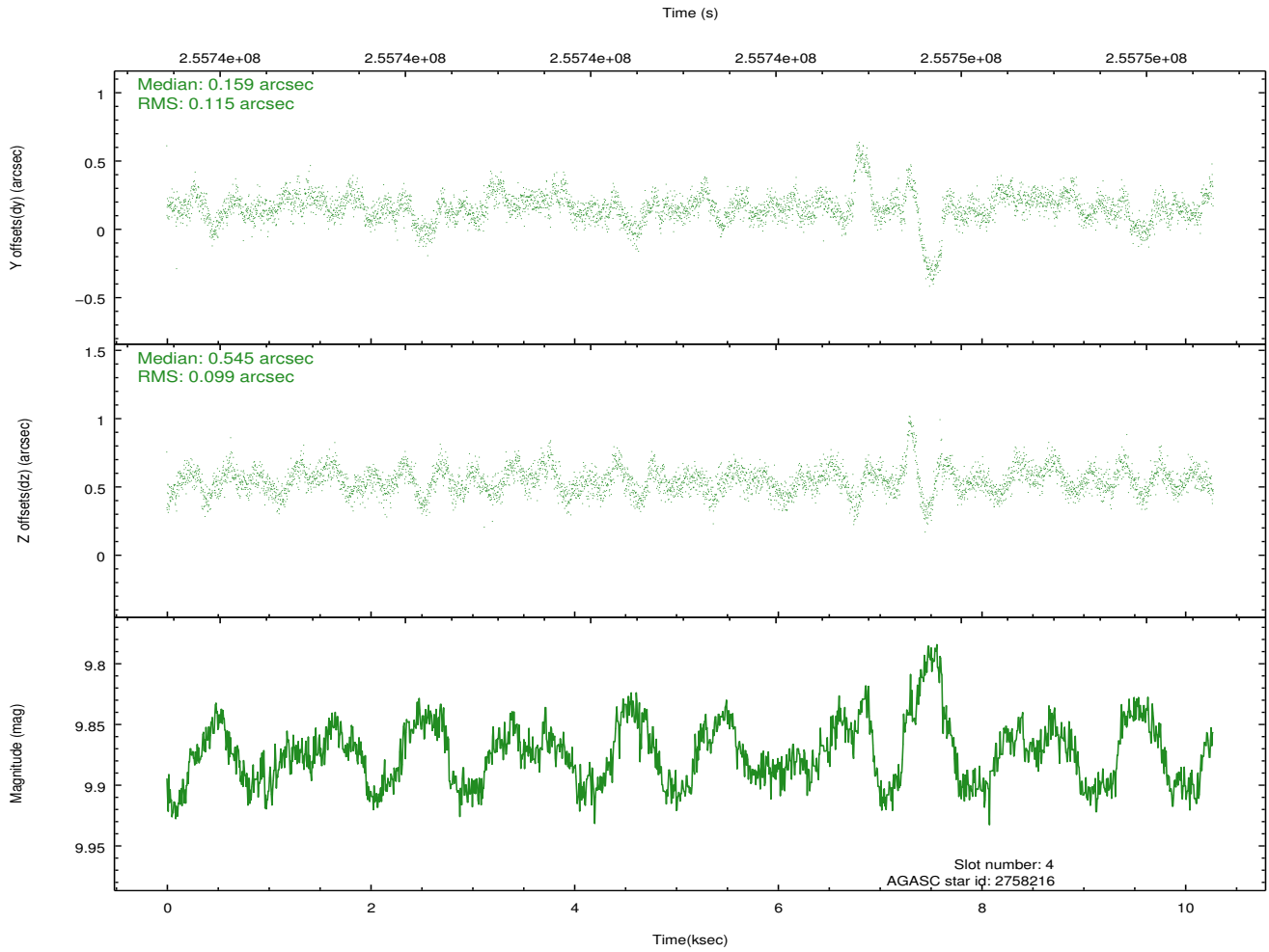
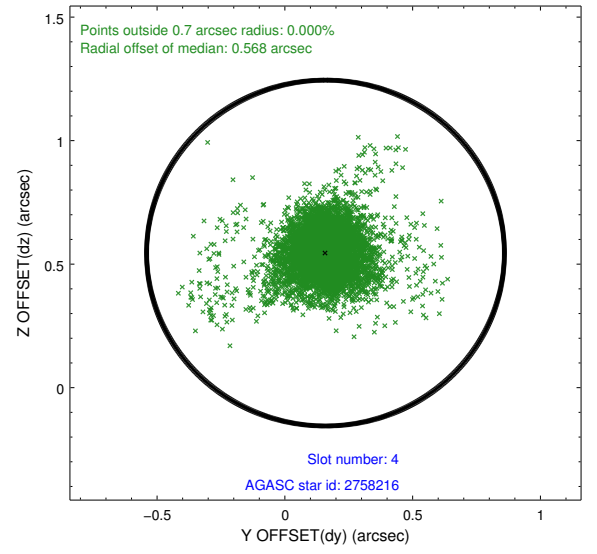
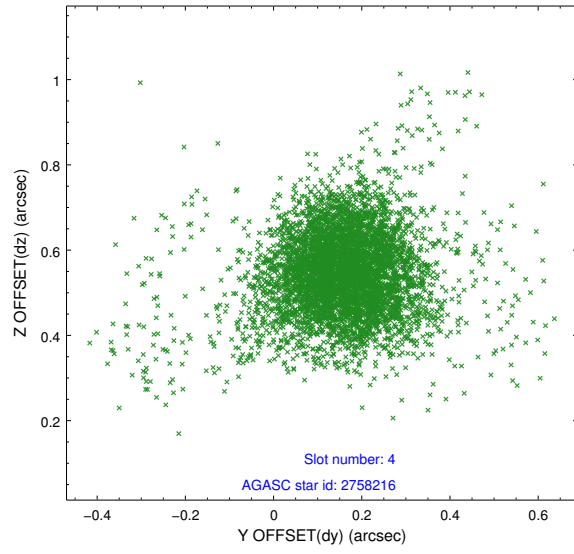
slot	status	id	mag	n_pts	med_dy	med_dz	dr1	dr2	ra	dec	mean_y	mean_z
0	FID	ACIS-S-2	7.11	2505	-0.022	-0.026	0.015	0.023	0.000000	0.000000	-761.83	-1733.17
1	FID	ACIS-S-4	7.20	2507	0.133	0.018	0.006	0.010	0.000000	0.000000	2151.37	174.83
2	FID	ACIS-S-5	7.23	2507	-0.142	0.017	0.015	0.023	0.000000	0.000000	-1814.14	169.08
3	GUIDE	2757552	10.12	5009	-0.259	-0.263	0.152	0.251	20.245435	1.208846	-2264.17	-1749.80
4	GUIDE	2758216	9.87	5010	0.159	0.545	0.142	0.279	20.719638	1.172446	-1615.44	-165.27
5	GUIDE	2758464	8.74	5012	0.017	0.121	0.085	0.145	21.264558	0.269048	2082.07	703.01
6	GUIDE	2759144	10.38	5003	-0.008	-0.234	0.178	0.288	20.278027	1.083474	-1798.10	-1776.67
7	GUIDE	2762808	8.09	5012	0.098	-0.177	0.082	0.125	20.709564	0.712052	-47.99	-710.50

## 2.4 Star Slots

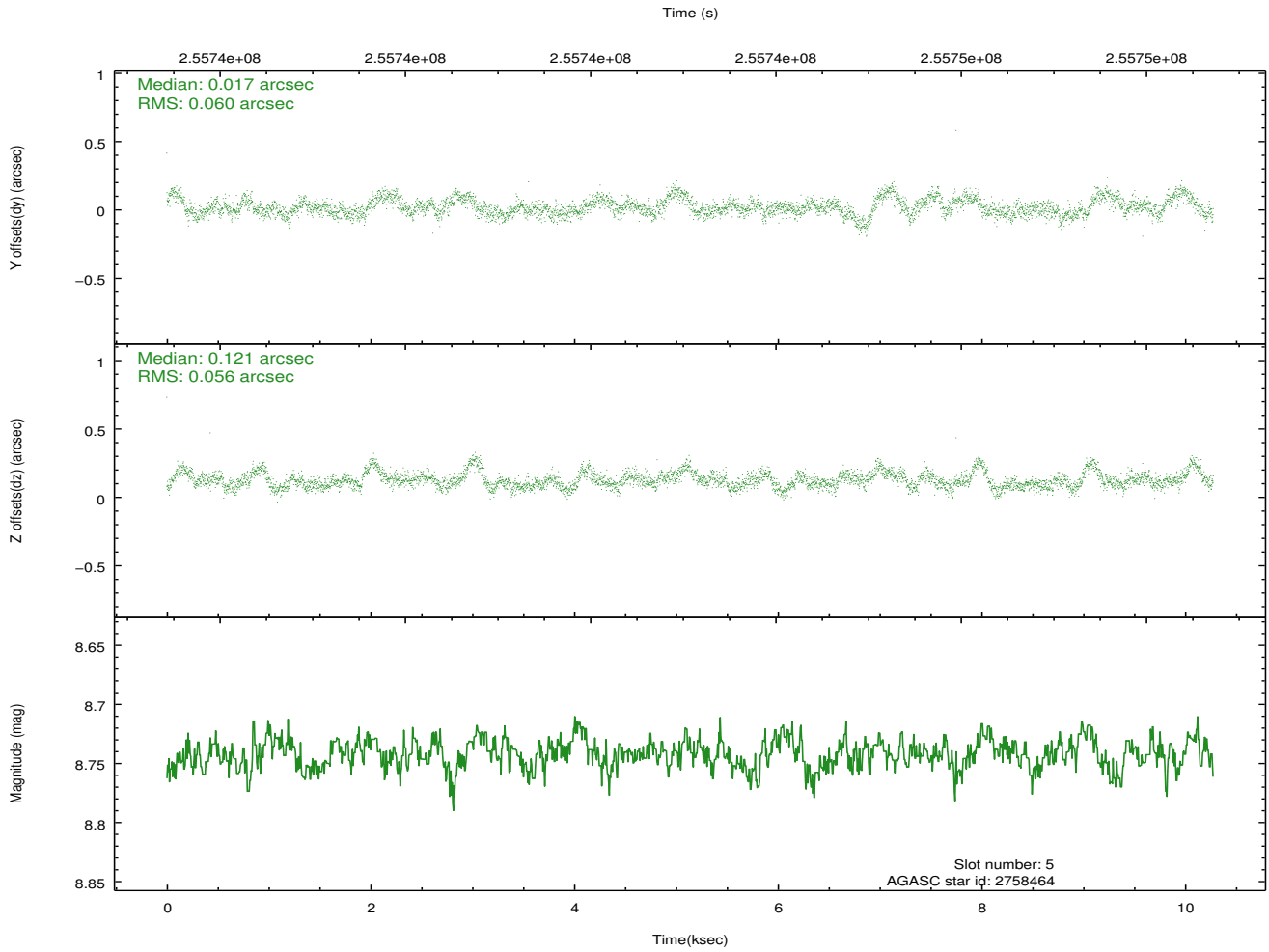
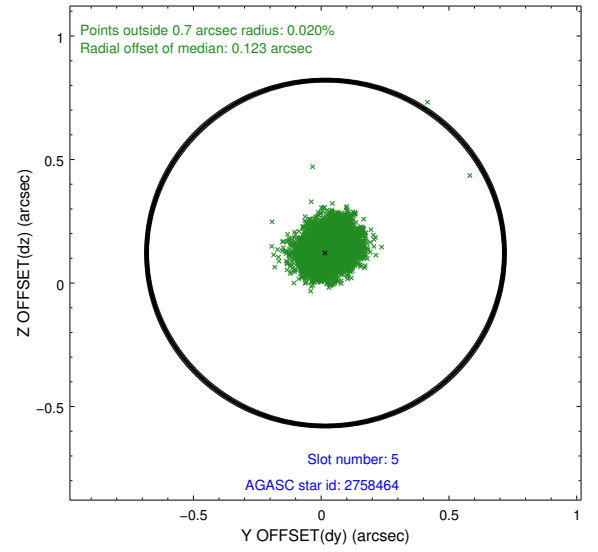
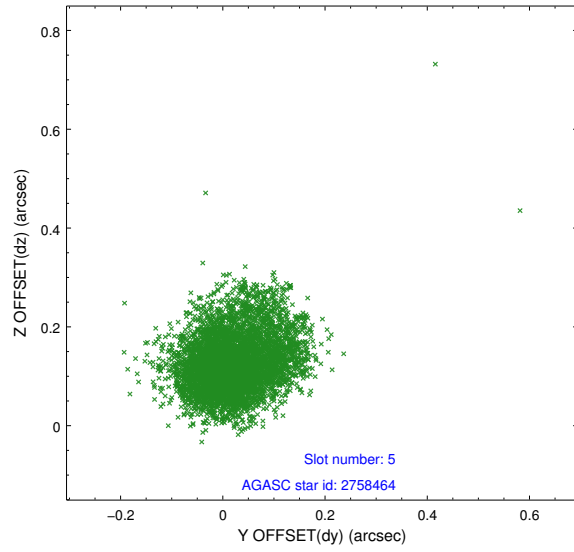
### 2.4.1 Slot 3



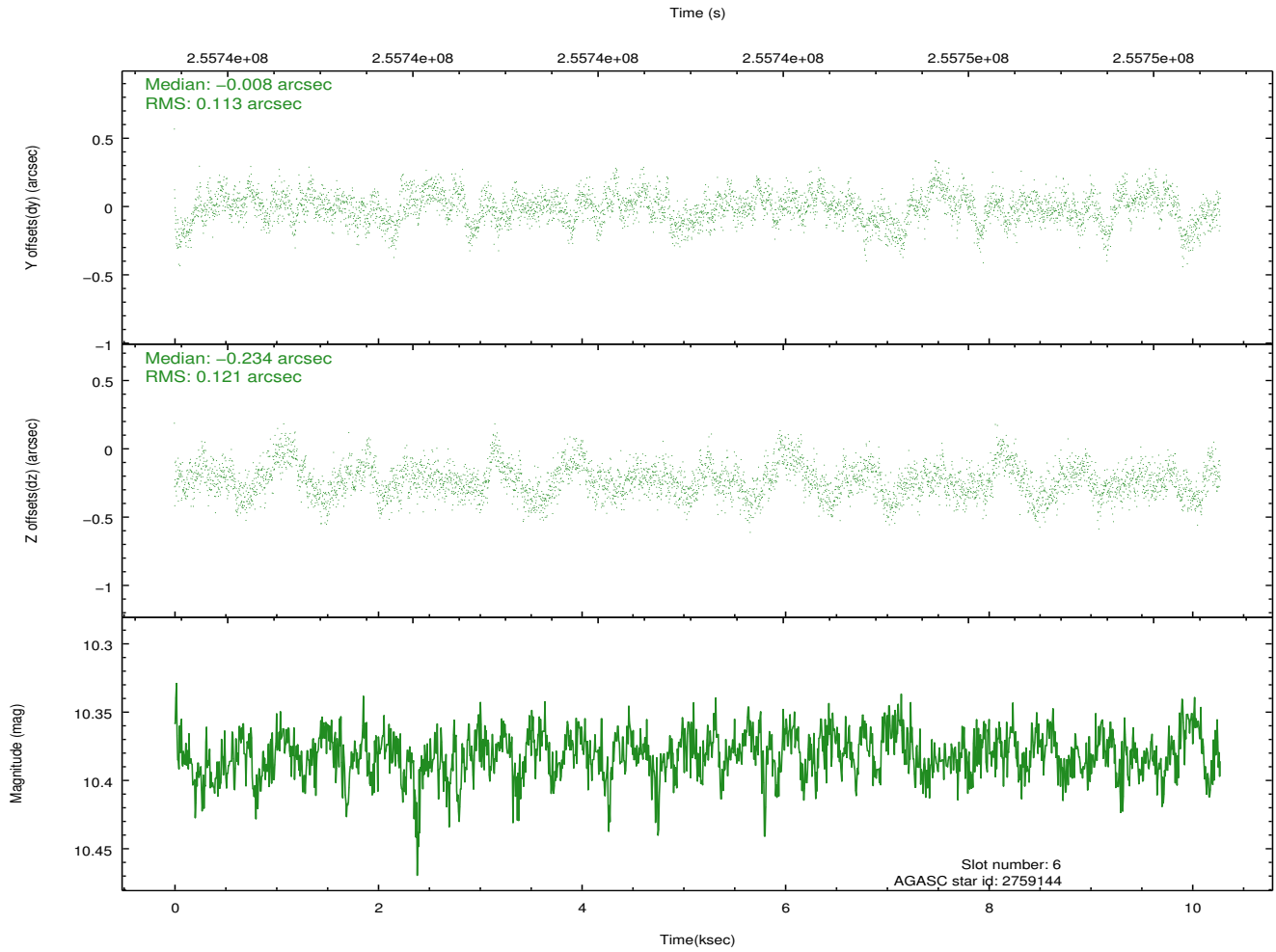
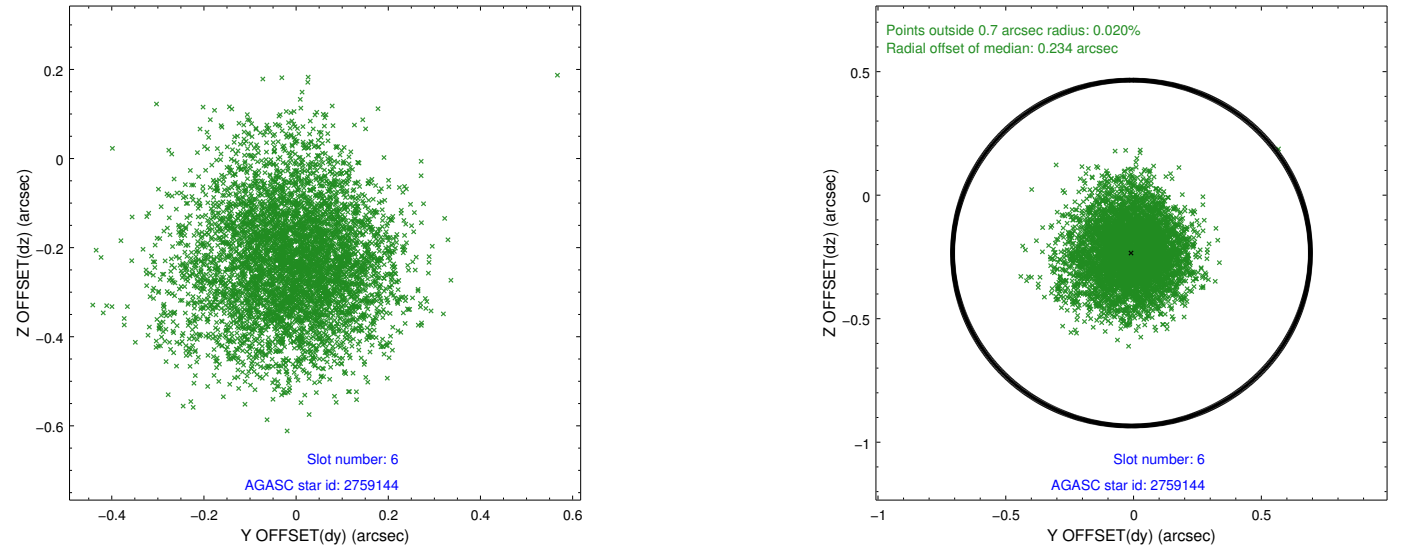
## 2.4.2 Slot 4



### 2.4.3 Slot 5

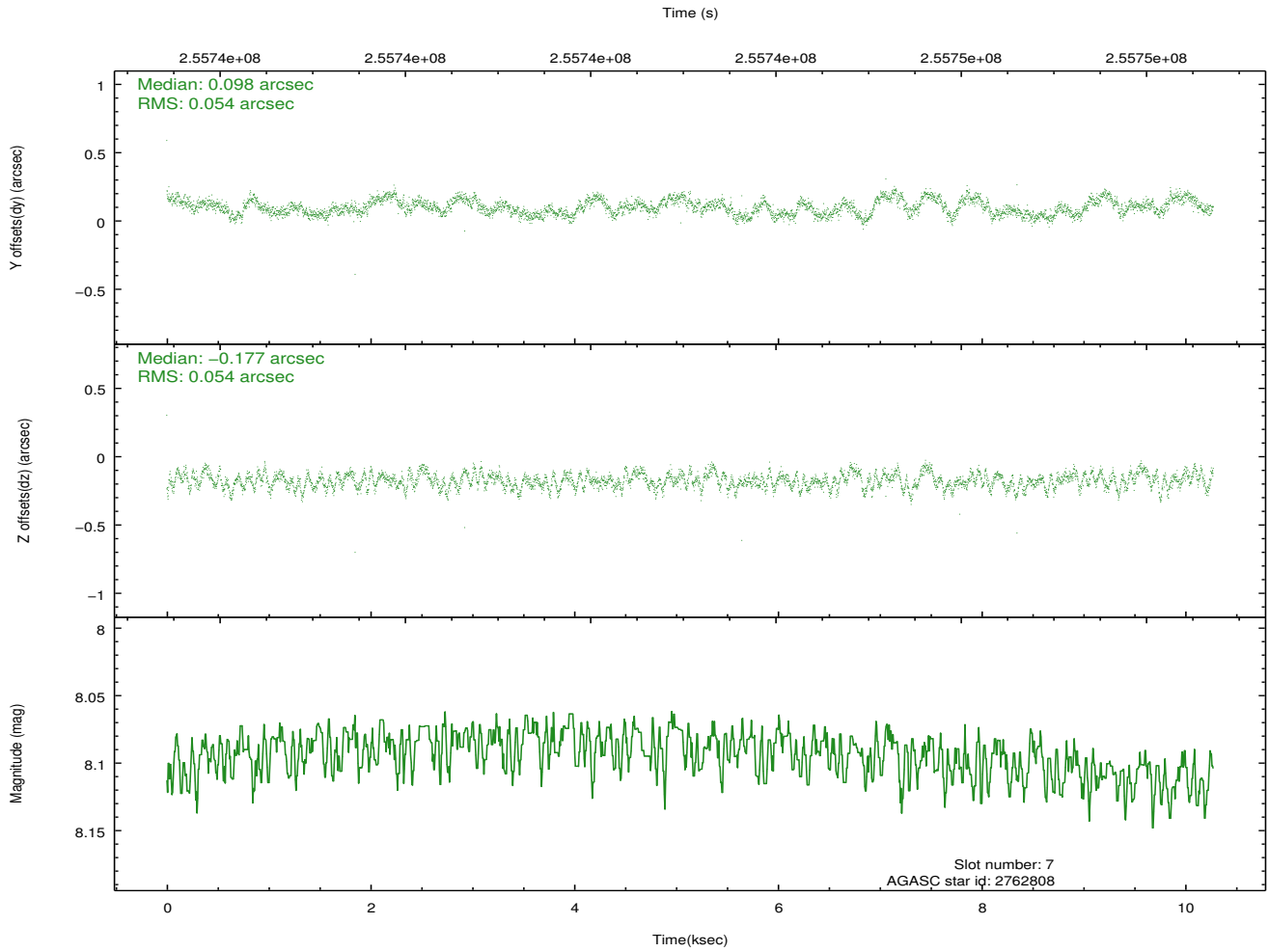
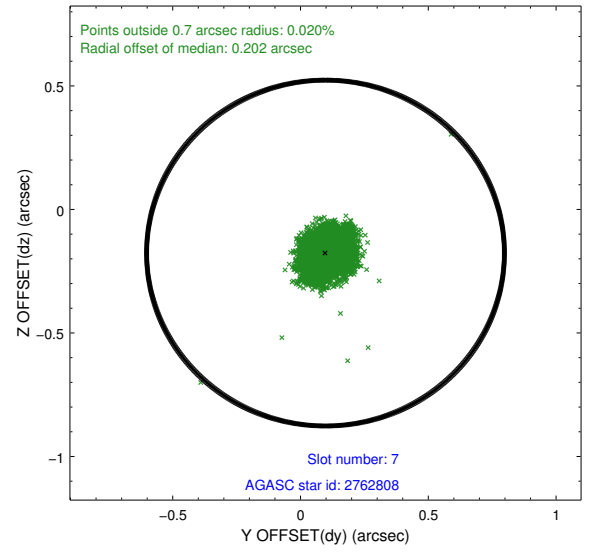
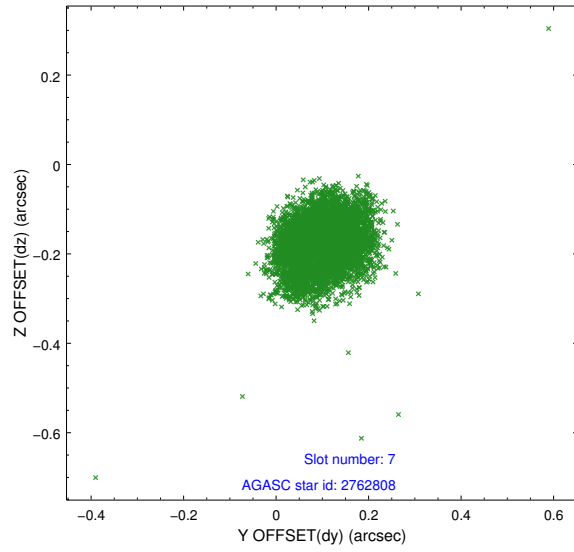


## 2.4.4 Slot 6



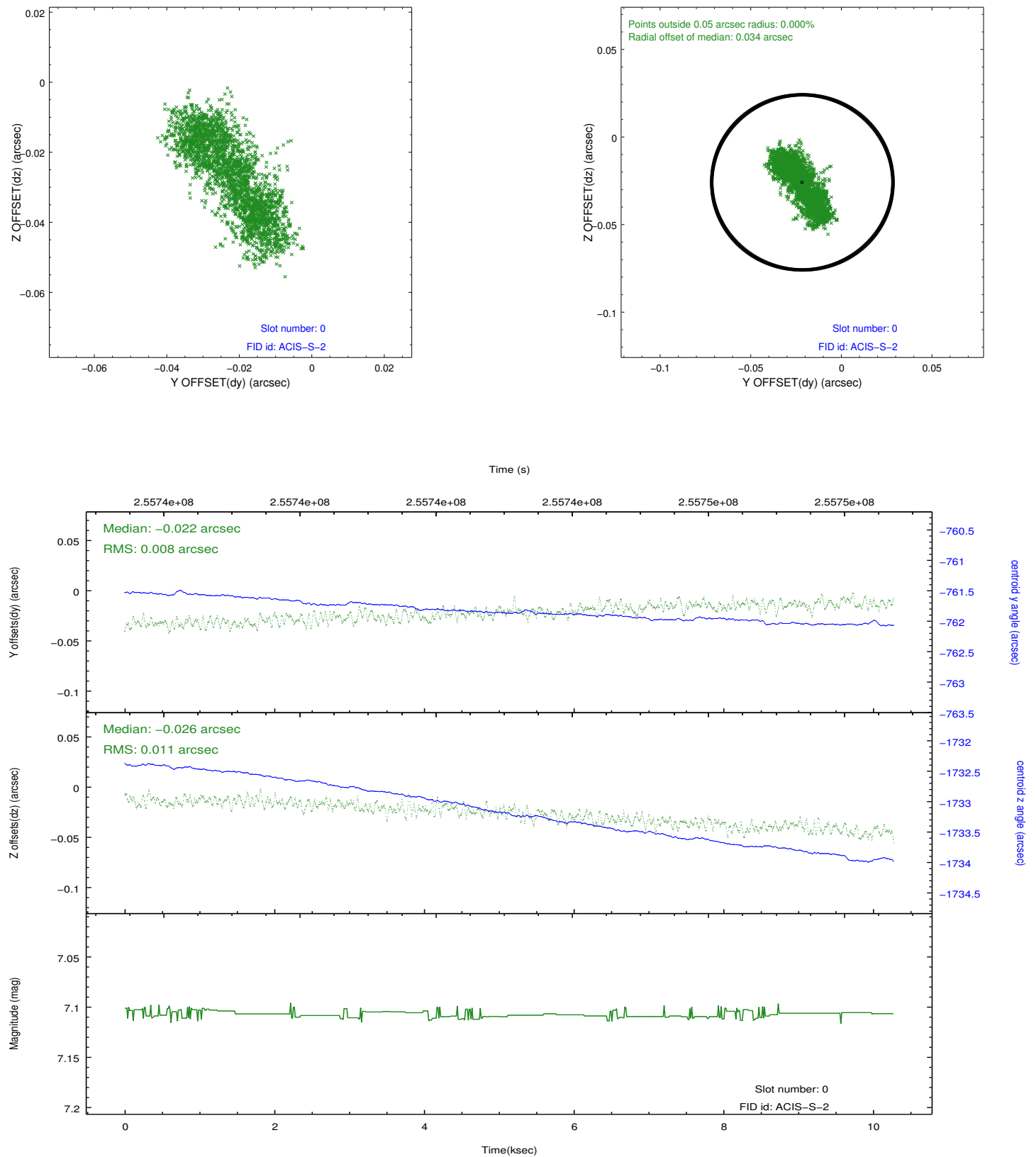


## 2.4.5 Slot 7

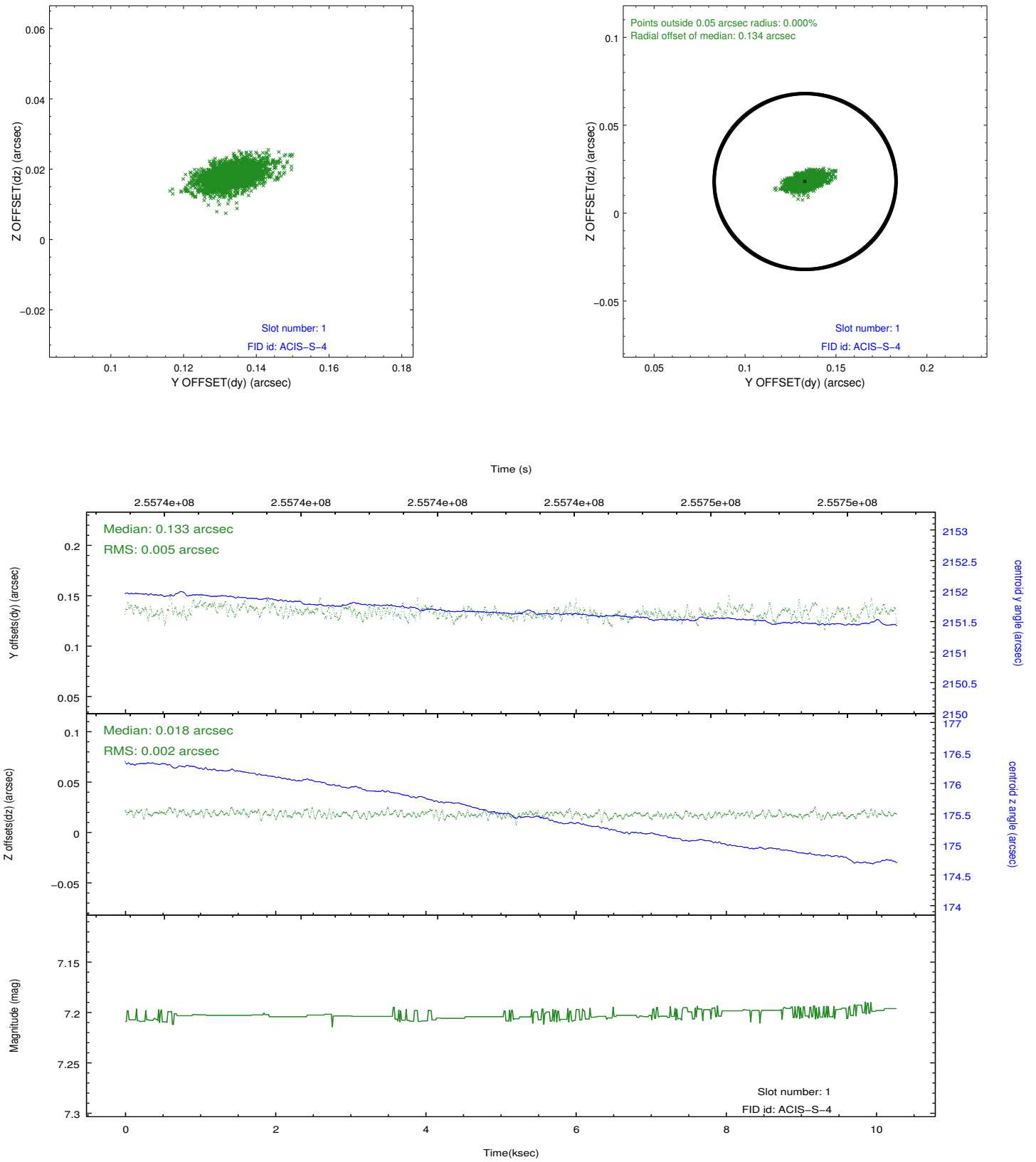


## 2.5 FID Slots

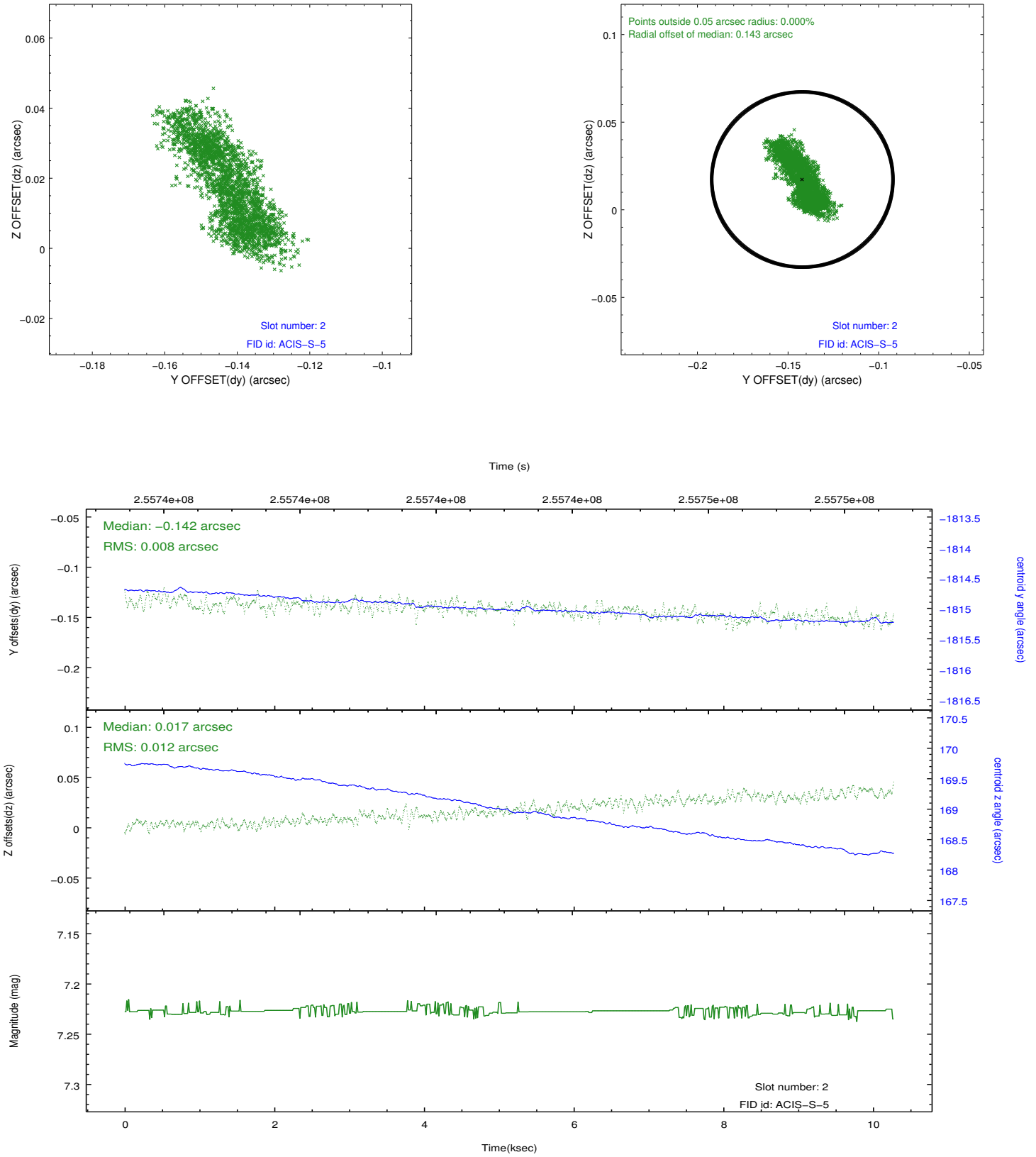
### 2.5.1 Slot 0



## 2.5.2 Slot 1



### 2.5.3 Slot 2



## A Summary

### A.1 Status

V&V Scientist	Jen Lauer
V&V Date (YYYY-MM-DD)	2012.03.27
V&V Edition	1
V&V Disposition and Status	OK
V&V Charge Time	9.95519996

### A.2 Comments