

V&V Reference Report

L2 ASCDS Version : 8.4.3.1

Observation 6782 - L2 Version 2
Chandra X-Ray Center

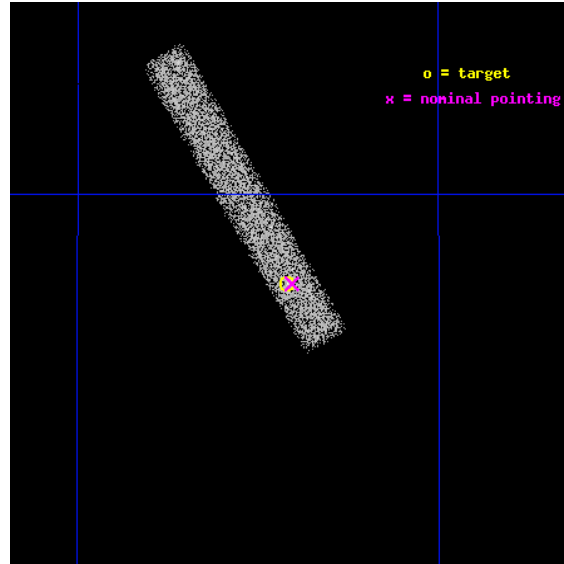
L2 Processing Date : Apr 2 2012

Contents

1	Front	2
2	OBI	3
2.1	OBI	3
2.1.1	Images	3
2.1.2	Bias	3
2.1.3	Parameters	4
2.1.4	Events	4
2.2	Compared Parameters	5
2.3	Aspect	6
2.4	Star Slots	9
2.4.1	Slot 3	9
2.4.2	Slot 4	10
2.4.3	Slot 5	11
2.4.4	Slot 6	12
2.4.5	Slot 7	13
2.5	FID Slots	14
2.5.1	Slot 0	14
2.5.2	Slot 1	15
2.5.3	Slot 2	16
A	Summary	17
A.1	Status	17
A.2	Comments	17

1 Front

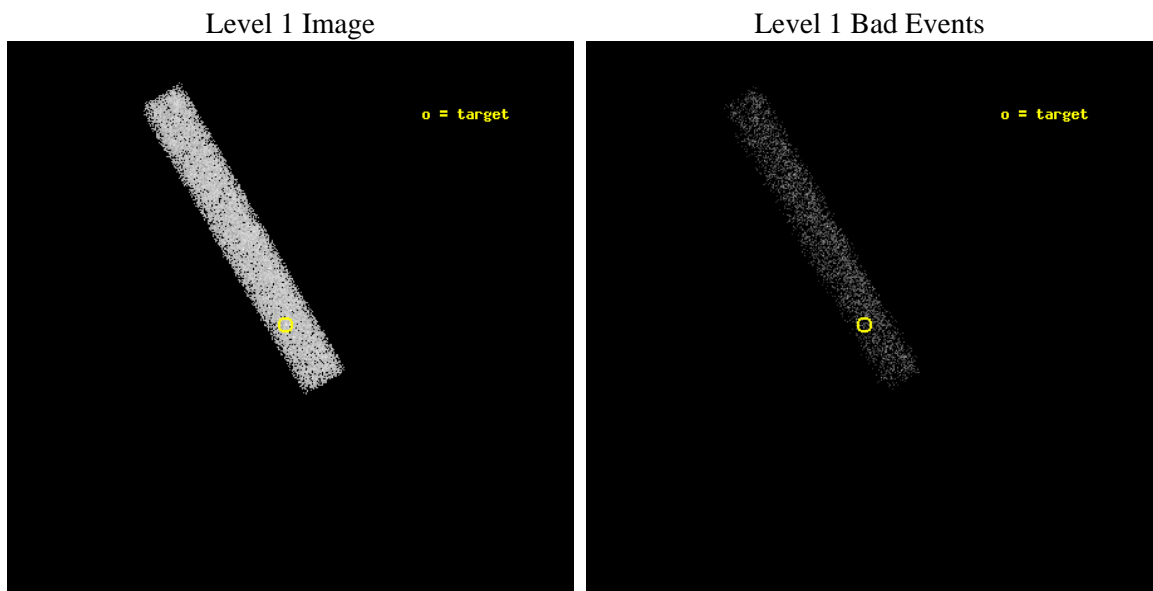
seq_num	701200	Sequence number
obs_id	6782	Observation id
title	Active Galactic Nuclei in nearby galaxies: a new view of the origin of the radio-loud radio-quiet dichotomy?	Proposal title
observer	Dr. Alessandro Capetti	Principal investigator
object	UGC6985	Source name
dtcycle	0	
cycle	P	events from which exps? Prim/Second/Both
ra_targ	179.855	Observer's specified target RA [deg]
dec_targ	50.961667	Observer's specified target Dec [deg]
ra_nom	179.85173206162	Nominal RA [deg]
dec_nom	50.961413755447	Nominal Dec [deg]
roll_nom	239.85801357144	Nominal Roll [deg]
revision	2	Processing version of data
ontime	15184.400226235	Sum of GTIs [s]
livetime	13771.449506834	Livetime [s]
ontime7	15184.400226235	Sum of GTIs [s]
l2events	10949	Number of level 2 events



2 OBI

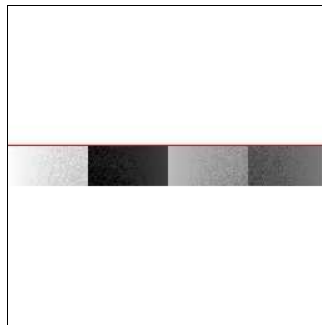
2.1 OBI

2.1.1 Images



2.1.2 Bias

Chip 7



2.1.3 Parameters

obi_num	0	Obi number	sched_exp_time	15000.000000	[s] Scheduled observation exposure time
ascdsver	8.4.3	Processing system revision	ontime	15184.400226235	Sum of GTIs [s]
caldsver	4.4.9	 	ontime7	15184.400226235	Sum of GTIs [s]
date	2012-04-02T05:56:10	Date and time of file creation	l1events	25941	Number of level 1 events
revision	2	Processing version of data			

2.1.4 Events

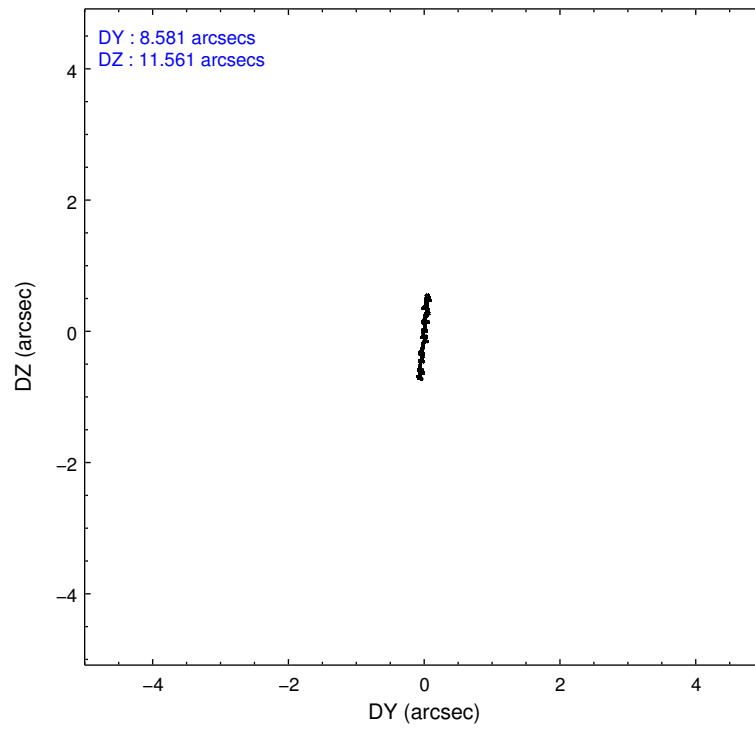
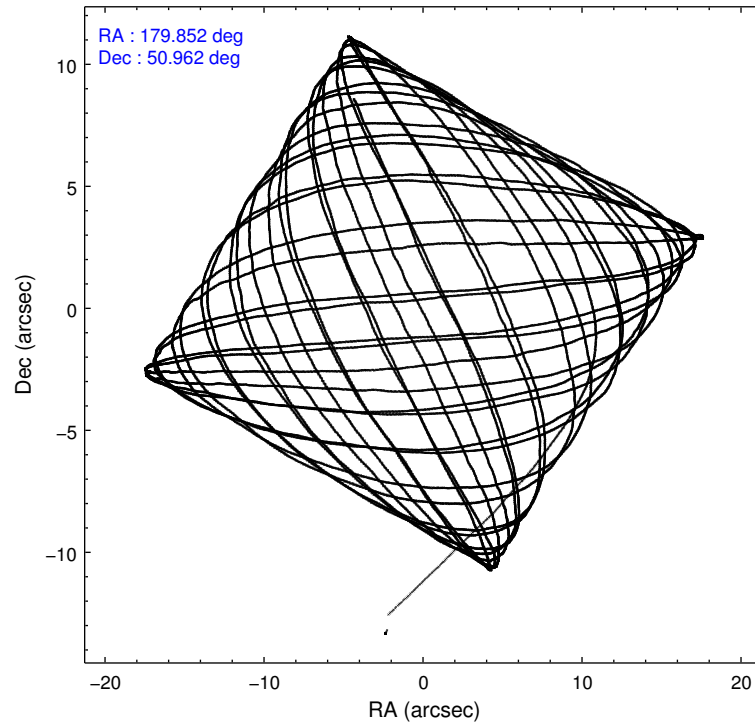
	ccd 7
level 1 events	25941
rejected events	14549
rejected %	56%

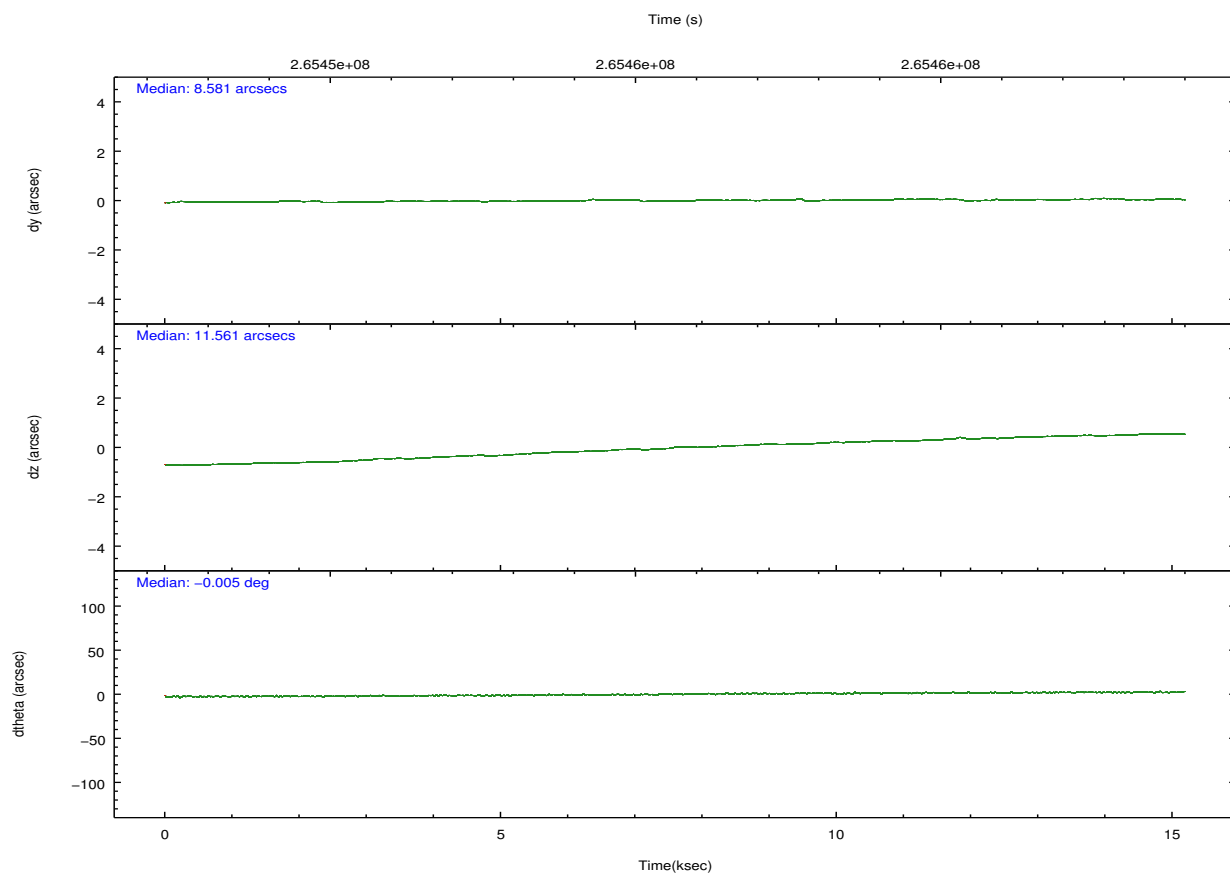
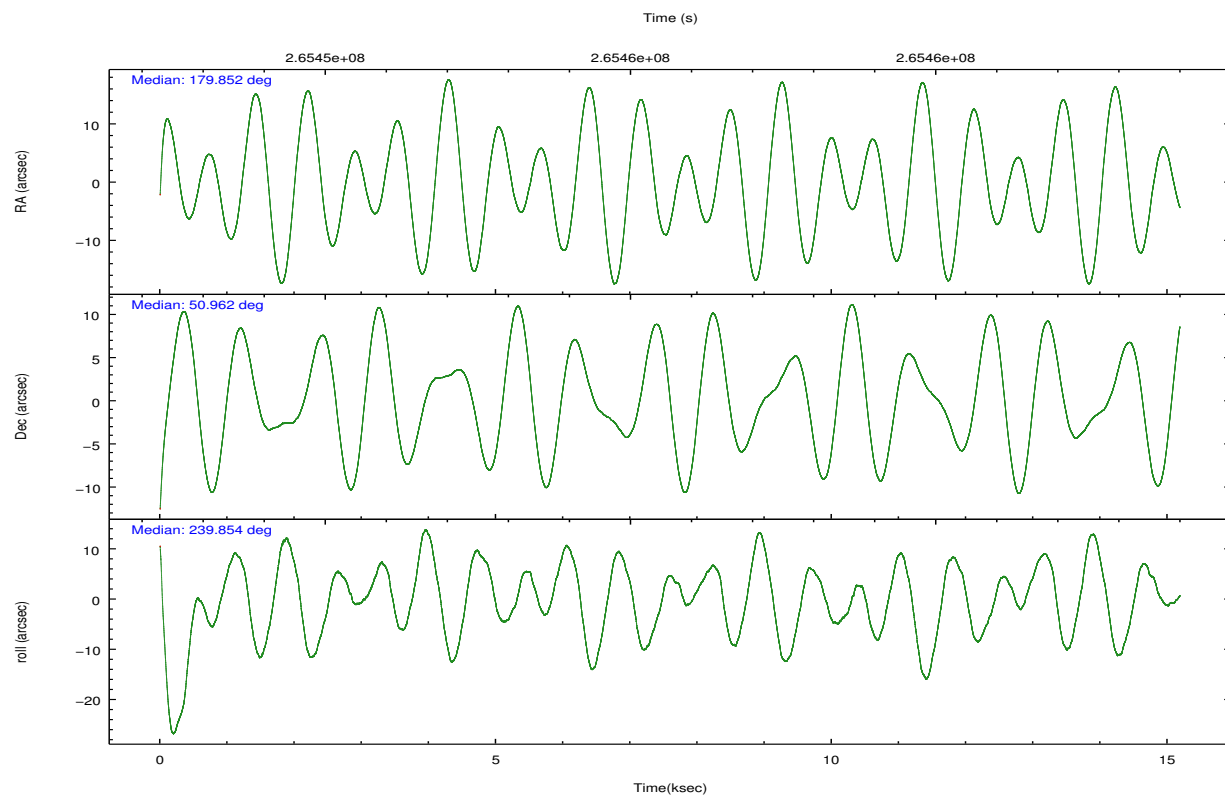
	ccd 7
grade 0 events	1178
	4%
grade 1 events	32
	0%
grade 2 events	2352
	9%
grade 3 events	1593
	6%
grade 4 events	1480
	5%
grade 5 events	2423
	9%
grade 6 events	5478
	21%
grade 7 events	11405
	43%

2.2 Compared Parameters

Parameter	Planned	Actual	Parameter	Planned	Actual
Instrument	ACIS	ACIS	Obspar format version number	7	7
Detector	ACIS-7	ACIS-7	Obspar file type	PREDICTED	ACTUAL
Grating	NONE	NONE	Obspar update status	NONE	UPDATED
Data mode	VFAINT	VFAINT	Number of optional ACIS chips dropped	0	0
Observation mode	POINTING	POINTING	On-chip summing requested	N	N
[deg] Pointing RA	179.851236	179.8517320616228	Subarray requested	CUSTOM	1/8
[deg] Pointing Dec	50.988661	50.96141375544699	Subarray start row	449	449
[deg] Pointing Roll	239.701758	239.8580135714381	Subarray row count	128	128
[mm] SIM focus pos	-0.684267	-0.6828225247311905	Alternating exposures requested	N	N
[mm] SIM defocus	0	0.001444936568705701	[s] Primary exposure time	0.000000	0.4
[mm] SIM translation stage pos	-190.132523	-190.1400660498719			
[mm] SIM translation stage offset	0	0.00754346686406393			
[s] Observation start time (MET)	265448240.184000	265447105.99502			
Observation start date	2006-05-31T07:36:15	2006-05-31T07:18:25			
[s] Observation end time (MET)	265463240.184000	265463513.68329			
Observation end date	2006-05-31T11:46:15	2006-05-31T11:51:53			
Read mode	TIMED	TIMED			

2.3 Aspect



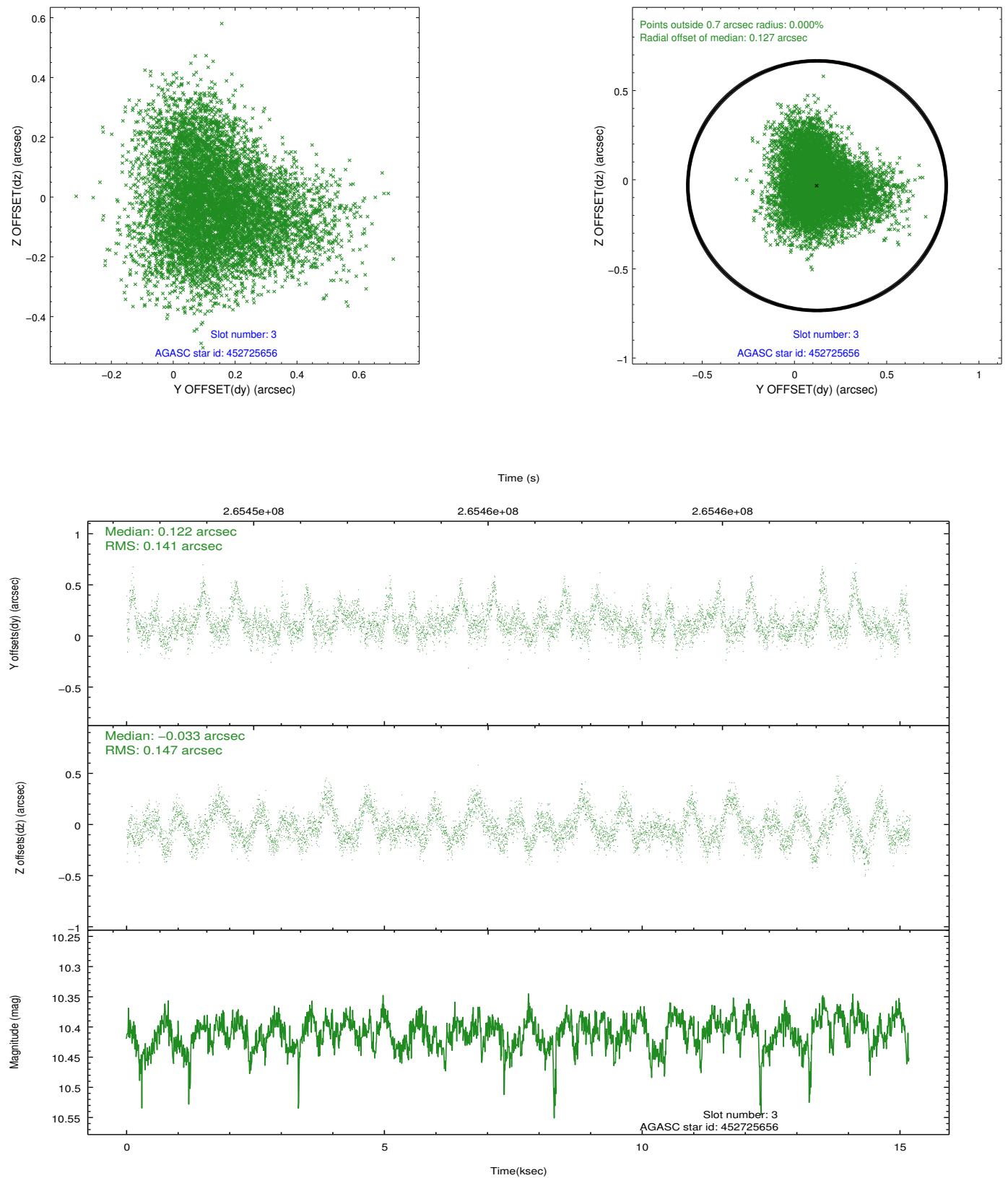


Slot Statistics

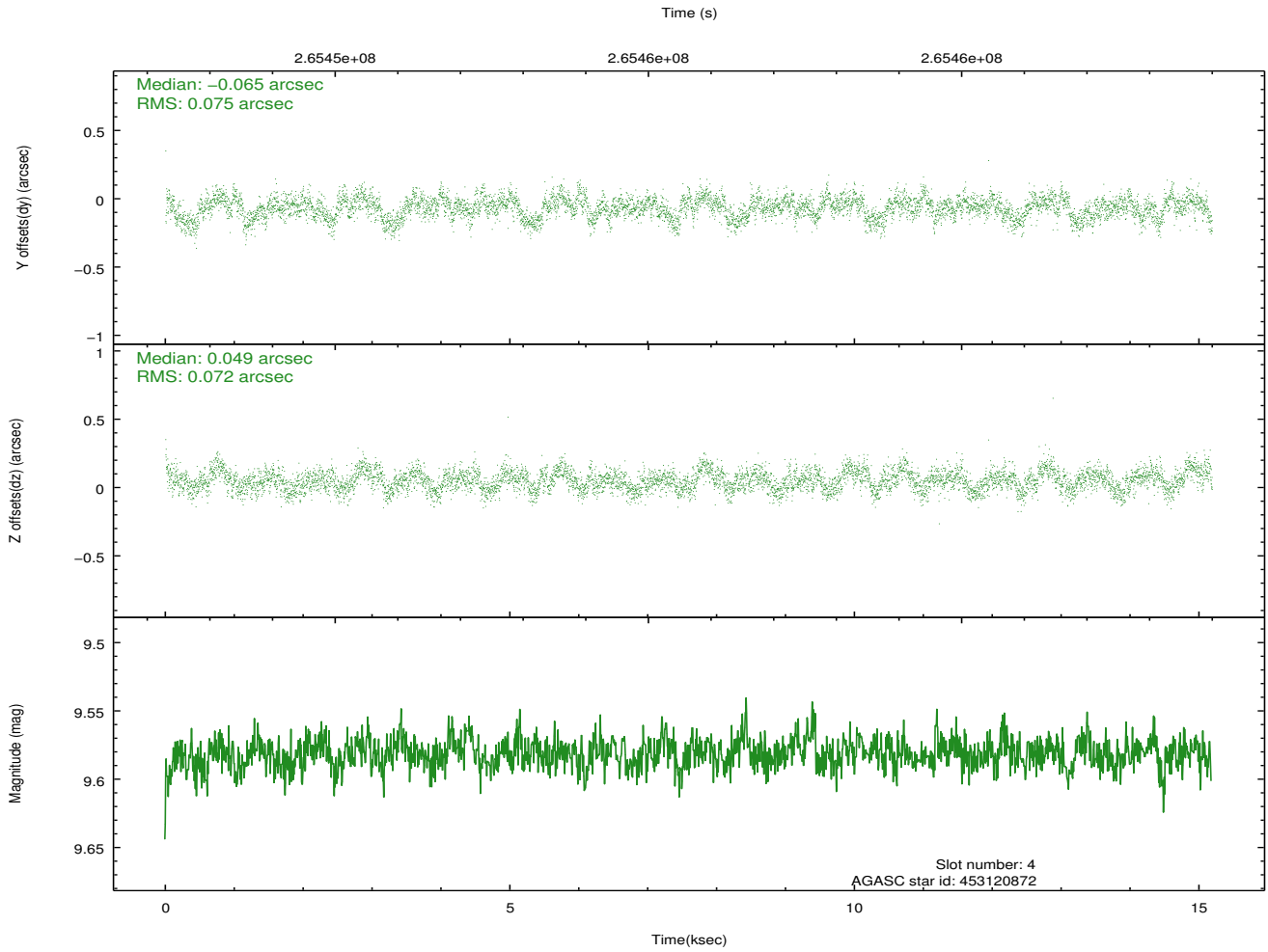
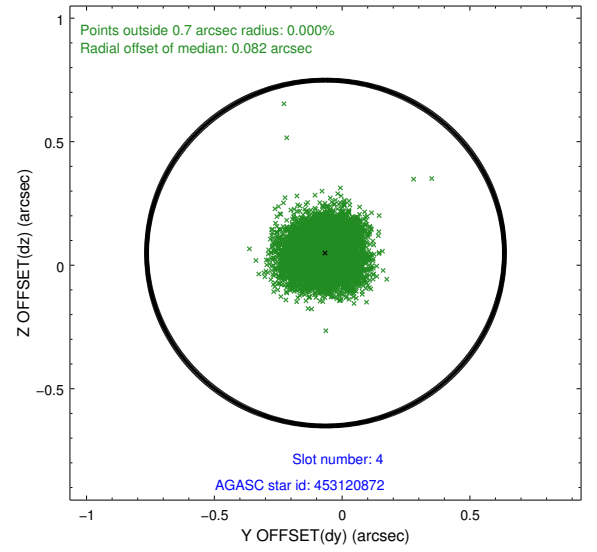
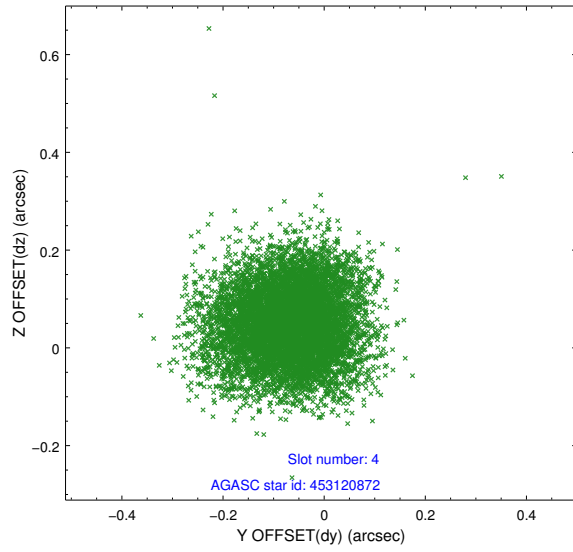
slot	status	id	mag	n_pts	med_dy	med_dz	dr1	dr2	ra	dec	mean_y	mean_z
0	FID	ACIS-S-2	7.10	3704	-0.024	-0.018	0.014	0.021	0.000000	0.000000	-761.38	-1732.82
1	FID	ACIS-S-4	7.21	3705	0.127	0.017	0.008	0.013	0.000000	0.000000	2151.90	175.42
2	FID	ACIS-S-5	7.23	3704	-0.135	0.010	0.013	0.021	0.000000	0.000000	-1813.97	169.39
3	GUIDE	452725656	10.41	7372	0.122	-0.033	0.217	0.354	179.913739	50.419541	1697.50	1157.82
4	GUIDE	453120872	9.58	7404	-0.065	0.049	0.111	0.179	180.306453	50.720520	307.73	1381.52
5	GUIDE	453121104	10.60	7386	-0.047	0.102	0.263	0.470	180.133682	51.367755	-1498.98	-140.24
6	GUIDE	453121760	9.15	7398	-0.103	-0.064	0.089	0.145	180.573551	51.345103	-1934.26	750.81
7	GUIDE	452726840	8.98	7401	0.079	-0.067	0.112	0.179	178.872024	51.002472	1064.38	-1947.21

2.4 Star Slots

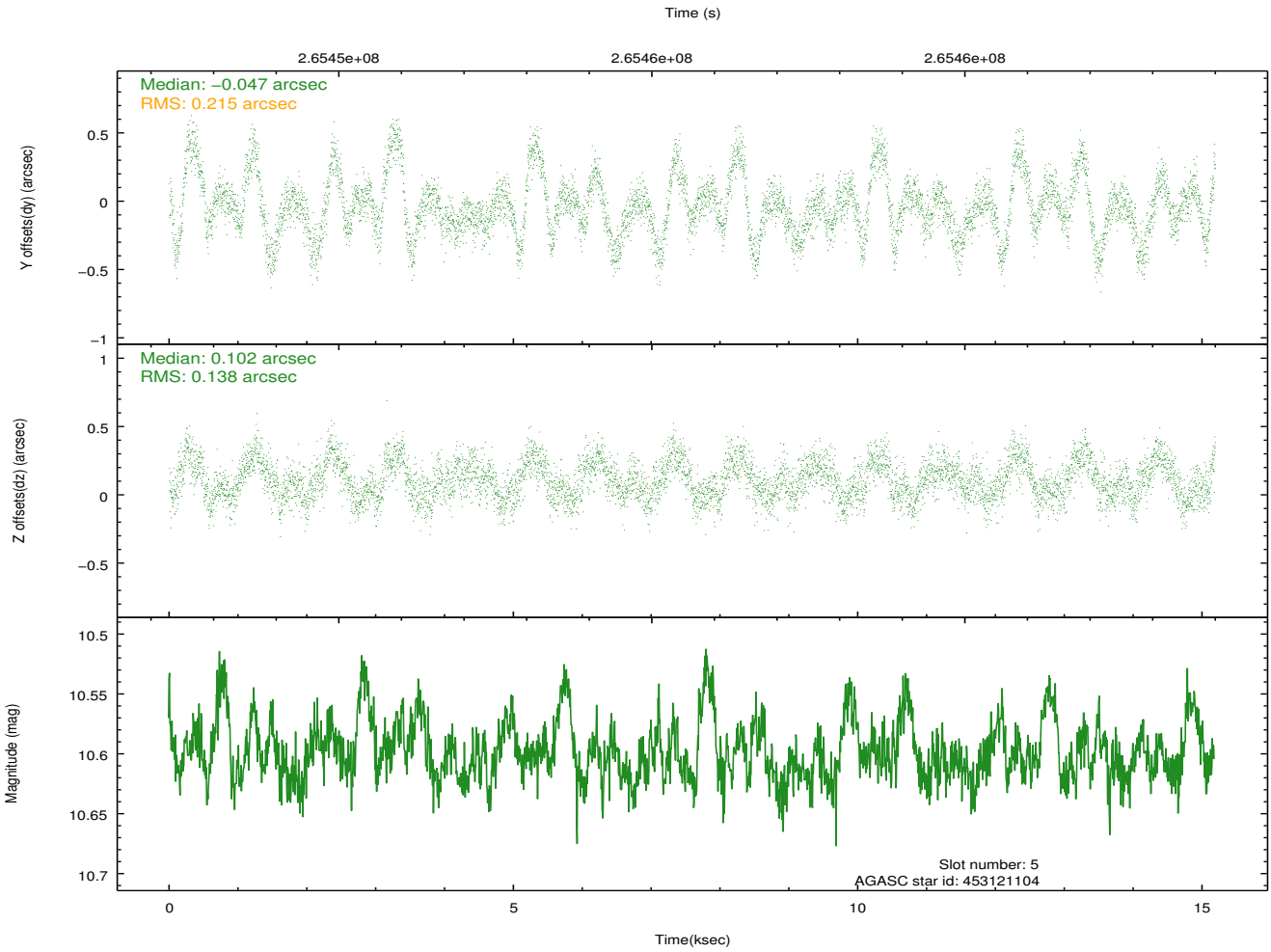
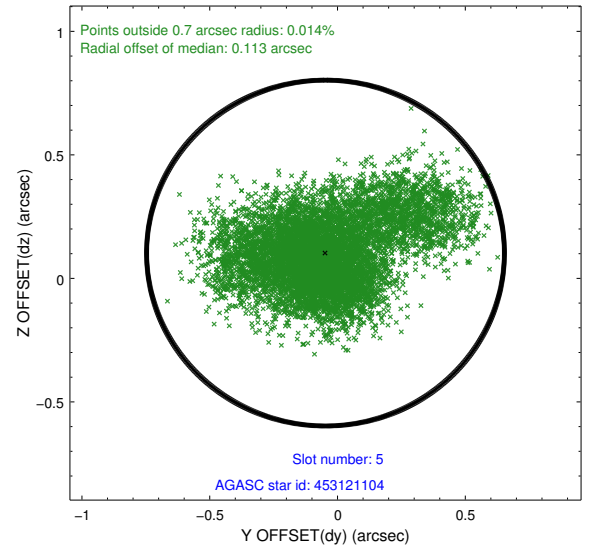
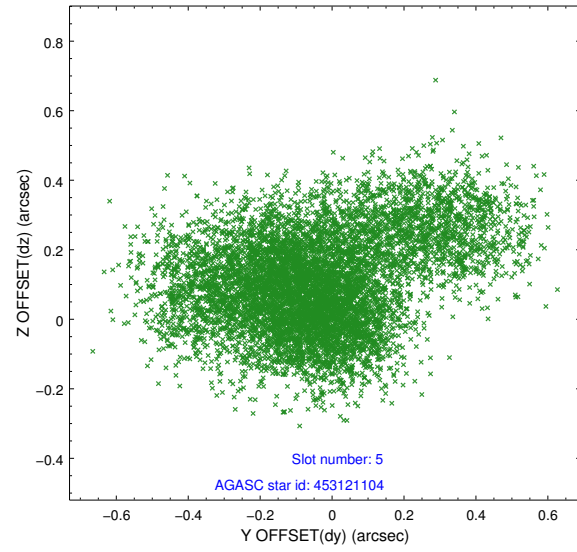
2.4.1 Slot 3



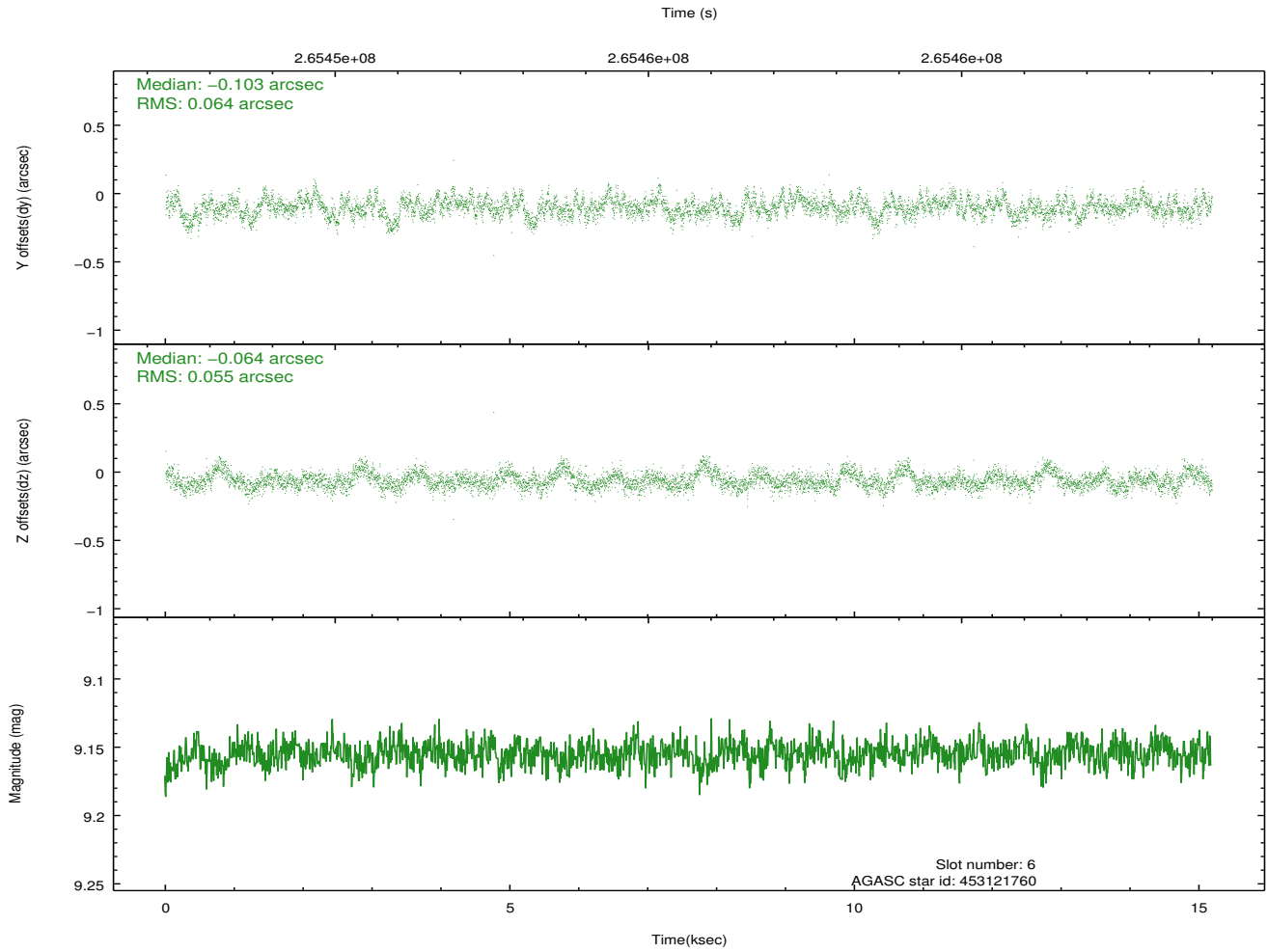
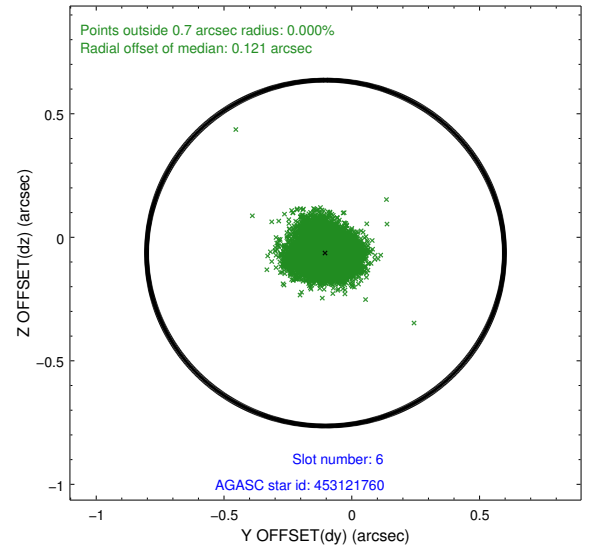
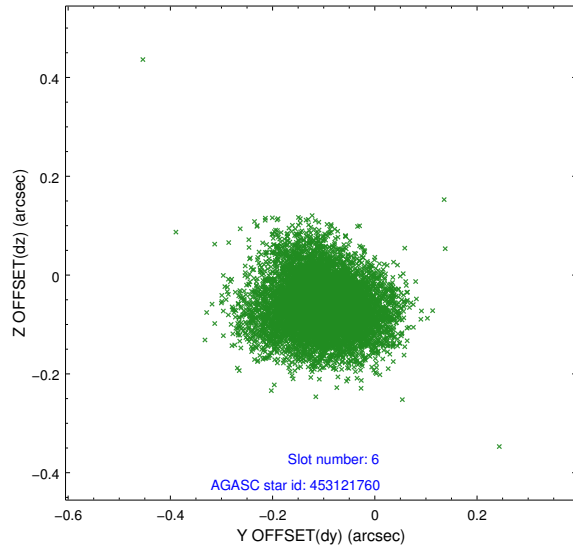
2.4.2 Slot 4



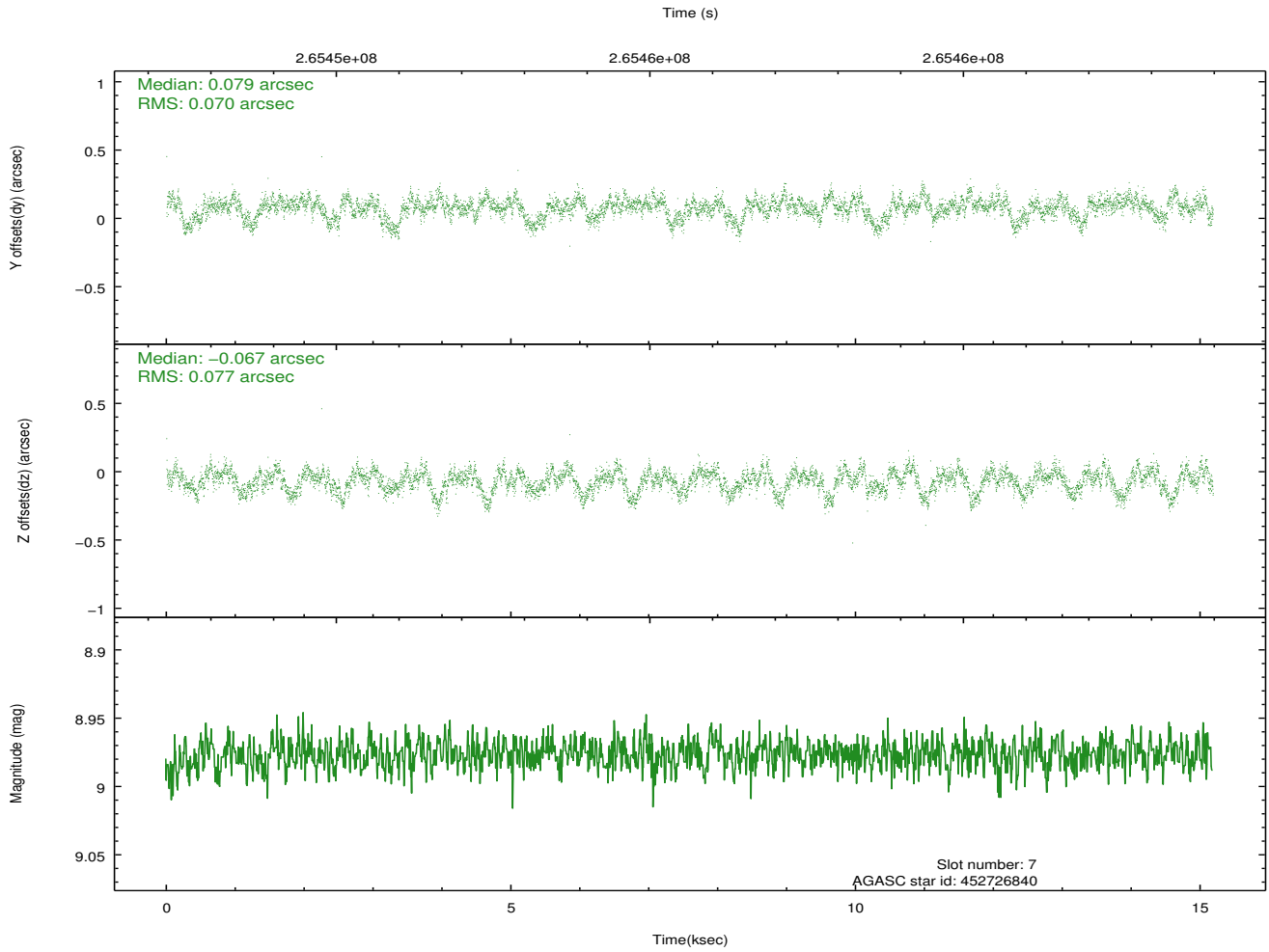
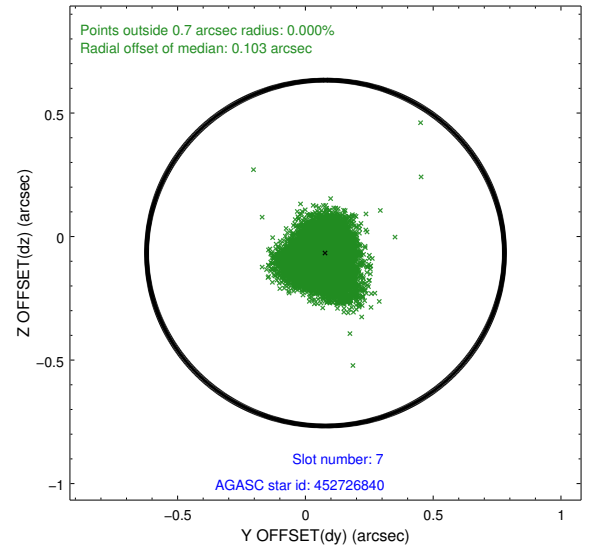
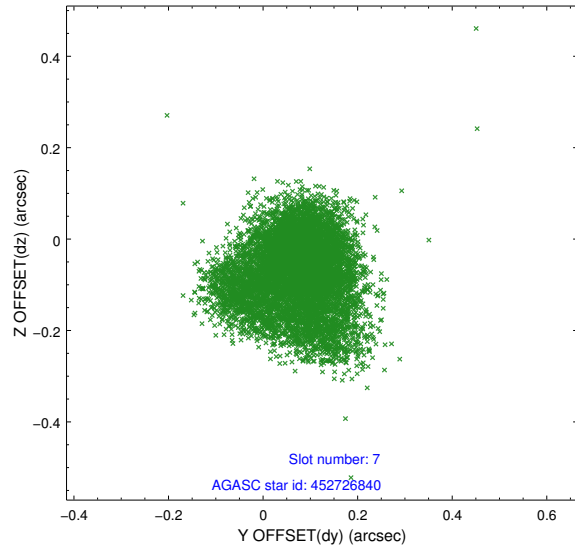
2.4.3 Slot 5



2.4.4 Slot 6

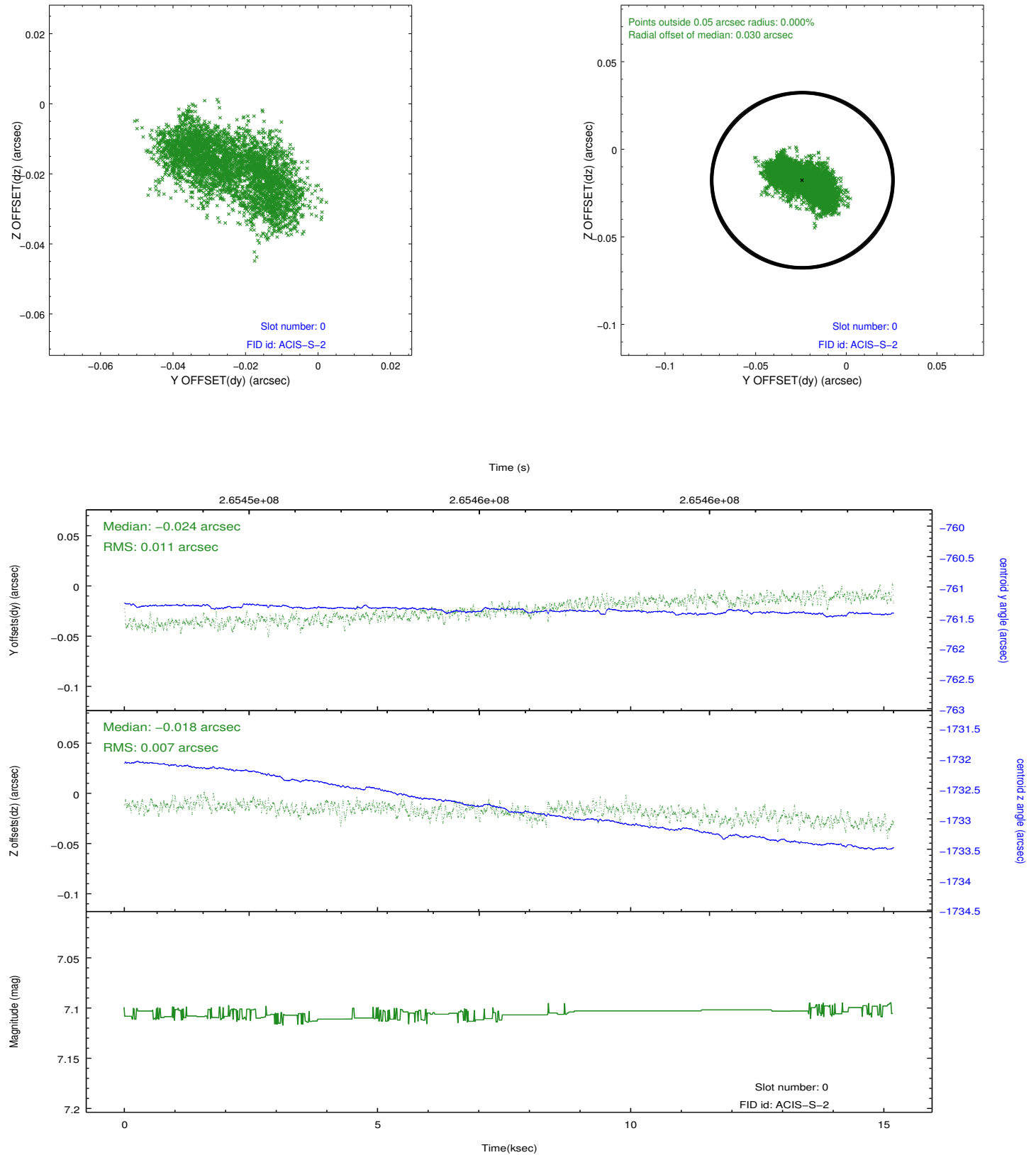


2.4.5 Slot 7

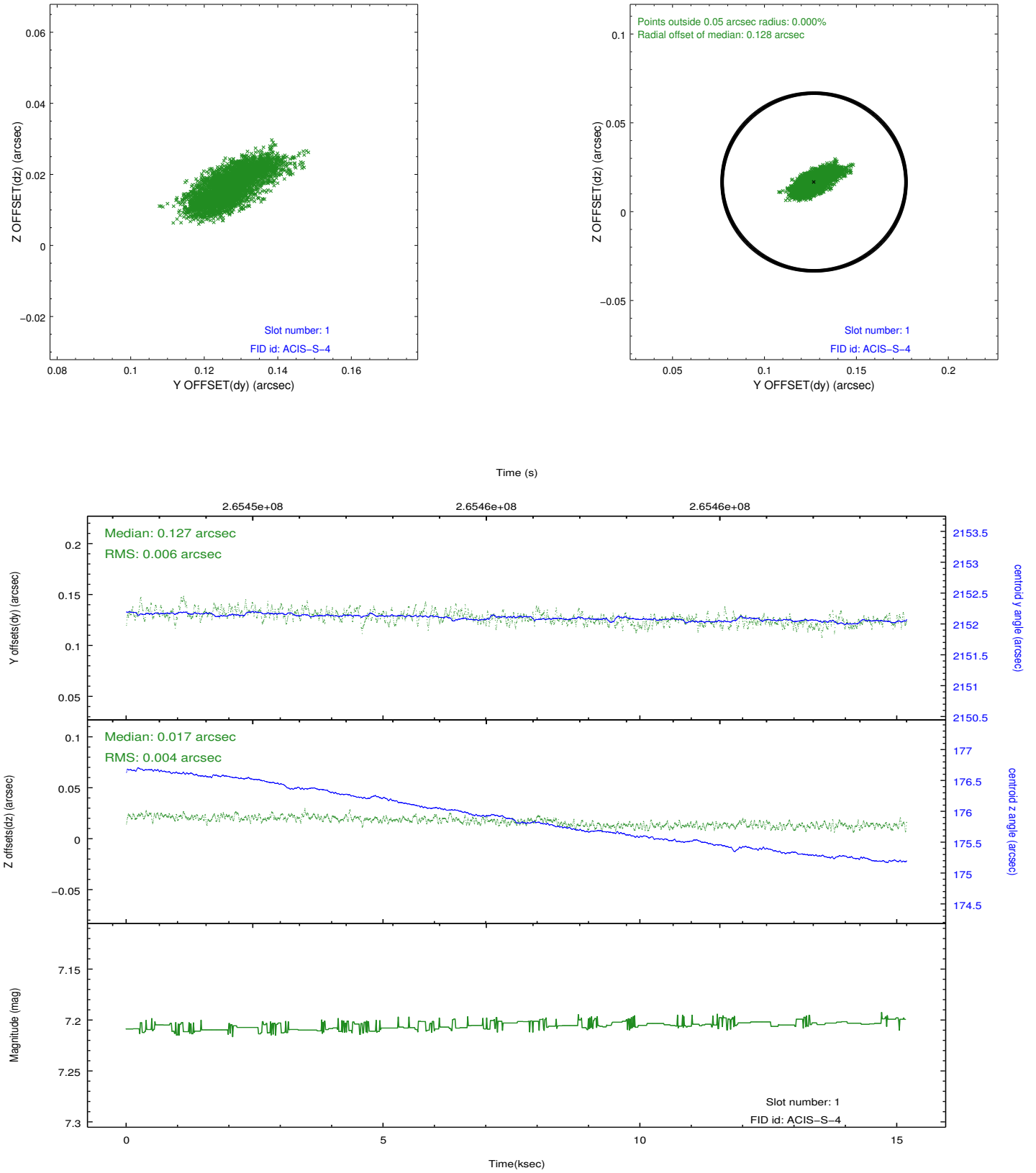


2.5 FID Slots

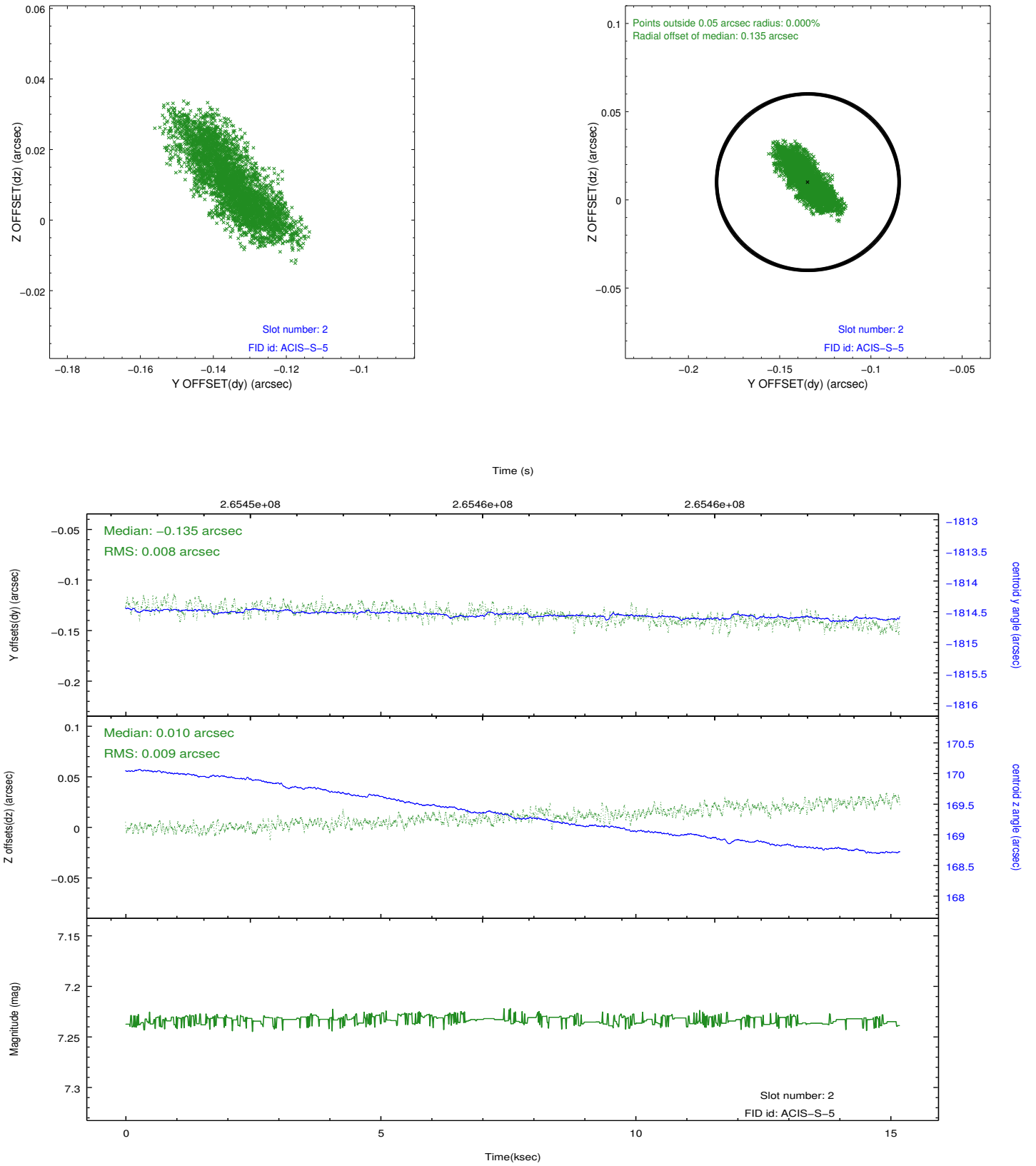
2.5.1 Slot 0



2.5.2 Slot 1



2.5.3 Slot 2



A Summary

A.1 Status

V&V Scientist	Jen Lauer
V&V Date (YYYY-MM-DD)	2012.04.03
V&V Edition	1
V&V Disposition and Status	OK
V&V Charge Time	15.1844002

A.2 Comments