

V&V Reference Report

L2 ASCDS Version : 8.1.1

Observation 672 - L2 Version 6

Chandra X-Ray Center

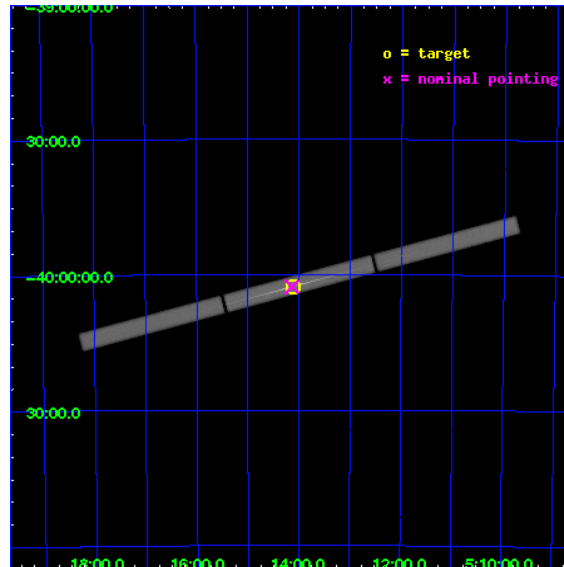
L2 Processing Date : Nov 26 2009

Contents

1	Front	2
2	OBI	3
2.1	OBI	3
2.1.1	Images	3
2.1.2	Parameters	4
2.1.3	Events	4
2.2	Compared Parameters	5
2.3	Aspect	6
2.4	Star Slots	9
2.4.1	Slot 3	9
2.4.2	Slot 4	10
2.4.3	Slot 5	11
2.4.4	Slot 6	12
2.4.5	Slot 7	13
2.5	FID Slots	14
2.5.1	Slot 0	14
2.5.2	Slot 1	15
2.5.3	Slot 2	16
3	Gratings	17
3.1	LETG Arm	17
A	Summary	19
A.1	Status	19
A.2	Comments	19

1 Front

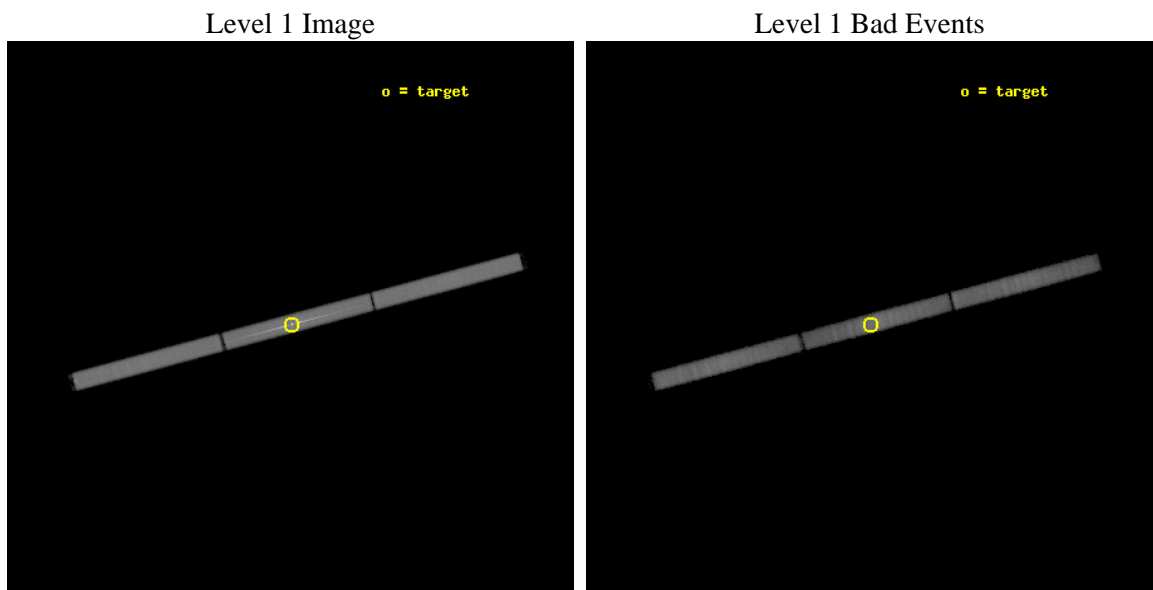
seq_num	400039	Sequence number
obs_id	672	Observation id
title	THE LUMINOUS BURSTING X-RAY SOURCES IN GLOBULAR CLUSTER CORES: LOCATION, LOCATION, AND LOCATION	Proposal title
observer	Dr. Bruce Margon	Principal investigator
object	NGC 1851	Source name
ra_targ	78.5275	Observer's specified target RA
dec_targ	-40.043556	Observer's specified target Dec
ra_nom	78.534072716199	Nominal RA
dec_nom	-40.045301800344	Nominal Dec
roll_nom	345.00967559865	Nominal Roll
revision	6	Processing version of data
ontime	12212.106692471	[s]
livetime	12121.746976728	Ontime multiplied by DTCOR
l2events	682659	Number of level 2 events



2 OBI

2.1 OBI

2.1.1 Images



2.1.2 Parameters

obi_num	0	Obi number	sched_exp_time	12000.000000	Scheduled observation exposure time
ascdsver	8.1.1	Processing system revision	ontime	12212.106692471	[s]
caldbver	4.1.4	 	ll events	1025454	Number of level 1 events
date	2009-11-26T09:13:54	Date and time of file creation			
revision	5	Processing version of data			

2.1.3 Events

Level 1 Events

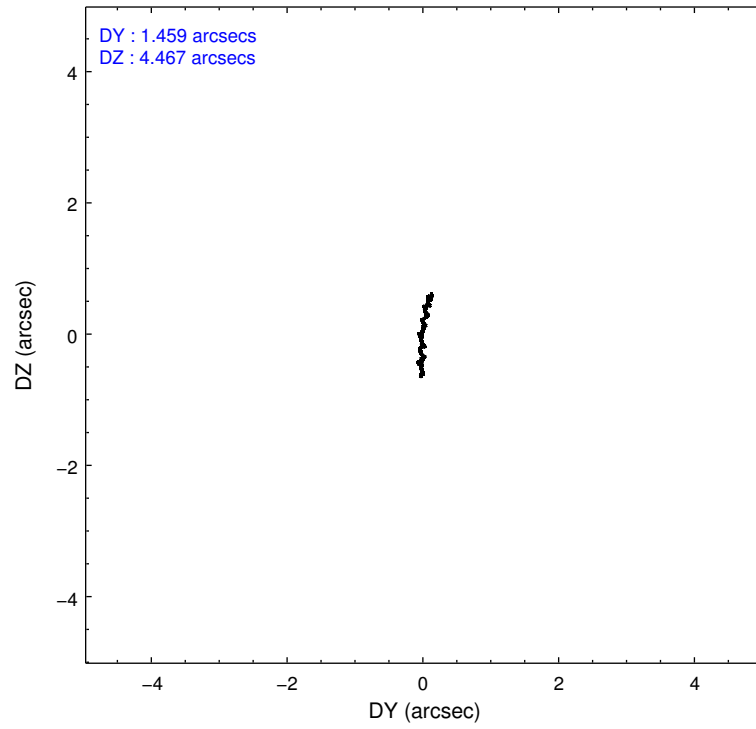
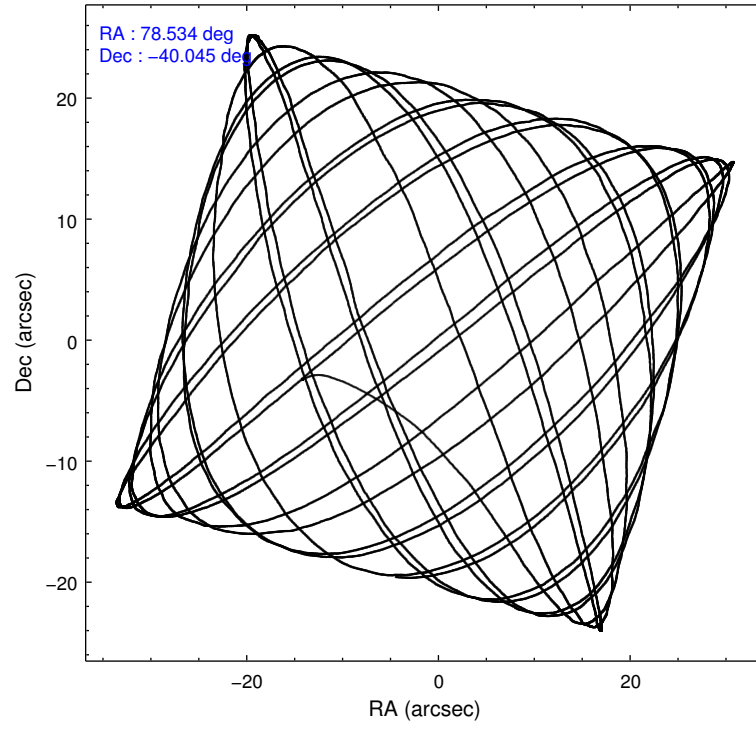
	segment 1	segment 2	segment 3
level 1 events	318609	390801	316044
rejected events	78879	84930	96717
rejected %	24%	21%	30%

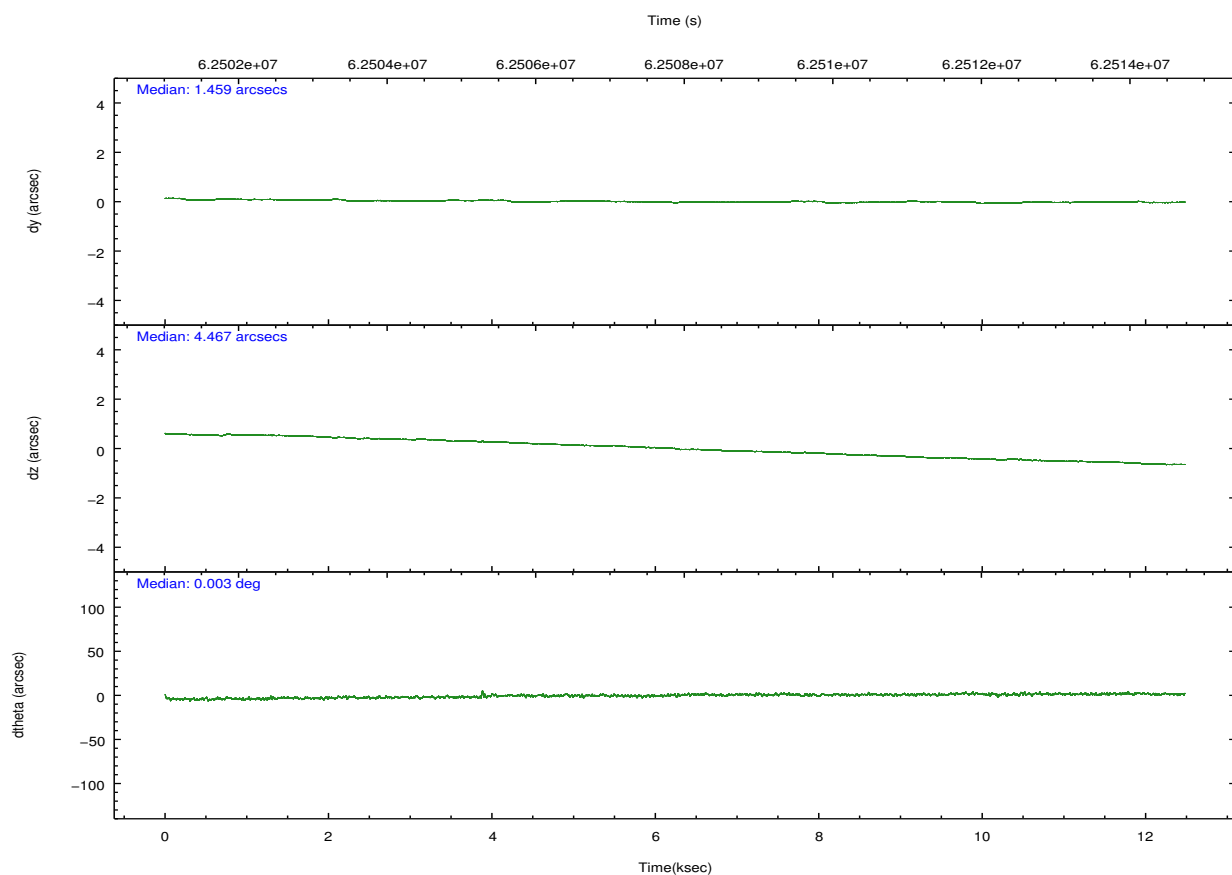
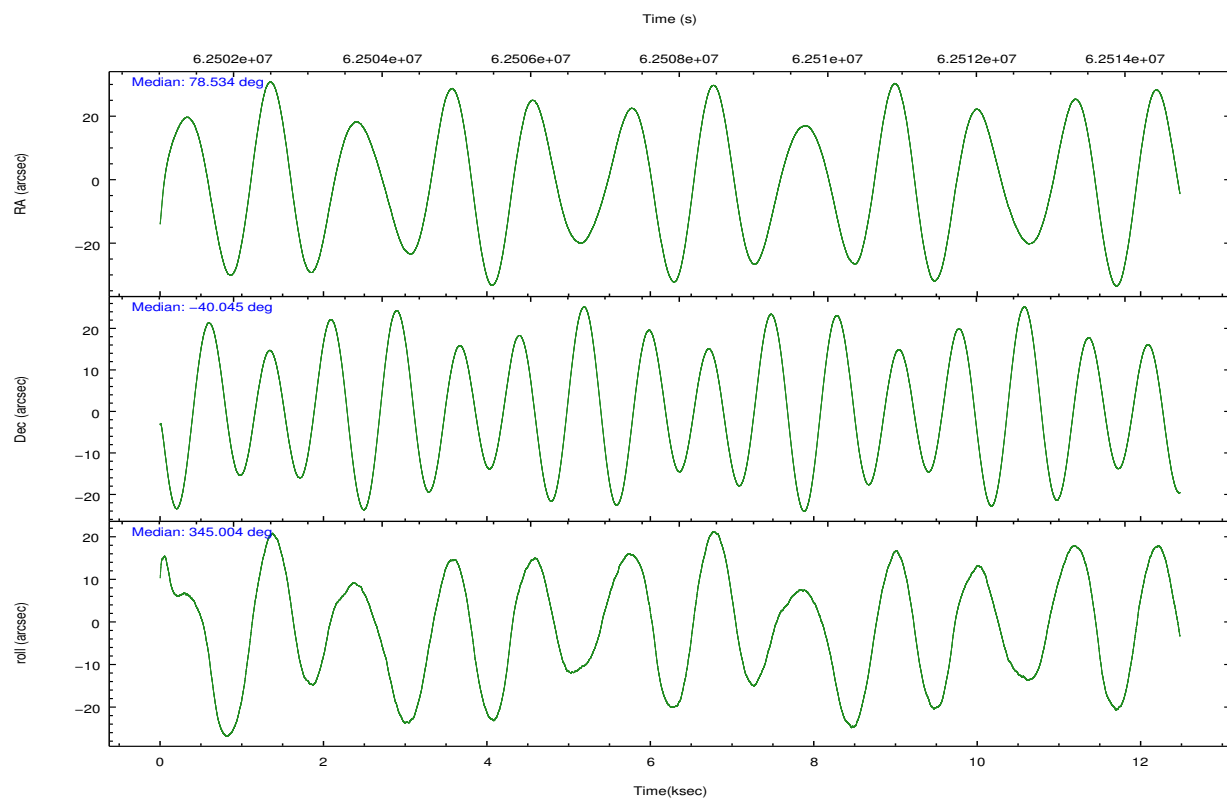
2.2 Compared Parameters

Parameter	Planned	Actual
Instrument	HRC	HRC
Detector	HRC-S	HRC-S
Grating	LETG	LETG
Data mode	OBSERVING	OBSERVING
Observation mode	POINTING	POINTING
Pointing RA	78.497795	78.53407271619872
Pointing Dec	-40.053660	-40.04530180034384
Pointing Roll	344.918976	345.0096755986524
SIM focus pos (mm)	-1.429586	-1.428180813131781
SIM defocus (mm)	0.1037507710433287	0.1051558262725154
SIM translation stage pos (mm)	250.455976	250.466033080201
SIM translation stage offset (mm)	0	-0.01005468664627074
Observation start time	62502117.184000	62500746.427184
Observation start date	1999-12-25T09:40:53	1999-12-25T09:19:06
Observation end time	62514117.184000	62515022.115202
Observation end date	1999-12-25T13:00:53	1999-12-25T13:17:02

Parameter	Planned	Actual
Obspar format version number	6	6
Obspar file type	PREDICTED	ACTUAL
Obspar update status	NONE	UPDATED

2.3 Aspect



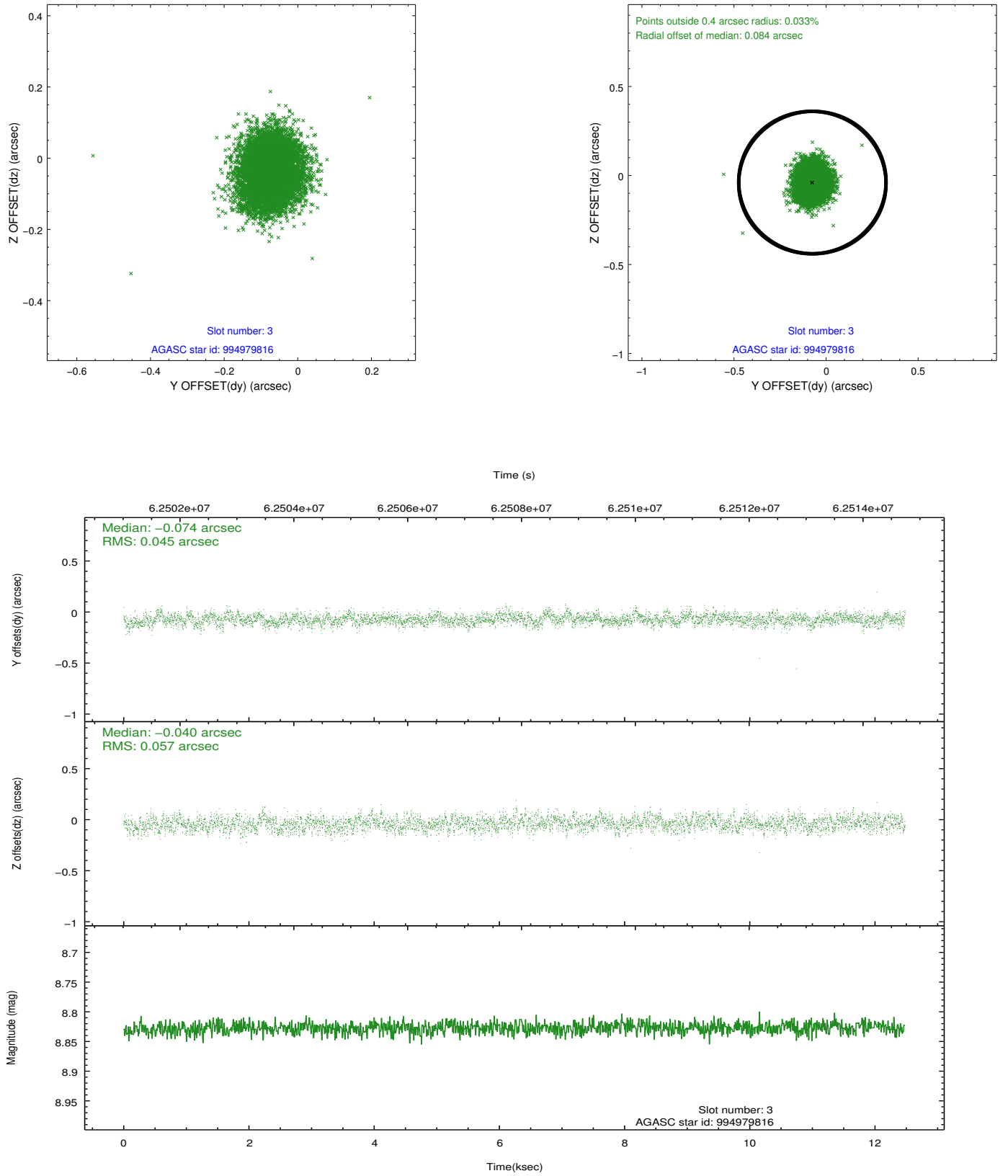


Slot Statistics

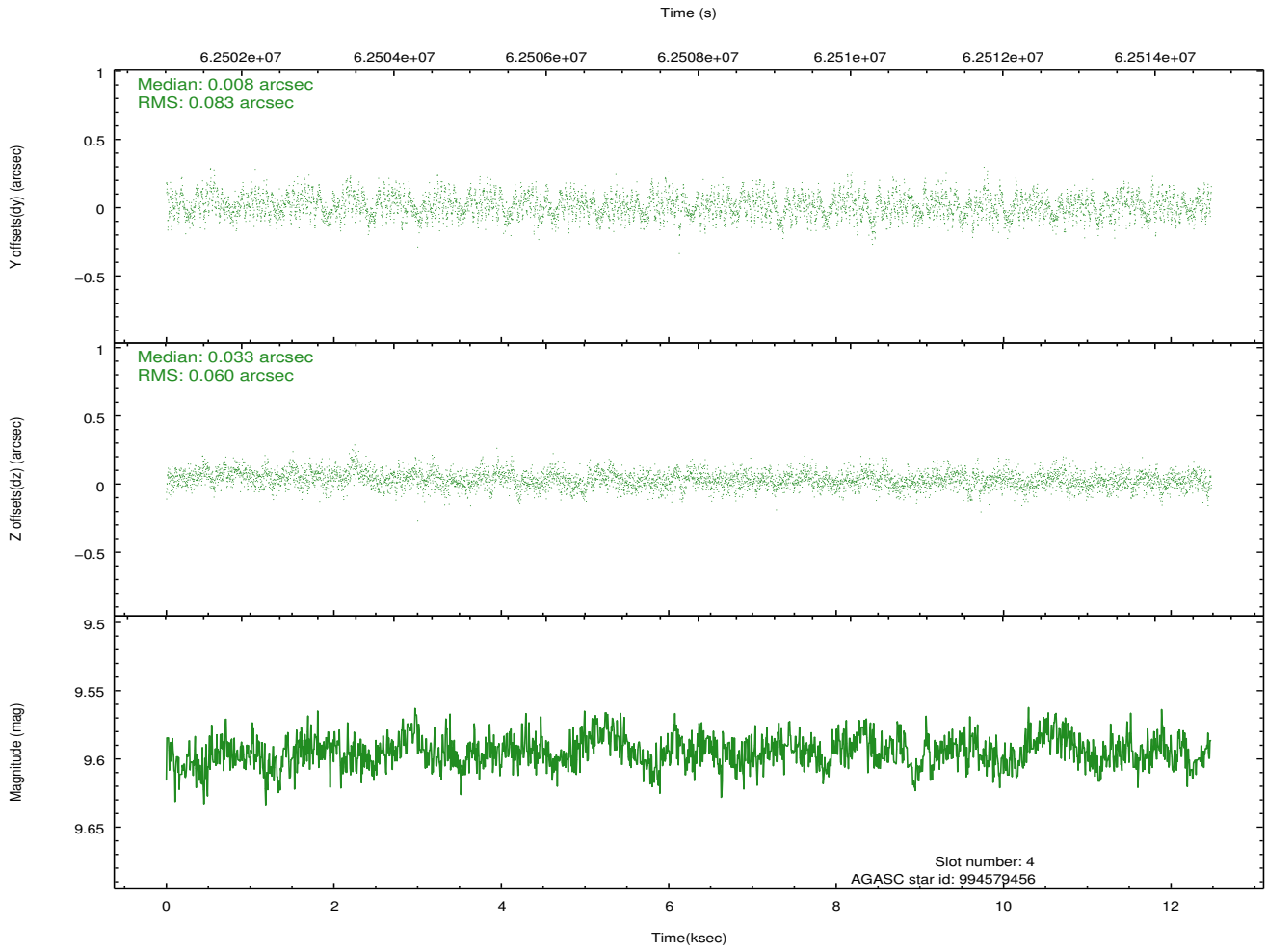
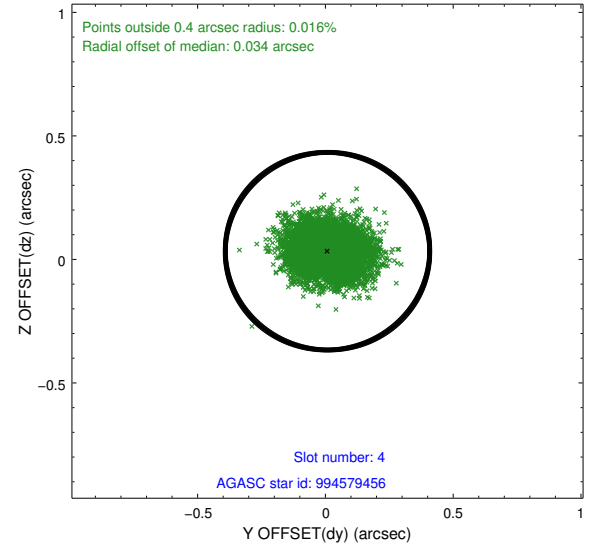
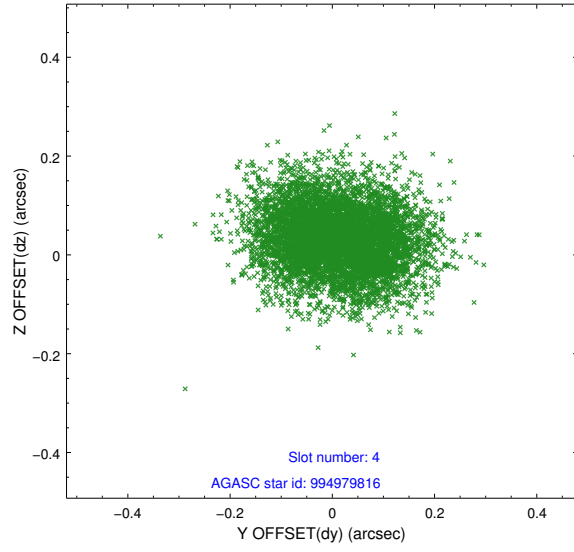
slot	status	id	mag	n_pts	med_dy	med_dz	dr1	dr2	ra	dec	mean_y	mean_z
0	FID	HRC-S-1	7.00	6089	0.162	-0.119	0.021	0.032	0.000000	0.000000	-1155.51	-452.79
1	FID	HRC-S-3	7.01	6089	0.087	-0.063	0.017	0.026	0.000000	0.000000	-1158.38	576.72
2	FID	HRC-S-4	7.00	6089	0.142	-0.114	0.009	0.015	0.000000	0.000000	1242.66	579.12
3	GUIDE	994979816	8.83	6085	-0.074	-0.040	0.077	0.124	78.007515	-40.348161	-1022.60	-1377.19
4	GUIDE	994579456	9.60	6086	0.008	0.033	0.109	0.176	79.112909	-39.629861	1250.34	1911.41
5	GUIDE	994591280	9.47	6086	-0.030	-0.088	0.106	0.171	78.571374	-39.417594	-398.92	2264.55
6	GUIDE	994976832	10.33	6082	-0.064	0.065	0.169	0.290	78.111204	-40.640369	-470.09	-2315.81
7	GUIDE	994975320	10.33	6083	0.156	0.037	0.143	0.238	78.726913	-40.244359	786.22	-499.87

2.4 Star Slots

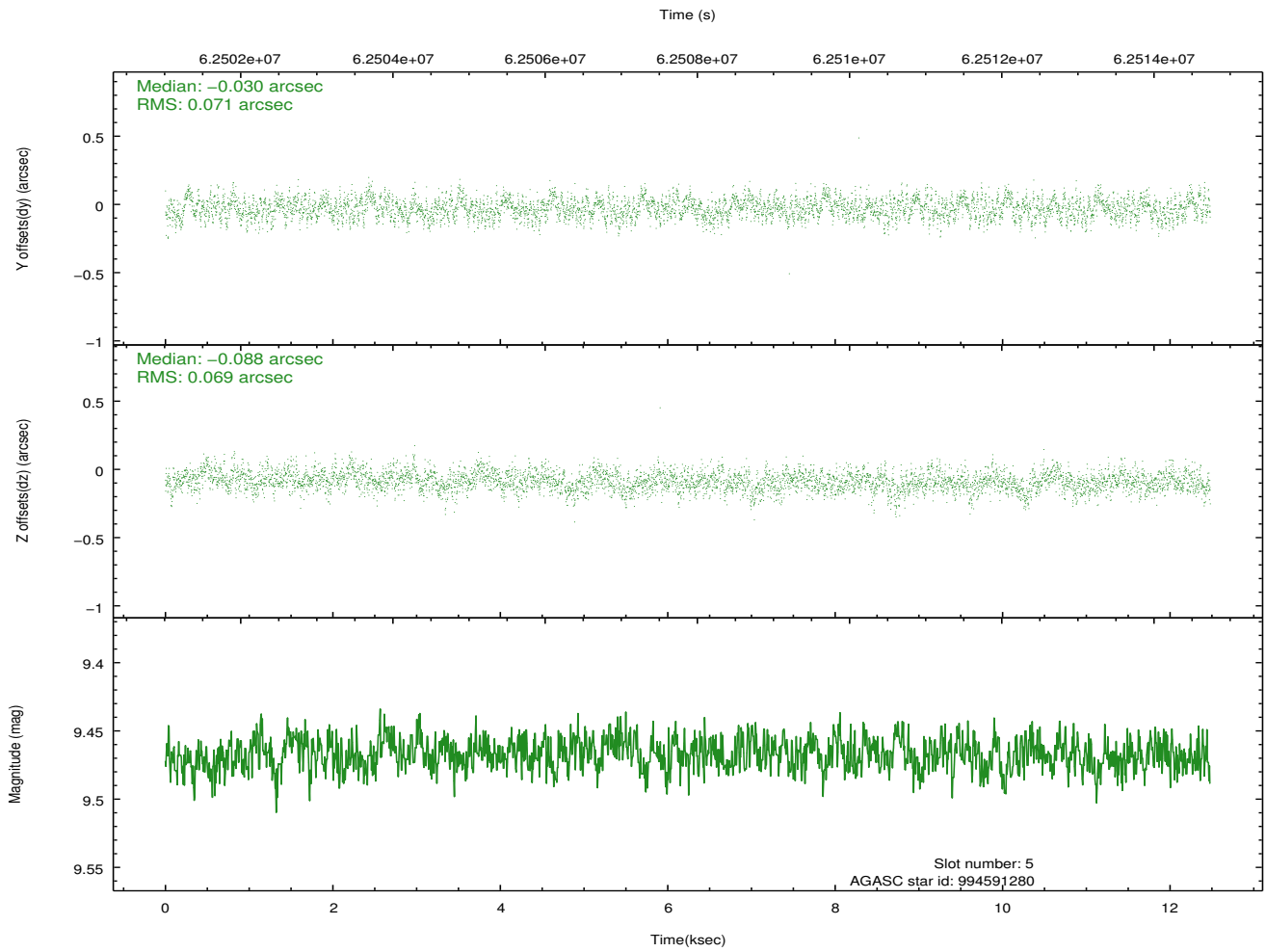
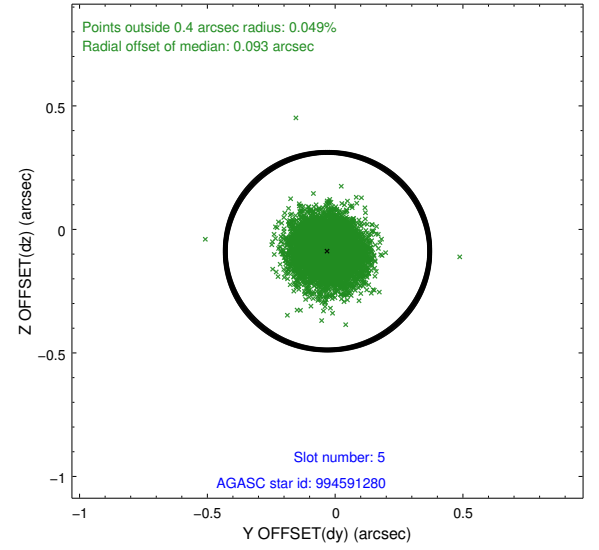
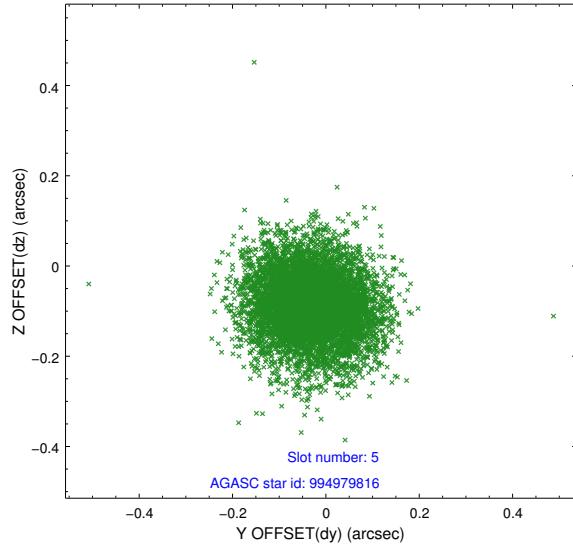
2.4.1 Slot 3



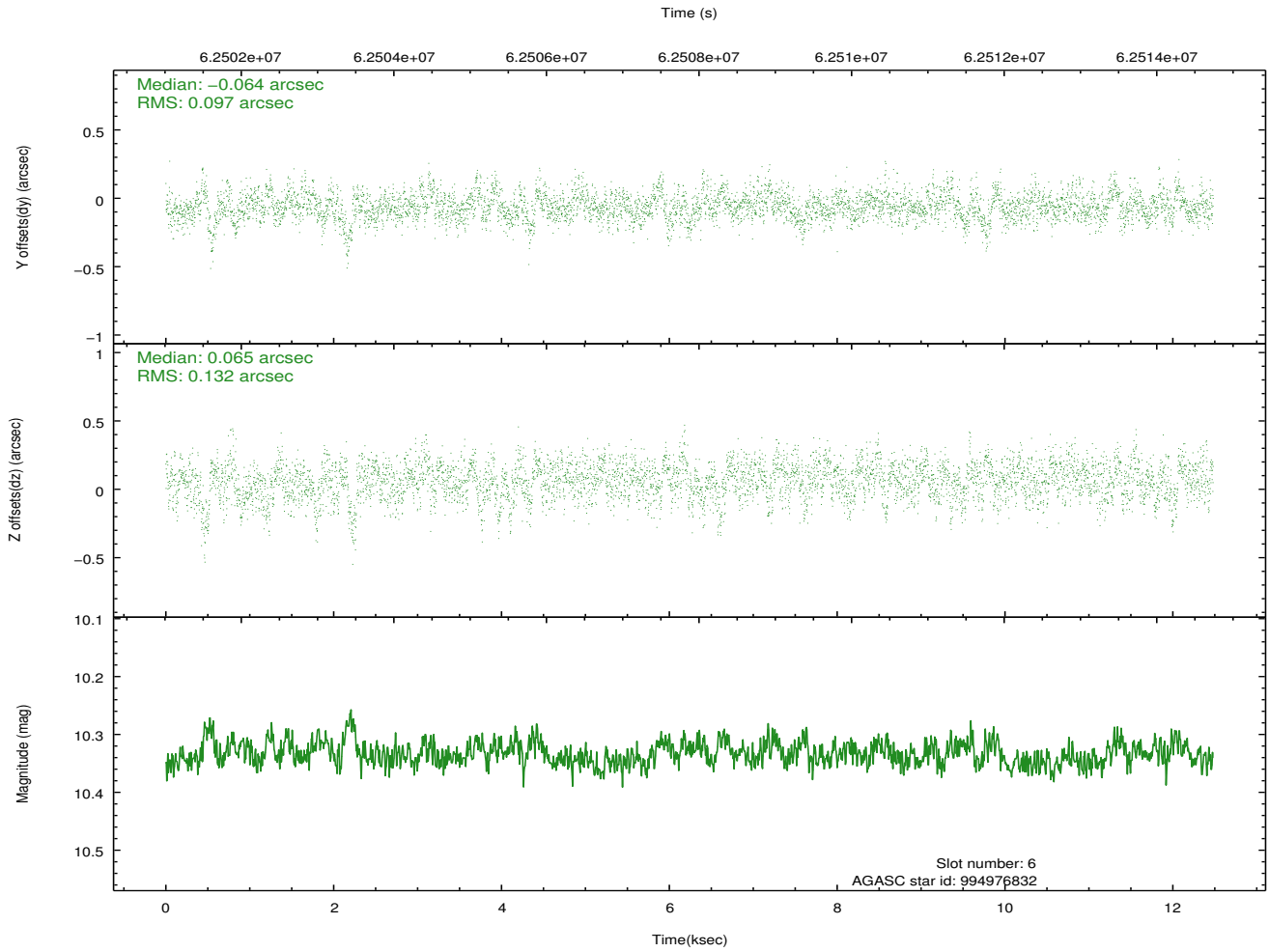
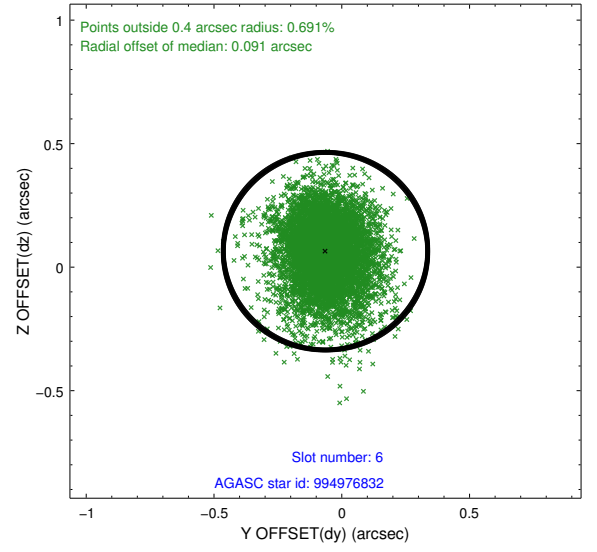
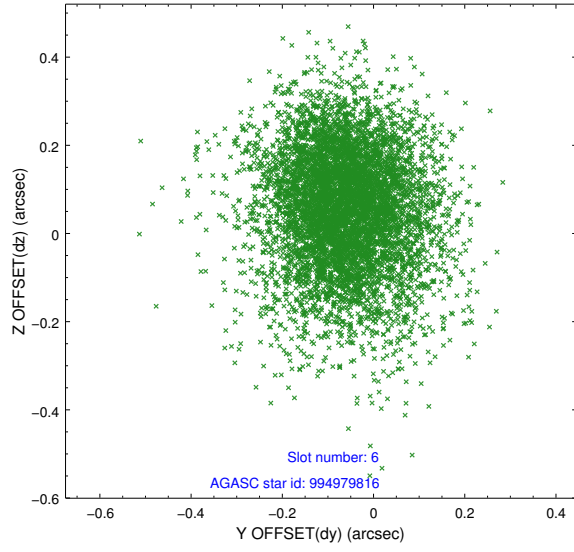
2.4.2 Slot 4



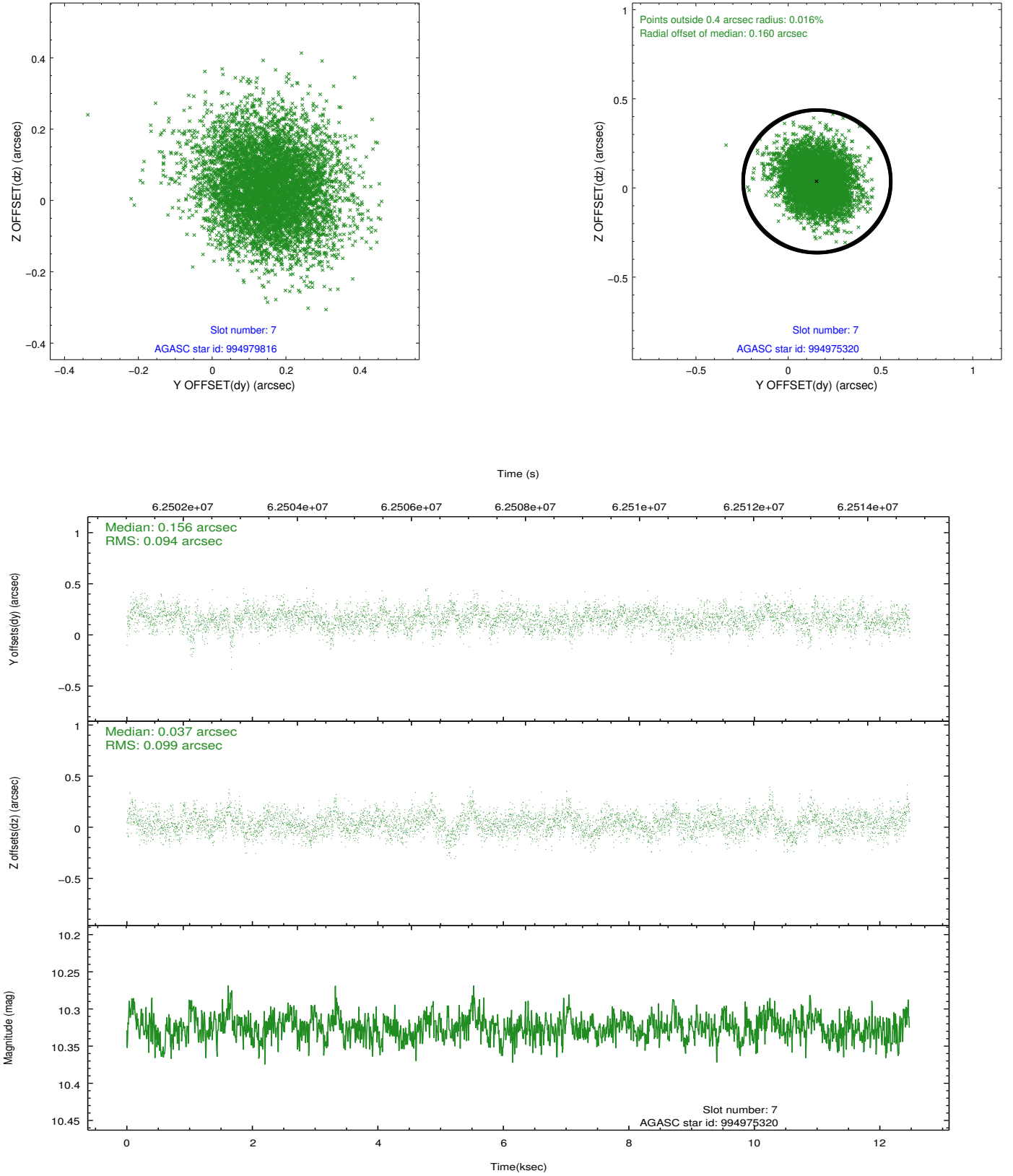
2.4.3 Slot 5



2.4.4 Slot 6

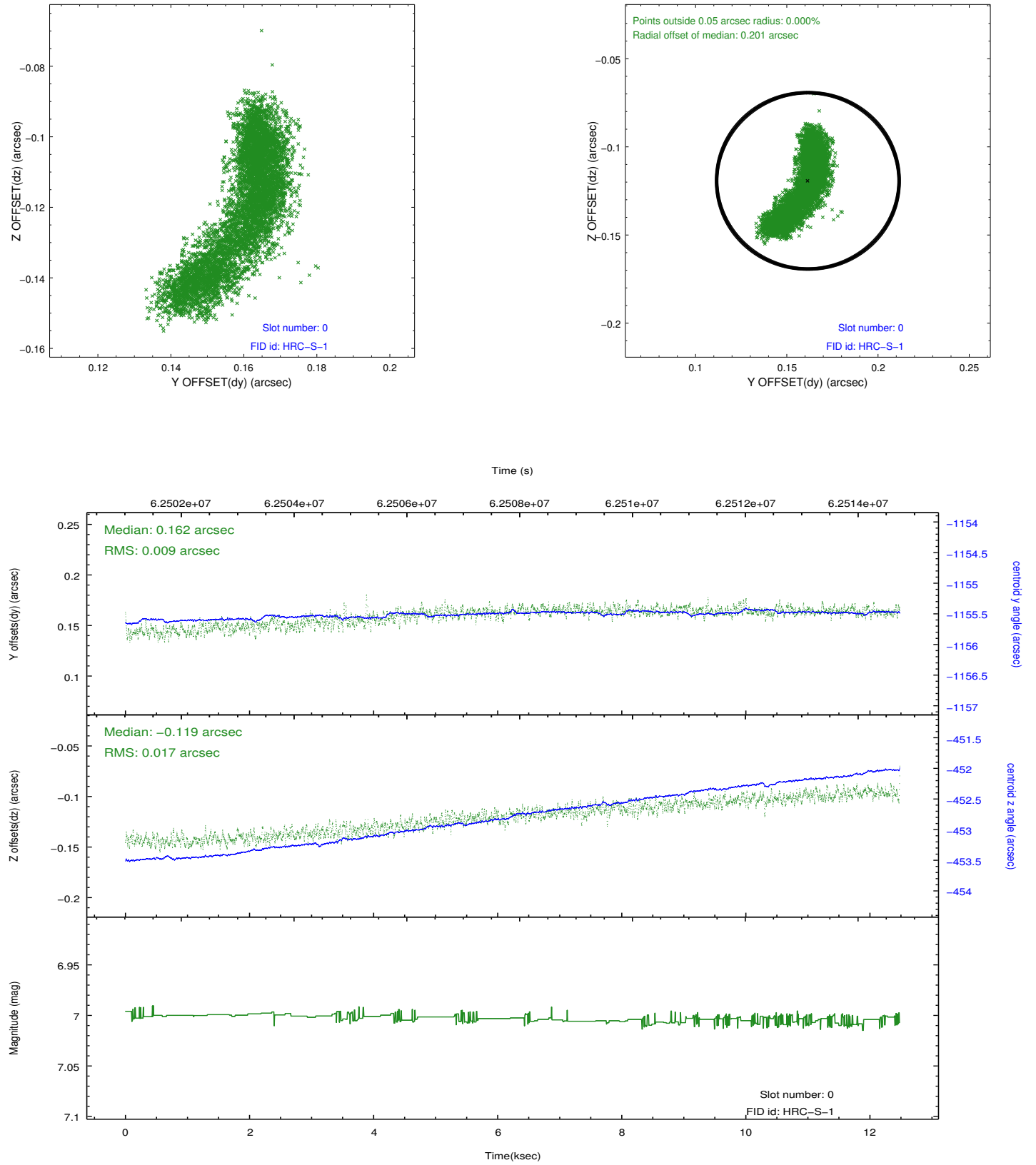


2.4.5 Slot 7

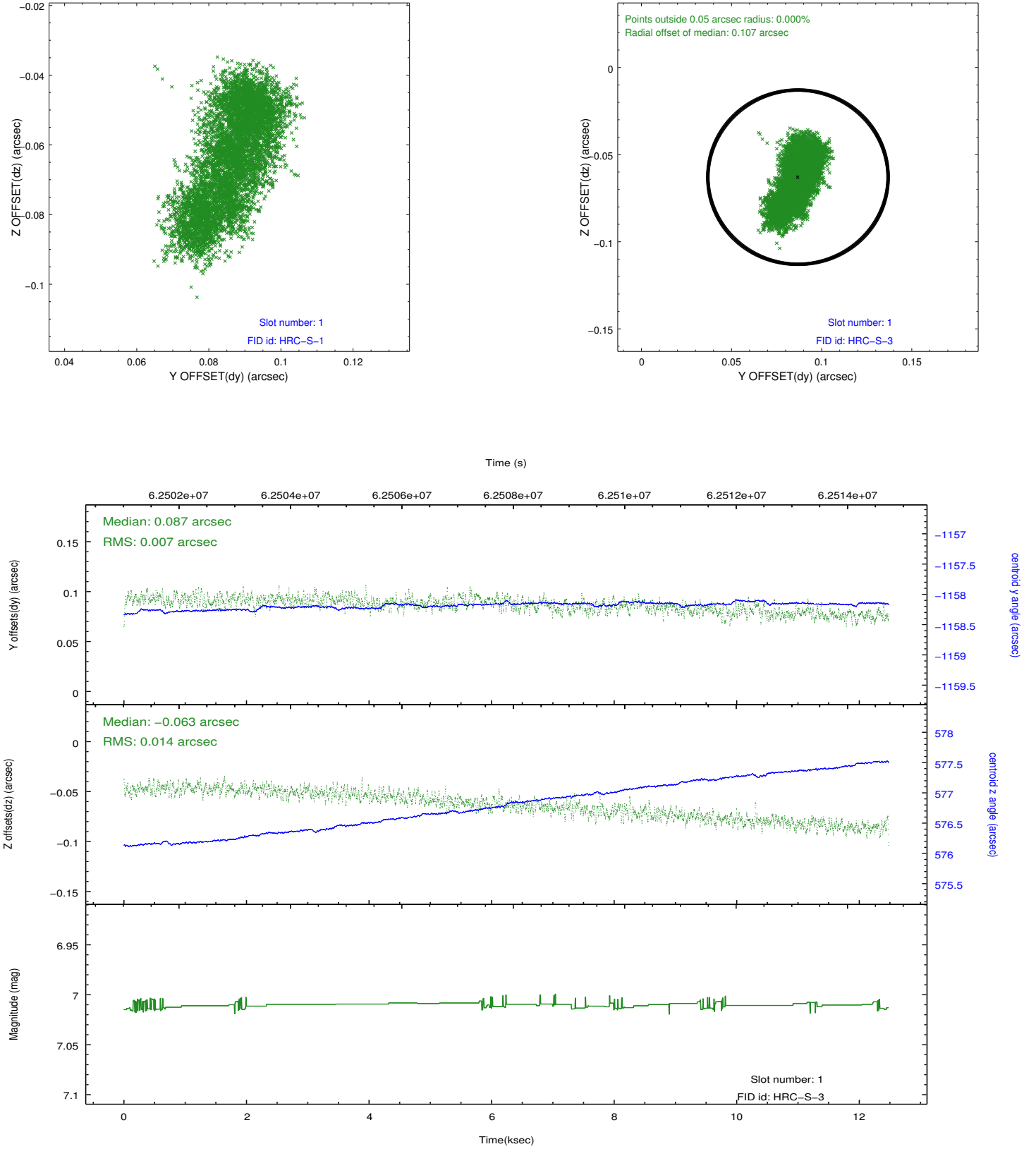


2.5 FID Slots

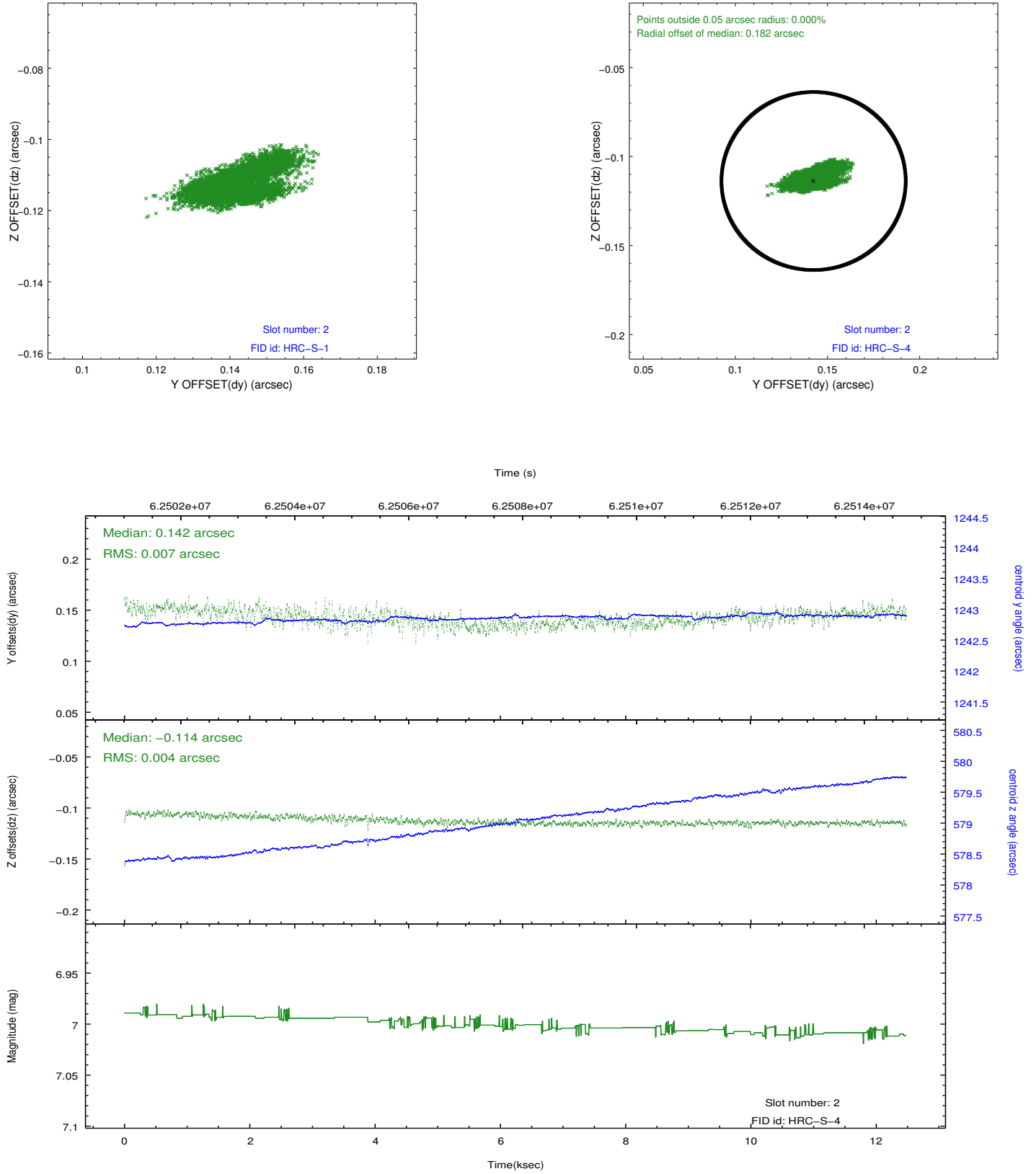
2.5.1 Slot 0



2.5.2 Slot 1

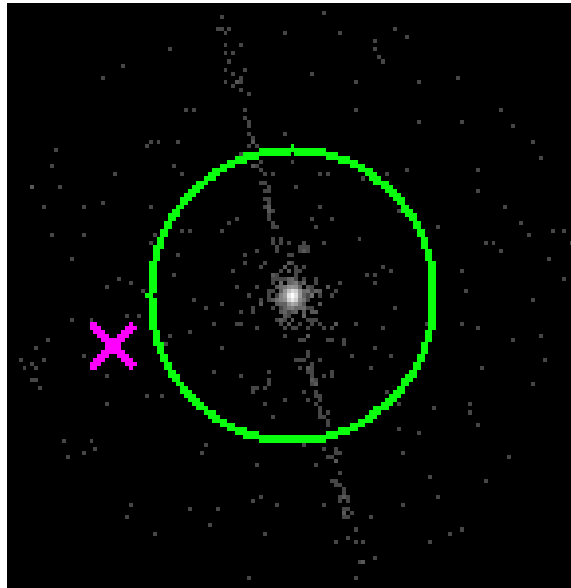


2.5.3 Slot 2

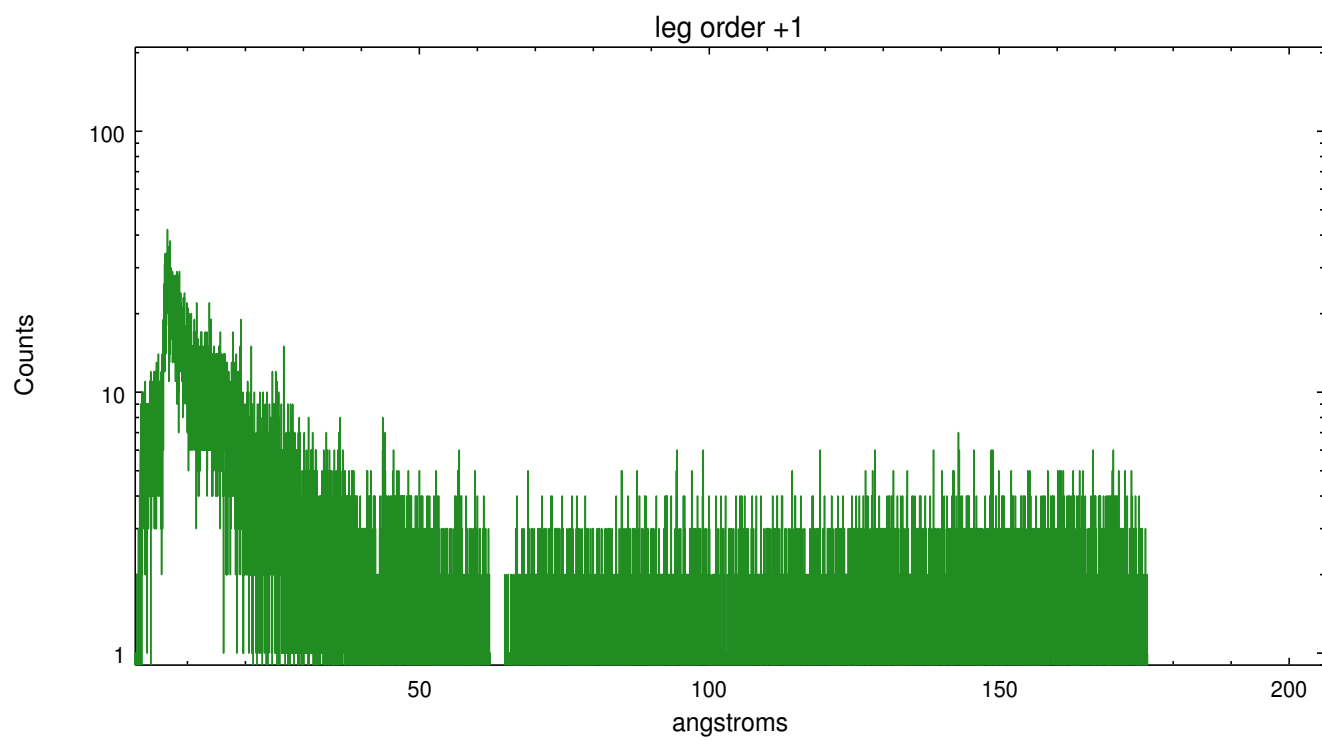
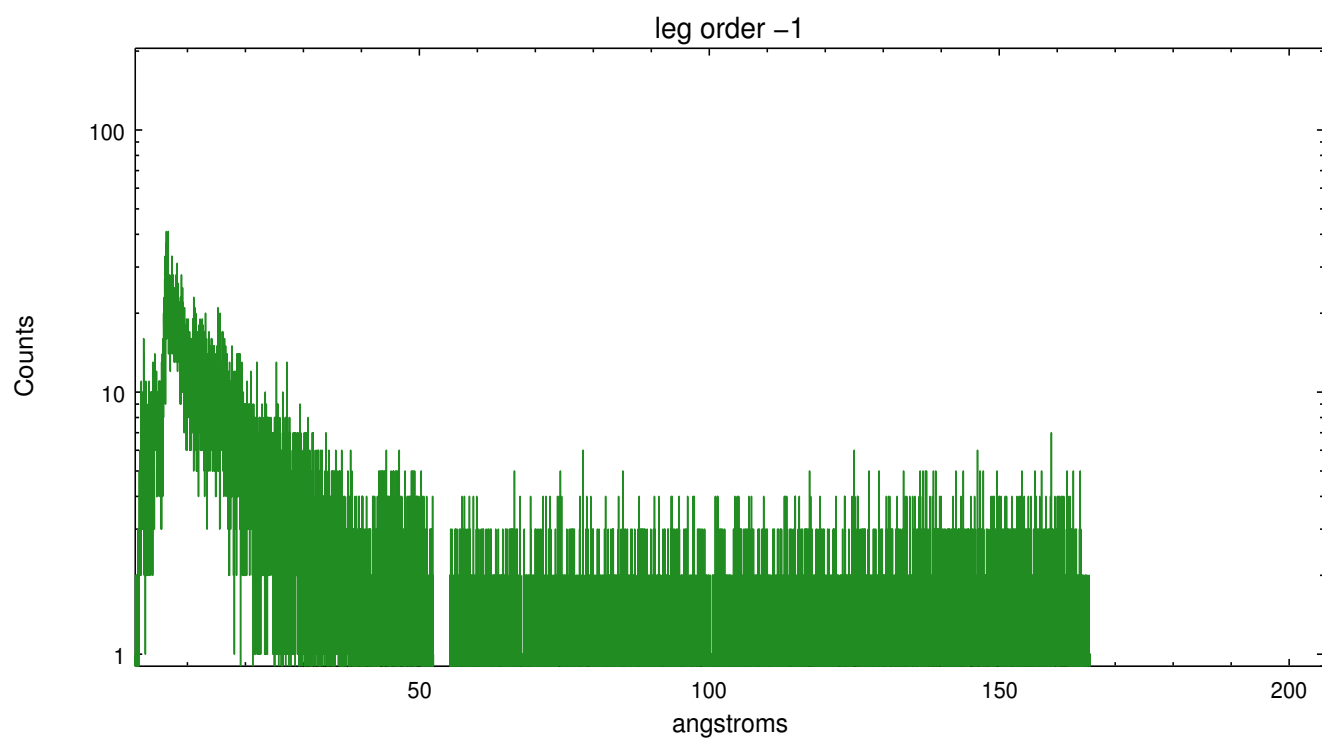


3 Gratings

3.1 LETG Arm



LETG Zero Order



A Summary

A.1 Status

V&V Scientist	Joy Nichols
V&V Date (YYYY-MM-DD)	2010.04.20
V&V Edition	1
V&V Disposition and Status	OK
V&V Charge Time	12.208

A.2 Comments