

V&V Reference Report

L2 ASCDS Version : 8.4.4

Observation 6572 - L2 Version 4
Chandra X-Ray Center

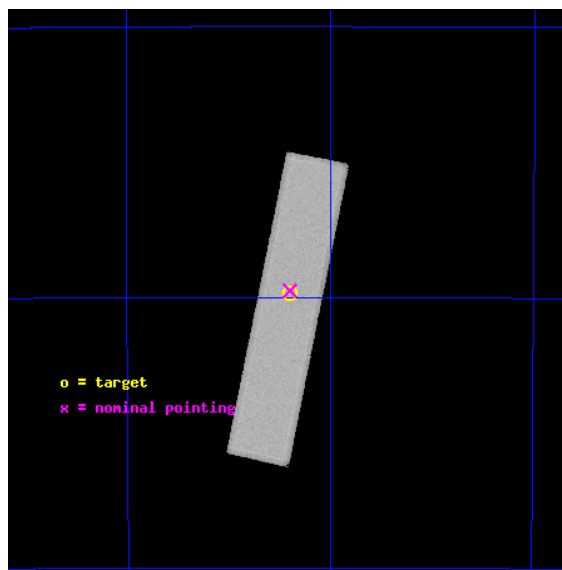
L2 Processing Date : Aug 11 2012

Contents

1	Front	2
2	OBI	3
2.1	OBI	3
2.1.1	Images	3
2.1.2	Parameters	4
2.1.3	Events	4
2.2	Compared Parameters	5
2.3	Aspect	6
2.4	Star Slots	9
2.4.1	Slot 3	9
2.4.2	Slot 4	10
2.4.3	Slot 5	11
2.4.4	Slot 6	12
2.4.5	Slot 7	13
2.5	FID Slots	14
2.5.1	Slot 0	14
2.5.2	Slot 1	15
2.5.3	Slot 2	16
A	Summary	17
A.1	Status	17
A.2	Comments	17

1 Front

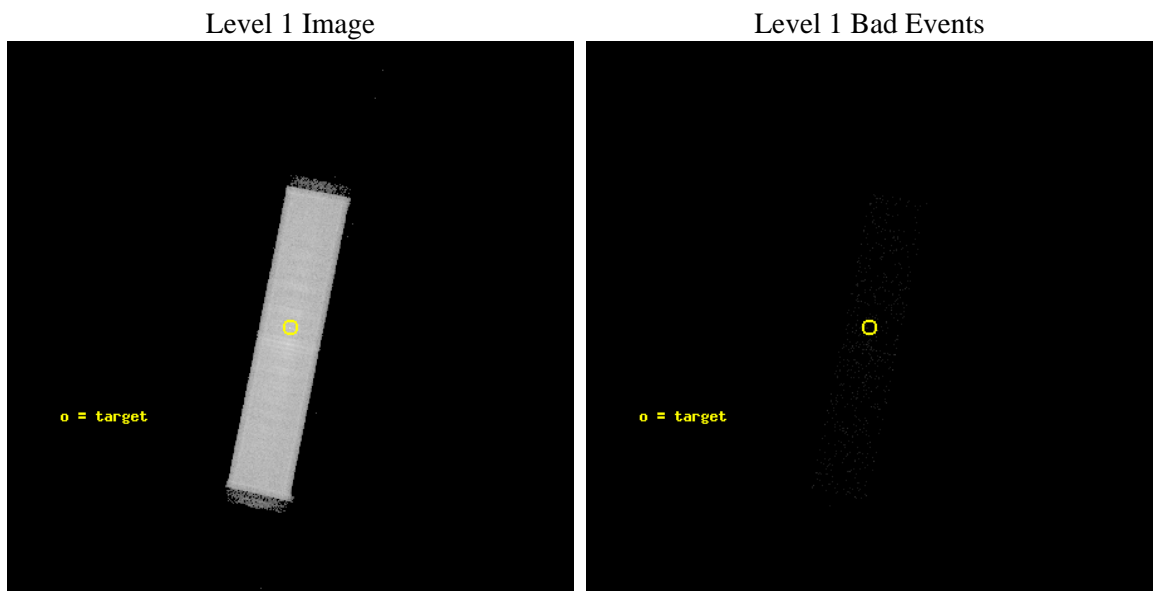
seq_num	400477	Sequence number
obs_id	6572	Observation id
title	The low-L LMXB 1RXS J171824.2-402934	Proposal title
observer	Prof Mariano Mendez	Principal investigator
object	1RXS J171824.2-402934	Source name
ra_targ	259.6006	Observer's specified target RA [deg]
dec_targ	-40.492511	Observer's specified target Dec [deg]
ra_nom	259.59967292383	Nominal RA [deg]
dec_nom	-40.487722865789	Nominal Dec [deg]
roll_nom	101.42422683297	Nominal Roll [deg]
revision	4	Processing version of data
ontime	5147.5502440929	[s]
livetime	5122.5853037172	Ontime multiplied by DTCOR
l2events	257166	Number of level 2 events



2 OBI

2.1 OBI

2.1.1 Images



2.1.2 Parameters

obi_num	1	Obi number	sched_exp_time	5000.000000	[s] Scheduled observation exposure time
ascdsver	8.4.5	Processing system revision	ontime	5147.5502440929	[s]
caldbver	4.5.1.1	 	l1events	448195	Number of level 1 events
date	2012-08-11T17:56:43	Date and time of file creation			
revision	4	Processing version of data			

2.1.3 Events

Level 1 Events

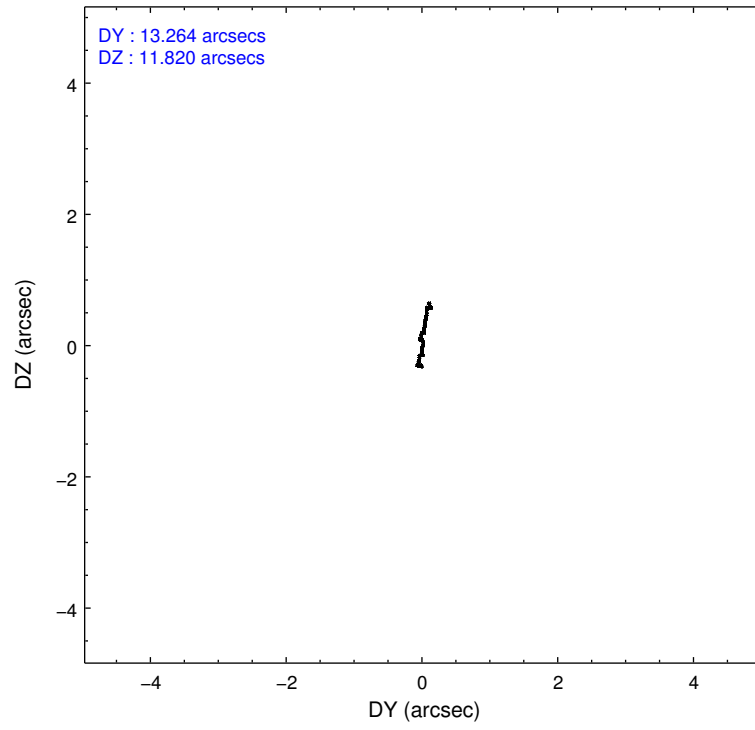
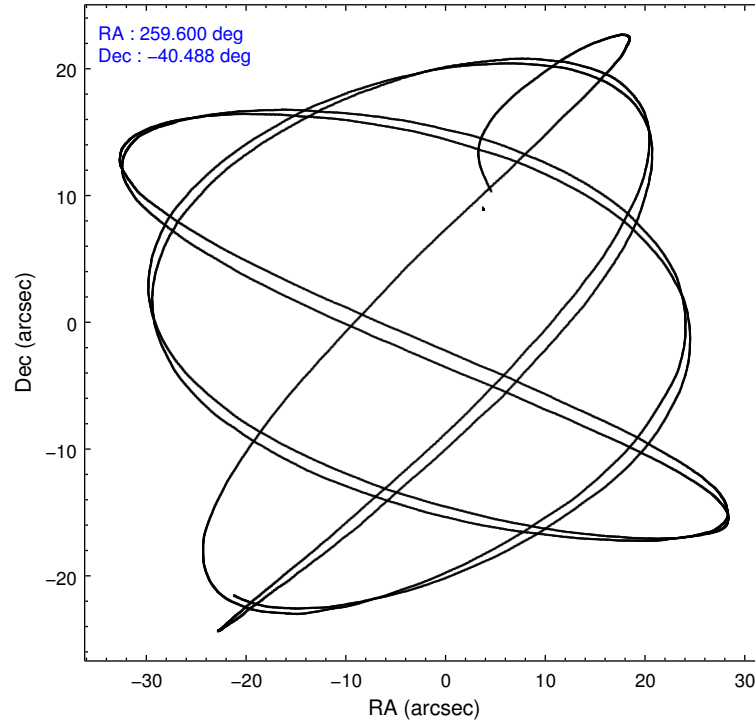
	segment 1	segment 2	segment 3
level 1 events	512	447677	6
rejected events	80	83680	6
rejected %	15%	18%	100%

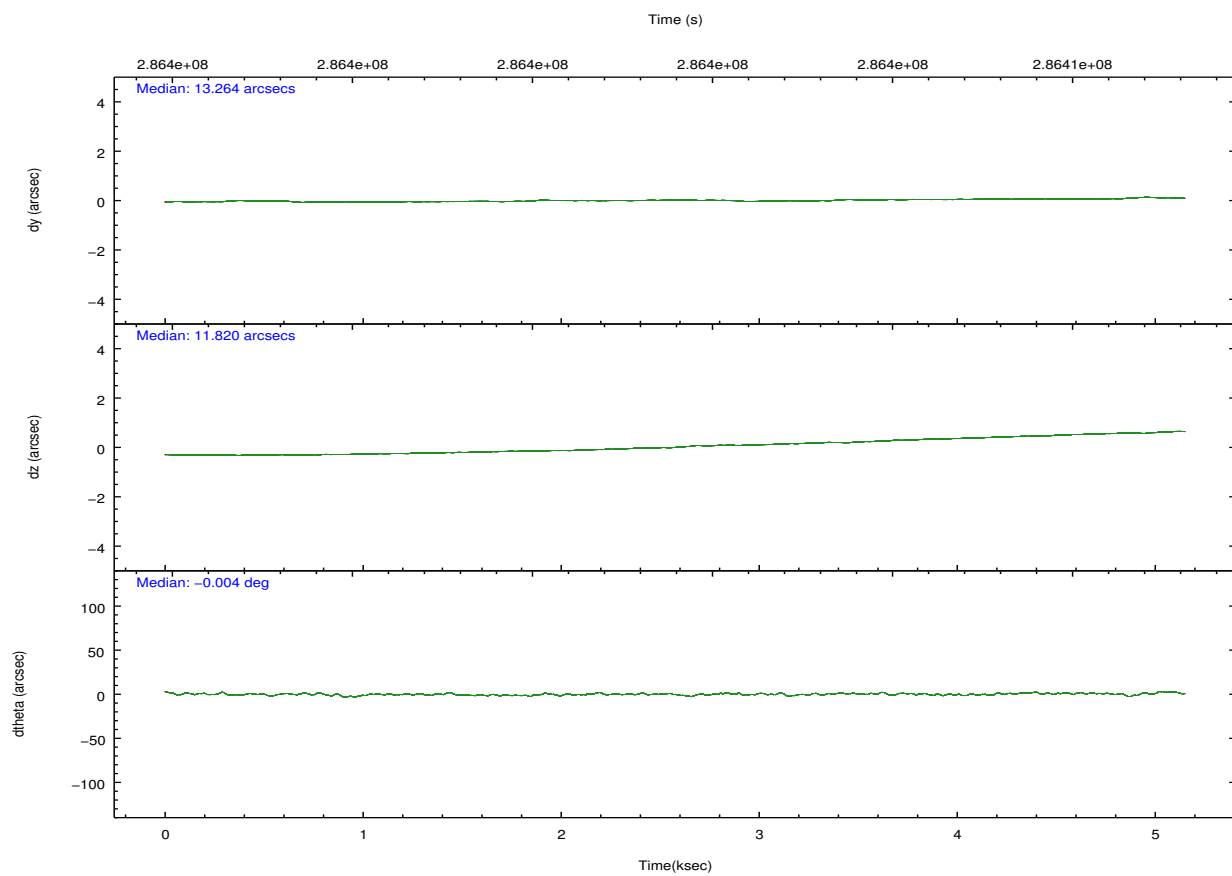
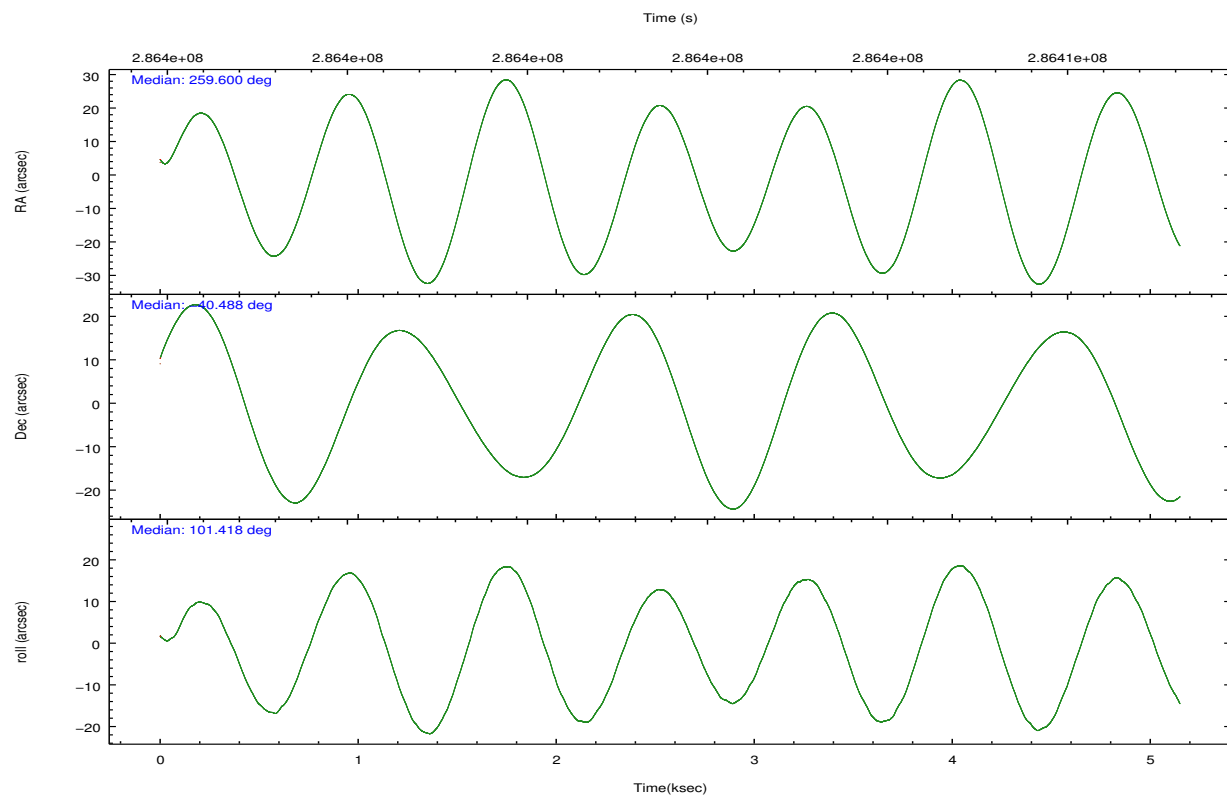
2.2 Compared Parameters

Parameter	Planned	Actual
Instrument	HRC	HRC
Detector	HRC-S	HRC-S
Grating	NONE	NONE
Data mode	OBSERVING	OBSERVING
Observation mode	POINTING	POINTING
[deg] Pointing RA	259.625815	259.5996729238273
[deg] Pointing Dec	-40.508377	-40.48772286578902
[deg] Pointing Roll	101.373868	101.4242268329667
[mm] SIM focus pos	-1.533336	-1.526339935833849
[mm] SIM defocus	7.710433287538843e-07	0.006996703570447904
[mm] SIM translation stage pos	250.455976	250.4635187648994
[mm] SIM translation stage offset	0	-0.007540371344731511
[s] Observation start time (MET)	286401365.184000	286400206.69398
Observation start date	2007-01-28T19:55:00	2007-01-28T19:36:46
[s] Observation end time (MET)	286406365.184000	286407306.86932
Observation end date	2007-01-28T21:18:20	2007-01-28T21:35:06

Parameter	Planned	Actual
Obspar format version number	7	7
Obspar file type	PREDICTED	ACTUAL
Obspar update status	NONE	UPDATED

2.3 Aspect



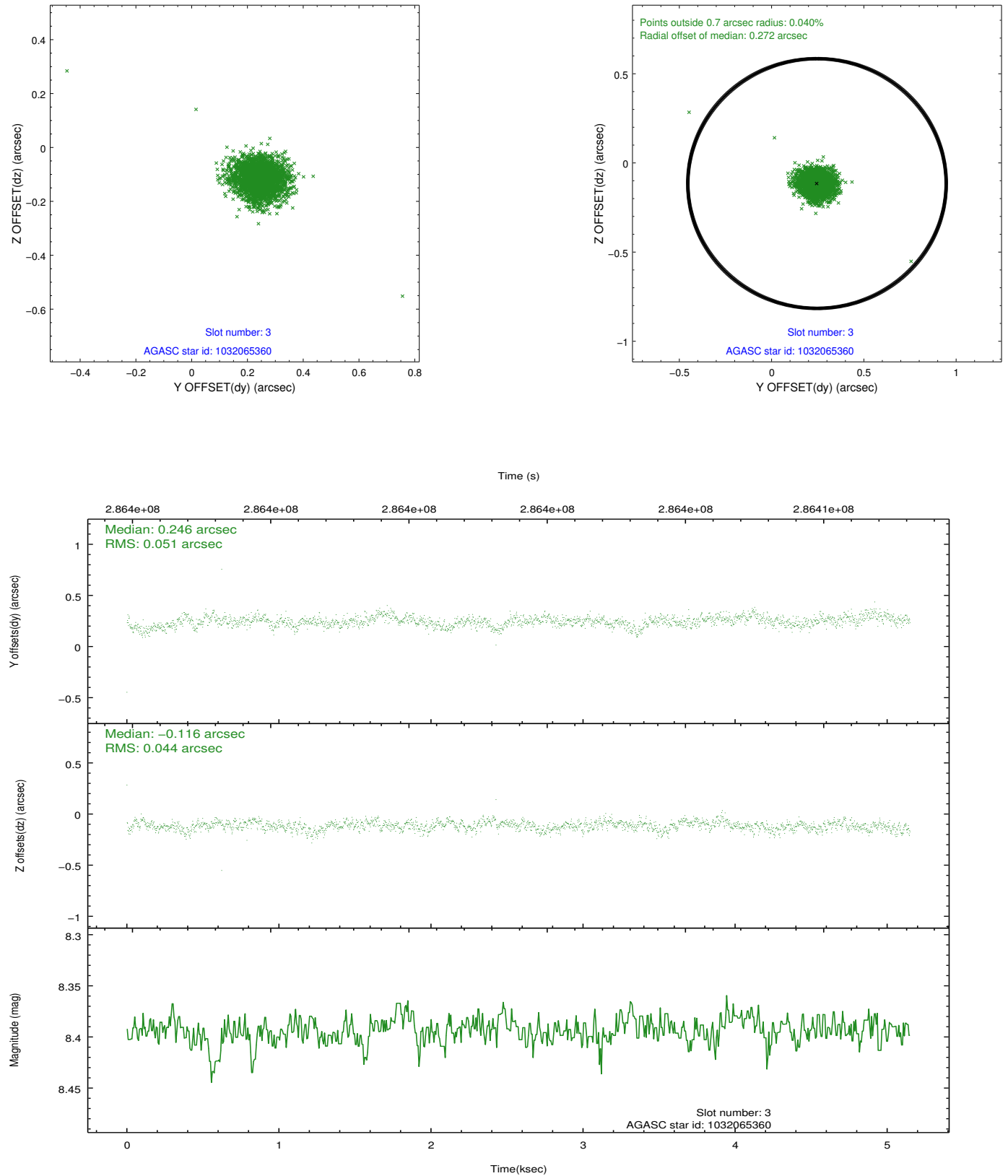


Slot Statistics

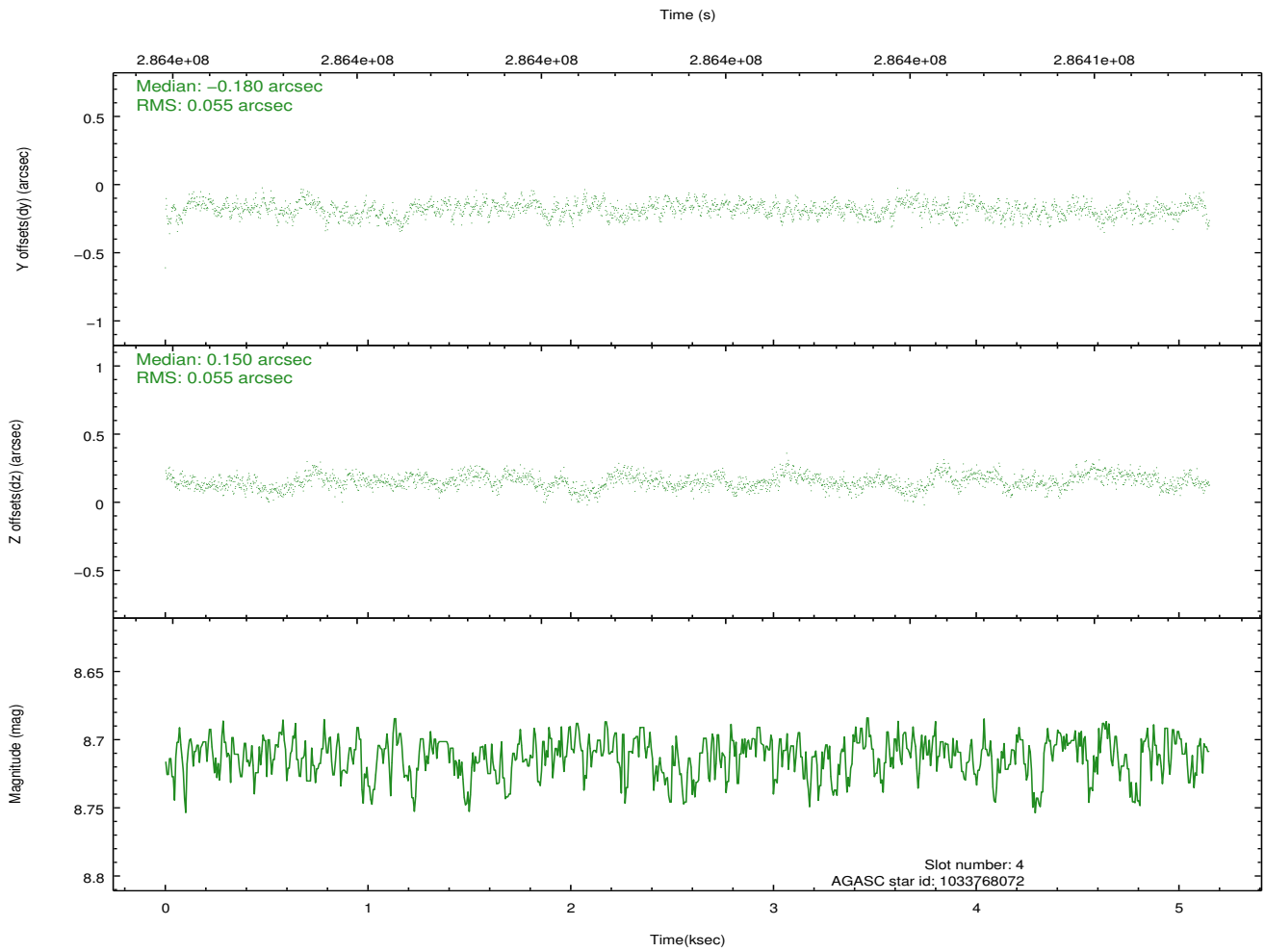
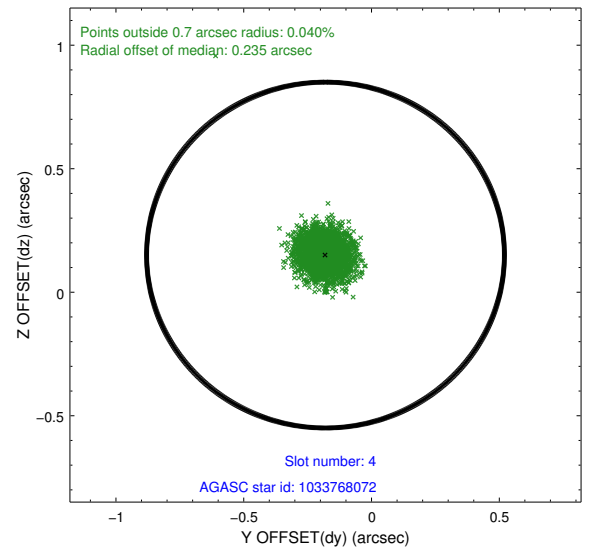
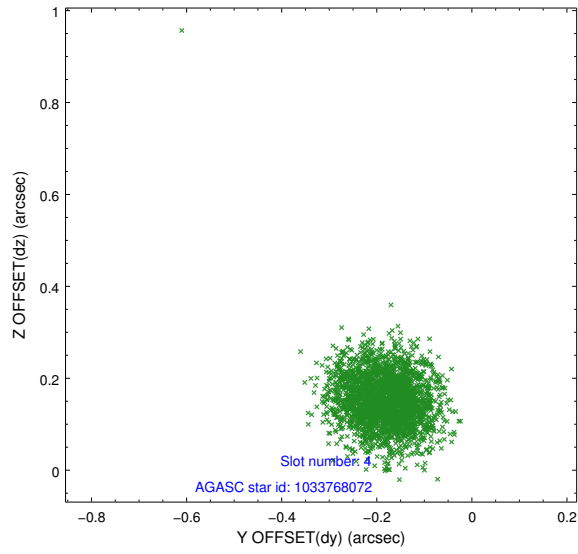
slot	status	id	mag	n_pts	med_dy	med_dz	dr1	dr2	ra	dec	mean_y	mean_z
0	FID	HRC-S-1	6.98	1256	0.037	-0.147	0.008	0.016	0.000000	0.000000	-1167.66	-460.58
1	FID	HRC-S-2	6.97	1257	0.127	-0.127	0.012	0.023	0.000000	0.000000	1231.15	-453.55
2	FID	HRC-S-4	6.93	1257	0.238	-0.030	0.012	0.024	0.000000	0.000000	1231.74	571.27
3	GUIDE	1032065360	8.39	2513	0.246	-0.116	0.067	0.111	259.684100	-41.099417	-2117.00	265.17
4	GUIDE	1033768072	8.71	2511	-0.180	0.150	0.082	0.131	260.222915	-39.936447	1687.26	-2019.44
5	GUIDE	1033770424	8.25	2513	-0.116	0.110	0.066	0.110	260.243465	-40.286835	442.35	-1818.67
6	GUIDE	1032069200	8.75	2512	0.275	-0.300	0.080	0.129	258.953756	-41.099138	-1732.31	2208.03
7	GUIDE	1032069472	8.08	2511	-0.220	0.151	0.070	0.114	259.731127	-39.838834	2304.61	-758.51

2.4 Star Slots

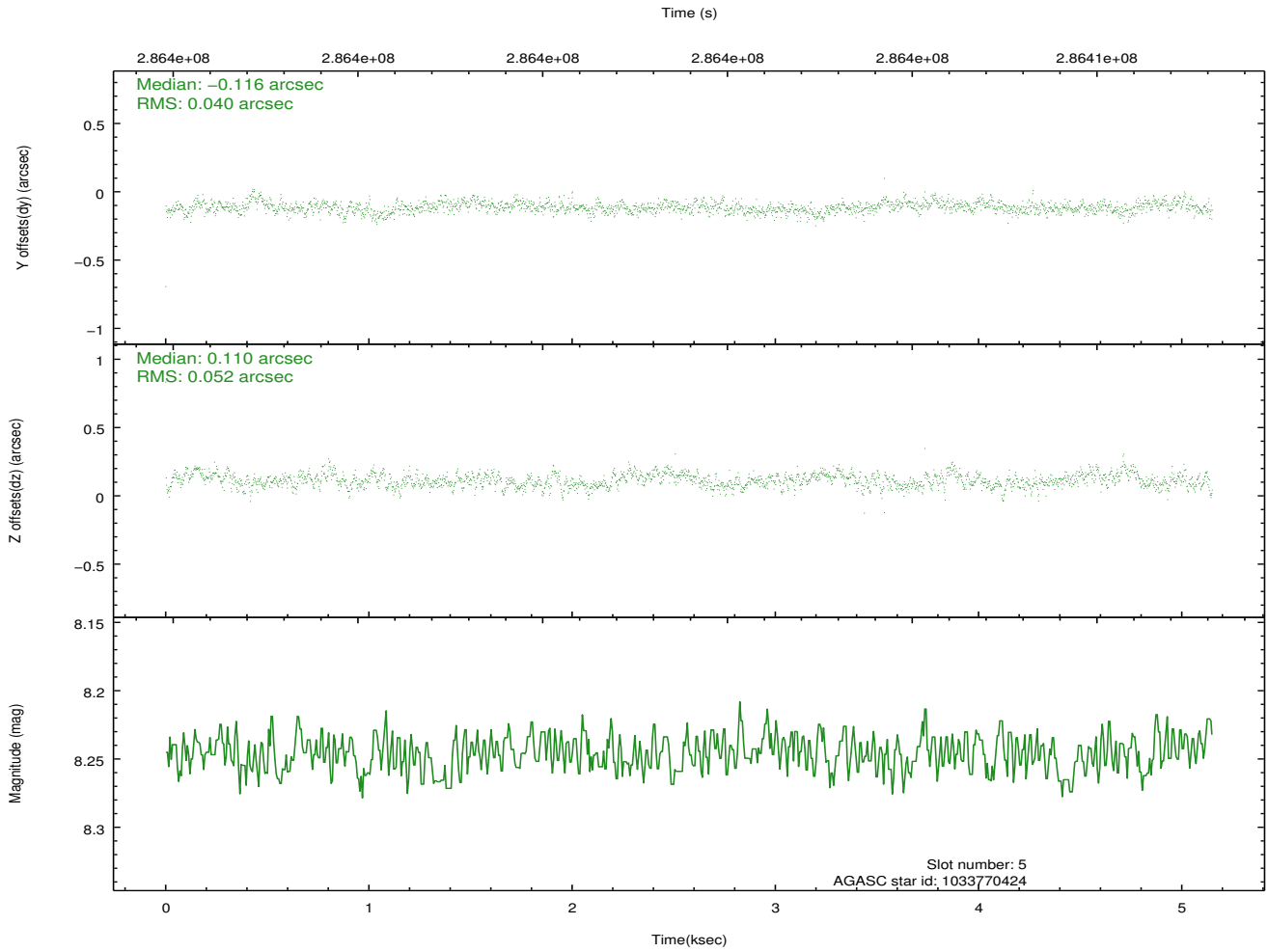
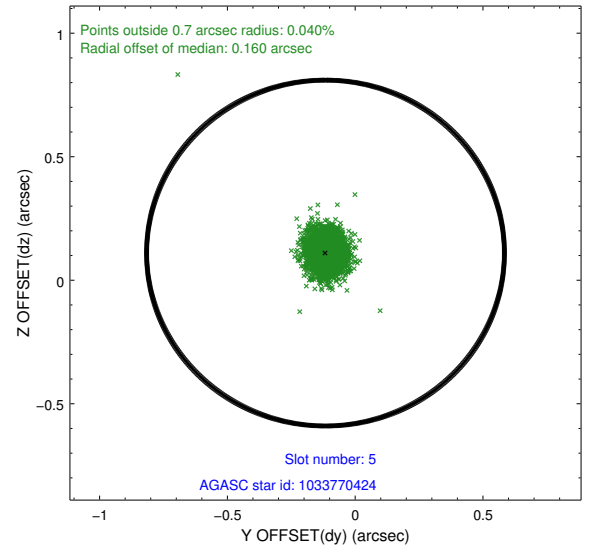
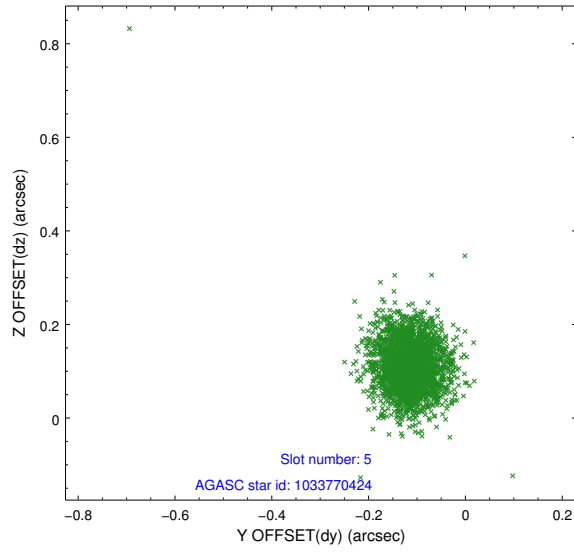
2.4.1 Slot 3



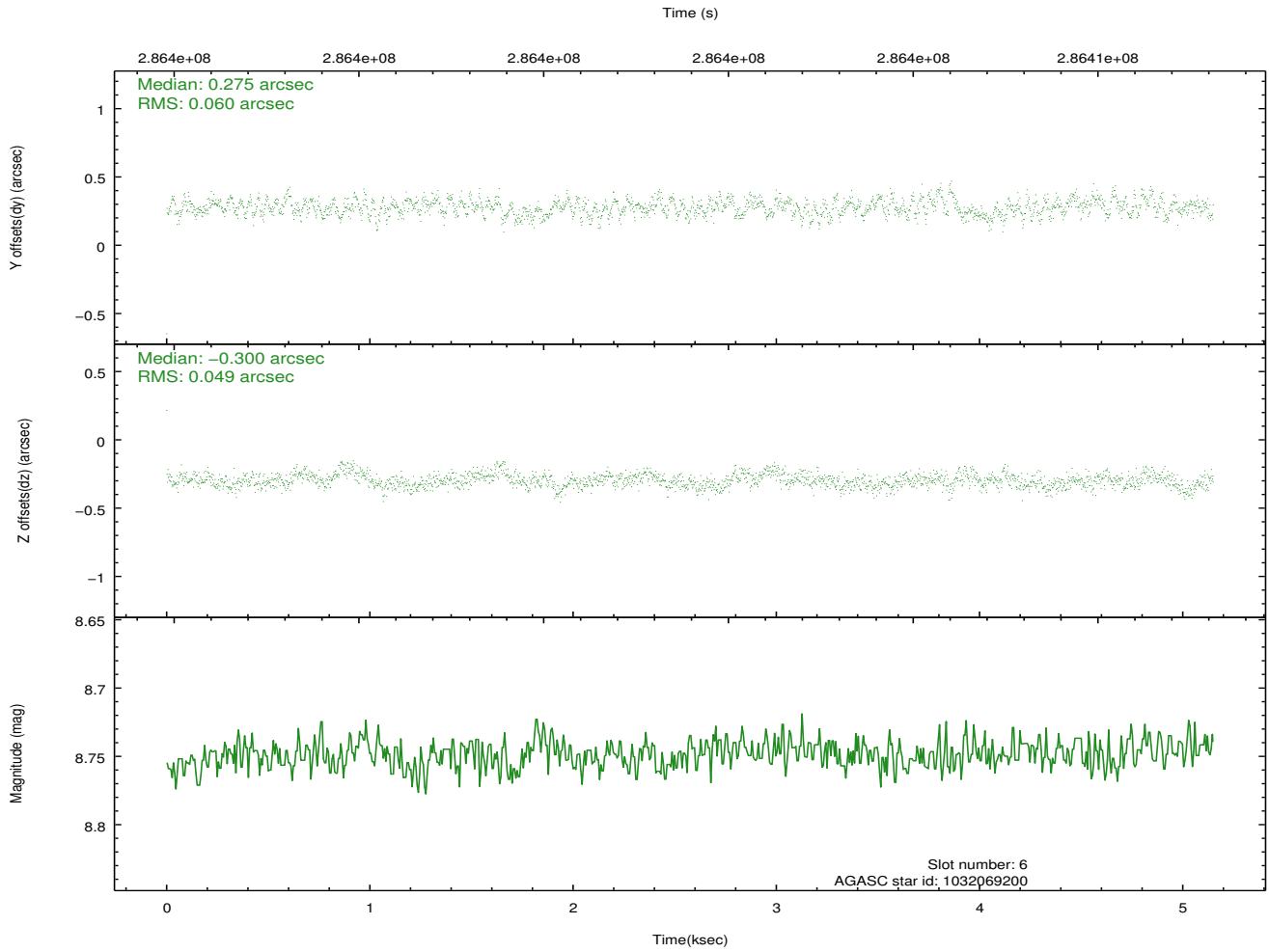
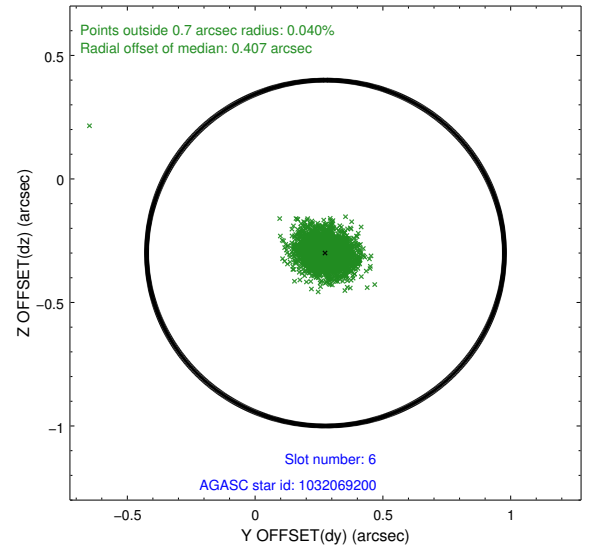
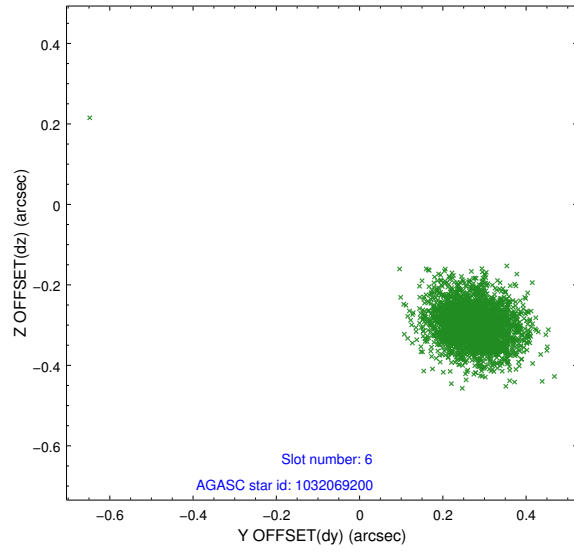
2.4.2 Slot 4



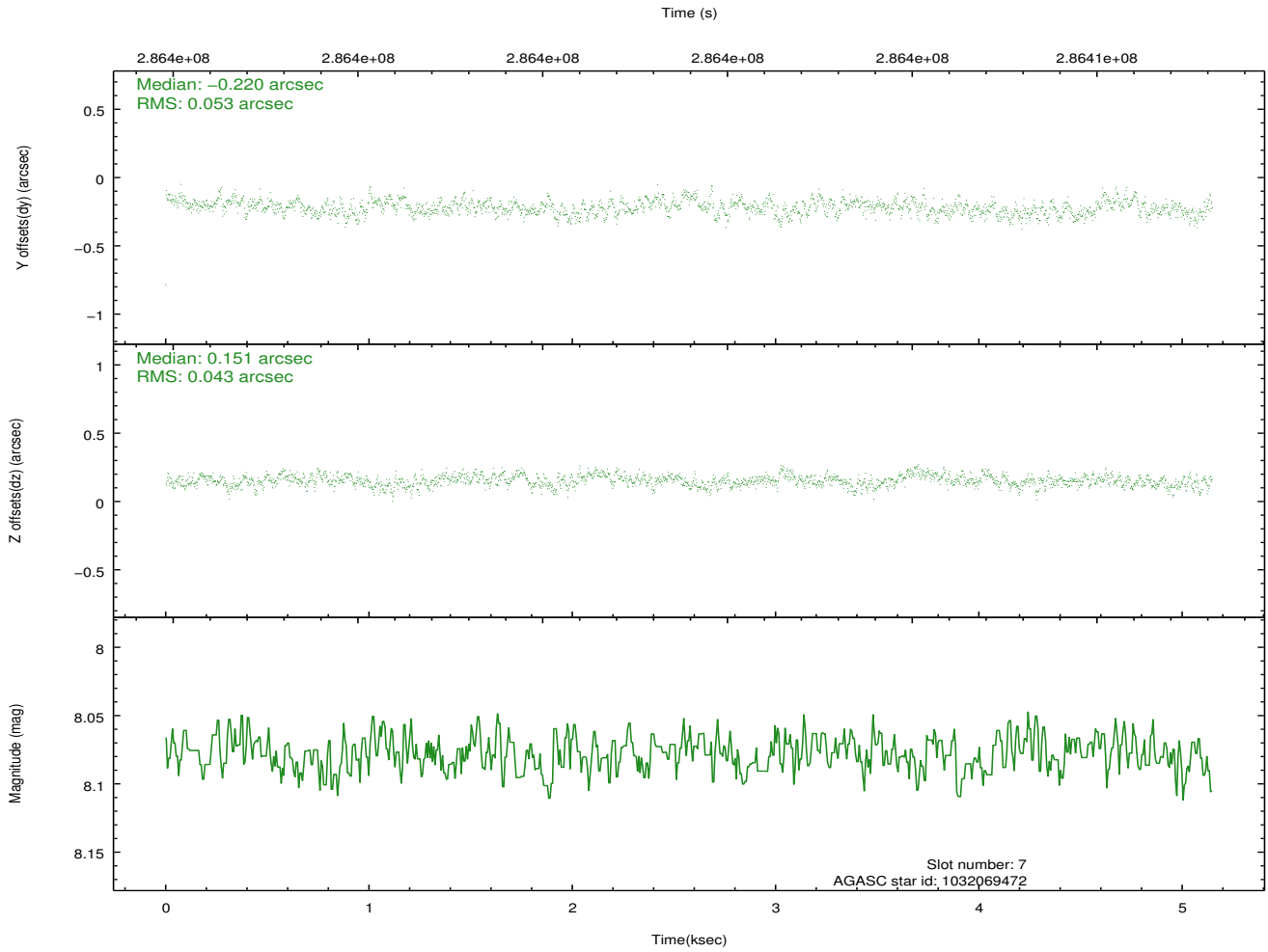
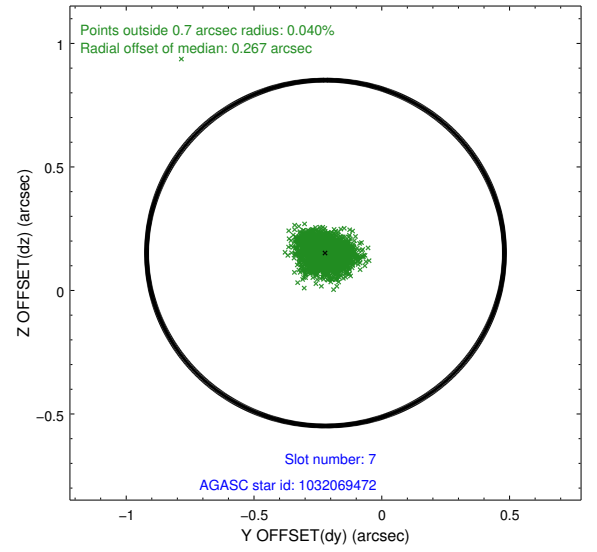
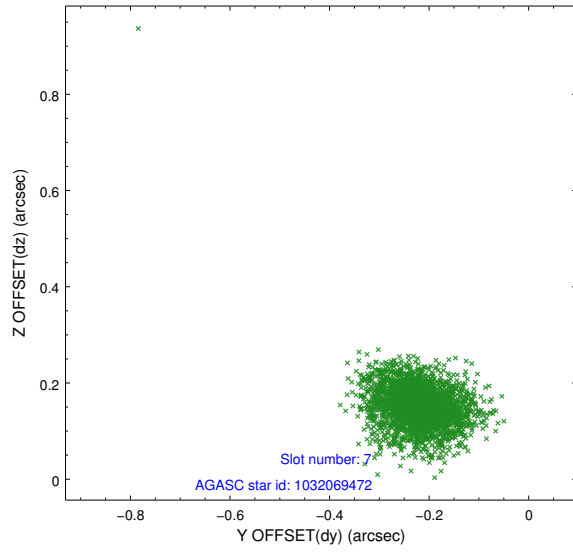
2.4.3 Slot 5



2.4.4 Slot 6

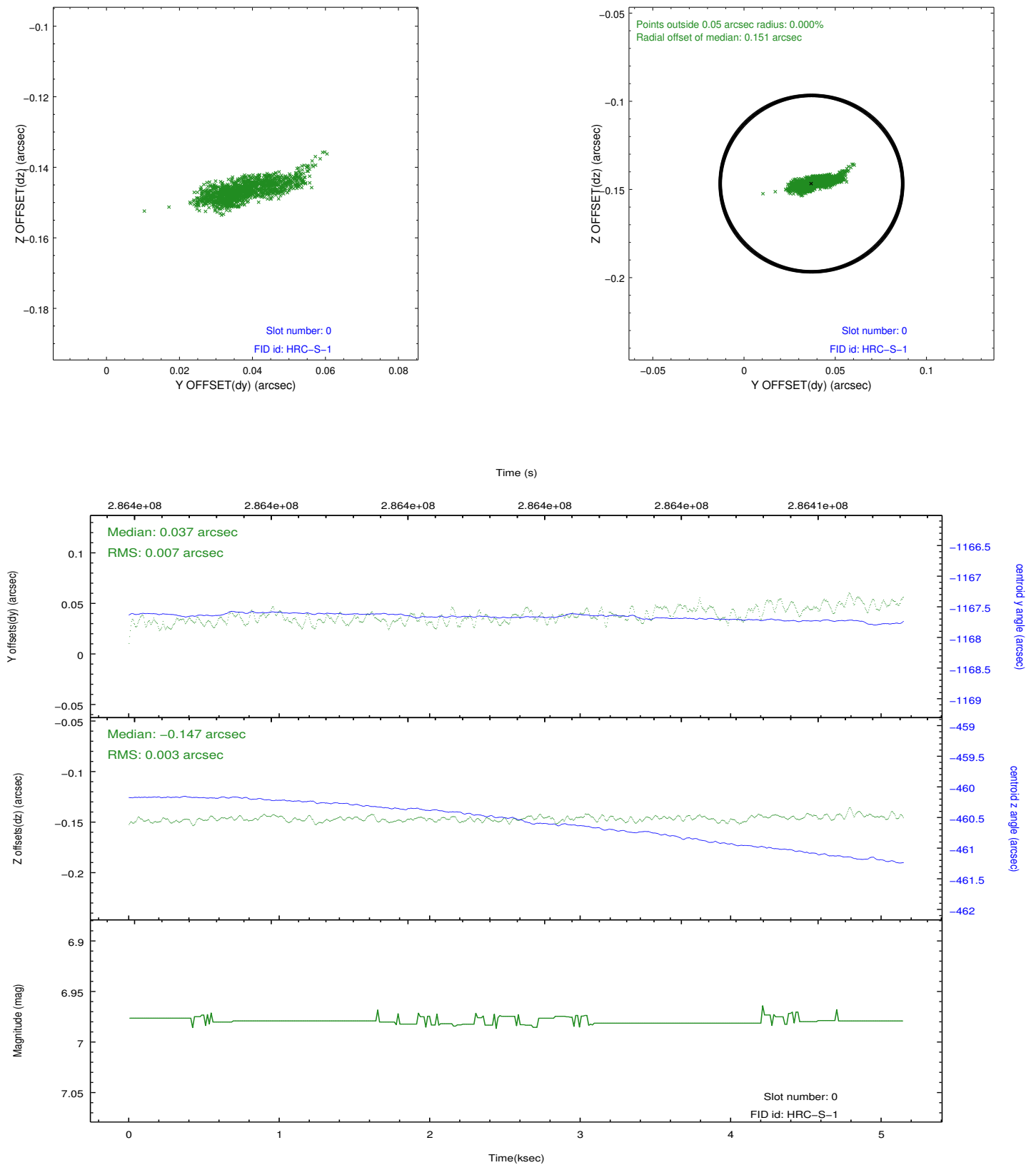


2.4.5 Slot 7

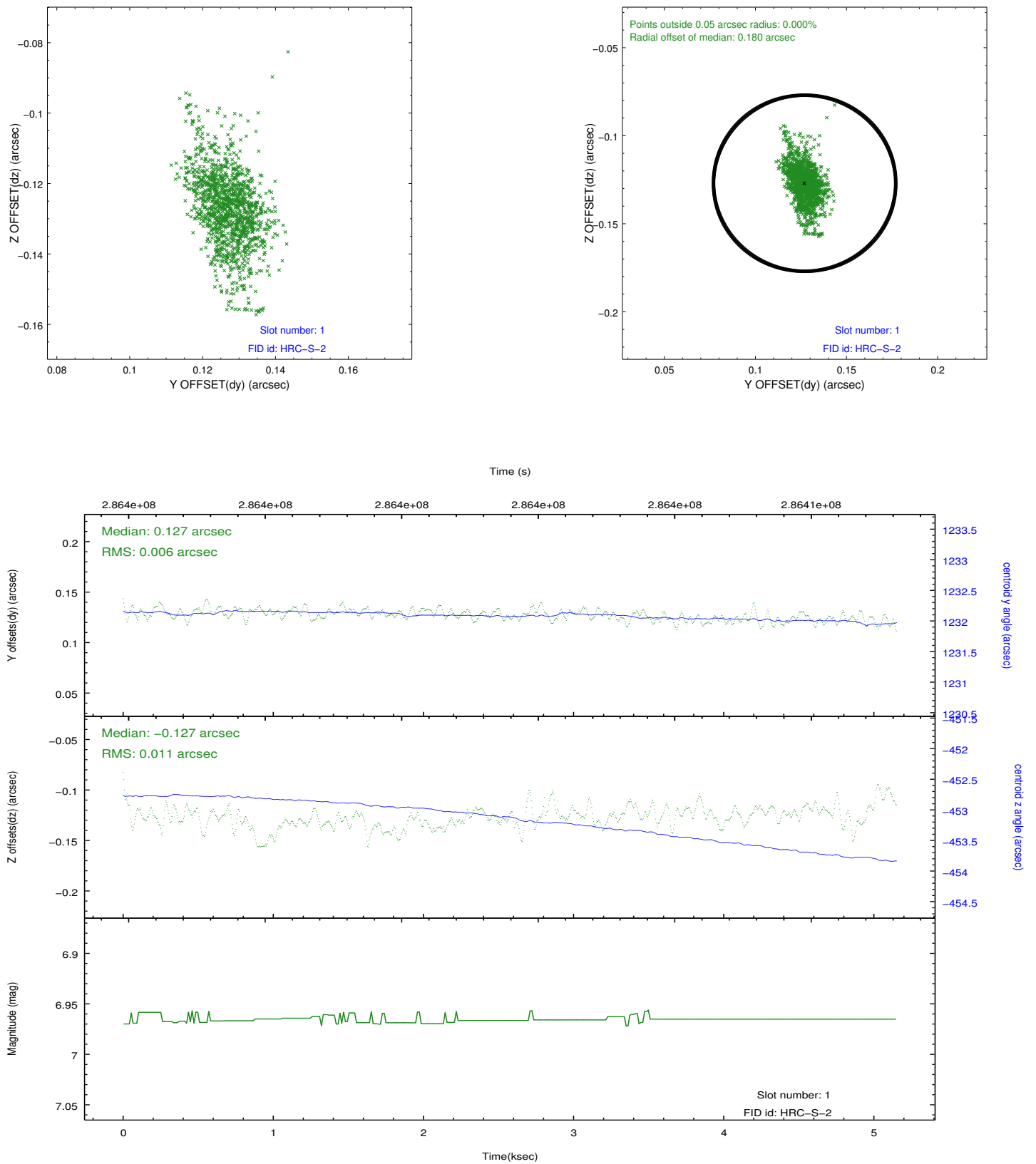


2.5 FID Slots

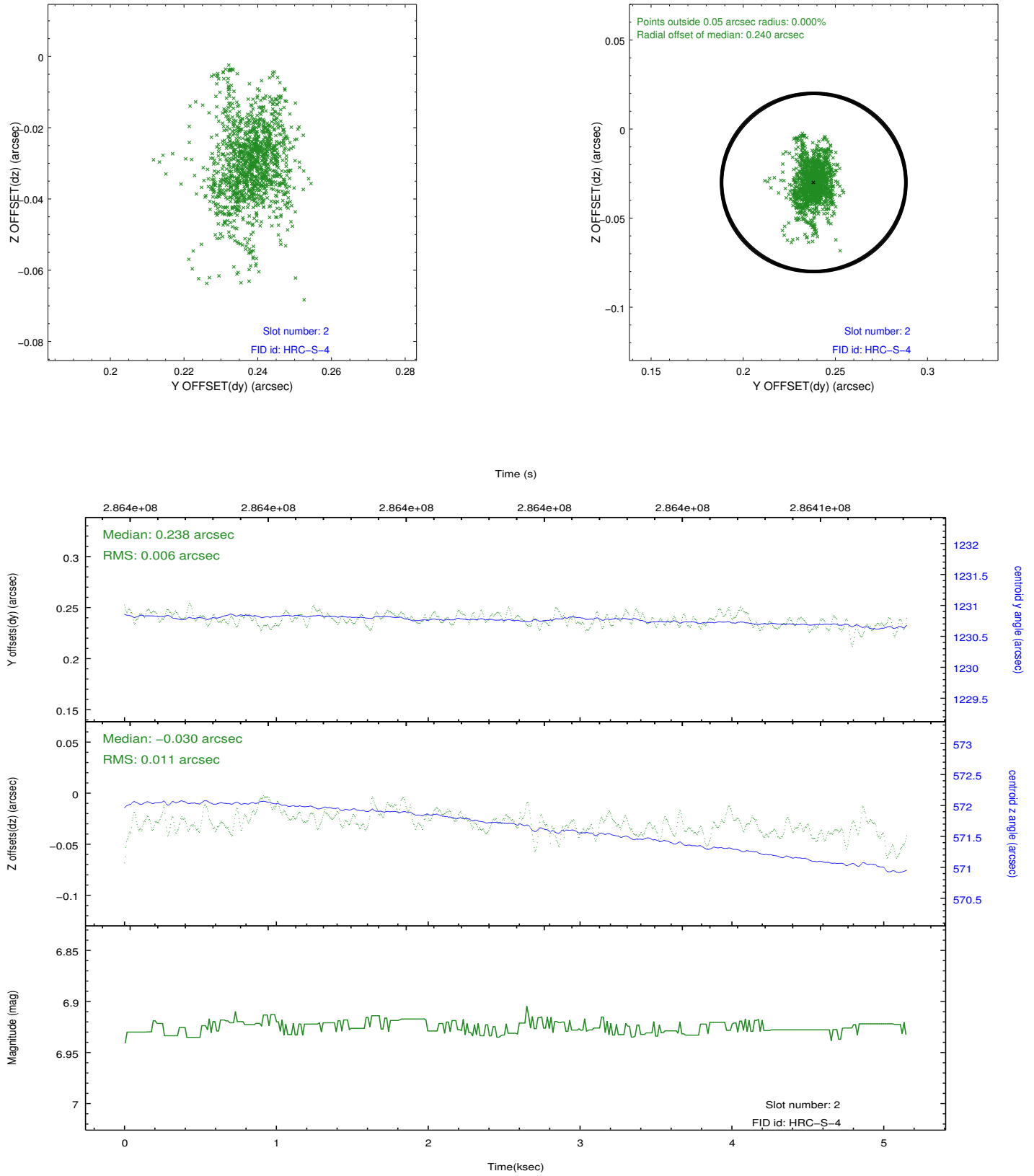
2.5.1 Slot 0



2.5.2 Slot 1



2.5.3 Slot 2



A Summary

A.1 Status

V&V Scientist	Jen Lauer
V&V Date (YYYY-MM-DD)	2012.08.14
V&V Edition	1
V&V Disposition and Status	OK
V&V Charge Time	5.14755024

A.2 Comments

Monitoring interval with obsid 6571 satisfied.