

V&V Reference Report

L2 ASCDS Version : 8.4.3

Observation 6542 - L2 Version 4
Chandra X-Ray Center

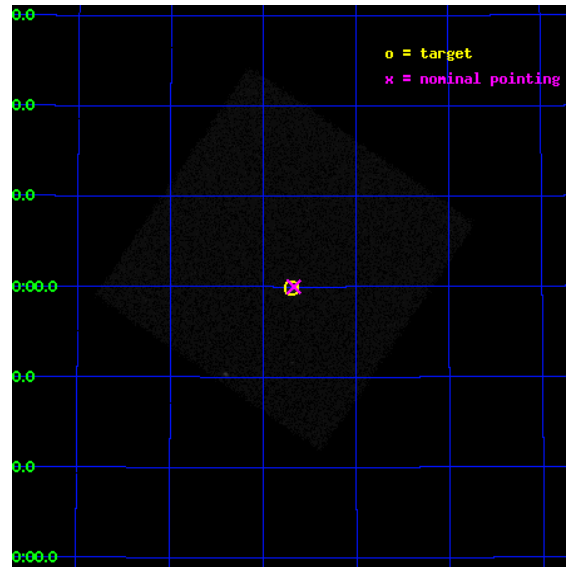
L2 Processing Date : Aug 10 2012

Contents

1	Front	2
2	OBI	3
2.1	OBI	3
2.1.1	Images	3
2.1.2	Parameters	4
2.1.3	Events	4
2.2	Compared Parameters	5
2.3	Aspect	6
2.4	Star Slots	9
2.4.1	Slot 3	9
2.4.2	Slot 4	10
2.4.3	Slot 5	11
2.4.4	Slot 6	12
2.4.5	Slot 7	13
2.5	FID Slots	14
2.5.1	Slot 0	14
2.5.2	Slot 1	15
2.5.3	Slot 2	16
A	Summary	17
A.1	Status	17
A.2	Comments	17

1 Front

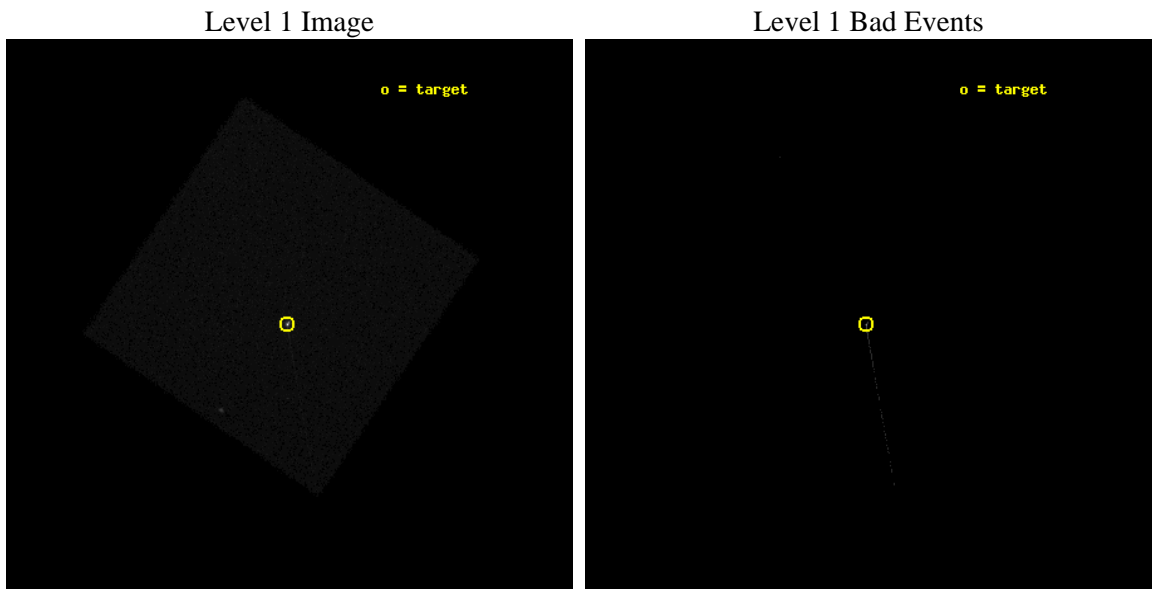
seq_num	290635	Sequence number
obs_id	6542	Observation id
title	Improving the De-Gap Corrections for the HRC-I	Proposal title
observer	Dr. CXC Calibration	Principal investigator
object	Capella	Source name
ra_targ	79.1725	Observer's specified target RA [deg]
dec_targ	45.998	Observer's specified target Dec [deg]
ra_nom	79.167416240973	Nominal RA [deg]
dec_nom	46.000068623455	Nominal Dec [deg]
roll_nom	169.34532343129	Nominal Roll [deg]
revision	4	Processing version of data
ontime	5158.8252385557	[s]
livetime	5109.1442109594	Ontime multiplied by DTCOR
l2events	356049	Number of level 2 events



2 OBI

2.1 OBI

2.1.1 Images



2.1.2 Parameters

obi_num	0	Obi number	sched_exp_time	4973.524000	[s] Scheduled observation exposure time
ascdsver	8.4.5	Processing system revision	ontime	5158.8252385557	[s]
caldbver	4.5.1.1	 	l1events	504134	Number of level 1 events
date	2012-08-10T18:07:15	Date and time of file creation			
revision	4	Processing version of data			

2.1.3 Events

Level 1 Events

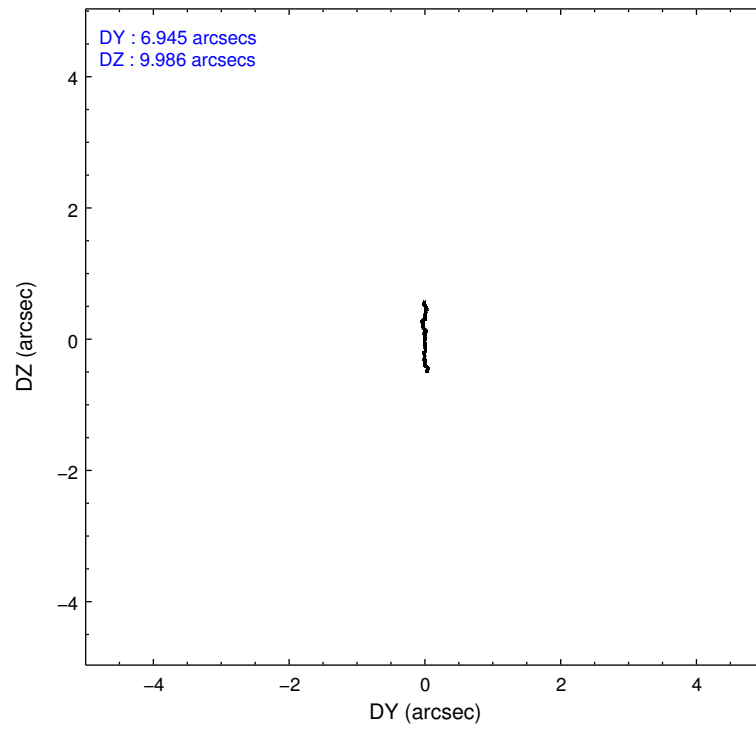
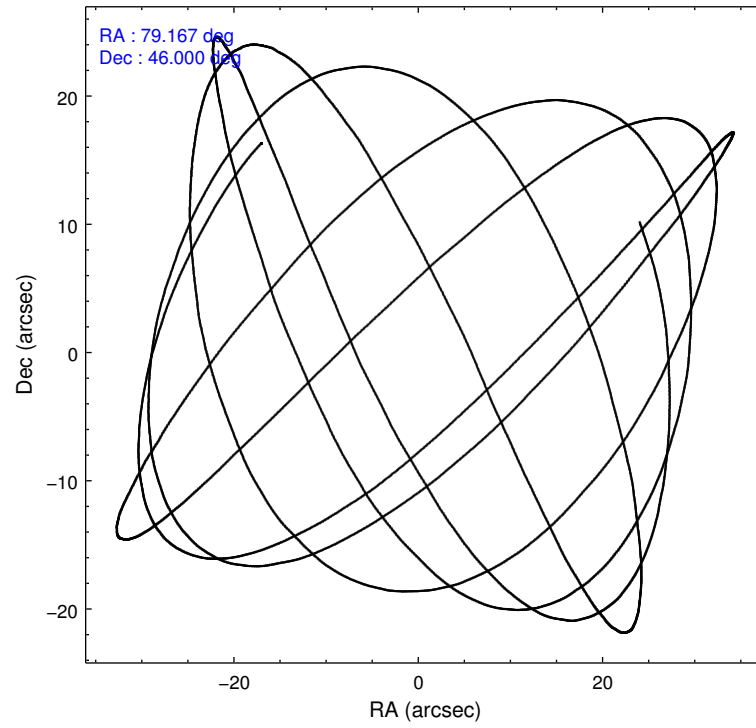
	segment 0
level 1 events	504134
rejected events	33331
rejected %	6%

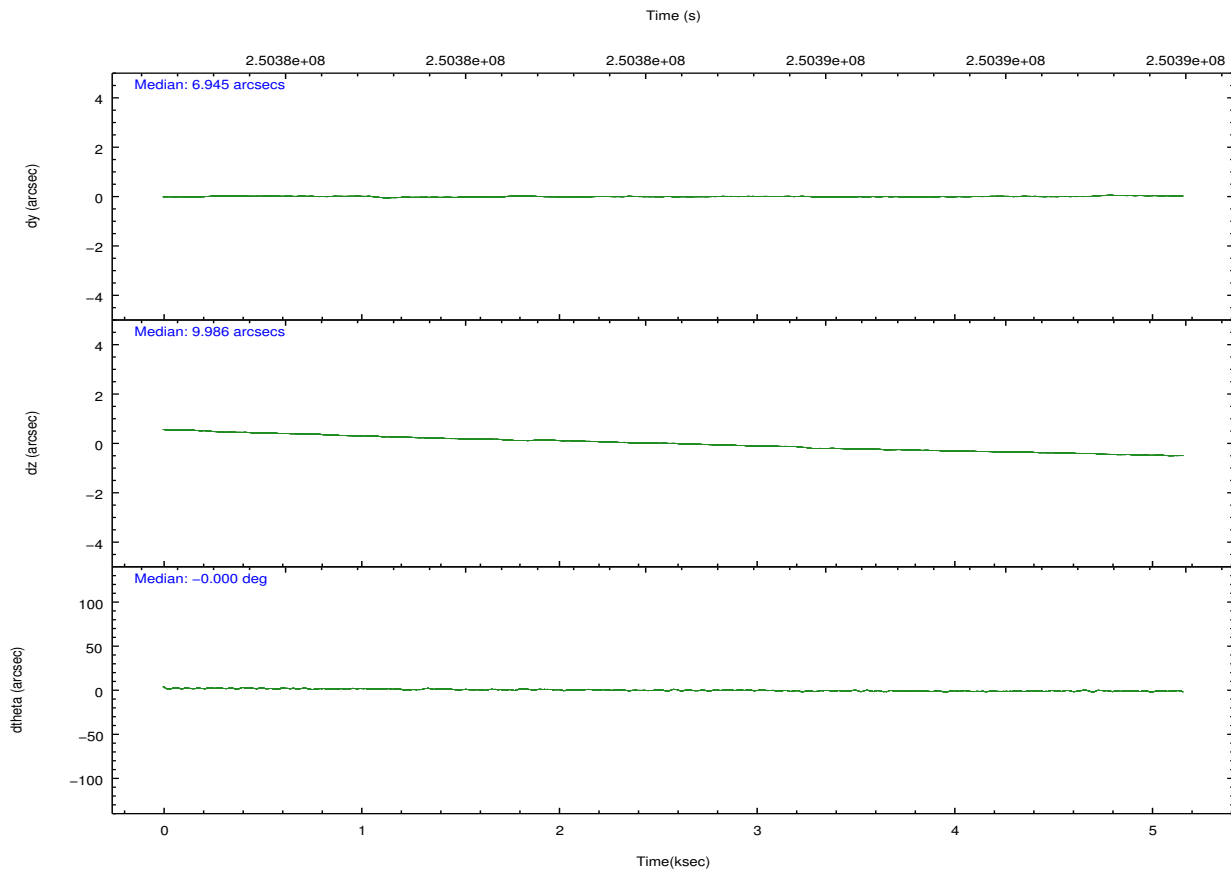
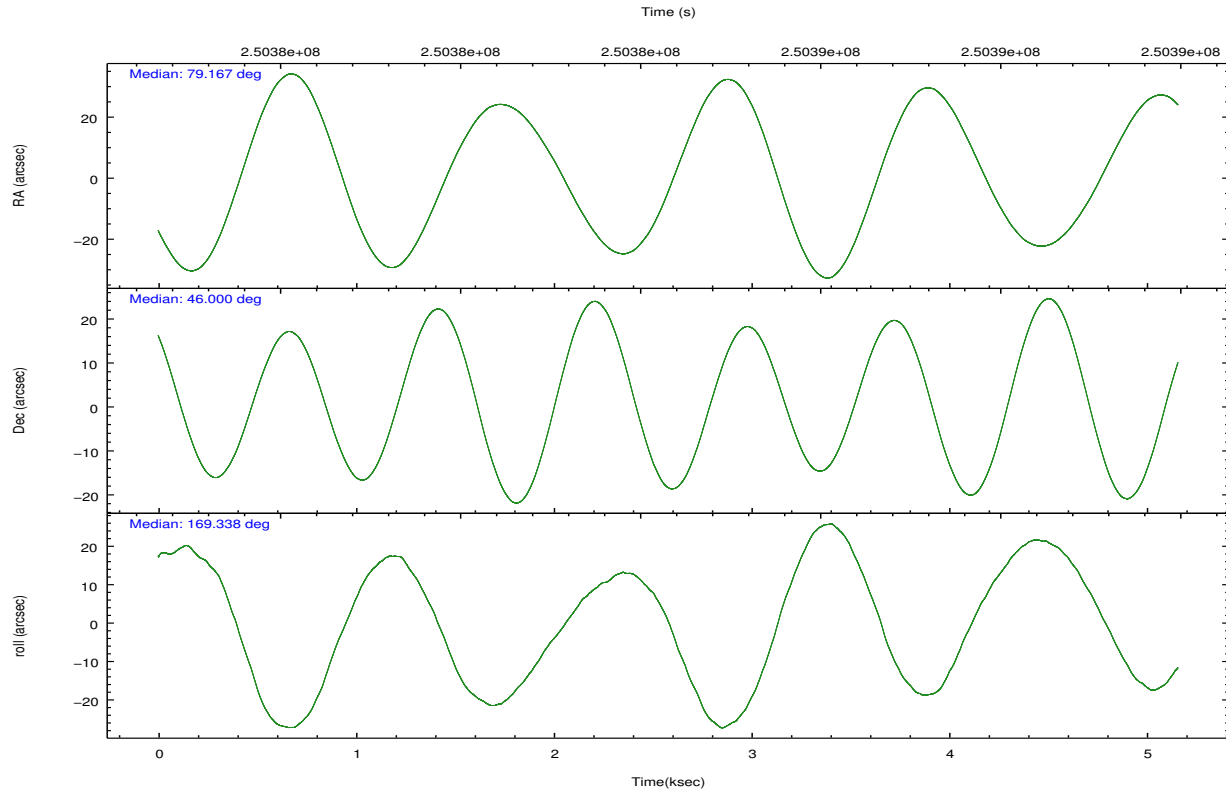
2.2 Compared Parameters

Parameter	Planned	Actual
Instrument	HRC	HRC
Detector	HRC-I	HRC-I
Grating	NONE	NONE
Data mode	OBSERVING	OBSERVING
Observation mode	POINTING	POINTING
[deg] Pointing RA	79.204002	79.16741624097313
[deg] Pointing Dec	46.009855	46.00006862345467
[deg] Pointing Roll	169.414489	169.3453234312946
[mm] SIM focus pos	-1.040293	-1.038866356238299
[mm] SIM defocus	0	0.001426264420575141
[mm] SIM translation stage pos	135.985494	135.9942860307773
[mm] SIM translation stage offset	-9	-9.008797139175726
[s] Observation start time (MET)	250382757.184000	250382380.99476
Observation start date	2005-12-07T22:44:53	2005-12-07T22:39:40
[s] Observation end time (MET)	250387730.184000	250387925.22002
Observation end date	2005-12-08T00:07:46	2005-12-08T00:12:05

Parameter	Planned	Actual
Obspar format version number	7	7
Obspar file type	PREDICTED	ACTUAL
Obspar update status	NONE	UPDATED

2.3 Aspect



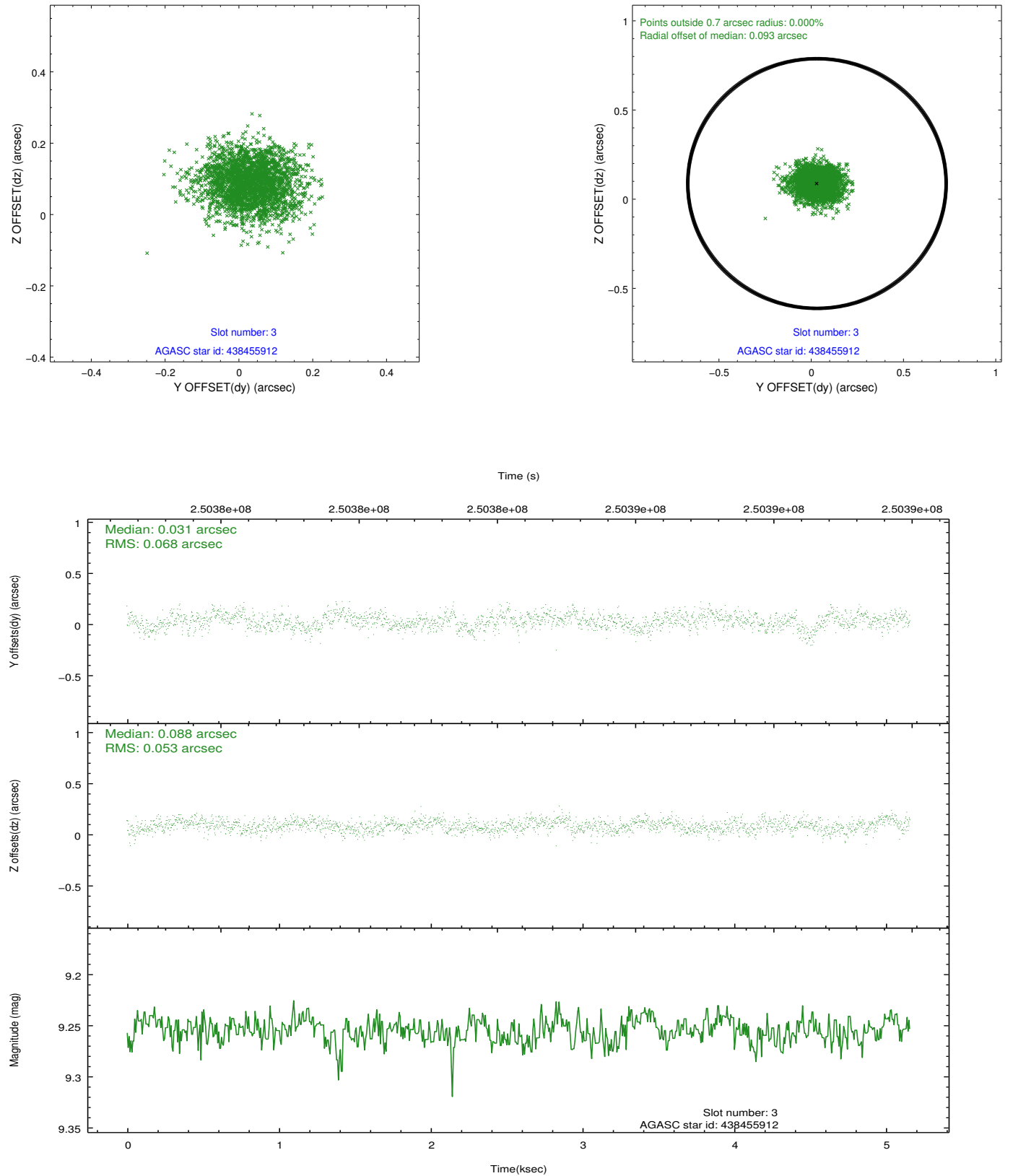


Slot Statistics

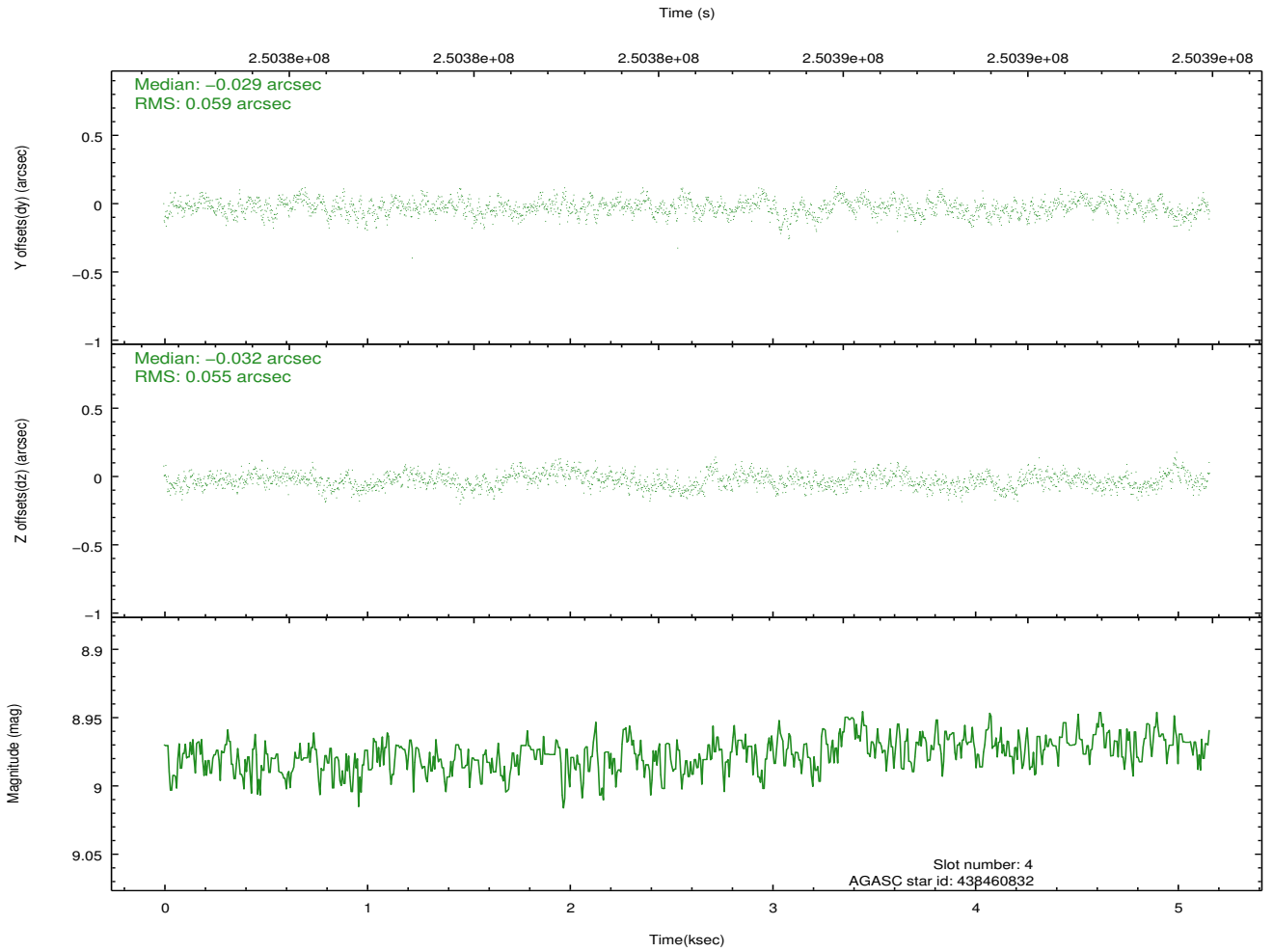
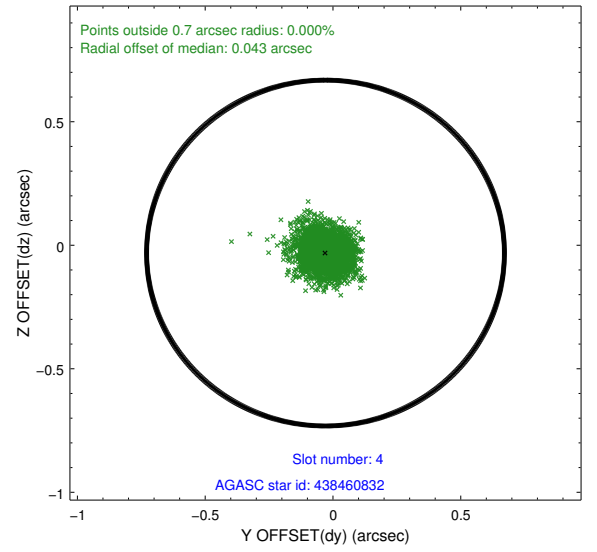
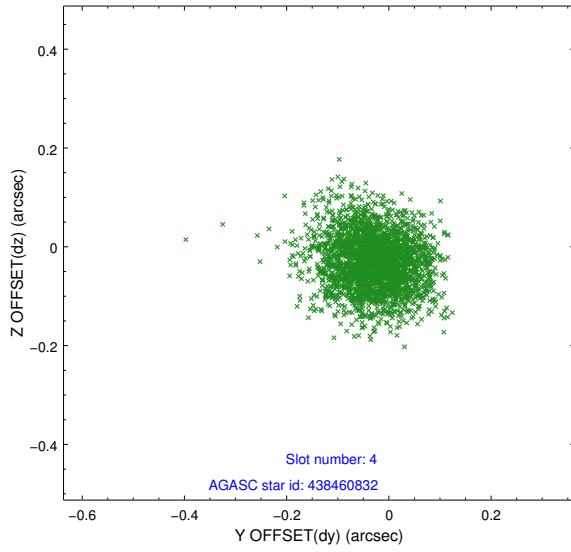
slot	status	id	mag	n_pts	med_dy	med_dz	dr1	dr2	ra	dec	mean_y	mean_z
0	FID	HRC-I-1	7.02	1259	0.081	-0.645	0.009	0.014	0.000000	0.000000	-762.56	-1482.96
1	FID	HRC-I-2	7.08	1259	-0.007	0.104	0.012	0.020	0.000000	0.000000	849.90	-1485.69
2	FID	HRC-I-3	7.16	1259	0.045	0.451	0.014	0.024	0.000000	0.000000	-1190.24	820.46
3	GUIDE	438455912	9.25	2516	0.031	0.088	0.091	0.151	78.251946	45.690923	2145.22	1554.06
4	GUIDE	438460832	8.98	2517	-0.029	-0.032	0.085	0.139	78.414614	45.554782	1657.70	1966.53
5	GUIDE	440150048	7.15	2518	0.002	-0.024	0.070	0.107	79.112838	46.416060	492.23	-1395.94
6	GUIDE	440163960	8.88	2516	0.064	-0.065	0.082	0.132	79.298370	45.827072	-353.17	601.69
7	GUIDE	440140240	9.98	2513	-0.063	0.035	0.145	0.245	78.889349	46.726437	1237.93	-2395.01

2.4 Star Slots

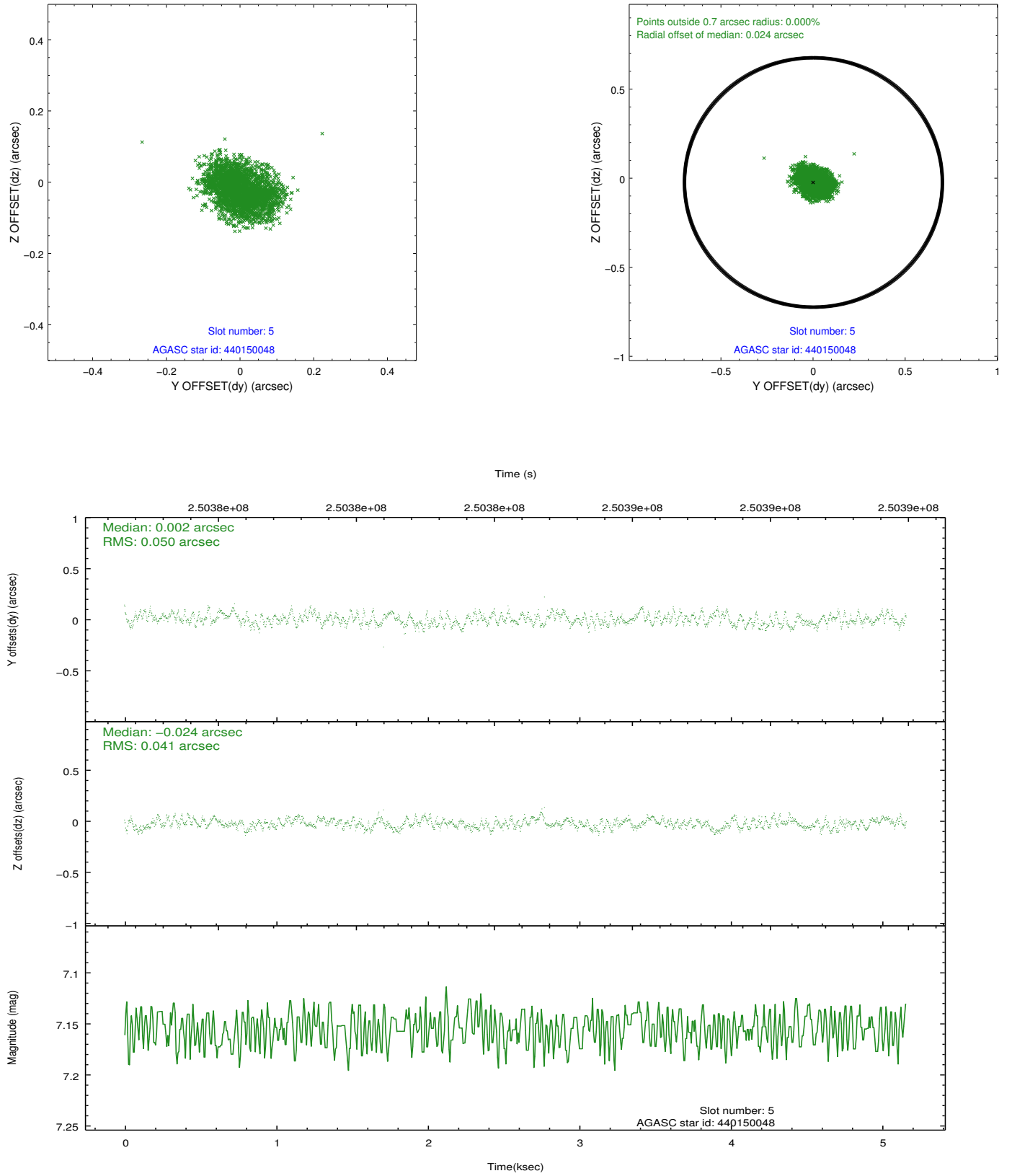
2.4.1 Slot 3



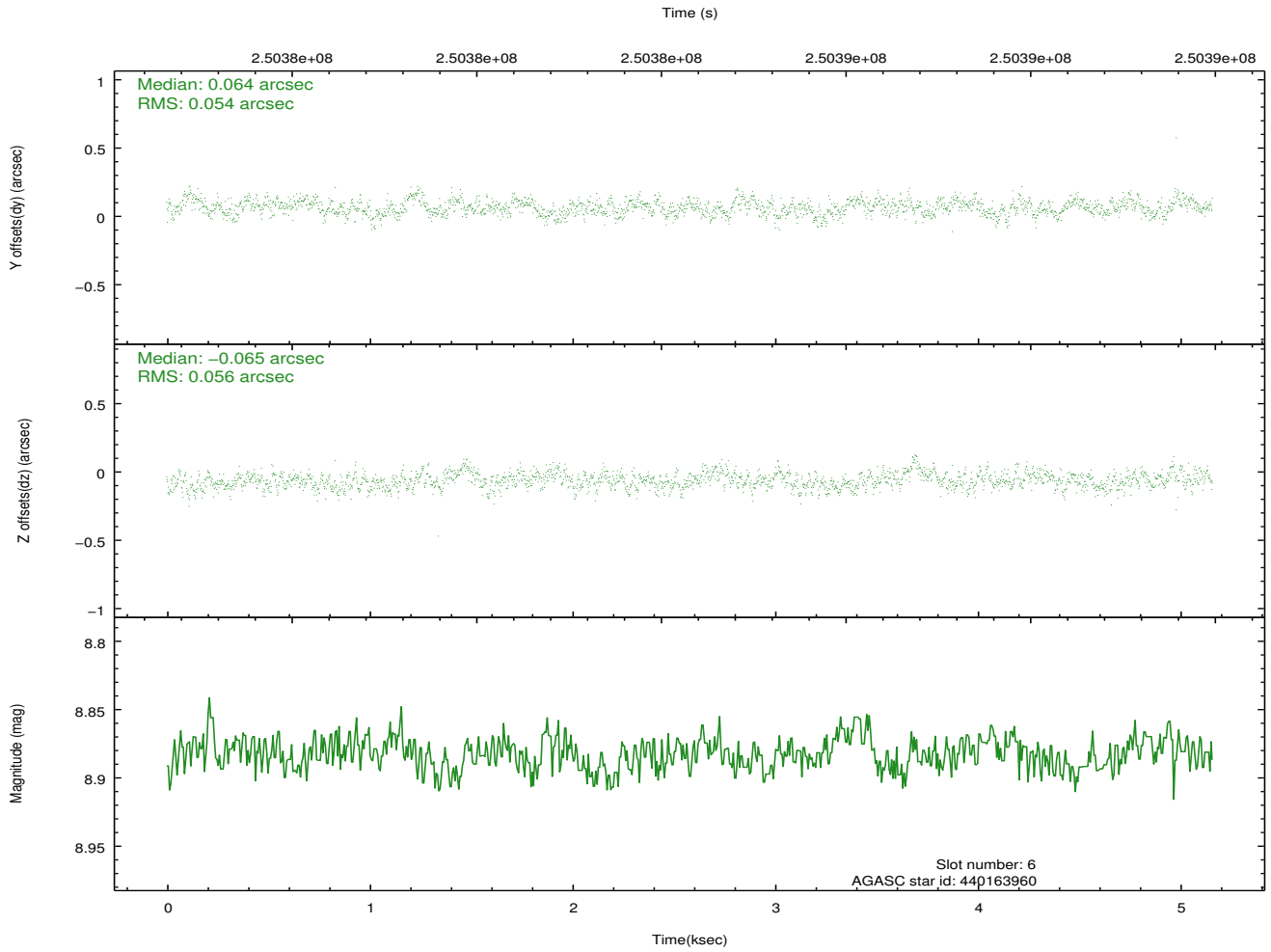
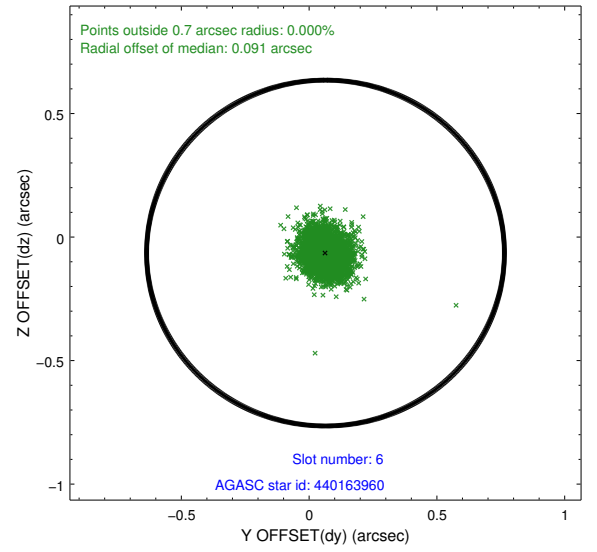
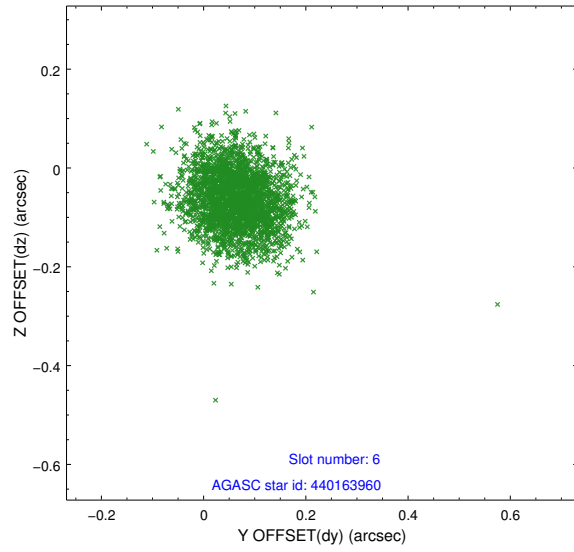
2.4.2 Slot 4



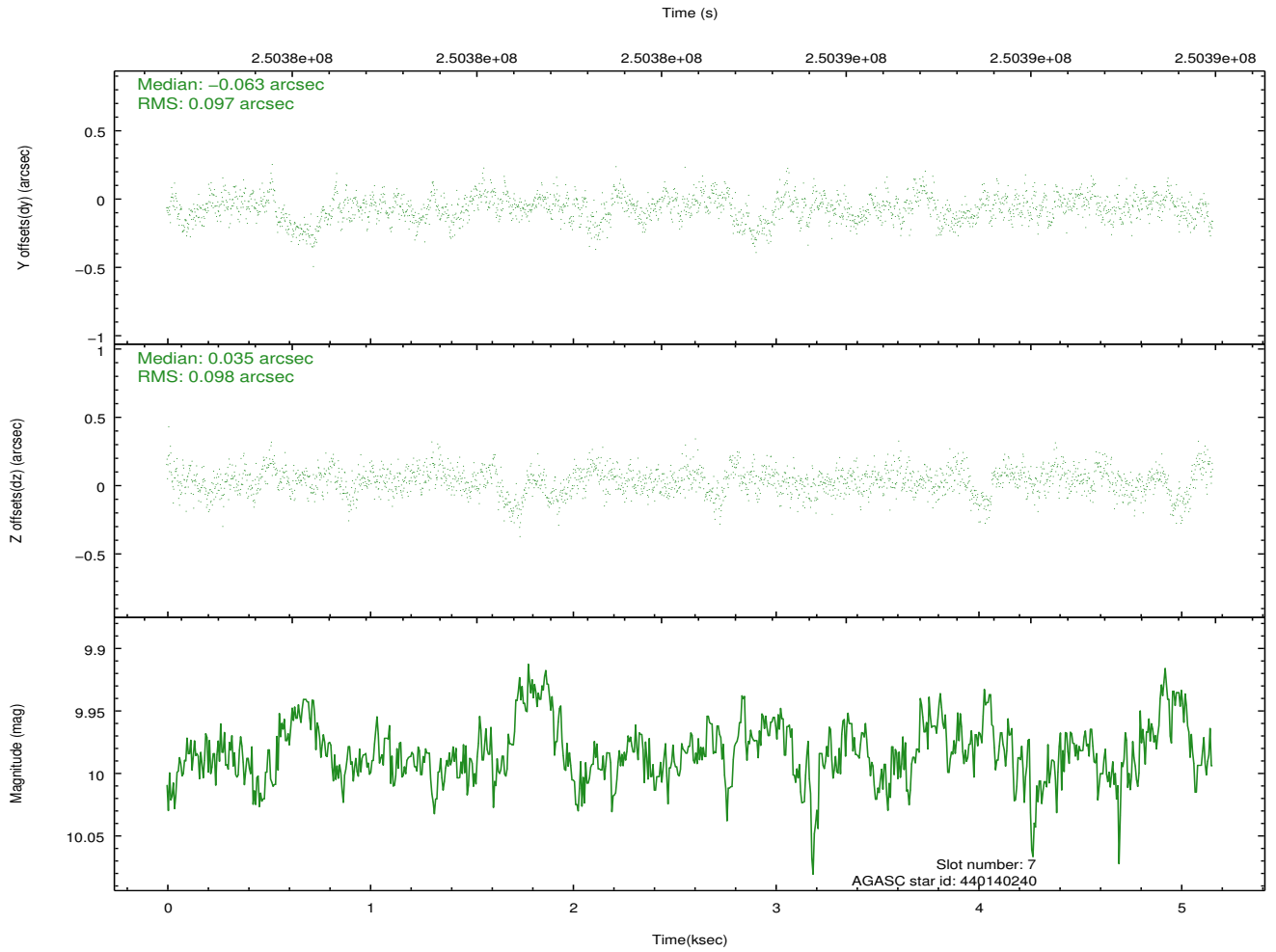
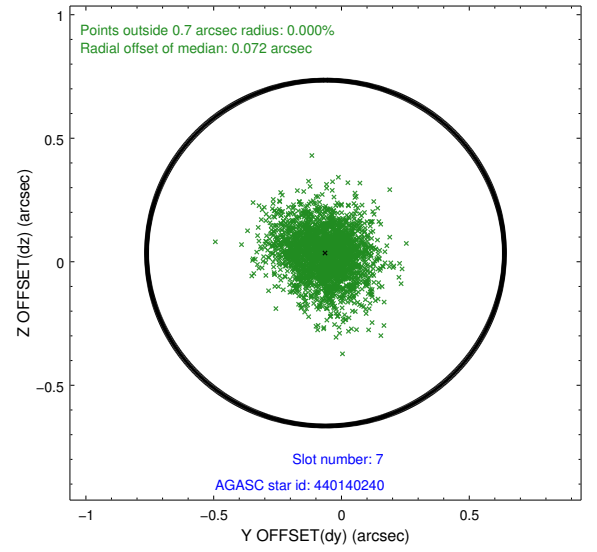
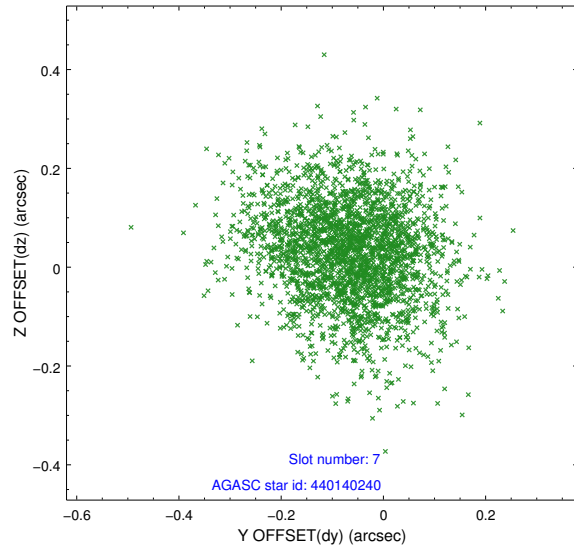
2.4.3 Slot 5



2.4.4 Slot 6

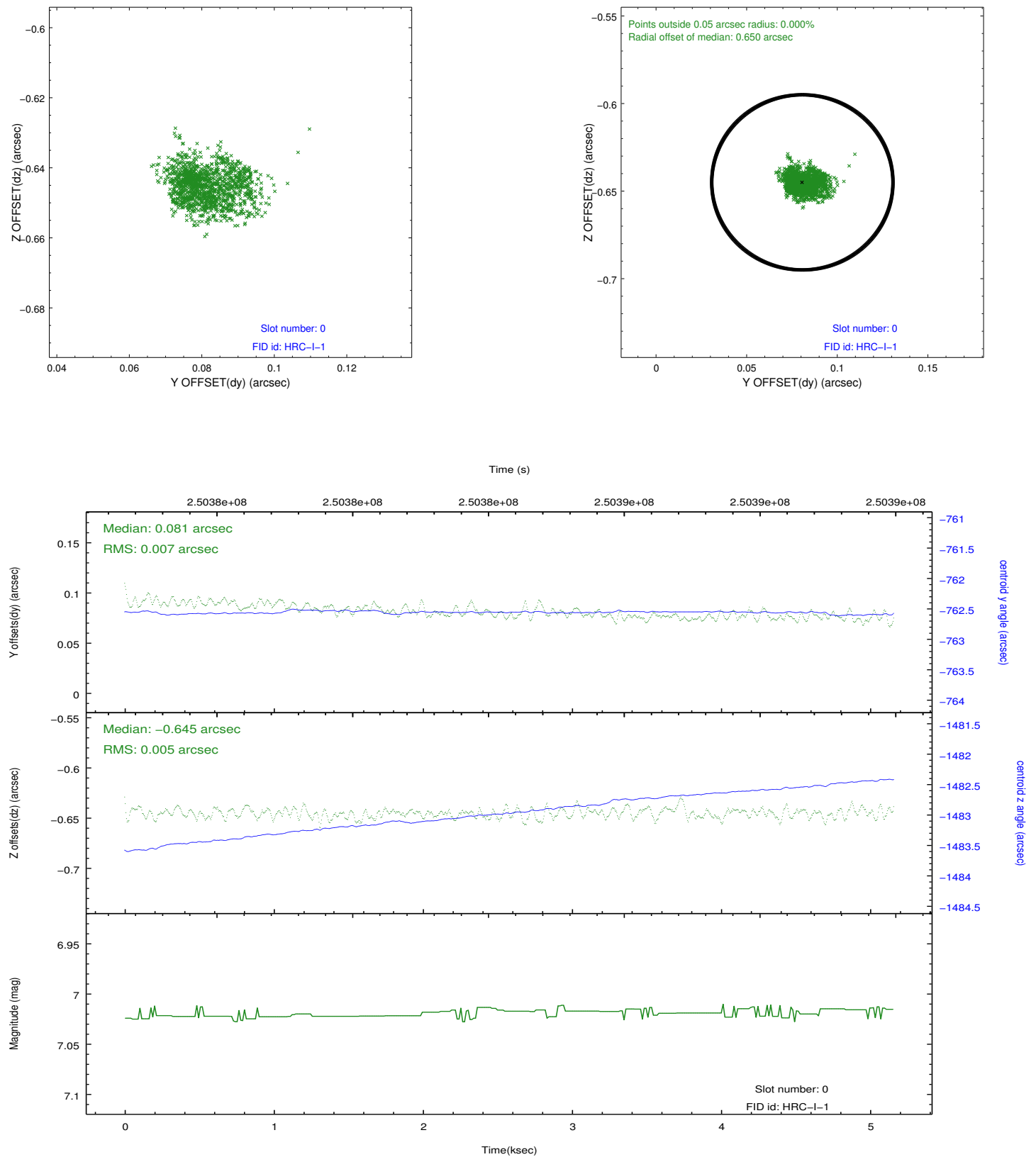


2.4.5 Slot 7

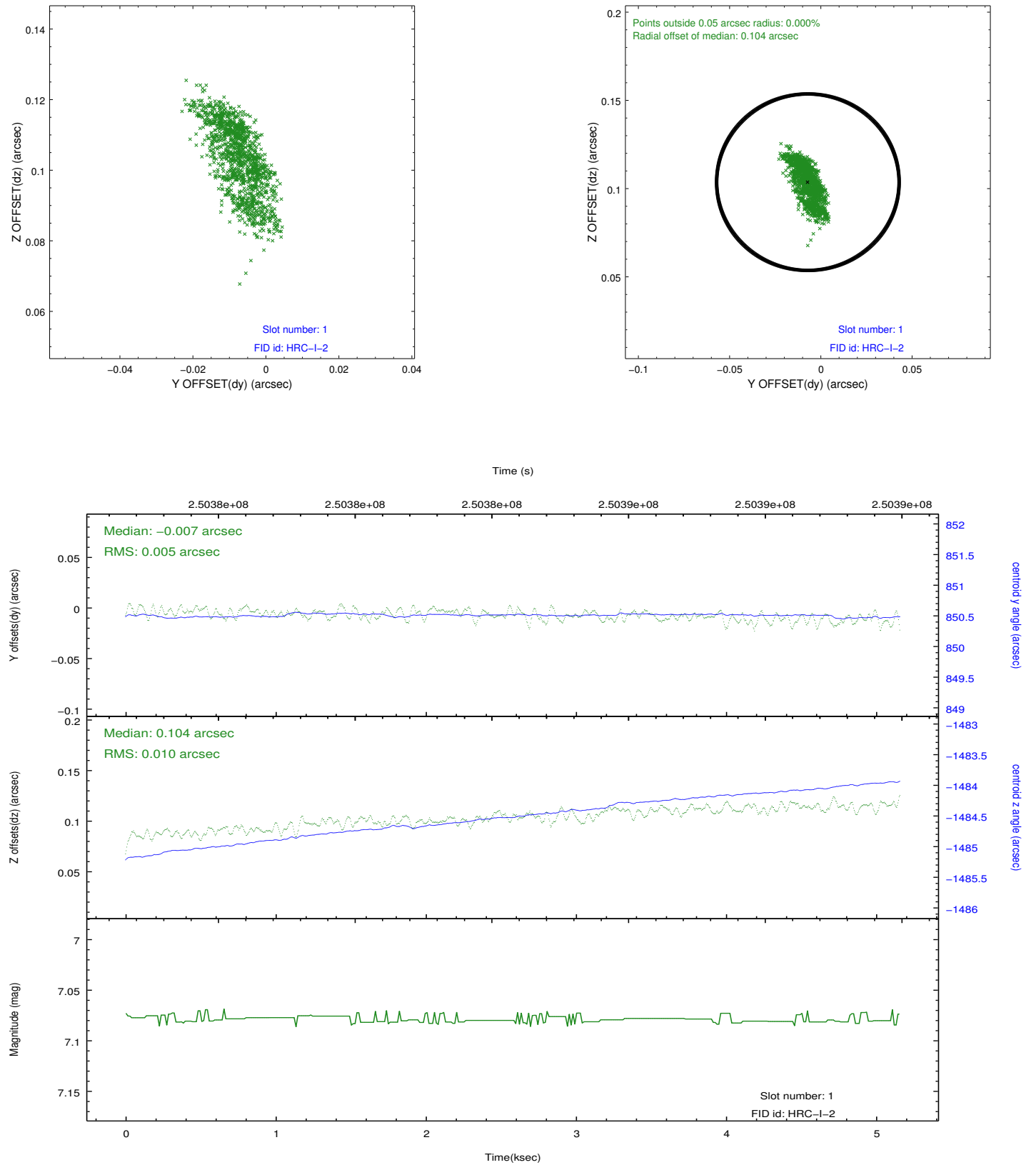


2.5 FID Slots

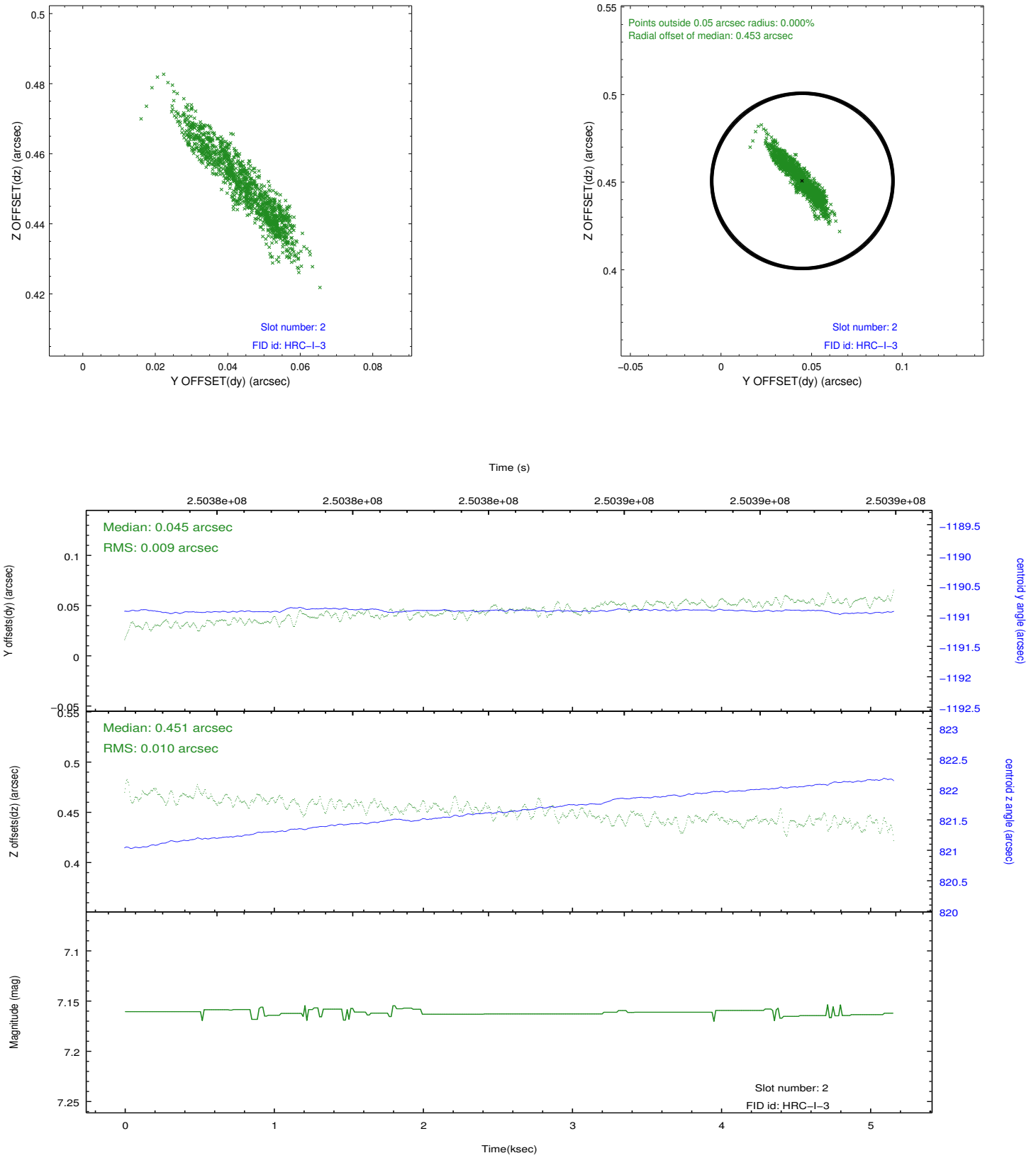
2.5.1 Slot 0



2.5.2 Slot 1



2.5.3 Slot 2



A Summary

A.1 Status

V&V Scientist	Jen Lauer
V&V Date (YYYY-MM-DD)	2012.08.15
V&V Edition	1
V&V Disposition and Status	OK
V&V Charge Time	5.159081

A.2 Comments

High offset of the fid lights is expected due to the SIM position.