

V&V Reference Report

L2 ASCDS Version : 8.4.3

Observation 6452 - L2 Version 3
Chandra X-Ray Center

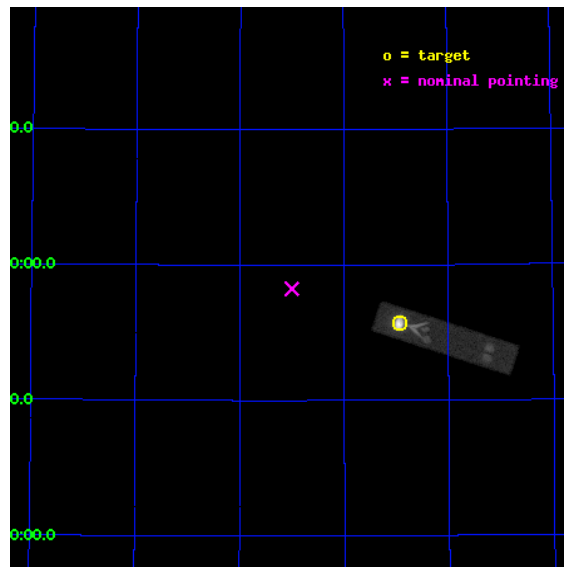
L2 Processing Date : Aug 10 2012

Contents

1	Front	2
2	OBI	3
2.1	OBI	3
2.1.1	Images	3
2.1.2	Parameters	4
2.1.3	Events	4
2.2	Compared Parameters	5
2.3	Aspect	6
2.4	Star Slots	9
2.4.1	Slot 3	9
2.4.2	Slot 4	10
2.4.3	Slot 5	11
2.4.4	Slot 6	12
2.4.5	Slot 7	13
2.5	FID Slots	14
2.5.1	Slot 0	14
2.5.2	Slot 1	15
2.5.3	Slot 2	16
A	Summary	17
A.1	Status	17
A.2	Comments	17

1 Front

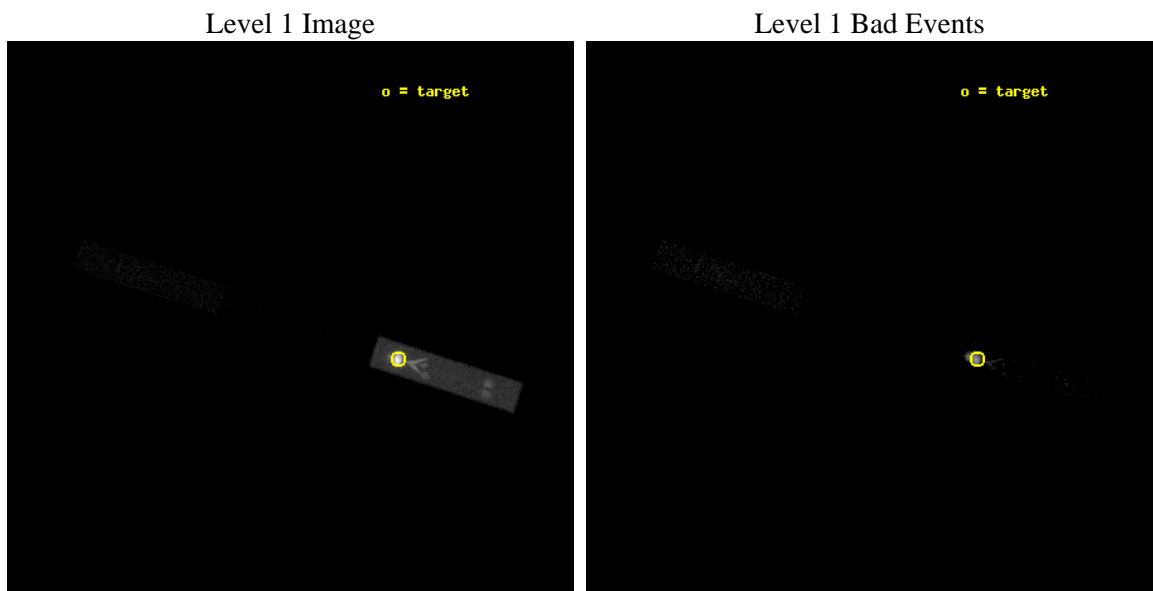
seq_num	290545	Sequence number
obs_id	6452	Observation id
title	AO7 Measurements of the optical/UV Transmission of the HRC and ACIS Filters.	Proposal title
observer	Dr. CXC Calibration	Principal investigator
object	Vega	Source name
ra_targ	279.235	Observer's specified target RA [deg]
dec_targ	38.783778	Observer's specified target Dec [deg]
ra_nom	279.75014193203	Nominal RA [deg]
dec_nom	38.912615180327	Nominal Dec [deg]
roll_nom	17.727777986031	Nominal Roll [deg]
revision	3	Processing version of data
ontime	2186.5813513398	[s]
livetime	842.33844865874	Ontime multiplied by DTCOR
l2events	390248	Number of level 2 events



2 OBI

2.1 OBI

2.1.1 Images



2.1.2 Parameters

obi_num	2	Obi number	sched_exp_time	2000.000000	[s] Scheduled observation exposure time
ascdsver	8.4.5	Processing system revision	ontime	2186.5813513398	[s]
caldbver	4.5.1.1	 	l1events	452158	Number of level 1 events
date	2012-08-10T23:29:20	Date and time of file creation			
revision	3	Processing version of data			

2.1.3 Events

Level 1 Events

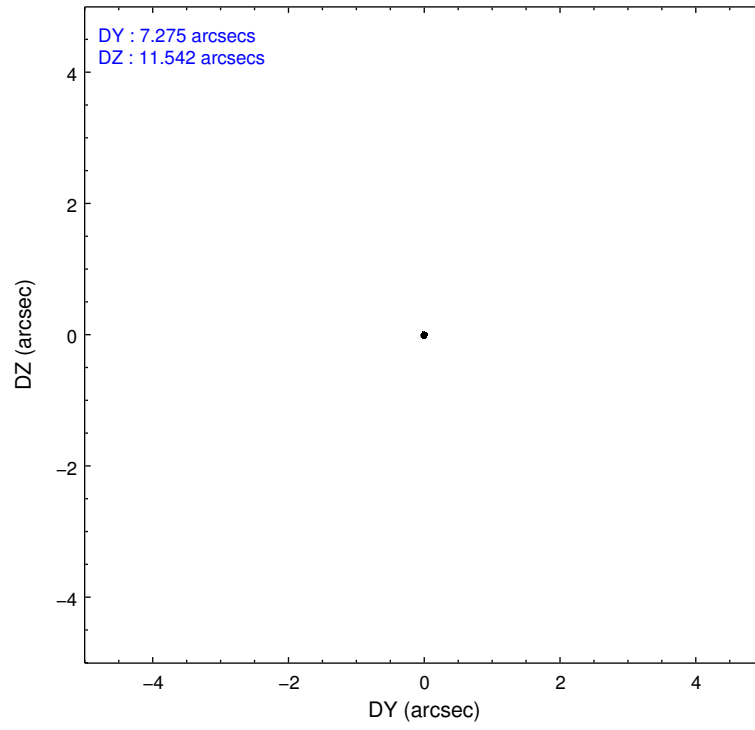
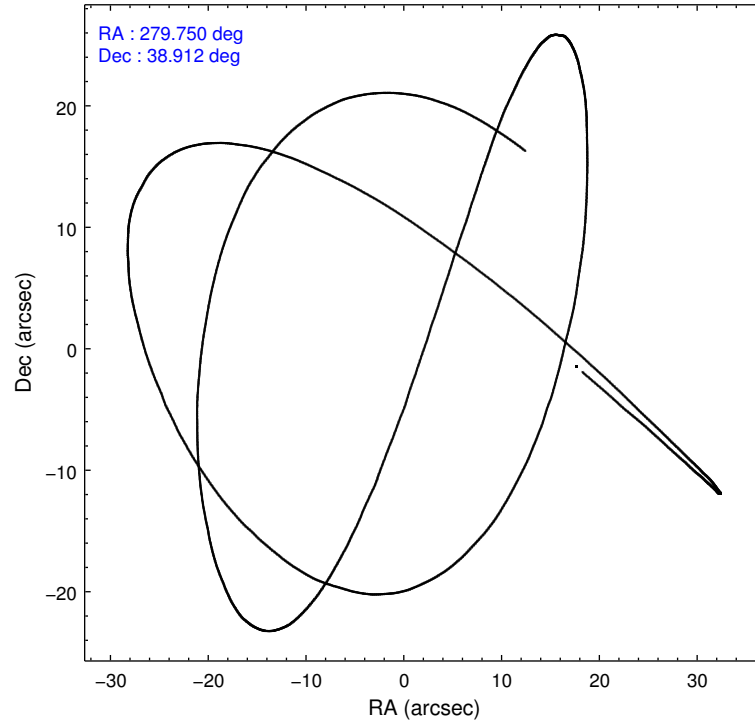
	segment 1	segment 2	segment 3
level 1 events	447338	295	4525
rejected events	44175	276	4470
rejected %	9%	93%	98%

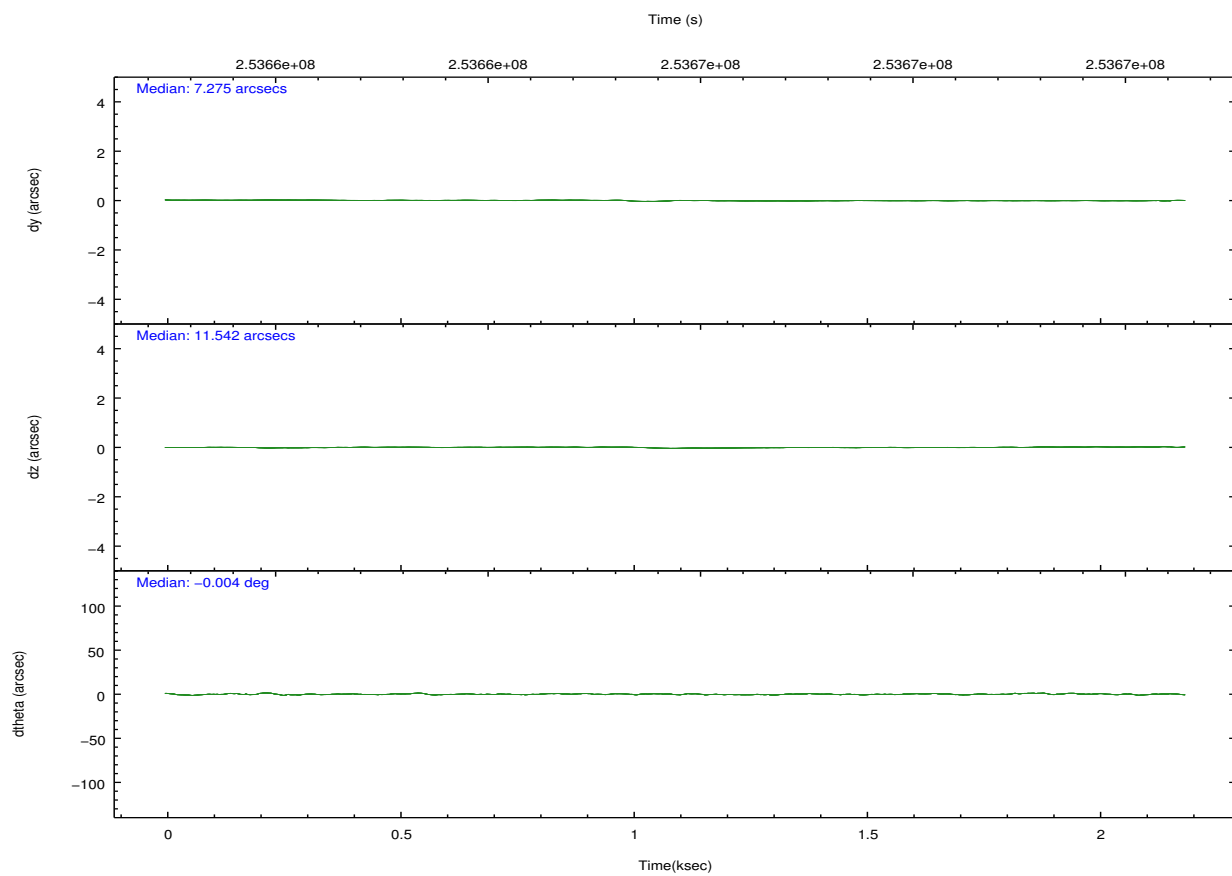
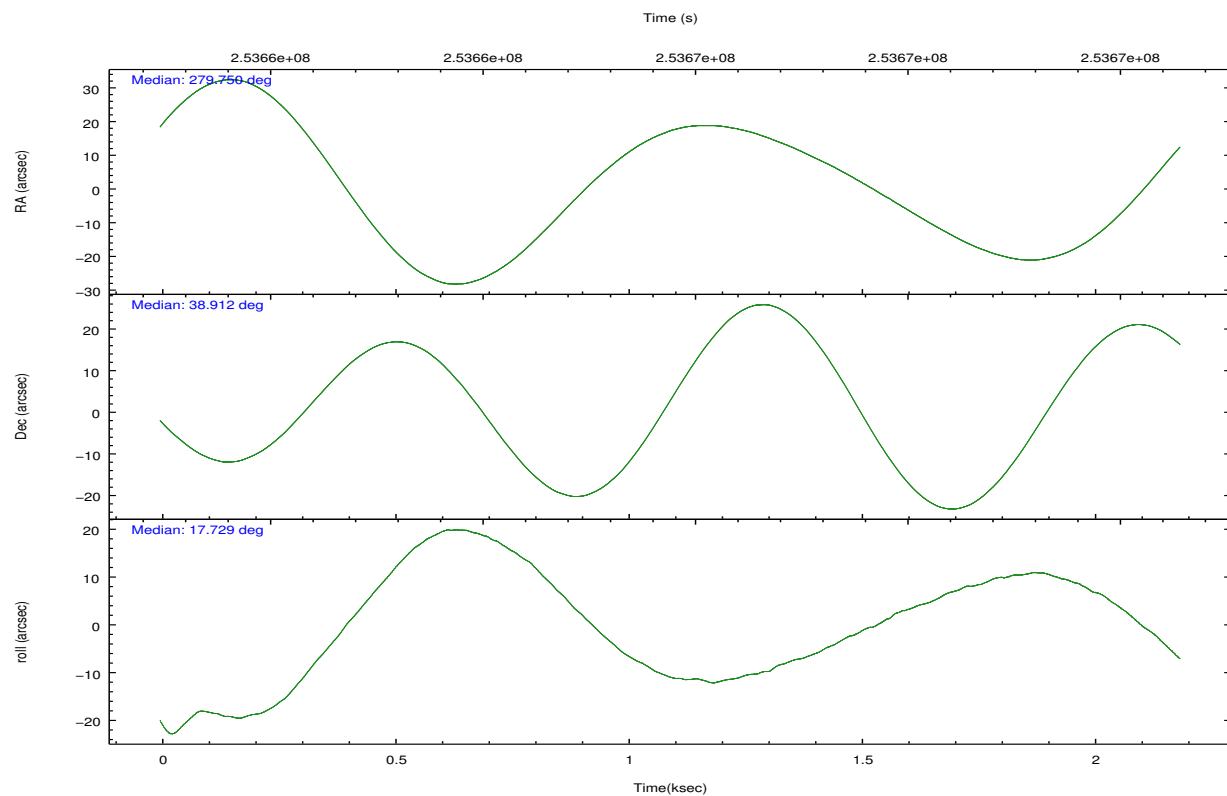
2.2 Compared Parameters

Parameter	Planned	Actual
Instrument	HRC	HRC
Detector	HRC-S	HRC-S
Grating	NONE	NONE
Data mode	OBSERVING	OBSERVING
Observation mode	POINTING	POINTING
[deg] Pointing RA	279.726759	279.7501419320336
[deg] Pointing Dec	38.890528	38.91261518032721
[deg] Pointing Roll	17.675160	17.7277779860311
[s] Window start time (MET)	247190464.184000	247190464.184000
[s] Window stop time (MET)	255052865.184000	255052865.184000
[mm] SIM focus pos	-1.533336	-1.526339935833849
[mm] SIM defocus	7.710433287538843e-07	0.006996703570447904
[mm] SIM translation stage pos	250.455976	250.466033080201
[mm] SIM translation stage offset	0	-0.01005468664627074
[s] Observation start time (MET)	253664534.184000	253664157.47171
Observation start date	2006-01-14T22:21:09	2006-01-14T22:15:57
[s] Observation end time (MET)	253666534.184000	253666669.23433
Observation end date	2006-01-14T22:54:29	2006-01-14T22:57:49

Parameter	Planned	Actual
Obspar format version number	7	7
Obspar file type	PREDICTED	ACTUAL
Obspar update status	NONE	UPDATED

2.3 Aspect



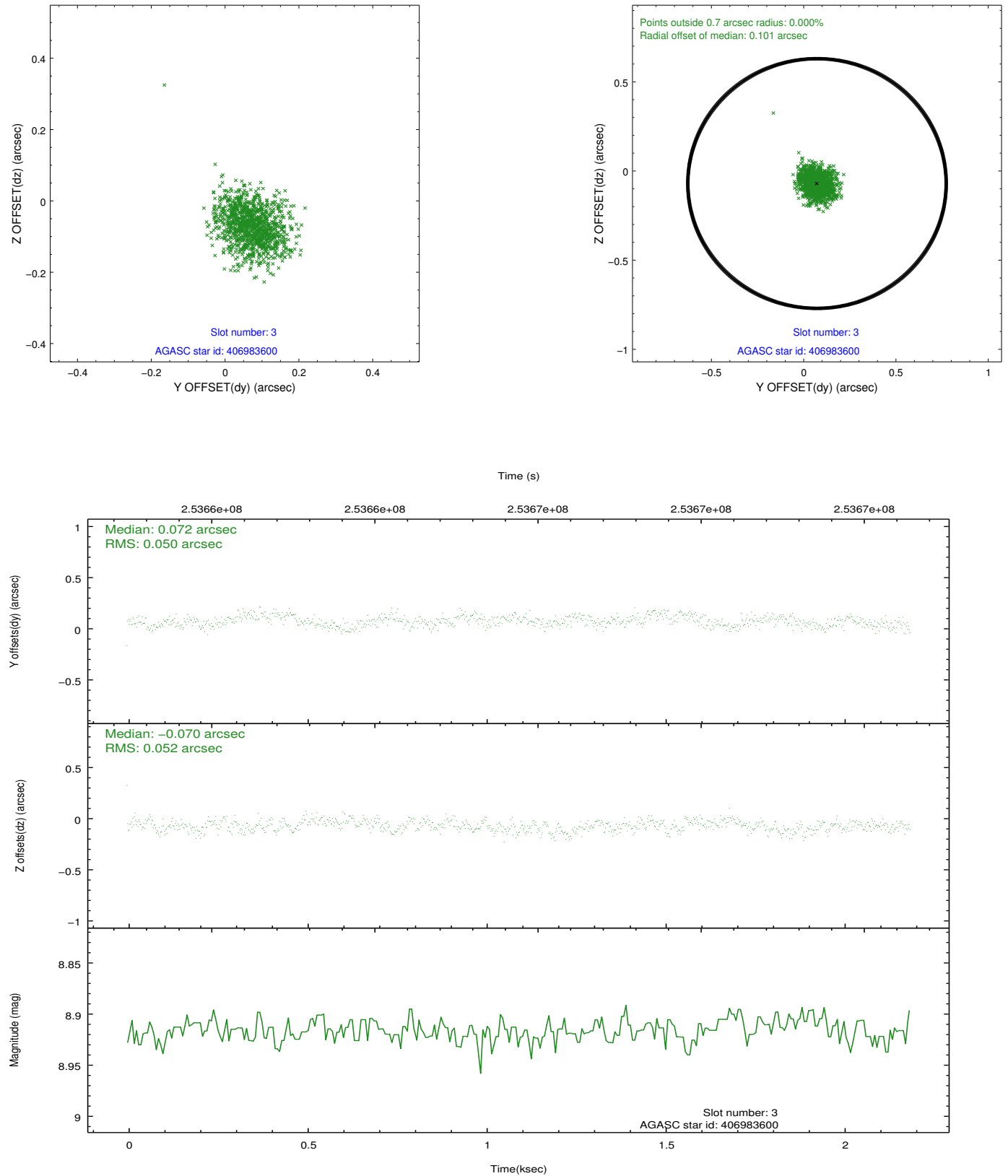


Slot Statistics

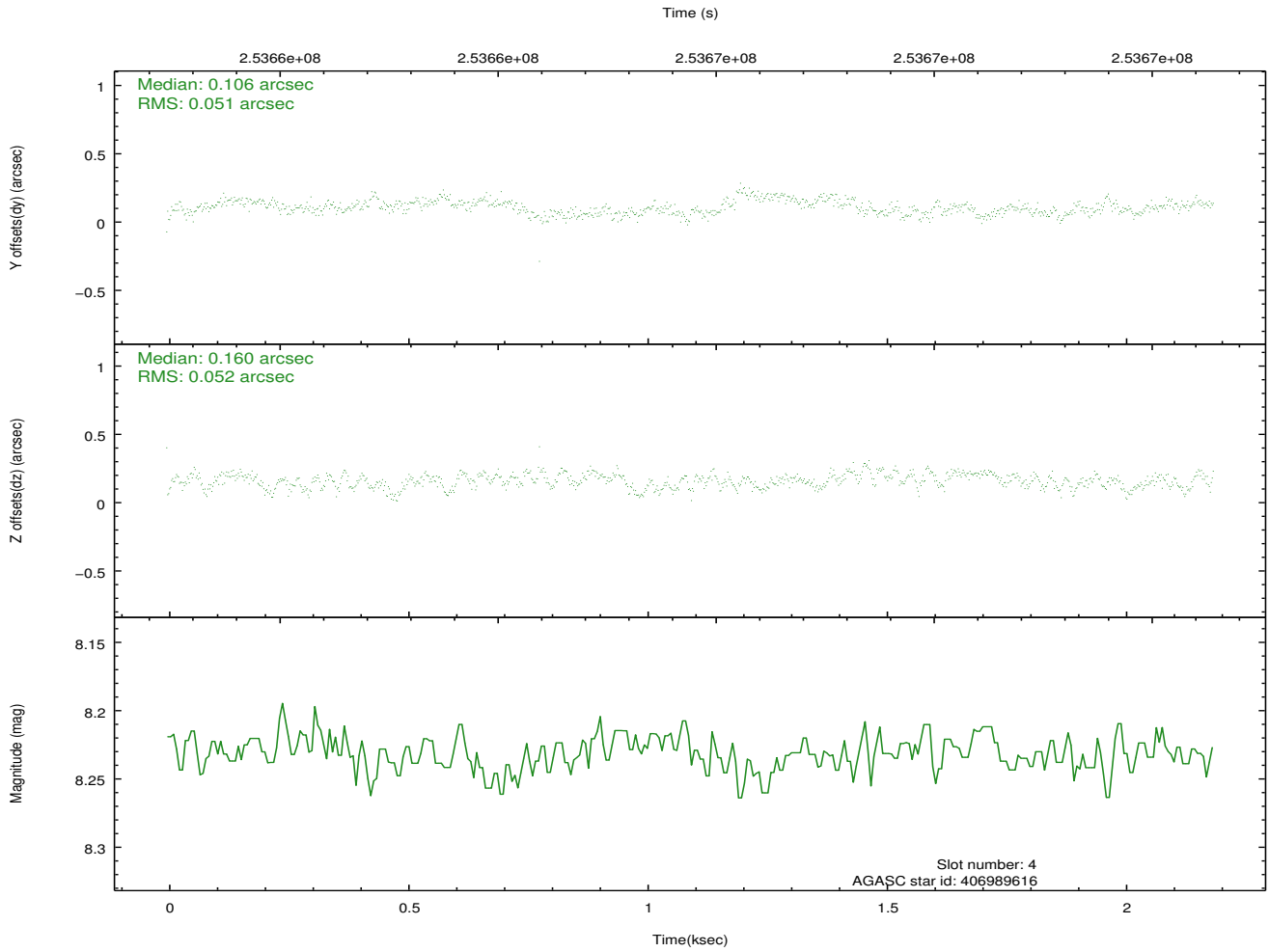
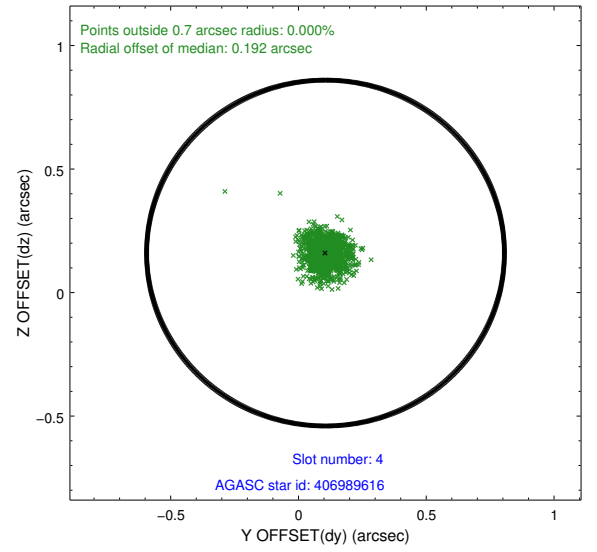
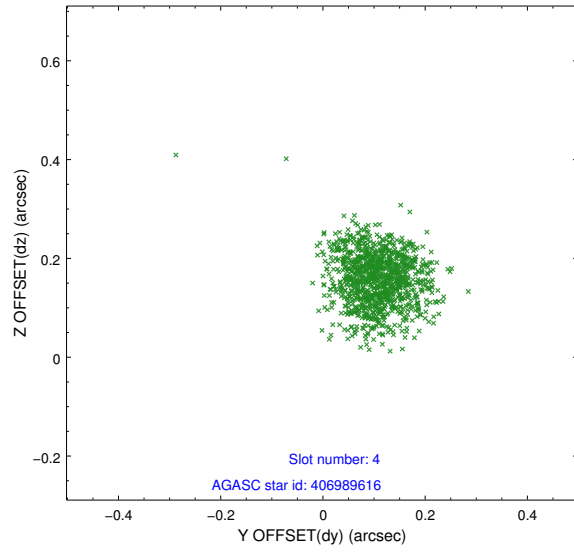
slot	status	id	mag	n_pts	med_dy	med_dz	dr1	dr2	ra	dec	mean_y	mean_z
0	FID	HRC-S-1	7.01	534	0.112	-0.132	0.007	0.013	0.000000	0.000000	-1161.43	-460.24
1	FID	HRC-S-2	7.01	534	0.186	-0.117	0.005	0.010	0.000000	0.000000	1236.13	-453.72
2	FID	HRC-S-3	7.02	534	0.092	-0.053	0.007	0.012	0.000000	0.000000	-1161.86	568.51
3	GUIDE	406983600	8.92	1067	0.072	-0.070	0.077	0.121	279.940957	39.020708	713.65	264.71
4	GUIDE	406989616	8.23	1068	0.106	0.160	0.076	0.120	279.202881	38.520843	-1808.02	-815.44
5	GUIDE	407513096	8.13	1067	-0.185	-0.060	0.061	0.098	279.928965	39.436841	1131.08	1703.12
6	GUIDE	407521232	8.64	1068	-0.004	-0.026	0.095	0.154	279.628883	39.431715	333.27	1940.81
7	GUIDE	406985120	7.42	1067	0.004	-0.011	0.074	0.129	278.839732	38.894839	-2359.36	782.93

2.4 Star Slots

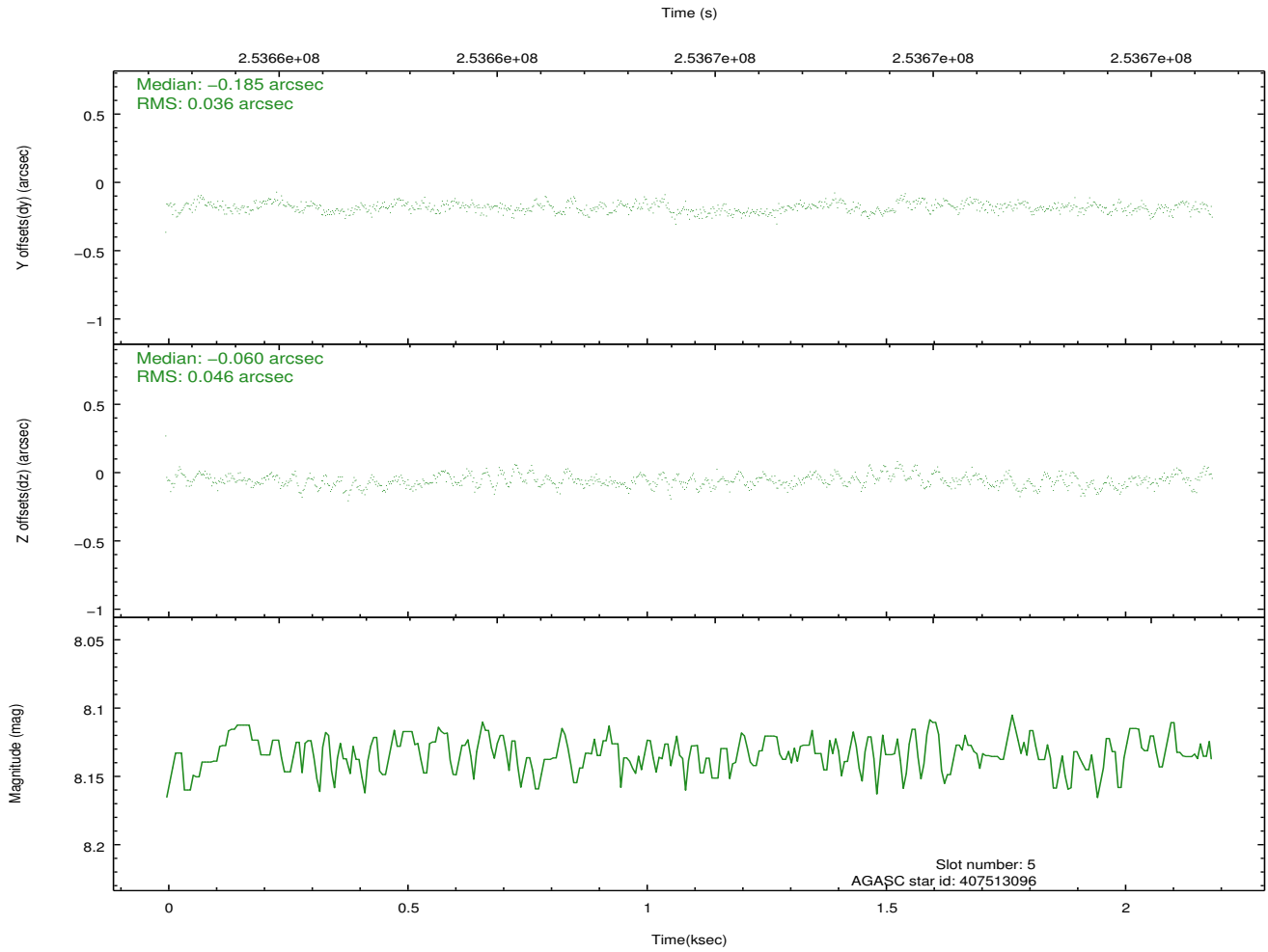
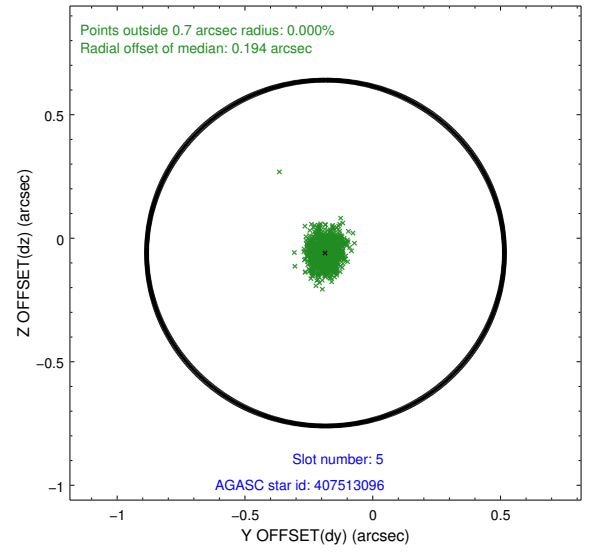
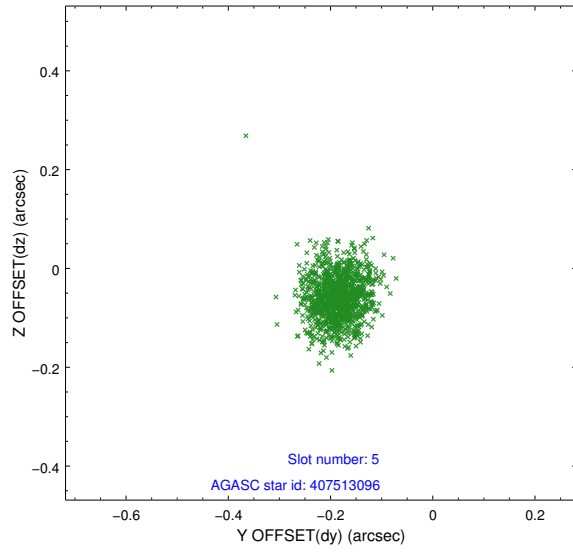
2.4.1 Slot 3



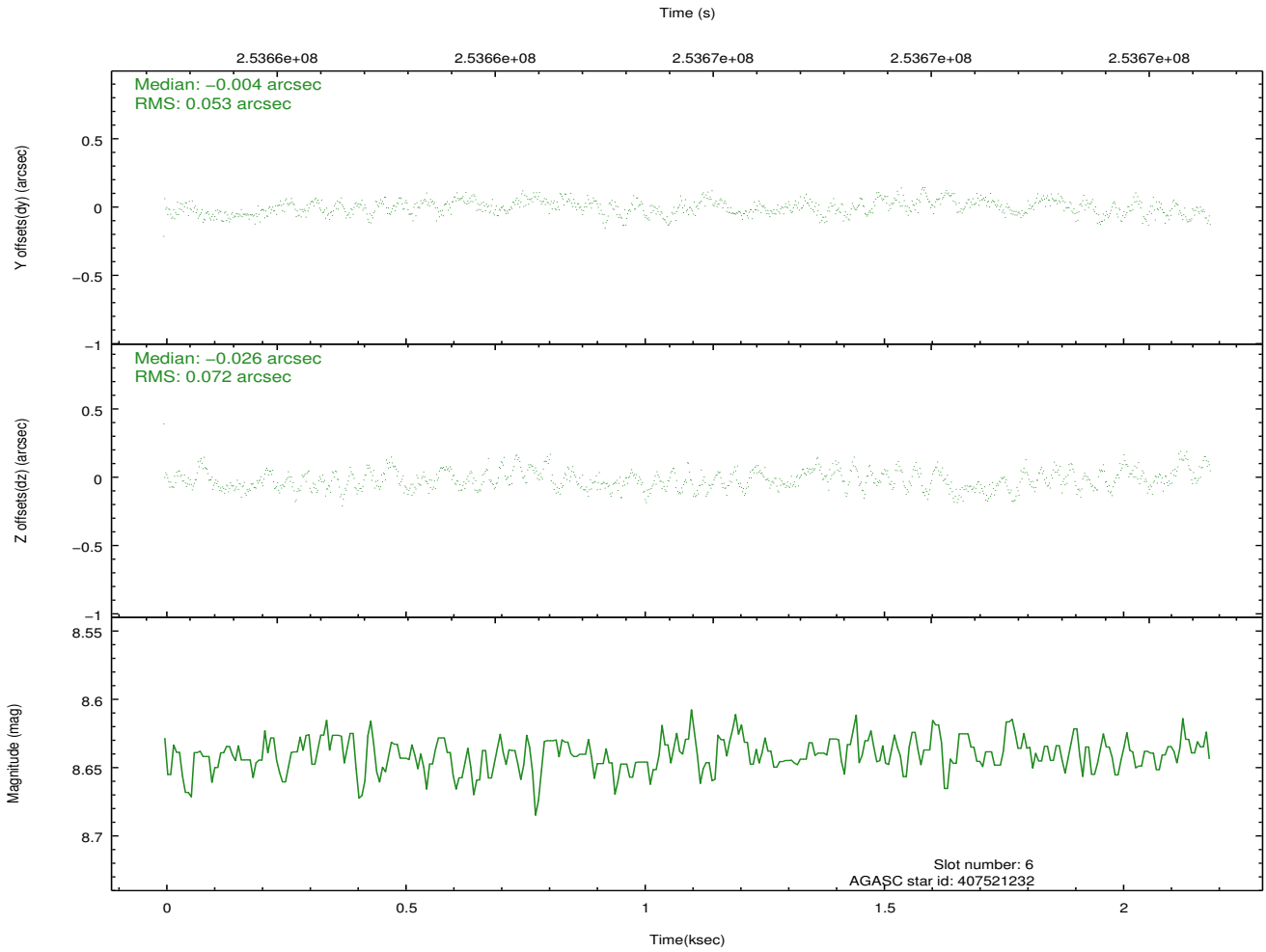
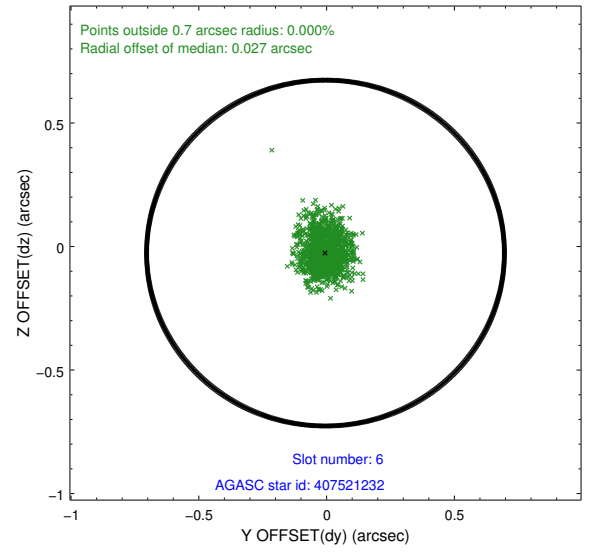
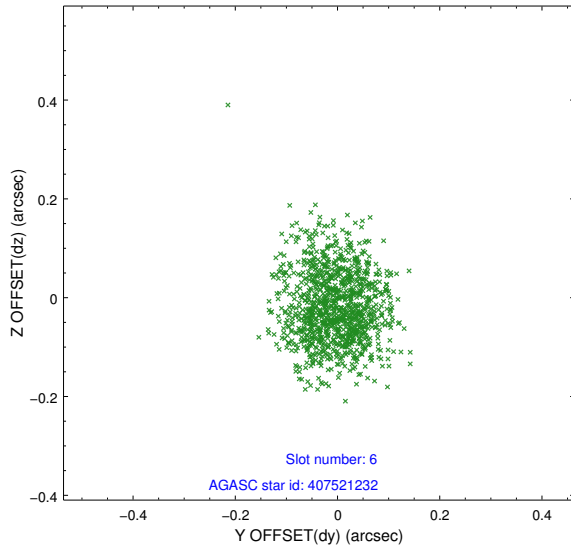
2.4.2 Slot 4



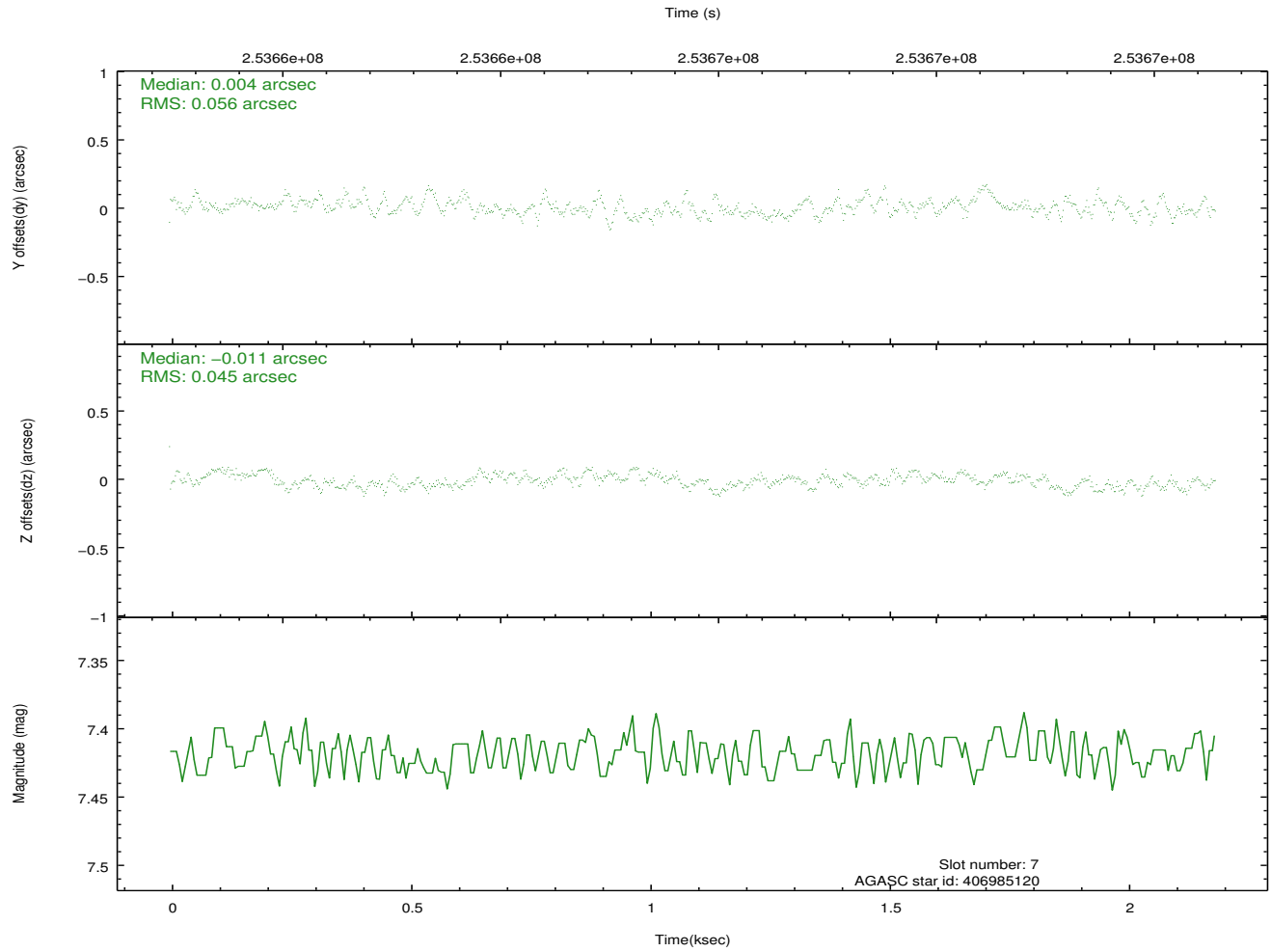
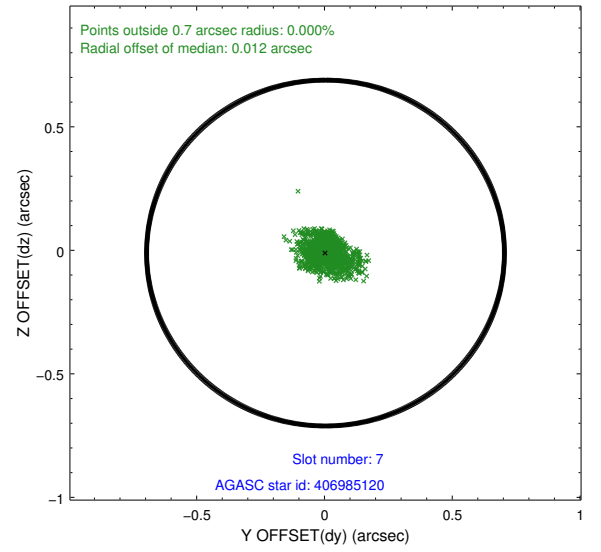
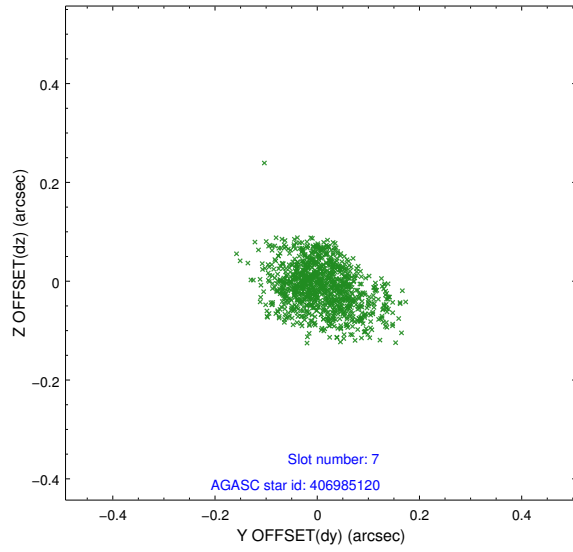
2.4.3 Slot 5



2.4.4 Slot 6

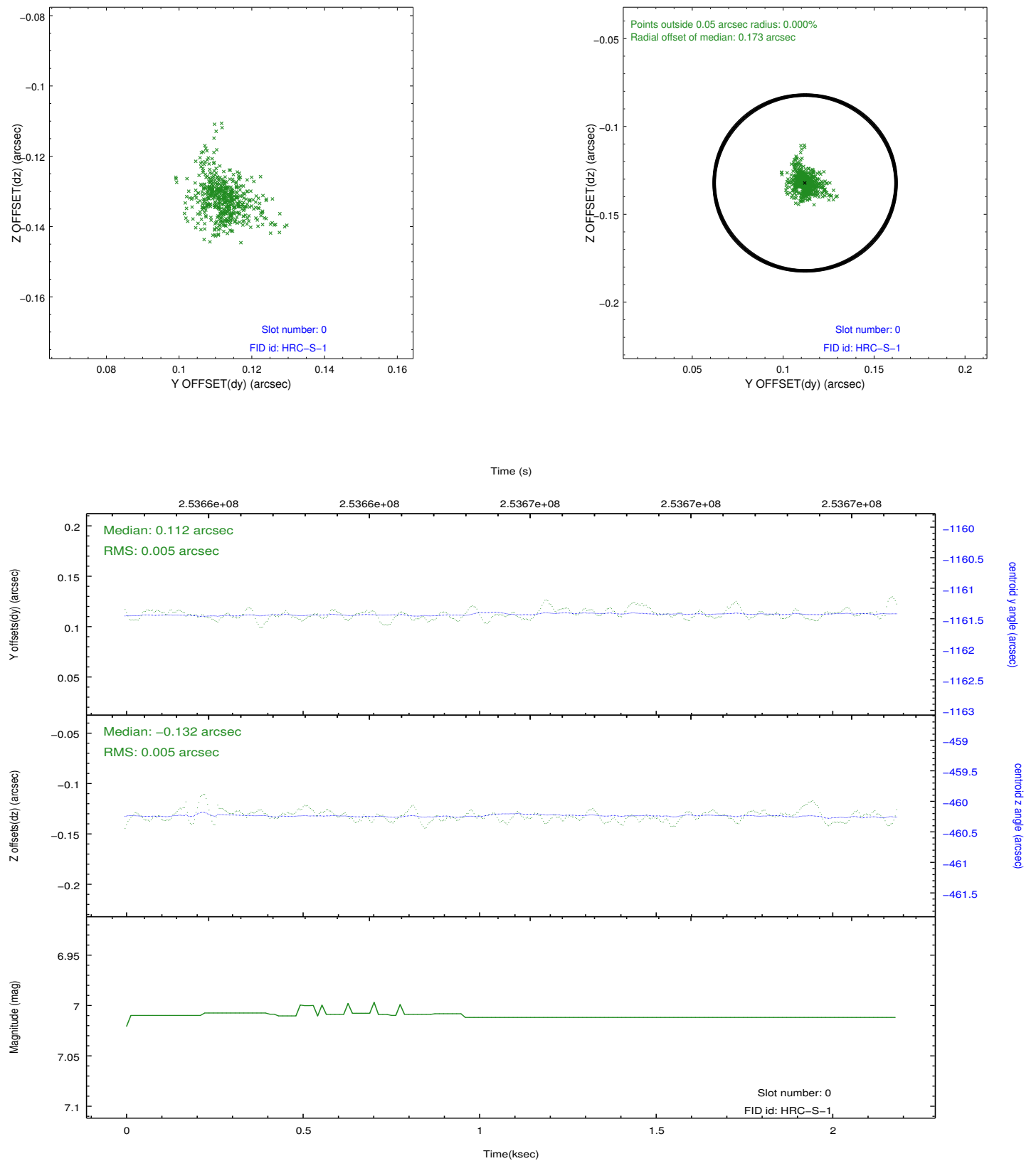


2.4.5 Slot 7

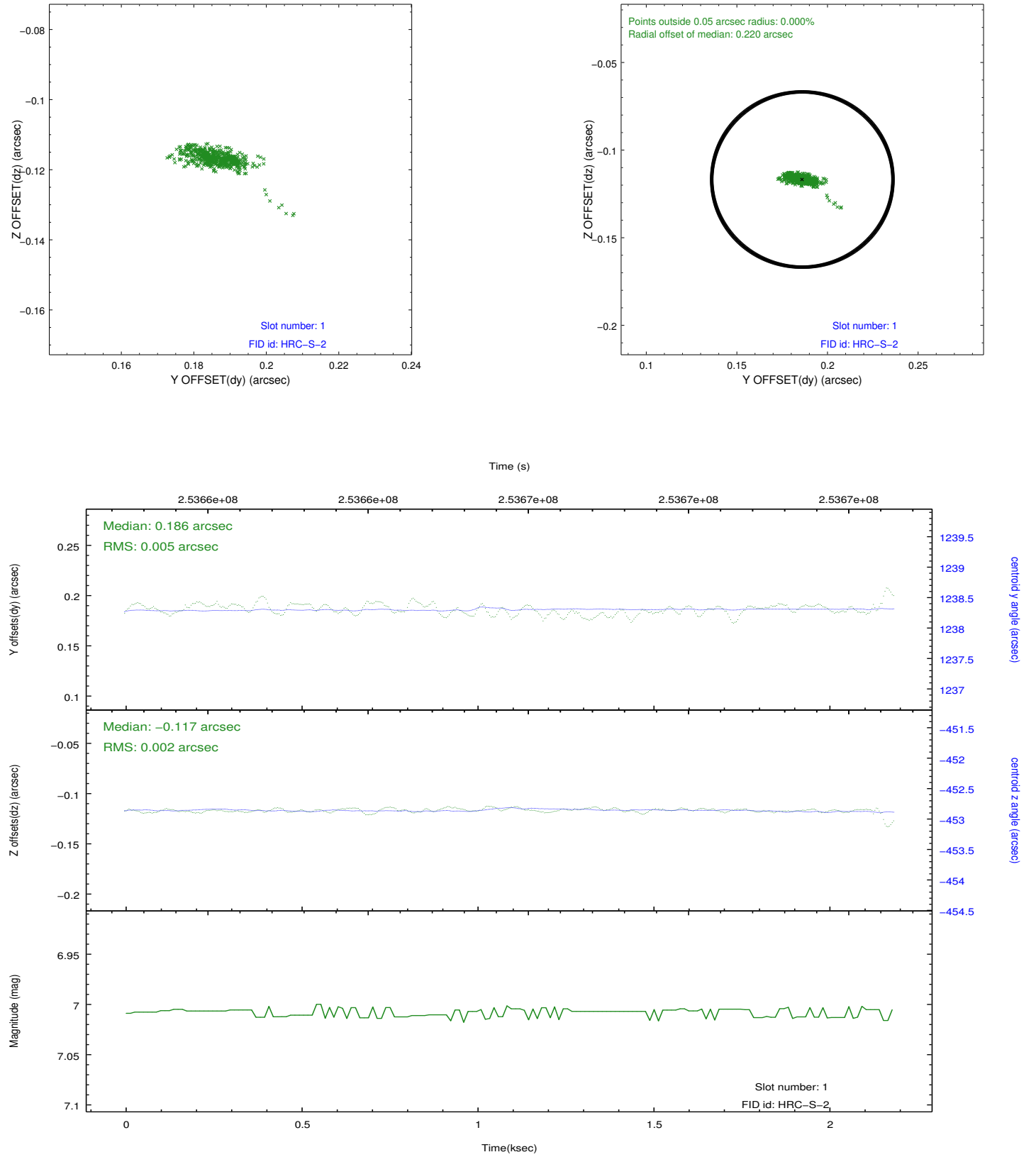


2.5 FID Slots

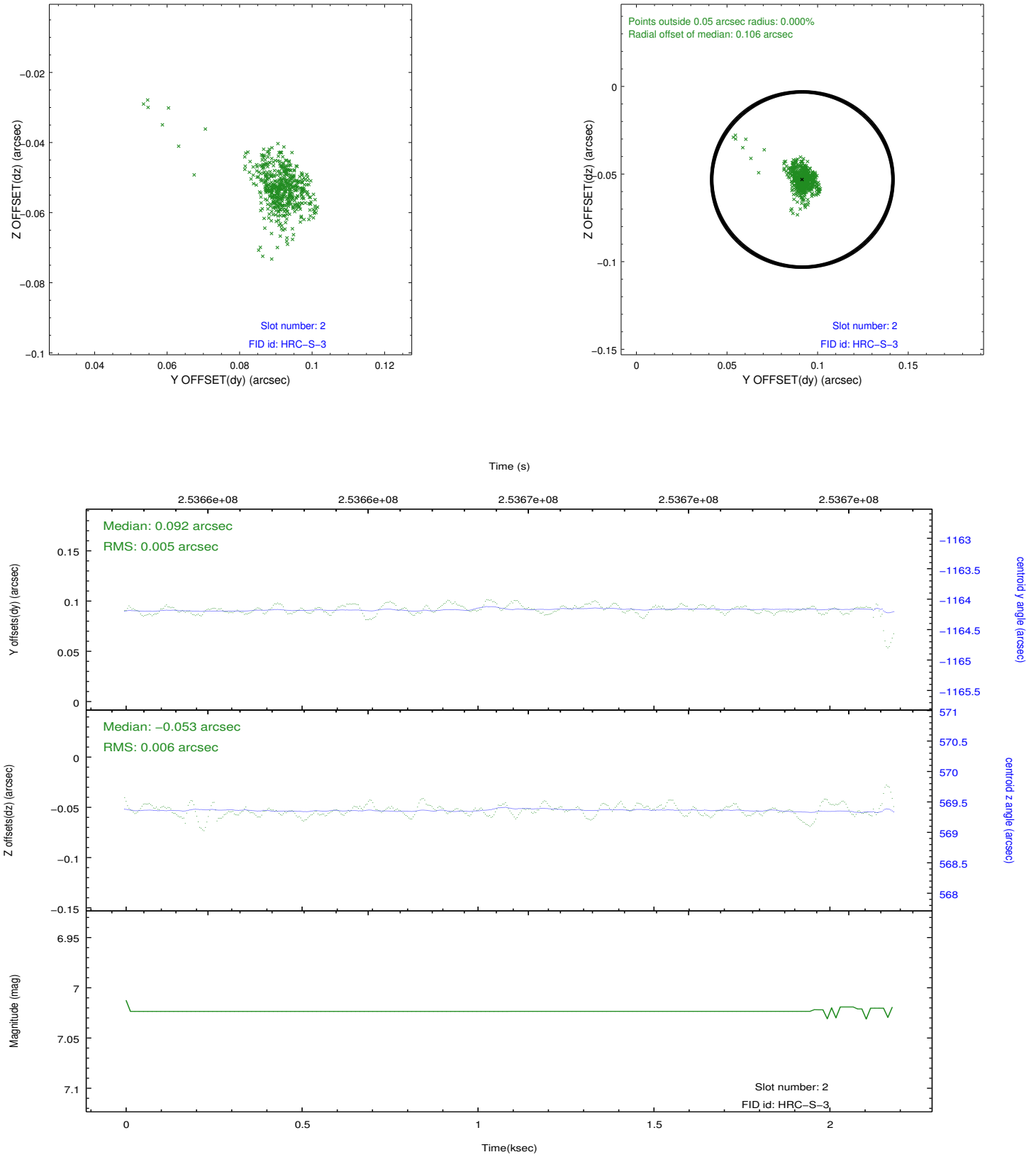
2.5.1 Slot 0



2.5.2 Slot 1



2.5.3 Slot 2



A Summary

A.1 Status

V&V Scientist	Jen Lauer
V&V Date (YYYY-MM-DD)	2012.08.12
V&V Edition	1
V&V Disposition and Status	OK
V&V Charge Time	2.18658135

A.2 Comments

Window constraint met.