

V&V Reference Report

L2 ASCDS Version : 8.5.1.1

Observation 6322 - L2 Version 3
Chandra X-Ray Center

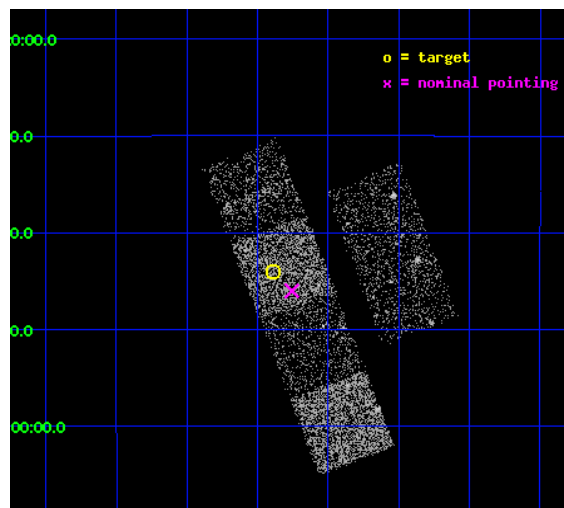
L2 Processing Date : Dec 25 2012

Contents

1	Front	2
2	OBI	3
2.1	OBI	3
2.1.1	Images	3
2.1.2	Bias	3
2.1.3	Parameters	4
2.1.4	Events	4
2.2	Compared Parameters	5
2.3	Aspect	6
2.4	Star Slots	9
2.4.1	Slot 3	9
2.4.2	Slot 4	10
2.4.3	Slot 5	11
2.4.4	Slot 6	12
2.4.5	Slot 7	13
2.5	FID Slots	14
2.5.1	Slot 0	14
2.5.2	Slot 1	15
2.5.3	Slot 2	16
A	Summary	17
A.1	Status	17
A.2	Comments	17

1 Front

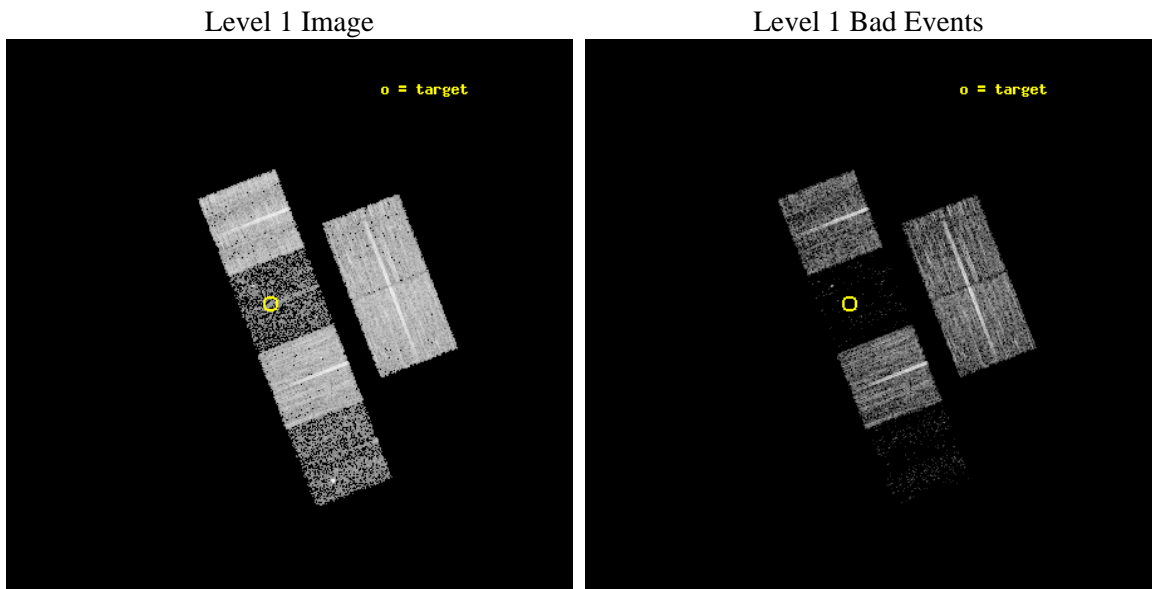
seq_num	100060	Sequence number
obs_id	6322	Observation id
title	Comet 9P/Tempel 1 During the Deep Impact Encounter	Proposal title
observer	Dr. Carey Lisse	Principal investigator
object	9P/Tempel 1	Source name
dtcycle	0	
cycle	P	events from which exps? Prim/Second/Both
ra_targ	204.597275	Observer's specified target RA [deg]
dec_targ	-9.733692	Observer's specified target Dec [deg]
ra_nom	204.56423313796	Nominal RA [deg]
dec_nom	-9.7669623556448	Nominal Dec [deg]
roll_nom	248.87168049959	Nominal Roll [deg]
revision	3	Processing version of data
ontime	7180.7999732494	Sum of GTIs [s]
livetime	7089.8723602295	Livetime [s]
ontime2	7180.7999732494	Sum of GTIs [s]
ontime3	7177.5590029657	Sum of GTIs [s]
ontime5	7180.7999732494	Sum of GTIs [s]
ontime6	7180.7999732494	Sum of GTIs [s]
ontime7	7180.7999732494	Sum of GTIs [s]
ontime8	7180.7999732494	Sum of GTIs [s]
l2events	10458	Number of level 2 events



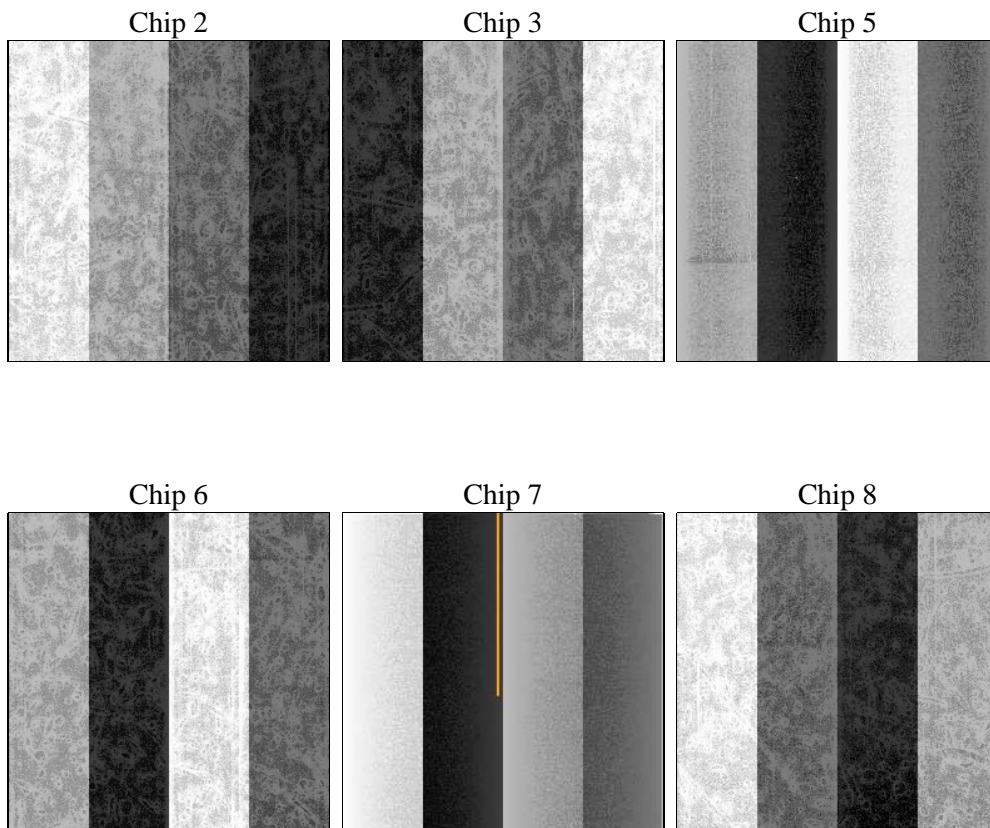
2 OBI

2.1 OBI

2.1.1 Images



2.1.2 Bias



2.1.3 Parameters

obi_num	0	Obi number	sched_exp_time	7000.000000	[s] Scheduled observation exposure time
ascdsver	8.5.1.1	Processing system revision	ontime	7180.7999732494	Sum of GTIs [s]
caldsver	4.5.5	 	ontime2	7180.7999732494	Sum of GTIs [s]
date	2012-12-25T21:21:47	Date and time of file creation	ontime3	7177.5590029657	Sum of GTIs [s]
revision	3	Processing version of data	ontime5	7180.7999732494	Sum of GTIs [s]
			ontime6	7180.7999732494	Sum of GTIs [s]
			ontime7	7180.7999732494	Sum of GTIs [s]
			ontime8	7180.7999732494	Sum of GTIs [s]
			l1events	154185	Number of level 1 events

2.1.4 Events

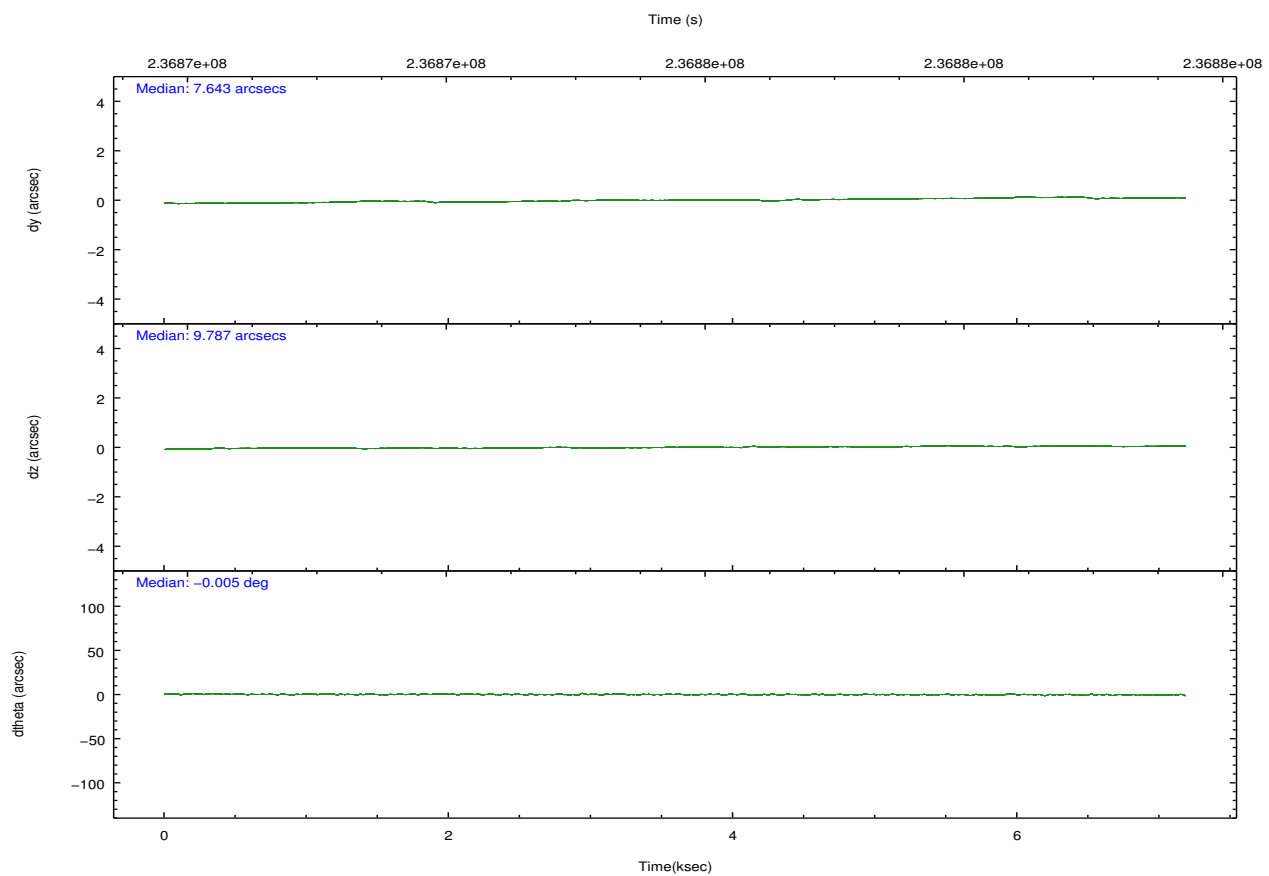
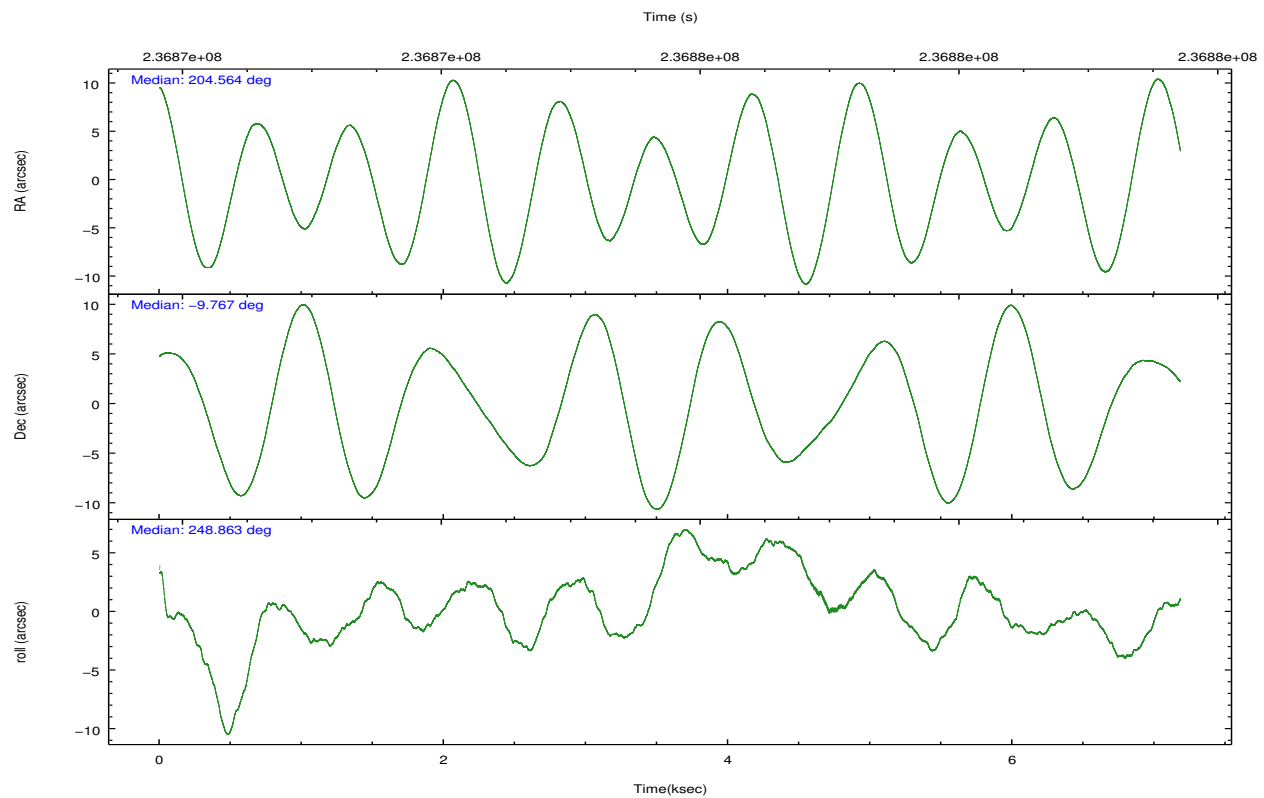
	ccd 2	ccd 3	ccd 5	ccd 6	ccd 7	ccd 8
level 1 events	37897	33597	6324	33549	4570	38248
rejected events	36254	32382	2030	32074	1104	28887
rejected %	95%	96%	32%	95%	24%	75%

	ccd 2	ccd 3	ccd 5	ccd 6	ccd 7	ccd 8
grade 0 events	733	603	1498	746	965	2570
	1%	1%	23%	2%	21%	6%
grade 1 events	12	14	40	6	21	38
	0%	0%	0%	0%	0%	0%
grade 2 events	390	167	1548	294	1187	2186
	1%	0%	24%	0%	25%	5%
grade 3 events	194	202	487	213	565	1124
	0%	0%	7%	0%	12%	2%
grade 4 events	231	192	464	198	464	1009
	0%	0%	7%	0%	10%	2%
grade 5 events	40	38	329	26	131	214
	0%	0%	5%	0%	2%	0%
grade 6 events	171	110	477	89	434	2791
	0%	0%	7%	0%	9%	7%
grade 7 events	36126	32271	1481	31977	803	28316
	95%	96%	23%	95%	17%	74%

2.2 Compared Parameters

Parameter	Planned	Actual	Parameter	Planned	Actual
Instrument	ACIS	ACIS	Obspar format version number	7	7
Detector	ACIS-235678	ACIS-235678	Obspar file type	PREDICTED	ACTUAL
Grating	NONE	NONE	Obspar update status	NONE	UPDATED
Data mode	VFAINT	VFAINT	Number of optional ACIS chips dropped	0	0
Observation mode	POINTING	POINTING	On-chip summing requested	N	N
[deg] Pointing RA	204.559557	204.5642331379606	Subarray requested	NONE	NONE
[deg] Pointing Dec	-9.740137	-9.76696235564483	Alternating exposures requested	N	N
[deg] Pointing Roll	248.714267	248.8716804995906	[s] Primary exposure time	0.000000	3.2
[mm] SIM focus pos	-0.684267	-0.6828225247311905			
[mm] SIM defocus	0	0.001444936568705701			
[mm] SIM translation stage pos	-190.132523	-190.145094680475			
[mm] SIM translation stage offset	0	0.01257209746719923			
[s] Observation start time (MET)	236872363.184000	236871987.59858			
Observation start date	2005-07-04T13:51:39	2005-07-04T13:46:27			
[s] Observation end time (MET)	236879363.184000	236879497.26142			
Observation end date	2005-07-04T15:48:19	2005-07-04T15:51:37			
Read mode	TIMED	TIMED			

2.3 Aspect

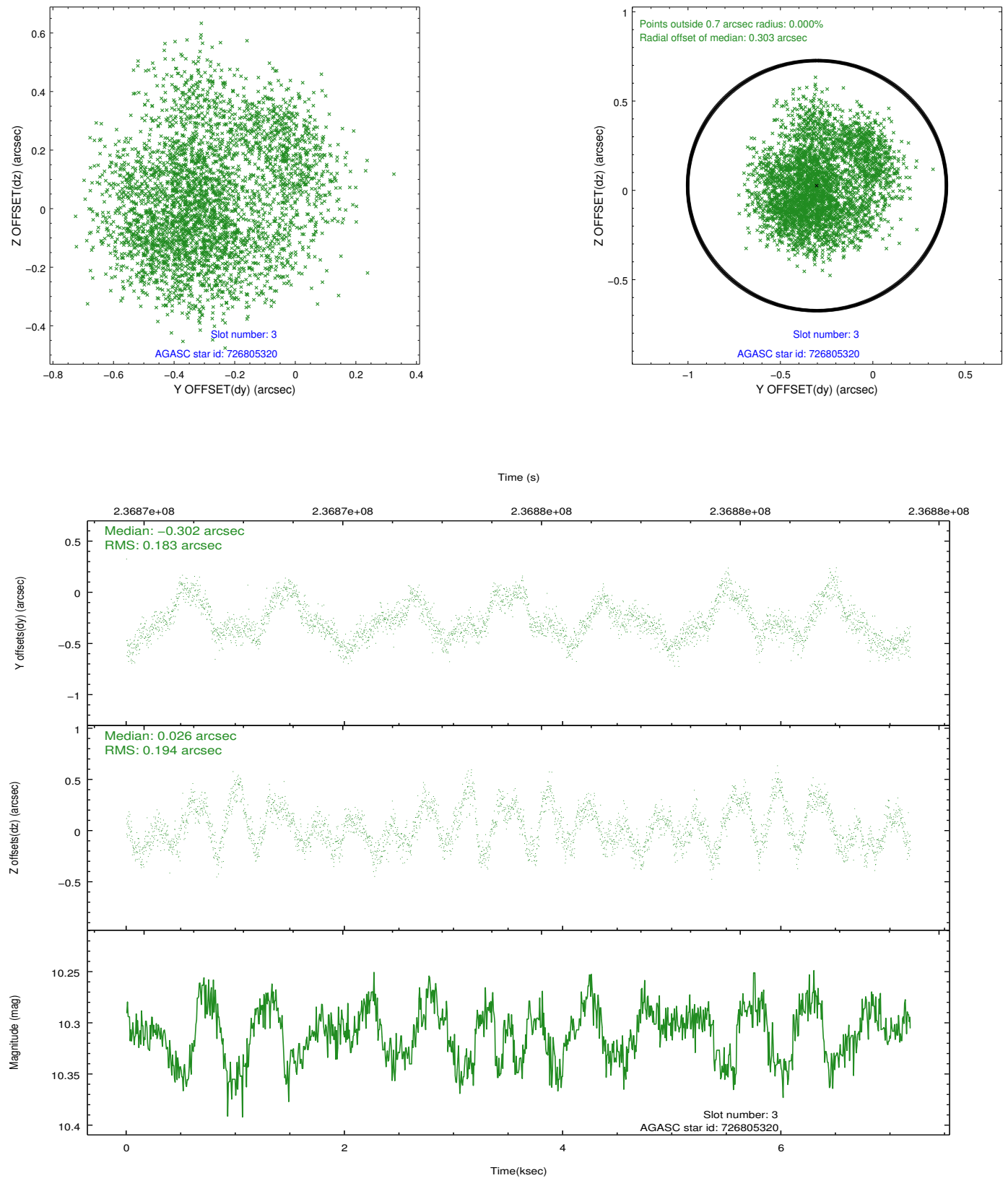


Slot Statistics

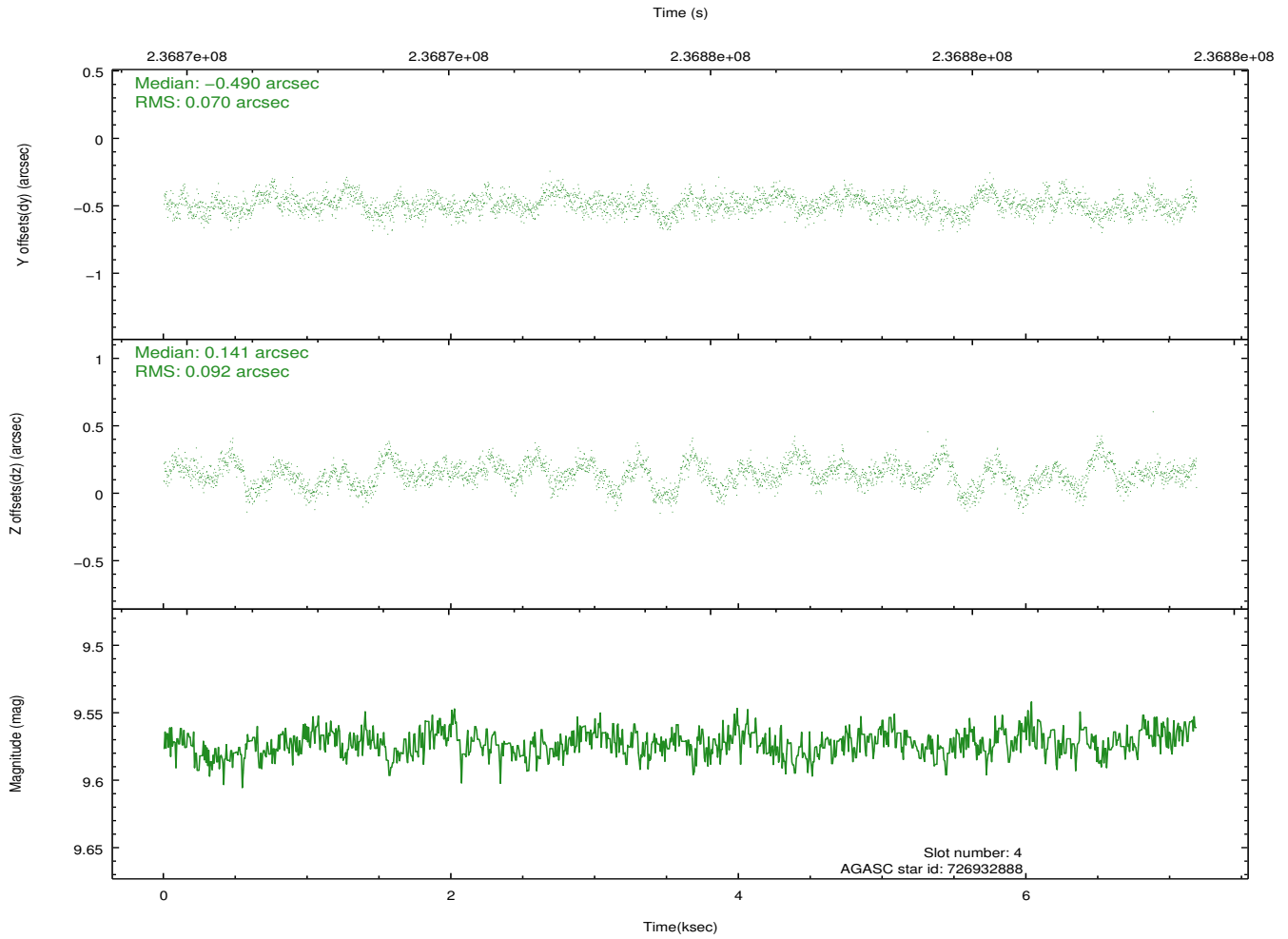
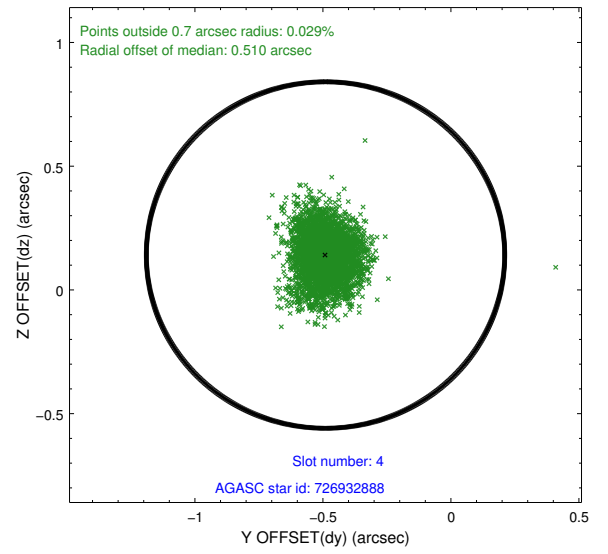
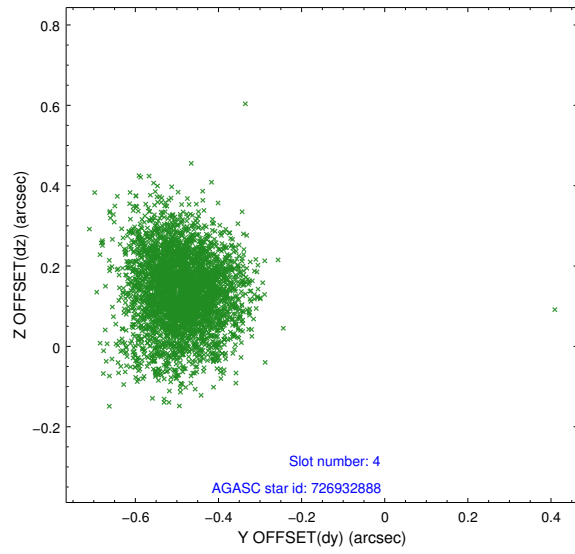
slot	status	id	mag	n_pts	med_dy	med_dz	dr1	dr2	ra	dec	mean_y	mean_z
0	FID	ACIS-S-2	7.10	1752	-0.035	-0.024	0.006	0.010	0.000000	0.000000	-760.41	-1730.96
1	FID	ACIS-S-4	7.20	1752	0.093	0.023	0.007	0.013	0.000000	0.000000	2152.60	176.80
2	FID	ACIS-S-5	7.23	1753	-0.090	0.010	0.007	0.013	0.000000	0.000000	-1812.32	171.29
3	GUIDE	726805320	10.31	3502	-0.302	0.026	0.300	0.427	204.212849	-9.734967	430.08	-1152.83
4	GUIDE	726932888	9.57	3499	-0.490	0.141	0.121	0.201	204.640397	-9.165404	-2031.99	-484.00
5	GUIDE	726935840	9.51	3503	0.694	-0.545	0.147	0.225	205.084608	-9.297514	-2160.34	1159.19
6	GUIDE	727320712	10.39	3501	0.155	0.065	0.273	0.417	204.468965	-10.254166	1840.74	373.39
7	GUIDE	727321032	9.99	3498	-0.044	0.324	0.162	0.255	205.073686	-10.196206	870.48	2294.36

2.4 Star Slots

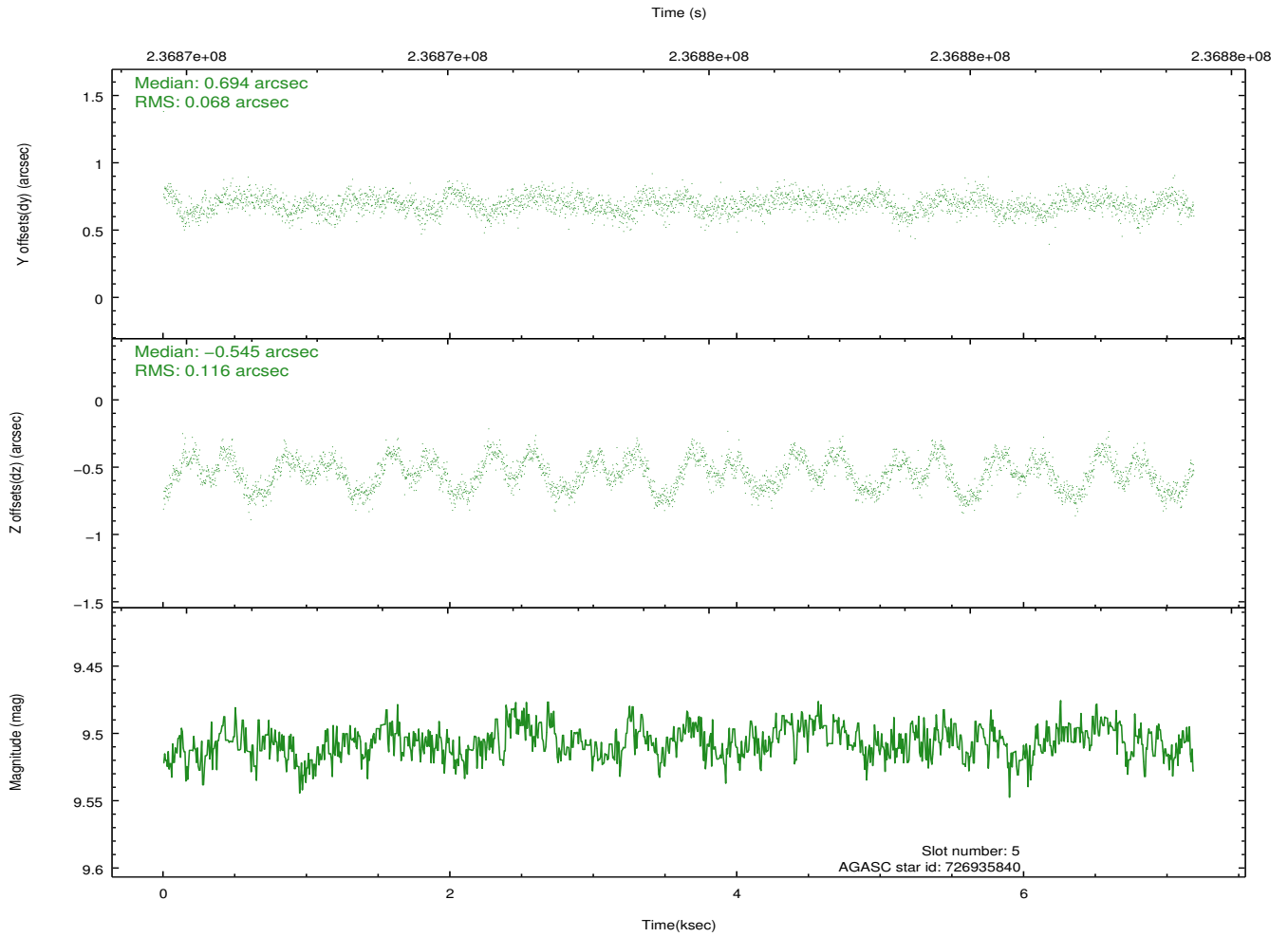
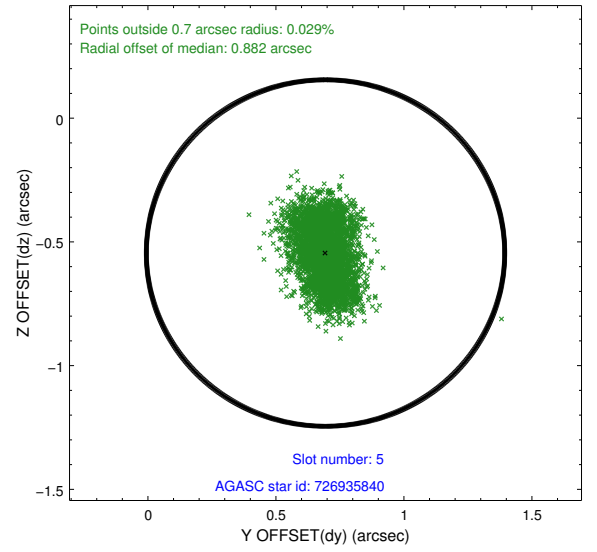
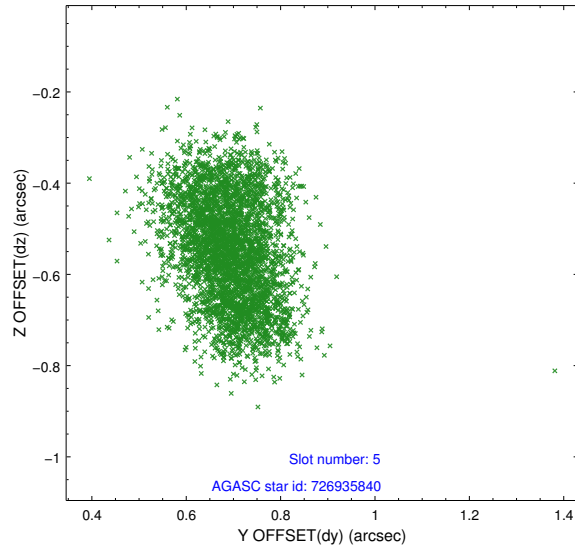
2.4.1 Slot 3



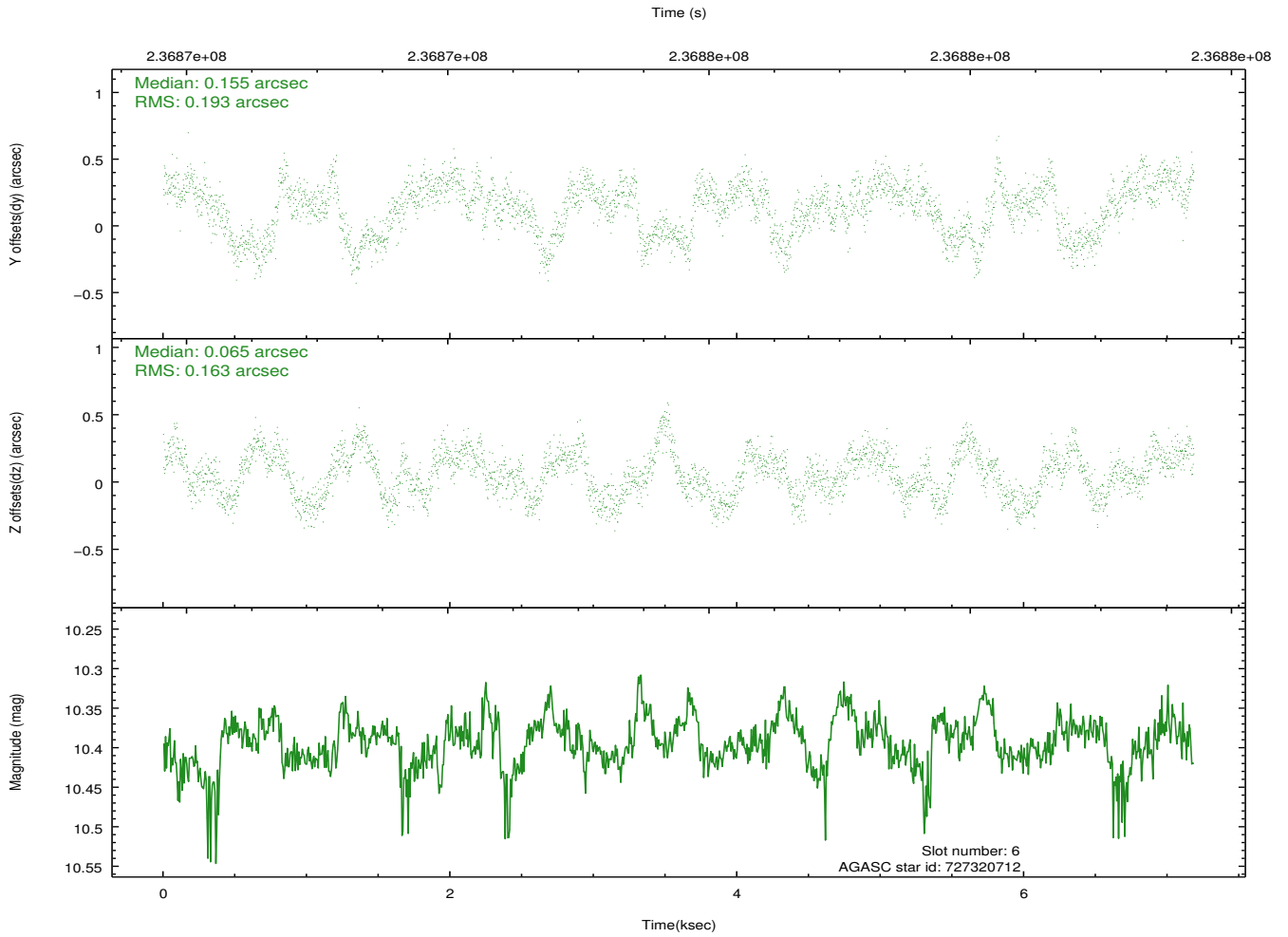
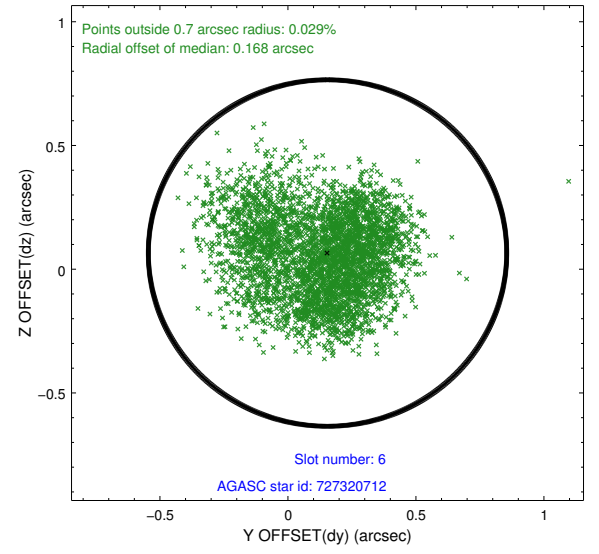
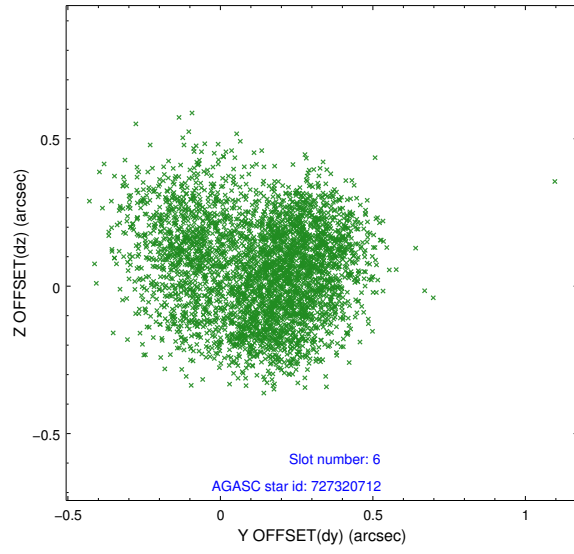
2.4.2 Slot 4



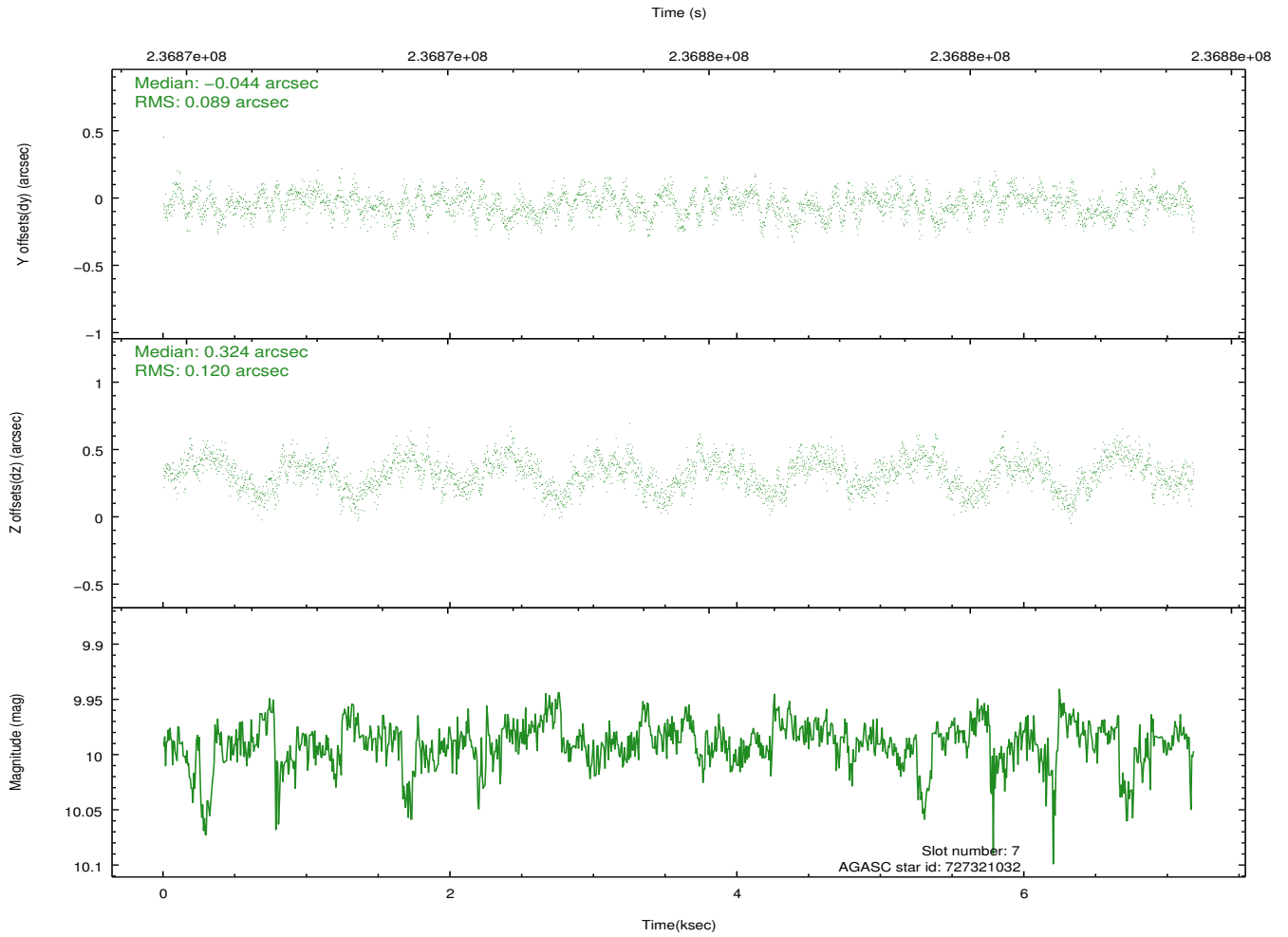
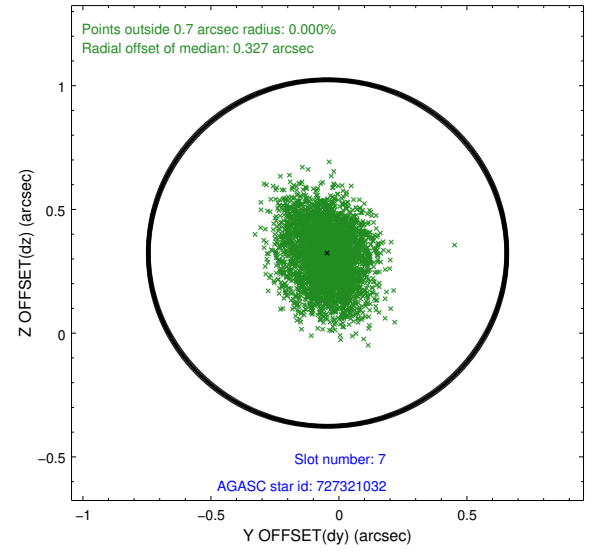
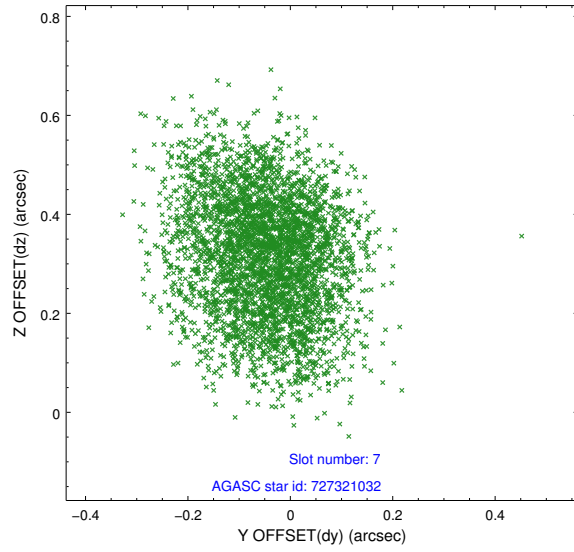
2.4.3 Slot 5



2.4.4 Slot 6

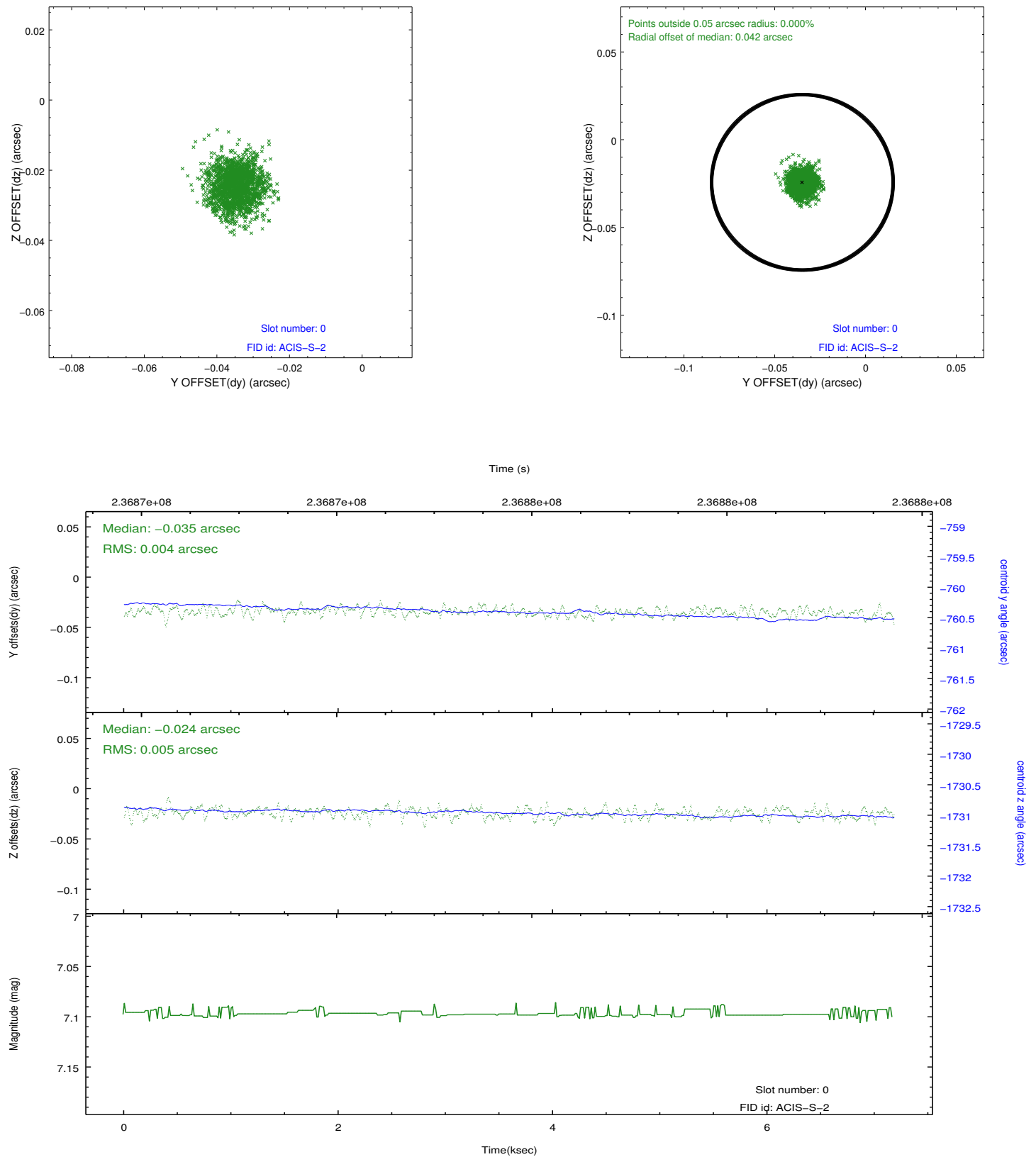


2.4.5 Slot 7

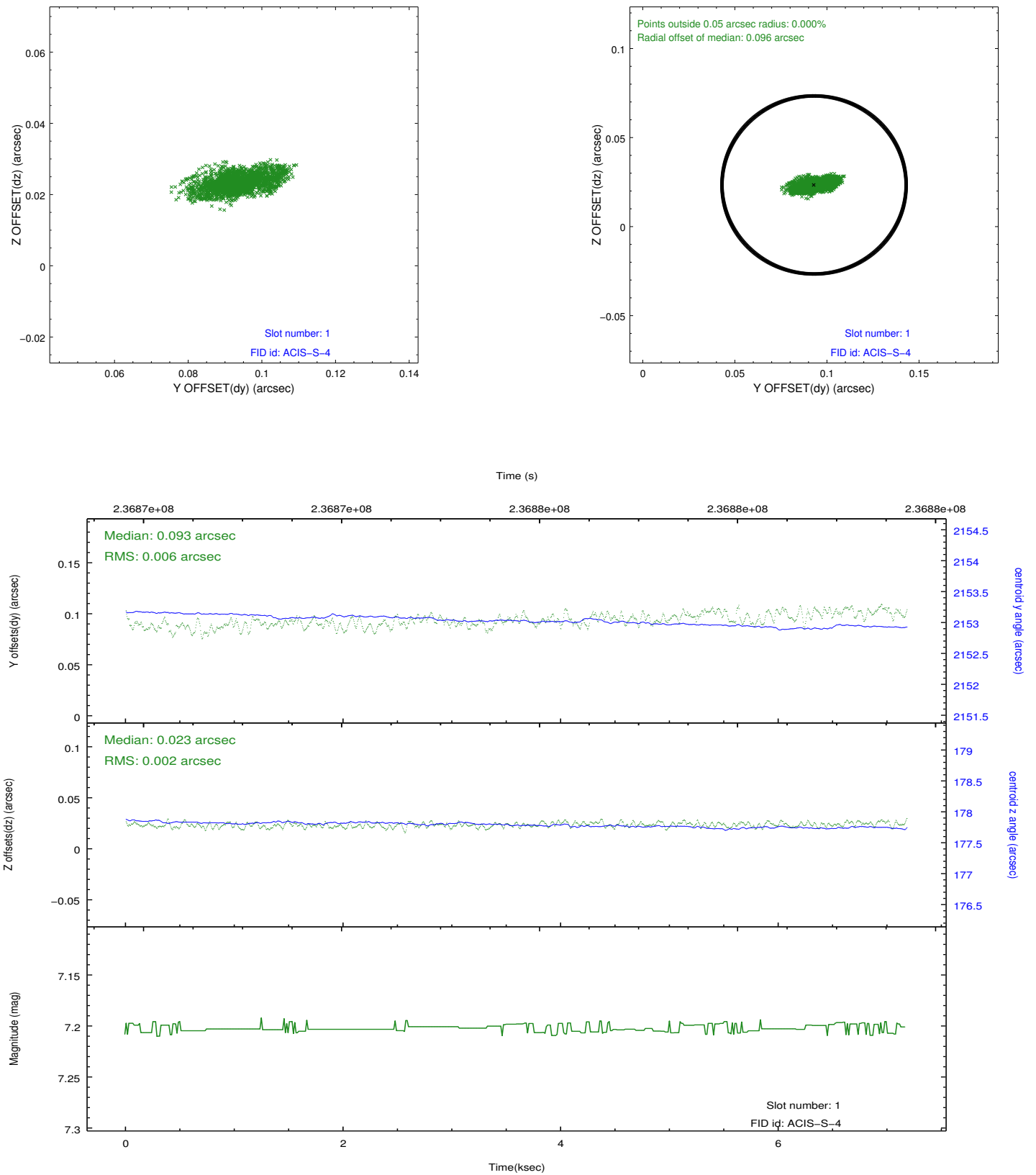


2.5 FID Slots

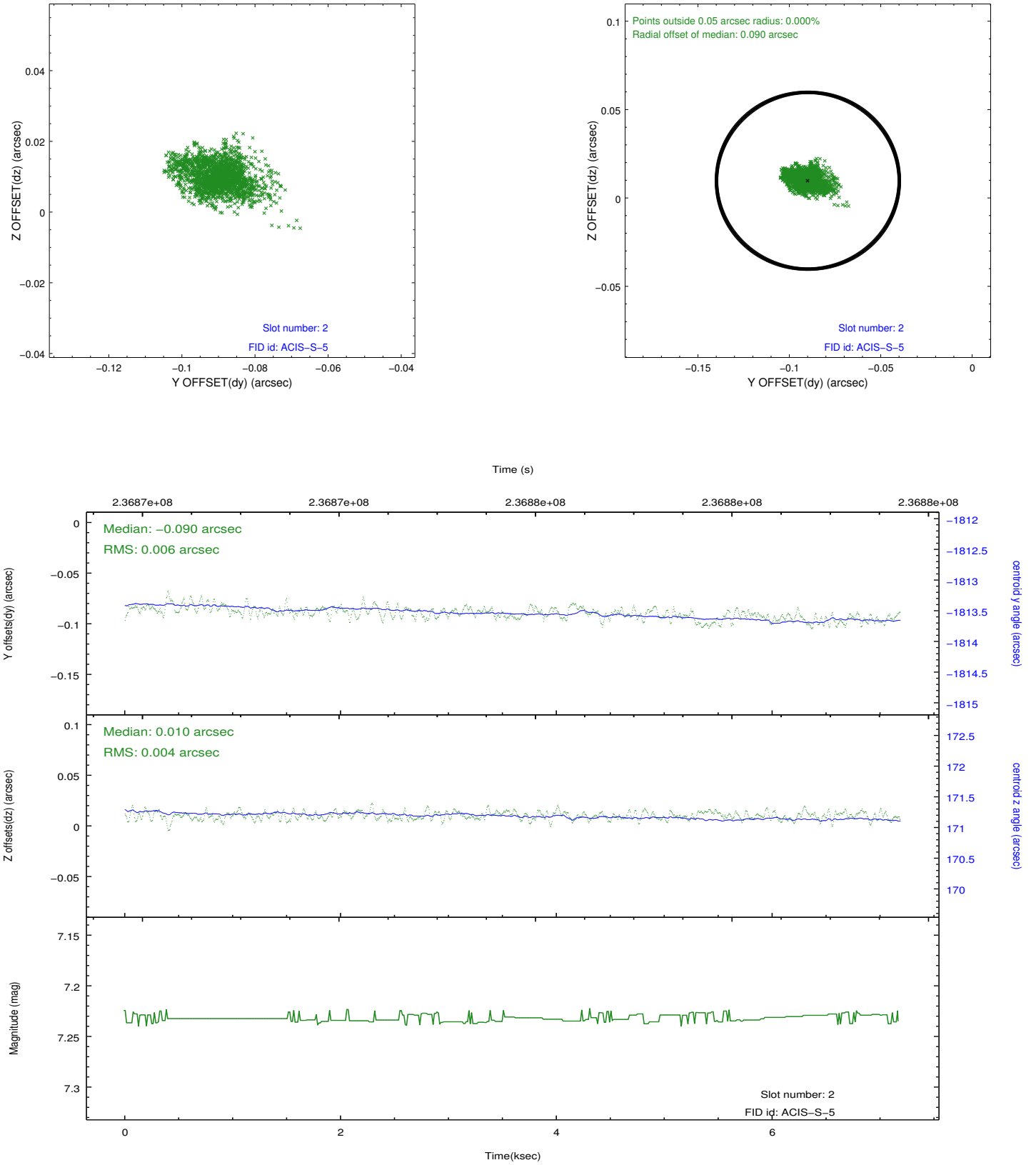
2.5.1 Slot 0



2.5.2 Slot 1



2.5.3 Slot 2



A Summary

A.1 Status

V&V Scientist	Jen Lauer
V&V Date (YYYY-MM-DD)	2013.01.17
V&V Edition	1
V&V Disposition and Status	OK
V&V Charge Time	7.180799

A.2 Comments

This is a moving target. Users will need to run `sso_freeze` or similar software to position the events in the reference frame of the target.