

V&V Reference Report

L2 ASCDS Version : 7.6.7.1

Observation 6322 - L2 Version 002
Chandra X-Ray Center

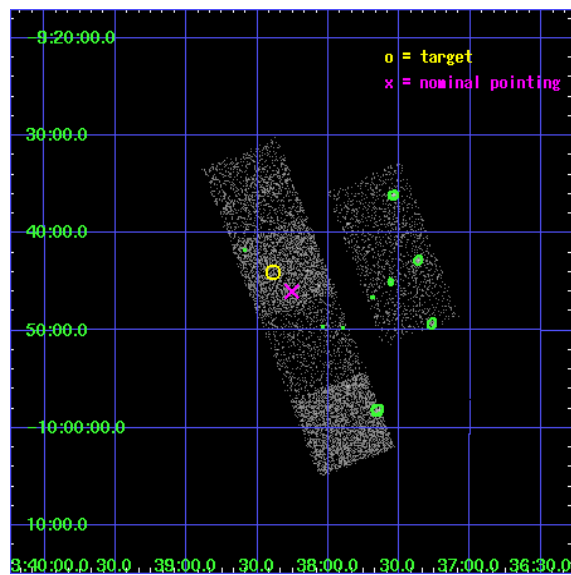
L2 Processing Date : Mar 11 2006

Contents

1	Front	2
2	OBI	3
2.1	OBI	3
2.1.1	Images	3
2.1.2	Bias	3
2.1.3	Parameters	4
2.1.4	Events	4
2.2	Compared Parameters	5
2.3	Aspect	6
2.4	Star Slots	9
2.4.1	Slot 3	9
2.4.2	Slot 4	10
2.4.3	Slot 5	11
2.4.4	Slot 6	12
2.4.5	Slot 7	13
2.5	FID Slots	14
2.5.1	Slot 0	14
2.5.2	Slot 1	15
2.5.3	Slot 2	16
3	Point Sources	17
A	Summary	18
A.1	Status	18
A.2	Comments	18

1 Front

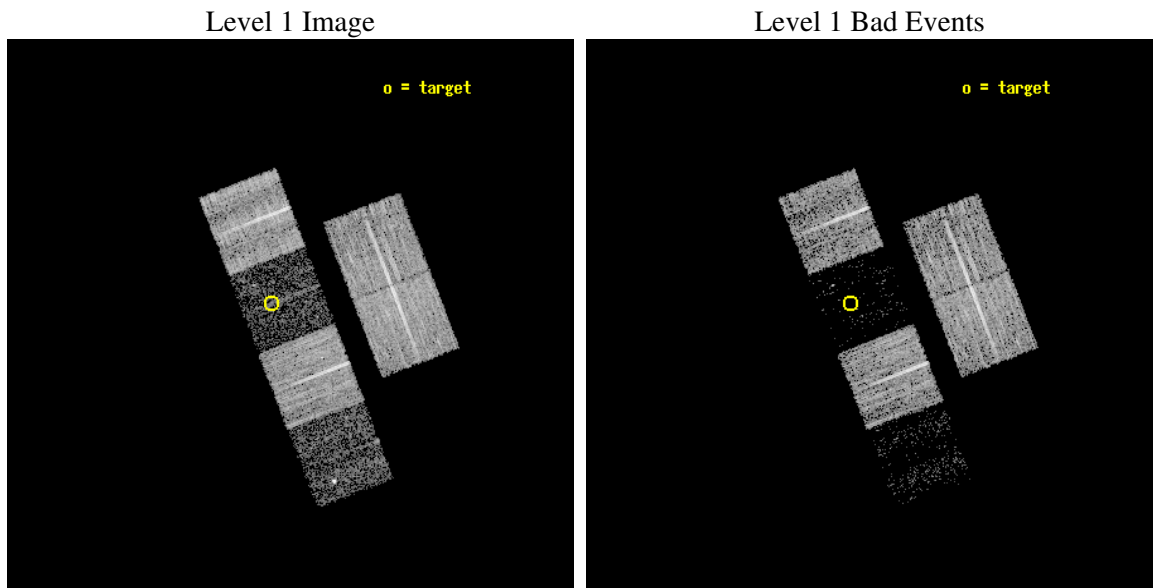
seq_num	100060
obs_id	6322
title	Comet 9P/Tempel 1 During the Deep Impact Encounter
observer	Dr. Carey Lisse
object	9P/Tempel 1
dtcycle	0
cycle	P
ra_targ	204.597275
dec_targ	-9.733692
ra_nom	204.56424336977
dec_nom	-9.7669364726818
roll_nom	248.87168222854
revision	2
ontime	7180.7999732494
livetime	7089.8723602295
ontime2	7180.7999732494
ontime3	7177.5590029657
ontime5	7180.7999732494
ontime6	7180.7999732494
ontime7	7180.7999732494
ontime8	7180.7999732494
l2events	10670



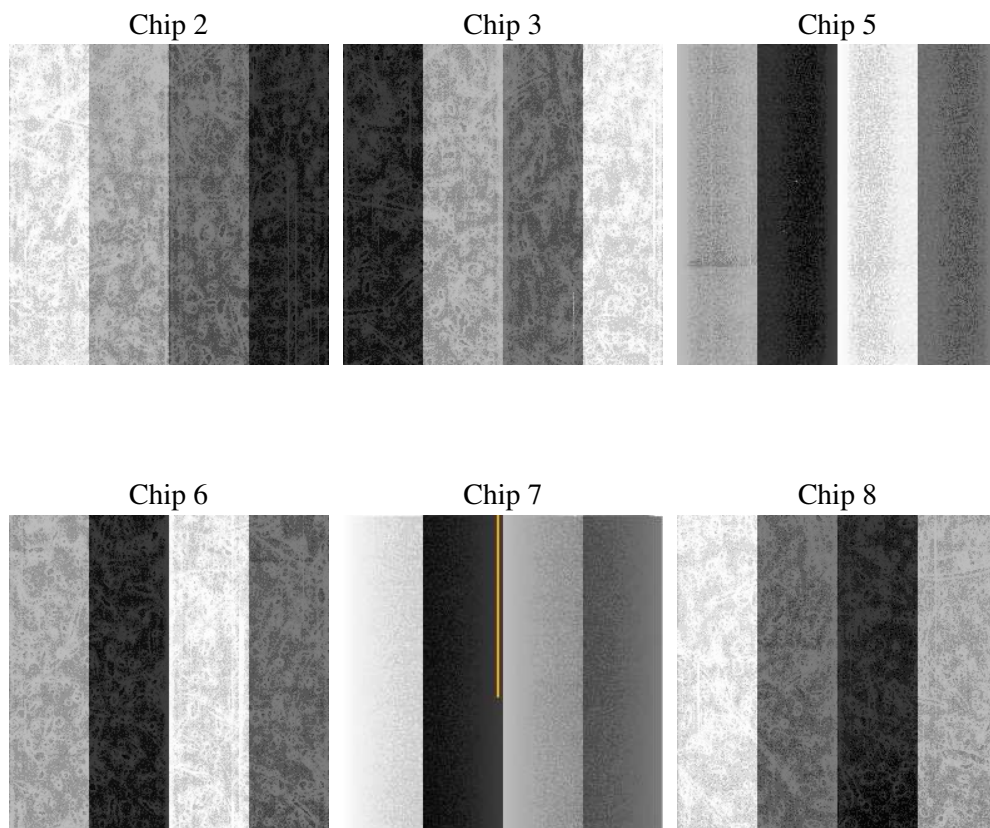
2 OBI

2.1 OBI

2.1.1 Images



2.1.2 Bias



2.1.3 Parameters

obi_num	0
ascdsver	7.6.7.1
caldsver	3.2.1
date	2006-03-12T03:37:08
revision	2

sched_exp_time	7000.000000
ontime	7509.4034432471
ontime2	7509.4034133255
ontime3	7506.1624729633
ontime5	7509.4034432471
ontime6	7509.4034432471
ontime7	7509.4034432471
ontime8	7509.4034133255
l1events	154185

2.1.4 Events

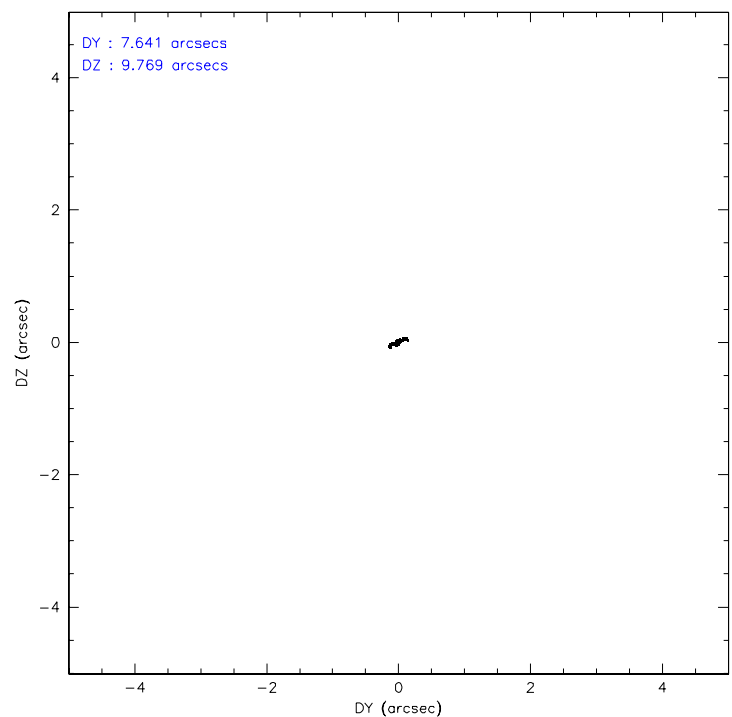
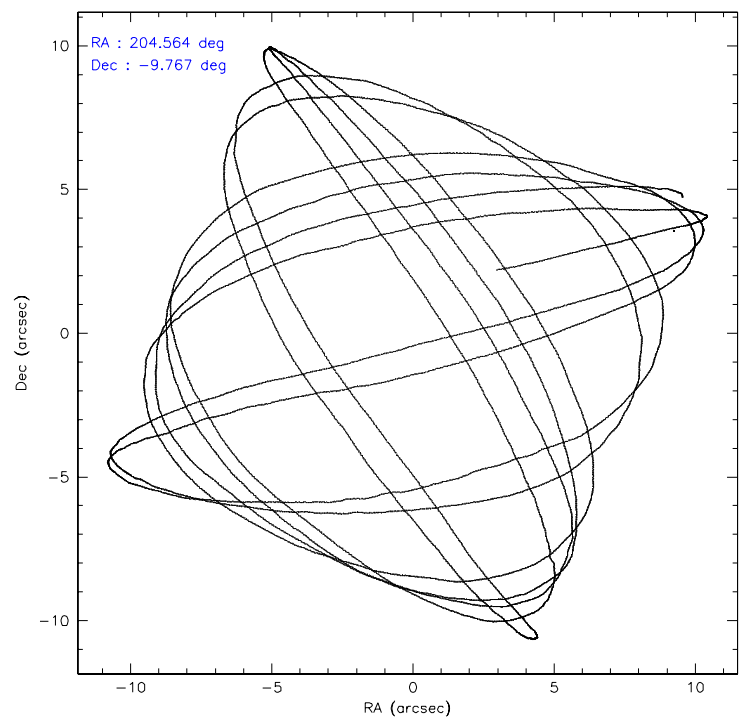
	ccd 2	ccd 3	ccd 5	ccd 6	ccd 7	ccd 8
level 1 events	37897	33597	6324	33549	4570	38248
rejected events	36254	32383	2086	32074	1131	28888
rejected %	95%	96%	32%	95%	24%	75%

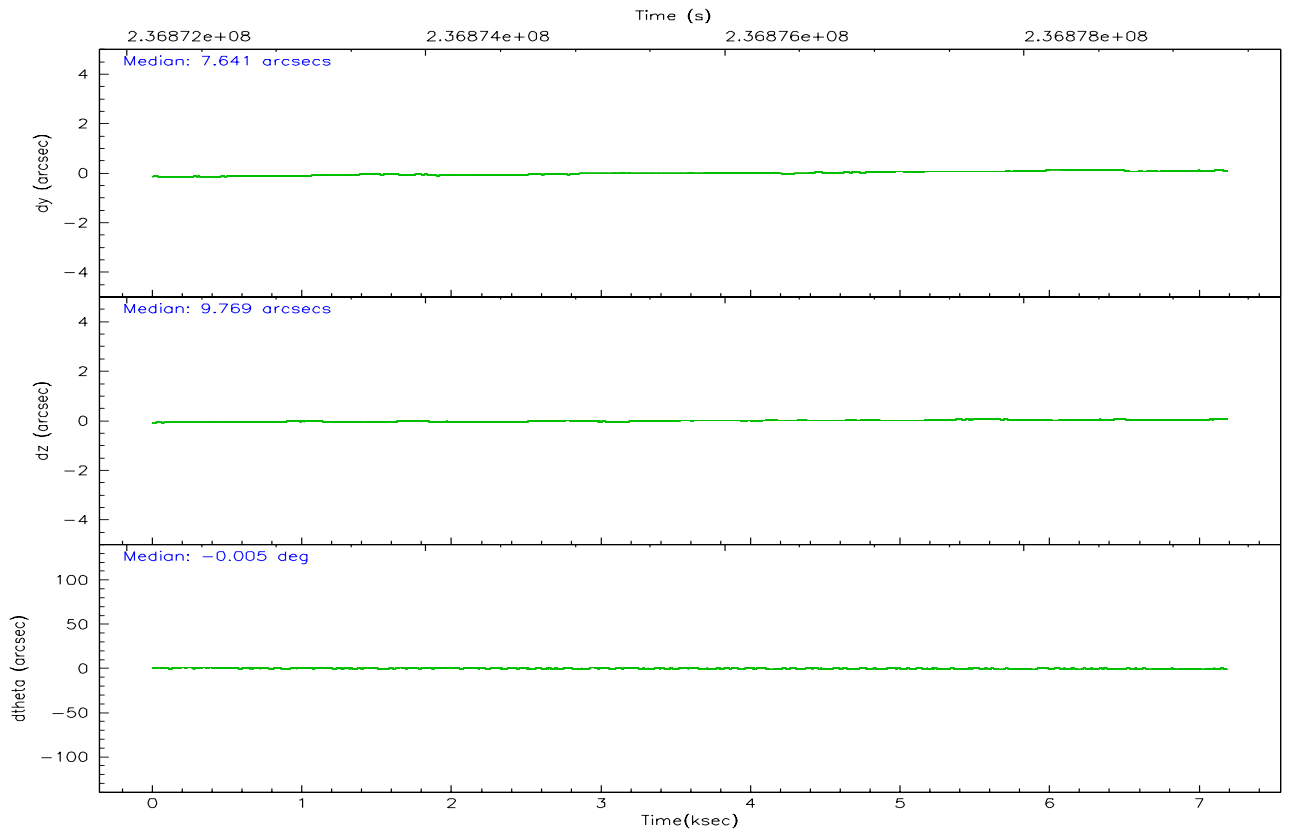
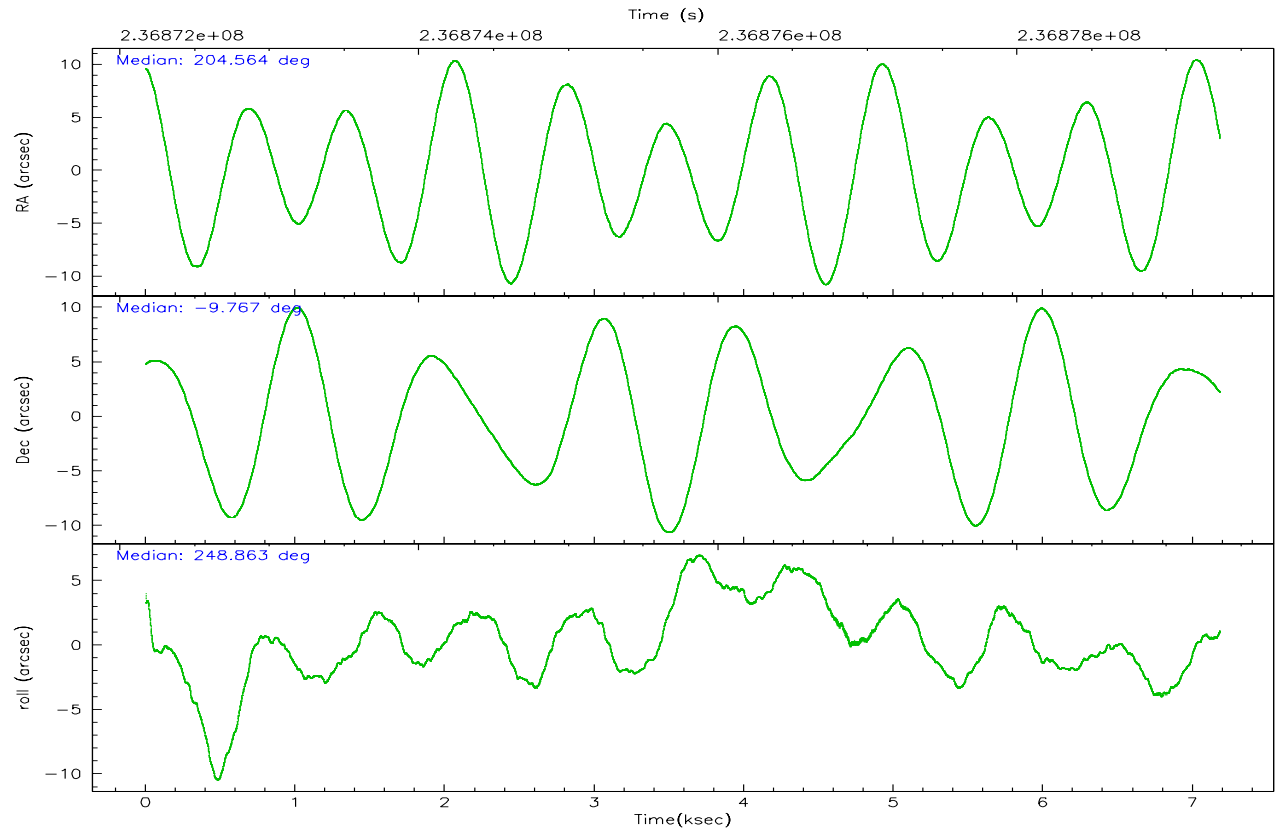
	ccd 2	ccd 3	ccd 5	ccd 6	ccd 7	ccd 8
grade 0 events	733	603	1304	746	860	2570
	1%	1%	20%	2%	18%	6%
grade 1 events	12	14	10	6	15	38
	0%	0%	0%	0%	0%	0%
grade 2 events	390	167	1685	294	1235	2186
	1%	0%	26%	0%	27%	5%
grade 3 events	194	202	472	213	560	1124
	0%	0%	7%	0%	12%	2%
grade 4 events	231	192	443	198	471	1009
	0%	0%	7%	0%	10%	2%
grade 5 events	40	38	296	26	127	214
	0%	0%	4%	0%	2%	0%
grade 6 events	171	110	516	89	461	2791
	0%	0%	8%	0%	10%	7%
grade 7 events	36126	32271	1598	31977	841	28316
	95%	96%	25%	95%	18%	74%

2.2 Compared Parameters

Parameter	Planned	Actual	Parameter	Planned	Actual
Instrument	ACIS	ACIS	Obspar format version number	6	6
Detector	ACIS-235678	ACIS-235678	Obspar file type	PREDICTED	ACTUAL
Grating	NONE	NONE	Obspar update status	NONE	UPDATED
Data mode	VFAINT	VFAINT	On-chip summing requested	N	N
Observation mode	POINTING	POINTING	Subarray requested	NONE	NONE
Pointing RA	204.559557	204.5642433697718	Alternating exposures requested	N	N
Pointing Dec	-9.740137	-9.766936472681842	Primary exposure time	0.000000	3.2
Pointing Roll	248.714267	248.8716822285398			
SIM focus pos (mm)	-0.684267	-0.6828225247311905			
SIM defocus (mm)	0	0.001444936568705701			
SIM translation stage pos (mm)	-190.132523	-190.145094680475			
SIM translation stage offset (mm)	0	0.01257209746719923			
Observation start time	236872363.184000	236871987.59858			
Observation start date	2005-07-04T13:51:39	2005-07-04T13:46:27			
Observation end time	236879363.184000	236879497.26142			
Observation end date	2005-07-04T15:48:19	2005-07-04T15:51:37			
Read mode	TIMED	TIMED			

2.3 Aspect



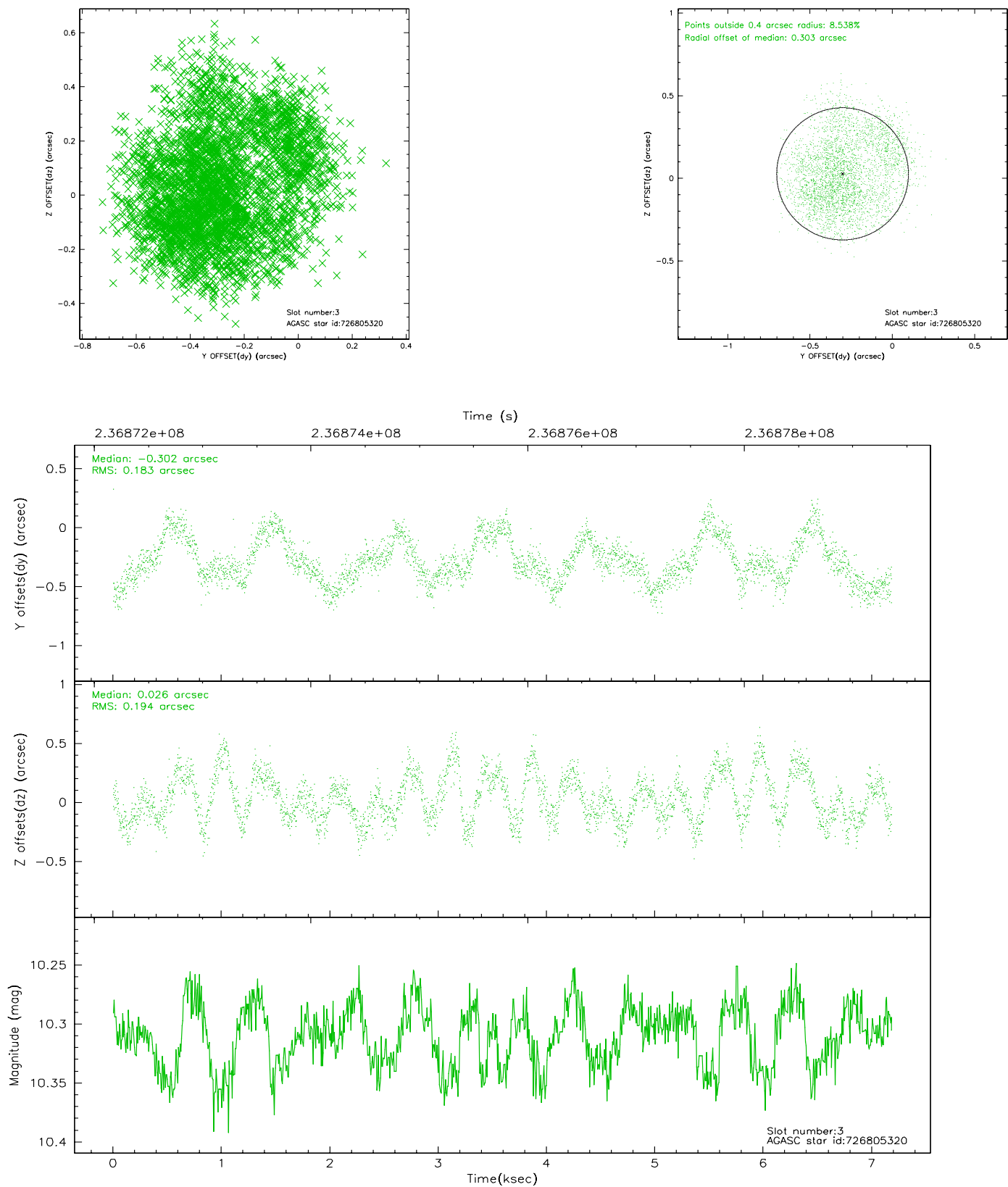


Slot Statistics

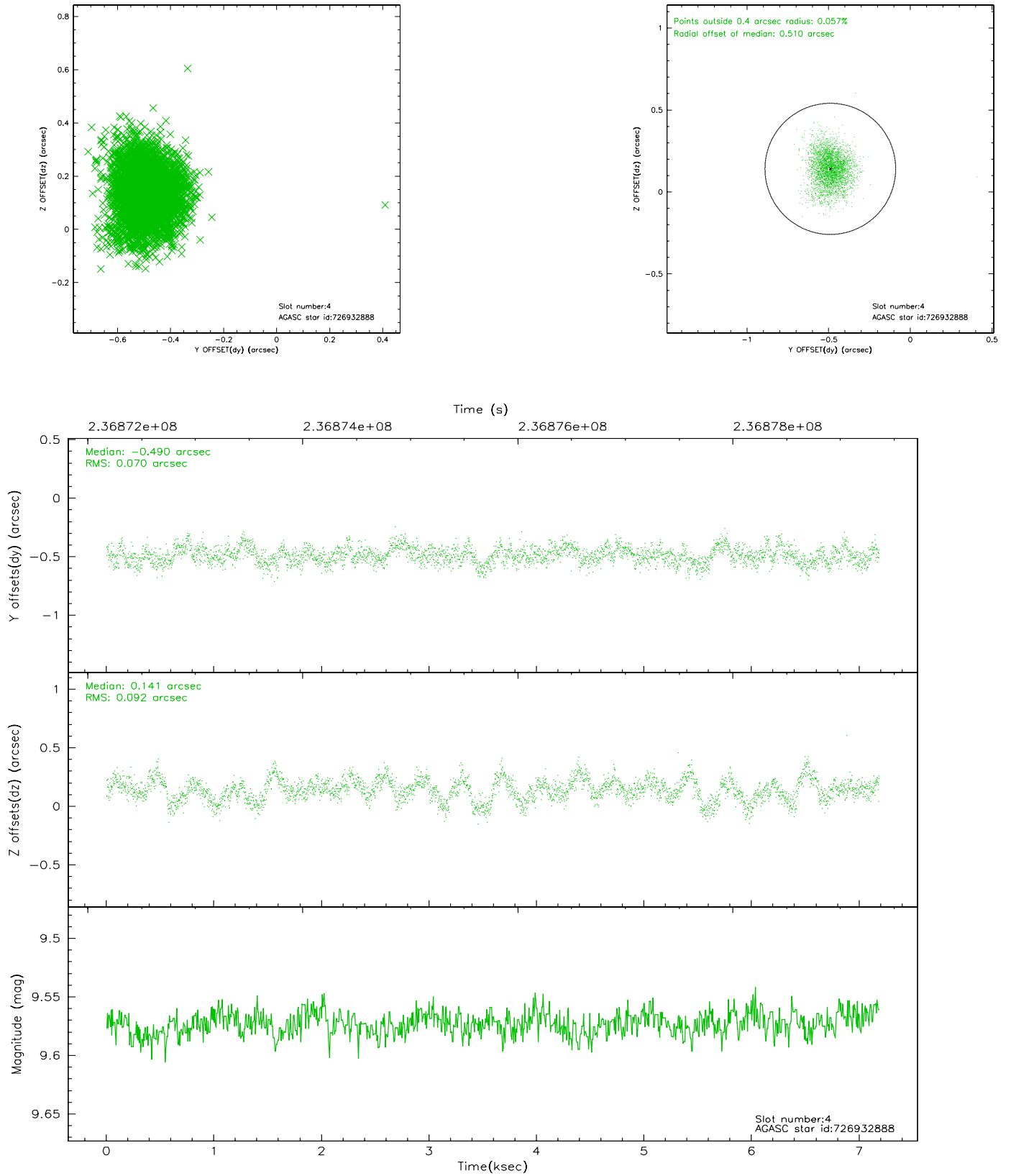
slot	status	id	mag	n_pts	med_dy	med_dz	dr1	dr2	ra	dec	mean_y	mean_z
0	FID	ACIS-S-2	7.10	1752	-0.023	-0.001	0.006	0.010	0.000000	0.000000	-760.39	-1730.92
1	FID	ACIS-S-4	7.20	1752	0.051	0.012	0.006	0.011	0.000000	0.000000	2152.56	176.81
2	FID	ACIS-S-5	7.23	1753	-0.059	-0.002	0.007	0.011	0.000000	0.000000	-1812.28	171.29
3	GUIDE	726805320	10.31	3502	-0.302	0.026	0.300	0.427	204.212849	-9.734967	430.08	-1152.83
4	GUIDE	726932888	9.57	3499	-0.490	0.141	0.121	0.201	204.640397	-9.165404	-2031.99	-484.00
5	GUIDE	726935840	9.51	3503	0.694	-0.545	0.147	0.225	205.084608	-9.297514	-2160.34	1159.19
6	GUIDE	727320712	10.39	3501	0.155	0.065	0.273	0.417	204.468965	-10.254166	1840.74	373.39
7	GUIDE	727321032	9.99	3498	-0.044	0.324	0.162	0.255	205.073686	-10.196206	870.48	2294.36

2.4 Star Slots

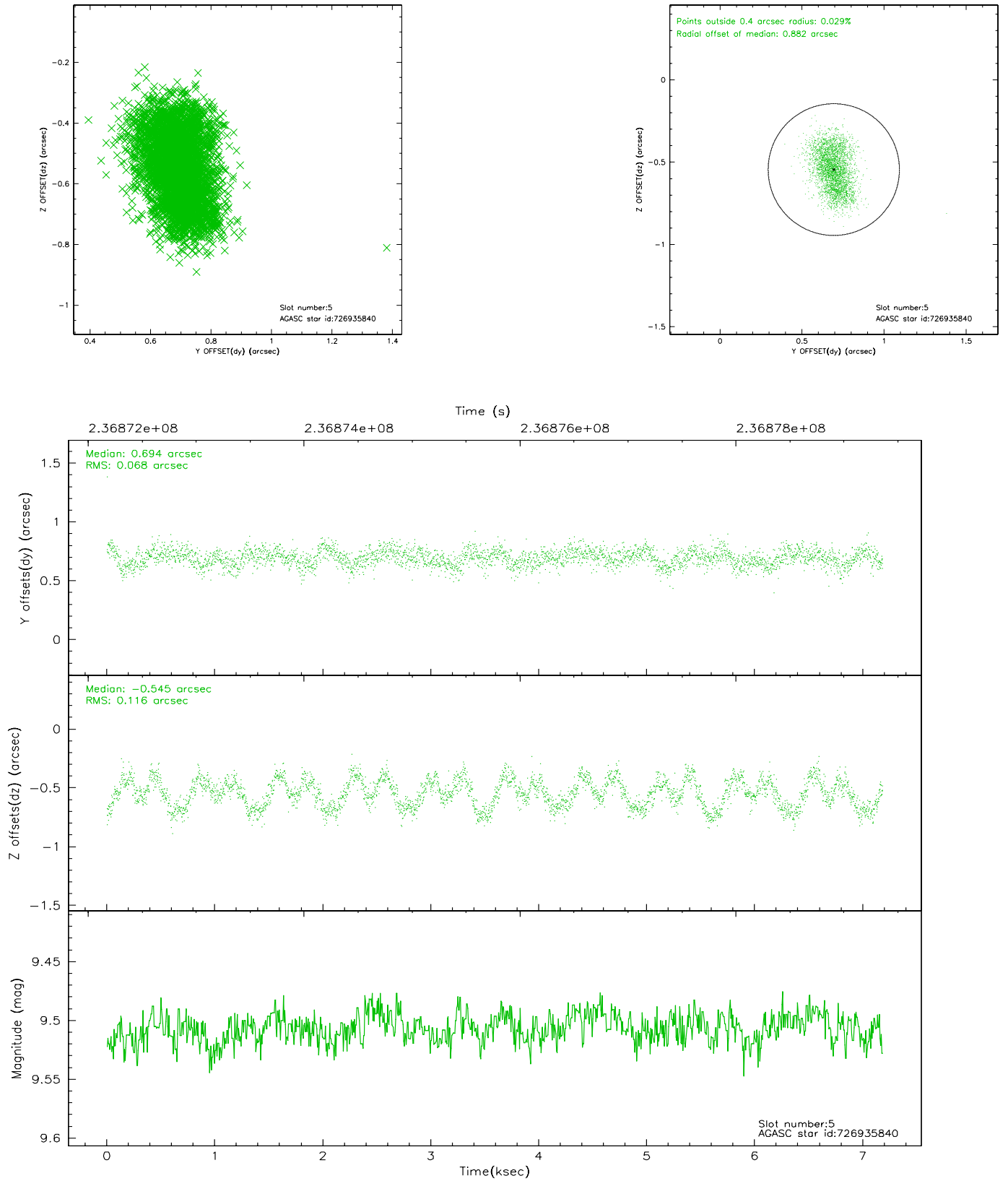
2.4.1 Slot 3



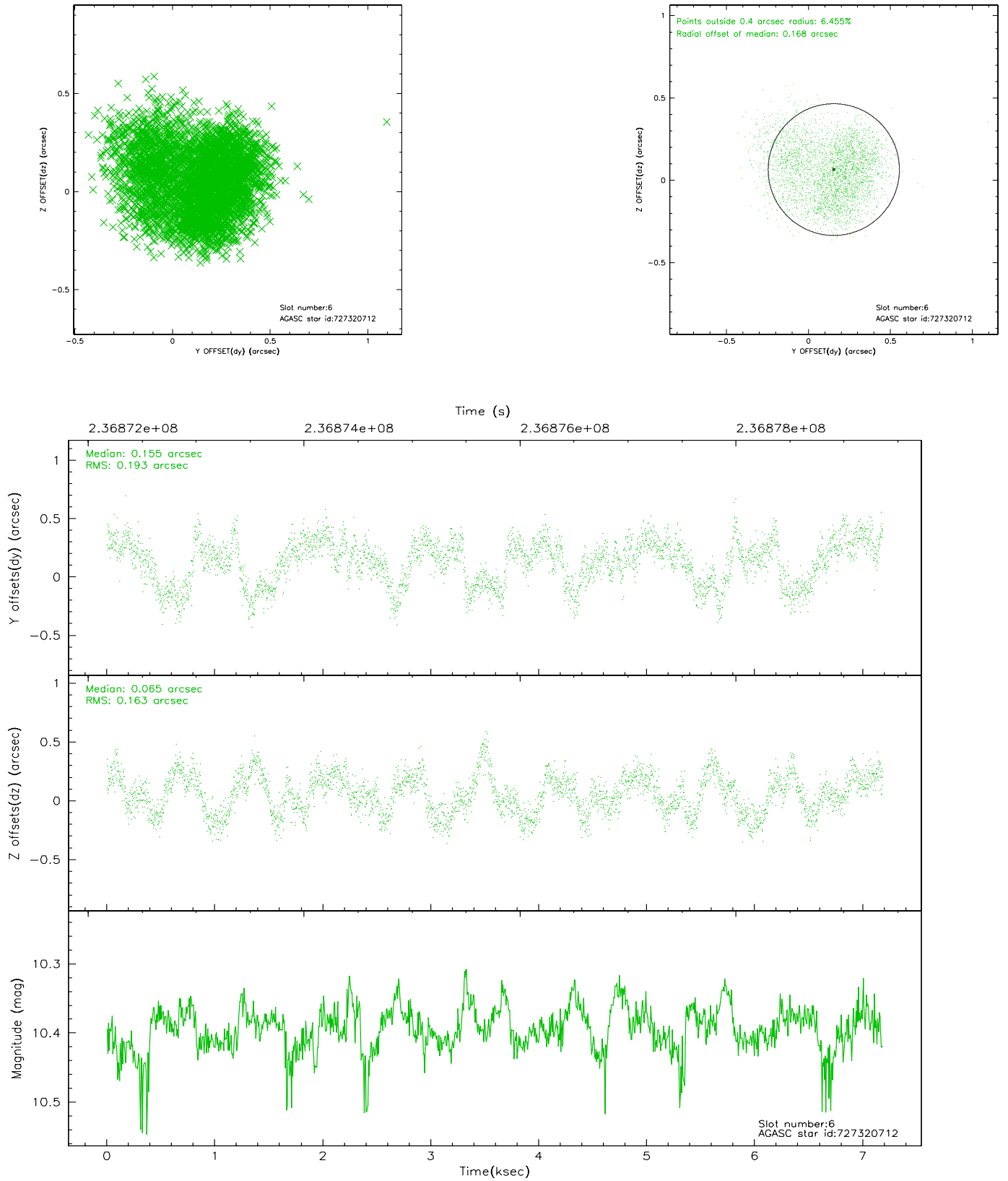
2.4.2 Slot 4



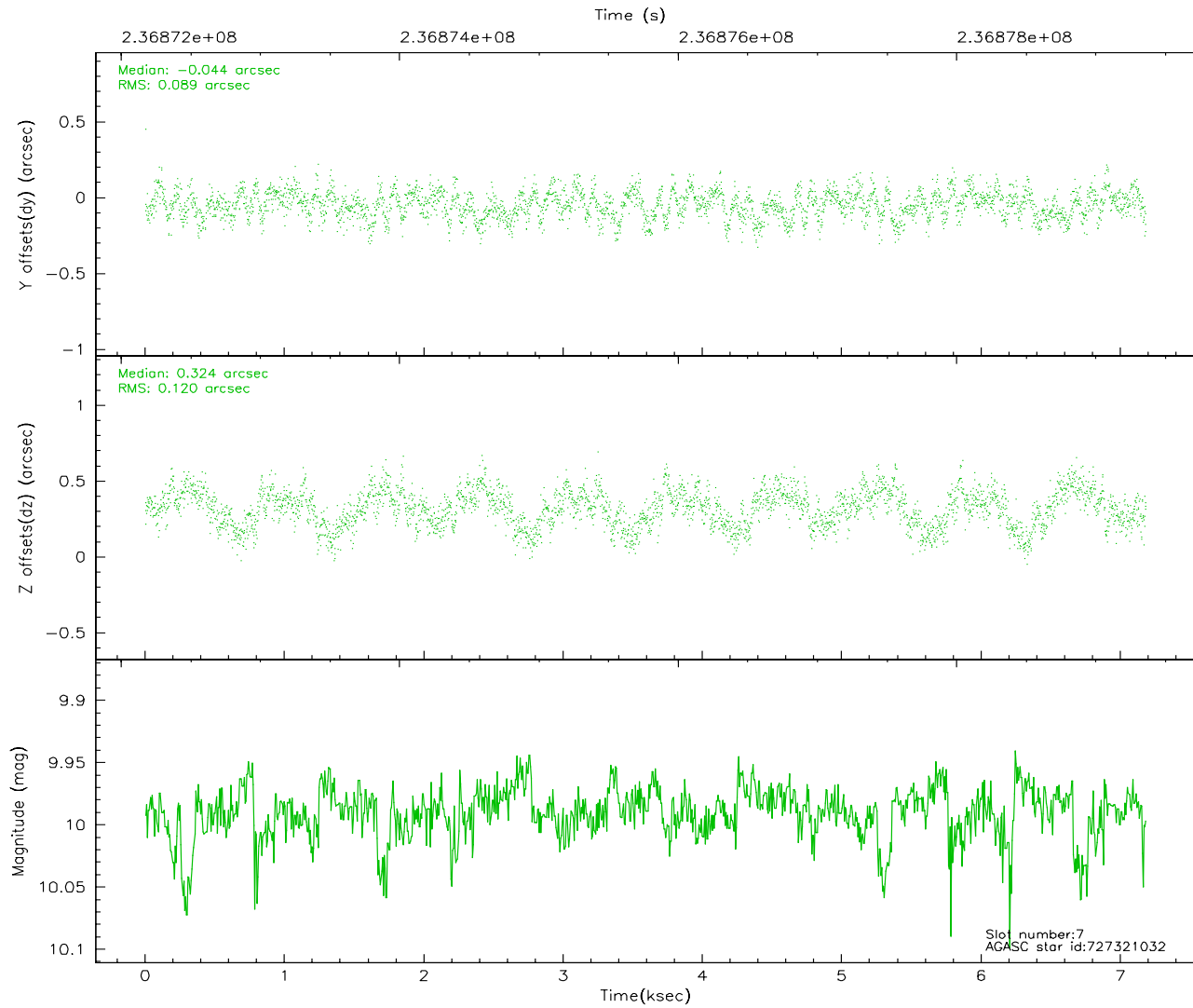
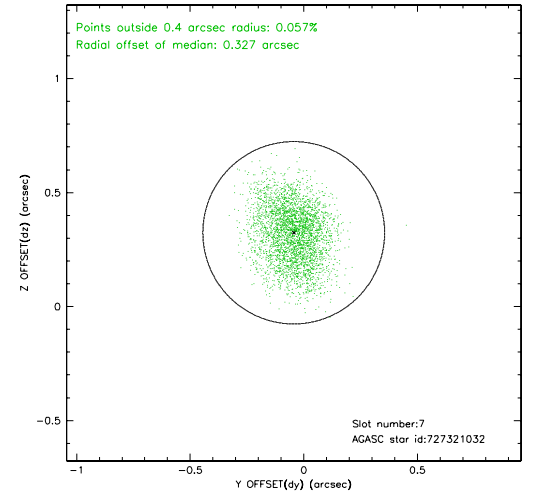
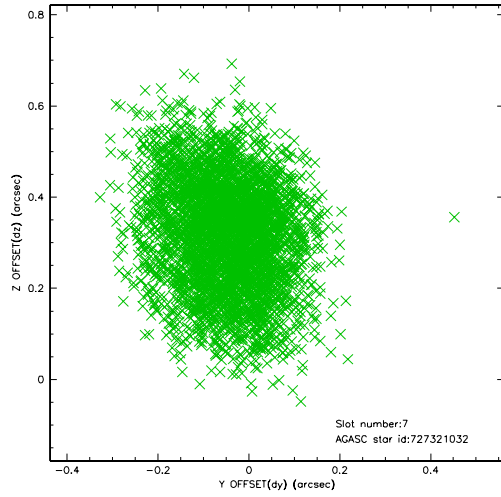
2.4.3 Slot 5



2.4.4 Slot 6

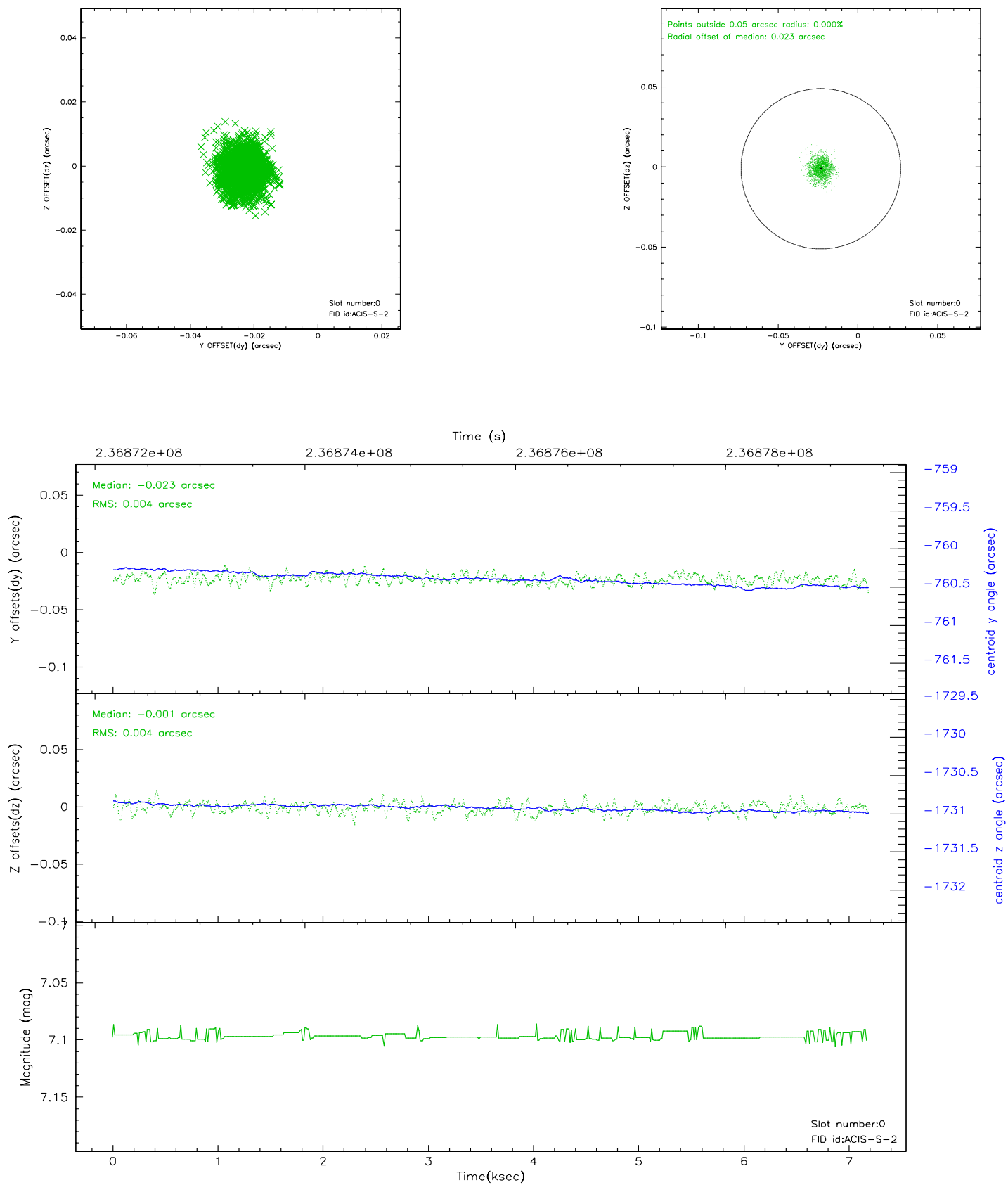


2.4.5 Slot 7

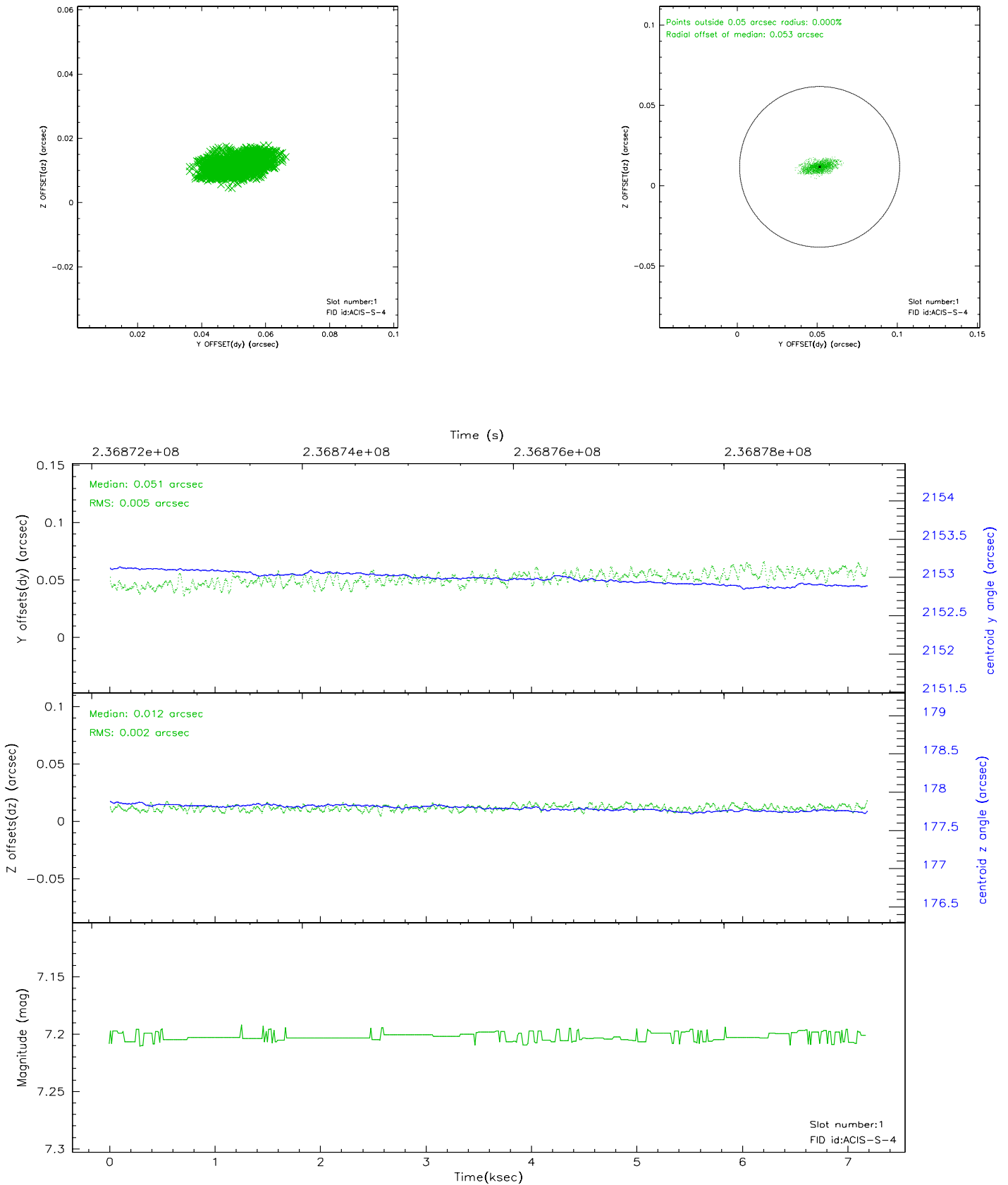


2.5 FID Slots

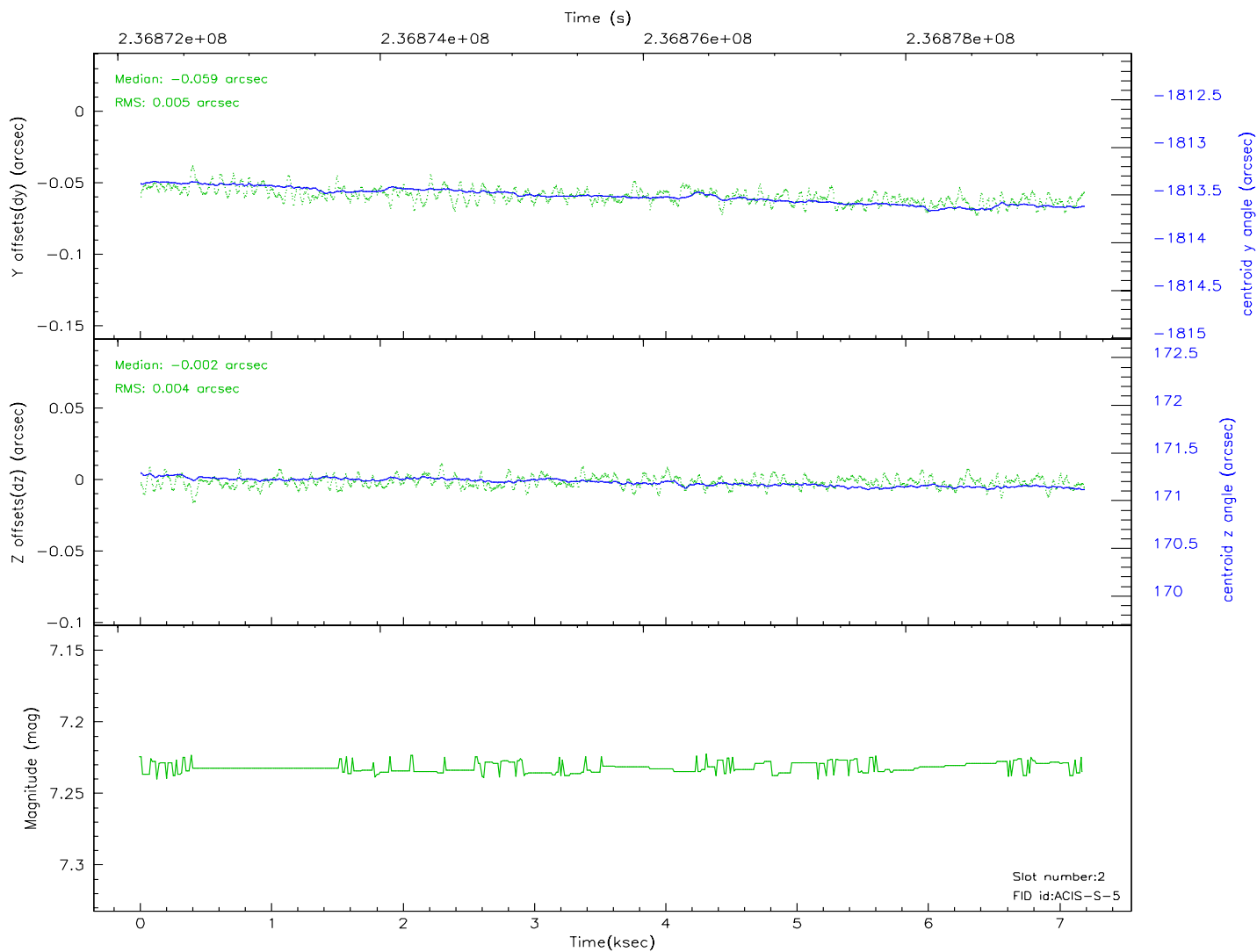
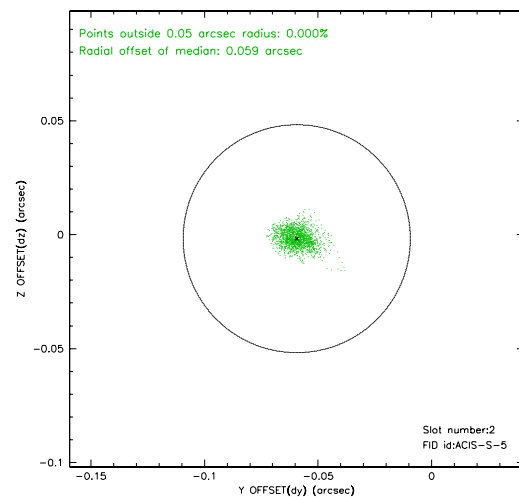
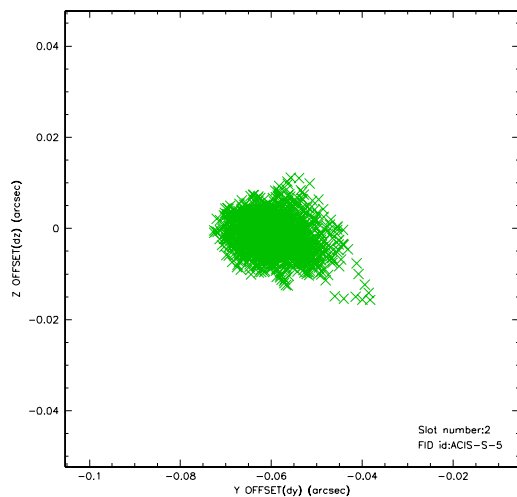
2.5.1 Slot 0



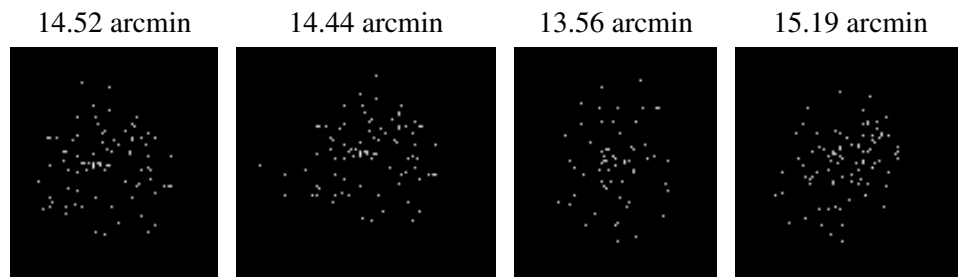
2.5.2 Slot 1



2.5.3 Slot 2



3 Point Sources



A Summary

A.1 Status

V&V Scientist	Jen Lauer
V&V Date (YYYY-MM-DD)	2006.03.13
V&V Edition	1
V&V Disposition and Status	OK
V&V Charge Time	7.180799

A.2 Comments

Target coordinates for all Comet Tempel 1 observations were specified as the same value, and is not necessarily correct. The actual pointing of this observation is correct.