

# V&V Reference Report

## L2 ASCDS Version : 7.6.7.1

Observation 6262 - L2 Version 002  
Chandra X-Ray Center

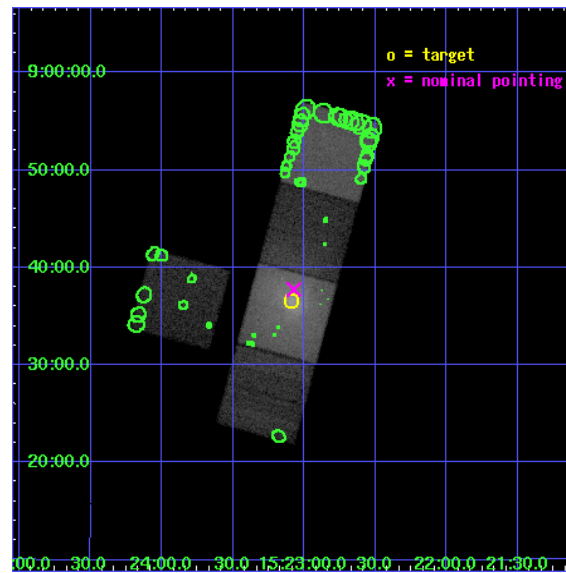
L2 Processing Date : Mar 17 2006

## Contents

<b>1</b>	<b>Front</b>	<b>2</b>
<b>2</b>	<b>OBI</b>	<b>3</b>
2.1	OBI . . . . .	3
2.1.1	Images . . . . .	3
2.1.2	Bias . . . . .	3
2.1.3	Parameters . . . . .	4
2.1.4	Events . . . . .	4
2.2	Compared Parameters . . . . .	5
2.3	Aspect . . . . .	6
2.4	Star Slots . . . . .	9
2.4.1	Slot 3 . . . . .	9
2.4.2	Slot 4 . . . . .	10
2.4.3	Slot 5 . . . . .	11
2.4.4	Slot 6 . . . . .	12
2.4.5	Slot 7 . . . . .	13
2.5	FID Slots . . . . .	14
2.5.1	Slot 0 . . . . .	14
2.5.2	Slot 1 . . . . .	15
2.5.3	Slot 2 . . . . .	16
<b>3</b>	<b>Point Sources</b>	<b>17</b>
<b>A</b>	<b>Summary</b>	<b>18</b>
A.1	Status . . . . .	18
A.2	Comments . . . . .	18

# 1 Front

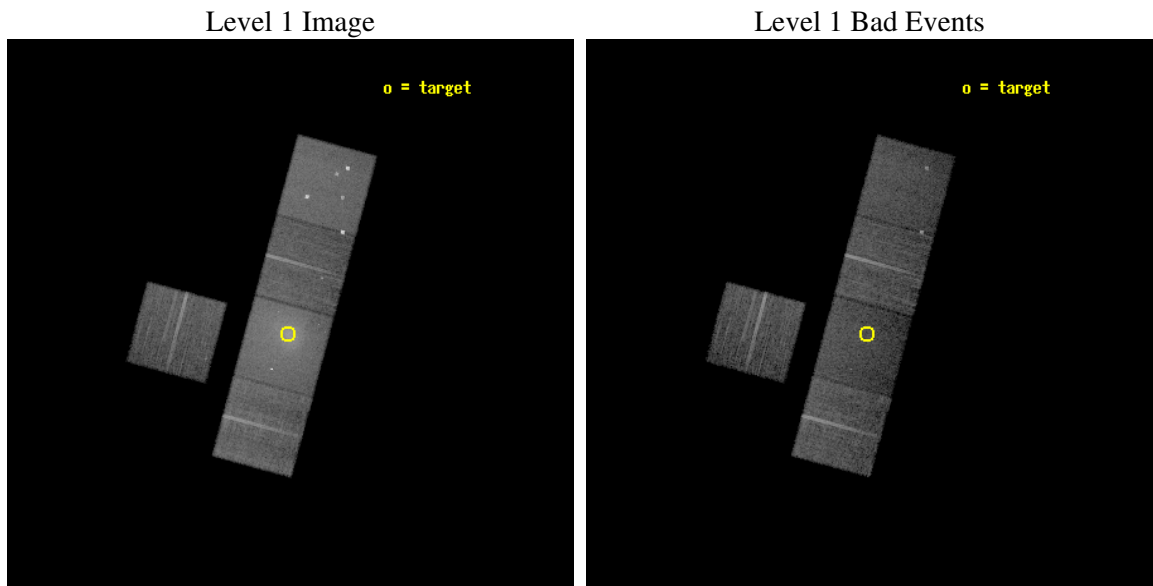
seq_num	800508
obs_id	6262
title	The Interaction between Cluster Central Radio Sources and Cooling Flows
observer	Dr. Craig Sarazin
object	A2063
dtcycle	0
cycle	P
ra_targ	230.772083
dec_targ	8.608861
ra_nom	230.76831657656
dec_nom	8.6292753121741
roll_nom	105.15721031012
revision	2
ontime	14349.899972409
livetime	14162.407965027
ontime3	14349.899972409
ontime5	14349.899972409
ontime6	14349.899972409
ontime7	14349.899972409
ontime8	14349.899972409
l2events	279613



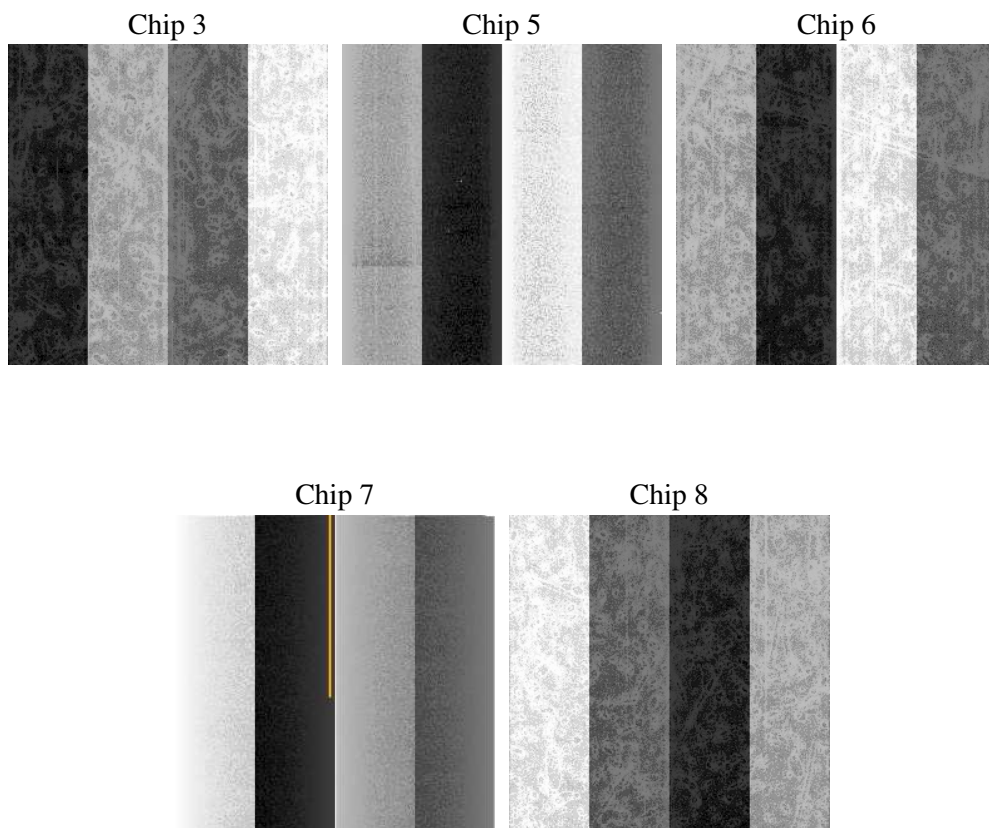
## 2 OBI

### 2.1 OBI

#### 2.1.1 Images



#### 2.1.2 Bias



### 2.1.3 Parameters

obi_num	0
ascdsver	7.6.7.1
caldbver	3.2.1
date	2006-03-17T17:59:51
revision	2

sched_exp_time	14194.194000
ontime	14992.039660573
ontime3	14992.039640665
ontime5	14992.039640665
ontime6	14992.039640665
ontime7	14992.039660573
ontime8	14992.039640665
llevents	728257

### 2.1.4 Events

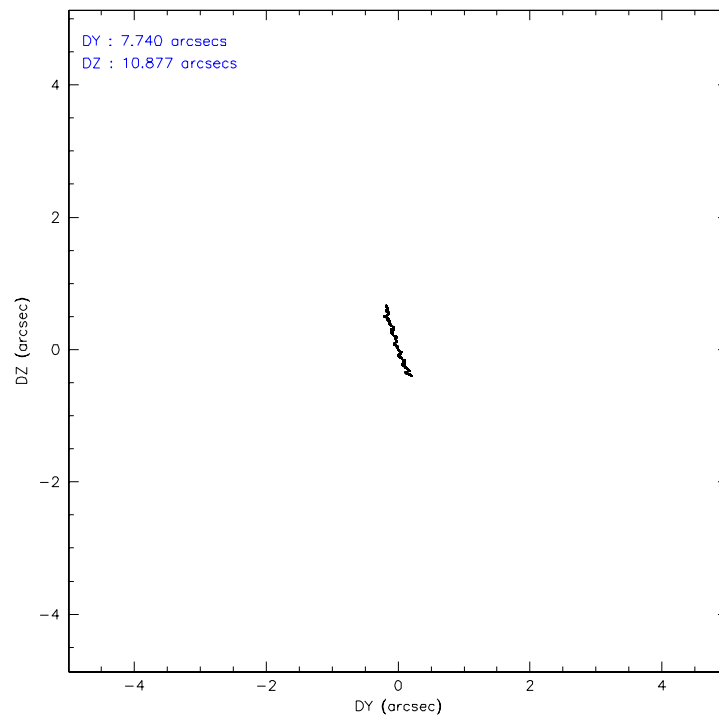
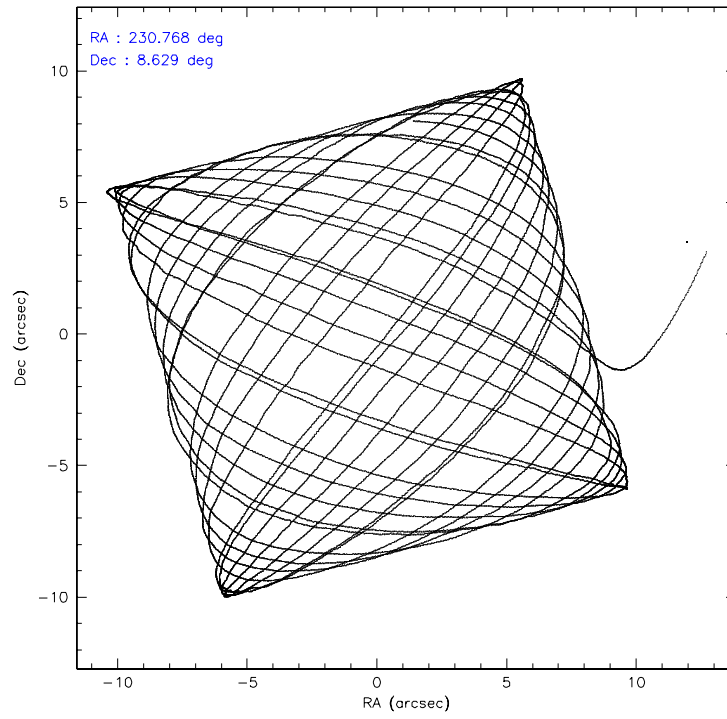
	ccd 3	ccd 5	ccd 6	ccd 7	ccd 8
level 1 events	104252	165351	119173	199120	140361
rejected events	83908	75039	88231	67983	95271
rejected %	80%	45%	74%	34%	67%

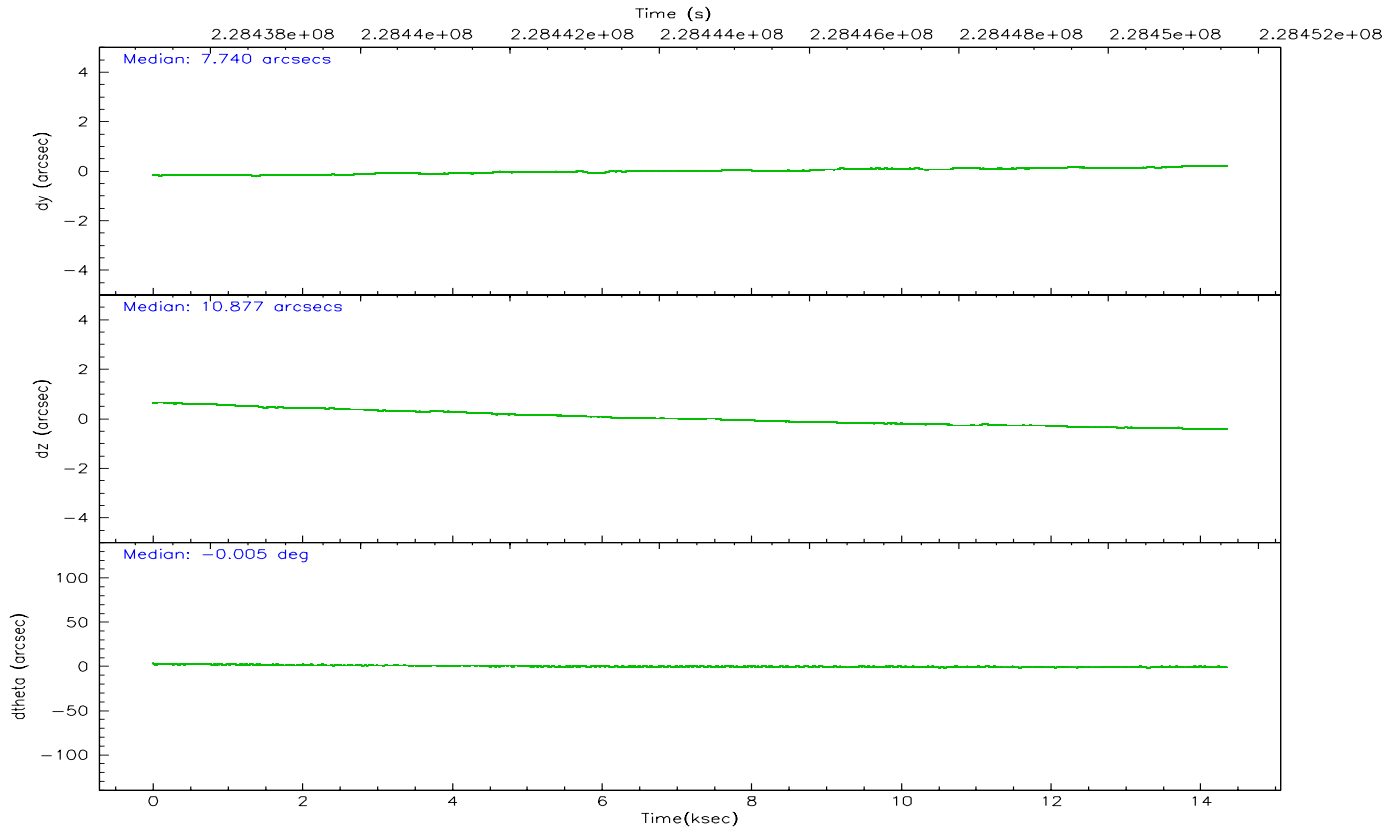
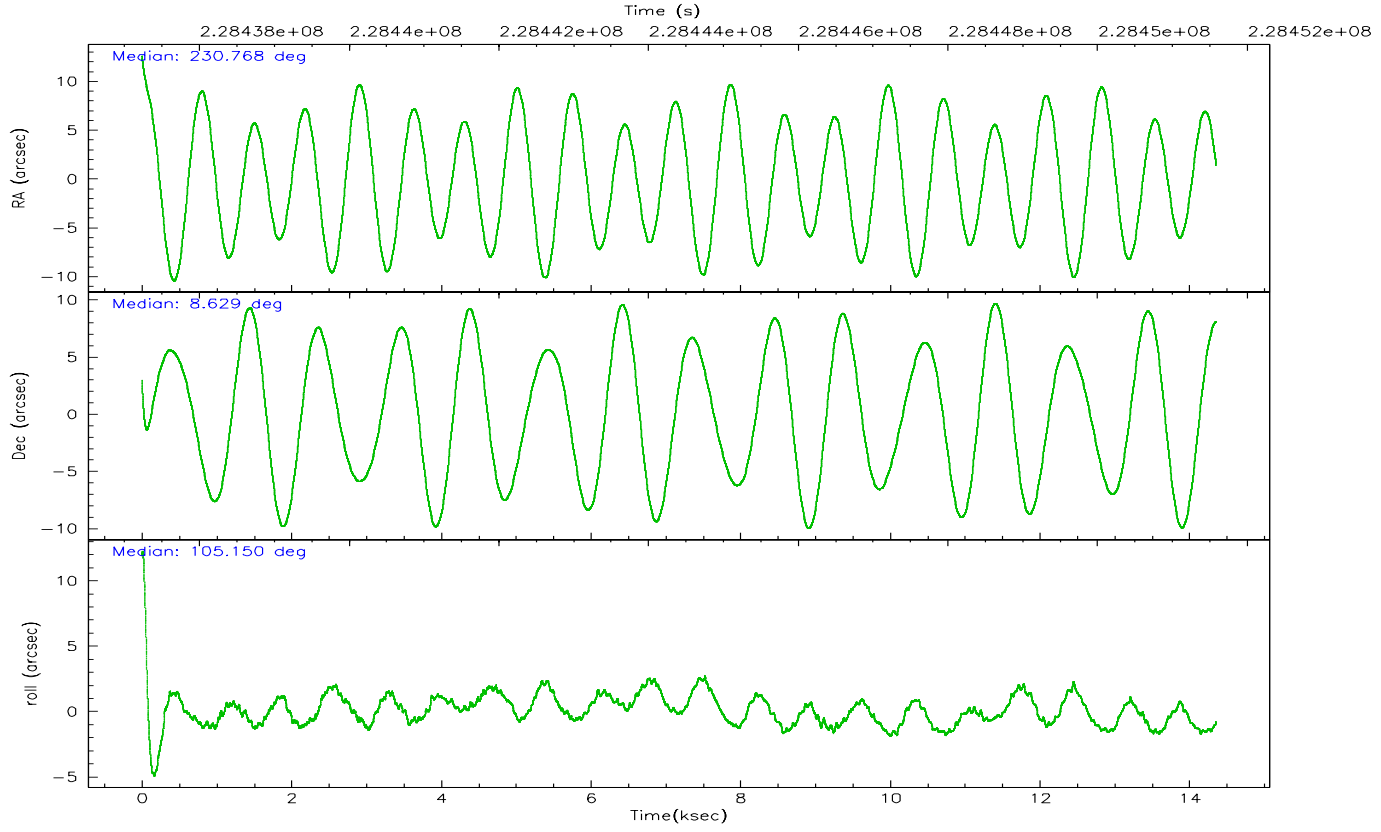
	ccd 3	ccd 5	ccd 6	ccd 7	ccd 8
grade 0 events	12709	11418	21087	24163	24378
	12%	6%	17%	12%	17%
grade 1 events	100	624	101	73	133
	0%	0%	0%	0%	0%
grade 2 events	3194	29240	4325	34537	8018
	3%	17%	3%	17%	5%
grade 3 events	1561	3926	1828	10945	3506
	1%	2%	1%	5%	2%
grade 4 events	1485	3436	1763	10648	3339
	1%	2%	1%	5%	2%
grade 5 events	3587	7766	3985	8431	5387
	3%	4%	3%	4%	3%
grade 6 events	2482	46229	3196	54770	8285
	2%	27%	2%	27%	5%
grade 7 events	79134	62712	82888	55553	87315
	75%	37%	69%	27%	62%

## 2.2 Compared Parameters

Parameter	Planned	Actual	Parameter	Planned	Actual
Instrument	ACIS	ACIS	Obspar format version number	6	6
Detector	ACIS-35678	ACIS-35678	Obspar file type	PREDICTED	ACTUAL
Grating	NONE	NONE	Obspar update status	NONE	UPDATED
Data mode	VFAINT	VFAINT	On-chip summing requested	N	N
Observation mode	POINTING	POINTING	Subarray requested	NONE	NONE
Pointing RA	230.788090	230.7683165765608	Alternating exposures requested	N	N
Pointing Dec	8.610335	8.629275312174082	Primary exposure time	0.000000	3.1
Pointing Roll	104.997600	105.1572103101211			
SIM focus pos (mm)	-0.684267	-0.6828225247311905			
SIM defocus (mm)	0	0.001444936568705701			
SIM translation stage pos (mm)	-190.132523	-190.1400660498719			
SIM translation stage offset (mm)	0	0.00754346686406393			
Observation start time	228437390.184000	228436028.11426			
Observation start date	2005-03-28T22:48:46	2005-03-28T22:27:08			
Observation end time	228451585.184000	228451802.35247			
Observation end date	2005-03-29T02:45:21	2005-03-29T02:50:02			
Read mode	TIMED	TIMED			

## 2.3 Aspect





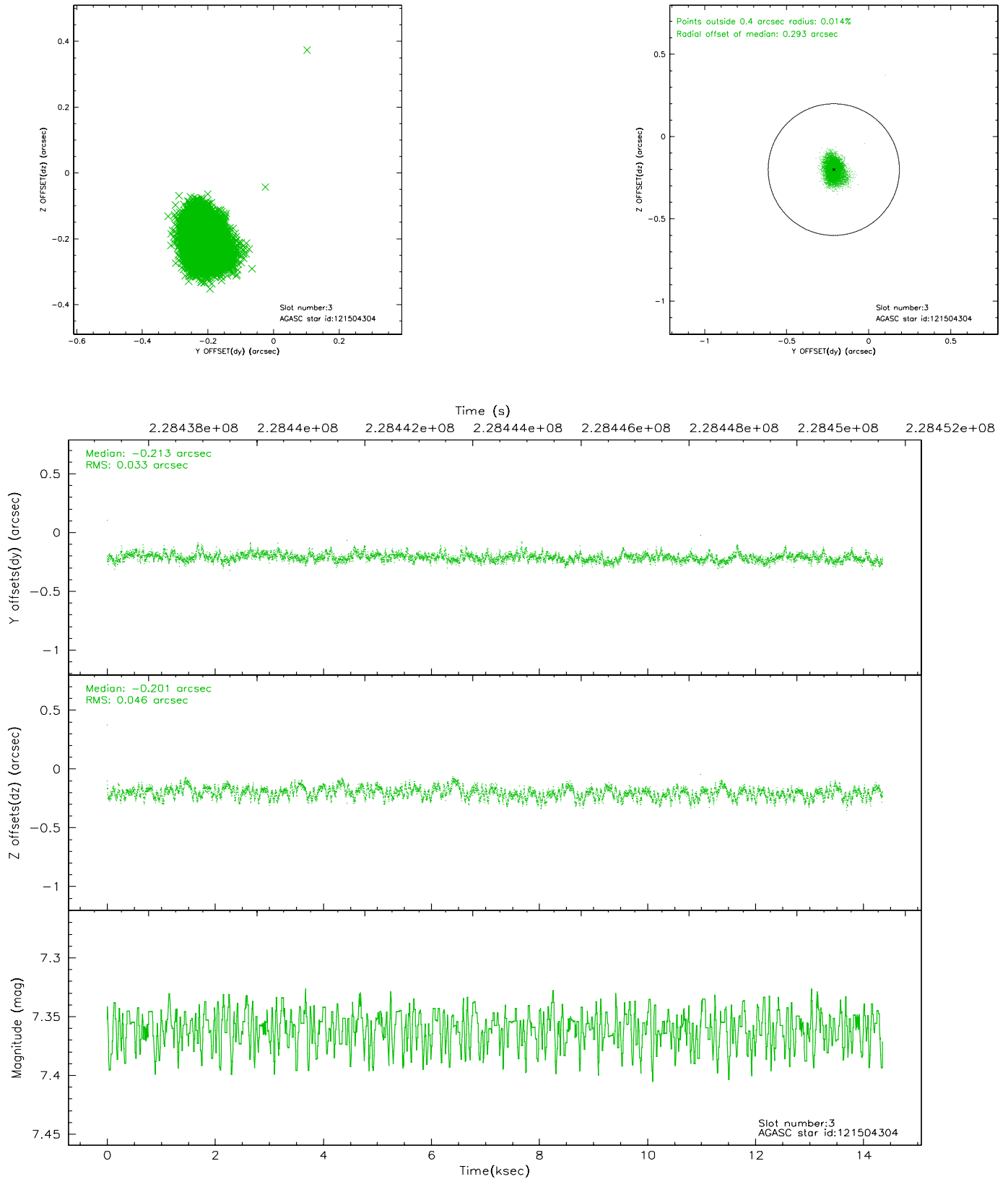
### Slot Statistics

slot	status	id	mag	n_pts	med_dy	med_dz	dr1	dr2	ra	dec	mean_y	mean_z
0	FID	ACIS-S-2	7.11	3502	-0.026	0.008	0.010	0.016	0.000000	0.000000	-760.50	-1732.20
1	FID	ACIS-S-4	7.20	3502	0.053	0.011	0.009	0.016	0.000000	0.000000	2152.67	176.02
2	FID	ACIS-S-5	7.23	3501	-0.059	-0.009	0.010	0.015	0.000000	0.000000	-1813.00	169.95
3	GUIDE	121504304	7.36	7003	-0.213	-0.201	0.059	0.098	230.179446	8.913720	1616.57	1808.09
4	GUIDE	121507480	8.81	6999	0.119	-0.141	0.074	0.122	230.407322	8.449858	-206.24	1459.78
5	GUIDE	121507864	9.73	6988	0.160	0.042	0.106	0.173	231.118023	8.893781	682.94	-1397.17
6	GUIDE	121508304	7.54	7004	-0.287	0.066	0.063	0.099	231.074833	9.087473	1395.94	-1428.99
7	GUIDE	121506400	9.07	7001	0.225	0.234	0.090	0.147	231.447386	8.409178	-1304.36	-2081.07

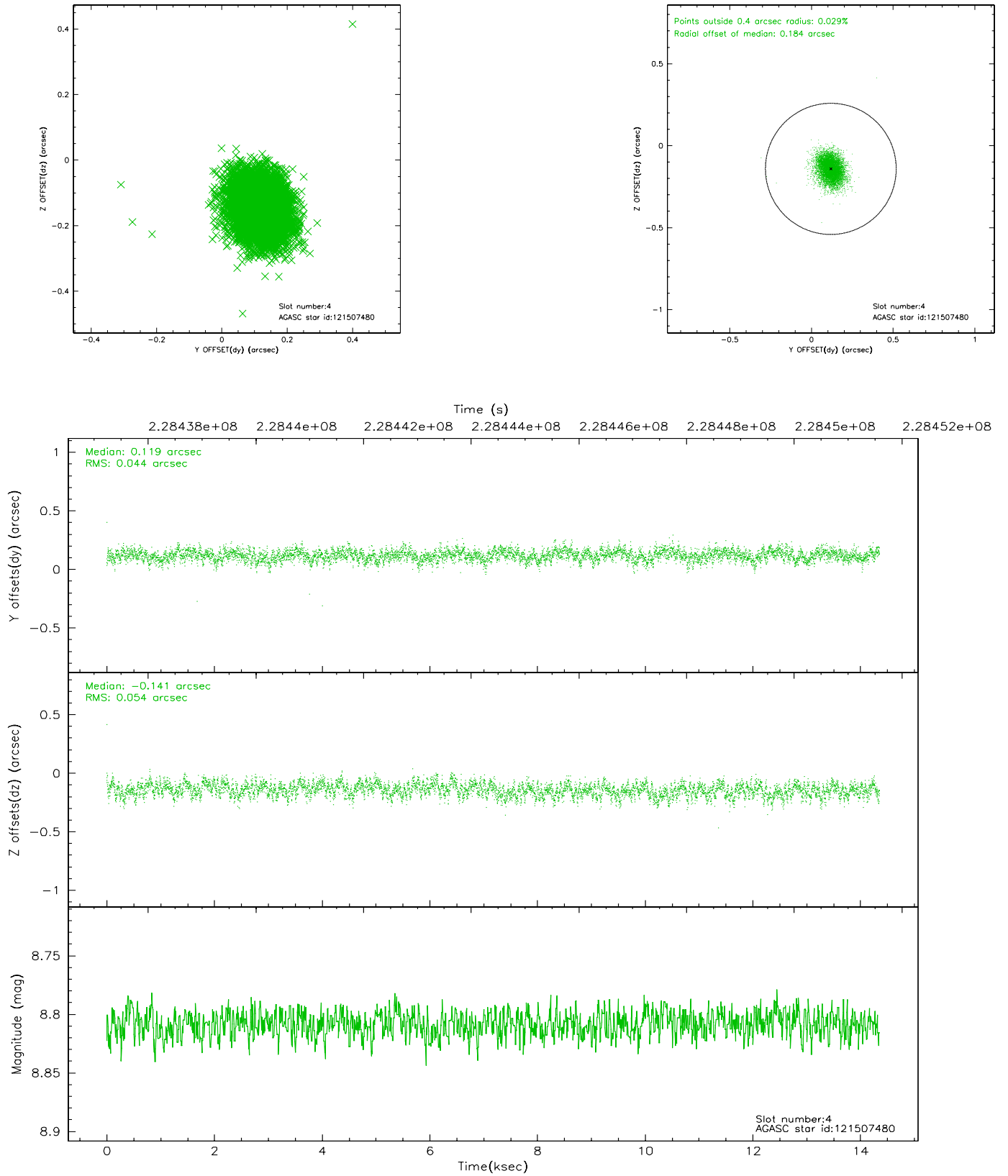


## 2.4 Star Slots

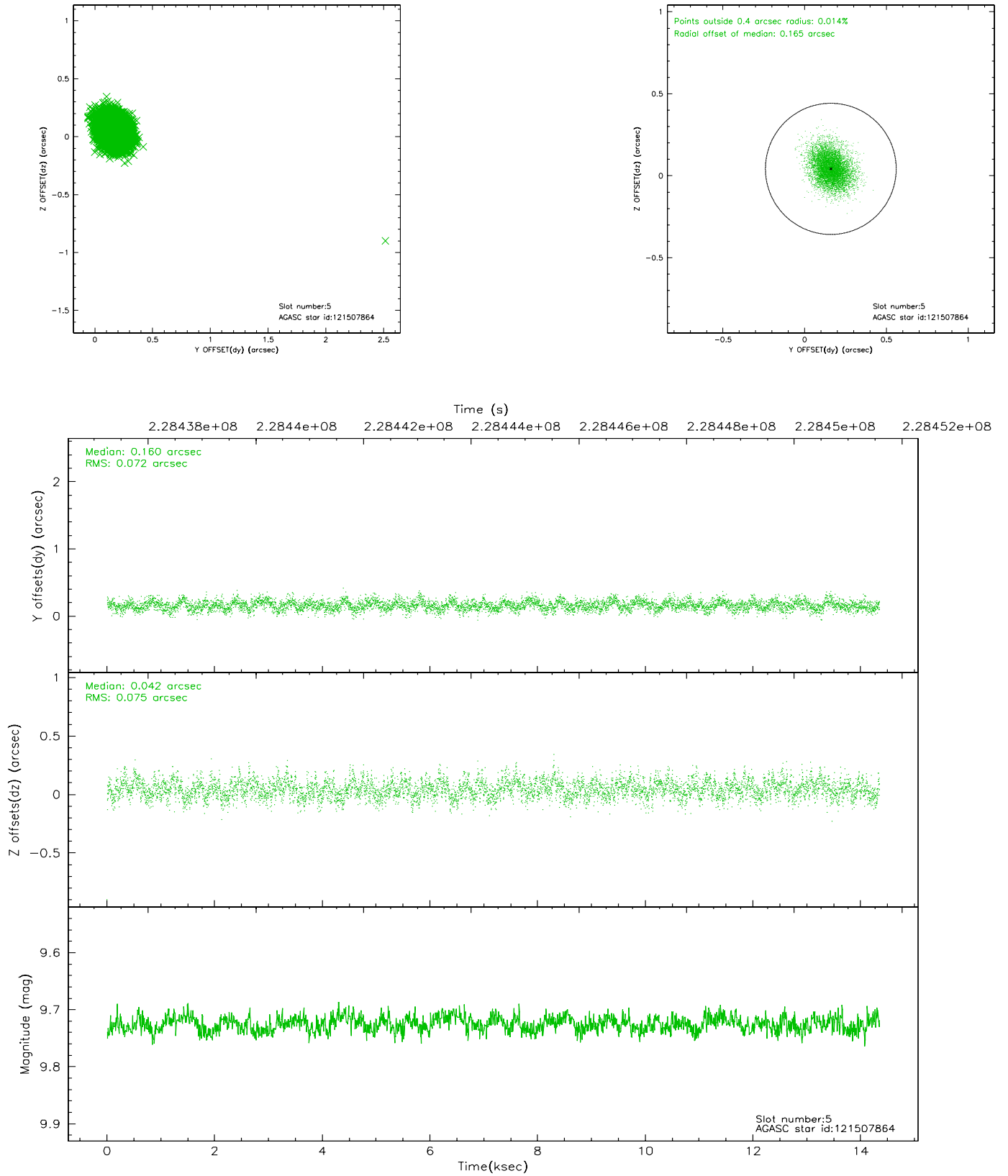
### 2.4.1 Slot 3



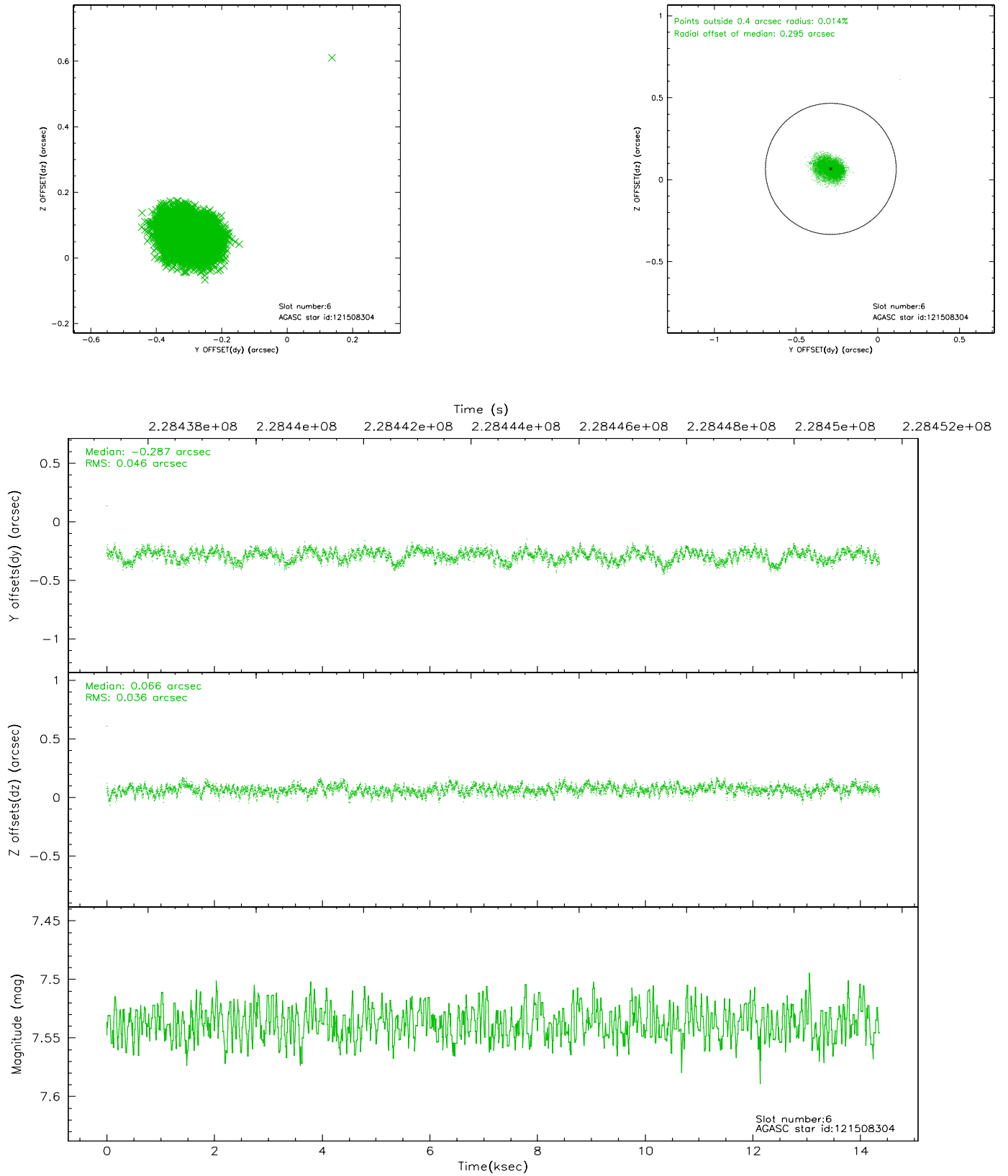
## 2.4.2 Slot 4



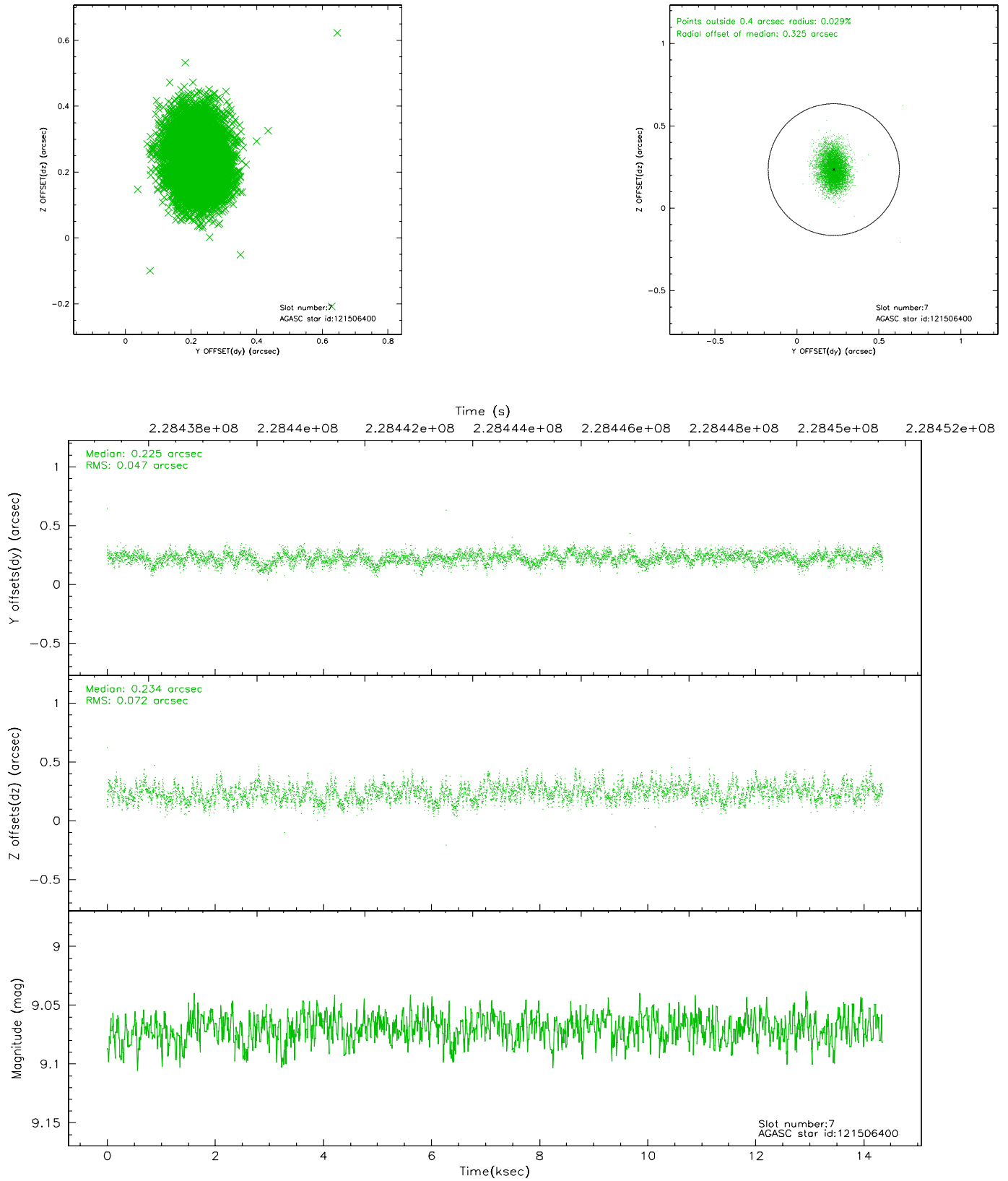
### 2.4.3 Slot 5



## 2.4.4 Slot 6

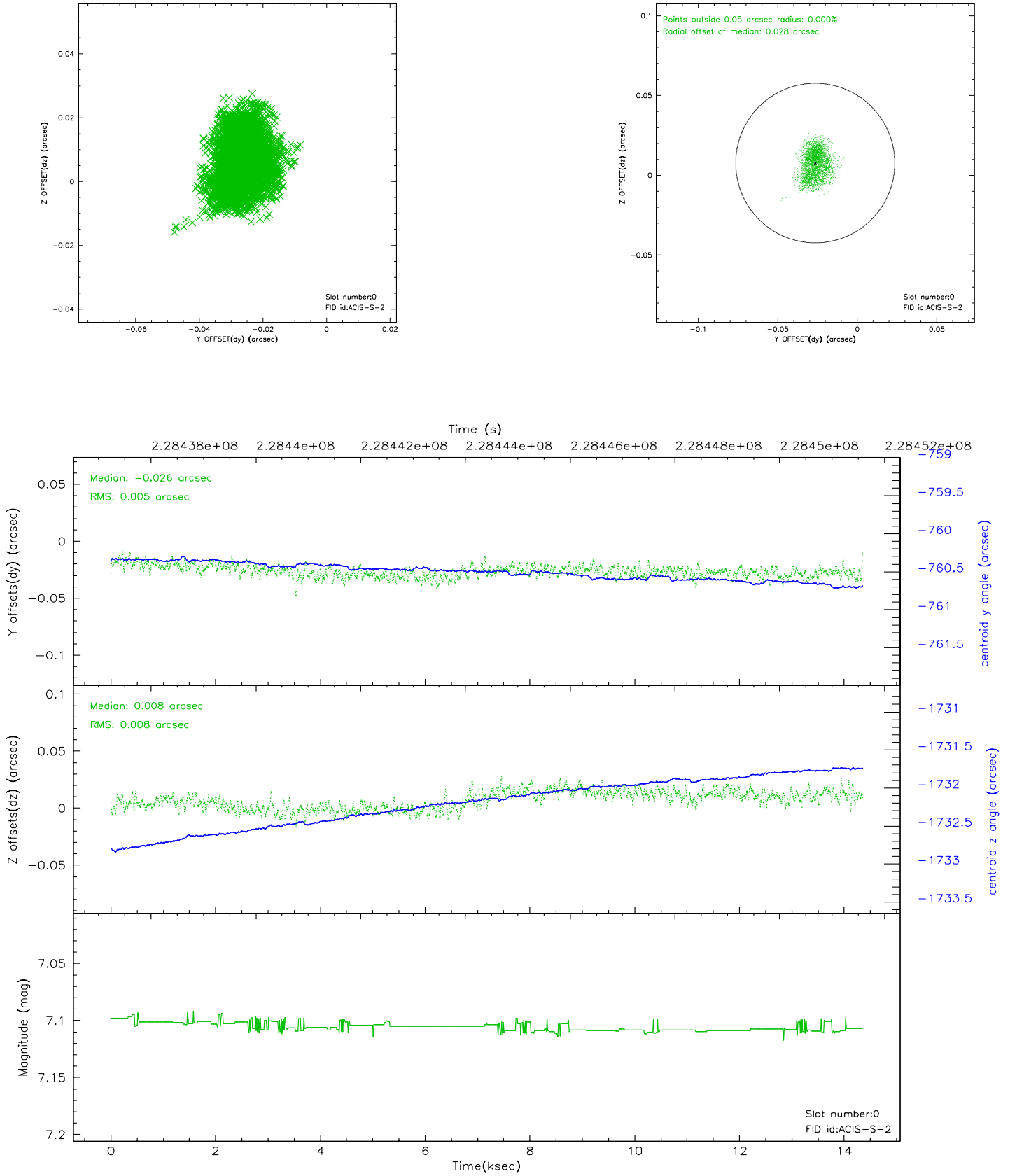


## 2.4.5 Slot 7

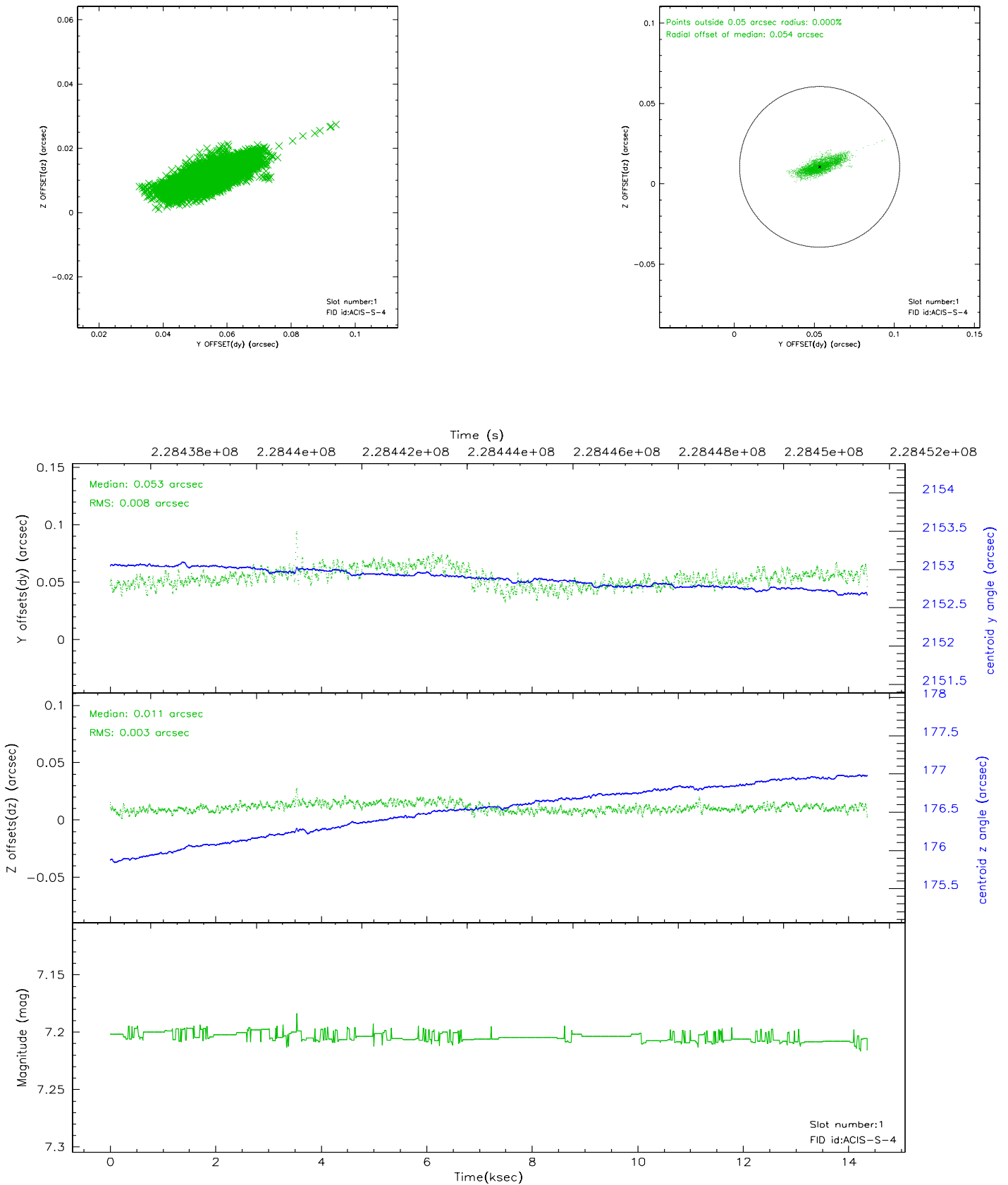


## 2.5 FID Slots

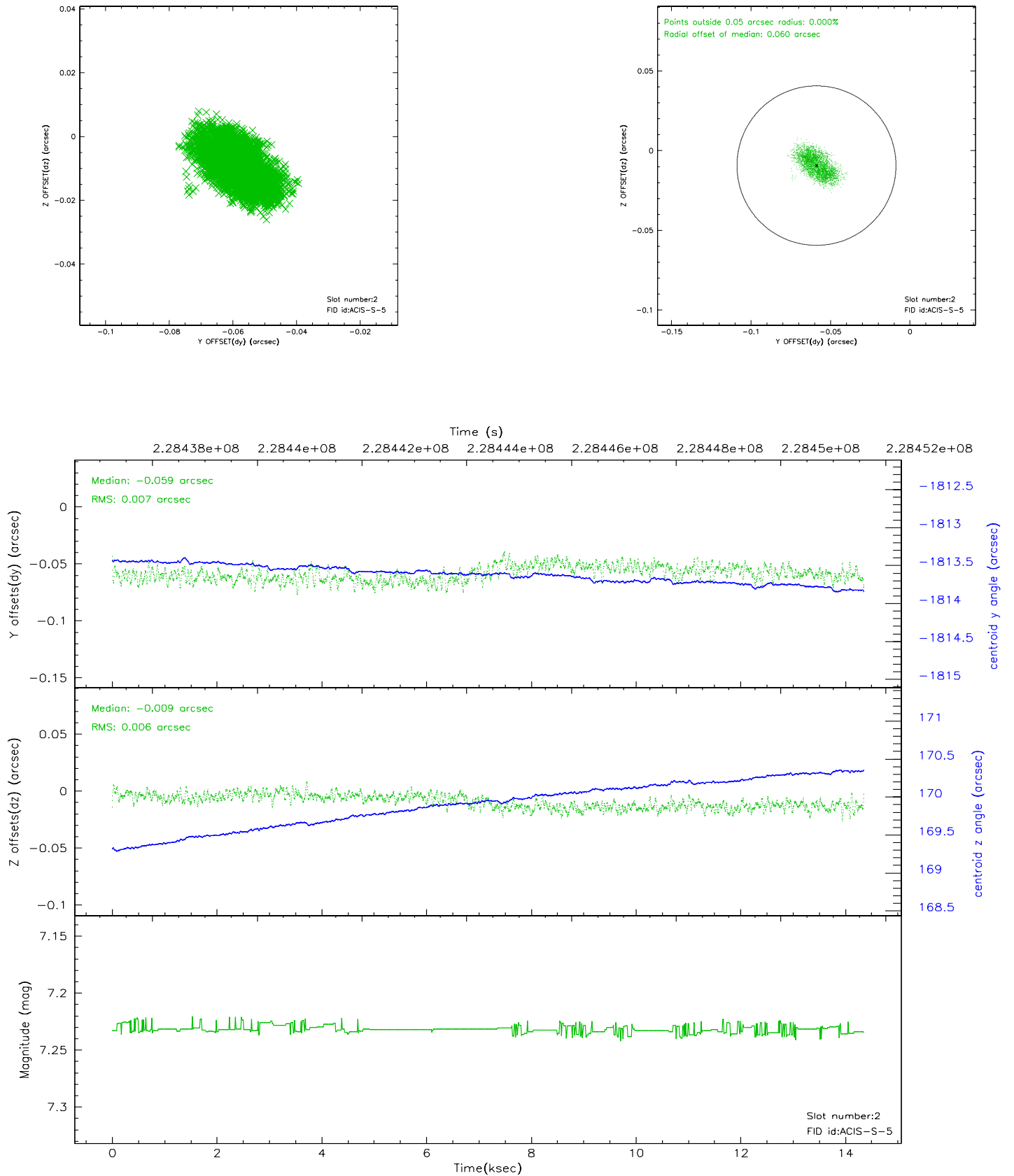
### 2.5.1 Slot 0



## 2.5.2 Slot 1

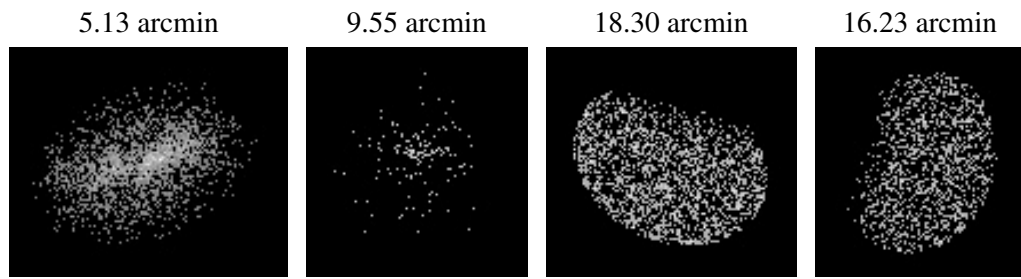


### 2.5.3 Slot 2





### 3 Point Sources



## A Summary

### A.1 Status

V&V Scientist	Beth Sundheim
V&V Date (YYYY-MM-DD)	2006.03.17
V&V Edition	1
V&V Disposition and Status	OK
V&V Charge Time	14.34989

### A.2 Comments