

V&V Reference Report

L2 ASCDS Version : 8.2.1

Observation 62442 - L2 Version 3
Chandra X-Ray Center

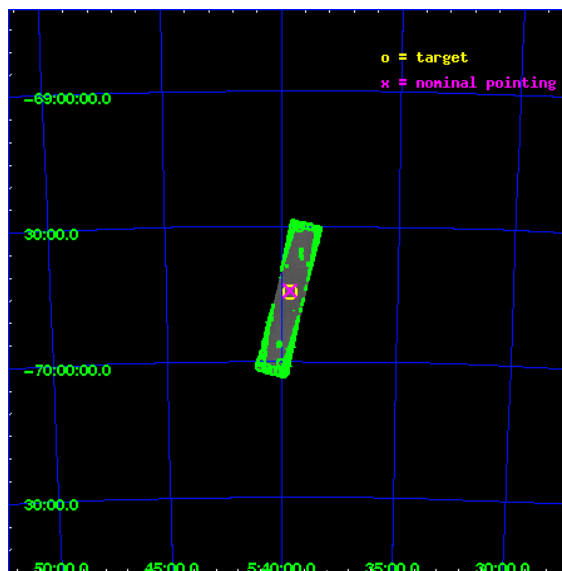
L2 Processing Date : Feb 11 2010

Contents

1	Front	2
2	OBI	3
2.1	OBI	3
2.1.1	Images	3
2.1.2	Parameters	4
2.1.3	Events	4
2.2	Compared Parameters	5
2.3	Aspect	6
2.4	Star Slots	9
2.4.1	Slot 3	9
2.4.2	Slot 4	10
2.4.3	Slot 5	11
2.4.4	Slot 6	12
2.4.5	Slot 7	13
2.5	FID Slots	14
2.5.1	Slot 0	14
2.5.2	Slot 1	15
2.5.3	Slot 2	16
3	Point Sources	17
A	Summary	18
A.1	Status	18
A.2	Comments	18

1 Front

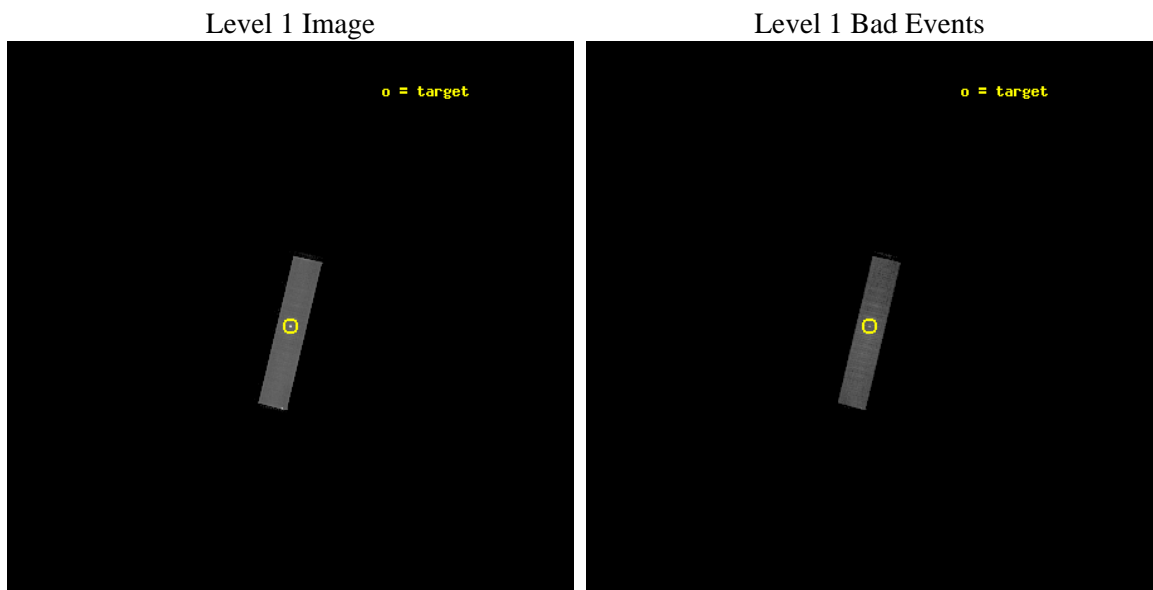
seq_num	490010	Sequence number
obs_id	62442	Observation id
title	 	Proposal title
observer	Dr. CXC Calibration	Principal investigator
object	LMC X-1	Source name
ra_targ	84.914583	Observer's specified target RA
dec_targ	-69.743611	Observer's specified target Dec
ra_nom	84.912711999463	Nominal RA
dec_nom	-69.738228522345	Nominal Dec
roll_nom	103.53011499587	Nominal Roll
revision	3	Processing version of data
ontime	6232.0002237633	[s]
livetime	6173.0973482239	Ontime multiplied by DTCOR
l2events	377369	Number of level 2 events



2 OBI

2.1 OBI

2.1.1 Images



2.1.2 Parameters

obi_num	0	Obi number	sched_exp_time	36000.000000	Scheduled observation exposure time
ascdsver	8.2.1	Processing system revision	ontime	6232.0002237633	[s]
caldbver	4.1.5	 	ll events	507478	Number of level 1 events
date	2010-02-11T19:38:32	Date and time of file creation			
revision	3	Processing version of data			

2.1.3 Events

Level 1 Events

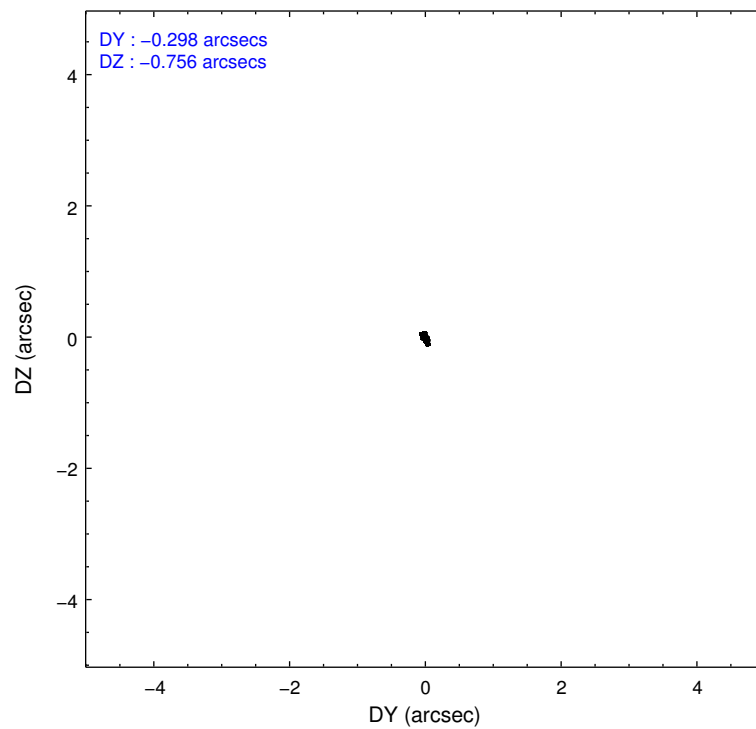
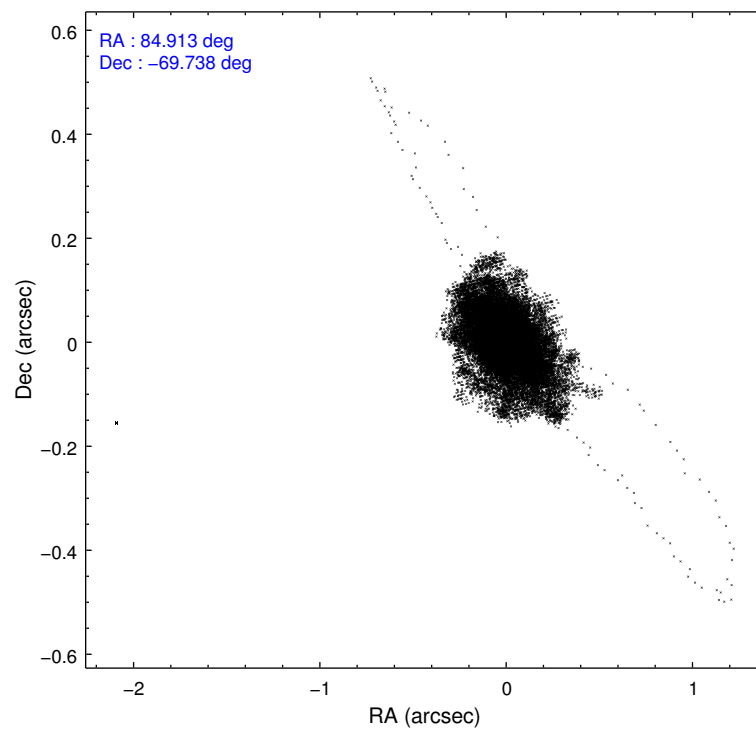
	segment 1	segment 2	segment 3
level 1 events	0	507478	0
rejected events	0	101793	0
rejected %	0%	20%	0%

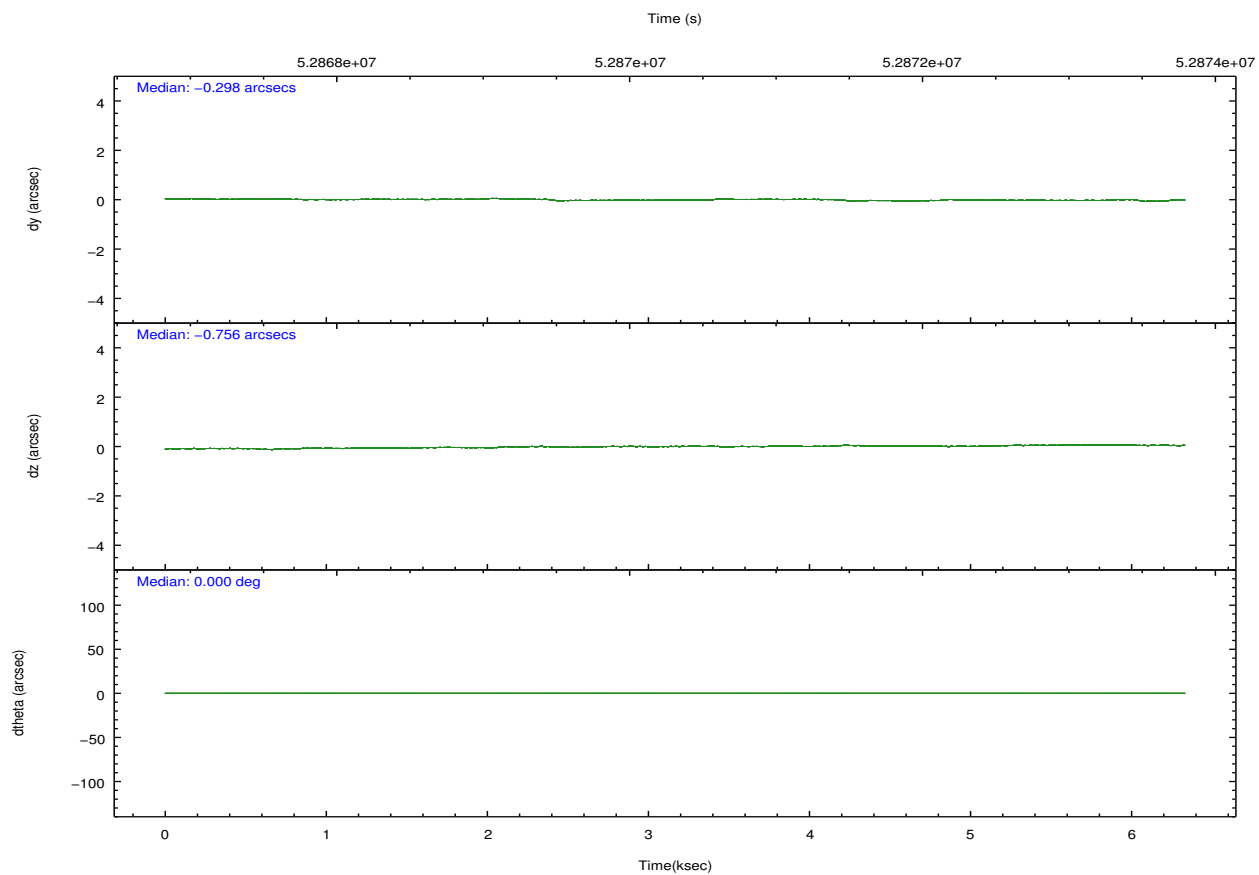
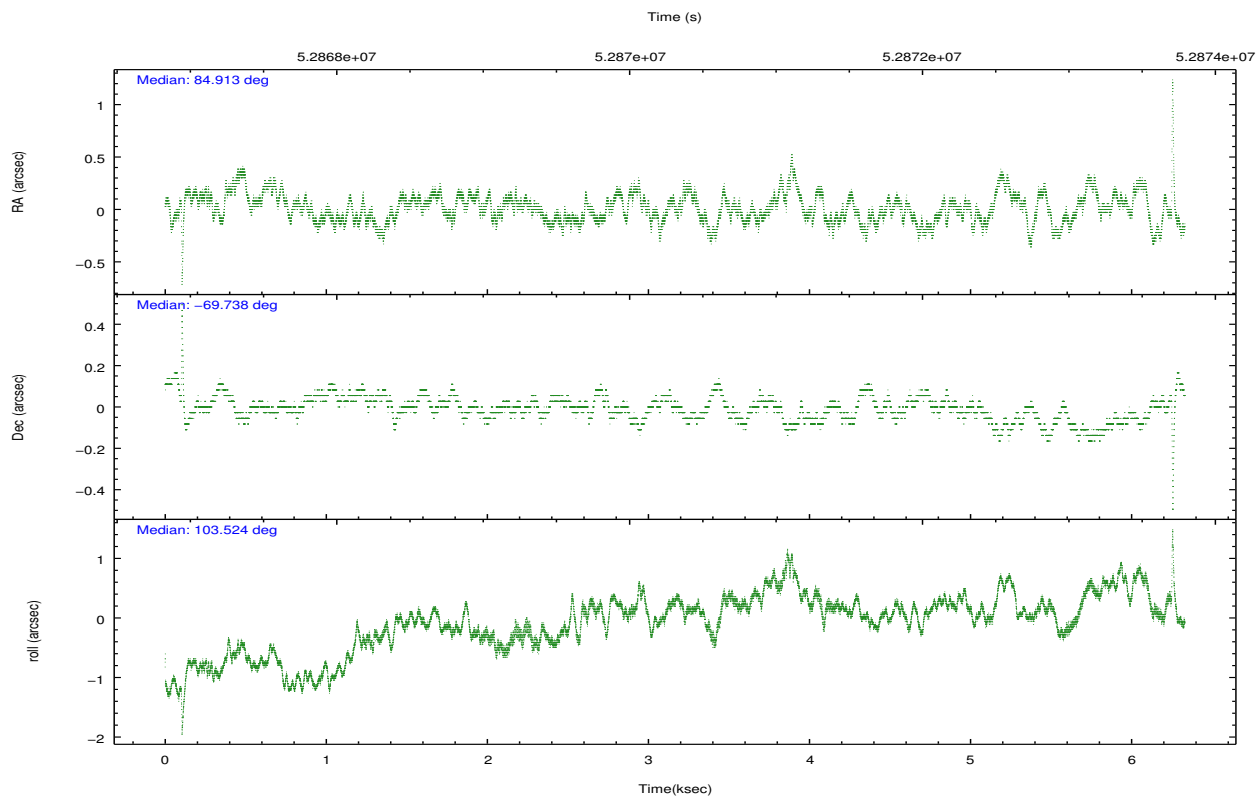
2.2 Compared Parameters

Parameter	Planned	Actual
Instrument	HRC	HRC
Detector	HRC-S	HRC-S
Grating	NONE	NONE
Data mode	OBSERVING	OBSERVING
Observation mode	POINTING	POINTING
Pointing RA	84.971636	84.91271199946269
Pointing Dec	-69.758744	-69.73822852234525
Pointing Roll	103.518059	103.5301149958745
Window start time	52856164.184000	52856164.184000
Window stop time	52892164.184000	52892164.184000
SIM focus pos (mm)	-1.429586	-0.7765883295792845
SIM defocus (mm)	0.1037507710433287	0.7567483098250124
SIM translation stage pos (mm)	250.455976	250.466033080201
SIM translation stage offset (mm)	0	-0.01005468664627074
Observation start time	52856164.184000	52867142.63689
Observation start date	1999-09-04T18:15:00	1999-09-04T21:19:02
Observation end time	52892164.184000	52873477.137118
Observation end date	1999-09-05T04:15:00	1999-09-04T23:04:37

Parameter	Planned	Actual
Obspar format version number	6	6
Obspar file type	PREDICTED	ACTUAL
Obspar update status	NONE	UPDATED

2.3 Aspect



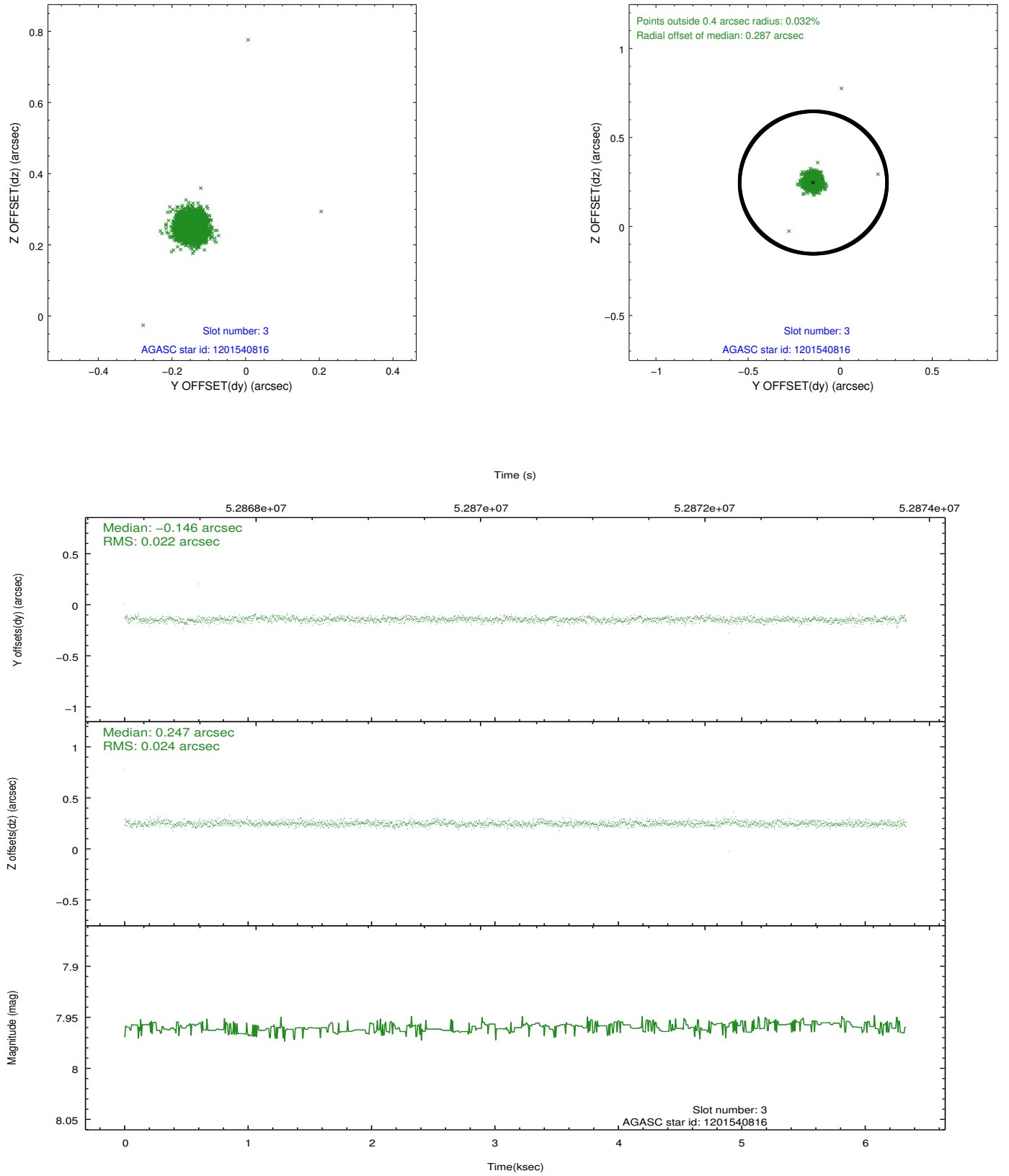


Slot Statistics

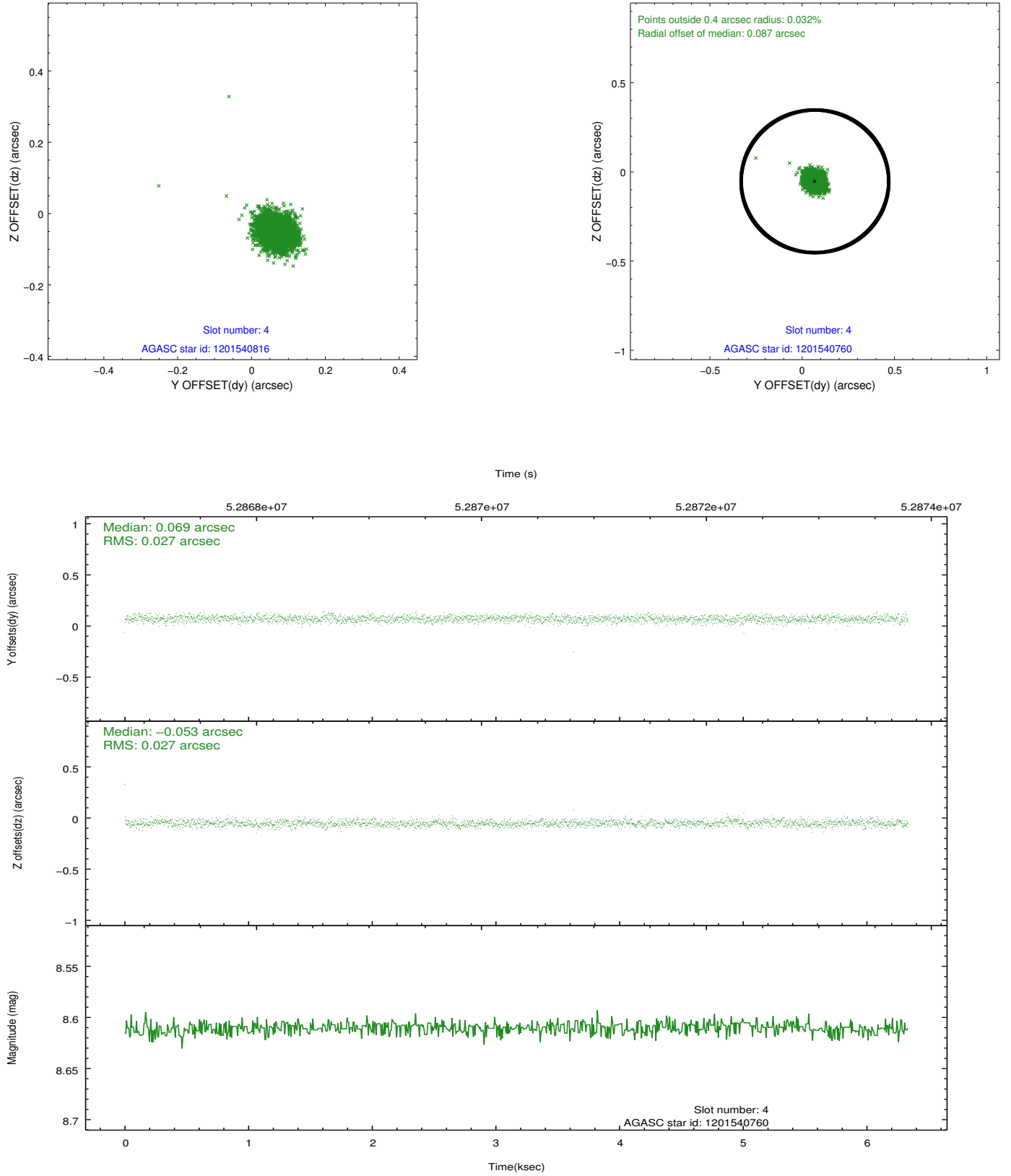
slot	status	id	mag	n_pts	med_dy	med_dz	dr1	dr2	ra	dec	mean_y	mean_z
0	BAD	HRC-S-1	7.00	2544	0.098	0.043	0.013	0.020	0.000000	0.000000	-1153.82	-447.33
1	FID	HRC-S-3	7.01	3090	0.126	-0.096	0.000	0.000	0.000000	0.000000	-1156.82	581.97
2	BAD	HRC-S-4	6.99	2816	0.180	-0.245	0.014	0.025	0.000000	0.000000	1244.33	584.58
3	GUIDE	1201540816	7.96	3088	-0.146	0.247	0.032	0.051	86.998494	-69.749817	-599.64	-2451.88
4	GUIDE	1201540760	8.61	3090	0.069	-0.053	0.038	0.064	84.403691	-70.419249	-2155.17	1222.54
5	GUIDE	1201411368	10.03	3088	-0.199	-0.071	0.092	0.157	83.629696	-70.495613	-2220.73	2193.36
6	GUIDE	1200883536	9.87	3089	0.119	0.032	0.080	0.134	83.119228	-69.218429	2408.65	1855.80
7	GUIDE	1201020088	10.48	3087	0.161	-0.157	0.113	0.192	86.319248	-68.997756	2239.91	-2325.02

2.4 Star Slots

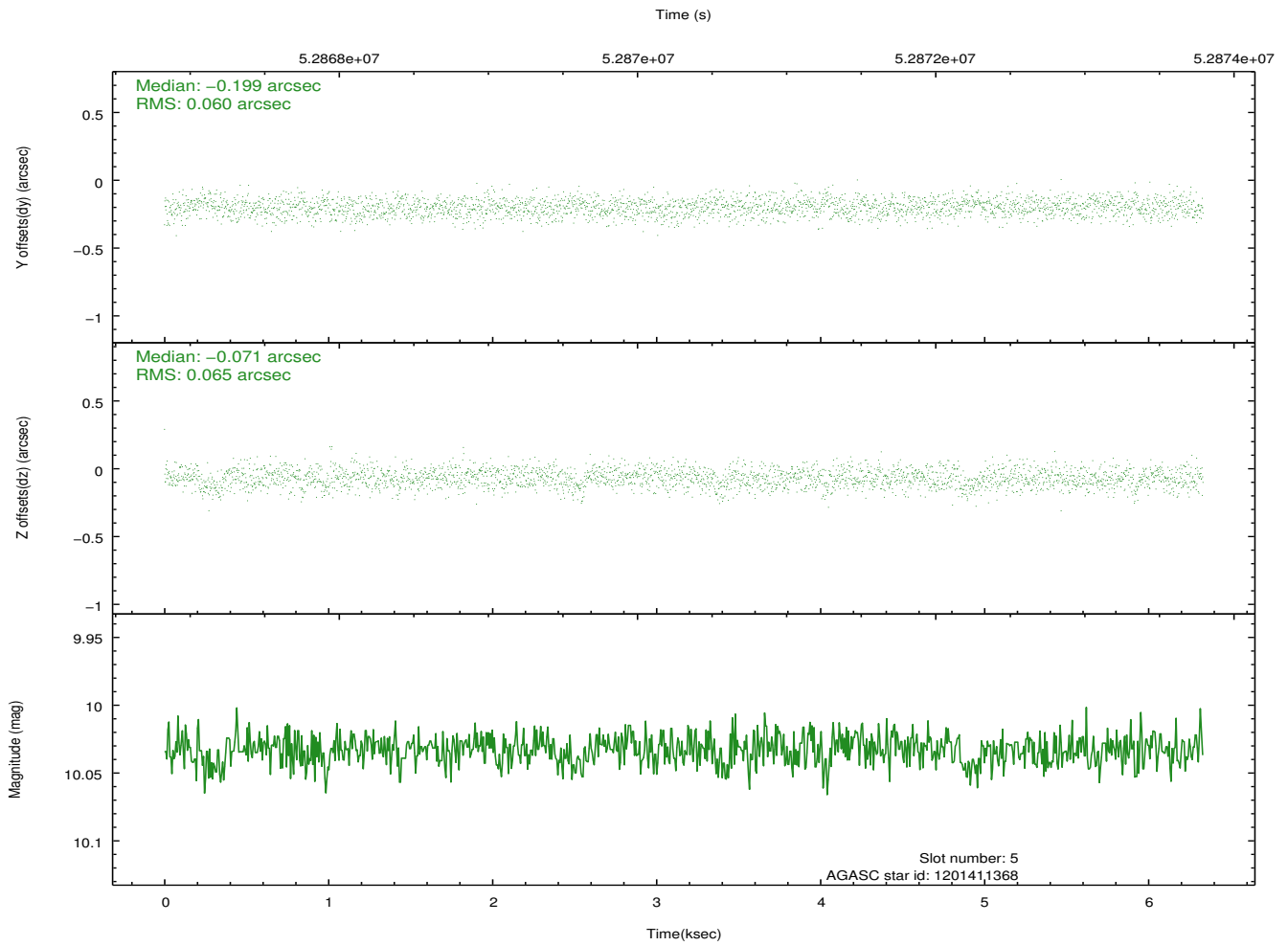
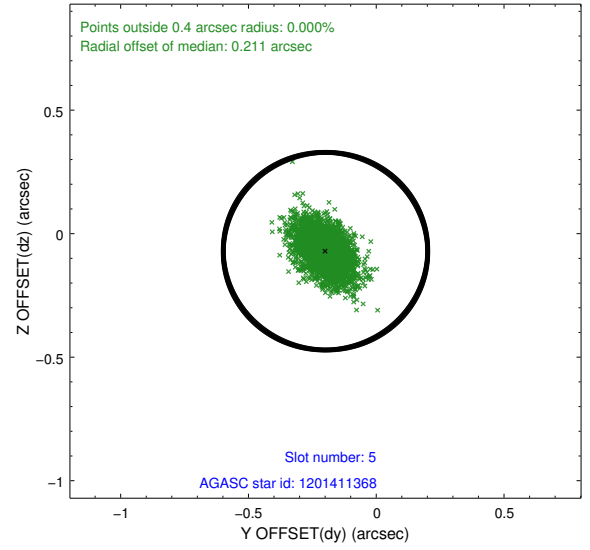
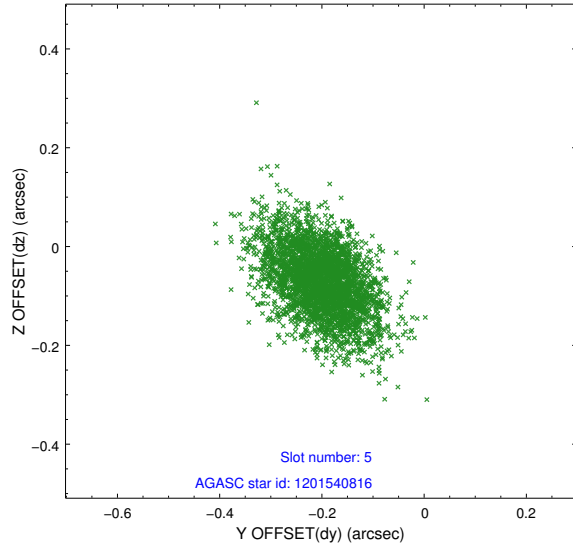
2.4.1 Slot 3



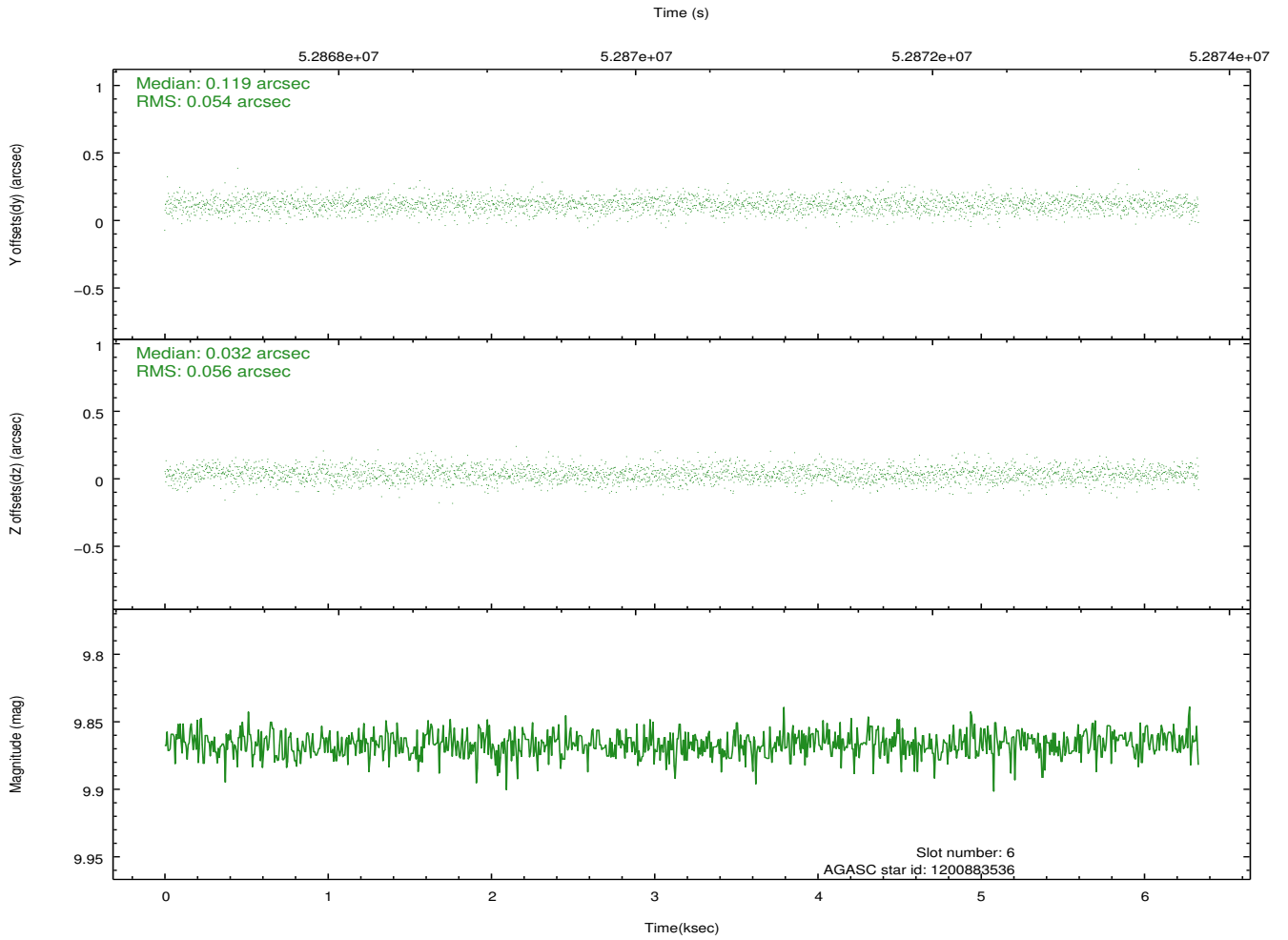
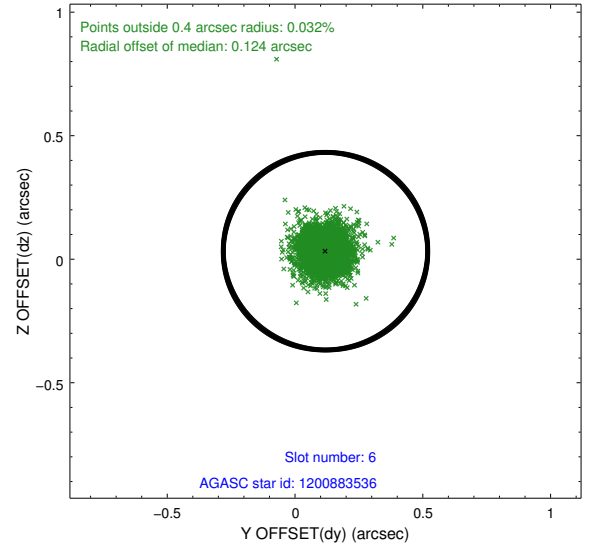
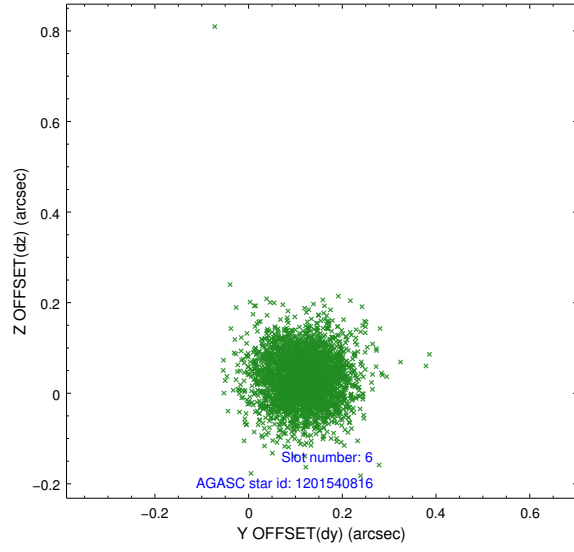
2.4.2 Slot 4



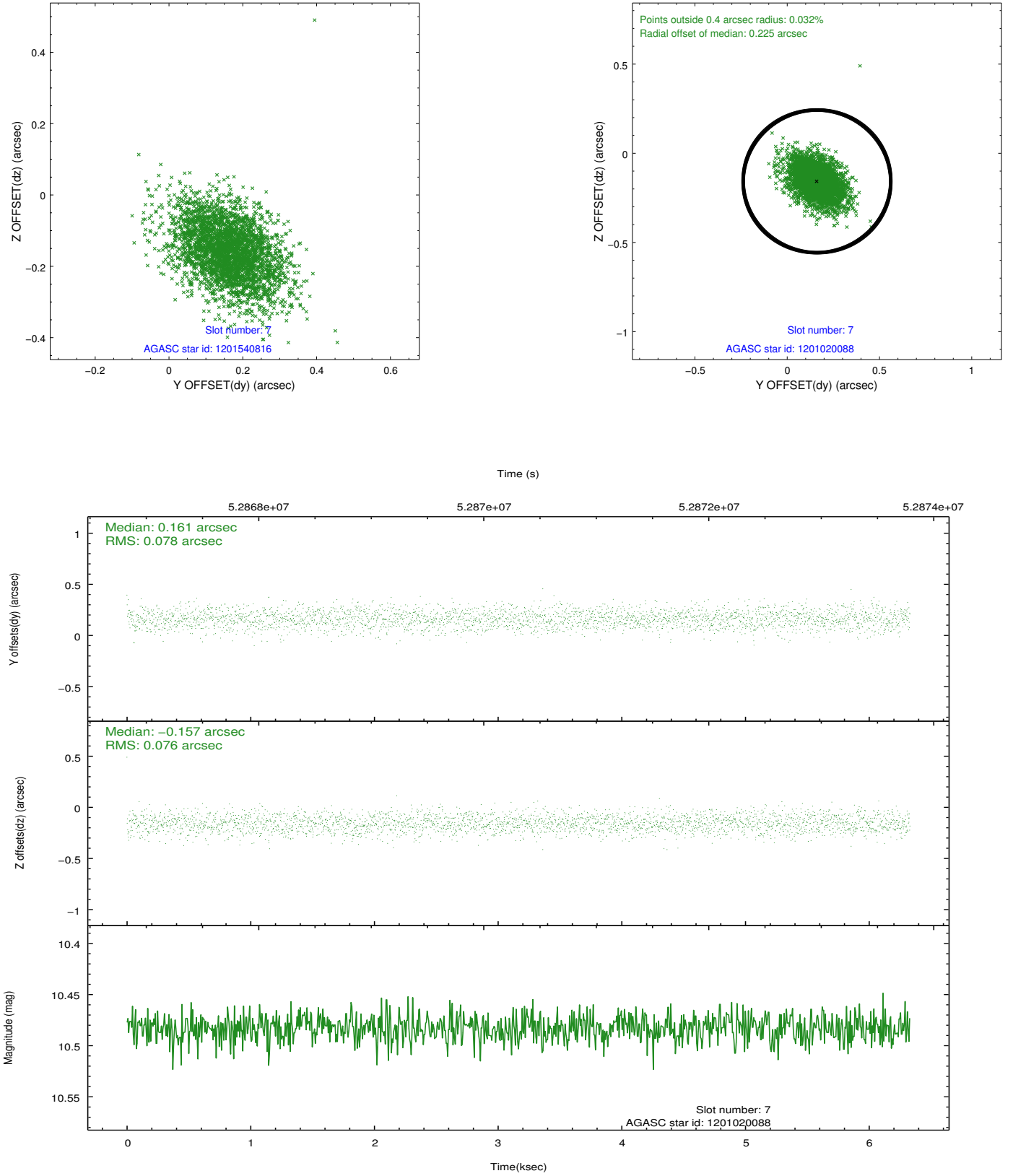
2.4.3 Slot 5



2.4.4 Slot 6

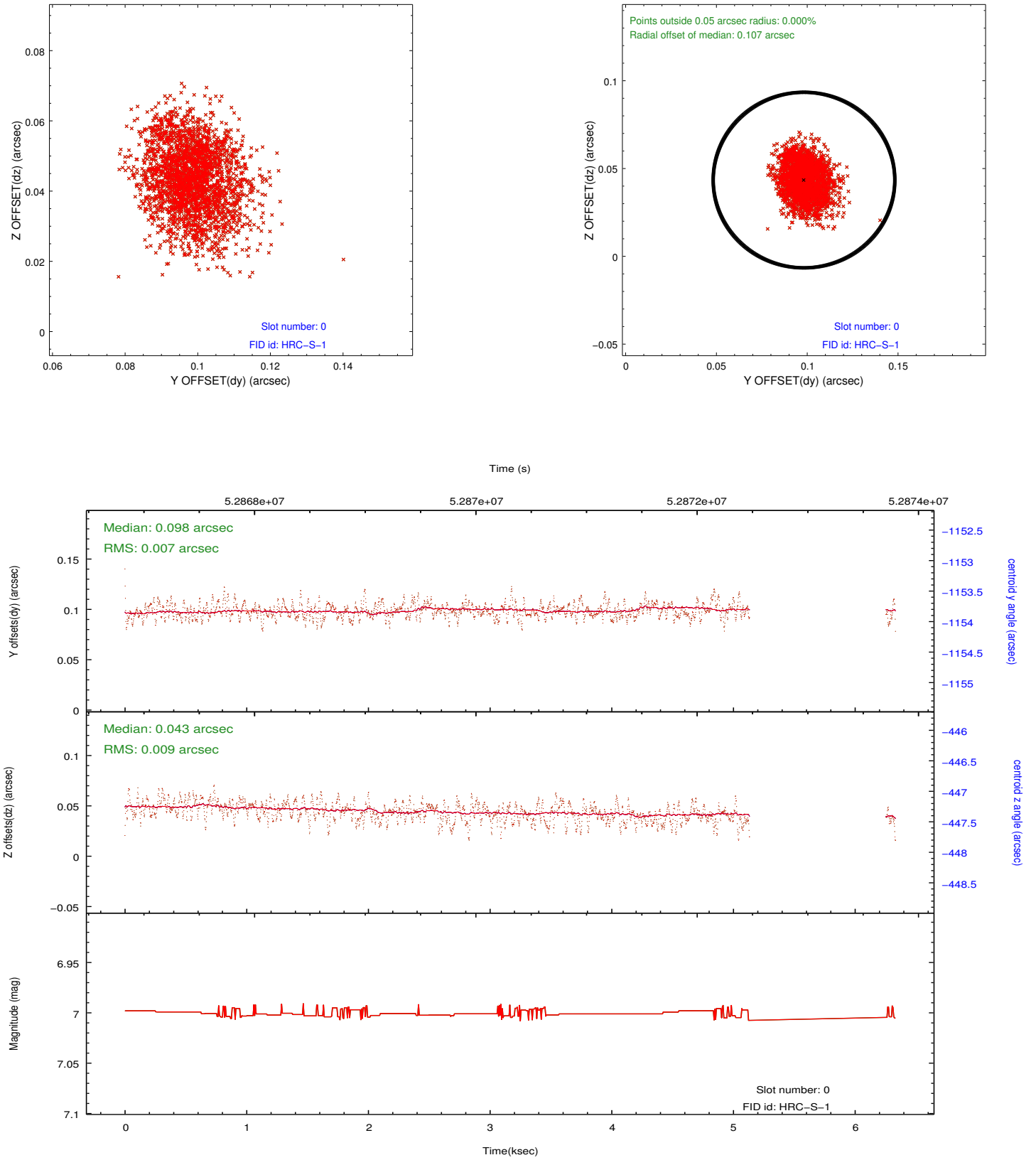


2.4.5 Slot 7

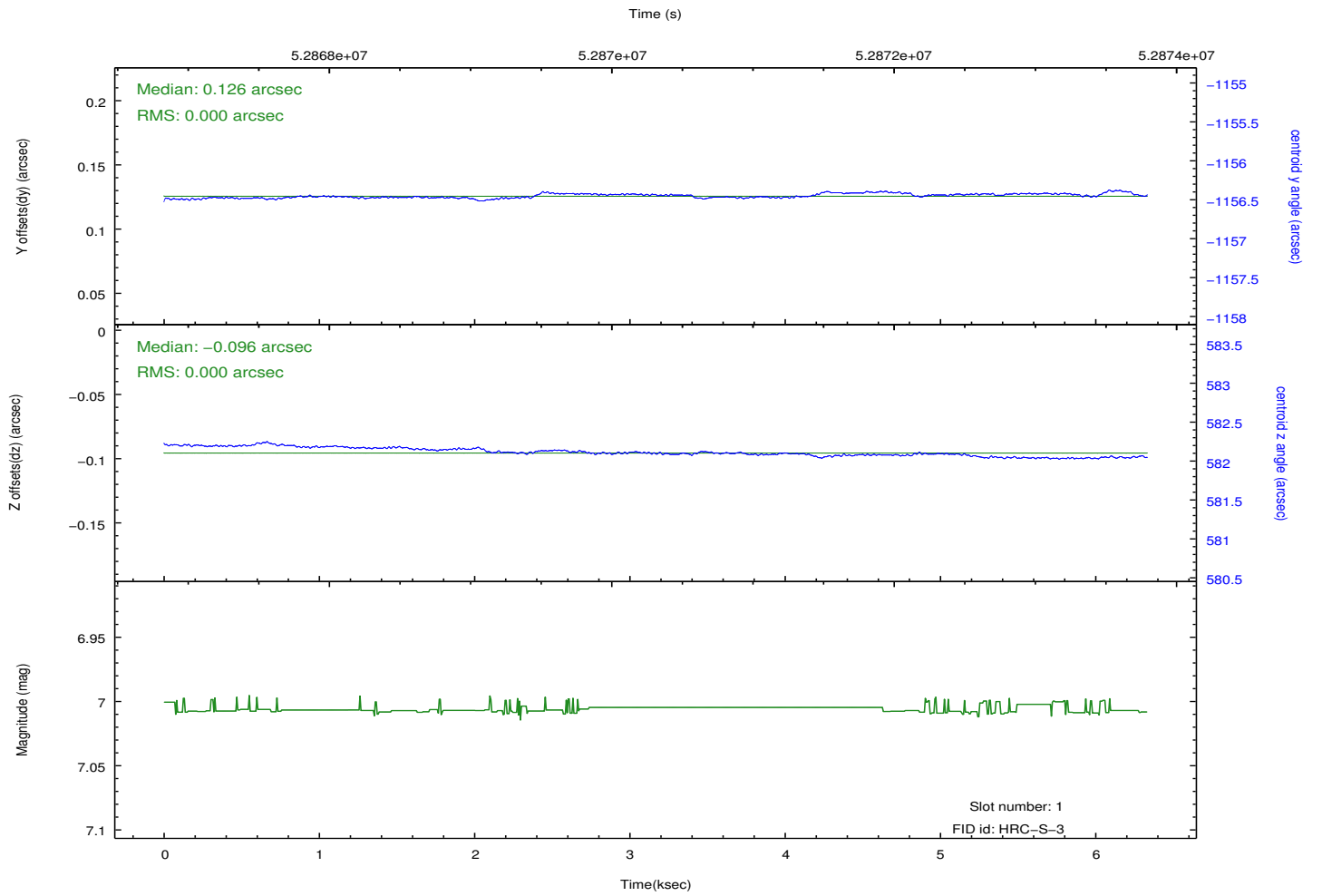
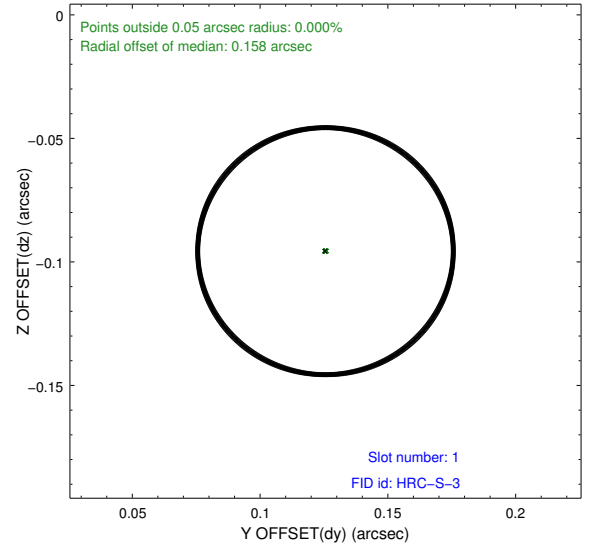
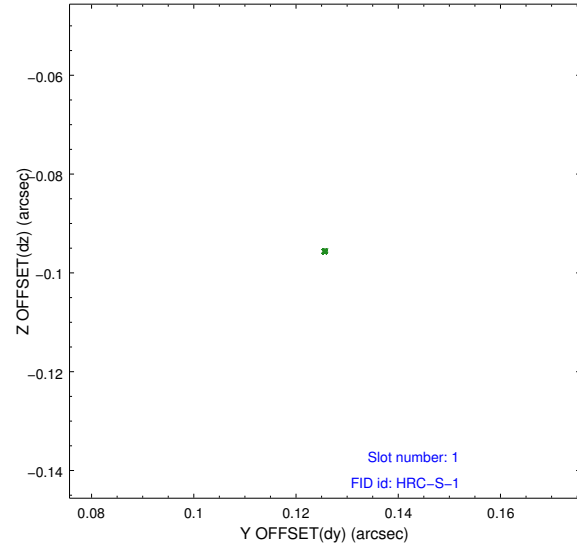


2.5 FID Slots

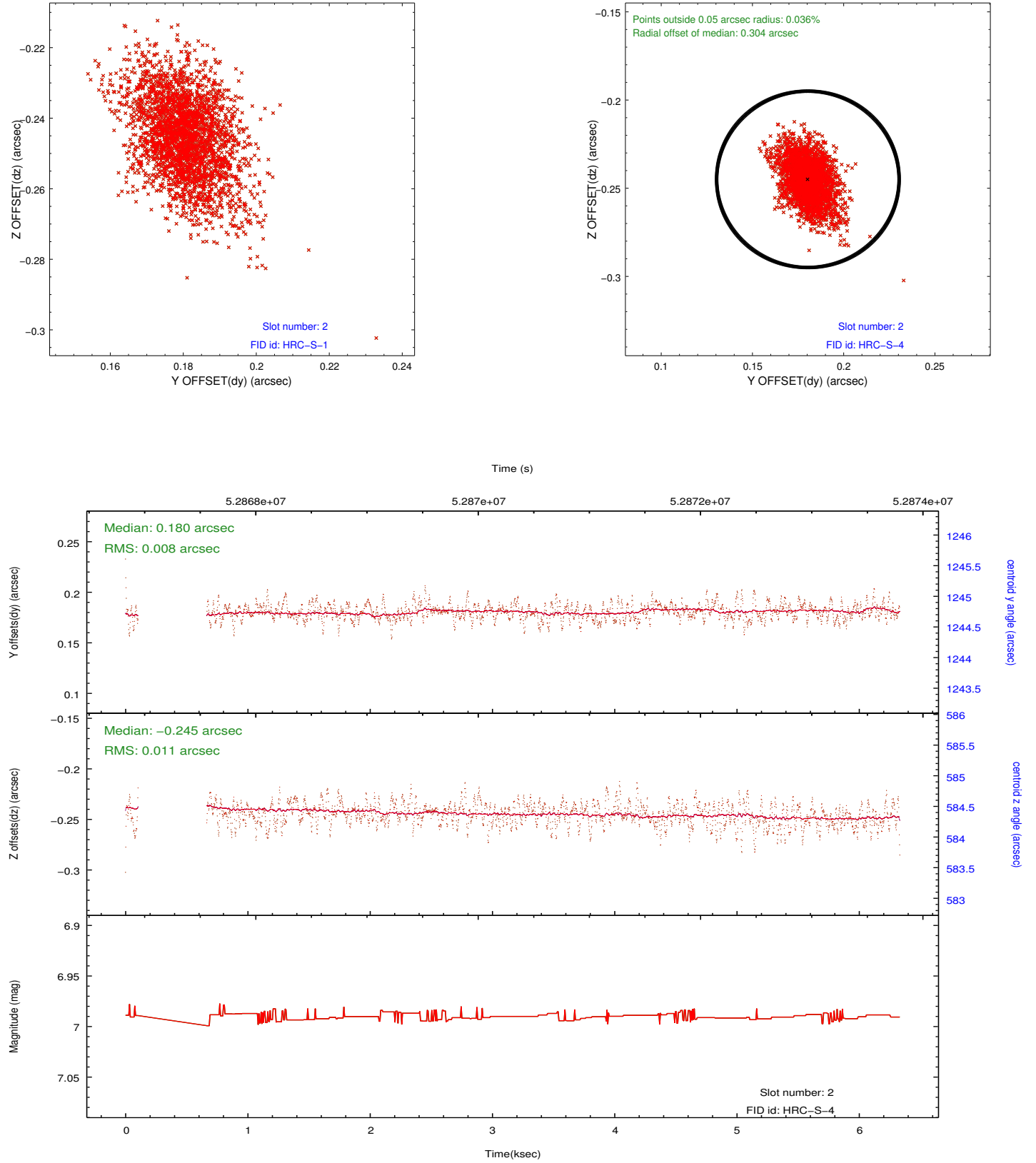
2.5.1 Slot 0



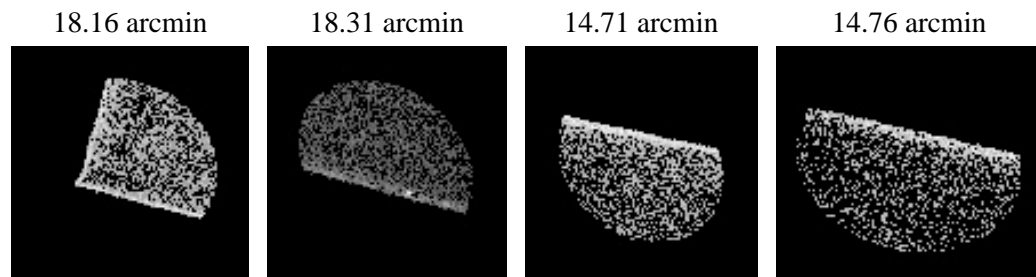
2.5.2 Slot 1



2.5.3 Slot 2



3 Point Sources



A Summary

A.1 Status

V&V Scientist	Beth Sundheim
V&V Date (YYYY-MM-DD)	2010.02.16
V&V Edition	1
V&V Disposition and Status	OK
V&V Charge Time	4.801

A.2 Comments

Window preference met.

The fid lights in slots 0 and 2 were removed from the aspect solution due to poor data quality. The aspect solution is not expected to be degraded by removing these slots.

Charge time remains at previous value of 4.801 ksec, although with the current processing the charge time would have been 6.232 ksec.