

V&V Reference Report

L2 ASCDS Version : 8.4.5

Observation 622 - L2 Version 4
Chandra X-Ray Center

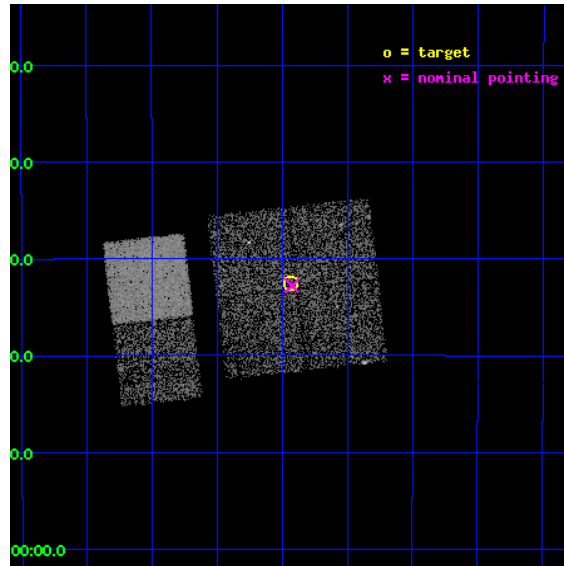
L2 Processing Date : Aug 30 2012

Contents

1	Front	2
2	OBI	3
2.1	OBI	3
2.1.1	Images	3
2.1.2	Bias	3
2.1.3	Parameters	4
2.1.4	Events	4
2.2	Compared Parameters	5
2.3	Aspect	6
2.4	Star Slots	9
2.4.1	Slot 3	9
2.4.2	Slot 4	10
2.4.3	Slot 5	11
2.4.4	Slot 6	12
2.4.5	Slot 7	13
2.5	FID Slots	14
2.5.1	Slot 0	14
2.5.2	Slot 1	15
2.5.3	Slot 2	16
A	Summary	17
A.1	Status	17
A.2	Comments	17

1 Front

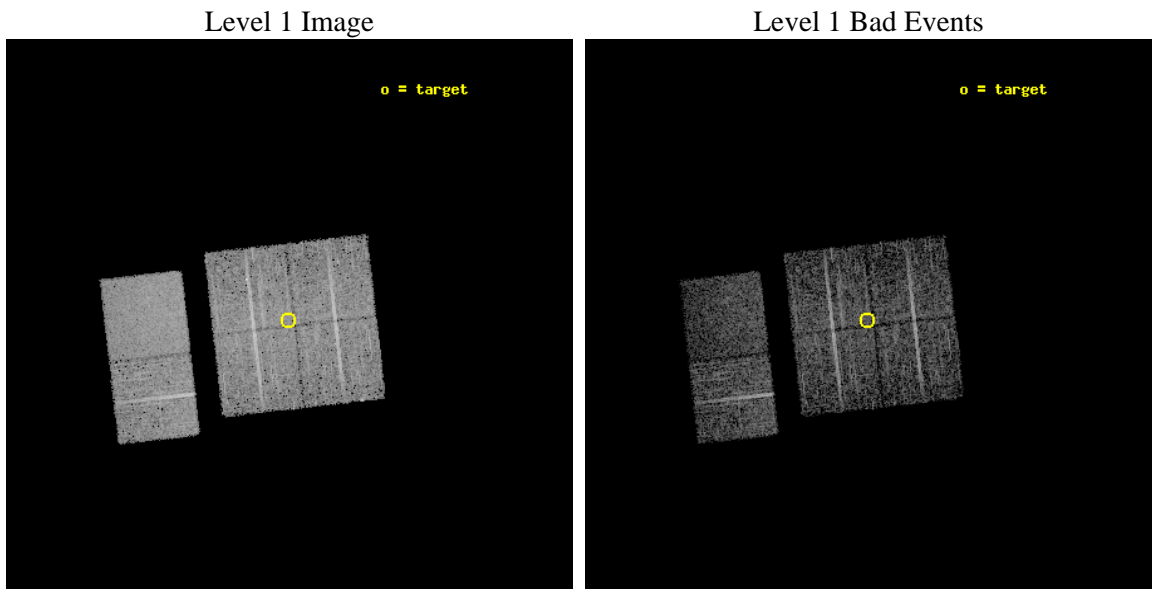
seq_num	200047	Sequence number
obs_id	622	Observation id
title	X-RAYS FROM THE RHO OPHIUCHI YOUNG STAR CLUSTER	Proposal title
observer	Dr. Thierry Montmerle	Principal investigator
object	OPHIUCHI MOSAIC #10	Source name
dtcycle	0	
cycle	P	events from which exps? Prim/Second/Both
ra_targ	247.109167	Observer's specified target RA [deg]
dec_targ	-24.5425	Observer's specified target Dec [deg]
ra_nom	247.10654395098	Nominal RA [deg]
dec_nom	-24.54684400891	Nominal Dec [deg]
roll_nom	263.48086846476	Nominal Roll [deg]
revision	4	Processing version of data
ontime	4873.600004524	Sum of GTIs [s]
livetime	4811.8875467371	Livetime [s]
ontime0	4873.600004524	Sum of GTIs [s]
ontime1	4873.600004524	Sum of GTIs [s]
ontime2	4873.600004524	Sum of GTIs [s]
ontime3	4873.600004524	Sum of GTIs [s]
ontime6	4873.600004524	Sum of GTIs [s]
ontime7	4873.600004524	Sum of GTIs [s]
l2events	31554	Number of level 2 events



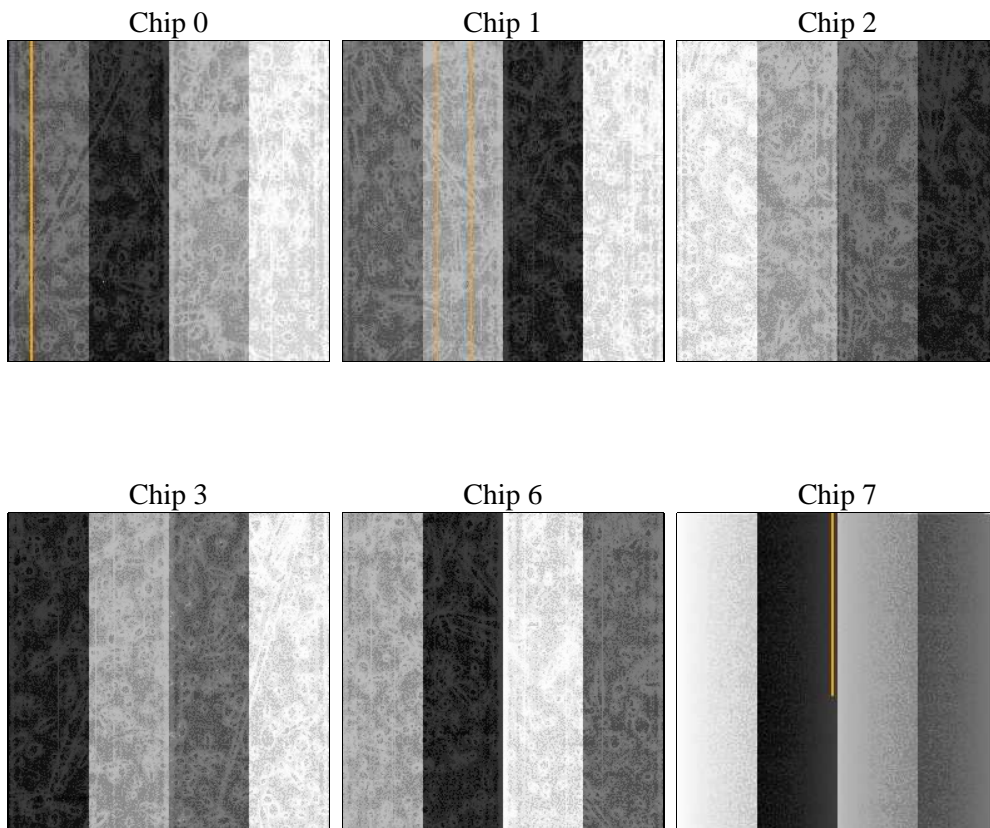
2 OBI

2.1 OBI

2.1.1 Images



2.1.2 Bias



2.1.3 Parameters

obi_num	0	Obi number	sched_exp_time	4725.000000	[s] Scheduled observation exposure time
ascdsver	8.4.5	Processing system revision	ontime	4873.600004524	Sum of GTIs [s]
caldsver	4.5.1.1	 	ontime0	4873.600004524	Sum of GTIs [s]
date	2012-08-30T03:37:28	Date and time of file creation	ontime1	4873.600004524	Sum of GTIs [s]
revision	4	Processing version of data	ontime2	4873.600004524	Sum of GTIs [s]
			ontime3	4873.600004524	Sum of GTIs [s]
			ontime6	4873.600004524	Sum of GTIs [s]
			ontime7	4873.600004524	Sum of GTIs [s]
			l1events	201767	Number of level 1 events

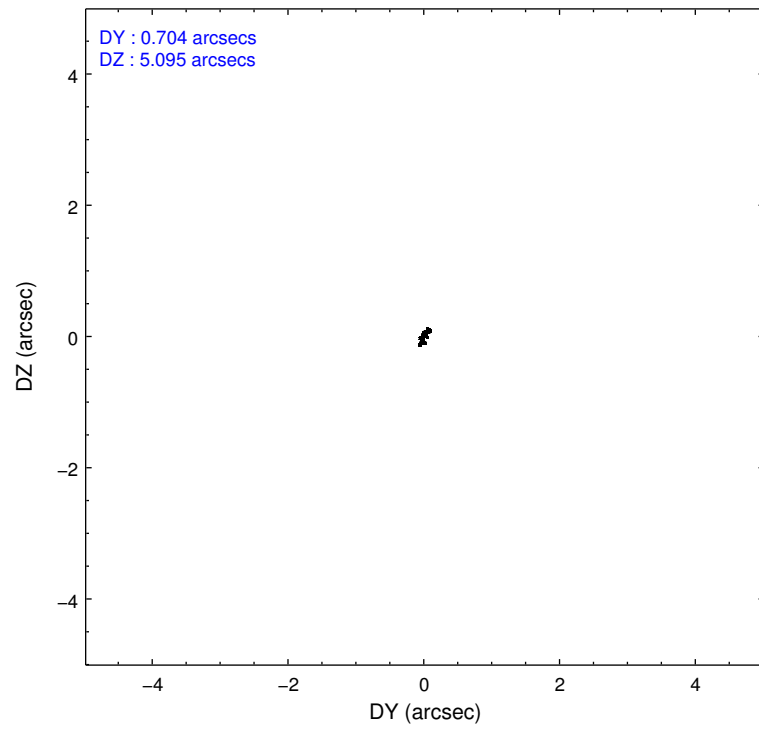
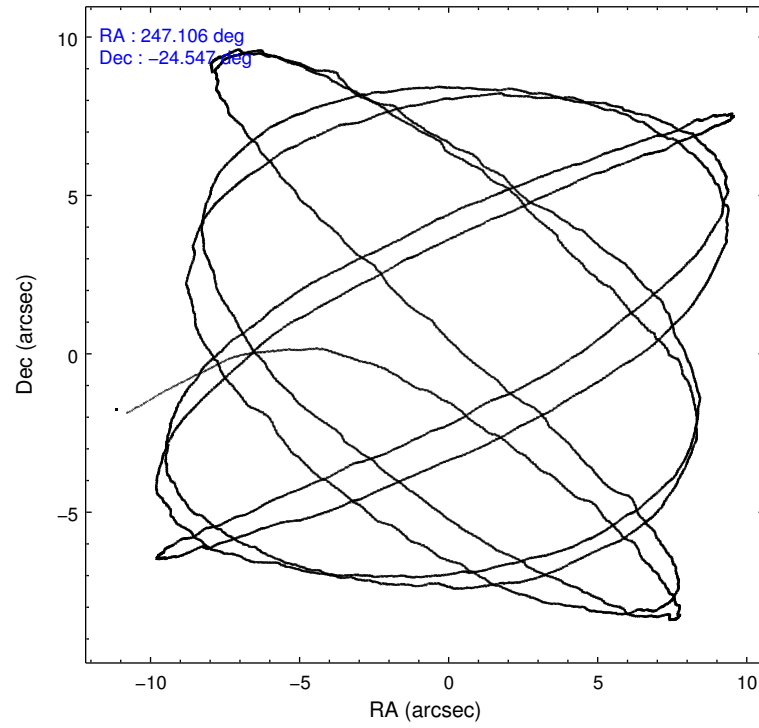
2.1.4 Events

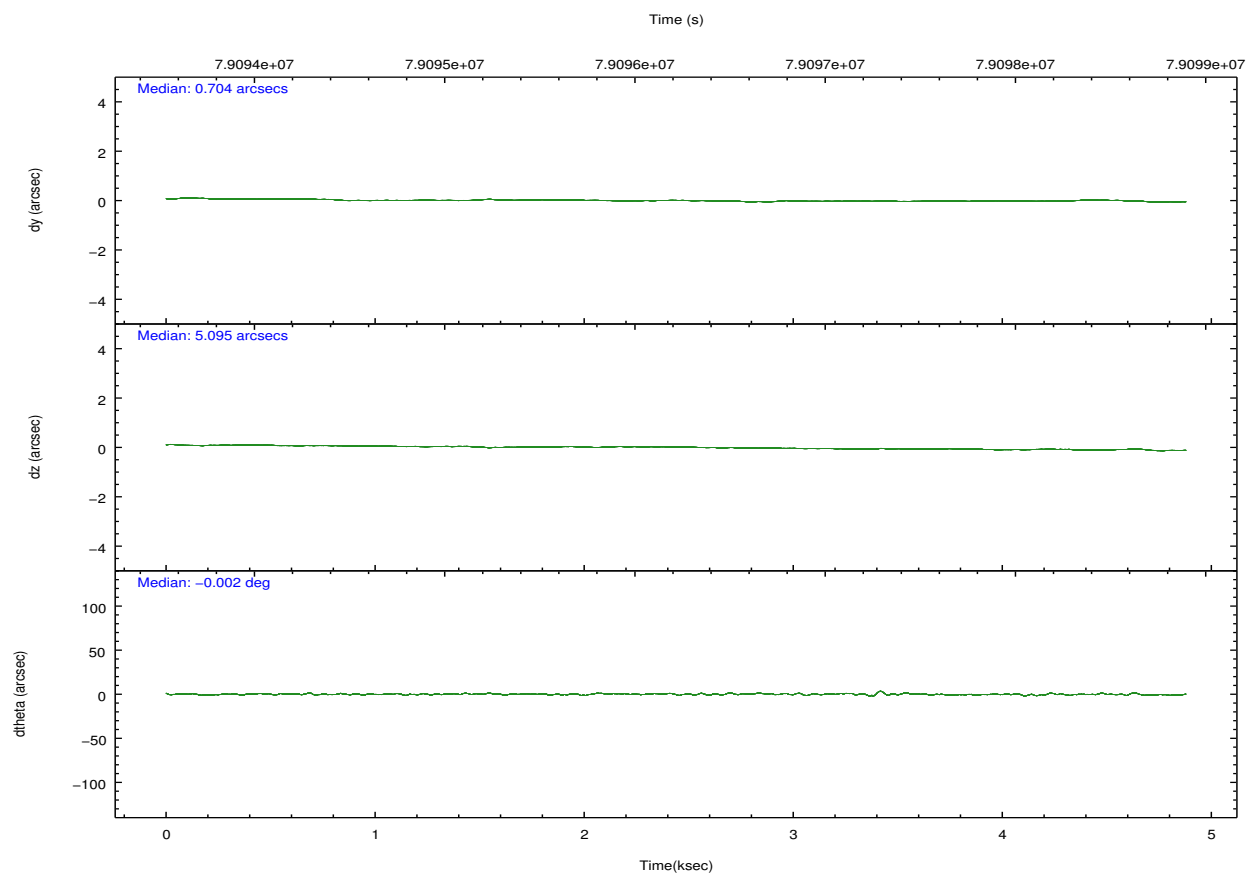
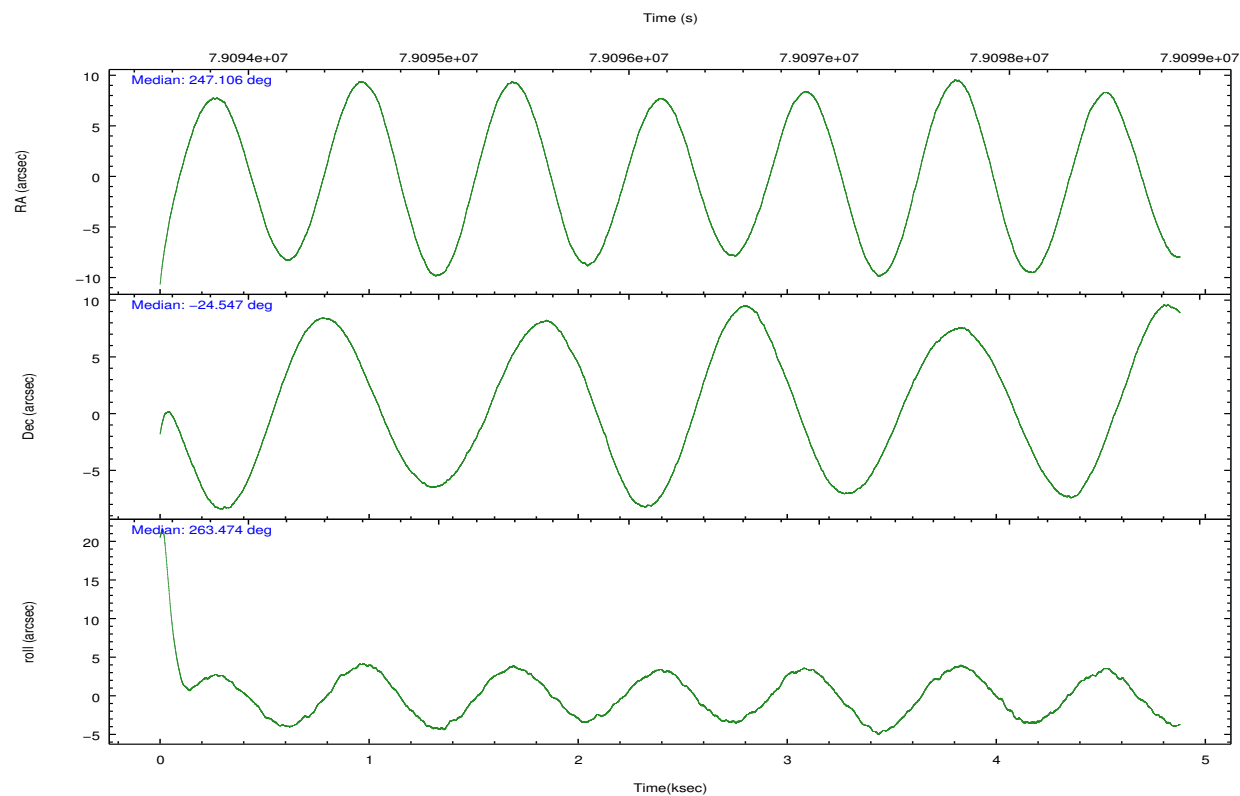
	ccd 0	ccd 1	ccd 2	ccd 3	ccd 6	ccd 7		ccd 0	ccd 1	ccd 2	ccd 3	ccd 6	ccd 7
level 1 events	30551	30293	32690	34110	34866	39257	grade 0 events	1690	1660	1415	2048	1422	1735
rejected events	26825	26416	29339	30150	31451	22860		5%	5%	4%	6%	4%	4%
rejected %	87%	87%	89%	88%	90%	58%	grade 1 events	21	17	14	19	14	37
								0%	0%	0%	0%	0%	0%
							grade 2 events	800	749	739	665	701	3336
								2%	2%	2%	1%	2%	8%
							grade 3 events	374	414	348	358	380	1506
								1%	1%	1%	1%	1%	3%
							grade 4 events	355	414	336	361	349	1505
								1%	1%	1%	1%	1%	3%
							grade 5 events	1071	1159	997	1114	1297	3760
								3%	3%	3%	3%	3%	9%
							grade 6 events	623	730	599	614	658	8861
								2%	2%	1%	1%	1%	22%
							grade 7 events	25617	25150	28242	28931	30045	18517
								83%	83%	86%	84%	86%	47%

2.2 Compared Parameters

Parameter	Planned	Actual	Parameter	Planned	Actual
Instrument	ACIS	ACIS	Obspar format version number	7	7
Detector	ACIS-012367	ACIS-012367	Obspar file type	PREDICTED	ACTUAL
Grating	NONE	NONE	Obspar update status	NONE	UPDATED
Data mode	FAINT	FAINT	Number of optional ACIS chips dropped	0	0
Observation mode	POINTING	POINTING	On-chip summing requested	N	N
[deg] Pointing RA	247.094549	247.1065439509763	Subarray requested	NONE	NONE
[deg] Pointing Dec	-24.521467	-24.54684400891018	Alternating exposures requested	N	N
[deg] Pointing Roll	263.267134	263.4808684647631	[s] Primary exposure time	0.000000	3.2
[mm] SIM focus pos	-0.782348	-0.7809083437167272			
[mm] SIM defocus	0	0.001439871863259334			
[mm] SIM translation stage pos	-233.592463	-233.5874344608287			
[mm] SIM translation stage offset	0	-0.005018542100998502			
[s] Observation start time (MET)	79093930.184000	79092809.025664			
Observation start date	2000-07-04T10:31:06	2000-07-04T10:13:29			
[s] Observation end time (MET)	79098655.184000	79098910.33838899			
Observation end date	2000-07-04T11:49:51	2000-07-04T11:55:10			
Read mode	TIMED	TIMED			

2.3 Aspect



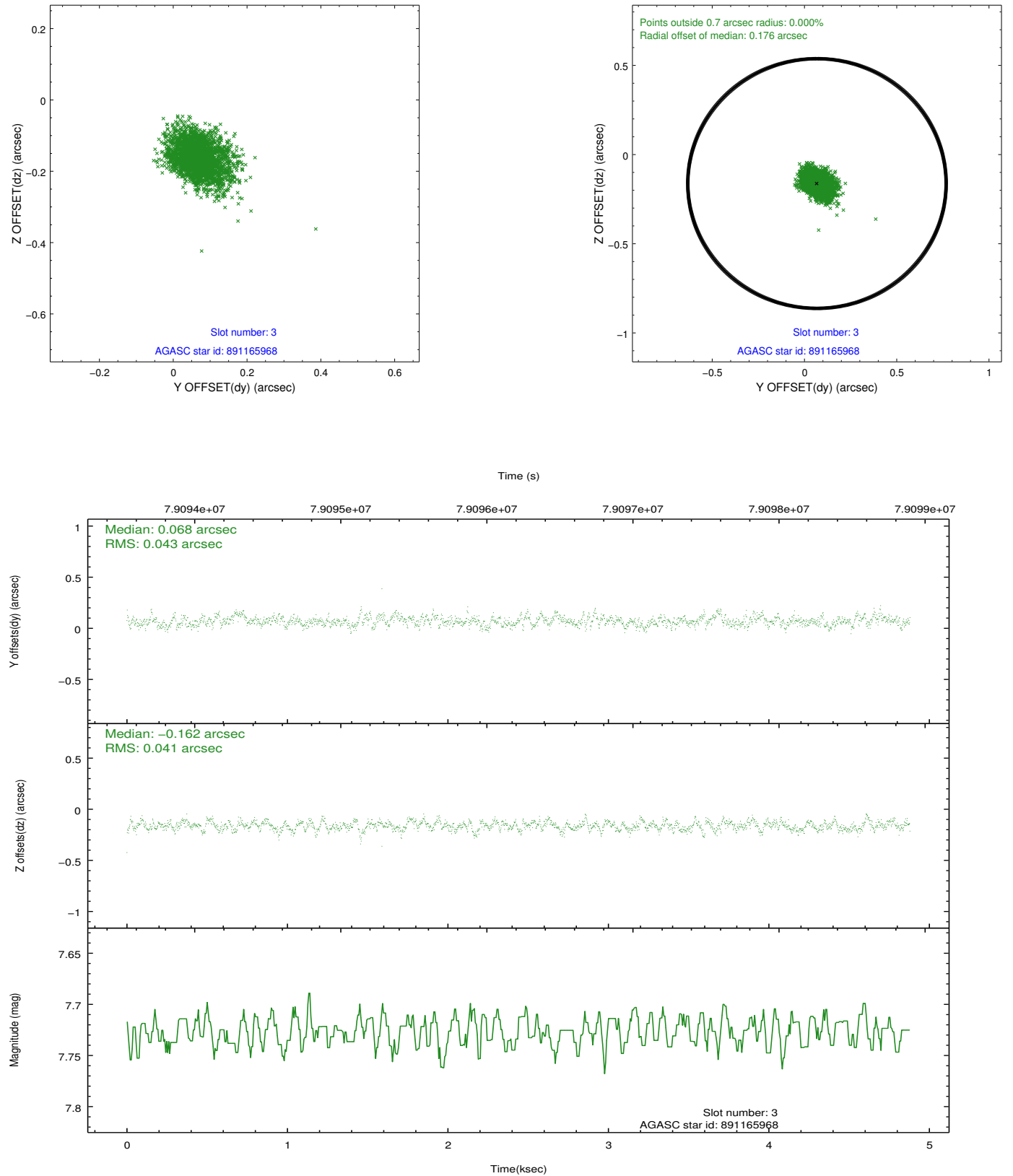


Slot Statistics

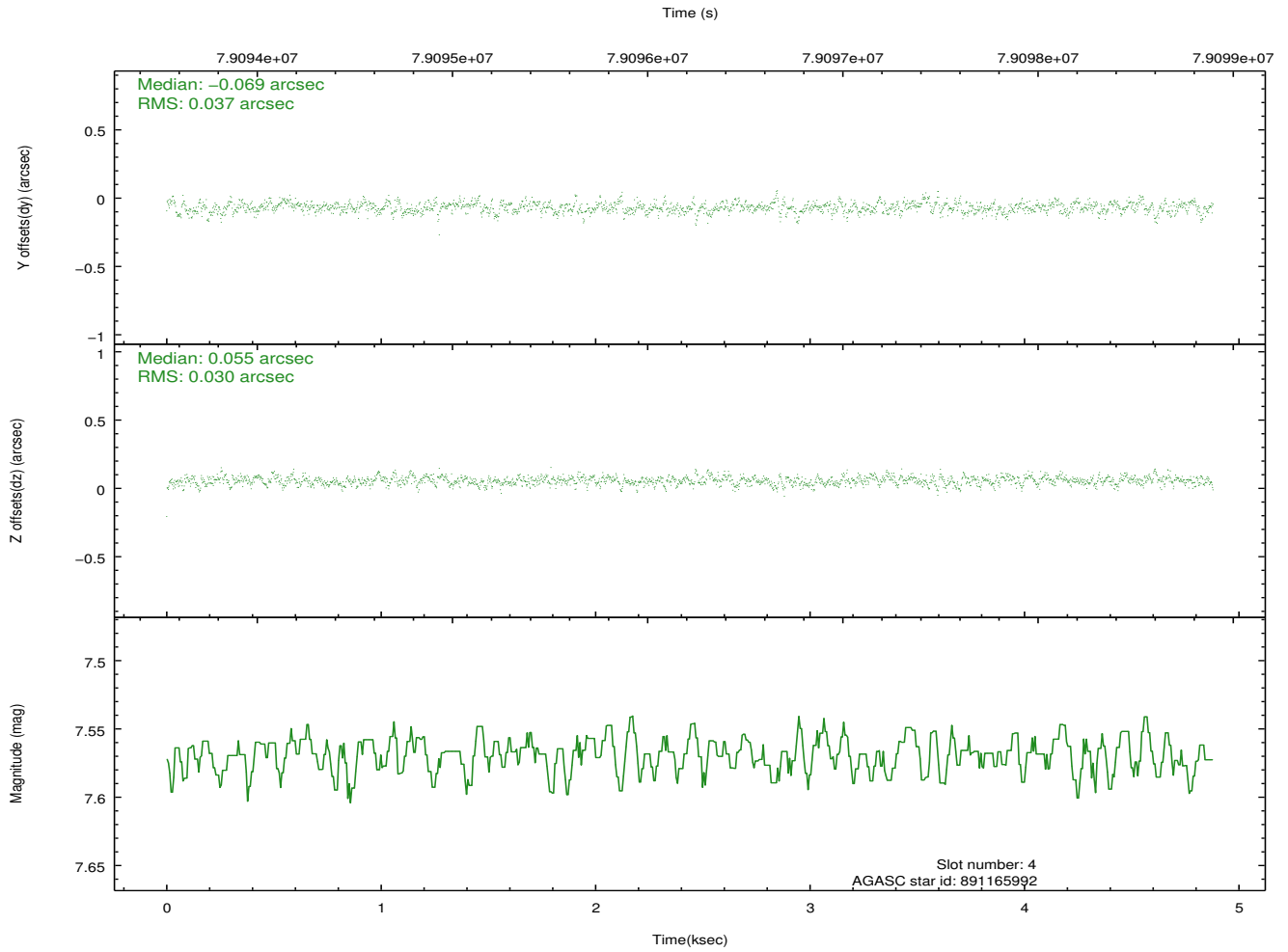
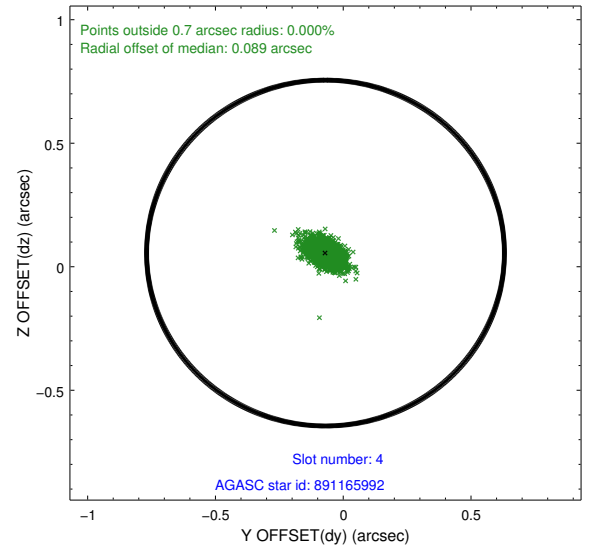
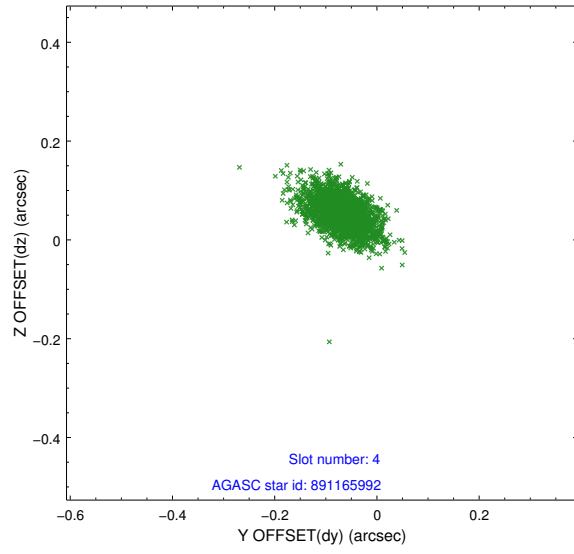
slot	status	id	mag	n_pts	med_dy	med_dz	dr1	dr2	ra	dec	mean_y	mean_z
0	FID	ACIS-I-2	7.15	1190	-0.028	-0.025	0.009	0.015	0.000000	0.000000	-755.05	-834.82
1	FID	ACIS-I-4	7.19	1190	-0.046	0.031	0.006	0.011	0.000000	0.000000	2158.42	1070.79
2	FID	ACIS-I-5	7.23	1190	-0.028	0.063	0.009	0.015	0.000000	0.000000	-1807.27	1070.09
3	GUIDE	891165968	7.73	2379	0.068	-0.162	0.062	0.106	247.104842	-24.750274	813.14	130.17
4	GUIDE	891165992	7.57	2381	-0.069	0.055	0.048	0.086	247.496655	-25.147789	2086.59	1566.62
5	GUIDE	891031768	7.58	2381	-0.163	-0.049	0.061	0.101	246.351325	-24.465712	92.68	-2440.43
6	GUIDE	891165976	8.20	2381	0.033	0.071	0.066	0.107	247.477470	-24.979460	1491.53	1433.99
7	GUIDE	891028200	9.67	2377	0.131	0.090	0.117	0.183	246.880837	-25.150608	2331.30	-424.83

2.4 Star Slots

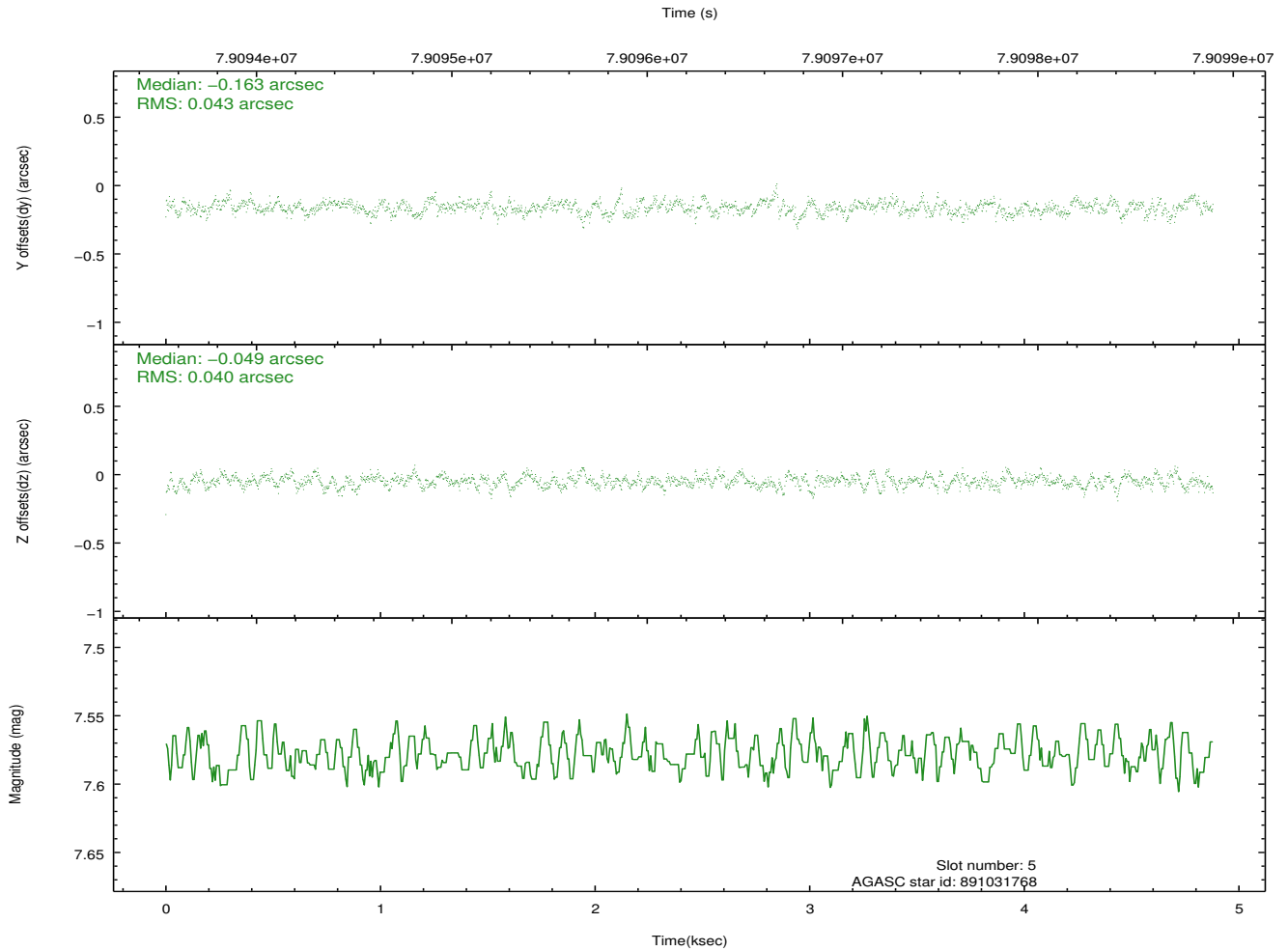
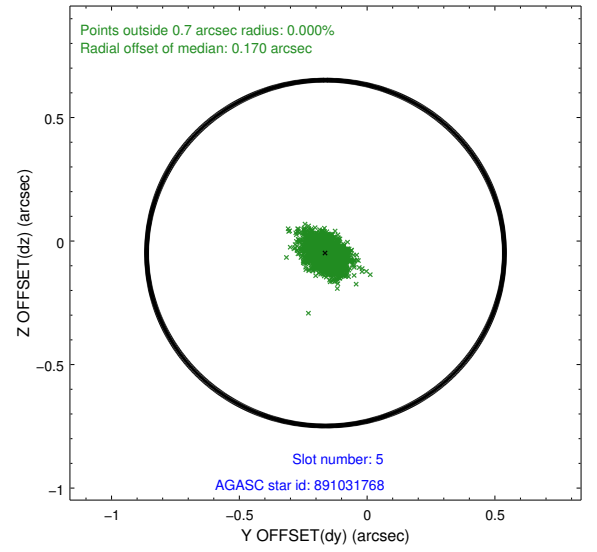
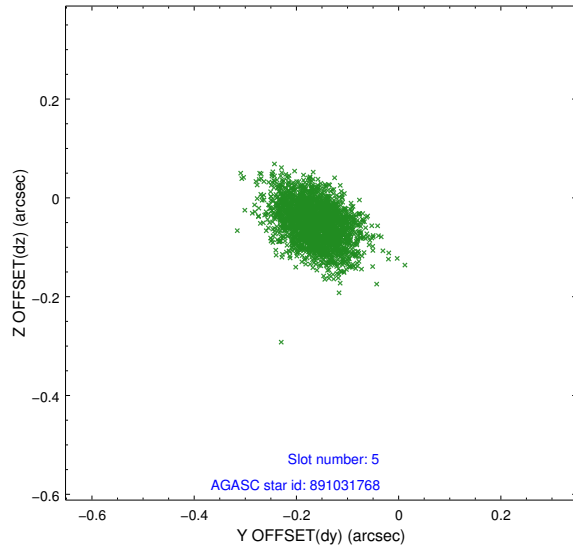
2.4.1 Slot 3



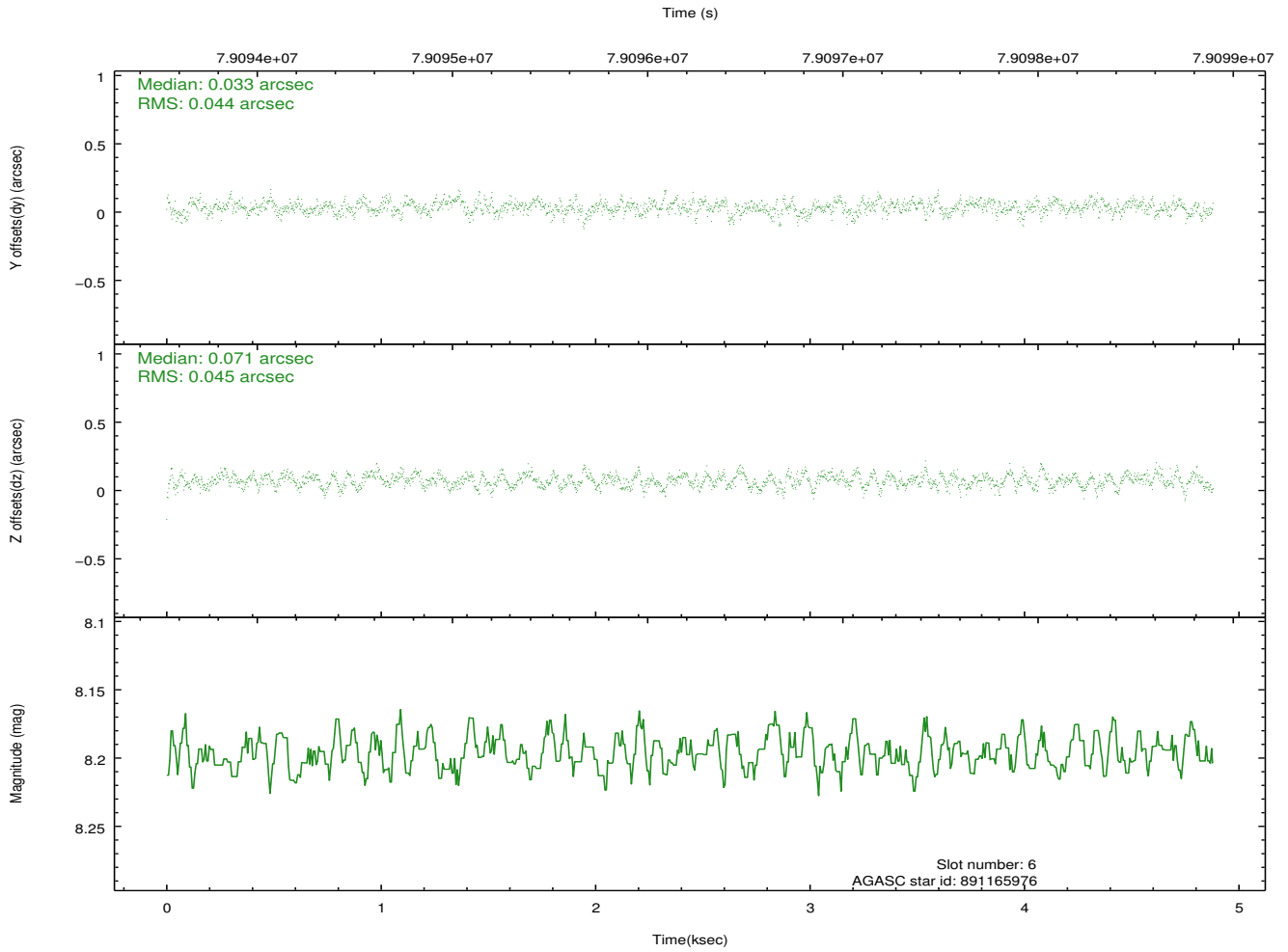
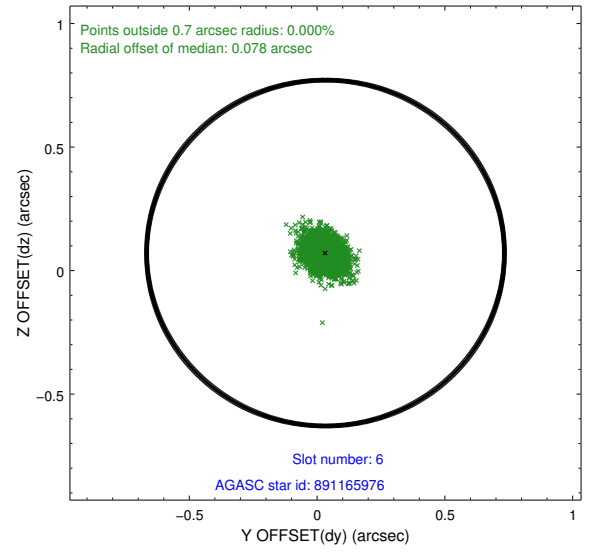
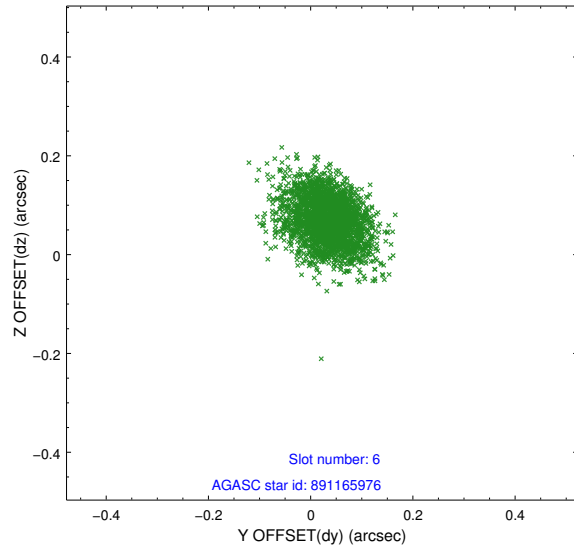
2.4.2 Slot 4



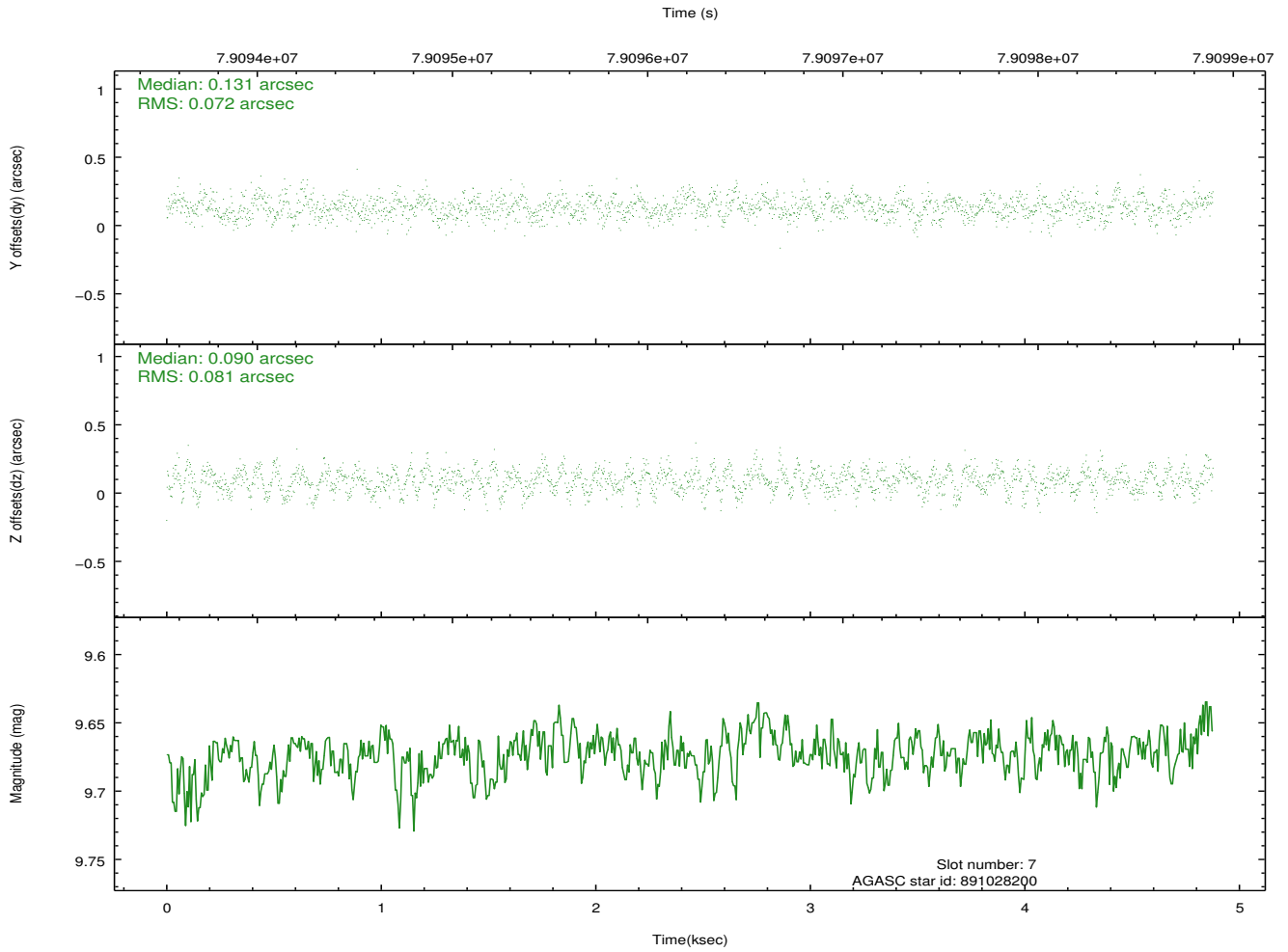
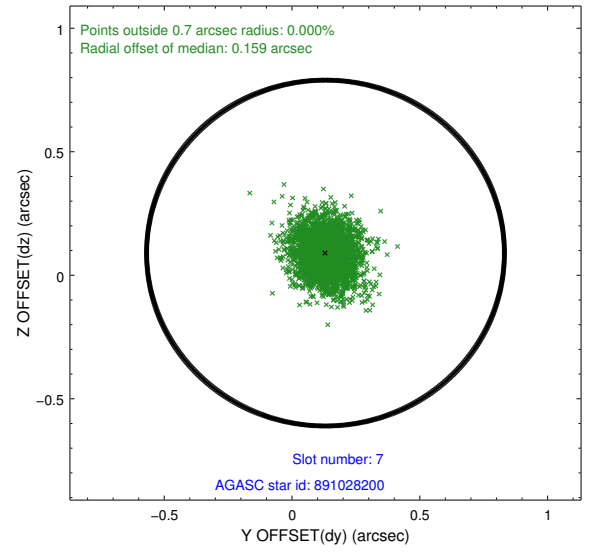
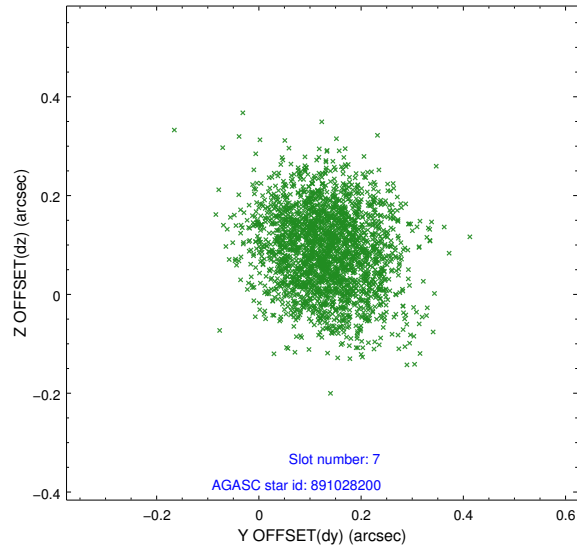
2.4.3 Slot 5



2.4.4 Slot 6

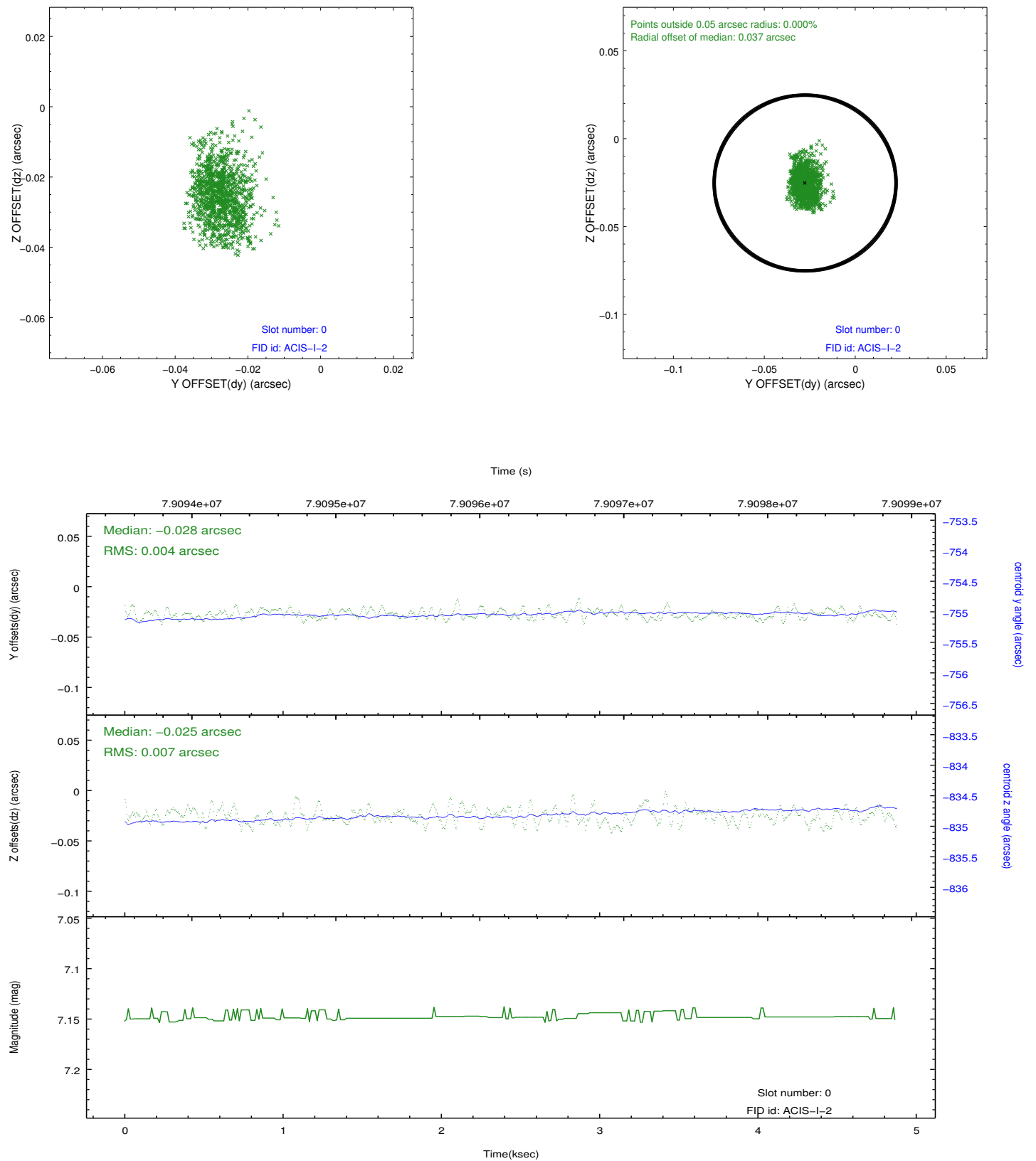


2.4.5 Slot 7

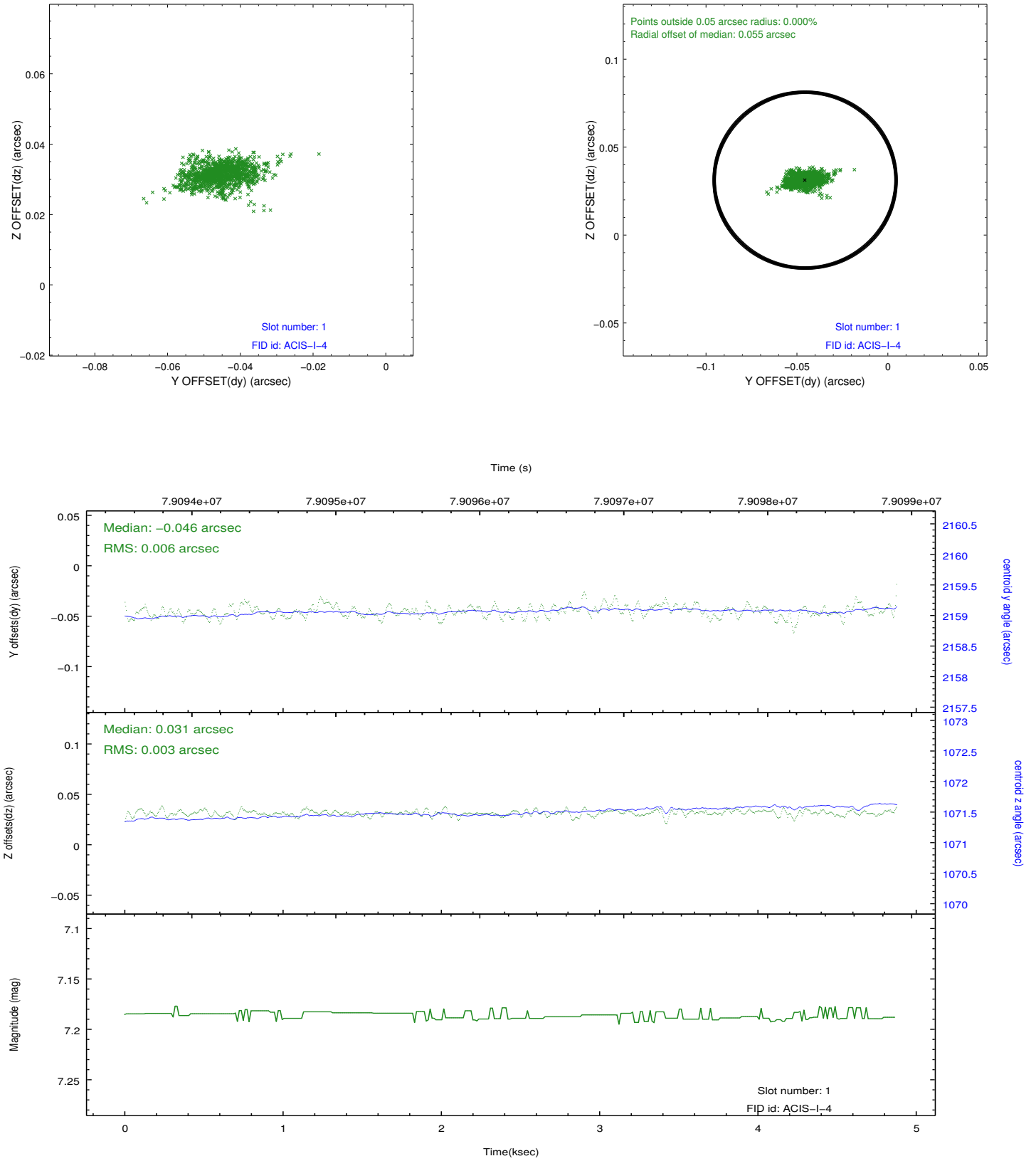


2.5 FID Slots

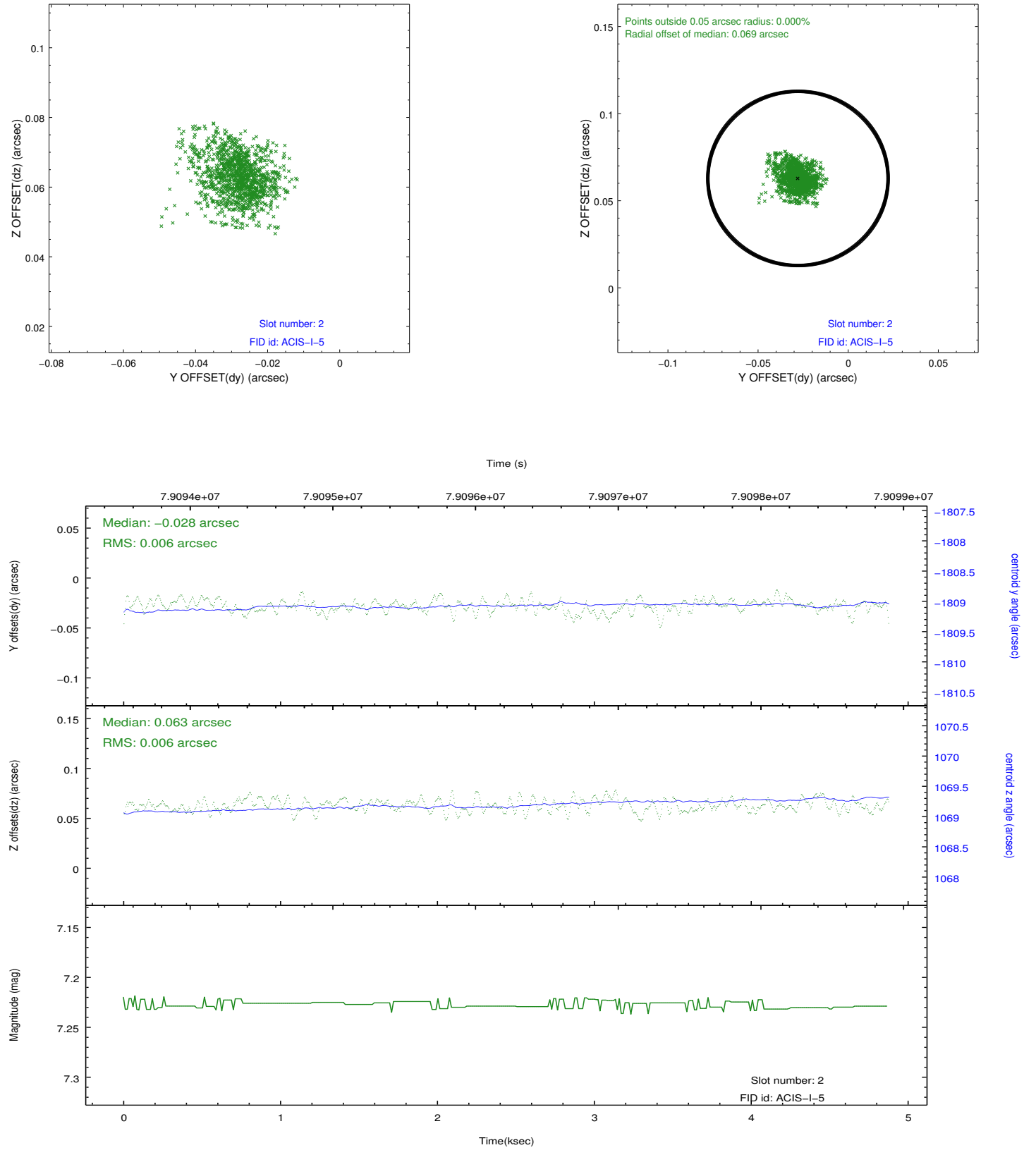
2.5.1 Slot 0



2.5.2 Slot 1



2.5.3 Slot 2



A Summary

A.1 Status

V&V Scientist	Beth Sundheim
V&V Date (YYYY-MM-DD)	2012.09.04
V&V Edition	1
V&V Disposition and Status	OK
V&V Charge Time	4.873

A.2 Comments