

V&V Reference Report

L2 ASCDS Version : 8.4.5

Observation 62072 - L2 Version 5
Chandra X-Ray Center

L2 Processing Date : Aug 25 2012

Contents

1	Front	2
2	OBI	3
2.1	OBI	3
2.1.1	Images	3
2.1.2	Bias	3
2.1.3	Parameters	4
2.1.4	Events	4
2.2	Compared Parameters	5
2.3	Star Slots	6
2.4	FID Slots	6
A	Summary	7
A.1	Status	7
A.2	Comments	7

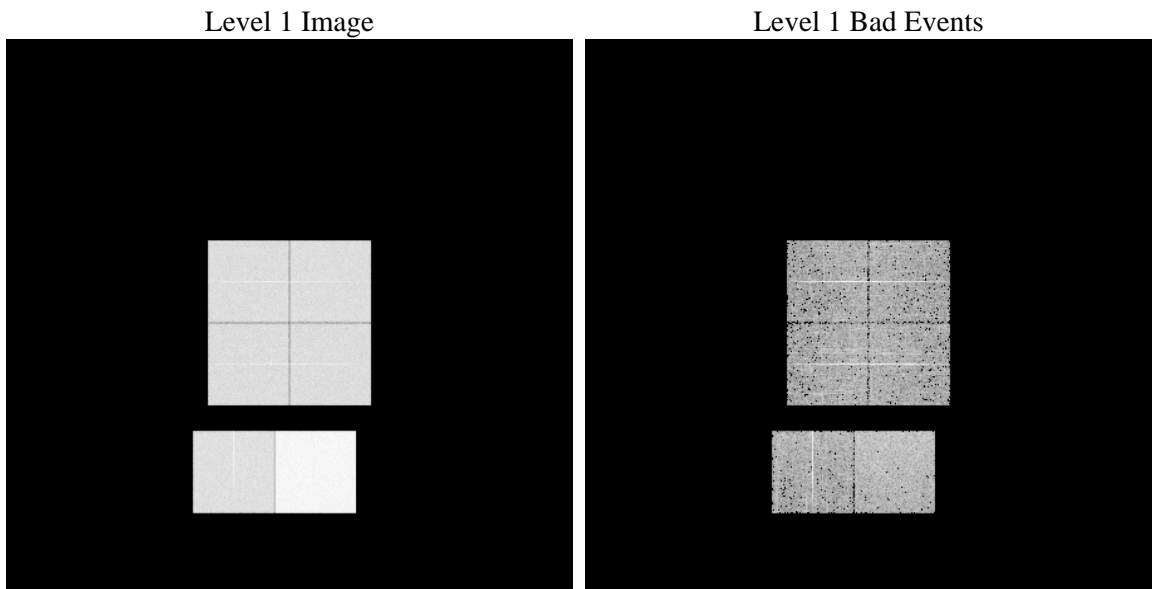
1 Front

seq_num	 	Sequence number
obs_id	62072	Observation id
title	ACIS-012367 diagnostics	Proposal title
observer	CHANDRA engineering request/realtime commanding	Principal investig
object	 	Source name
dtcycle	0	
cycle	P	events from which exps? Prim/Second/Both
ra_targ	0.0	Observer's specified target RA [deg]
dec_targ	0.0	Observer's specified target Dec [deg]
ra_nom	350.01868005189	Nominal RA [deg]
dec_nom	75.028394949268	Nominal Dec [deg]
roll_nom	48.07546088381	Nominal Roll [deg]
revision	5	Processing version of data
ontime	5527.7445033044	Sum of GTIs [s]
livetime	5457.7488739954	Livetime [s]
ontime0	2255.7622484416	Sum of GTIs [s]
ontime1	2278.4495583028	Sum of GTIs [s]
ontime2	2168.254258424	Sum of GTIs [s]
ontime3	2181.2182687968	Sum of GTIs [s]
ontime6	2391.885898158	Sum of GTIs [s]
ontime7	5527.7445033044	Sum of GTIs [s]
l2events	1388108	Number of level 2 events

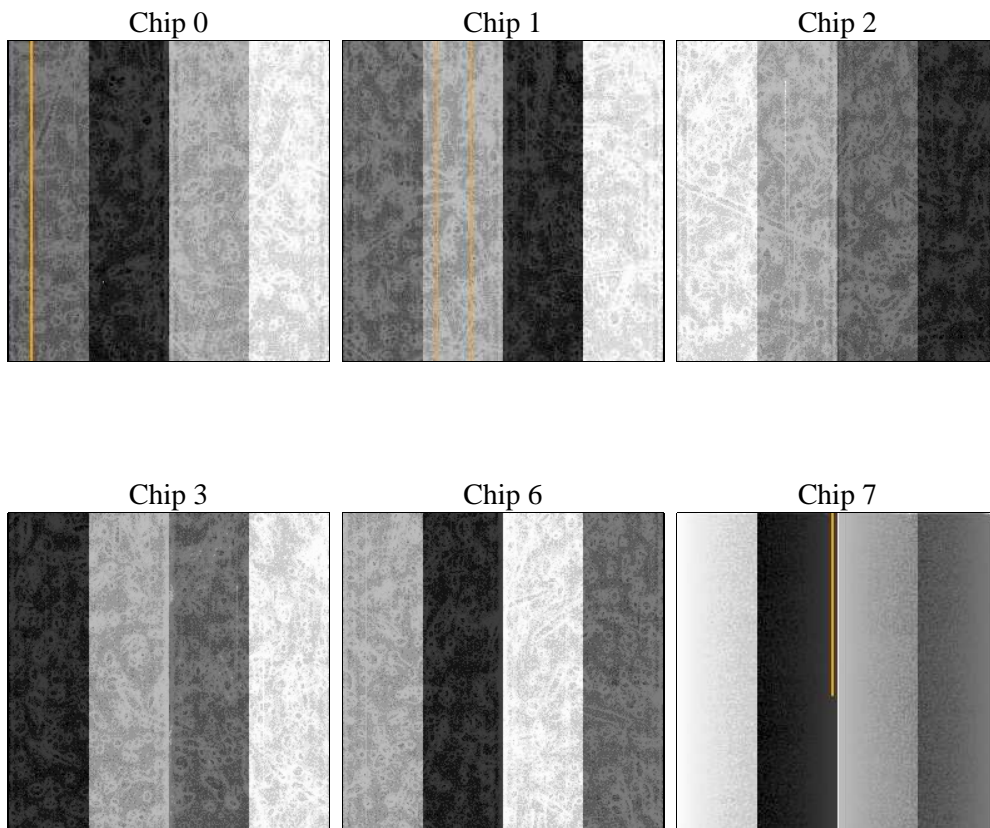
2 OBI

2.1 OBI

2.1.1 Images



2.1.2 Bias



2.1.3 Parameters

obi_num	0	Obi number	sched_exp_time	0.0	[s] Scheduled observation exposure time
ascdsver	8.4.5	Processing system revision	ontime	5527.7445033044	Sum of GTIs [s]
caldbver	4.5.1.1	 	ontime0	2255.7622484416	Sum of GTIs [s]
date	2012-08-26T00:08:33	Date and time of file creation	ontime1	2278.4495583028	Sum of GTIs [s]
revision	5	Processing version of data	ontime2	2168.254258424	Sum of GTIs [s]
			ontime3	2181.2182687968	Sum of GTIs [s]
			ontime6	2391.885898158	Sum of GTIs [s]
			ontime7	5527.7445033044	Sum of GTIs [s]
			l1events	1582614	Number of level 1 events

2.1.4 Events

	ccd 0	ccd 1	ccd 2	ccd 3	ccd 6	ccd 7		ccd 0	ccd 1	ccd 2	ccd 3	ccd 6	ccd 7
level 1 events	209841	211924	206706	207037	233099	514007	grade 0 events	104593	105815	102995	103424	115634	124284
rejected events	20560	20233	22055	21794	22060	30446		49%	49%	49%	49%	49%	24%
rejected %	9%	9%	10%	10%	9%	5%	grade 1 events	612	638	624	616	686	370
								0%	0%	0%	0%	0%	0%
							grade 2 events	32805	33828	32362	32278	36271	107551
								15%	15%	15%	15%	15%	20%
							grade 3 events	12223	12270	11705	11681	12764	49858
								5%	5%	5%	5%	5%	9%
							grade 4 events	11990	12208	11471	11811	12964	49235
								5%	5%	5%	5%	5%	9%
							grade 5 events	1549	1560	1483	1554	1792	6994
								0%	0%	0%	0%	0%	1%
							grade 6 events	27670	27570	26118	26049	33406	152633
								13%	13%	12%	12%	14%	29%
							grade 7 events	18399	18035	19948	19624	19582	23082
								8%	8%	9%	9%	8%	4%

2.2 Compared Parameters

Parameter	Planned	Actual	Parameter	Planned	Actual
Instrument	ACIS	ACIS	Obspar format version number	7	7
Detector	ACIS-012367	ACIS-012367	Obspar file type	PREDICTED	ACTUAL
Grating	NONE	NONE	Obspar update status	NONE	UPDATED
Data mode	FAINT	FAINT	On-chip summing requested	N	N
Observation mode	SECONDARY	SECONDARY	Subarray requested	NONE	NONE
[deg] Pointing RA	0	350.0186800518928	Alternating exposures requested	N	N
[deg] Pointing Dec	0	75.02839494926843	[s] Primary exposure time	0.000000	3.2
[deg] Pointing Roll	0.0	48.07546088380974			
[mm] SIM focus pos	-0.782348	-0.7809083437167272			
[mm] SIM defocus	0	0.7524282956875696			
[mm] SIM translation stage pos	-233.592463	250.4635187648994			
[mm] SIM translation stage offset	0	-0.007540371344731511			
[s] Observation start time (MET)	73141939.40000001	73141938.63173801			
Observation start date	2000-04-26T13:12:19	2000-04-26T13:12:18			
[s] Observation end time (MET)	73153062.70100001	73153061.932147			
Observation end date	2000-04-26T16:17:43	2000-04-26T16:17:41			
Read mode	TIMED	TIMED			

2.3 Star Slots

2.4 FID Slots

A Summary

A.1 Status

V&V Scientist	Jen Lauer
V&V Date (YYYY-MM-DD)	2012.08.28
V&V Edition	1
V&V Disposition and Status	OK
V&V Charge Time	5.5277445033044

A.2 Comments