

V&V Reference Report

L2 ASCDS Version : 8.4.5

Observation 62052 - L2 Version 5
Chandra X-Ray Center

L2 Processing Date : Aug 27 2012

Contents

1	Front	2
2	OBI	3
2.1	OBI	3
2.1.1	Images	3
2.1.2	Bias	3
2.1.3	Parameters	4
2.1.4	Events	4
2.2	Compared Parameters	5
2.3	Star Slots	6
2.4	FID Slots	6
A	Summary	7
A.1	Status	7
A.2	Comments	7

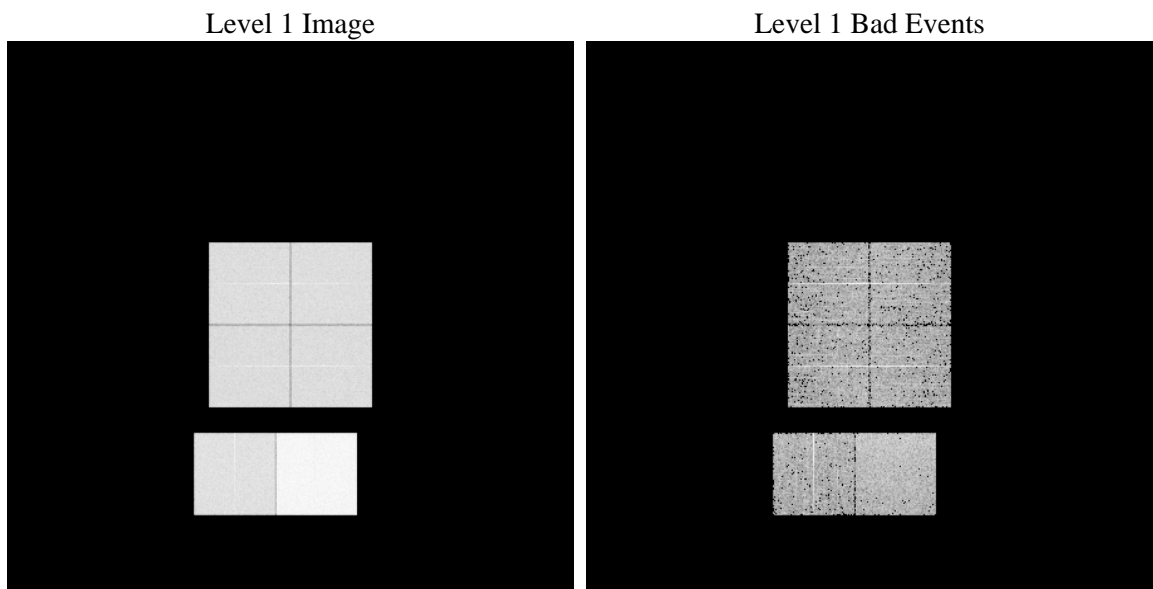
1 Front

seq_num	 	Sequence number
obs_id	62052	Observation id
title	ACIS-012367 diagnostics	Proposal title
observer	CHANDRA engineering request/realtime commanding	Principal investig
object	 	Source name
dtcycle	0	
cycle	P	events from which exps? Prim/Second/Both
ra_targ	0.0	Observer's specified target RA [deg]
dec_targ	0.0	Observer's specified target Dec [deg]
ra_nom	10.875908524372	Nominal RA [deg]
dec_nom	-58.245642237916	Nominal Dec [deg]
roll_nom	139.08722801007	Nominal Roll [deg]
revision	5	Processing version of data
ontime	5361.9883508533	Sum of GTIs [s]
livetime	5294.0916257531	Livetime [s]
ontime0	2246.0391385555	Sum of GTIs [s]
ontime1	2268.7264384031	Sum of GTIs [s]
ontime2	2122.8796687126	Sum of GTIs [s]
ontime3	2148.8080185652	Sum of GTIs [s]
ontime6	2434.0191688389	Sum of GTIs [s]
ontime7	5361.9883508533	Sum of GTIs [s]
l2events	1348066	Number of level 2 events

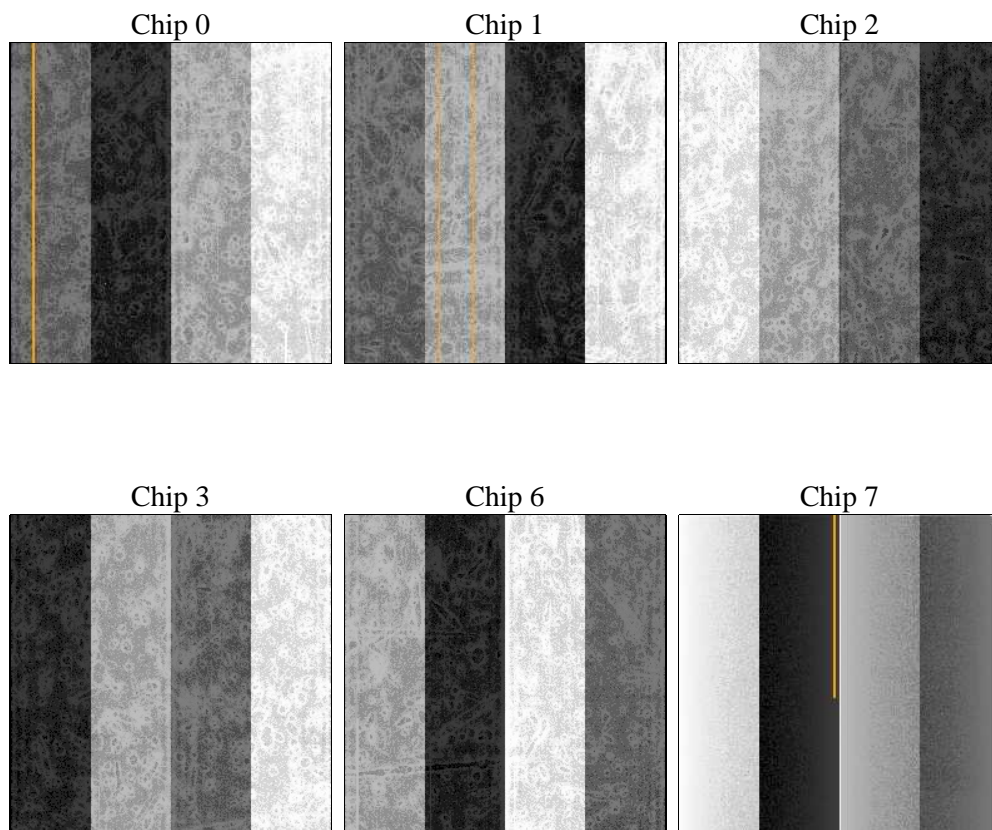
2 OBI

2.1 OBI

2.1.1 Images



2.1.2 Bias



2.1.3 Parameters

obi_num	1	Obi number	sched_exp_time	0.0	[s] Scheduled observation exposure time
ascdsver	8.4.5	Processing system revision	ontime	5361.9883508533	Sum of GTIs [s]
caldsver	4.5.1.1	 	ontime0	2246.0391385555	Sum of GTIs [s]
date	2012-08-27T21:14:57	Date and time of file creation	ontime1	2268.7264384031	Sum of GTIs [s]
revision	5	Processing version of data	ontime2	2122.8796687126	Sum of GTIs [s]
			ontime3	2148.8080185652	Sum of GTIs [s]
			ontime6	2434.0191688389	Sum of GTIs [s]
			ontime7	5361.9883508533	Sum of GTIs [s]
			l1events	1532747	Number of level 1 events

2.1.4 Events

	ccd 0	ccd 1	ccd 2	ccd 3	ccd 6	ccd 7		ccd 0	ccd 1	ccd 2	ccd 3	ccd 6	ccd 7
level 1 events	205417	207330	197344	201242	233176	488238	grade 0 events	102624	103585	99029	101371	115775	117893
rejected events	19786	19699	19613	20240	20708	28388		49%	49%	50%	50%	49%	24%
rejected %	9%	9%	9%	10%	8%	5%	grade 1 events	580	594	564	601	618	311
								0%	0%	0%	0%	0%	0%
							grade 2 events	32497	32823	31096	31454	36562	102143
								15%	15%	15%	15%	15%	20%
							grade 3 events	11873	12144	11132	11504	13226	47660
								5%	5%	5%	5%	5%	9%
							grade 4 events	11564	11957	11247	11330	13069	46909
								5%	5%	5%	5%	5%	9%
							grade 5 events	1472	1564	1424	1463	1705	6477
								0%	0%	0%	0%	0%	1%
							grade 6 events	27073	27122	25227	25343	33836	145515
								13%	13%	12%	12%	14%	29%
							grade 7 events	17734	17541	17625	18176	18385	21330
								8%	8%	8%	9%	7%	4%

2.2 Compared Parameters

Parameter	Planned	Actual
Instrument	ACIS	ACIS
Detector	ACIS-012367	ACIS-012367
Grating	NONE	NONE
Data mode	FAINT	FAINT
Observation mode	SECONDARY	SECONDARY
[deg] Pointing RA	0	10.87590852437232
[deg] Pointing Dec	0	-58.24564223791613
[deg] Pointing Roll	0.0	139.0872280100652
[mm] SIM focus pos	-0.782348	-0.7809083437167272
[mm] SIM defocus	0	0.7524282956875696
[mm] SIM translation stage pos	-233.592463	250.466033080201
[mm] SIM translation stage offset	0	-0.01005468664627074
[s] Observation start time (MET)	74971205.717373	74971204.948907
Observation start date	2000-05-17T17:20:06	2000-05-17T17:20:04
[s] Observation end time (MET)	74981734.51775999	74981733.749294
Observation end date	2000-05-17T20:15:35	2000-05-17T20:15:33
Read mode	TIMED	TIMED

Parameter	Planned	Actual
Obspar format version number	7	7
Obspar file type	PREDICTED	ACTUAL
Obspar update status	NONE	UPDATED
On-chip summing requested	N	N
Subarray requested	NONE	NONE
Alternating exposures requested	N	N
[s] Primary exposure time	3.2	3.2

2.3 Star Slots

2.4 FID Slots

A Summary

A.1 Status

V&V Scientist	Jen Lauer
V&V Date (YYYY-MM-DD)	2012.08.30
V&V Edition	1
V&V Disposition and Status	OK
V&V Charge Time	5.3619883508533

A.2 Comments