

# V&V Reference Report

## L2 ASCDS Version : 8.4.5

Observation 62022 - L2 Version 5  
Chandra X-Ray Center

L2 Processing Date : Aug 29 2012

## Contents

<b>1</b>	<b>Front</b>	<b>2</b>
<b>2</b>	<b>OBI</b>	<b>3</b>
2.1	OBI . . . . .	3
2.1.1	Images . . . . .	3
2.1.2	Bias . . . . .	3
2.1.3	Parameters . . . . .	4
2.1.4	Events . . . . .	4
2.2	Compared Parameters . . . . .	5
2.3	Star Slots . . . . .	6
2.4	FID Slots . . . . .	6
<b>A</b>	<b>Summary</b>	<b>7</b>
A.1	Status . . . . .	7
A.2	Comments . . . . .	7

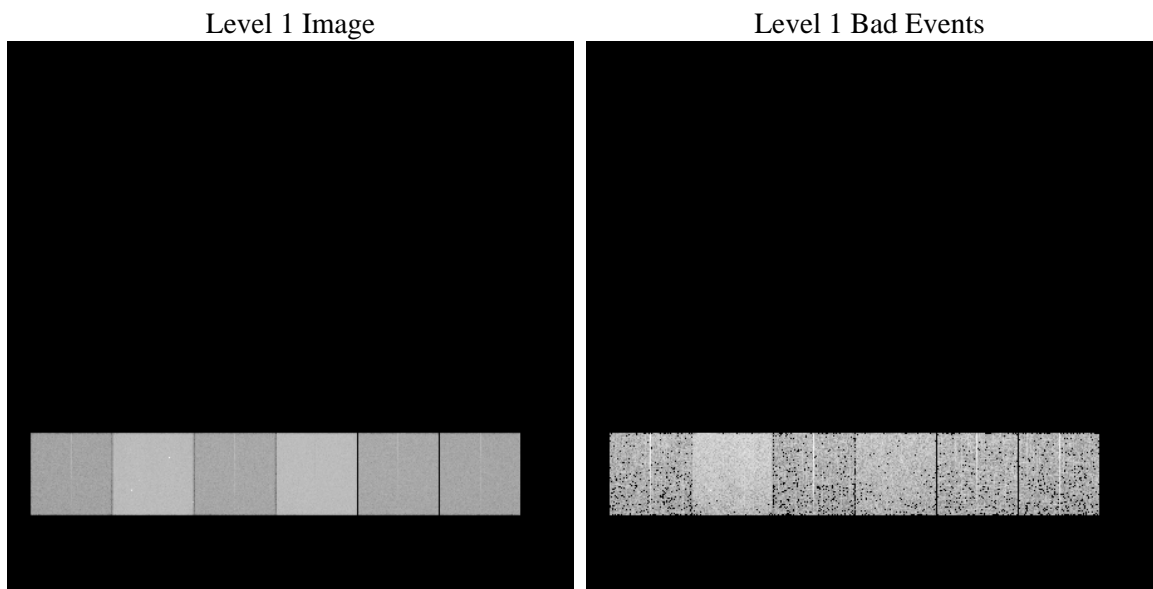
# 1 Front

seq_num	&#160	Sequence number
obs_id	62022	Observation id
title	ACIS-456789 diagnostics	Proposal title
observer	CHANDRA engineering request/realtime commanding	Principal investig
object	&#160	Source name
dtcycle	0	&#160
cycle	P	events from which exps? Prim/Second/Both
ra_targ	0.0	Observer's specified target RA [deg]
dec_targ	0.0	Observer's specified target Dec [deg]
ra_nom	274.12541281734	Nominal RA [deg]
dec_nom	72.127673884113	Nominal Dec [deg]
roll_nom	173.23583696687	Nominal Roll [deg]
revision	5	Processing version of data
ontime	4137.6278891861	Sum of GTIs [s]
livetime	4085.2347534729	Livetime [s]
ontime4	1716.5853233933	Sum of GTIs [s]
ontime5	4432.5573539883	Sum of GTIs [s]
ontime6	1868.9140933305	Sum of GTIs [s]
ontime7	4137.6278891861	Sum of GTIs [s]
ontime8	1924.2488386929	Sum of GTIs [s]
ontime9	1826.8124090284	Sum of GTIs [s]
l2events	1232309	Number of level 2 events

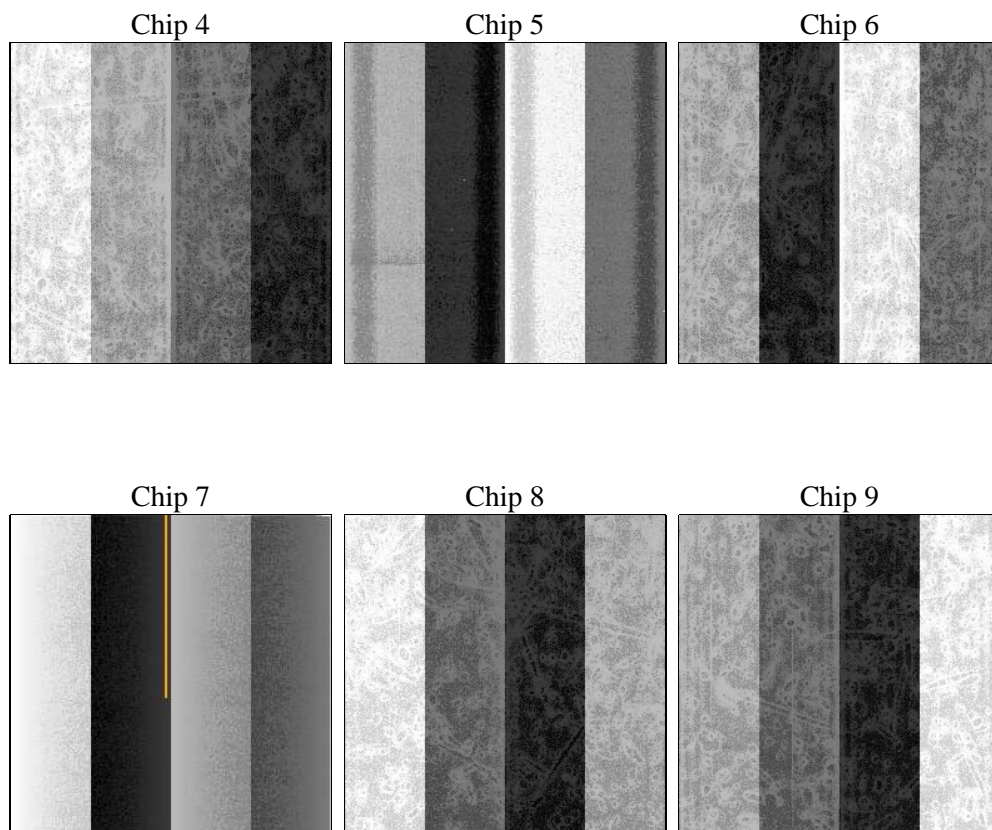
## 2 OBI

### 2.1 OBI

#### 2.1.1 Images



#### 2.1.2 Bias



### 2.1.3 Parameters

obi_num	0	Obi number	sched_exp_time	0.0	[s] Scheduled observation exposure time
ascdsver	8.4.5	Processing system revision	ontime	4137.6278891861	Sum of GTIs [s]
caldbver	4.5.1.1	&#160	ontime4	1716.5853233933	Sum of GTIs [s]
date	2012-08-29T09:17:52	Date and time of file creation	ontime5	4432.5573539883	Sum of GTIs [s]
revision	5	Processing version of data	ontime6	1868.9140933305	Sum of GTIs [s]
			ontime7	4137.6278891861	Sum of GTIs [s]
			ontime8	1924.2488386929	Sum of GTIs [s]
			ontime9	1826.8124090284	Sum of GTIs [s]
			l1events	1403486	Number of level 1 events

### 2.1.4 Events

	ccd 4	ccd 5	ccd 6	ccd 7	ccd 8	ccd 9		ccd 4	ccd 5	ccd 6	ccd 7	ccd 8	ccd 9
level 1 events	151752	358648	176530	368813	182322	165421	grade 0 events	76800	89170	87723	90458	90905	82451
rejected events	16531	31272	16111	20755	17938	15610		50%	24%	49%	24%	49%	49%
rejected %	10%	8%	9%	5%	9%	9%	grade 1 events	491	280	437	217	452	446
								0%	0%	0%	0%	0%	0%
							grade 2 events	23671	109390	27618	77938	29062	26342
								15%	30%	15%	21%	15%	15%
							grade 3 events	8353	23026	10015	35457	10317	9256
								5%	6%	5%	9%	5%	5%
							grade 4 events	8336	23088	10034	35352	10268	9289
								5%	6%	5%	9%	5%	5%
							grade 5 events	1112	6528	1278	4750	1407	1261
								0%	1%	0%	1%	0%	0%
							grade 6 events	18061	82702	25029	108853	23832	22473
								11%	23%	14%	29%	13%	13%
							grade 7 events	14928	24464	14396	15788	16079	13903
								9%	6%	8%	4%	8%	8%

## 2.2 Compared Parameters

Parameter	Planned	Actual	Parameter	Planned	Actual
Instrument	ACIS	ACIS	Obspar format version number	7	7
Detector	ACIS-456789	ACIS-456789	Obspar file type	PREDICTED	ACTUAL
Grating	NONE	NONE	Obspar update status	NONE	UPDATED
Data mode	FAINT	FAINT	On-chip summing requested	N	N
Observation mode	SECONDARY	SECONDARY	Subarray requested	NONE	NONE
[deg] Pointing RA	0	274.1254128173437	Alternating exposures requested	N	N
[deg] Pointing Dec	0	72.12767388411297	[s] Primary exposure time	0.000000	3.2
[deg] Pointing Roll	0.0	173.235836966869			
[mm] SIM focus pos	-0.684267	-0.6828225247311905			
[mm] SIM defocus	0	0.8505141146731063			
[mm] SIM translation stage pos	-190.132523	250.466033080201			
[mm] SIM translation stage offset	0	-0.01005468664627074			
[s] Observation start time (MET)	77663839.816	77663839.04798			
Observation start date	2000-06-17T21:17:20	2000-06-17T21:17:19			
[s] Observation end time (MET)	77712029.168	77712028.399758			
Observation end date	2000-06-18T10:40:29	2000-06-18T10:40:28			
Read mode	TIMED	TIMED			

## 2.3 Star Slots

## 2.4 FID Slots

## **A Summary**

### **A.1 Status**

V&V Scientist	Jen Lauer
V&V Date (YYYY-MM-DD)	2012.08.31
V&V Edition	1
V&V Disposition and Status	OK
V&V Charge Time	4.1376278891861

### **A.2 Comments**