

# V&V Reference Report

## L2 ASCDS Version : 7.6.10

Observation 62002 - L2 Version 001  
Chandra X-Ray Center

L2 Processing Date : May 30 2007

## Contents

<b>1</b>	<b>Front</b>	<b>2</b>
<b>2</b>	<b>OBI</b>	<b>3</b>
2.1	OBI . . . . .	3
2.1.1	Images . . . . .	3
2.1.2	Bias . . . . .	3
2.1.3	Parameters . . . . .	4
2.1.4	Events . . . . .	4
2.2	Compared Parameters . . . . .	5
2.3	Star Slots . . . . .	6
2.4	FID Slots . . . . .	6
<b>A</b>	<b>Summary</b>	<b>7</b>
A.1	Status . . . . .	7
A.2	Comments . . . . .	7

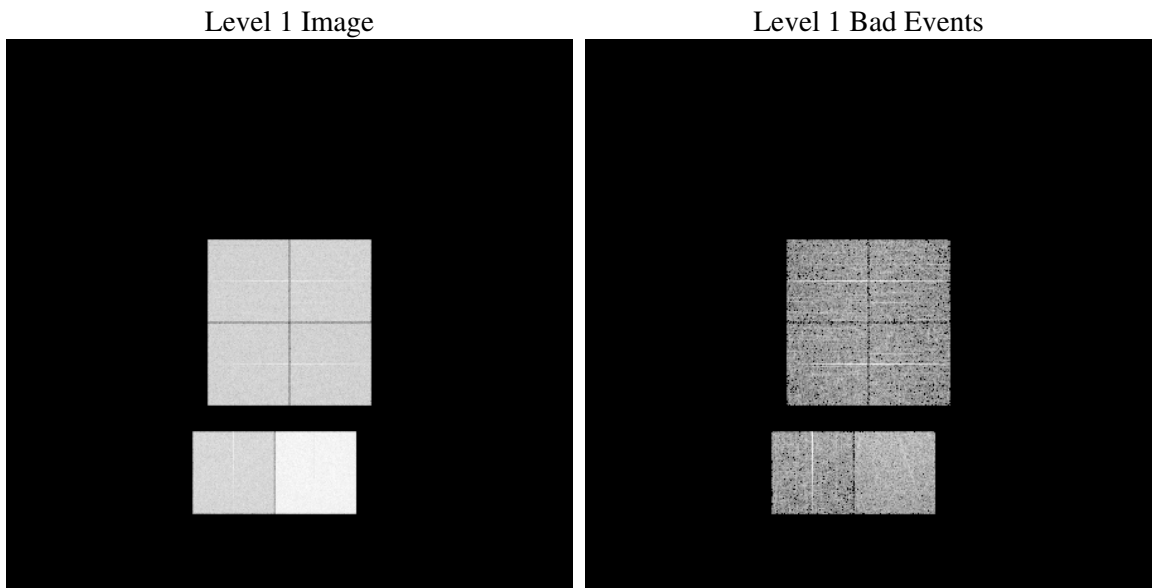
# 1 Front

seq_num	&#160
obs_id	62002
title	ACIS-012367 diagnostics
observer	CHANDRA engineering request/realtime commanding
object	&#160
dtcycle	0
cycle	P
ra_targ	0.0
dec_targ	0.0
ra_nom	334.09870296474
dec_nom	56.555316008136
roll_nom	136.9643224603
revision	4
ontime	5605.4725305885
livetime	5534.4926621959
ontime0	2293.1685739458
ontime1	2380.6678919792
ontime2	2244.5851227343
ontime3	2218.4926727414
ontime6	2500.668042928
ontime7	5605.4725305885
l2events	1354890

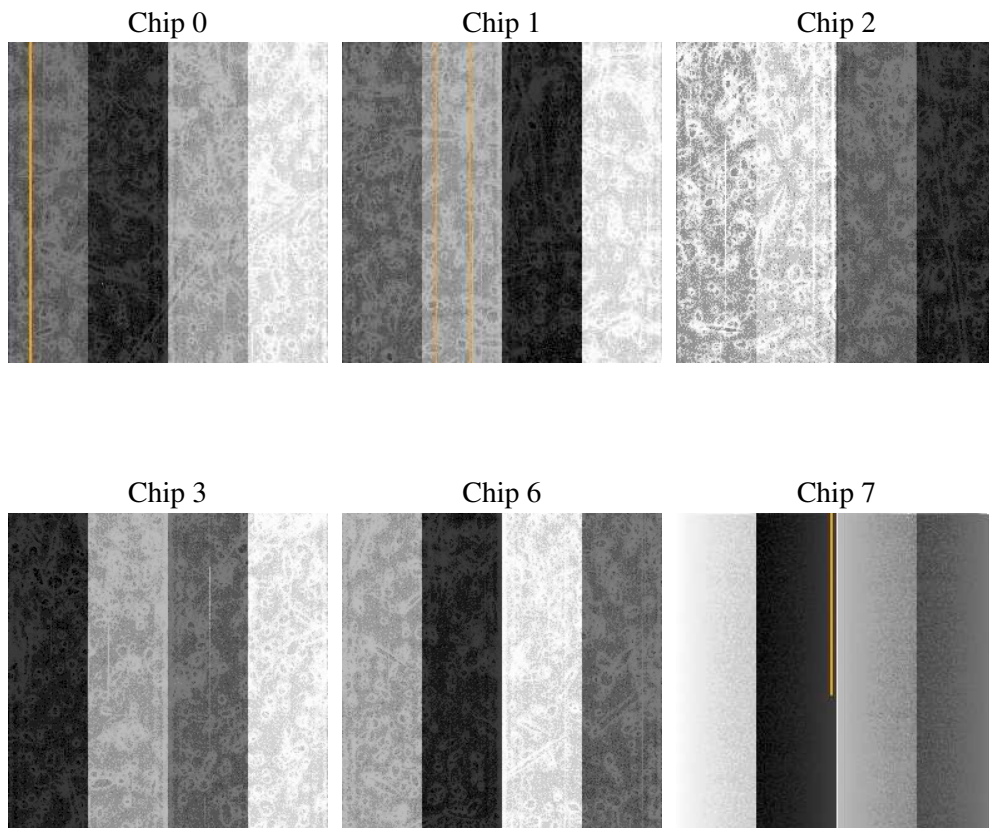
## 2 OBI

### 2.1 OBI

#### 2.1.1 Images



#### 2.1.2 Bias



### 2.1.3 Parameters

obi_num	0
ascdsver	7.6.10
caldbver	3.4.0
date	2007-05-30T21:49:34
revision	4

sched_exp_time	0.0
ontime	5605.4725305885
ontime0	2293.1685739458
ontime1	2380.6678919792
ontime2	2244.5851227343
ontime3	2218.4926727414
ontime6	2500.668042928
ontime7	5605.4725305885
l1events	1553998

### 2.1.4 Events

	ccd 0	ccd 1	ccd 2	ccd 3	ccd 6	ccd 7
level 1 events	205021	212734	204331	201385	233695	496832
rejected events	21431	21618	21762	21712	23323	33296
rejected %	10%	10%	10%	10%	9%	6%

	ccd 0	ccd 1	ccd 2	ccd 3	ccd 6	ccd 7
grade 0 events	102028	106202	102546	102069	116046	120041
	49%	49%	50%	50%	49%	24%
grade 1 events	584	554	537	586	629	331
	0%	0%	0%	0%	0%	0%
grade 2 events	32790	34159	32227	31409	36373	103501
	15%	16%	15%	15%	15%	20%
grade 3 events	11676	12046	11586	11463	13175	48049
	5%	5%	5%	5%	5%	9%
grade 4 events	11698	12302	11611	11205	13179	47536
	5%	5%	5%	5%	5%	9%
grade 5 events	1419	1510	1357	1478	1683	6618
	0%	0%	0%	0%	0%	1%
grade 6 events	27029	27723	26138	25072	33490	148202
	13%	13%	12%	12%	14%	29%
grade 7 events	17797	18238	18329	18103	19120	22554
	8%	8%	8%	8%	8%	4%

## 2.2 Compared Parameters

Parameter	Planned	Actual	Parameter	Planned	Actual
Instrument	ACIS	ACIS	Obspar format version number	6	6
Detector	ACIS-012367	ACIS-012367	Obspar file type	PREDICTED	ACTUAL
Grating	NONE	NONE	Obspar update status	NONE	UPDATED
Data mode	FAINT	FAINT	On-chip summing requested	N	N
Observation mode	SECONDARY	SECONDARY	Subarray requested	NONE	NONE
Pointing RA	0	334.0987029647412	Alternating exposures requested	N	N
Pointing Dec	0	56.55531600813578	Primary exposure time	0.000000	3.2
Pointing Roll	0.0	136.9643224602954			
SIM focus pos (mm)	-0.782348	-0.7809083437167272			
SIM defocus (mm)	0	0.7524282956875696			
SIM translation stage pos (mm)	-233.592463	250.466033080201			
SIM translation stage offset (mm)	0	-0.01005468664627074			
Observation start time	79307644.677	79307643.90857799			
Observation start date	2000-07-06T21:54:05	2000-07-06T21:54:03			
Observation end time	79318155.027	79318154.258966			
Observation end date	2000-07-07T00:49:15	2000-07-07T00:49:14			
Read mode	TIMED	TIMED			

## **2.3 Star Slots**

## **2.4 FID Slots**

# A Summary

## A.1 Status

V&V Scientist	Jen Lauer
V&V Date (YYYY-MM-DD)	2007.05.31
V&V Edition	1
V&V Disposition and Status	OK
V&V Charge Time	5.60547253

## A.2 Comments

Focal plane temperature is warmer than -118.7 C degrees during the first 3ksec of this observation. The ACIS spectral response calibration for the front-illuminated chips is less accurate at these warmer temperatures than it is at -119.7 C. The back-illuminatd chips are not affected at the focal plane temperatures recorded for this observation. Users whose science objectives depend on the most accurate spectral response (i.e.: fitting line-rich spectra) may notice an effect. Users whose science objectives do not depend on the most accurate spectral response should not notice an effect.