

V&V Reference Report

L2 ASCDS Version : 8.4.5

Observation 61992 - L2 Version 5
Chandra X-Ray Center

L2 Processing Date : Aug 30 2012

Contents

1	Front	2
2	OBI	3
2.1	OBI	3
2.1.1	Images	3
2.1.2	Bias	3
2.1.3	Parameters	4
2.1.4	Events	4
2.2	Compared Parameters	5
2.3	Star Slots	6
2.4	FID Slots	6
A	Summary	7
A.1	Status	7
A.2	Comments	7

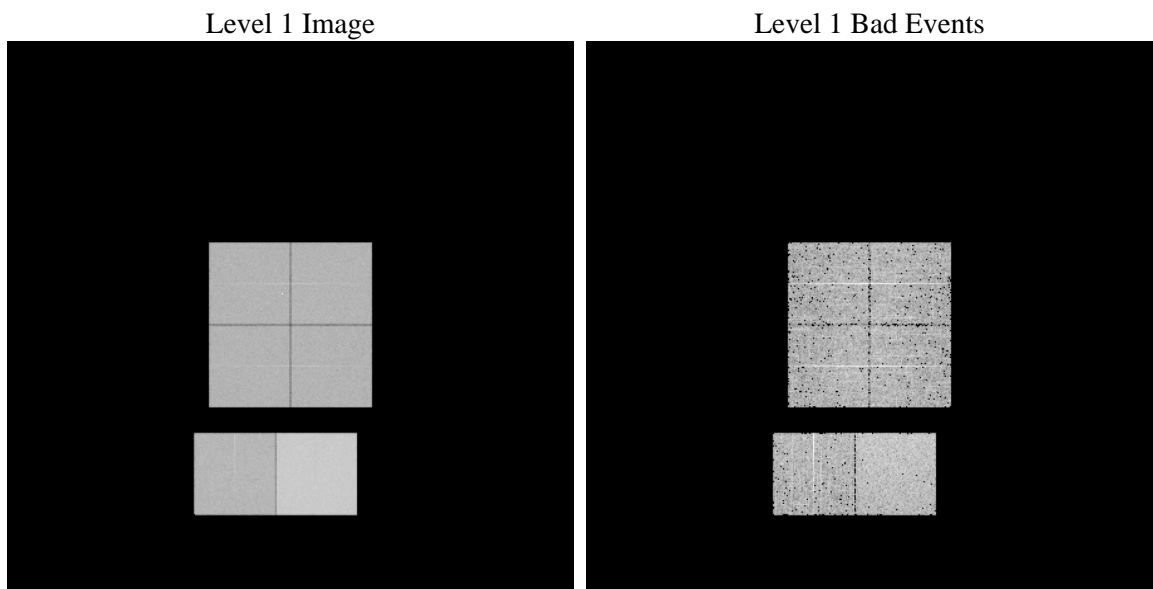
1 Front

seq_num	 	Sequence number
obs_id	61992	Observation id
title	ACIS-012367 diagnostics	Proposal title
observer	CHANDRA engineering request/realtime commanding	Principal investig
object	 	Source name
dtcycle	0	
cycle	P	events from which exps? Prim/Second/Both
ra_targ	0.0	Observer's specified target RA [deg]
dec_targ	0.0	Observer's specified target Dec [deg]
ra_nom	158.99419235498	Nominal RA [deg]
dec_nom	-54.37724672323	Nominal Dec [deg]
roll_nom	218.83410241461	Nominal Roll [deg]
revision	5	Processing version of data
ontime	5355.6641624421	Sum of GTIs [s]
livetime	5287.8475180234	Livetime [s]
ontime0	2382.1620096415	Sum of GTIs [s]
ontime1	2446.9828792661	Sum of GTIs [s]
ontime2	2349.7519388795	Sum of GTIs [s]
ontime3	2320.5826886445	Sum of GTIs [s]
ontime6	2547.4550092965	Sum of GTIs [s]
ontime7	5355.6641624421	Sum of GTIs [s]
l2events	1358087	Number of level 2 events

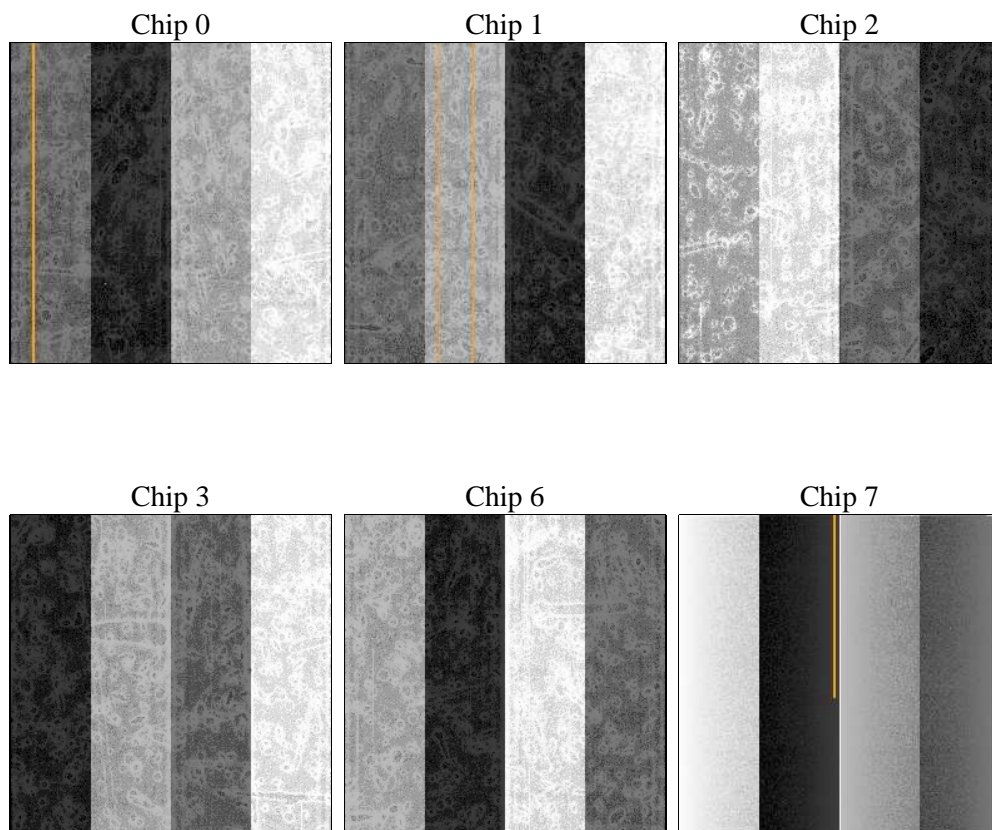
2 OBI

2.1 OBI

2.1.1 Images



2.1.2 Bias



2.1.3 Parameters

obi_num	1	Obi number	sched_exp_time	0.0	[s] Scheduled observation exposure time
ascdsver	8.4.5	Processing system revision	ontime	5355.6641624421	Sum of GTIs [s]
caldbver	4.5.1.1	 	ontime0	2382.1620096415	Sum of GTIs [s]
date	2012-08-30T19:15:25	Date and time of file creation	ontime1	2446.9828792661	Sum of GTIs [s]
revision	5	Processing version of data	ontime2	2349.7519388795	Sum of GTIs [s]
			ontime3	2320.5826886445	Sum of GTIs [s]
			ontime6	2547.4550092965	Sum of GTIs [s]
			ontime7	5355.6641624421	Sum of GTIs [s]
			l1events	1554089	Number of level 1 events

2.1.4 Events

	ccd 0	ccd 1	ccd 2	ccd 3	ccd 6	ccd 7		ccd 0	ccd 1	ccd 2	ccd 3	ccd 6	ccd 7
level 1 events	210762	216519	210747	209897	237712	468452	grade 0 events	106266	109247	106803	107207	118689	114049
rejected events	19922	21329	21343	21424	23146	30370		50%	50%	50%	51%	49%	24%
rejected %	9%	9%	10%	10%	9%	6%	grade 1 events	541	622	558	537	584	305
								0%	0%	0%	0%	0%	0%
							grade 2 events	33774	34936	33819	33338	37582	98356
								16%	16%	16%	15%	15%	20%
							grade 3 events	12884	12526	12000	12076	13530	45360
								6%	5%	5%	5%	5%	9%
							grade 4 events	12250	12536	12000	12126	13548	45245
								5%	5%	5%	5%	5%	9%
							grade 5 events	1388	1427	1436	1397	1625	5843
								0%	0%	0%	0%	0%	1%
							grade 6 events	28194	28765	27537	26411	33893	141269
								13%	13%	13%	12%	14%	30%
							grade 7 events	15465	16460	16594	16805	18261	18025
								7%	7%	7%	8%	7%	3%

2.2 Compared Parameters

Parameter	Planned	Actual	Parameter	Planned	Actual
Instrument	ACIS	ACIS	Obspar format version number	7	7
Detector	ACIS-012367	ACIS-012367	Obspar file type	PREDICTED	ACTUAL
Grating	NONE	NONE	Obspar update status	NONE	UPDATED
Data mode	FAINT	FAINT	On-chip summing requested	N	N
Observation mode	SECONDARY	SECONDARY	Subarray requested	NONE	NONE
[deg] Pointing RA	0	158.9941923549802	Alternating exposures requested	N	N
[deg] Pointing Dec	0	-54.37724672322963	[s] Primary exposure time	0.000000	3.2
[deg] Pointing Roll	0.0	218.8341024146088			
[mm] SIM focus pos	-0.782348	-0.6828225247311905			
[mm] SIM defocus	0	0.8505141146731063			
[mm] SIM translation stage pos	-233.592463	250.4635187648994			
[mm] SIM translation stage offset	0	-0.007540371344731511			
[s] Observation start time (MET)	80225989.361	80225988.592474			
Observation start date	2000-07-17T12:59:49	2000-07-17T12:59:48			
[s] Observation end time (MET)	80236499.711	80236498.942864			
Observation end date	2000-07-17T15:55:00	2000-07-17T15:54:58			
Read mode	TIMED	TIMED			

2.3 Star Slots

2.4 FID Slots

A Summary

A.1 Status

V&V Scientist	Jen Lauer
V&V Date (YYYY-MM-DD)	2012.09.05
V&V Edition	1
V&V Disposition and Status	OK
V&V Charge Time	5.3556641624421

A.2 Comments