

V&V Reference Report

L2 ASCDS Version : 7.6.10

Observation 61992 - L2 Version 001
Chandra X-Ray Center

L2 Processing Date : May 30 2007

Contents

1	Front	2
2	OBI	3
2.1	OBI	3
2.1.1	Images	3
2.1.2	Bias	3
2.1.3	Parameters	4
2.1.4	Events	4
2.2	Compared Parameters	5
2.3	Star Slots	6
2.4	FID Slots	6
A	Summary	7
A.1	Status	7
A.2	Comments	7

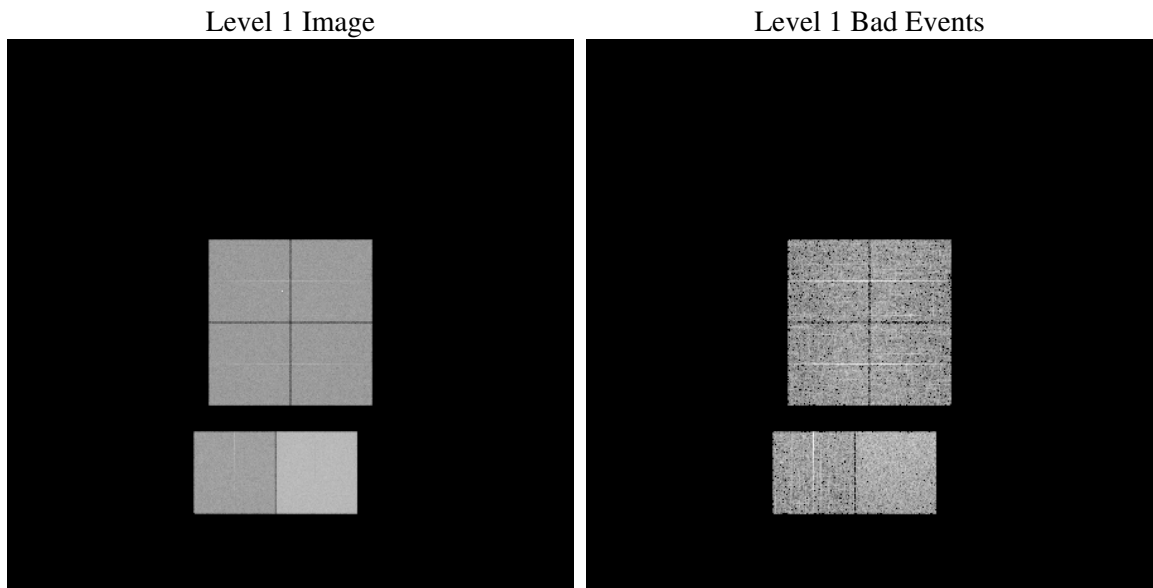
1 Front

seq_num	
obs_id	61992
title	ACIS-012367 diagnostics
observer	CHANDRA engineering request/realtime commanding
object	
dtcycle	0
cycle	P
ra_targ	0.0
dec_targ	0.0
ra_nom	158.99419235498
dec_nom	-54.37724672323
roll_nom	218.83410241461
revision	4
ontime	5356.4554765373
livetime	5288.6288120232
ontime0	2381.3943637311
ontime1	2446.2562733442
ontime2	2349.0663729608
ontime3	2319.7329627275
ontime6	2546.8104833812
ontime7	5356.4554765373
l2events	1358368

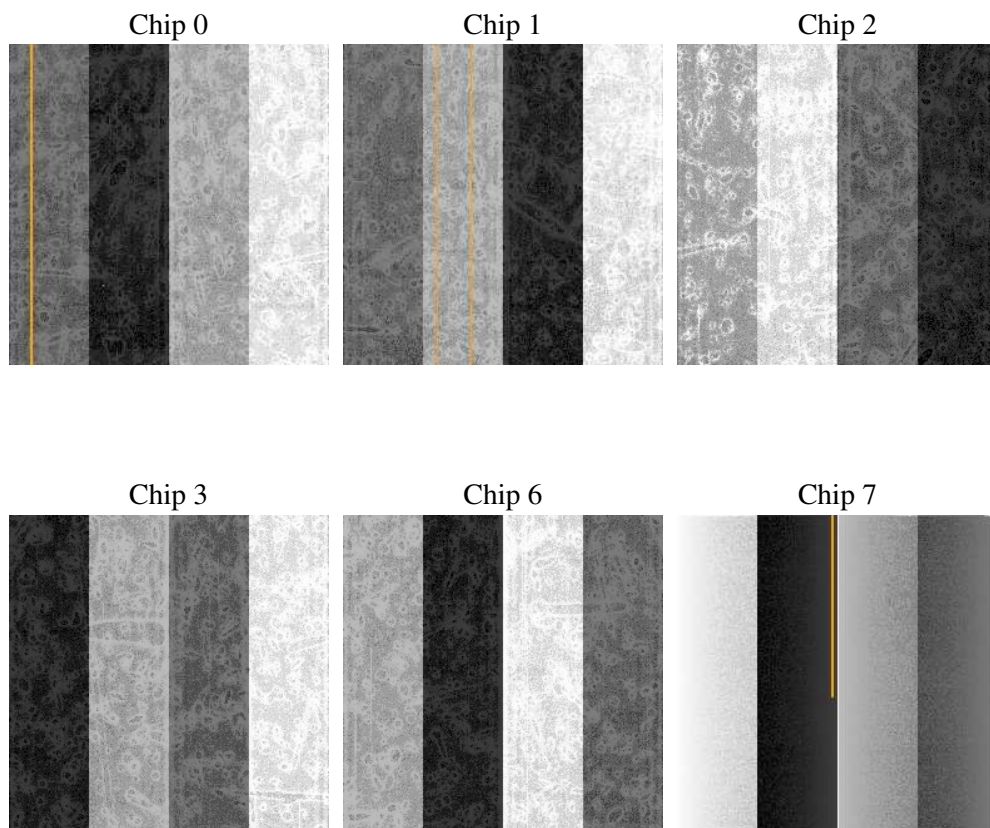
2 OBI

2.1 OBI

2.1.1 Images



2.1.2 Bias



2.1.3 Parameters

obi_num	1
ascdsver	7.6.10
caldbver	3.4.0
date	2007-05-31T01:17:50
revision	4

sched_exp_time	0.0
ontime	5356.4554765373
ontime0	2381.3943637311
ontime1	2446.2562733442
ontime2	2349.0663729608
ontime3	2319.7329627275
ontime6	2546.8104833812
ontime7	5356.4554765373
l1events	1554089

2.1.4 Events

	ccd 0	ccd 1	ccd 2	ccd 3	ccd 6	ccd 7
level 1 events	210762	216519	210747	209897	237712	468452
rejected events	19922	21328	21342	21425	23144	30090
rejected %	9%	9%	10%	10%	9%	6%

	ccd 0	ccd 1	ccd 2	ccd 3	ccd 6	ccd 7
grade 0 events	106270	109249	106804	107210	118695	114029
	50%	50%	50%	51%	49%	24%
grade 1 events	541	622	559	537	584	305
	0%	0%	0%	0%	0%	0%
grade 2 events	33770	34934	33819	33335	37576	98377
	16%	16%	16%	15%	15%	21%
grade 3 events	12886	12528	12003	12077	13533	45355
	6%	5%	5%	5%	5%	9%
grade 4 events	12251	12537	12002	12126	13550	45233
	5%	5%	5%	5%	5%	9%
grade 5 events	1388	1427	1435	1397	1625	5844
	0%	0%	0%	0%	0%	1%
grade 6 events	28191	28763	27532	26409	33890	141275
	13%	13%	13%	12%	14%	30%
grade 7 events	15465	16459	16593	16806	18259	18034
	7%	7%	7%	8%	7%	3%

2.2 Compared Parameters

Parameter	Planned	Actual	Parameter	Planned	Actual
Instrument	ACIS	ACIS	Obspar format version number	6	6
Detector	ACIS-012367	ACIS-012367	Obspar file type	PREDICTED	ACTUAL
Grating	NONE	NONE	Obspar update status	NONE	UPDATED
Data mode	FAINT	FAINT	On-chip summing requested	N	N
Observation mode	SECONDARY	SECONDARY	Subarray requested	NONE	NONE
Pointing RA	0	158.9941923549802	Alternating exposures requested	N	N
Pointing Dec	0	-54.37724672322963	Primary exposure time	0.000000	3.2
Pointing Roll	0.0	218.8341024146089			
SIM focus pos (mm)	-0.782348	-0.6828225247311905			
SIM defocus (mm)	0	0.8505141146731063			
SIM translation stage pos (mm)	-233.592463	250.4635187648994			
SIM translation stage offset (mm)	0	-0.007540371344731511			
Observation start time	80225989.361	80225988.592474			
Observation start date	2000-07-17T12:59:49	2000-07-17T12:59:48			
Observation end time	80236499.711	80236498.942864			
Observation end date	2000-07-17T15:55:00	2000-07-17T15:54:58			
Read mode	TIMED	TIMED			

2.3 Star Slots

2.4 FID Slots

A Summary

A.1 Status

V&V Scientist	Jen Lauer
V&V Date (YYYY-MM-DD)	2007.05.31
V&V Edition	1
V&V Disposition and Status	OK
V&V Charge Time	5.35645547

A.2 Comments