

V&V Reference Report

L2 ASCDS Version : 7.6.7

Observation 6182 - L2 Version 002
Chandra X-Ray Center

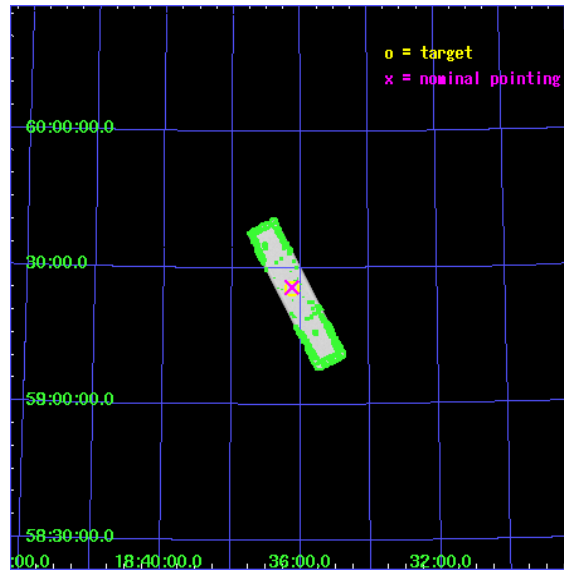
L2 Processing Date: Feb 25 2006

Contents

1	Front	2
2	OBI	3
2.1	OBI	3
2.1.1	Images	3
2.1.2	Parameters	4
2.1.3	Events	4
2.2	Compared Parameters	5
2.3	Aspect	6
2.4	Star Slots	9
2.4.1	Slot 3	9
2.4.2	Slot 4	10
2.4.3	Slot 5	11
2.4.4	Slot 6	12
2.4.5	Slot 7	13
2.5	FID Slots	14
2.5.1	Slot 0	14
2.5.2	Slot 1	15
2.5.3	Slot 2	16
3	Point Sources	17
A	Summary	18
A.1	Status	18
A.2	Comments	18

1 Front

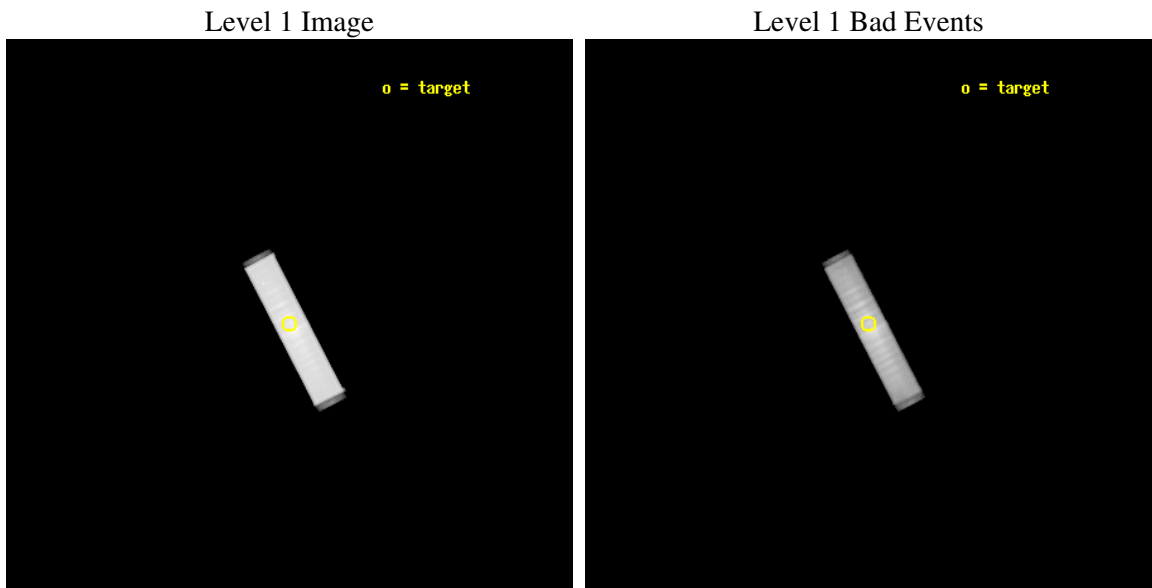
seq_num	500431
obs_id	6182
title	THE NEXT GEMINGA: TAKING THE PULSE OF THE EGRET SOURCE 3EG J1835+5918
observer	Prof. Jules Halpern
object	3EG J1835+5918
ra_targ	279.057083
dec_targ	59.425028
ra_nom	279.06152741798
dec_nom	59.429146150088
roll_nom	62.479879900085
revision	2
ontime	45181.233296096
livetime	45018.016073945
l2events	1519682



2 OBI

2.1 OBI

2.1.1 Images



2.1.2 Parameters

obi_num	0
ascdsver	7.6.7
caldbver	3.2.1
date	2006-02-25T11:19:12
revision	2

sched_exp_time	45000.000000
ontime	45181.233296096
l1events	2506307

2.1.3 Events

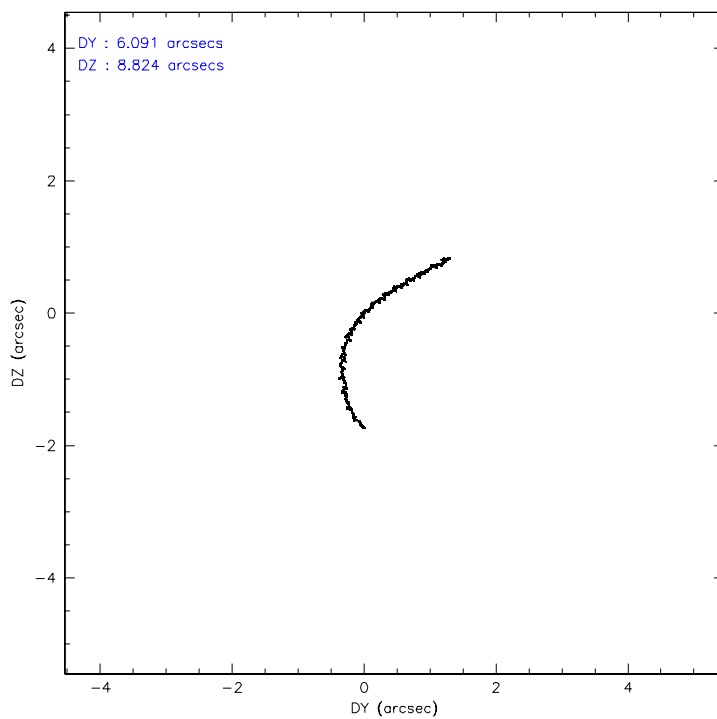
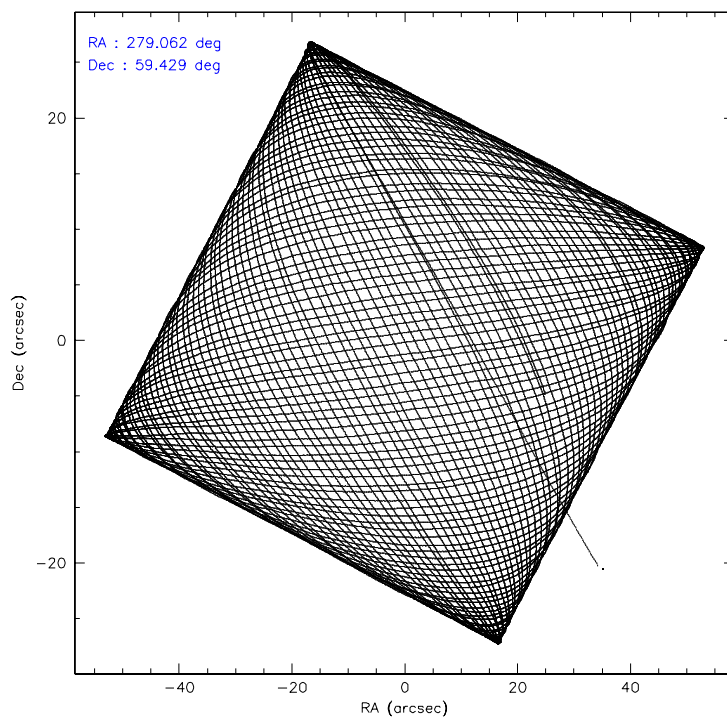
Level 1 Events

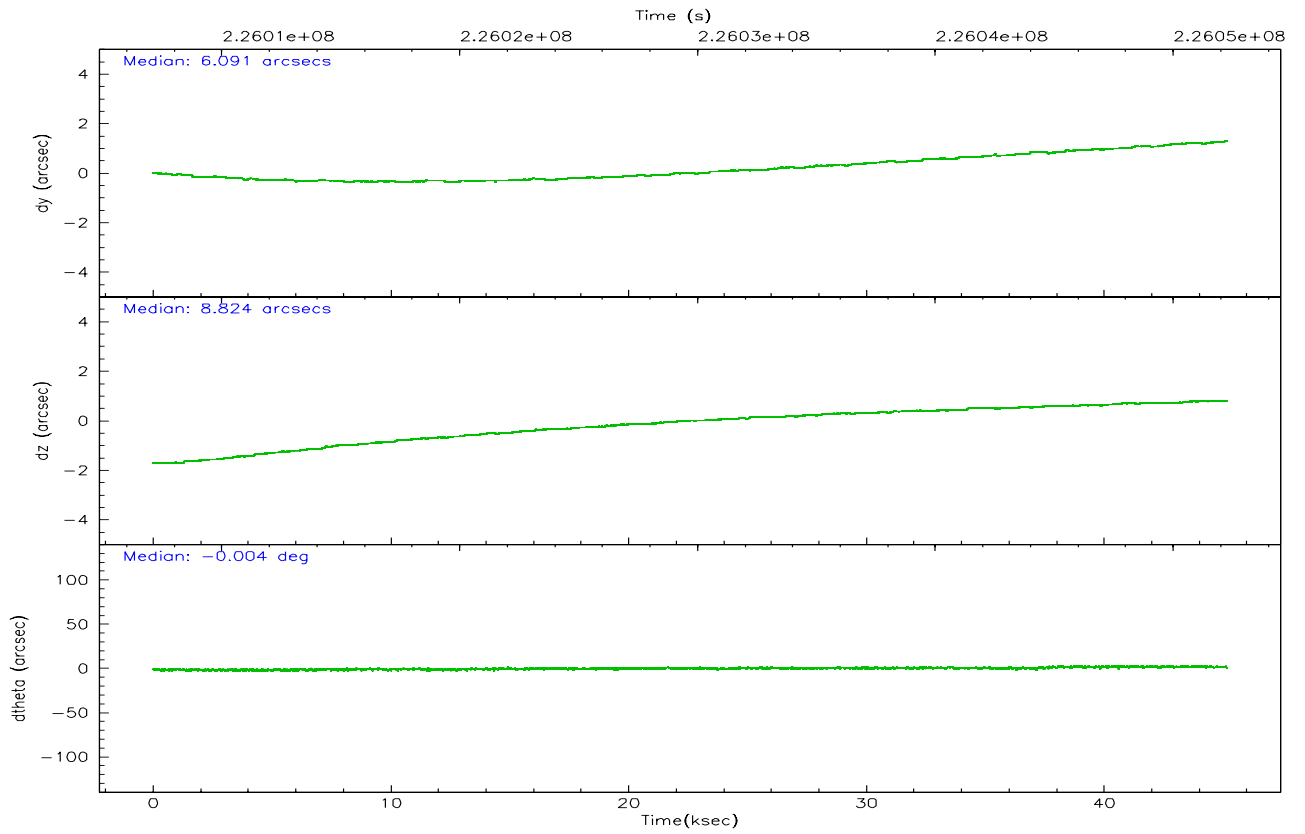
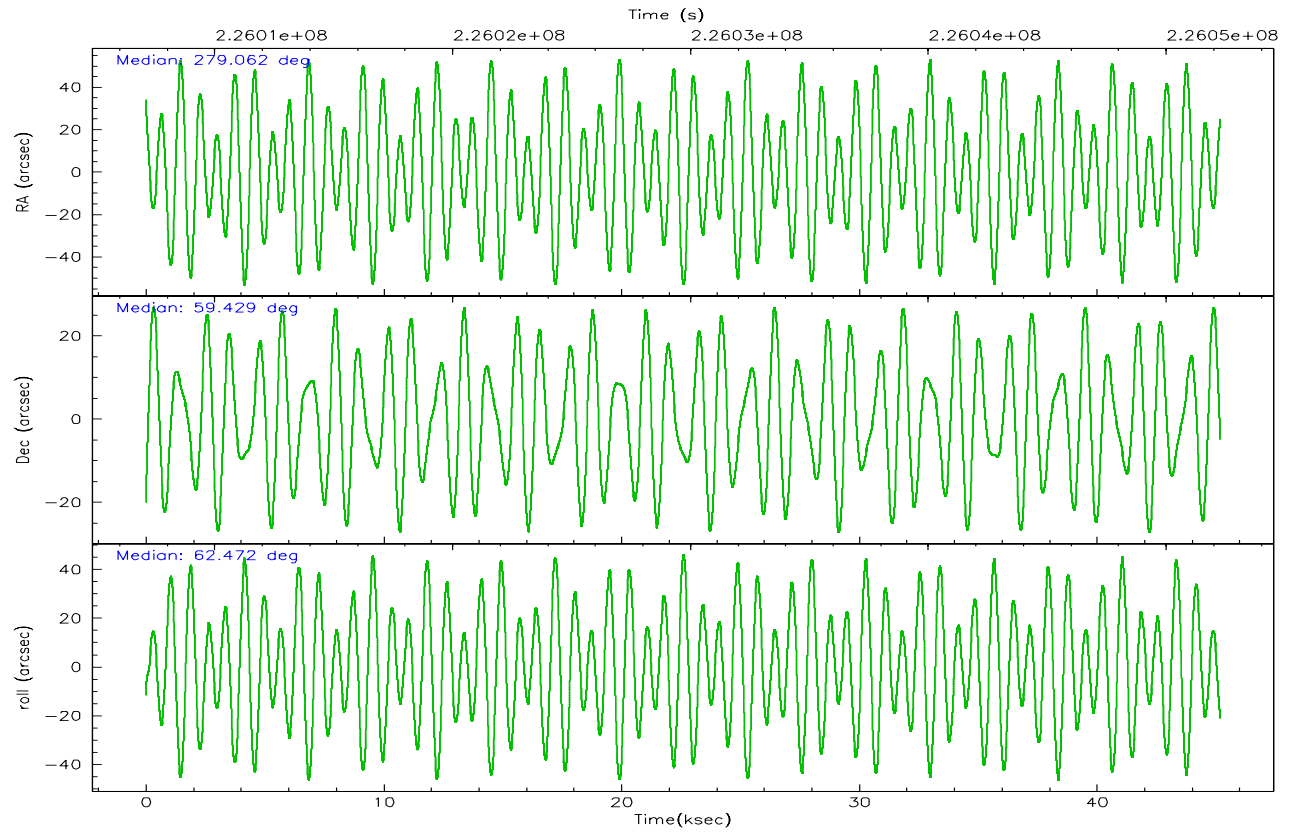
	segment 1	segment 2	segment 3
level 1 events	3324	2502978	5
rejected events	3145	853119	4
rejected %	94%	34%	80%

2.2 Compared Parameters

Parameter	Planned	Actual	Parameter	Planned	Actual
Instrument	HRC	HRC	Obspar format version number	6	6
Detector	HRC-S	HRC-S	Obspar file type	PREDICTED	ACTUAL
Grating	NONE	NONE	Obspar update status	NONE	UPDATED
Data mode	OBSERVING	OBSERVING			
Observation mode	POINTING	POINTING			
Pointing RA	279.066777	279.0615274179756			
Pointing Dec	59.400643	59.42914615008767			
Pointing Roll	62.408029	62.47987990008511			
SIM focus pos (mm)	-1.429586	-1.428180813131781			
SIM defocus (mm)	0.1037507710433287	0.1051558262725154			
SIM translation stage pos (mm)	250.455976	250.466033080201			
SIM translation stage offset (mm)	0	-0.01005468664627074			
Observation start time	226007279.184000	226006117.39158			
Observation start date	2005-02-28T19:46:55	2005-02-28T19:28:37			
Observation end time	226052279.184000	226053173.09371			
Observation end date	2005-03-01T08:16:55	2005-03-01T08:32:53			

2.3 Aspect



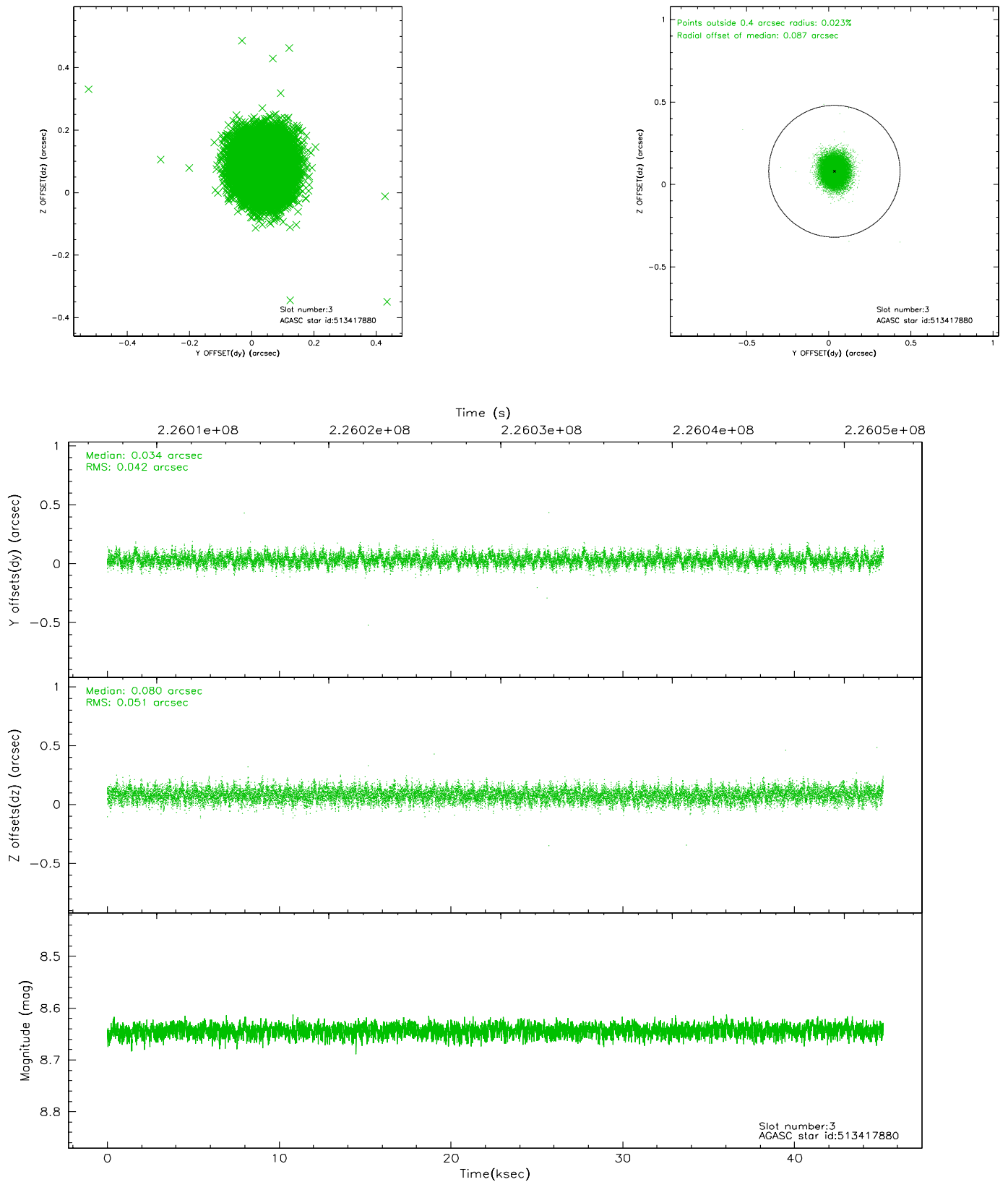


Slot Statistics

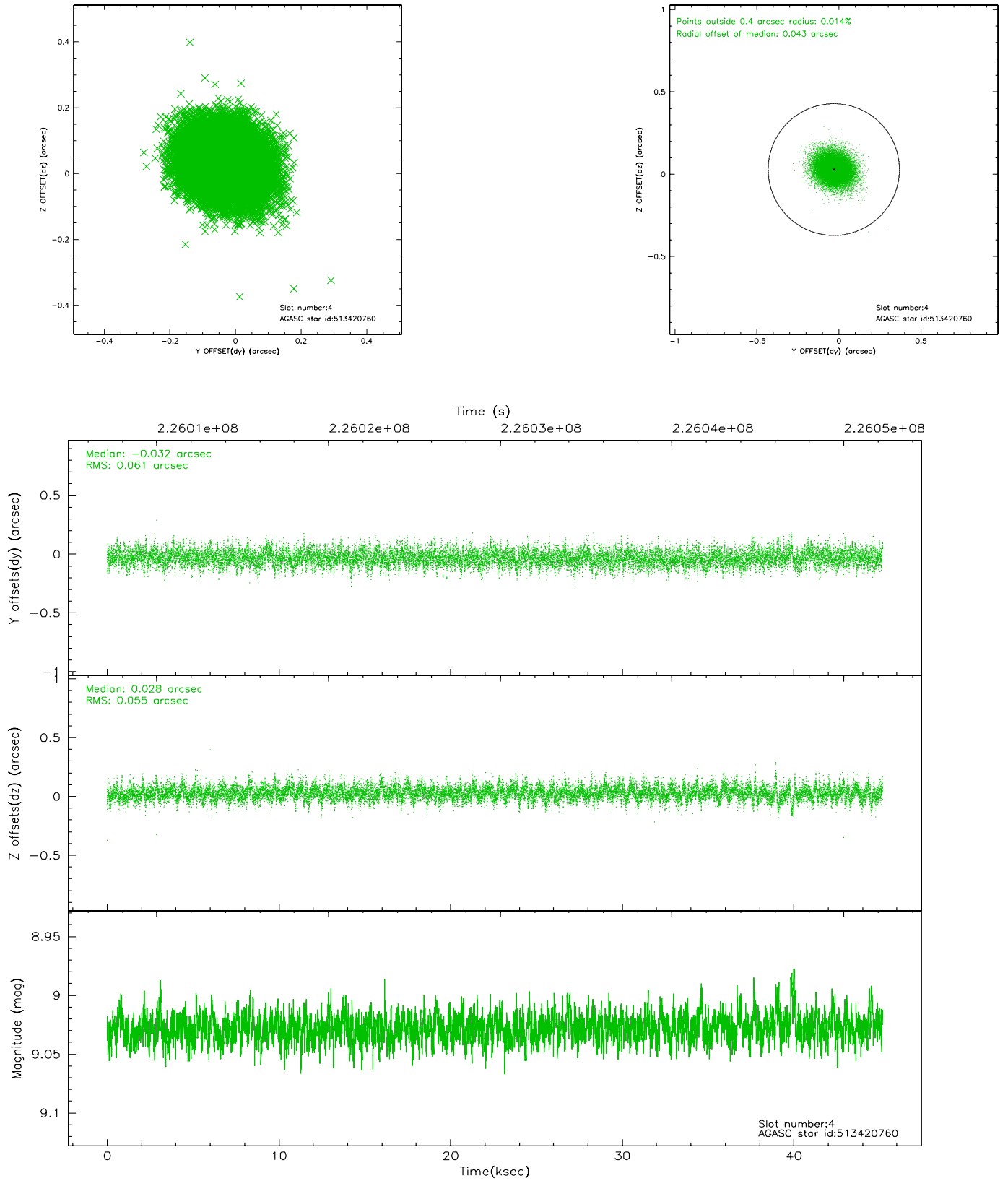
slot	status	id	mag	n_pts	med_dy	med_dz	dr1	dr2	ra	dec	mean_y	mean_z
0	FID	HRC-S-1	7.02	11021	0.112	-0.159	0.031	0.041	0.000000	0.000000	-1160.44	-457.29
1	FID	HRC-S-2	7.03	11020	0.158	-0.104	0.012	0.021	0.000000	0.000000	1239.18	-449.91
2	FID	HRC-S-3	7.04	11018	0.121	-0.039	0.038	0.048	0.000000	0.000000	-1163.05	572.31
3	GUIDE	513417880	8.64	22033	0.034	0.080	0.070	0.113	279.584245	59.253862	-23.74	-1086.89
4	GUIDE	513420760	9.03	22021	-0.032	0.028	0.087	0.144	277.675033	59.117633	-2070.53	1819.44
5	GUIDE	513422640	8.02	22035	-0.030	-0.010	0.071	0.114	277.976729	59.419970	-848.95	1809.04
6	GUIDE	513419672	8.92	22034	0.006	-0.058	0.102	0.162	278.251329	59.888562	882.32	2123.26
7	GUIDE	515114104	9.37	22017	0.027	-0.040	0.116	0.194	280.808618	59.672771	2371.85	-2332.51

2.4 Star Slots

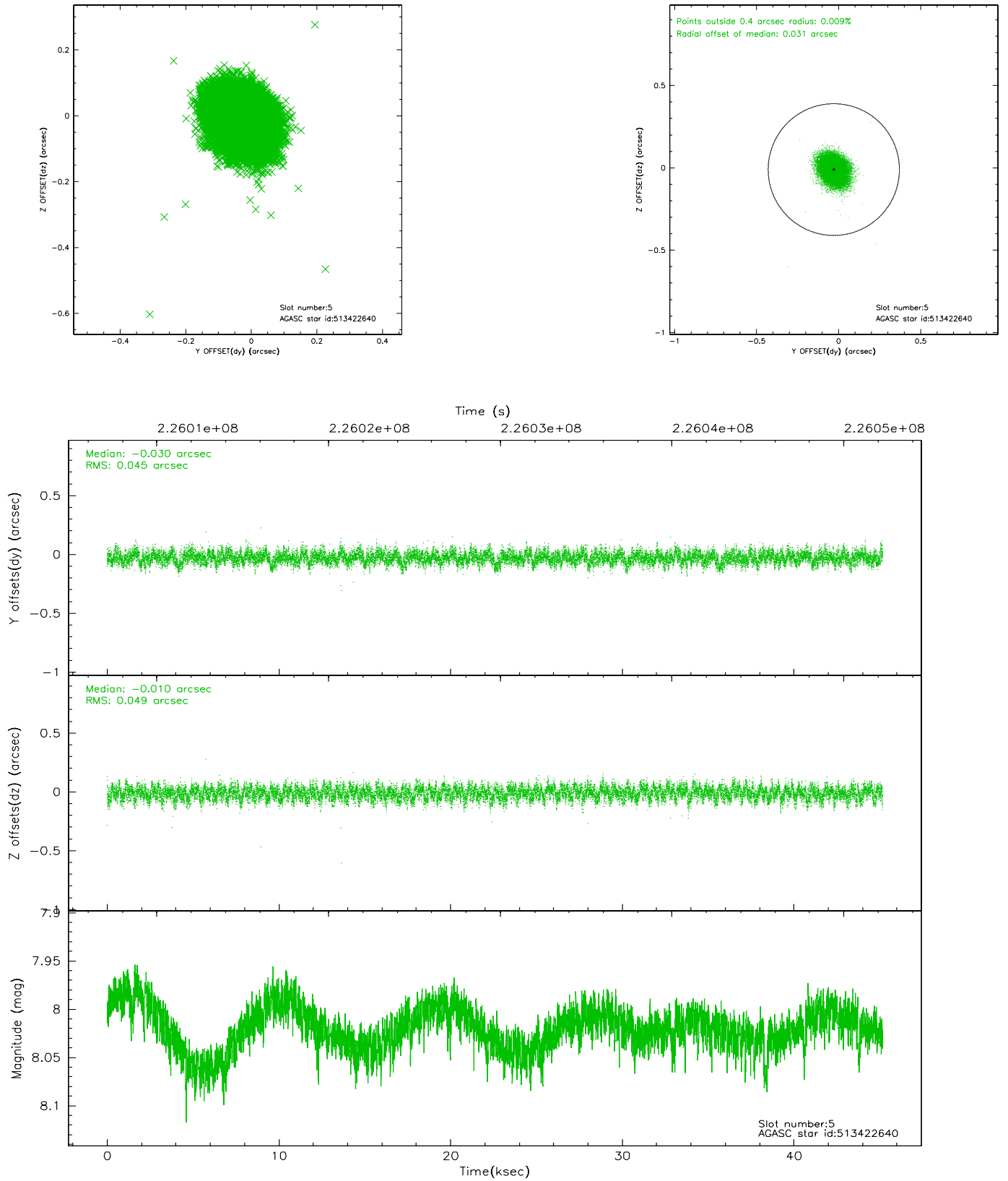
2.4.1 Slot 3



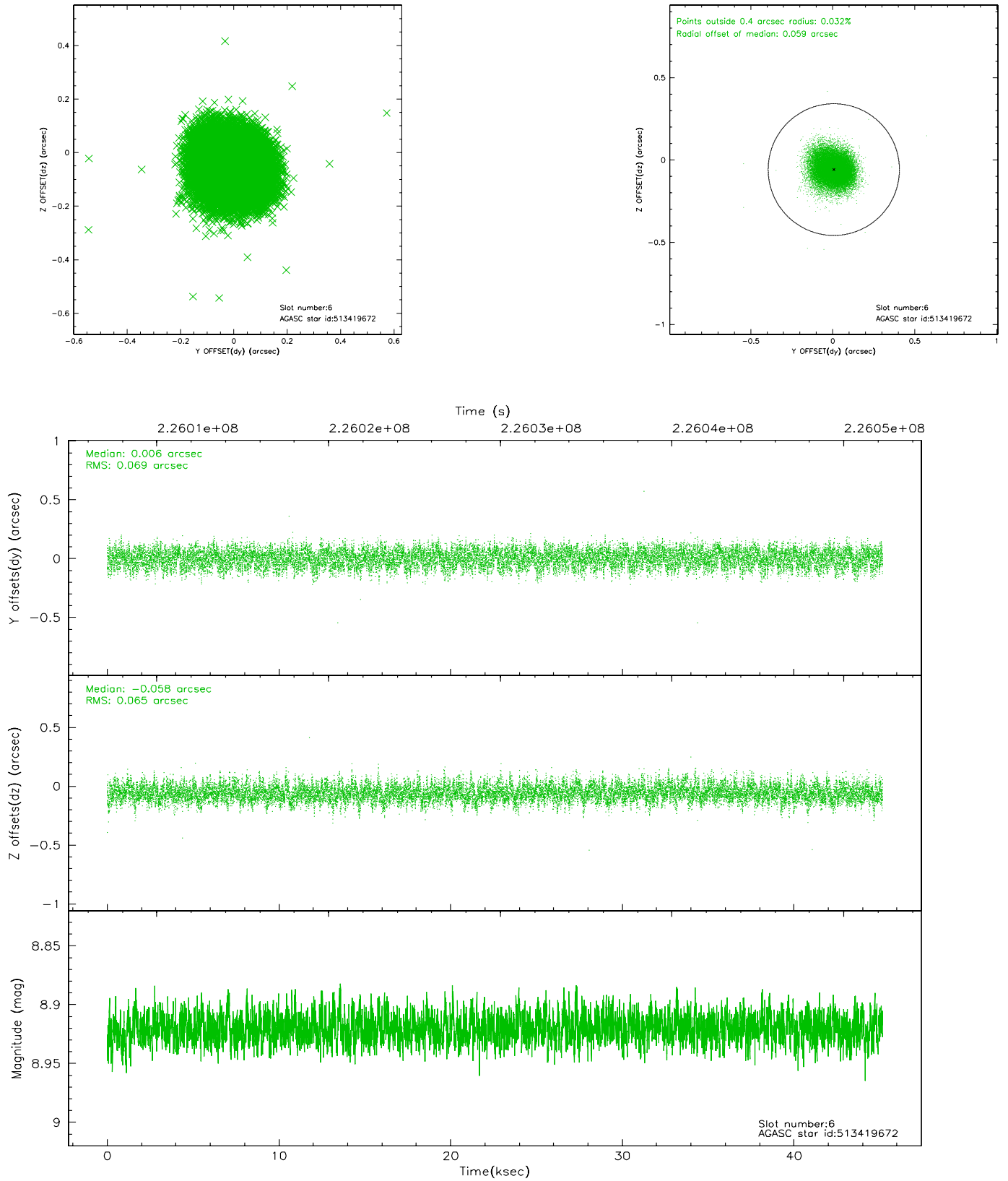
2.4.2 Slot 4



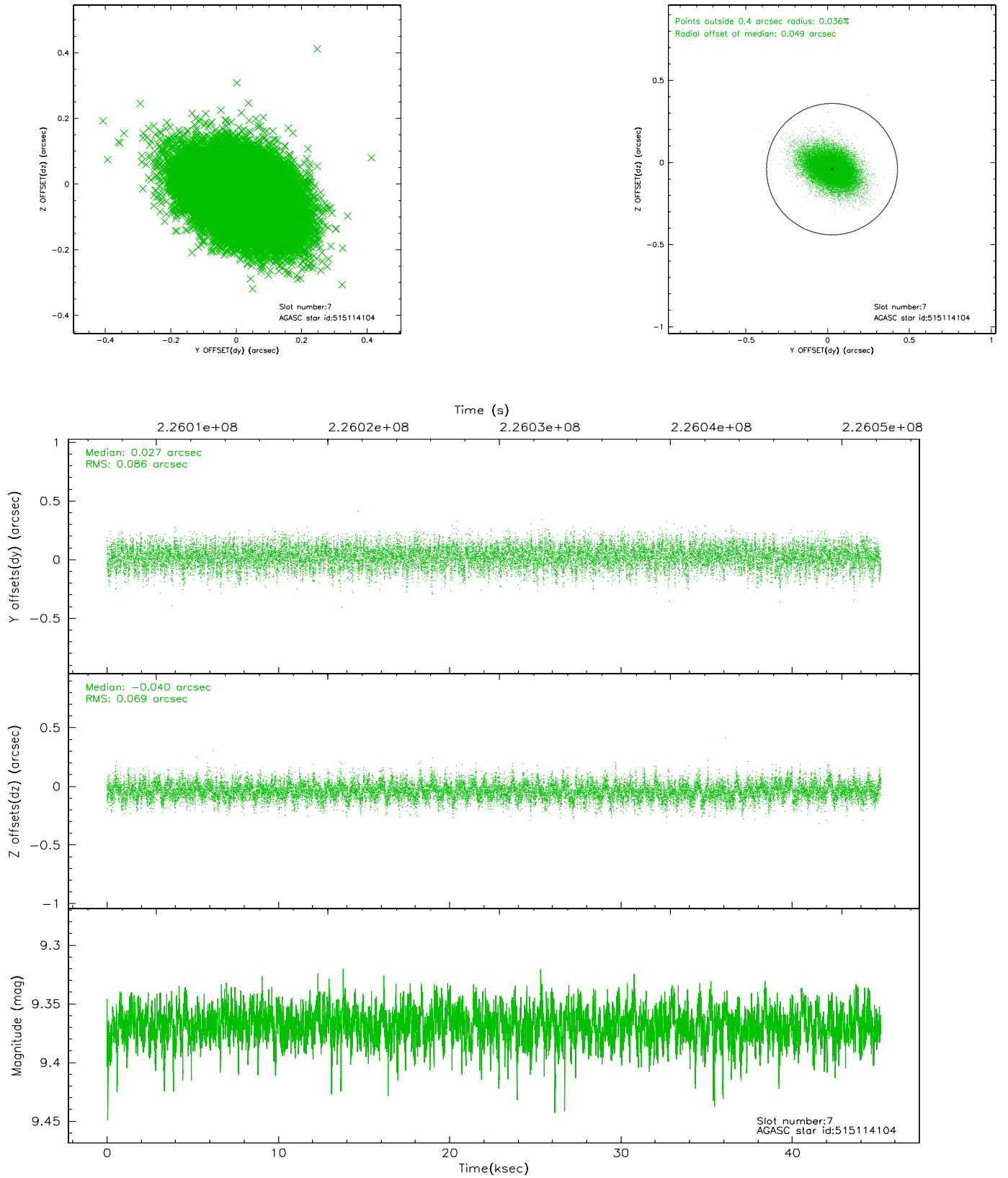
2.4.3 Slot 5



2.4.4 Slot 6

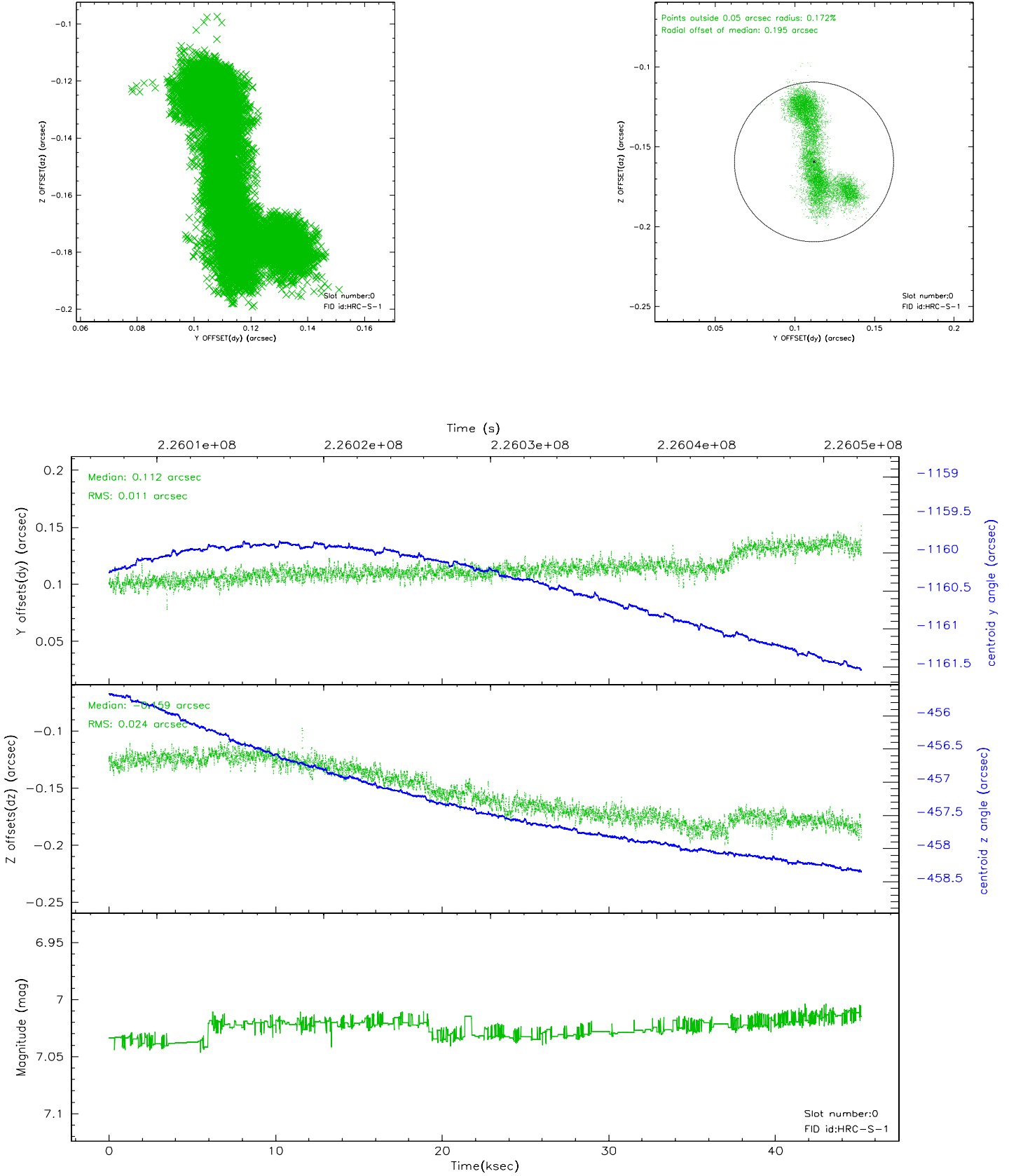


2.4.5 Slot 7

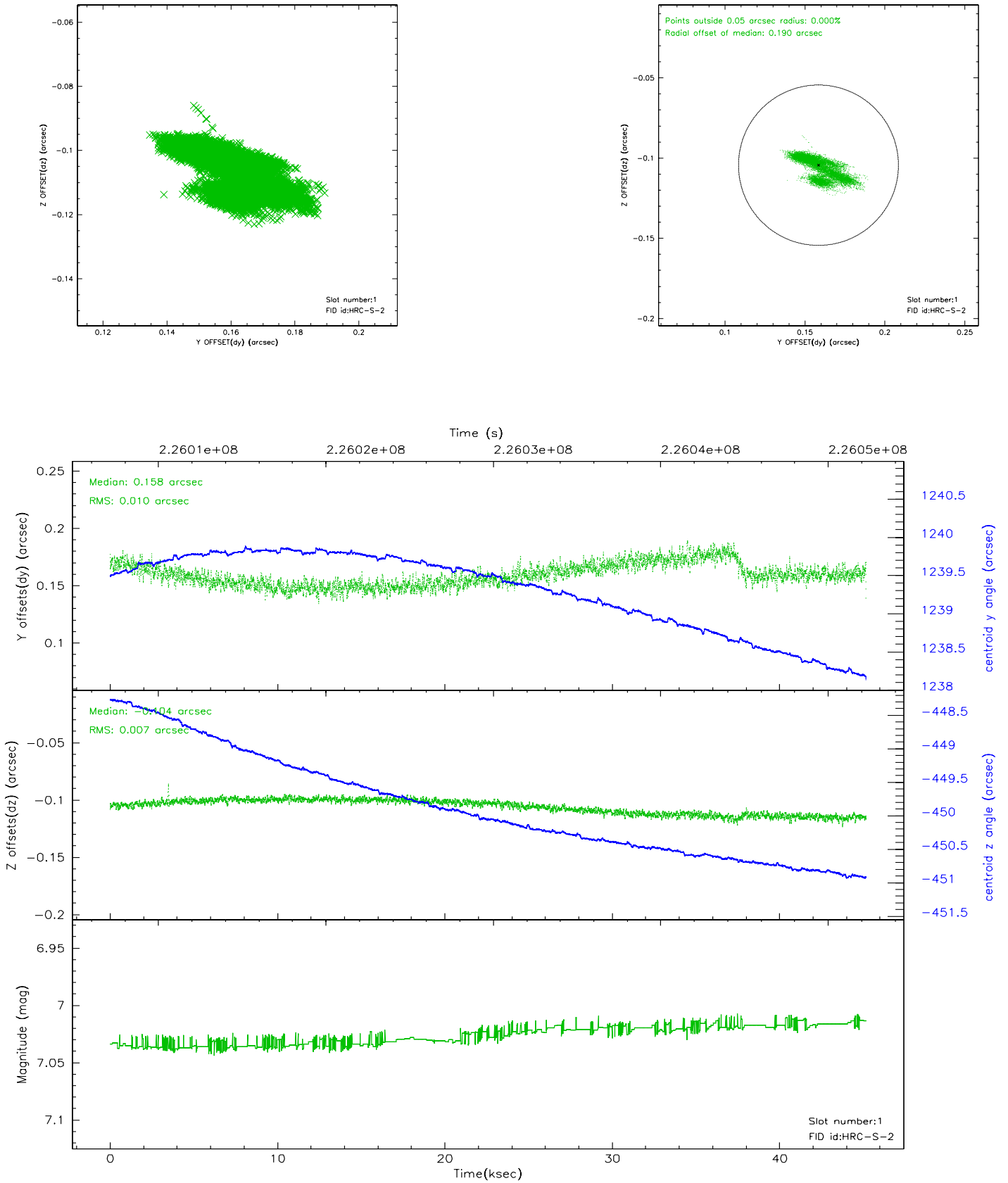


2.5 FID Slots

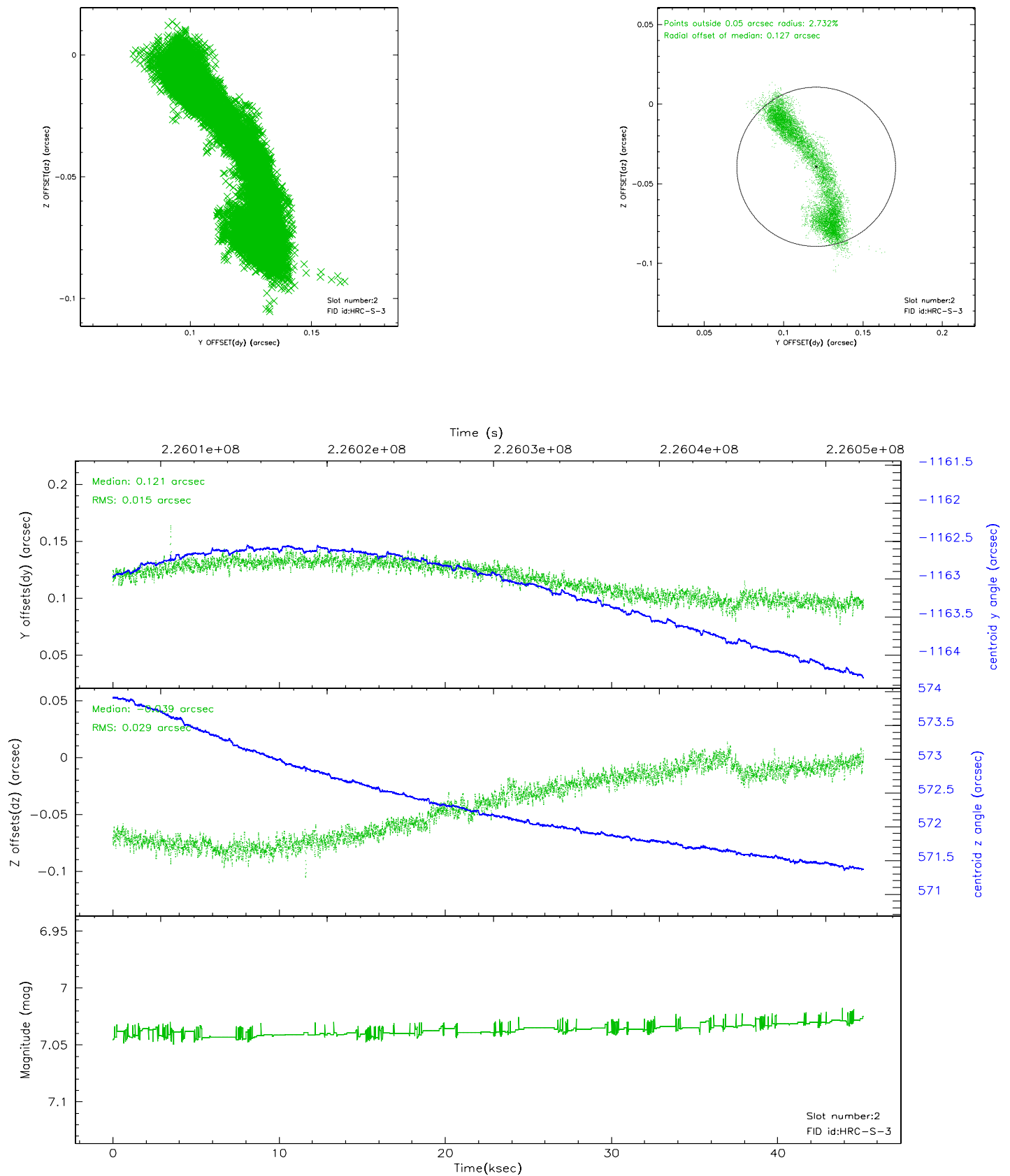
2.5.1 Slot 0



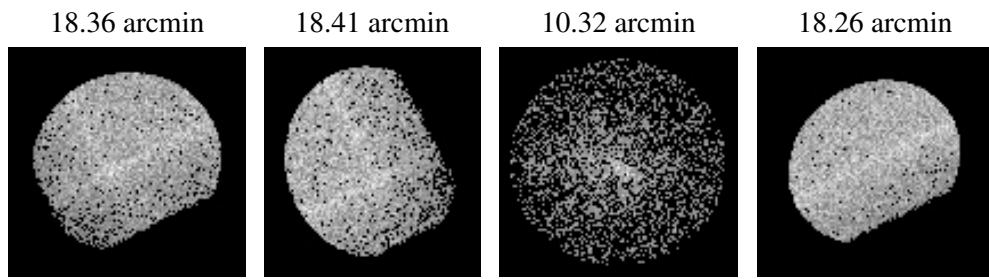
2.5.2 Slot 1



2.5.3 Slot 2



3 Point Sources



A Summary

A.1 Status

V&V Scientist	Beth Sundheim
V&V Date (YYYY-MM-DD)	2006.02.27
V&V Edition	1
V&V Disposition and Status	OK
V&V Charge Time	45.18123

A.2 Comments