

V&V Reference Report

L2 ASCDS Version : 7.6.9

Observation 61782 - L2 Version 001
Chandra X-Ray Center

L2 Processing Date : Nov 2 2006

Contents

1	Front	2
2	OBI	3
2.1	OBI	3
2.1.1	Images	3
2.1.2	Bias	3
2.1.3	Parameters	4
2.1.4	Events	4
2.2	Compared Parameters	5
2.3	Aspect	6
2.4	Star Slots	8
2.5	FID Slots	8
A	Summary	9
A.1	Status	9
A.2	Comments	9

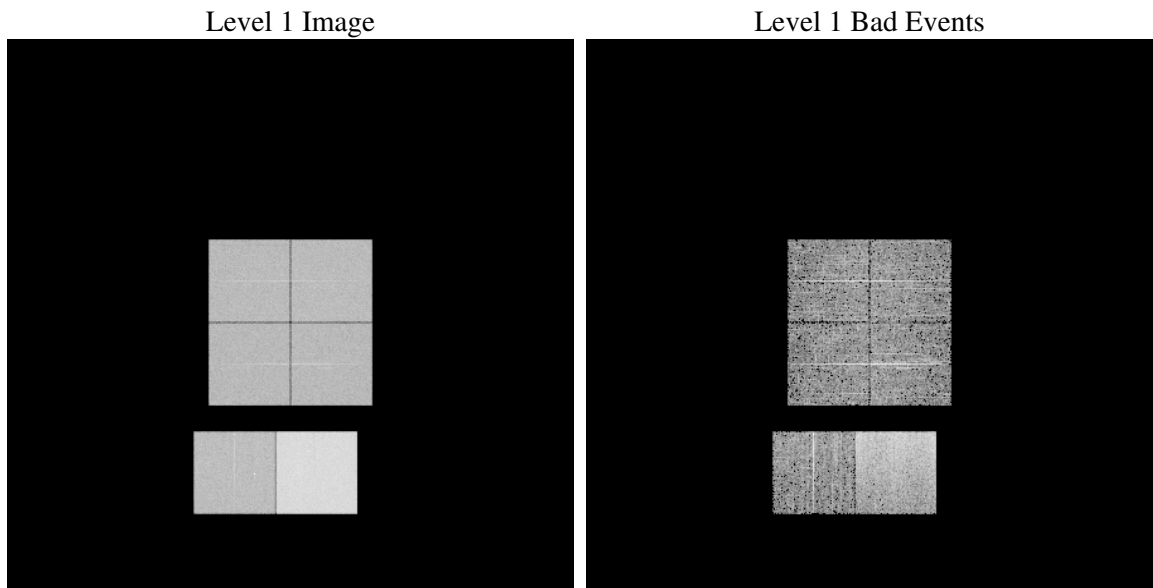
1 Front

seq_num	
obs_id	61782
title	ACIS-012367 diagnostics
observer	CHANDRA engineering request/realtime commanding
object	
dtcycle	0
cycle	P
ra_targ	0.0
dec_targ	0.0
ra_nom	353.99115490148
dec_nom	32.408544420116
roll_nom	303.88688000809
revision	3
ontime	6246.2812464088
livetime	6167.1870722078
ontime0	2672.0969648361
ontime1	2752.4940900356
ontime2	2552.260943979
ontime3	2539.1325342357
ontime6	2801.8615249544
ontime7	6246.2812464088
l2events	1343791

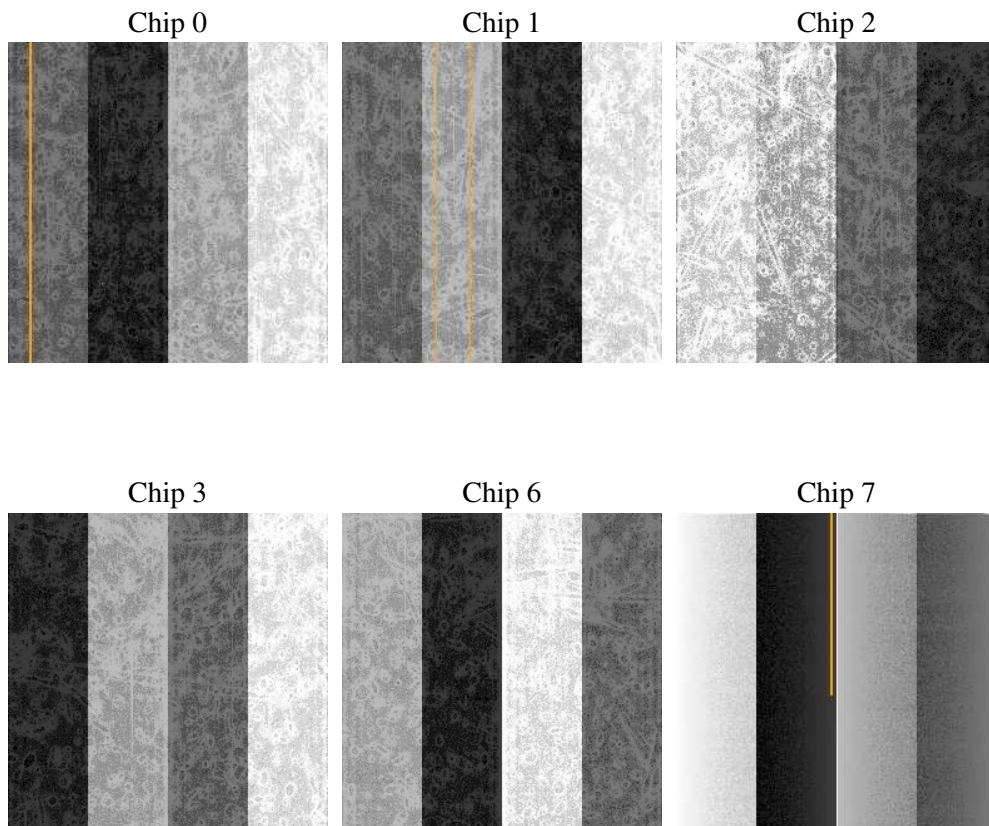
2 OBI

2.1 OBI

2.1.1 Images



2.1.2 Bias



2.1.3 Parameters

obi_num	0
ascdsver	7.6.9
caldbver	3.2.3
date	2006-11-03T01:11:26
revision	3

sched_exp_time	0.0
ontime	6248.6687163711
ontime0	2673.8553708941
ontime1	2754.8815599978
ontime2	2553.9372700453
ontime3	2540.9730203003
ontime6	2803.4968110174
ontime7	6248.6687163711
l1events	1551192

2.1.4 Events

	ccd 0	ccd 1	ccd 2	ccd 3	ccd 6	ccd 7
level 1 events	210081	216634	203045	203548	230183	487701
rejected events	20357	20544	19802	21251	21448	45822
rejected %	9%	9%	9%	10%	9%	9%

	ccd 0	ccd 1	ccd 2	ccd 3	ccd 6	ccd 7
grade 0 events	104524	108513	102329	102382	113855	84346
	49%	50%	50%	50%	49%	17%
grade 1 events	546	520	530	561	590	216
	0%	0%	0%	0%	0%	0%
grade 2 events	33649	34465	32097	31620	36200	131153
	16%	15%	15%	15%	15%	26%
grade 3 events	12141	12367	11579	11639	12767	33906
	5%	5%	5%	5%	5%	6%
grade 4 events	12041	12365	11464	11460	12939	33483
	5%	5%	5%	5%	5%	6%
grade 5 events	1526	1493	1453	1515	1737	6886
	0%	0%	0%	0%	0%	1%
grade 6 events	27615	28624	25993	25437	33186	159206
	13%	13%	12%	12%	14%	32%
grade 7 events	18039	18287	17600	18934	18909	38505
	8%	8%	8%	9%	8%	7%

2.2 Compared Parameters

Parameter	Planned	Actual	Parameter	Planned	Actual
Instrument	ACIS	ACIS	Obspar format version number	6	6
Detector	ACIS-012367	ACIS-012367	Obspar file type	PREDICTED	ACTUAL
Grating	NONE	NONE	Obspar update status	NONE	UPDATED
Data mode	FAINT	FAINT	On-chip summing requested	N	N
Observation mode	SECONDARY	SECONDARY	Subarray requested	NONE	NONE
Pointing RA	0	353.9911549014811	Alternating exposures requested	N	N
Pointing Dec	0	32.40854442011639	Primary exposure time	0.000000	3.2
Pointing Roll	0.0	303.8868800080885			
SIM focus pos (mm)	-0.782348	-0.6828225247311905			
SIM defocus (mm)	0	0.8505141146731063			
SIM translation stage pos (mm)	-233.592463	250.4635187648994			
SIM translation stage offset (mm)	0	-0.007540371344731511			
Observation start time	95518348.289	95518347.52035999			
Observation start date	2001-01-10T12:52:28	2001-01-10T12:52:27			
Observation end time	95540820.39	95540819.621222			
Observation end date	2001-01-10T19:07:00	2001-01-10T19:06:59			
Read mode	TIMED	TIMED			

2.3 Aspect

2.4 Star Slots

2.5 FID Slots

A Summary

A.1 Status

V&V Scientist	Doug Morgan
V&V Date (YYYY-MM-DD)	2006.11.03
V&V Edition	1
V&V Disposition and Status	OK
V&V Charge Time	6.24628124

A.2 Comments