

# V&V Reference Report

## L2 ASCDS Version : 8.4.5

Observation 61612 - L2 Version 3  
Chandra X-Ray Center

L2 Processing Date : Oct 18 2012

## Contents

<b>1</b>	<b>Front</b>	<b>2</b>
<b>2</b>	<b>OBI</b>	<b>3</b>
2.1	OBI . . . . .	3
2.1.1	Images . . . . .	3
2.1.2	Bias . . . . .	3
2.1.3	Parameters . . . . .	4
2.1.4	Events . . . . .	4
2.2	Compared Parameters . . . . .	5
2.3	Star Slots . . . . .	6
2.4	FID Slots . . . . .	6
<b>A</b>	<b>Summary</b>	<b>7</b>
A.1	Status . . . . .	7
A.2	Comments . . . . .	7

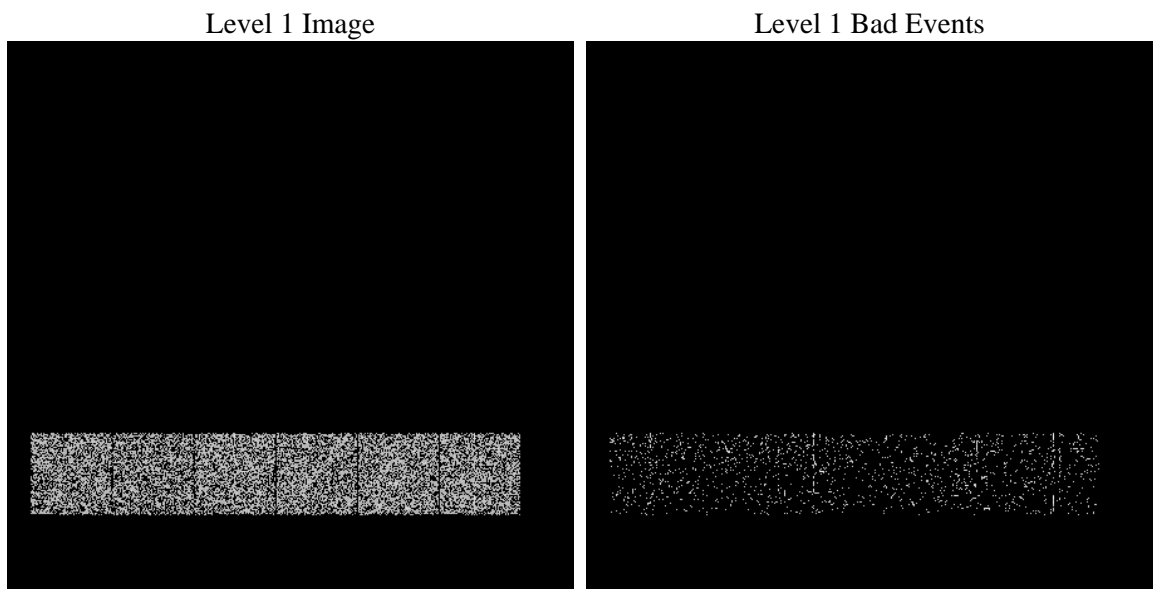
# 1 Front

seq_num	&#160	Sequence number
obs_id	61612	Observation id
title	ACIS-456789 diagnostics	Proposal title
observer	CHANDRA engineering request/realtime commanding	Principal investig
object	&#160	Source name
dtcycle	0	&#160
cycle	P	events from which exps? Prim/Second/Both
ra_targ	0.0	Observer's specified target RA [deg]
dec_targ	0.0	Observer's specified target Dec [deg]
ra_nom	185.99925235277	Nominal RA [deg]
dec_nom	25.971287932937	Nominal Dec [deg]
roll_nom	235.99429492374	Nominal Roll [deg]
revision	3	Processing version of data
ontime	51.200000032783	Sum of GTIs [s]
livetime	50.551674803429	Livetime [s]
ontime4	51.200000032783	Sum of GTIs [s]
ontime5	51.200000032783	Sum of GTIs [s]
ontime6	51.200000032783	Sum of GTIs [s]
ontime7	51.200000032783	Sum of GTIs [s]
ontime8	51.200000032783	Sum of GTIs [s]
ontime9	51.200000032783	Sum of GTIs [s]
l2events	18997	Number of level 2 events

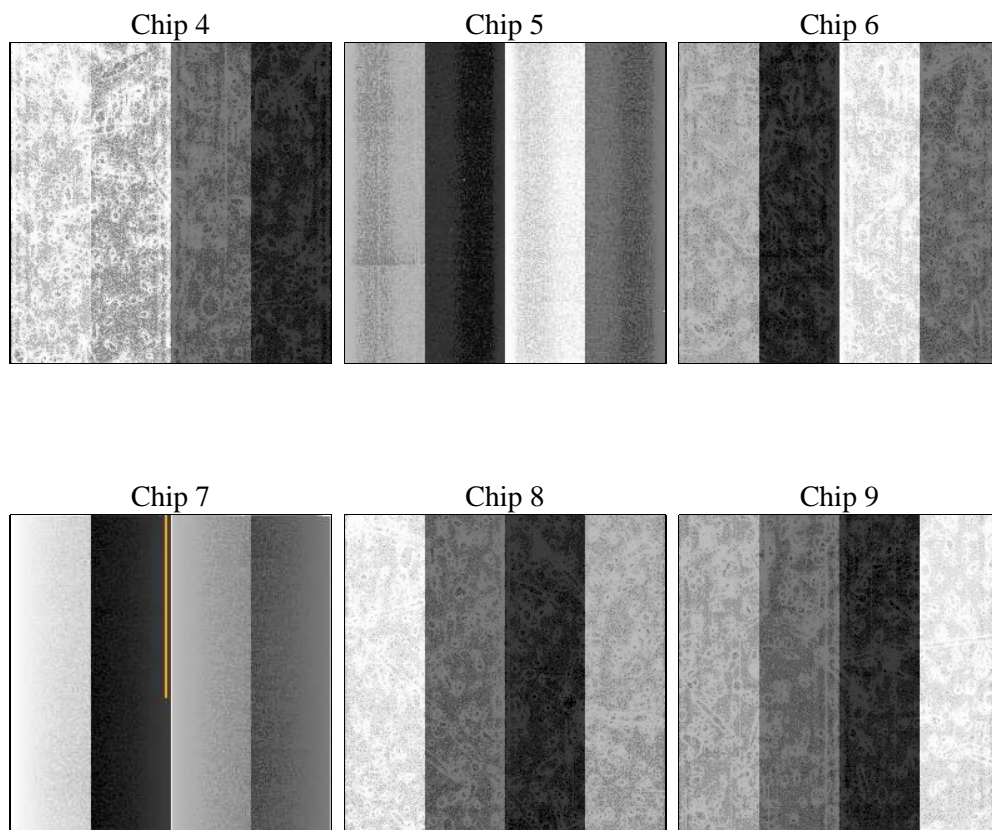
## 2 OBI

### 2.1 OBI

#### 2.1.1 Images



#### 2.1.2 Bias



### 2.1.3 Parameters

obi_num	0	Obi number	sched_exp_time	0.0	[s] Scheduled observation exposure time
ascdsver	8.4.5	Processing system revision	ontime	51.200000032783	Sum of GTIs [s]
caldsver	4.5.2	&#160	ontime4	51.200000032783	Sum of GTIs [s]
date	2012-10-18T17:56:08	Date and time of file creation	ontime5	51.200000032783	Sum of GTIs [s]
revision	3	Processing version of data	ontime6	51.200000032783	Sum of GTIs [s]
			ontime7	51.200000032783	Sum of GTIs [s]
			ontime8	51.200000032783	Sum of GTIs [s]
			ontime9	51.200000032783	Sum of GTIs [s]
			l1events	22352	Number of level 1 events

### 2.1.4 Events

	ccd 4	ccd 5	ccd 6	ccd 7	ccd 8	ccd 9
level 1 events	3628	3374	3892	3734	3902	3822
rejected events	386	323	439	253	416	385
rejected %	10%	9%	11%	6%	10%	10%

	ccd 4	ccd 5	ccd 6	ccd 7	ccd 8	ccd 9
grade 0 events	1813	783	1917	857	1884	1931
	49%	23%	49%	22%	48%	50%
grade 1 events	10	6	9	0	9	6
	0%	0%	0%	0%	0%	0%
grade 2 events	585	1070	561	779	648	614
	16%	31%	14%	20%	16%	16%
grade 3 events	197	203	248	346	234	204
	5%	6%	6%	9%	5%	5%
grade 4 events	193	192	213	346	229	210
	5%	5%	5%	9%	5%	5%
grade 5 events	29	70	38	56	35	34
	0%	2%	0%	1%	0%	0%
grade 6 events	454	803	514	1153	491	478
	12%	23%	13%	30%	12%	12%
grade 7 events	347	247	392	197	372	345
	9%	7%	10%	5%	9%	9%

## 2.2 Compared Parameters

Parameter	Planned	Actual	Parameter	Planned	Actual
Instrument	ACIS	ACIS	Obspar format version number	7	7
Detector	ACIS-456789	ACIS-456789	Obspar file type	PREDICTED	ACTUAL
Grating	NONE	NONE	Obspar update status	NONE	UPDATED
Data mode	FAINT	FAINT	On-chip summing requested	N	N
Observation mode	SECONDARY	SECONDARY	Subarray requested	NONE	NONE
[deg] Pointing RA	0	185.9992523527694	Alternating exposures requested	N	N
[deg] Pointing Dec	0	25.97128793293706	[s] Primary exposure time	0.000000	3.2
[deg] Pointing Roll	0.0	235.9942949237401			
[mm] SIM focus pos	-0.684267	-0.7809083437167272			
[mm] SIM defocus	0	0.7524282956875696			
[mm] SIM translation stage pos	-190.132523	250.466033080201			
[mm] SIM translation stage offset	0	-0.01005468664627074			
[s] Observation start time (MET)	107397108.598	107397107.82973			
Observation start date	2001-05-28T00:31:49	2001-05-28T00:31:47			
[s] Observation end time (MET)	107411692.299	107411691.53029			
Observation end date	2001-05-28T04:34:52	2001-05-28T04:34:51			
Read mode	TIMED	TIMED			

## **2.3 Star Slots**

## **2.4 FID Slots**

## A Summary

### A.1 Status

V&V Scientist	Joy Nichols
V&V Date (YYYY-MM-DD)	2013.01.16
V&V Edition	1
V&V Disposition and Status	OK
V&V Charge Time	0.051200000032783

### A.2 Comments