

V&V Reference Report

L2 ASCDS Version : 7.6.9

Observation 61612 - L2 Version 001
Chandra X-Ray Center

L2 Processing Date : Dec 18 2006

Contents

1	Front	2
2	OBI	3
2.1	OBI	3
2.1.1	Images	3
2.1.2	Bias	3
2.1.3	Parameters	4
2.1.4	Events	4
2.2	Compared Parameters	5
2.3	Aspect	6
2.4	Star Slots	8
2.5	FID Slots	8
A	Summary	9
A.1	Status	9
A.2	Comments	9

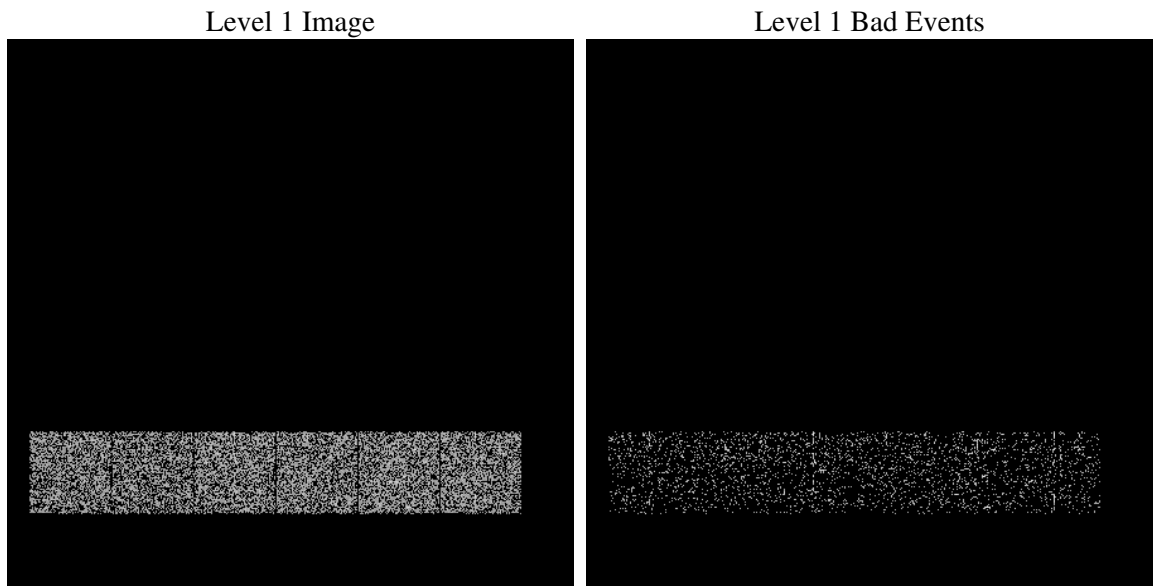
1 Front

seq_num	
obs_id	61612
title	ACIS-456789 diagnostics
observer	CHANDRA engineering request/realtime commanding
object	
dtcycle	0
cycle	P
ra_targ	0.0
dec_targ	0.0
ra_nom	185.99925235277
dec_nom	25.971287932937
roll_nom	235.99429492374
revision	2
ontime	50.062753483653
livetime	49.428828754872
ontime4	50.185873478651
ontime5	50.103793486953
ontime6	50.144833475351
ontime7	50.062753483653
ontime8	50.226913481951
ontime9	50.021713480353
l2events	17660

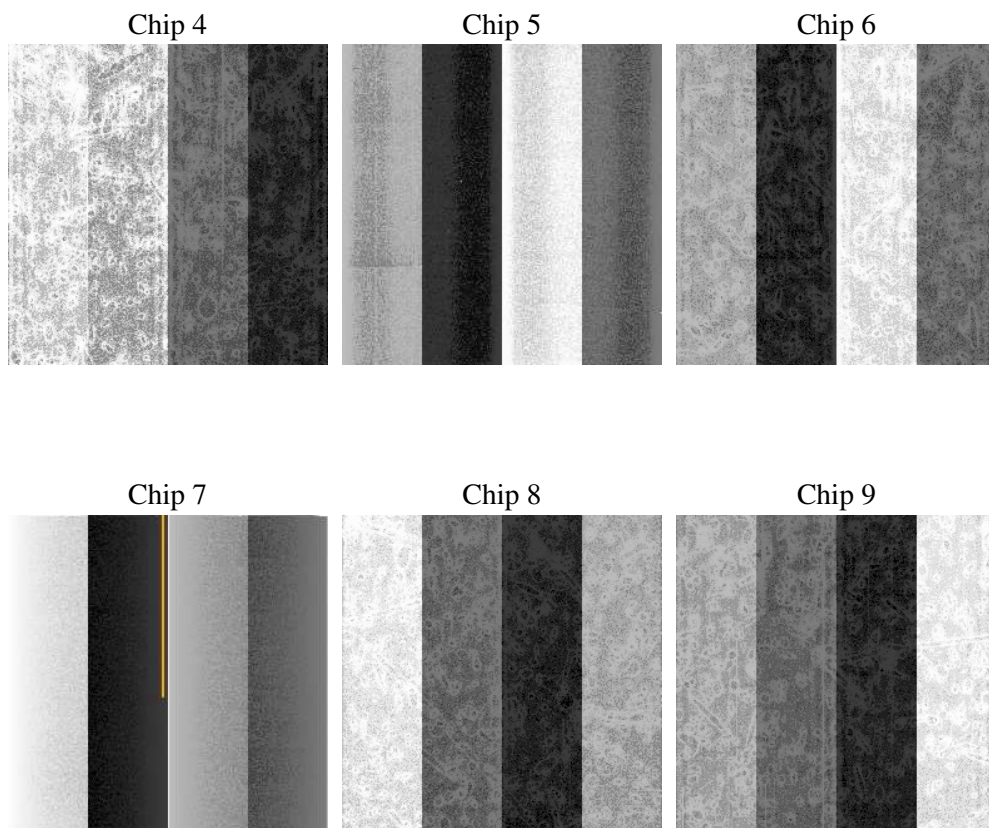
2 OBI

2.1 OBI

2.1.1 Images



2.1.2 Bias



2.1.3 Parameters

obi_num	0
ascdsver	7.6.9
caldsver	3.2.4
date	2006-12-18T17:05:40
revision	2

sched_exp_time	0.0
ontime	51.856041818857
ontime4	51.856041818857
ontime5	51.856041818857
ontime6	51.856041818857
ontime7	51.856041818857
ontime8	51.856041818857
ontime9	51.856041818857
l1events	22352

2.1.4 Events

	ccd 4	ccd 5	ccd 6	ccd 7	ccd 8	ccd 9
level 1 events	3628	3374	3892	3734	3902	3822
rejected events	581	630	640	576	634	584
rejected %	16%	18%	16%	15%	16%	15%

	ccd 4	ccd 5	ccd 6	ccd 7	ccd 8	ccd 9
grade 0 events	1813	403	1917	604	1884	1931
	49%	11%	49%	16%	48%	50%
grade 1 events	10	5	9	0	9	6
	0%	0%	0%	0%	0%	0%
grade 2 events	585	1411	561	1007	648	614
	16%	41%	14%	26%	16%	16%
grade 3 events	197	90	248	251	234	204
	5%	2%	6%	6%	5%	5%
grade 4 events	193	96	213	257	229	210
	5%	2%	5%	6%	5%	5%
grade 5 events	29	50	38	61	35	34
	0%	1%	0%	1%	0%	0%
grade 6 events	454	959	514	1238	491	478
	12%	28%	13%	33%	12%	12%
grade 7 events	347	360	392	316	372	345
	9%	10%	10%	8%	9%	9%

2.2 Compared Parameters

Parameter	Planned	Actual	Parameter	Planned	Actual
Instrument	ACIS	ACIS	Obspar format version number	6	6
Detector	ACIS-456789	ACIS-456789	Obspar file type	PREDICTED	ACTUAL
Grating	NONE	NONE	Obspar update status	NONE	UPDATED
Data mode	FAINT	FAINT	On-chip summing requested	N	N
Observation mode	SECONDARY	SECONDARY	Subarray requested	NONE	NONE
Pointing RA	0	185.9992523527694	Alternating exposures requested	N	N
Pointing Dec	0	25.97128793293706	Primary exposure time	0.000000	3.2
Pointing Roll	0.0	235.9942949237401			
SIM focus pos (mm)	-0.684267	-0.7809083437167272			
SIM defocus (mm)	0	0.7524282956875696			
SIM translation stage pos (mm)	-190.132523	250.466033080201			
SIM translation stage offset (mm)	0	-0.01005468664627074			
Observation start time	107397108.598	107397107.82973			
Observation start date	2001-05-28T00:31:49	2001-05-28T00:31:47			
Observation end time	107411692.299	107411691.53029			
Observation end date	2001-05-28T04:34:52	2001-05-28T04:34:51			
Read mode	TIMED	TIMED			

2.3 Aspect

2.4 Star Slots

2.5 FID Slots

A Summary

A.1 Status

V&V Scientist	Beth Sundheim
V&V Date (YYYY-MM-DD)	2006.12.18
V&V Edition	1
V&V Disposition and Status	OK
V&V Charge Time	0.05006275

A.2 Comments