

V&V Reference Report

L2 ASCDS Version : 7.6.9

Observation 61592 - L2 Version 001
Chandra X-Ray Center

L2 Processing Date : Nov 28 2006

Contents

1	Front	2
2	OBI	3
2.1	OBI	3
2.1.1	Images	3
2.1.2	Bias	3
2.1.3	Parameters	4
2.1.4	Events	4
2.2	Compared Parameters	5
2.3	Aspect	6
2.4	Star Slots	8
2.5	FID Slots	8
A	Summary	9
A.1	Status	9
A.2	Comments	9

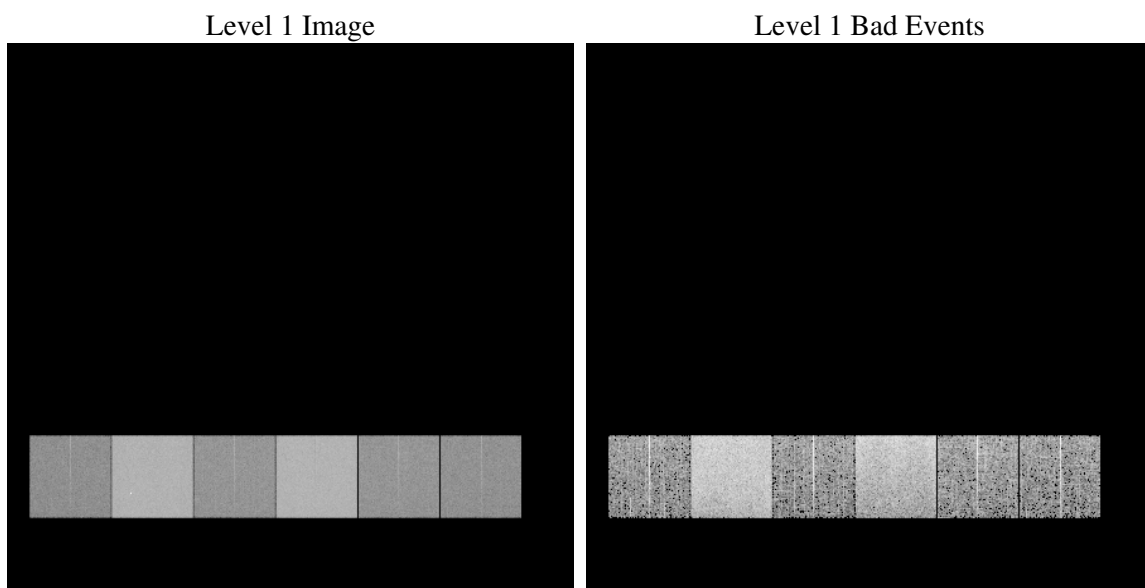
1 Front

seq_num	
obs_id	61592
title	ACIS-456789 diagnostics
observer	CHANDRA engineering request/realtime commanding
object	
dtcycle	0
cycle	P
ra_targ	0.0
dec_targ	0.0
ra_nom	154.00248785553
dec_nom	-24.028563171027
roll_nom	241.87055153591
revision	2
ontime	5967.5996116698
livetime	5892.0342721297
ontime4	2296.527118817
ontime5	6447.2610300332
ontime6	2565.4919594526
ontime7	5967.5996116698
ontime8	2542.8868791163
ontime9	2413.0400894284
l2events	1312719

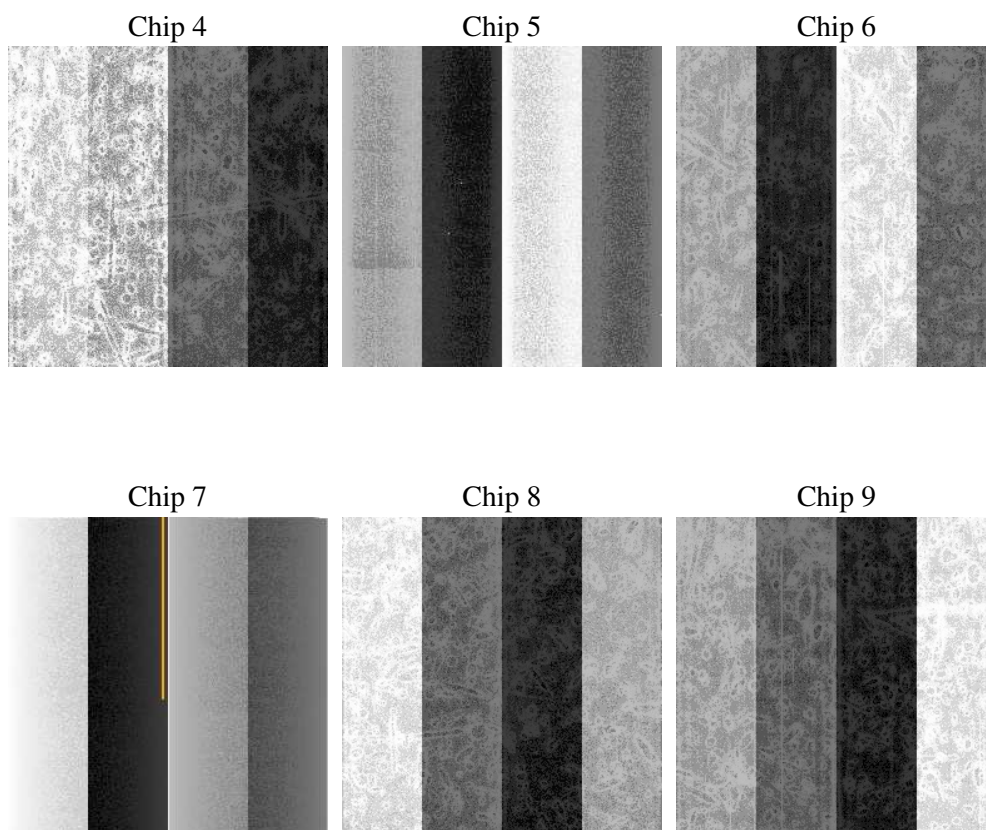
2 OBI

2.1 OBI

2.1.1 Images



2.1.2 Bias



2.1.3 Parameters

obi_num	0
ascdsver	7.6.9
caldsver	3.2.4
date	2006-11-28T08:03:42
revision	2

sched_exp_time	0.0
ontime	5969.947266534
ontime4	2297.8953701258
ontime5	6449.6086848974
ontime6	2566.9012507647
ontime7	5969.947266534
ontime8	2544.2140904218
ontime9	2414.5725007355
l1events	1550272

2.1.4 Events

	ccd 4	ccd 5	ccd 6	ccd 7	ccd 8	ccd 9
level 1 events	161348	411930	190871	422776	190636	172711
rejected events	19782	56528	19797	43981	21644	19176
rejected %	12%	13%	10%	10%	11%	11%

	ccd 4	ccd 5	ccd 6	ccd 7	ccd 8	ccd 9
grade 0 events	80092	43573	93325	72082	93397	84119
	49%	10%	48%	17%	48%	48%
grade 1 events	446	136	482	176	465	415
	0%	0%	0%	0%	0%	0%
grade 2 events	25049	171528	29841	112179	29619	27194
	15%	41%	15%	26%	15%	15%
grade 3 events	8710	12269	10552	28918	10918	9514
	5%	2%	5%	6%	5%	5%
grade 4 events	8586	11741	10366	28671	10618	9533
	5%	2%	5%	6%	5%	5%
grade 5 events	1335	6637	1581	6104	1619	1483
	0%	1%	0%	1%	0%	0%
grade 6 events	19129	116291	26990	136945	24440	23175
	11%	28%	14%	32%	12%	13%
grade 7 events	18001	49755	17734	37701	19560	17278
	11%	12%	9%	8%	10%	10%

2.2 Compared Parameters

Parameter	Planned	Actual	Parameter	Planned	Actual
Instrument	ACIS	ACIS	Obspar format version number	6	6
Detector	ACIS-456789	ACIS-456789	Obspar file type	PREDICTED	ACTUAL
Grating	NONE	NONE	Obspar update status	NONE	UPDATED
Data mode	FAINT	FAINT	On-chip summing requested	N	N
Observation mode	SECONDARY	SECONDARY	Subarray requested	NONE	NONE
Pointing RA	0	154.0024878555334	Alternating exposures requested	N	N
Pointing Dec	0	-24.02856317102653	Primary exposure time	0.000000	3.2
Pointing Roll	0.0	241.8705515359106			
SIM focus pos (mm)	-0.684267	-0.7809083437167272			
SIM defocus (mm)	0	0.7524282956875696			
SIM translation stage pos (mm)	-190.132523	250.466033080201			
SIM translation stage offset (mm)	0	-0.01005468664627074			
Observation start time	108769028.102	108769027.33317			
Observation start date	2001-06-12T21:37:08	2001-06-12T21:37:07			
Observation end time	108790337.852	108790337.084			
Observation end date	2001-06-13T03:32:18	2001-06-13T03:32:17			
Read mode	TIMED	TIMED			

2.3 Aspect

2.4 Star Slots

2.5 FID Slots

A Summary

A.1 Status

V&V Scientist	Jen Lauer
V&V Date (YYYY-MM-DD)	2006.11.28
V&V Edition	1
V&V Disposition and Status	OK
V&V Charge Time	5.96759961

A.2 Comments