

V&V Reference Report

L2 ASCDS Version : 7.6.9

Observation 61492 - L2 Version _e1
Chandra X-Ray Center

L2 Processing Date : Dec 22 2006

Contents

1	Front	2
2	OBI Primary	3
2.1	OBI	3
2.1.1	Images	3
2.1.2	Bias	3
2.1.3	Parameters	4
2.1.4	Events	4
2.2	Compared Parameters	5
2.3	Aspect	6
2.4	Star Slots	8
2.5	FID Slots	8
3	OBI Secondary	8
3.1	OBI	8
3.1.1	Images	8
3.1.2	Bias	8
3.1.3	Parameters	9
3.1.4	Events	9
A	Summary	10
A.1	Status	10
A.2	Comments	10

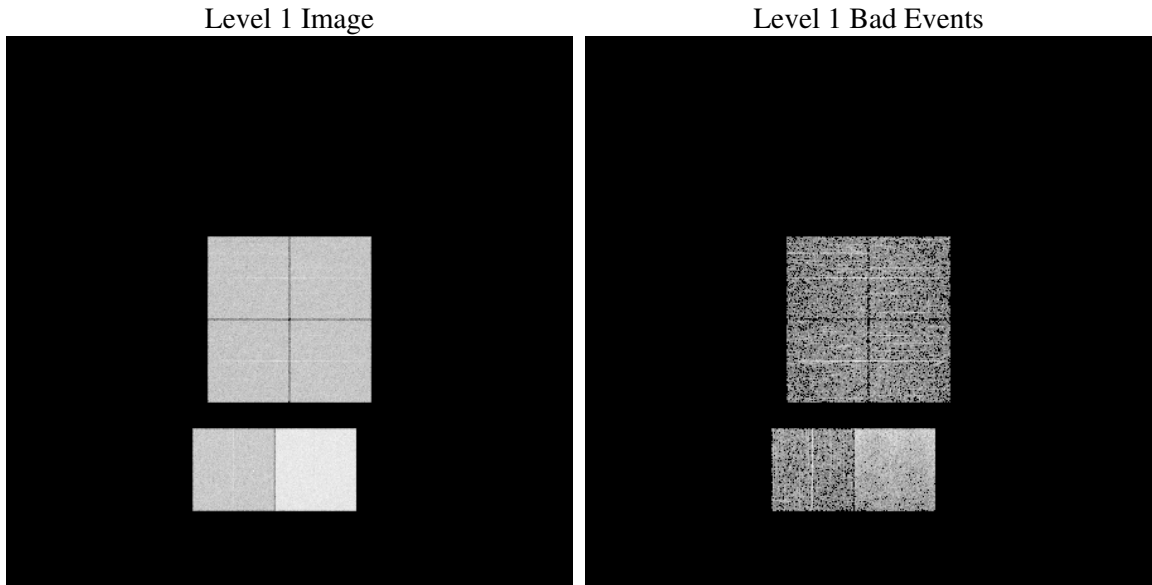
1 Front

seq_num	
obs_id	61492
title	ACIS-012367 diagnostics
observer	CHANDRA engineering request/realtime commanding
object	
dtcycle	0
cycle	P
ra_targ	0.0
dec_targ	0.0
ra_nom	28.095656265188
dec_nom	74.808574489415
roll_nom	129.9380073995
revision	2
ontime	3987.243304044
livetime	3946.7496526082
ontime0	1633.115547955
ontime1	1645.1976279616
ontime2	1582.8245020807
ontime3	1641.0745079666
ontime6	1748.507142216
ontime7	3987.243304044
l2events	713179

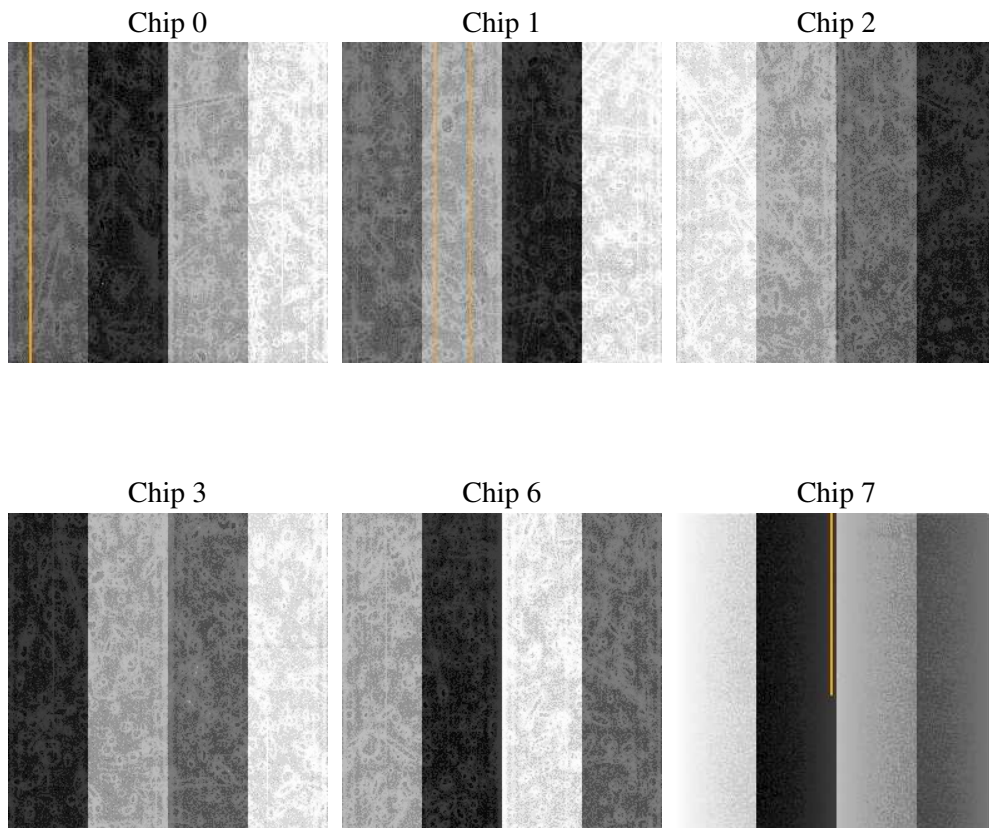
2 OBI Primary

2.1 OBI

2.1.1 Images



2.1.2 Bias



2.1.3 Parameters

obi_num	0
ascdsver	7.6.9
caldbver	3.2.4
date	2006-12-22T04:22:11
revision	2

sched_exp_time	0.0
ontime	3992.5475232601
ontime0	1636.6212013364
ontime1	1648.7443213463
ontime2	1588.1287212968
ontime3	1644.703281343
ontime6	1753.8113614321
ontime7	3992.5475232601
l1events	827060

2.1.4 Events

	ccd 0	ccd 1	ccd 2	ccd 3	ccd 6	ccd 7
level 1 events	108516	109760	107511	111224	122388	267661
rejected events	11043	11250	11638	11584	12630	25529
rejected %	10%	10%	10%	10%	10%	9%

	ccd 0	ccd 1	ccd 2	ccd 3	ccd 6	ccd 7
grade 0 events	53872	54341	53468	55646	60130	47467
	49%	49%	49%	50%	49%	17%
grade 1 events	279	305	302	295	332	120
	0%	0%	0%	0%	0%	0%
grade 2 events	17280	17578	16931	17667	19035	71589
	15%	16%	15%	15%	15%	26%
grade 3 events	6214	6372	6009	6342	6901	19100
	5%	5%	5%	5%	5%	7%
grade 4 events	6118	6317	6079	6295	6951	19071
	5%	5%	5%	5%	5%	7%
grade 5 events	843	819	821	846	993	3834
	0%	0%	0%	0%	0%	1%
grade 6 events	14235	14145	13617	13918	16984	85292
	13%	12%	12%	12%	13%	31%
grade 7 events	9675	9883	10284	10215	11062	21188
	8%	9%	9%	9%	9%	7%

2.2 Compared Parameters

Parameter	Planned	Actual	Parameter	Planned	Actual
Instrument	ACIS	ACIS	Obspar format version number	6	6
Detector	ACIS-012367	ACIS-012367	Obspar file type	PREDICTED	ACTUAL
Grating	NONE	NONE	Obspar update status	NONE	UPDATED
Data mode	FAINT	FAINT	On-chip summing requested	N	N
Observation mode	SECONDARY	SECONDARY	Subarray requested	NONE	NONE
Pointing RA	0	28.09565626518818	Alternating exposures requested	N	Y
Pointing Dec	0	74.80857448941535	Primary exposure time	0.000000	4
Pointing Roll	0.0	129.9380073994987	Secondary exposure time	N/A	3.2
SIM focus pos (mm)	-0.782348	-0.6828225247311905	Duty cycle	N/A	1
SIM defocus (mm)	0	0.8505141146731063			
SIM translation stage pos (mm)	-233.592463	250.466033080201			
SIM translation stage offset (mm)	0	-0.01005468664627074			
Observation start time	115362322.41	115362321.64172			
Observation start date	2001-08-28T05:05:22	2001-08-28T05:05:21			
Observation end time	115385673.961	115385673.19264			
Observation end date	2001-08-28T11:34:34	2001-08-28T11:34:33			
Read mode	TIMED	TIMED			

2.3 Aspect

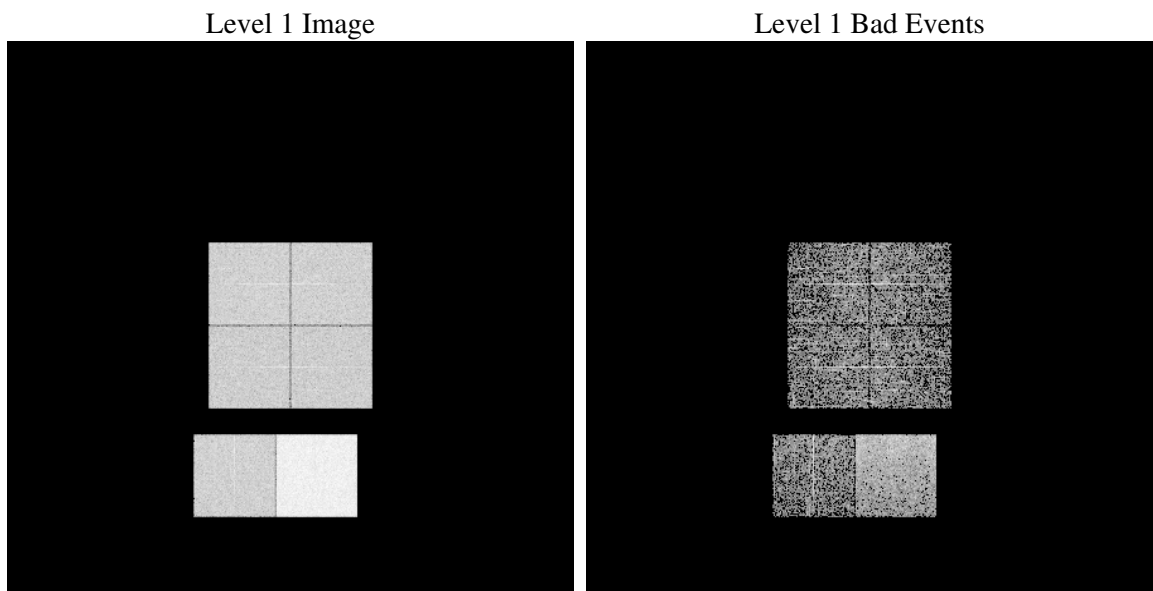
2.4 Star Slots

2.5 FID Slots

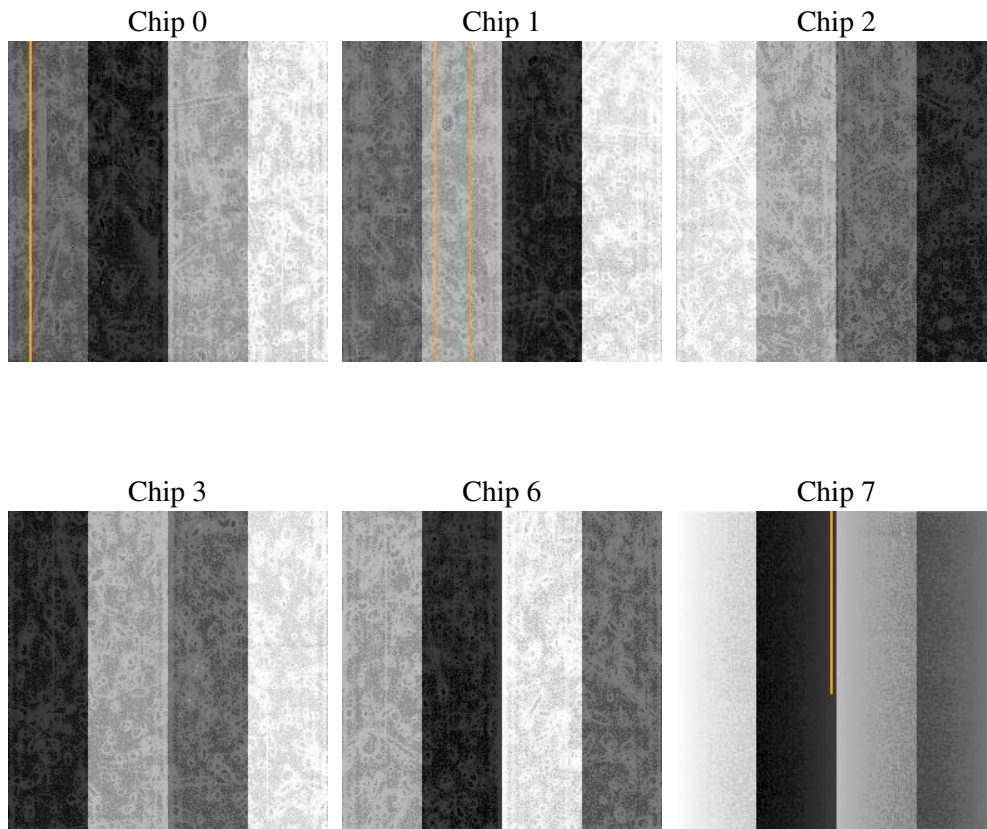
3 OBI Secondary

3.1 OBI

3.1.1 Images



3.1.2 Bias



3.1.3 Parameters

obi_num	0
ascdsver	7.6.9
caldsver	3.2.4
date	2006-12-22T04:20:59
revision	2

sched_exp_time	0.0
ontime	2803.4995925426
ontime0	1244.5593566895
ontime1	1234.8362367153
ontime2	1134.3639969826
ontime3	1137.605036974
ontime6	1199.1847968102
ontime7	2803.4995925426
l1events	595491

3.1.4 Events

	ccd 0	ccd 1	ccd 2	ccd 3	ccd 6	ccd 7
level 1 events	83838	82996	77651	77829	84476	188701
rejected events	8695	8648	8751	8564	8610	19025
rejected %	10%	10%	11%	11%	10%	10%

	ccd 0	ccd 1	ccd 2	ccd 3	ccd 6	ccd 7
grade 0 events	41525	41336	38390	38839	41530	32795
	49%	49%	49%	49%	49%	17%
grade 1 events	191	201	173	187	196	78
	0%	0%	0%	0%	0%	0%
grade 2 events	13359	13044	12320	12174	13203	49831
	15%	15%	15%	15%	15%	26%
grade 3 events	4829	4726	4358	4399	4704	13379
	5%	5%	5%	5%	5%	7%
grade 4 events	4706	4624	4370	4424	4680	13142
	5%	5%	5%	5%	5%	6%
grade 5 events	578	599	572	615	644	2776
	0%	0%	0%	0%	0%	1%
grade 6 events	10922	10838	9642	9621	11969	60715
	13%	13%	12%	12%	14%	32%
grade 7 events	7728	7628	7826	7570	7550	15985
	9%	9%	10%	9%	8%	8%

A Summary

A.1 Status

V&V Scientist	Jen Lauer
V&V Date (YYYY-MM-DD)	2006.12.22
V&V Edition	1
V&V Disposition and Status	OK
V&V Charge Time	6.78695663

A.2 Comments