

V&V Reference Report

L2 ASCDS Version : 7.6.9

Observation 61482 - L2 Version 001
Chandra X-Ray Center

L2 Processing Date : Dec 31 2006

Contents

1	Front	2
2	OBI	3
2.1	OBI	3
2.1.1	Images	3
2.1.2	Bias	3
2.1.3	Parameters	4
2.1.4	Events	4
2.2	Compared Parameters	5
2.3	Aspect	6
2.4	Star Slots	8
2.5	FID Slots	8
A	Summary	9
A.1	Status	9
A.2	Comments	9

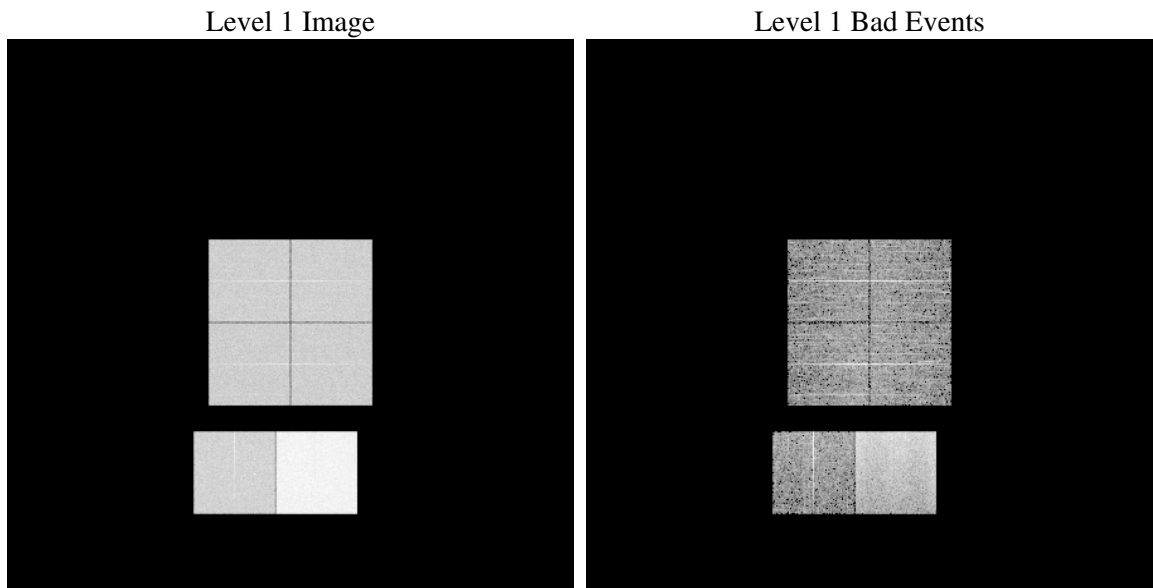
1 Front

seq_num	
obs_id	61482
title	ACIS-012367 diagnostics
observer	CHANDRA engineering request/realtime commanding
object	
dtcycle	0
cycle	P
ra_targ	0.0
dec_targ	0.0
ra_nom	305.03073040322
dec_nom	-35.013654595196
roll_nom	298.81989620762
revision	2
ontime	7745.6098237634
livetime	7647.5302483286
ontime0	3033.2634037286
ontime1	3065.7147739828
ontime2	2897.2224418968
ontime3	2900.2993616611
ontime6	3227.8481160402
ontime7	7745.6098237634
l2events	1309791

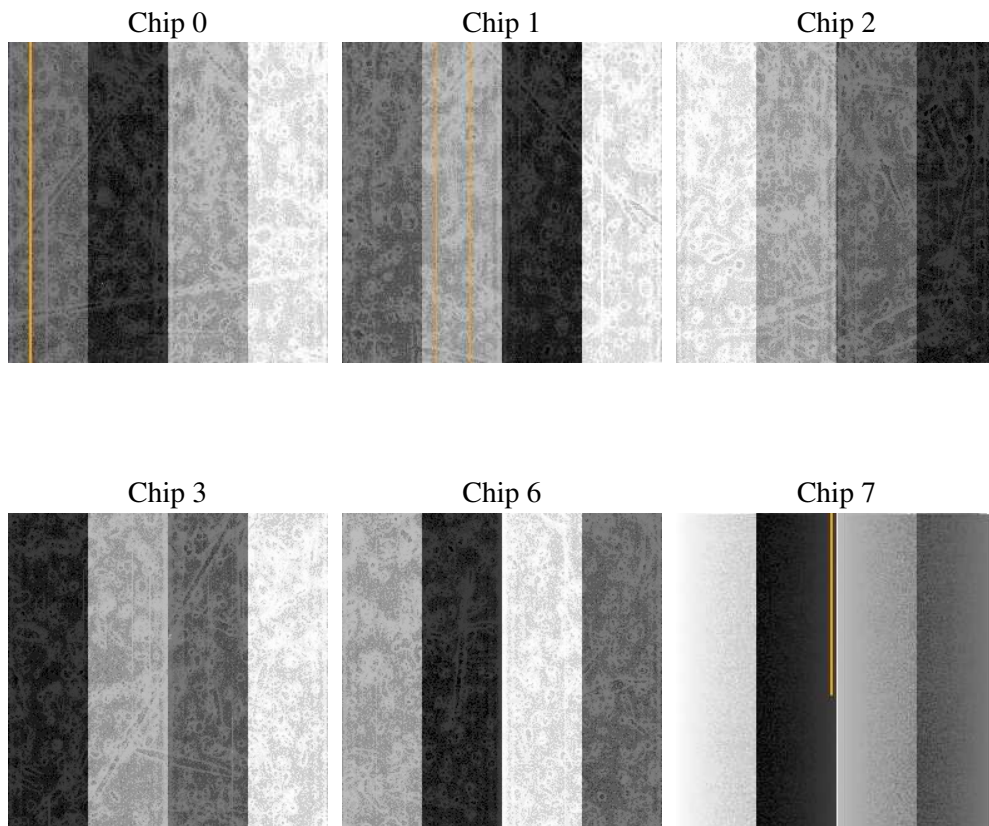
2 OBI

2.1 OBI

2.1.1 Images



2.1.2 Bias



2.1.3 Parameters

obi_num	0
ascdsver	7.6.9
caldbver	3.2.4
date	2006-12-31T05:26:23
revision	2

sched_exp_time	0.0
ontime	7745.9975534827
ontime0	3033.6100934446
ontime1	3066.0204237103
ontime2	2897.4870516211
ontime3	2900.7281313837
ontime6	3228.0716857612
ontime7	7745.9975534827
l1events	1544203

2.1.4 Events

	ccd 0	ccd 1	ccd 2	ccd 3	ccd 6	ccd 7
level 1 events	201941	204488	196848	198595	223805	518526
rejected events	22538	22885	24157	24438	24053	60950
rejected %	11%	11%	12%	12%	10%	11%

	ccd 0	ccd 1	ccd 2	ccd 3	ccd 6	ccd 7
grade 0 events	98158	99681	94882	97032	107672	78911
	48%	48%	48%	48%	48%	15%
grade 1 events	458	444	435	482	513	196
	0%	0%	0%	0%	0%	0%
grade 2 events	32563	32852	31551	31335	36045	142090
	16%	16%	16%	15%	16%	27%
grade 3 events	11150	11255	10526	10807	11893	33009
	5%	5%	5%	5%	5%	6%
grade 4 events	11126	11170	10604	10717	11842	32376
	5%	5%	5%	5%	5%	6%
grade 5 events	1653	1643	1549	1584	1935	8022
	0%	0%	0%	0%	0%	1%
grade 6 events	26406	26645	25128	24266	32300	171190
	13%	13%	12%	12%	14%	33%
grade 7 events	20427	20798	22173	22372	21605	52732
	10%	10%	11%	11%	9%	10%

2.2 Compared Parameters

Parameter	Planned	Actual	Parameter	Planned	Actual
Instrument	ACIS	ACIS	Obspar format version number	6	6
Detector	ACIS-012367	ACIS-012367	Obspar file type	PREDICTED	ACTUAL
Grating	NONE	NONE	Obspar update status	NONE	UPDATED
Data mode	FAINT	FAINT	On-chip summing requested	N	N
Observation mode	SECONDARY	SECONDARY	Subarray requested	NONE	NONE
Pointing RA	0	305.0307304032166	Alternating exposures requested	N	N
Pointing Dec	0	-35.01365459519641	Primary exposure time	0.000000	3.2
Pointing Roll	0.0	298.8198962076157			
SIM focus pos (mm)	-0.782348	-0.6828225247311905			
SIM defocus (mm)	0	0.8505141146731063			
SIM translation stage pos (mm)	-233.592463	250.466033080201			
SIM translation stage offset (mm)	0	-0.01005468664627074			
Observation start time	116081739.189	116081738.42014			
Observation start date	2001-09-05T12:55:39	2001-09-05T12:55:38			
Observation end time	116103048.939	116103048.17099			
Observation end date	2001-09-05T18:50:49	2001-09-05T18:50:48			
Read mode	TIMED	TIMED			

2.3 Aspect

2.4 Star Slots

2.5 FID Slots

A Summary

A.1 Status

V&V Scientist	Doug Morgan
V&V Date (YYYY-MM-DD)	2007.01.03
V&V Edition	1
V&V Disposition and Status	OK
V&V Charge Time	7.74560982

A.2 Comments