

V&V Reference Report

L2 ASCDS Version : 7.6.10

Observation 61412 - L2 Version 001
Chandra X-Ray Center

L2 Processing Date : Jan 13 2007

Contents

1	Front	2
2	OBI	3
2.1	OBI	3
2.1.1	Images	3
2.1.2	Bias	3
2.1.3	Parameters	4
2.1.4	Events	4
2.2	Compared Parameters	5
2.3	Star Slots	6
2.4	FID Slots	6
A	Summary	7
A.1	Status	7
A.2	Comments	7

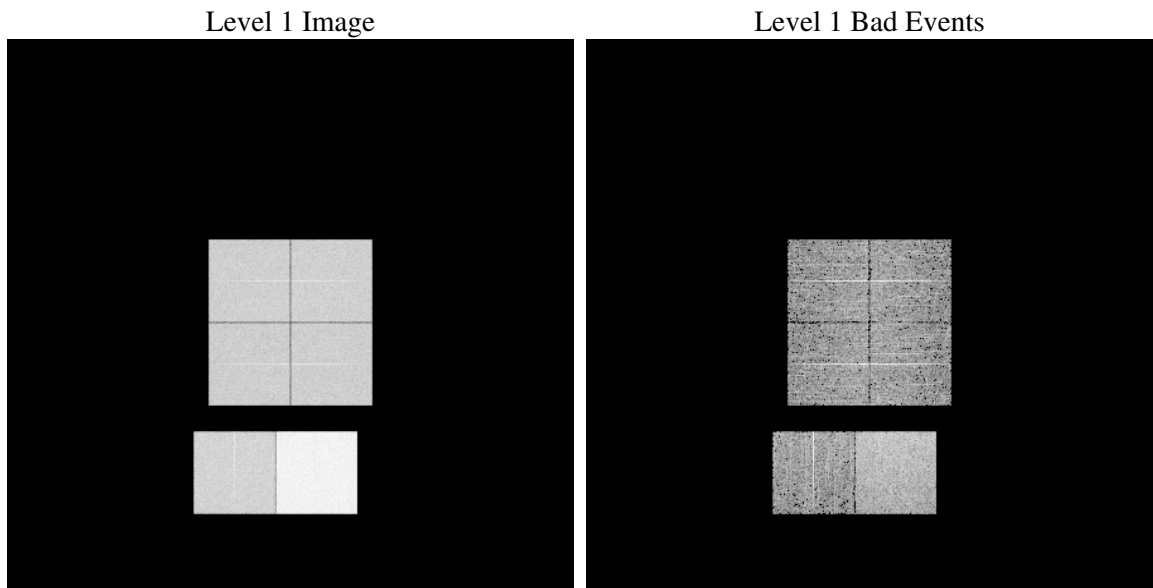
1 Front

seq_num	
obs_id	61412
title	ACIS-012367 diagnostics
observer	CHANDRA engineering request/realtime commanding
object	
dtcycle	0
cycle	P
ra_targ	0.0
dec_targ	0.0
ra_nom	130.98047886334
dec_nom	51.025865898643
roll_nom	82.652505875726
revision	2
ontime	7903.1450214088
livetime	7803.0706404451
ontime0	3148.3269949704
ontime1	3206.7058178037
ontime2	2973.3935631067
ontime3	3002.3985835761
ontime6	3342.9112088531
ontime7	7903.1450214088
l2events	1320057

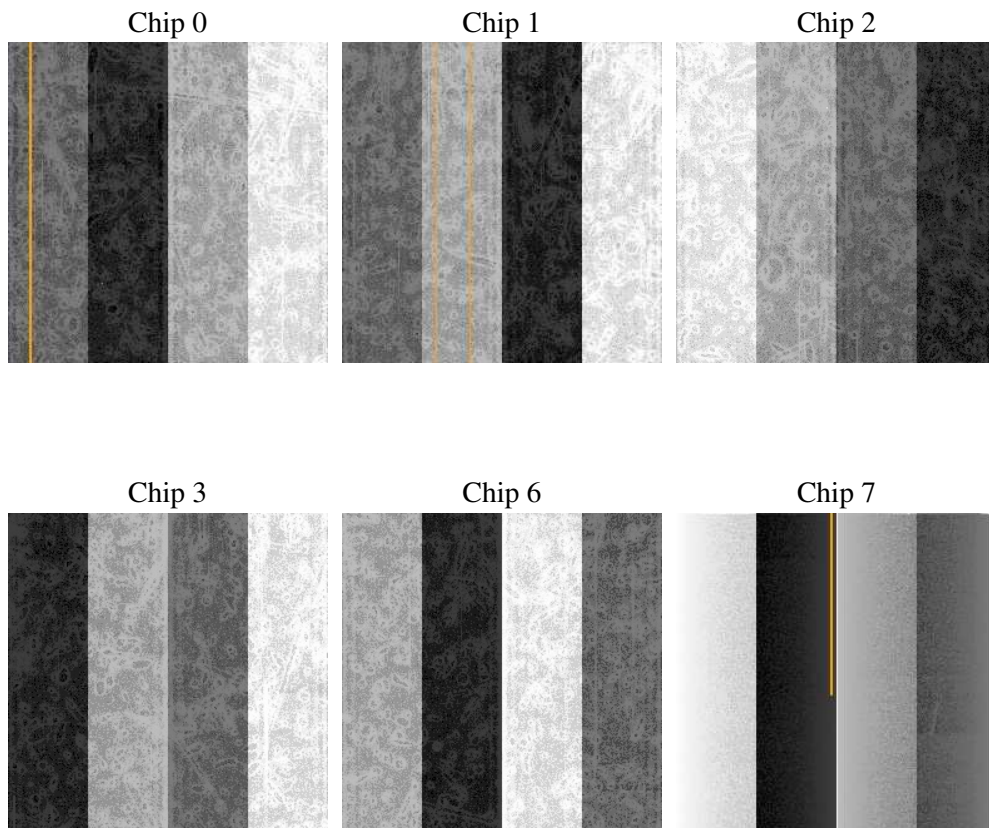
2 OBI

2.1 OBI

2.1.1 Images



2.1.2 Bias



2.1.3 Parameters

obi_num	1
ascdsver	7.6.10
caldbver	3.3.0
date	2007-01-13T18:33:01
revision	2

sched_exp_time	0.0
ontime	7903.1450214088
ontime0	3148.3269949704
ontime1	3206.7058178037
ontime2	2973.3935631067
ontime3	3002.3985835761
ontime6	3342.9112088531
ontime7	7903.1450214088
l1events	1540396

2.1.4 Events

	ccd 0	ccd 1	ccd 2	ccd 3	ccd 6	ccd 7
level 1 events	203075	205851	196004	197882	225453	512131
rejected events	23203	23429	24071	24467	25458	44406
rejected %	11%	11%	12%	12%	11%	8%

	ccd 0	ccd 1	ccd 2	ccd 3	ccd 6	ccd 7
grade 0 events	99953	101087	96327	97325	109277	119248
	49%	49%	49%	49%	48%	23%
grade 1 events	479	488	479	472	519	294
	0%	0%	0%	0%	0%	0%
grade 2 events	31756	32868	30653	30849	34930	103428
	15%	15%	15%	15%	15%	20%
grade 3 events	11445	11511	10680	10946	12314	47922
	5%	5%	5%	5%	5%	9%
grade 4 events	11314	11515	10801	11134	12338	47322
	5%	5%	5%	5%	5%	9%
grade 5 events	1588	1709	1512	1593	1821	8516
	0%	0%	0%	0%	0%	1%
grade 6 events	26310	26696	24979	24299	32486	153033
	12%	12%	12%	12%	14%	29%
grade 7 events	20230	19977	20573	21264	21768	32368
	9%	9%	10%	10%	9%	6%

2.2 Compared Parameters

Parameter	Planned	Actual	Parameter	Planned	Actual
Instrument	ACIS	ACIS	Obspar format version number	6	6
Detector	ACIS-012367	ACIS-012367	Obspar file type	PREDICTED	ACTUAL
Grating	NONE	NONE	Obspar update status	NONE	UPDATED
Data mode	FAINT	FAINT	On-chip summing requested	N	N
Observation mode	SECONDARY	SECONDARY	Subarray requested	NONE	NONE
Pointing RA	0	130.9804788633361	Alternating exposures requested	N	N
Pointing Dec	0	51.02586589864261	Primary exposure time	0.000000	3.2
Pointing Roll	0.0	82.65250587572555			
SIM focus pos (mm)	-0.782348	-0.6828225247311905			
SIM defocus (mm)	0	0.8505141146731063			
SIM translation stage pos (mm)	-233.592463	250.4635187648994			
SIM translation stage offset (mm)	0	-0.007540371344731511			
Observation start time	121791905.765	121791904.99665			
Observation start date	2001-11-10T15:05:06	2001-11-10T15:05:04			
Observation end time	121816138.816	121816138.04762			
Observation end date	2001-11-10T21:48:59	2001-11-10T21:48:58			
Read mode	TIMED	TIMED			

2.3 Star Slots

2.4 FID Slots

A Summary

A.1 Status

V&V Scientist	Doug Morgan
V&V Date (YYYY-MM-DD)	2007.01.14
V&V Edition	1
V&V Disposition and Status	OK
V&V Charge Time	7.90314502

A.2 Comments