

# V&V Reference Report

## L2 ASCDS Version : 8.4.5

Observation 61372 - L2 Version 3  
Chandra X-Ray Center

L2 Processing Date : Sep 29 2012

## Contents

<b>1</b>	<b>Front</b>	<b>2</b>
<b>2</b>	<b>OBI</b>	<b>3</b>
2.1	OBI . . . . .	3
2.1.1	Images . . . . .	3
2.1.2	Bias . . . . .	3
2.1.3	Parameters . . . . .	4
2.1.4	Events . . . . .	4
2.2	Compared Parameters . . . . .	5
2.3	Star Slots . . . . .	6
2.4	FID Slots . . . . .	6
<b>A</b>	<b>Summary</b>	<b>7</b>
A.1	Status . . . . .	7
A.2	Comments . . . . .	7

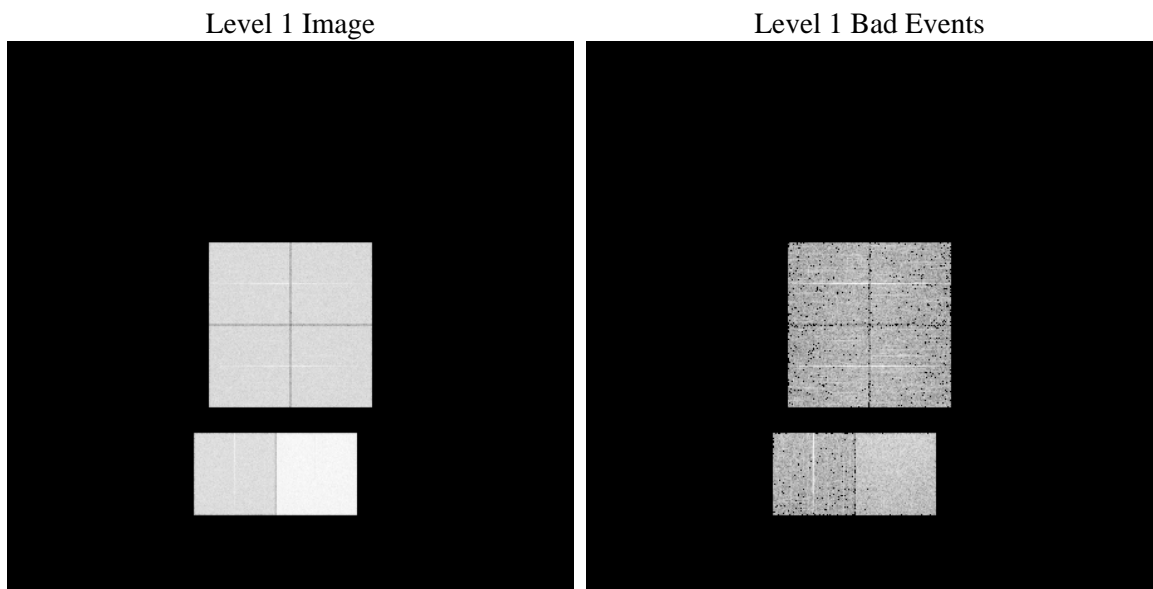
# 1 Front

seq_num	&#160	Sequence number
obs_id	61372	Observation id
title	ACIS-012367 diagnostics	Proposal title
observer	CHANDRA engineering request/realtime commanding	Principal investig
object	&#160	Source name
dtcycle	0	&#160
cycle	P	events from which exps? Prim/Second/Both
ra_targ	0.0	Observer's specified target RA [deg]
dec_targ	0.0	Observer's specified target Dec [deg]
ra_nom	340.03691180842	Nominal RA [deg]
dec_nom	44.988216958836	Nominal Dec [deg]
roll_nom	302.9122985403	Nominal Roll [deg]
revision	3	Processing version of data
ontime	7619.200007081	Sum of GTIs [s]
livetime	7522.7211088599	Livetime [s]
ontime0	2939.231826216	Sum of GTIs [s]
ontime1	2905.7951649278	Sum of GTIs [s]
ontime2	2825.7957856059	Sum of GTIs [s]
ontime3	2835.5191446692	Sum of GTIs [s]
ontime6	3113.3026281148	Sum of GTIs [s]
ontime7	7619.200007081	Sum of GTIs [s]
l2events	1216638	Number of level 2 events

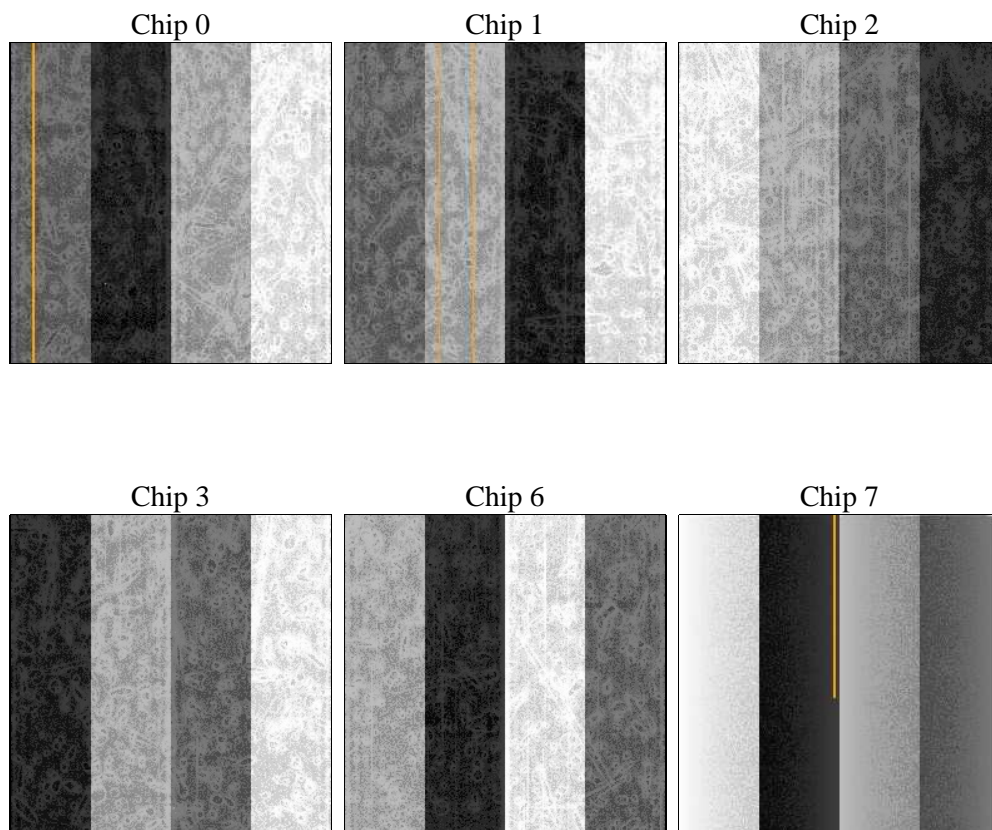
## 2 OBI

### 2.1 OBI

#### 2.1.1 Images



#### 2.1.2 Bias



### 2.1.3 Parameters

obi_num	0	Obi number	sched_exp_time	0.0	[s] Scheduled observation exposure time
ascdsver	8.4.5	Processing system revision	ontime	7619.200007081	Sum of GTIs [s]
caldsver	4.5.2	&#160	ontime0	2939.231826216	Sum of GTIs [s]
date	2012-09-29T15:32:07	Date and time of file creation	ontime1	2905.7951649278	Sum of GTIs [s]
revision	3	Processing version of data	ontime2	2825.7957856059	Sum of GTIs [s]
			ontime3	2835.5191446692	Sum of GTIs [s]
			ontime6	3113.3026281148	Sum of GTIs [s]
			ontime7	7619.200007081	Sum of GTIs [s]
			l1events	1421132	Number of level 1 events

### 2.1.4 Events

	ccd 0	ccd 1	ccd 2	ccd 3	ccd 6	ccd 7		ccd 0	ccd 1	ccd 2	ccd 3	ccd 6	ccd 7
level 1 events	185157	183131	181208	182153	205837	483646	grade 0 events	90221	88892	88520	89010	99533	113362
rejected events	22097	21760	22414	22989	23623	41318		48%	48%	48%	48%	48%	23%
rejected %	11%	11%	12%	12%	11%	8%	grade 1 events	471	462	445	448	502	296
								0%	0%	0%	0%	0%	0%
							grade 2 events	28535	28383	27763	28170	31701	99008
								15%	15%	15%	15%	15%	20%
							grade 3 events	10269	10166	9915	10017	11450	45167
								5%	5%	5%	5%	5%	9%
							grade 4 events	10164	10270	10091	10049	11063	44635
								5%	5%	5%	5%	5%	9%
							grade 5 events	1580	1568	1451	1595	1834	8270
								0%	0%	0%	0%	0%	1%
							grade 6 events	24046	23660	22671	22111	28467	140346
								12%	12%	12%	12%	13%	29%
							grade 7 events	19871	19730	20352	20753	21287	32562
								10%	10%	11%	11%	10%	6%

## 2.2 Compared Parameters

Parameter	Planned	Actual	Parameter	Planned	Actual
Instrument	ACIS	ACIS	Obspar format version number	7	7
Detector	ACIS-012367	ACIS-012367	Obspar file type	PREDICTED	ACTUAL
Grating	NONE	NONE	Obspar update status	NONE	UPDATED
Data mode	FAINT	FAINT	On-chip summing requested	N	N
Observation mode	SECONDARY	SECONDARY	Subarray requested	NONE	NONE
[deg] Pointing RA	0	340.036911808417	Alternating exposures requested	N	N
[deg] Pointing Dec	0	44.98821695883588	[s] Primary exposure time	0.000000	3.2
[deg] Pointing Roll	0.0	302.9122985403043			
[mm] SIM focus pos	-0.782348	-0.6828225247311905			
[mm] SIM defocus	0	0.8505141146731063			
[mm] SIM translation stage pos	-233.592463	250.466033080201			
[mm] SIM translation stage offset	0	-0.01005468664627074			
[s] Observation start time (MET)	125648333.119	125648332.35097			
Observation start date	2001-12-25T06:18:53	2001-12-25T06:18:52			
[s] Observation end time (MET)	125680323.371	125680322.60226			
Observation end date	2001-12-25T15:12:03	2001-12-25T15:12:02			
Read mode	TIMED	TIMED			

## **2.3 Star Slots**

## **2.4 FID Slots**

## **A Summary**

### **A.1 Status**

V&V Scientist	Jen Lauer
V&V Date (YYYY-MM-DD)	2012.10.01
V&V Edition	1
V&V Disposition and Status	OK
V&V Charge Time	7.619200007081

### **A.2 Comments**