

V&V Reference Report

L2 ASCDS Version : 7.6.8.1

Observation 61352 - L2 Version 001
Chandra X-Ray Center

L2 Processing Date : Aug 26 2006

Contents

1	Front	2
2	OBI	3
2.1	OBI	3
2.1.1	Images	3
2.1.2	Bias	3
2.1.3	Parameters	4
2.1.4	Events	4
2.2	Compared Parameters	5
2.3	Aspect	6
2.4	Star Slots	8
2.5	FID Slots	8
A	Summary	9
A.1	Status	9
A.2	Comments	9

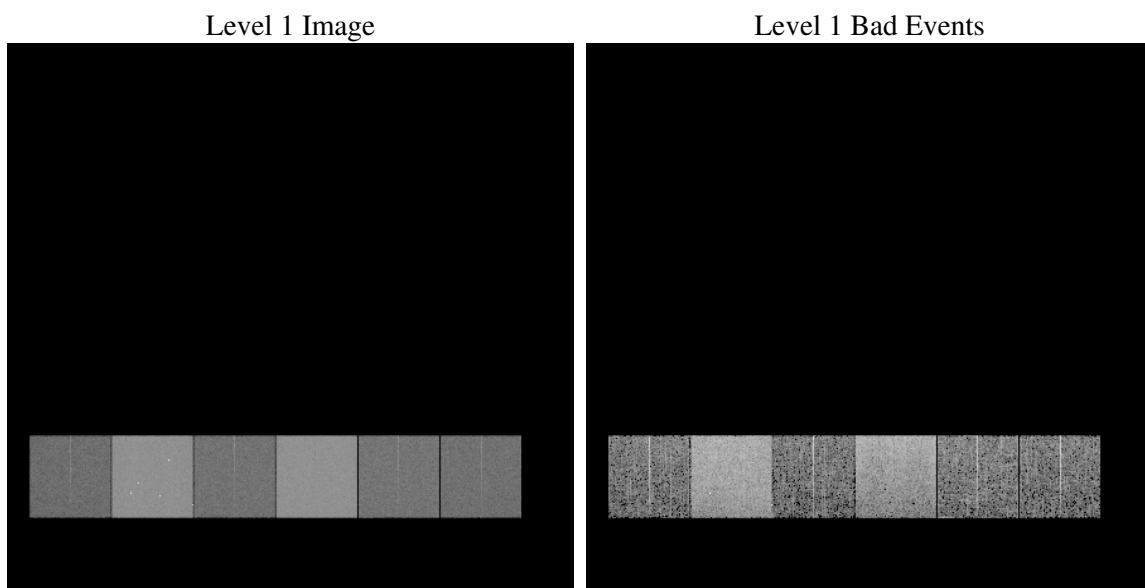
1 Front

seq_num	
obs_id	61352
title	ACIS-456789 diagnostics
observer	CHANDRA engineering request/realtime commanding
object	
dtcycle	0
cycle	P
ra_targ	0.0
dec_targ	0.0
ra_nom	144.95298112529
dec_nom	54.007431487118
roll_nom	132.02122583945
revision	2
ontime	6332.5363005251
livetime	6252.3499128922
ontime4	2376.6917003989
ontime5	6714.9703121185
ontime6	2574.3540300876
ontime7	6332.5363005251
ontime8	2702.6261636764
ontime9	2535.3382310122
l2events	1189711

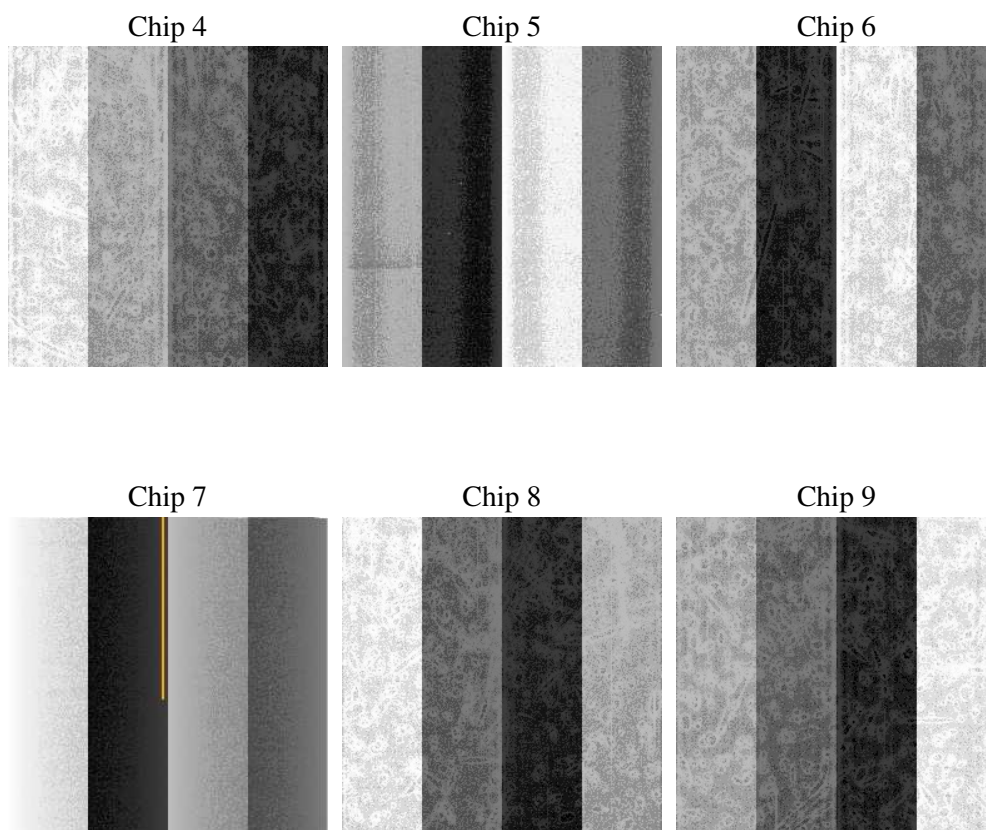
2 OBI

2.1 OBI

2.1.1 Images



2.1.2 Bias



2.1.3 Parameters

obi_num	1
ascdsver	7.6.8.1
caldsver	3.2.3
date	2006-08-26T17:16:19
revision	2

sched_exp_time	0.0
ontime	6336.1758697629
ontime4	2378.9211619943
ontime5	6718.6098813564
ontime6	2576.6245316863
ontime7	6336.1758697629
ontime8	2706.2657329142
ontime9	2537.7318526059
l1events	1422457

2.1.4 Events

	ccd 4	ccd 5	ccd 6	ccd 7	ccd 8	ccd 9
level 1 events	144926	383898	166350	390861	177864	158558
rejected events	19287	54059	18428	43882	21771	19118
rejected %	13%	14%	11%	11%	12%	12%

	ccd 4	ccd 5	ccd 6	ccd 7	ccd 8	ccd 9
grade 0 events	71176	45833	80787	64322	86378	76427
	49%	11%	48%	16%	48%	48%
grade 1 events	332	320	359	131	367	370
	0%	0%	0%	0%	0%	0%
grade 2 events	22480	154736	25868	105023	27882	24746
	15%	40%	15%	26%	15%	15%
grade 3 events	7692	11791	9045	26357	9693	8538
	5%	3%	5%	6%	5%	5%
grade 4 events	7430	11296	9055	25332	9794	8747
	5%	2%	5%	6%	5%	5%
grade 5 events	1232	6229	1380	5917	1630	1398
	0%	1%	0%	1%	0%	0%
grade 6 events	17025	106349	23344	126110	22534	21193
	11%	27%	14%	32%	12%	13%
grade 7 events	17559	47344	16512	37669	19586	17139
	12%	12%	9%	9%	11%	10%

2.2 Compared Parameters

Parameter	Planned	Actual	Parameter	Planned	Actual
Instrument	ACIS	ACIS	Obspar format version number	6	6
Detector	ACIS-456789	ACIS-456789	Obspar file type	PREDICTED	ACTUAL
Grating	NONE	NONE	Obspar update status	NONE	UPDATED
Data mode	FAINT	FAINT	On-chip summing requested	N	N
Observation mode	SECONDARY	SECONDARY	Subarray requested	NONE	NONE
Pointing RA	0	144.9529811252906	Alternating exposures requested	N	N
Pointing Dec	0	54.00743148711818	Primary exposure time	3.2	3.2
Pointing Roll	0.0	132.0212258394461			
SIM focus pos (mm)	-0.684267	-0.6828225247311905			
SIM defocus (mm)	0	0.8505141146731063			
SIM translation stage pos (mm)	-190.132523	250.466033080201			
SIM translation stage offset (mm)	0	-0.01005468664627074			
Observation start time	127242892.883519	127242892.11504			
Observation start date	2002-01-12T17:14:53	2002-01-12T17:14:52			
Observation end time	127254161.733973	127254160.96549			
Observation end date	2002-01-12T20:22:42	2002-01-12T20:22:40			
Read mode	TIMED	TIMED			

2.3 Aspect

2.4 Star Slots

2.5 FID Slots

A Summary

A.1 Status

V&V Scientist	Jen Lauer
V&V Date (YYYY-MM-DD)	2006.08.28
V&V Edition	1
V&V Disposition and Status	OK
V&V Charge Time	6.3325363

A.2 Comments

The ACIS focal plane temperature was above calibration limits for the entire observation.