

# V&V Reference Report

## L2 ASCDS Version : 8.4.5

Observation 61162 - L2 Version 3  
Chandra X-Ray Center

L2 Processing Date : Oct 9 2012

## Contents

<b>1</b>	<b>Front</b>	<b>2</b>
<b>2</b>	<b>OBI</b>	<b>3</b>
2.1	OBI . . . . .	3
2.1.1	Images . . . . .	3
2.1.2	Bias . . . . .	3
2.1.3	Parameters . . . . .	4
2.1.4	Events . . . . .	4
2.2	Compared Parameters . . . . .	5
2.3	Star Slots . . . . .	6
2.4	FID Slots . . . . .	6
<b>A</b>	<b>Summary</b>	<b>7</b>
A.1	Status . . . . .	7
A.2	Comments . . . . .	7

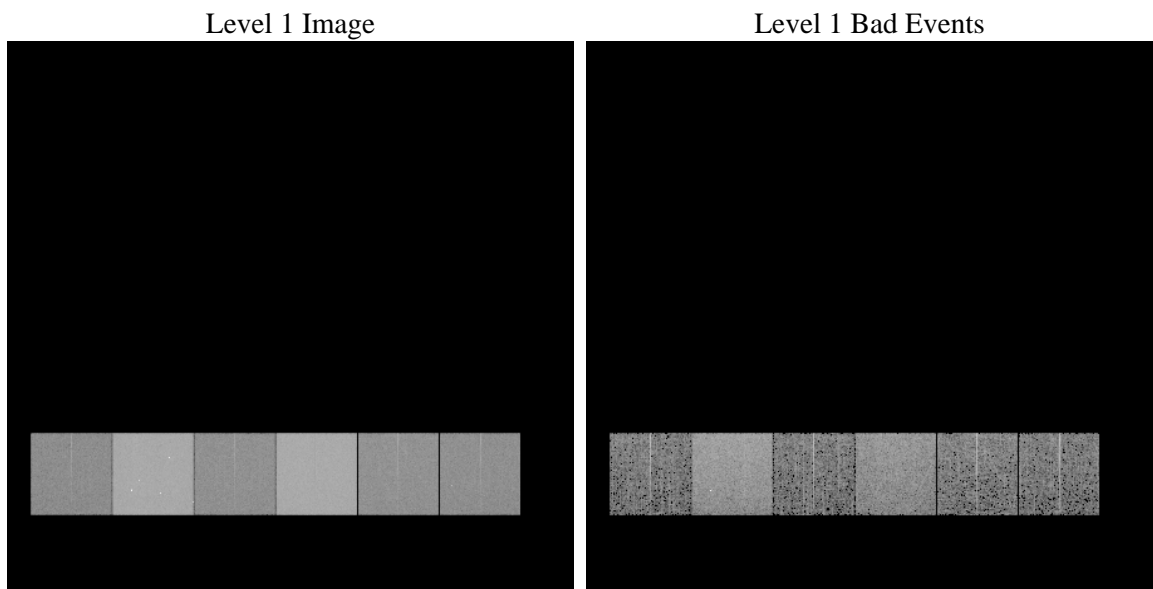
# 1 Front

seq_num	&#160	Sequence number
obs_id	61162	Observation id
title	ACIS-456789 diagnostics	Proposal title
observer	CHANDRA engineering request/realtime commanding	Principal investig
object	&#160	Source name
dtcycle	0	&#160
cycle	P	events from which exps? Prim/Second/Both
ra_targ	0.0	Observer's specified target RA [deg]
dec_targ	0.0	Observer's specified target Dec [deg]
ra_nom	291.47032182155	Nominal RA [deg]
dec_nom	15.250185761824	Nominal Dec [deg]
roll_nom	146.8370277207	Nominal Roll [deg]
revision	3	Processing version of data
ontime	7127.64177531	Sum of GTIs [s]
livetime	7037.3872834004	Livetime [s]
ontime4	2581.8520131111	Sum of GTIs [s]
ontime5	7623.5104268789	Sum of GTIs [s]
ontime6	2781.4728173614	Sum of GTIs [s]
ontime7	7127.64177531	Sum of GTIs [s]
ontime8	2891.6679280698	Sum of GTIs [s]
ontime9	2755.545114696	Sum of GTIs [s]
l2events	1215839	Number of level 2 events

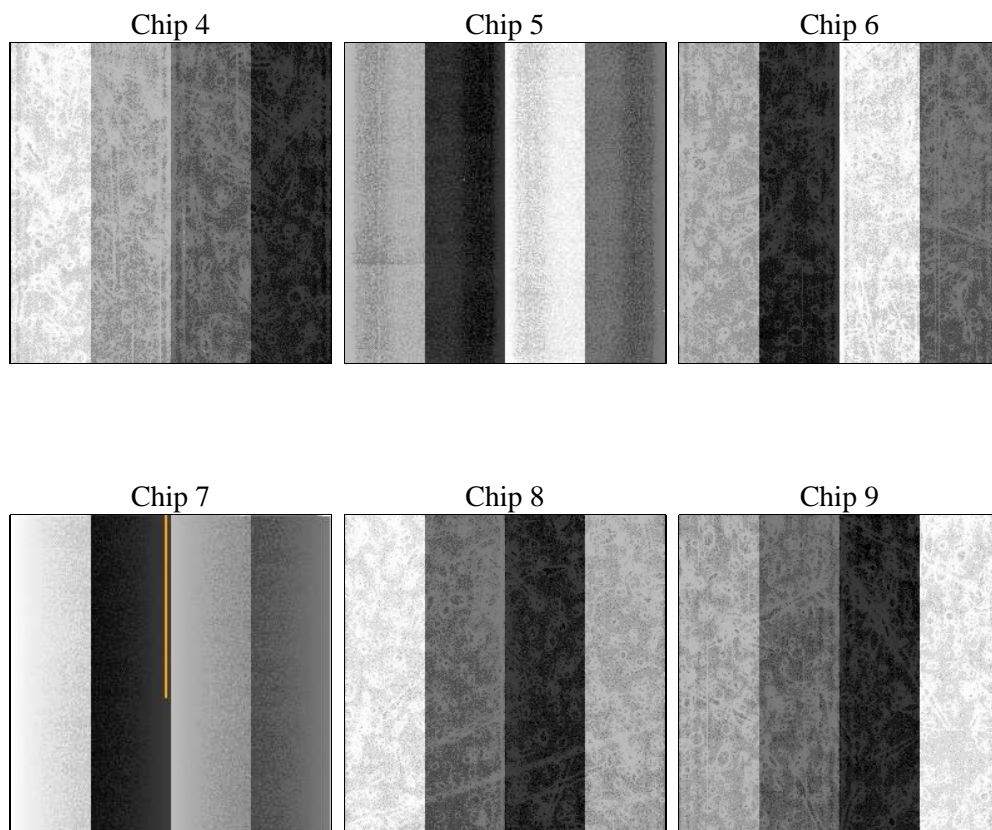
## 2 OBI

### 2.1 OBI

#### 2.1.1 Images



#### 2.1.2 Bias



### 2.1.3 Parameters

obi_num	0	Obi number	sched_exp_time	0.0	[s] Scheduled observation exposure time
ascdsver	8.4.5	Processing system revision	ontime	7127.64177531	Sum of GTIs [s]
caldsver	4.5.2	&#160	ontime4	2581.8520131111	Sum of GTIs [s]
date	2012-10-09T09:54:57	Date and time of file creation	ontime5	7623.5104268789	Sum of GTIs [s]
revision	3	Processing version of data	ontime6	2781.4728173614	Sum of GTIs [s]
			ontime7	7127.64177531	Sum of GTIs [s]
			ontime8	2891.6679280698	Sum of GTIs [s]
			ontime9	2755.545114696	Sum of GTIs [s]
			l1events	1446159	Number of level 1 events

### 2.1.4 Events

	ccd 4	ccd 5	ccd 6	ccd 7	ccd 8	ccd 9		ccd 4	ccd 5	ccd 6	ccd 7	ccd 8	ccd 9
level 1 events	143331	400583	164989	405837	174150	157269	grade 0 events	69327	86043	78709	93472	82810	75456
rejected events	20349	52223	20464	38309	23304	20124		48%	21%	47%	23%	47%	47%
rejected %	14%	13%	12%	9%	13%	12%	grade 1 events	375	748	397	242	385	343
								0%	0%	0%	0%	0%	0%
							grade 2 events	21841	122686	25045	81390	26690	24303
								15%	30%	15%	20%	15%	15%
							grade 3 events	7527	22459	9072	37453	9604	8306
								5%	5%	5%	9%	5%	5%
							grade 4 events	7720	22157	8960	37171	9547	8329
								5%	5%	5%	9%	5%	5%
							grade 5 events	1326	9397	1519	7572	1718	1507
								0%	2%	0%	1%	0%	0%
							grade 6 events	16567	95015	22739	118042	22195	20751
								11%	23%	13%	29%	12%	13%
							grade 7 events	18648	42078	18548	30495	21201	18274
								13%	10%	11%	7%	12%	11%

## 2.2 Compared Parameters

Parameter	Planned	Actual	Parameter	Planned	Actual
Instrument	ACIS	ACIS	Obspar format version number	7	7
Detector	ACIS-456789	ACIS-456789	Obspar file type	PREDICTED	ACTUAL
Grating	NONE	NONE	Obspar update status	NONE	UPDATED
Data mode	FAINT	FAINT	On-chip summing requested	N	N
Observation mode	SECONDARY	SECONDARY	Subarray requested	NONE	NONE
[deg] Pointing RA	0	291.4703218215531	Alternating exposures requested	N	N
[deg] Pointing Dec	0	15.25018576182361	[s] Primary exposure time	0.000000	3.2
[deg] Pointing Roll	0.0	146.8370277206978			
[mm] SIM focus pos	-0.684267	-0.7809083437167272			
[mm] SIM defocus	0	0.7524282956875696			
[mm] SIM translation stage pos	-190.132523	250.466033080201			
[mm] SIM translation stage offset	0	-0.01005468664627074			
[s] Observation start time (MET)	140728824.837	140728823.81226			
Observation start date	2002-06-17T19:20:25	2002-06-17T19:20:23			
[s] Observation end time (MET)	140755505.588	140755504.56335			
Observation end date	2002-06-18T02:45:06	2002-06-18T02:45:04			
Read mode	TIMED	TIMED			

## **2.3 Star Slots**

## **2.4 FID Slots**

## A Summary

### A.1 Status

V&V Scientist	Jen Lauer
V&V Date (YYYY-MM-DD)	2012.10.18
V&V Edition	1
V&V Disposition and Status	OK
V&V Charge Time	7.12764177531

### A.2 Comments