

V&V Reference Report

L2 ASCDS Version : 7.6.9

Observation 61162 - L2 Version 001
Chandra X-Ray Center

L2 Processing Date : Sep 19 2006

Contents

1	Front	2
2	OBI	3
2.1	OBI	3
2.1.1	Images	3
2.1.2	Bias	3
2.1.3	Parameters	4
2.1.4	Events	4
2.2	Compared Parameters	5
2.3	Aspect	6
2.4	Star Slots	8
2.5	FID Slots	8
A	Summary	9
A.1	Status	9
A.2	Comments	9

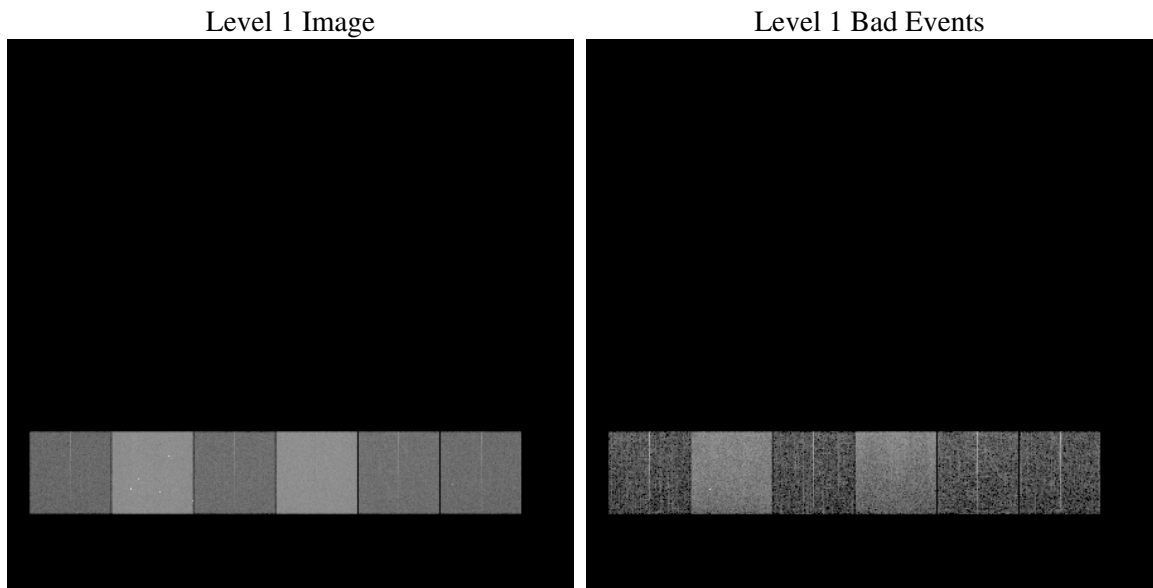
1 Front

seq_num	
obs_id	61162
title	ACIS-456789 diagnostics
observer	CHANDRA engineering request/realtime commanding
object	
dtcycle	0
cycle	P
ra_targ	0.0
dec_targ	0.0
ra_nom	291.47032181485
dec_nom	15.250185768523
roll_nom	146.83702772319
revision	2
ontime	7127.2416932285
livetime	7036.9922673991
ontime4	2580.2520131171
ontime5	7623.1513848007
ontime6	2781.1548152864
ontime7	7127.2416932285
ontime8	2891.4320059717
ontime9	2755.1039926112
l2events	1193737

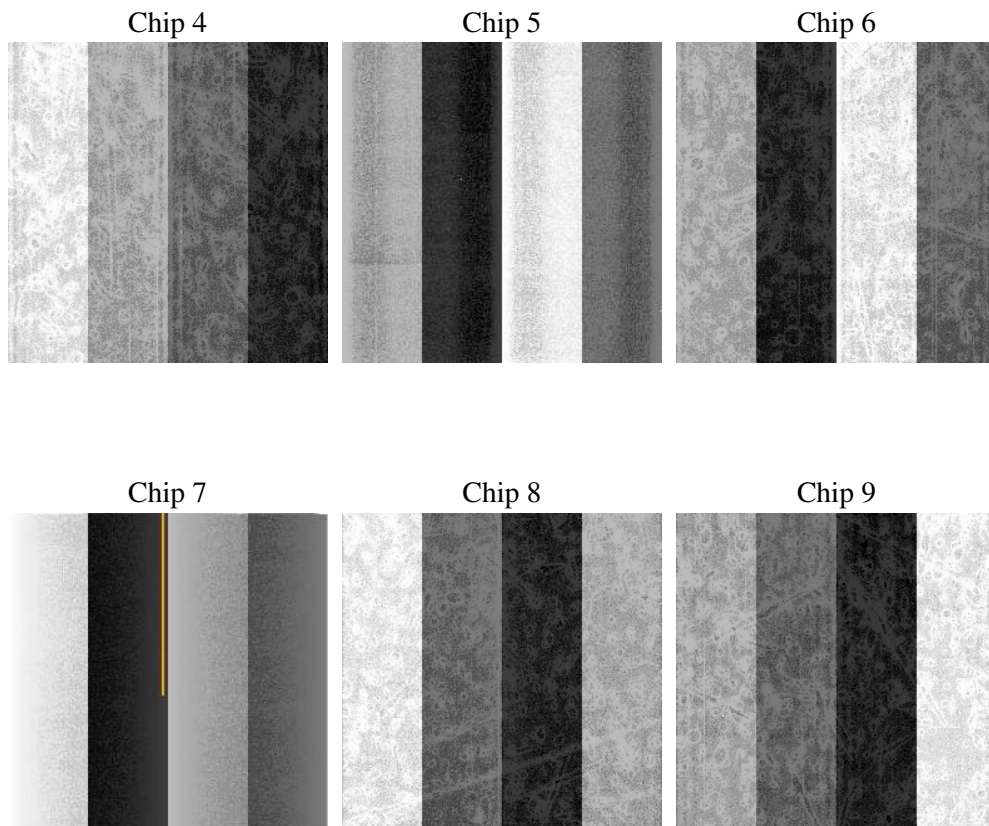
2 OBI

2.1 OBI

2.1.1 Images



2.1.2 Bias



2.1.3 Parameters

obi_num	0
ascdsver	7.6.9
caldsver	3.2.3
date	2006-09-19T21:46:20
revision	2

sched_exp_time	0.0
ontime	7130.2193730772
ontime4	2583.1065729558
ontime5	7626.088024646
ontime6	2784.0504151285
ontime7	7130.2193730772
ontime8	2894.2455258369
ontime9	2758.1227124631
l1events	1446159

2.1.4 Events

	ccd 4	ccd 5	ccd 6	ccd 7	ccd 8	ccd 9
level 1 events	143331	400583	164989	405837	174150	157269
rejected events	20508	62032	20627	50349	23481	20283
rejected %	14%	15%	12%	12%	13%	12%

	ccd 4	ccd 5	ccd 6	ccd 7	ccd 8	ccd 9
grade 0 events	69326	44624	78709	67285	82809	75455
	48%	11%	47%	16%	47%	47%
grade 1 events	375	600	396	166	385	343
	0%	0%	0%	0%	0%	0%
grade 2 events	21842	159904	25045	105576	26691	24304
	15%	39%	15%	26%	15%	15%
grade 3 events	7526	11776	9072	27300	9603	8306
	5%	2%	5%	6%	5%	5%
grade 4 events	7720	11512	8960	26781	9547	8329
	5%	2%	5%	6%	5%	5%
grade 5 events	1326	6879	1519	6860	1716	1507
	0%	1%	0%	1%	0%	0%
grade 6 events	16568	110863	22739	128707	22198	20750
	11%	27%	13%	31%	12%	13%
grade 7 events	18648	54425	18549	43162	21201	18275
	13%	13%	11%	10%	12%	11%

2.2 Compared Parameters

Parameter	Planned	Actual	Parameter	Planned	Actual
Instrument	ACIS	ACIS	Obspar format version number	6	6
Detector	ACIS-456789	ACIS-456789	Obspar file type	PREDICTED	ACTUAL
Grating	NONE	NONE	Obspar update status	NONE	UPDATED
Data mode	FAINT	FAINT	On-chip summing requested	N	N
Observation mode	SECONDARY	SECONDARY	Subarray requested	NONE	NONE
Pointing RA	0	291.4703218148495	Alternating exposures requested	N	N
Pointing Dec	0	15.25018576852335	Primary exposure time	0.000000	3.2
Pointing Roll	0.0	146.837027723188			
SIM focus pos (mm)	-0.684267	-0.7809083437167272			
SIM defocus (mm)	0	0.7524282956875696			
SIM translation stage pos (mm)	-190.132523	250.466033080201			
SIM translation stage offset (mm)	0	-0.01005468664627074			
Observation start time	140728824.837	140728823.81226			
Observation start date	2002-06-17T19:20:25	2002-06-17T19:20:23			
Observation end time	140755505.588	140755504.56335			
Observation end date	2002-06-18T02:45:06	2002-06-18T02:45:04			
Read mode	TIMED	TIMED			

2.3 Aspect

2.4 Star Slots

2.5 FID Slots

A Summary

A.1 Status

V&V Scientist	Jen Lauer
V&V Date (YYYY-MM-DD)	2006.09.20
V&V Edition	1
V&V Disposition and Status	OK
V&V Charge Time	7.12724169

A.2 Comments