

V&V Reference Report

L2 ASCDS Version : 7.6.9

Observation 61152 - L2 Version 001
Chandra X-Ray Center

L2 Processing Date : Sep 21 2006

Contents

1	Front	2
2	OBI	3
2.1	OBI	3
2.1.1	Images	3
2.1.2	Bias	3
2.1.3	Parameters	4
2.1.4	Events	4
2.2	Compared Parameters	5
2.3	Aspect	6
2.4	Star Slots	8
2.5	FID Slots	8
A	Summary	9
A.1	Status	9
A.2	Comments	9

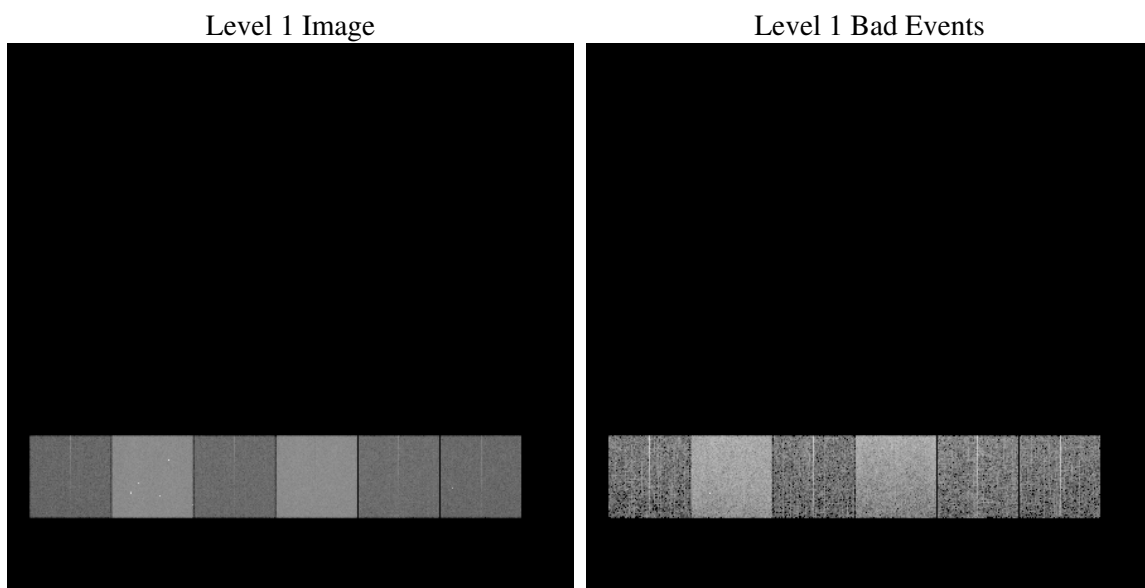
1 Front

seq_num	
obs_id	61152
title	ACIS-456789 diagnostics
observer	CHANDRA engineering request/realtime commanding
object	
dtcycle	0
cycle	P
ra_targ	0.0
dec_targ	0.0
ra_nom	288.99454207023
dec_nom	-29.971785511332
roll_nom	66.693186684165
revision	2
ontime	7127.6441048682
livetime	7037.3895834603
ontime4	2577.7558974326
ontime5	7617.0289465785
ontime6	2762.0395560563
ontime7	7127.6441048682
ontime8	2888.4393885136
ontime9	2694.2689677477
l2events	1190245

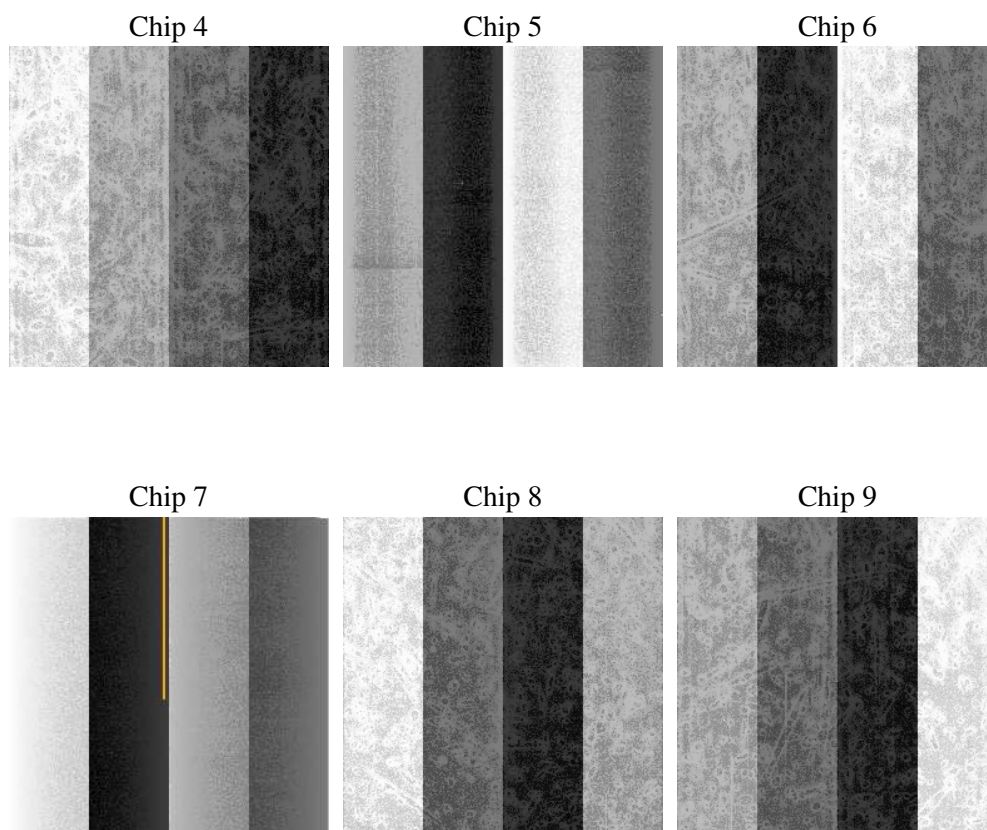
2 OBI

2.1 OBI

2.1.1 Images



2.1.2 Bias



2.1.3 Parameters

obi_num	0
ascdsver	7.6.9
caldsver	3.2.3
date	2006-09-21T11:52:08
revision	2

sched_exp_time	0.0
ontime	7130.2082830369
ontime4	2579.8648633659
ontime5	7619.5931247473
ontime6	2764.603734225
ontime7	7130.2082830369
ontime8	2891.0035666823
ontime9	2696.5420936942
l1events	1446296

2.1.4 Events

	ccd 4	ccd 5	ccd 6	ccd 7	ccd 8	ccd 9
level 1 events	145151	401843	163493	406855	174703	154251
rejected events	21229	61932	20591	50461	24643	21322
rejected %	14%	15%	12%	12%	14%	13%

	ccd 4	ccd 5	ccd 6	ccd 7	ccd 8	ccd 9
grade 0 events	70207	47073	78200	68145	82686	73098
	48%	11%	47%	16%	47%	47%
grade 1 events	362	129	400	158	383	375
	0%	0%	0%	0%	0%	0%
grade 2 events	22027	158819	24788	105615	26456	23531
	15%	39%	15%	25%	15%	15%
grade 3 events	7569	12273	9027	27274	9384	8302
	5%	3%	5%	6%	5%	5%
grade 4 events	7535	11943	8661	27444	9499	8300
	5%	2%	5%	6%	5%	5%
grade 5 events	1291	7129	1538	6762	1761	1506
	0%	1%	0%	1%	1%	0%
grade 6 events	16723	109960	22414	128059	22206	19880
	11%	27%	13%	31%	12%	12%
grade 7 events	19437	54517	18465	43398	22328	19259
	13%	13%	11%	10%	12%	12%

2.2 Compared Parameters

Parameter	Planned	Actual	Parameter	Planned	Actual
Instrument	ACIS	ACIS	Obspar format version number	6	6
Detector	ACIS-456789	ACIS-456789	Obspar file type	PREDICTED	ACTUAL
Grating	NONE	NONE	Obspar update status	NONE	UPDATED
Data mode	FAINT	FAINT	On-chip summing requested	N	N
Observation mode	SECONDARY	SECONDARY	Subarray requested	NONE	NONE
Pointing RA	0	288.9945420702302	Alternating exposures requested	N	N
Pointing Dec	0	-29.97178551133155	Primary exposure time	3.2	3.2
Pointing Roll	0.0	66.69318668416528			
SIM focus pos (mm)	-0.684267	-0.6828225247311905			
SIM defocus (mm)	0	0.8505141146731063			
SIM translation stage pos (mm)	-190.132523	250.466033080201			
SIM translation stage offset (mm)	0	-0.01005468664627074			
Observation start time	141414240.315051	141414239.29033			
Observation start date	2002-06-25T17:44:00	2002-06-25T17:43:59			
Observation end time	141445529.466334	141445528.44162			
Observation end date	2002-06-26T02:25:29	2002-06-26T02:25:28			
Read mode	TIMED	TIMED			

2.3 Aspect

2.4 Star Slots

2.5 FID Slots

A Summary

A.1 Status

V&V Scientist	Jen Lauer
V&V Date (YYYY-MM-DD)	2006.09.21
V&V Edition	1
V&V Disposition and Status	OK
V&V Charge Time	7.1276441

A.2 Comments