

V&V Reference Report

L2 ASCDS Version : 7.6.9

Observation 61112 - L2 Version 001
Chandra X-Ray Center

L2 Processing Date : Sep 26 2006

Contents

1	Front	2
2	OBI	3
2.1	OBI	3
2.1.1	Images	3
2.1.2	Bias	3
2.1.3	Parameters	4
2.1.4	Events	4
2.2	Compared Parameters	5
2.3	Aspect	6
2.4	Star Slots	8
2.5	FID Slots	8
A	Summary	9
A.1	Status	9
A.2	Comments	9

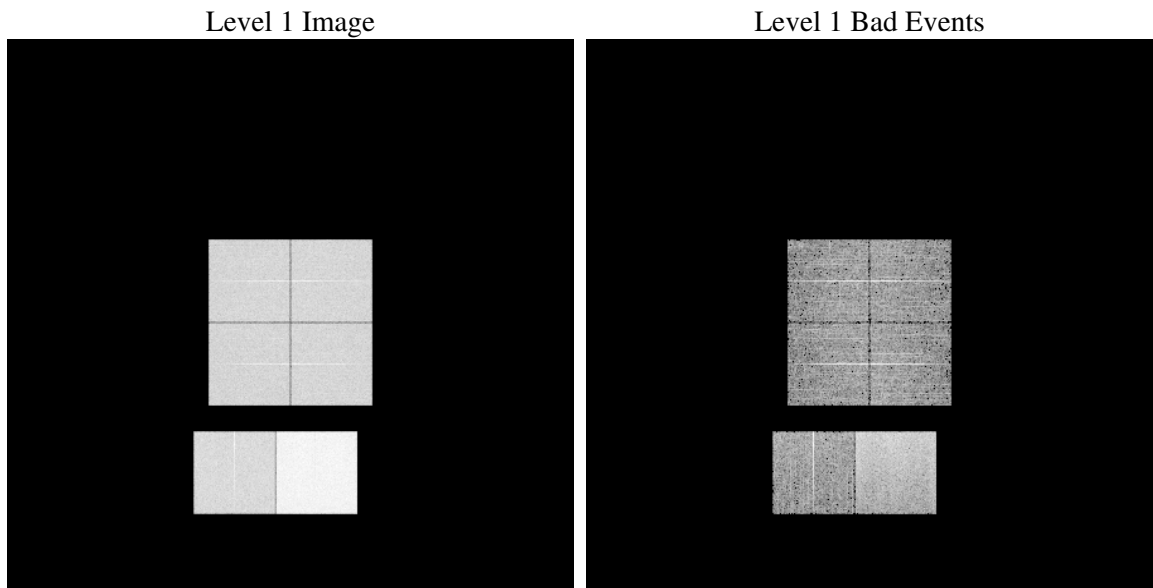
1 Front

seq_num	
obs_id	61112
title	ACIS-012367 diagnostics
observer	CHANDRA engineering request/realtime commanding
object	
dtcycle	0
cycle	P
ra_targ	0.0
dec_targ	0.0
ra_nom	312.02334075477
dec_nom	-48.975840301154
roll_nom	24.822222705322
revision	2
ontime	8393.5999687314
livetime	8287.3151519082
ontime0	3843.2691672444
ontime1	3895.7125447094
ontime2	3743.3927314281
ontime3	3794.6537474394
ontime6	4135.5546740294
ontime7	8393.5999687314
l2events	1287536

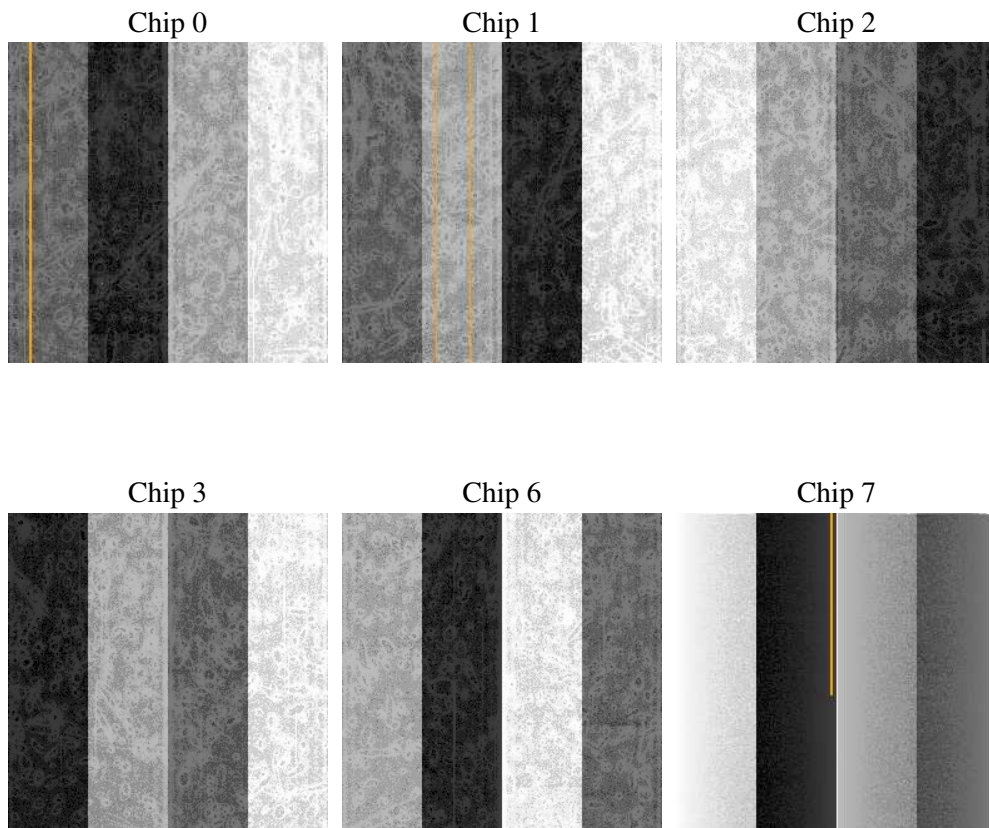
2 OBI

2.1 OBI

2.1.1 Images



2.1.2 Bias



2.1.3 Parameters

obi_num	1
ascdsver	7.6.9
caldbver	3.2.3
date	2006-09-26T18:56:11
revision	2

sched_exp_time	0.0
ontime	8462.2559677064
ontime0	3869.7924432755
ontime1	3928.1304068565
ontime2	3766.0800113678
ontime3	3817.9359336495
ontime6	4171.206084013
ontime7	8462.2559677064
l1events	1555320

2.1.4 Events

	ccd 0	ccd 1	ccd 2	ccd 3	ccd 6	ccd 7
level 1 events	212697	215067	208749	213236	238038	467533
rejected events	28558	28571	28536	29611	31803	64148
rejected %	13%	13%	13%	13%	13%	13%

	ccd 0	ccd 1	ccd 2	ccd 3	ccd 6	ccd 7
grade 0 events	101763	103207	100459	103070	112668	71271
	47%	47%	48%	48%	47%	15%
grade 1 events	518	472	441	538	487	142
	0%	0%	0%	0%	0%	0%
grade 2 events	33416	33722	32566	32909	36946	125262
	15%	15%	15%	15%	15%	26%
grade 3 events	11490	11764	11074	11515	12419	29193
	5%	5%	5%	5%	5%	6%
grade 4 events	11453	11832	11043	11576	12489	28844
	5%	5%	5%	5%	5%	6%
grade 5 events	1815	1911	1772	1892	2225	7665
	0%	0%	0%	0%	0%	1%
grade 6 events	27313	27481	26160	25653	33584	152067
	12%	12%	12%	12%	14%	32%
grade 7 events	24929	24678	25234	26083	27220	53089
	11%	11%	12%	12%	11%	11%

2.2 Compared Parameters

Parameter	Planned	Actual	Parameter	Planned	Actual
Instrument	ACIS	ACIS	Obspar format version number	6	6
Detector	ACIS-012367	ACIS-012367	Obspar file type	PREDICTED	ACTUAL
Grating	NONE	NONE	Obspar update status	NONE	UPDATED
Data mode	FAINT	FAINT	On-chip summing requested	N	N
Observation mode	SECONDARY	SECONDARY	Subarray requested	NONE	NONE
Pointing RA	0	312.023340754766	Alternating exposures requested	N	N
Pointing Dec	0	-48.9758403011538	Primary exposure time	0.000000	3.2
Pointing Roll	0.0	24.8222227053224			
SIM focus pos (mm)	-0.782348	-0.6828225247311905			
SIM defocus (mm)	0	0.8505141146731063			
SIM translation stage pos (mm)	-233.592463	250.466033080201			
SIM translation stage offset (mm)	0	-0.01005468664627074			
Observation start time	143499557.801	143499556.77591			
Observation start date	2002-07-19T20:59:18	2002-07-19T20:59:16			
Observation end time	143521755.202	143521754.17682			
Observation end date	2002-07-20T03:09:15	2002-07-20T03:09:14			
Read mode	TIMED	TIMED			

2.3 Aspect

2.4 Star Slots

2.5 FID Slots

A Summary

A.1 Status

V&V Scientist	Jen Lauer
V&V Date (YYYY-MM-DD)	2006.09.27
V&V Edition	1
V&V Disposition and Status	OK
V&V Charge Time	8.39359996

A.2 Comments

The ACIS focal plane temperature was above calibration limits for the entire observation.