

V&V Reference Report

L2 ASCDS Version : 7.6.9

Observation 61052 - L2 Version 001
Chandra X-Ray Center

L2 Processing Date : Oct 2 2006

Contents

1	Front	2
2	OBI	3
2.1	OBI	3
2.1.1	Images	3
2.1.2	Bias	3
2.1.3	Parameters	4
2.1.4	Events	4
2.2	Compared Parameters	5
2.3	Aspect	6
2.4	Star Slots	8
2.5	FID Slots	8
A	Summary	9
A.1	Status	9
A.2	Comments	9

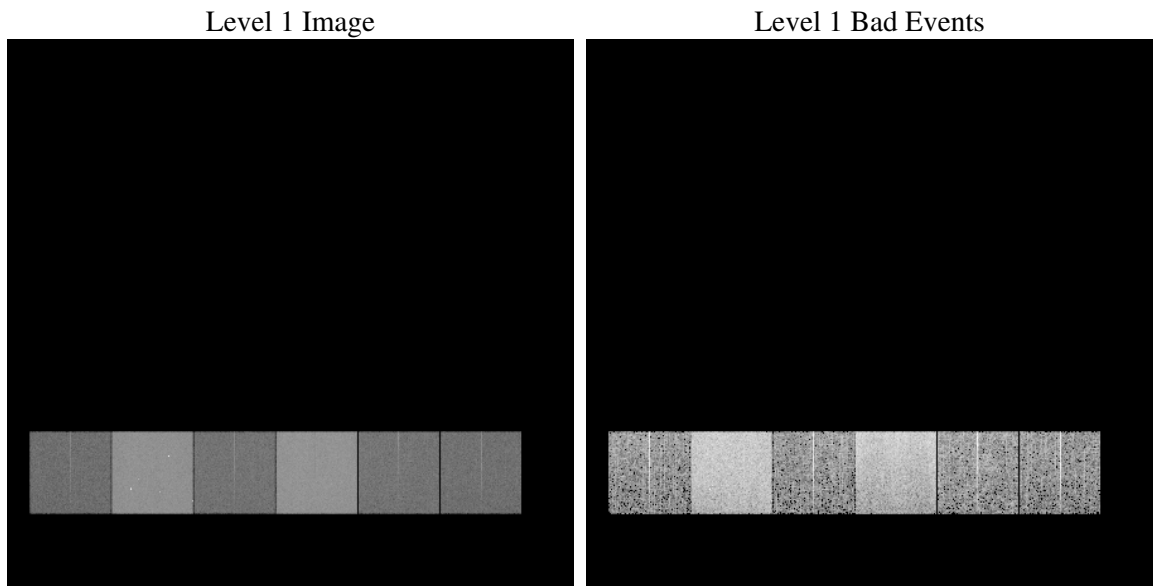
1 Front

seq_num	
obs_id	61052
title	ACIS-456789 diagnostics
observer	CHANDRA engineering request/realtime commanding
object	
dtcycle	0
cycle	P
ra_targ	0.0
dec_targ	0.0
ra_nom	235.01022196168
dec_nom	-20.026961173089
roll_nom	256.7914903796
revision	2
ontime	7541.6833309531
livetime	7446.1859955601
ontime4	2764.5997864306
ontime5	7794.5193020403
ontime6	3014.1179090738
ontime7	7541.6833309531
ontime8	3046.5725695491
ontime9	2884.3539767563
l2events	1187434

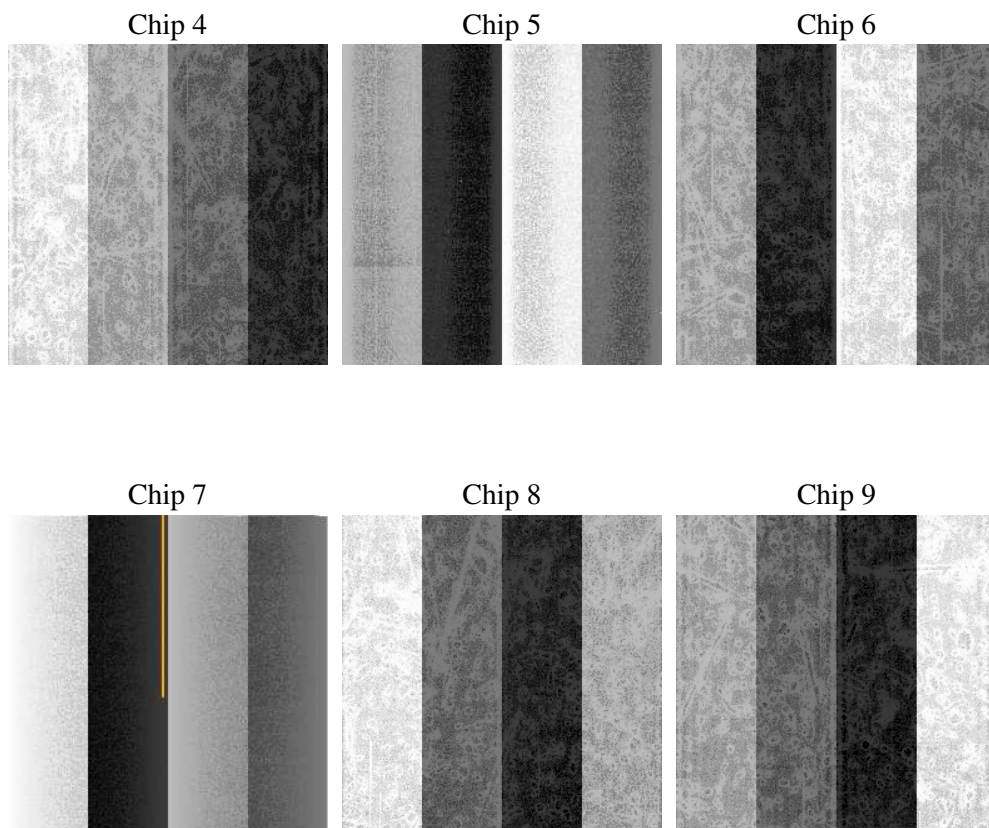
2 OBI

2.1 OBI

2.1.1 Images



2.1.2 Bias



2.1.3 Parameters

obi_num	1
ascdsver	7.6.9
caldsver	3.2.3
date	2006-10-03T00:50:37
revision	2

sched_exp_time	0.0
ontime	7541.8100404739
ontime4	2764.6033759415
ontime5	7794.6049715579
ontime6	3014.162538588
ontime7	7541.8100404739
ontime8	3046.5725695491
ontime9	2884.5217262805
l1events	1436339

2.1.4 Events

	ccd 4	ccd 5	ccd 6	ccd 7	ccd 8	ccd 9
level 1 events	146636	384380	169195	406756	173487	155885
rejected events	20407	59494	20806	50710	23244	19862
rejected %	13%	15%	12%	12%	13%	12%

	ccd 4	ccd 5	ccd 6	ccd 7	ccd 8	ccd 9
grade 0 events	73265	40671	81199	66117	82602	75308
	49%	10%	47%	16%	47%	48%
grade 1 events	485	194	391	161	409	402
	0%	0%	0%	0%	0%	0%
grade 2 events	20310	154880	25886	106585	26199	23147
	13%	40%	15%	26%	15%	14%
grade 3 events	8338	10966	9196	26780	9666	8762
	5%	2%	5%	6%	5%	5%
grade 4 events	8373	10873	9064	26900	9661	8605
	5%	2%	5%	6%	5%	5%
grade 5 events	1331	6750	1530	6941	1655	1522
	0%	1%	0%	1%	0%	0%
grade 6 events	15943	107496	23044	129664	22115	20201
	10%	27%	13%	31%	12%	12%
grade 7 events	18591	52550	18885	43608	21180	17938
	12%	13%	11%	10%	12%	11%

2.2 Compared Parameters

Parameter	Planned	Actual	Parameter	Planned	Actual
Instrument	ACIS	ACIS	Obspar format version number	6	6
Detector	ACIS-456789	ACIS-456789	Obspar file type	PREDICTED	ACTUAL
Grating	NONE	NONE	Obspar update status	NONE	UPDATED
Data mode	FAINT	FAINT	On-chip summing requested	N	N
Observation mode	SECONDARY	SECONDARY	Subarray requested	NONE	NONE
Pointing RA	0	235.0102219616821	Alternating exposures requested	N	N
Pointing Dec	0	-20.02696117308898	Primary exposure time	0.000000	3.2
Pointing Roll	0.0	256.7914903795952			
SIM focus pos (mm)	-0.684267	-0.7809083437167272			
SIM defocus (mm)	0	0.7524282956875696			
SIM translation stage pos (mm)	-190.132523	250.4635187648994			
SIM translation stage offset (mm)	0	-0.007540371344731511			
Observation start time	147354972.459399	147354971.43469			
Observation start date	2002-09-02T11:56:12	2002-09-02T11:56:11			
Observation end time	147385226.360647	147385225.33594			
Observation end date	2002-09-02T20:20:26	2002-09-02T20:20:25			
Read mode	TIMED	TIMED			

2.3 Aspect

2.4 Star Slots

2.5 FID Slots

A Summary

A.1 Status

V&V Scientist	Jen Lauer
V&V Date (YYYY-MM-DD)	2006.10.03
V&V Edition	1
V&V Disposition and Status	OK
V&V Charge Time	7.54168333

A.2 Comments