

V&V Reference Report

L2 ASCDS Version : 7.6.9

Observation 61012 - L2 Version 001
Chandra X-Ray Center

L2 Processing Date : Oct 5 2006

Contents

1	Front	2
2	OBI	3
2.1	OBI	3
2.1.1	Images	3
2.1.2	Bias	3
2.1.3	Parameters	4
2.1.4	Events	4
2.2	Compared Parameters	5
2.3	Aspect	6
2.4	Star Slots	8
2.5	FID Slots	8
A	Summary	9
A.1	Status	9
A.2	Comments	9

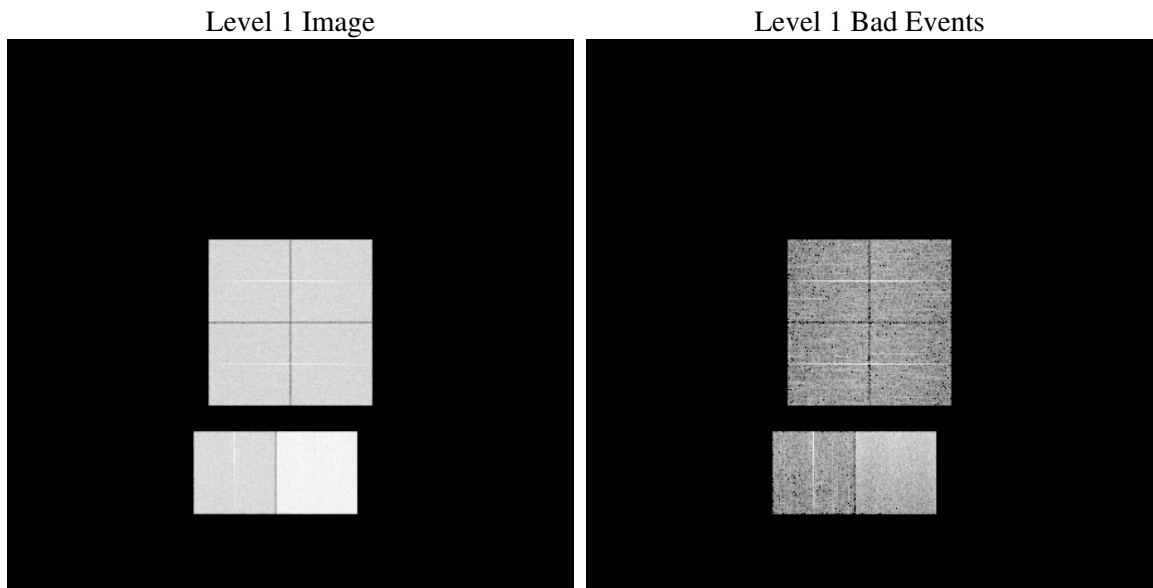
1 Front

seq_num	
obs_id	61012
title	ACIS-012367 diagnostics
observer	CHANDRA engineering request/realtime commanding
object	
dtcycle	0
cycle	P
ra_targ	0.0
dec_targ	0.0
ra_nom	298.23083971706
dec_nom	-44.818418384154
roll_nom	287.09311936699
revision	2
ontime	8431.9999685884
livetime	8325.2289078453
ontime0	4153.8763326705
ontime1	4170.1212774217
ontime2	3881.6714354455
ontime3	4024.2761191726
ontime6	4332.2519288957
ontime7	8431.9999685884
l2events	1284369

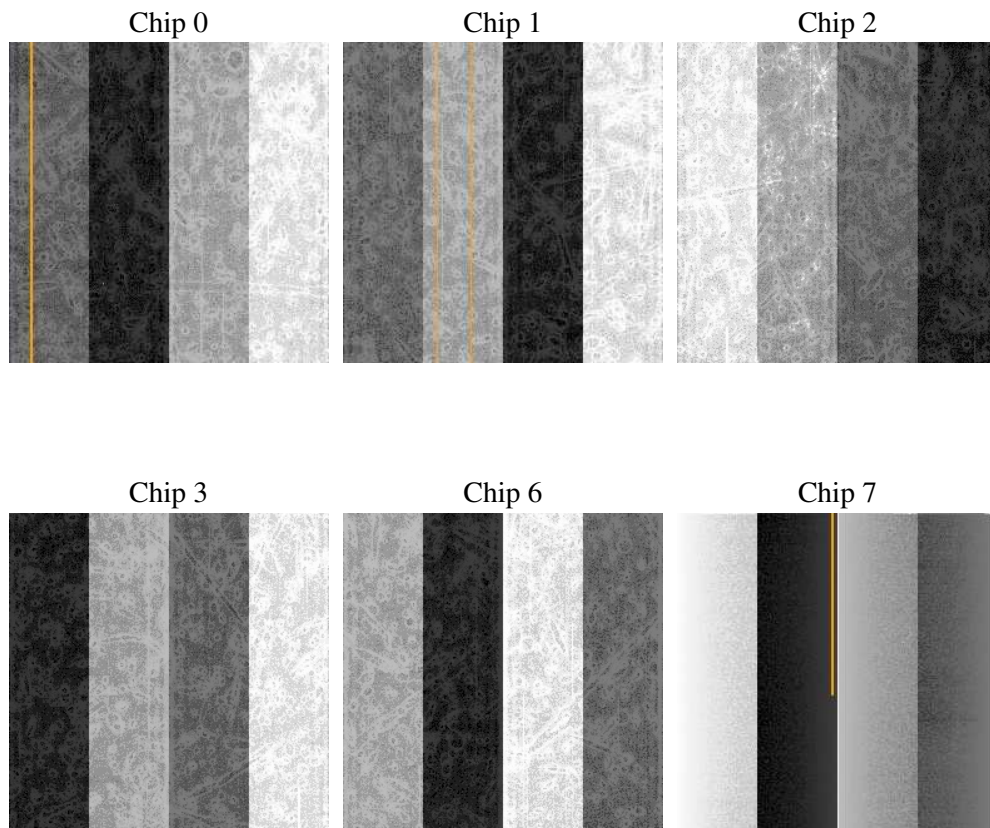
2 OBI

2.1 OBI

2.1.1 Images



2.1.2 Bias



2.1.3 Parameters

obi_num	0
ascdsver	7.6.9
caldbver	3.2.3
date	2006-10-06T01:16:44
revision	2

sched_exp_time	0.0
ontime	8465.4945904016
ontime0	4167.9656721652
ontime1	4187.4106467664
ontime2	3895.720156014
ontime3	4041.5658797324
ontime6	4352.7001785636
ontime7	8465.4945904016
l1events	1552987

2.1.4 Events

	ccd 0	ccd 1	ccd 2	ccd 3	ccd 6	ccd 7
level 1 events	218022	220160	209018	215513	239265	451009
rejected events	28300	29756	29520	28758	31624	62779
rejected %	12%	13%	14%	13%	13%	13%

	ccd 0	ccd 1	ccd 2	ccd 3	ccd 6	ccd 7
grade 0 events	105337	105319	101424	105322	114078	68997
	48%	47%	48%	48%	47%	15%
grade 1 events	563	485	620	577	531	169
	0%	0%	0%	0%	0%	0%
grade 2 events	33196	33725	30156	31819	35935	119448
	15%	15%	14%	14%	15%	26%
grade 3 events	12337	12271	11785	12188	12799	28385
	5%	5%	5%	5%	5%	6%
grade 4 events	12209	11885	11623	12408	12875	27788
	5%	5%	5%	5%	5%	6%
grade 5 events	1908	1947	1764	1987	2232	7936
	0%	0%	0%	0%	0%	1%
grade 6 events	27239	27970	25097	25739	32926	145064
	12%	12%	12%	11%	13%	32%
grade 7 events	25233	26558	26549	25473	27889	53222
	11%	12%	12%	11%	11%	11%

2.2 Compared Parameters

Parameter	Planned	Actual	Parameter	Planned	Actual
Instrument	ACIS	ACIS	Obspar format version number	6	6
Detector	ACIS-012367	ACIS-012367	Obspar file type	PREDICTED	ACTUAL
Grating	NONE	NONE	Obspar update status	NONE	UPDATED
Data mode	FAINT	FAINT	On-chip summing requested	N	N
Observation mode	SECONDARY	SECONDARY	Subarray requested	NONE	NONE
Pointing RA	0	298.2308397170584	Alternating exposures requested	N	N
Pointing Dec	0	-44.81841838415449	Primary exposure time	3.2	3.2
Pointing Roll	0.0	287.0931193669946			
SIM focus pos (mm)	-0.782348	-0.6828225247311905			
SIM defocus (mm)	0	0.8505141146731063			
SIM translation stage pos (mm)	-233.592463	250.466033080201			
SIM translation stage offset (mm)	0	-0.01005468664627074			
Observation start time	149898967.214604	149898966.18987			
Observation start date	2002-10-01T22:36:07	2002-10-01T22:36:06			
Observation end time	149922814.865593	149922813.84086			
Observation end date	2002-10-02T05:13:35	2002-10-02T05:13:33			
Read mode	TIMED	TIMED			

2.3 Aspect

2.4 Star Slots

2.5 FID Slots

A Summary

A.1 Status

V&V Scientist	Jen Lauer
V&V Date (YYYY-MM-DD)	2006.10.06
V&V Edition	1
V&V Disposition and Status	OK
V&V Charge Time	8.43199996

A.2 Comments

The ACIS focal plane temperature was above calibration limits for the entire observation.