

# V&V Reference Report

## L2 ASCDS Version : 7.6.9

Observation 60982 - L2 Version 001  
Chandra X-Ray Center

L2 Processing Date : Oct 12 2006

## Contents

<b>1</b>	<b>Front</b>	<b>2</b>
<b>2</b>	<b>OBI</b>	<b>3</b>
2.1	OBI . . . . .	3
2.1.1	Images . . . . .	3
2.1.2	Bias . . . . .	3
2.1.3	Parameters . . . . .	4
2.1.4	Events . . . . .	4
2.2	Compared Parameters . . . . .	5
2.3	Aspect . . . . .	6
2.4	Star Slots . . . . .	8
2.5	FID Slots . . . . .	8
<b>A</b>	<b>Summary</b>	<b>9</b>
A.1	Status . . . . .	9
A.2	Comments . . . . .	9

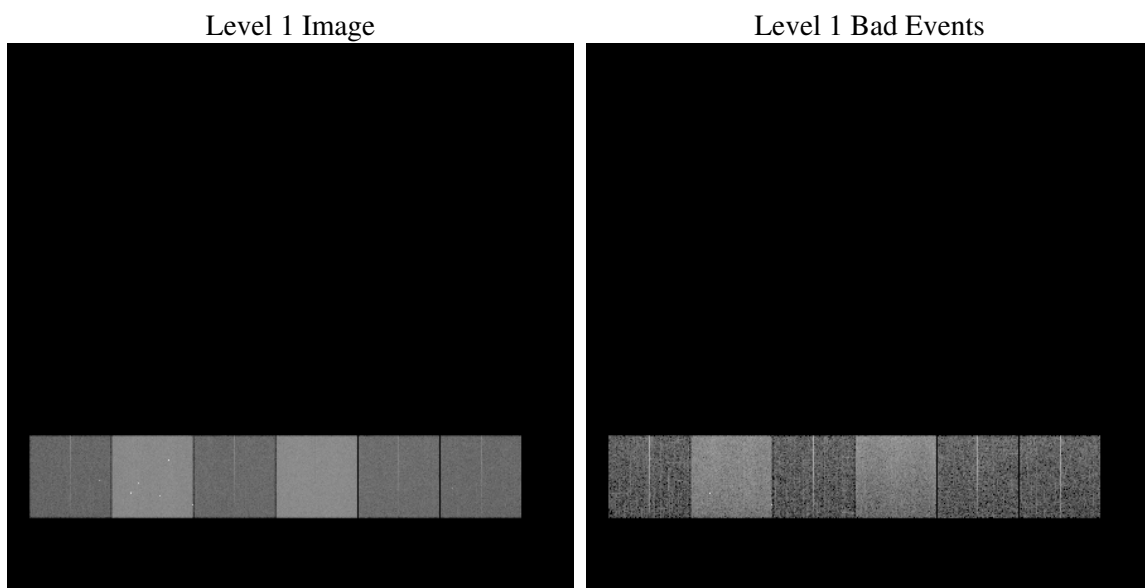
# 1 Front

seq_num	&#160
obs_id	60982
title	ACIS-456789 diagnostics
observer	CHANDRA engineering request/realtime commanding
object	&#160
dtcycle	0
cycle	P
ra_targ	0.0
dec_targ	0.0
ra_nom	110.34171899
dec_nom	55.783765554753
roll_nom	91.014993465622
revision	2
ontime	7275.3040724397
livetime	7183.1797916123
ontime4	2616.8288747966
ontime5	7712.8342088461
ontime6	2788.5625359416
ontime7	7275.3040724397
ontime8	2931.2503356338
ontime9	2749.5469958186
l2events	1264327

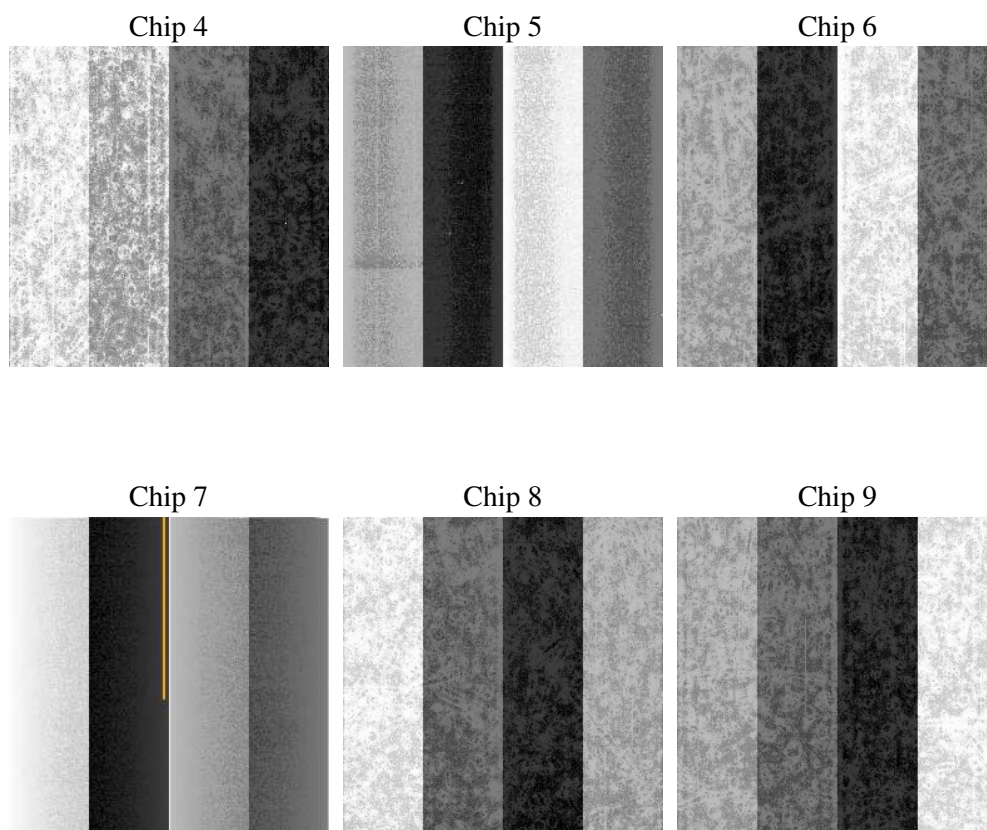
## 2 OBI

### 2.1 OBI

#### 2.1.1 Images



#### 2.1.2 Bias



### 2.1.3 Parameters

obi_num	1
ascdsver	7.6.9
caldsver	3.2.3
date	2006-10-12T04:11:43
revision	2

sched_exp_time	0.0
ontime	7321.4345647395
ontime4	2631.7219521105
ontime5	7758.9647011459
ontime6	2813.2197234035
ontime7	7321.4345647395
ontime8	2952.5844529569
ontime9	2774.3273032904
l1events	1560587

### 2.1.4 Events

	ccd 4	ccd 5	ccd 6	ccd 7	ccd 8	ccd 9
level 1 events	160807	422307	178453	434510	191101	173409
rejected events	25906	69970	26420	60723	27513	26069
rejected %	16%	16%	14%	13%	14%	15%

	ccd 4	ccd 5	ccd 6	ccd 7	ccd 8	ccd 9
grade 0 events	78215	40360	81688	65956	89242	81185
	48%	9%	45%	15%	46%	46%
grade 1 events	734	216	520	151	589	593
	0%	0%	0%	0%	0%	0%
grade 2 events	20739	170361	26670	116801	28357	24729
	12%	40%	14%	26%	14%	14%
grade 3 events	9043	10364	9297	25951	10317	9270
	5%	2%	5%	5%	5%	5%
grade 4 events	8882	9805	9286	25298	10300	9320
	5%	2%	5%	5%	5%	5%
grade 5 events	1583	7292	1715	6911	2028	1746
	0%	1%	0%	1%	1%	1%
grade 6 events	18745	123383	26343	142038	26453	24058
	11%	29%	14%	32%	13%	13%
grade 7 events	22866	60526	22934	51404	23815	22508
	14%	14%	12%	11%	12%	12%

## 2.2 Compared Parameters

Parameter	Planned	Actual	Parameter	Planned	Actual
Instrument	ACIS	ACIS	Obspar format version number	6	6
Detector	ACIS-456789	ACIS-456789	Obspar file type	PREDICTED	ACTUAL
Grating	NONE	NONE	Obspar update status	NONE	UPDATED
Data mode	FAINT	FAINT	On-chip summing requested	N	N
Observation mode	SECONDARY	SECONDARY	Subarray requested	NONE	NONE
Pointing RA	0	110.3417189900042	Alternating exposures requested	N	N
Pointing Dec	0	55.78376555475275	Primary exposure time	3.2	3.2
Pointing Roll	0.0	91.01499346562184			
SIM focus pos (mm)	-0.684267	-0.6828225247311905			
SIM defocus (mm)	0	0.8505141146731063			
SIM translation stage pos (mm)	-190.132523	250.466033080201			
SIM translation stage offset (mm)	0	-0.01005468664627074			
Observation start time	151952987.349767	151952986.32505			
Observation start date	2002-10-25T17:09:47	2002-10-25T17:09:46			
Observation end time	151977532.000786	151977530.97607			
Observation end date	2002-10-25T23:58:52	2002-10-25T23:58:50			
Read mode	TIMED	TIMED			

## 2.3 Aspect



## 2.4 Star Slots

## 2.5 FID Slots



## A Summary

### A.1 Status

V&V Scientist	Jen Lauer
V&V Date (YYYY-MM-DD)	2006.10.12
V&V Edition	1
V&V Disposition and Status	OK
V&V Charge Time	7.27530407

### A.2 Comments

The ACIS focal plane temperature was above calibration limits for the entire observation.