

V&V Reference Report

L2 ASCDS Version : 8.4.5

Observation 60972 - L2 Version 3
Chandra X-Ray Center

L2 Processing Date : Oct 17 2012

Contents

1	Front	2
2	OBI	3
2.1	OBI	3
2.1.1	Images	3
2.1.2	Bias	3
2.1.3	Parameters	4
2.1.4	Events	4
2.2	Compared Parameters	5
2.3	Star Slots	6
2.4	FID Slots	6
A	Summary	7
A.1	Status	7
A.2	Comments	7

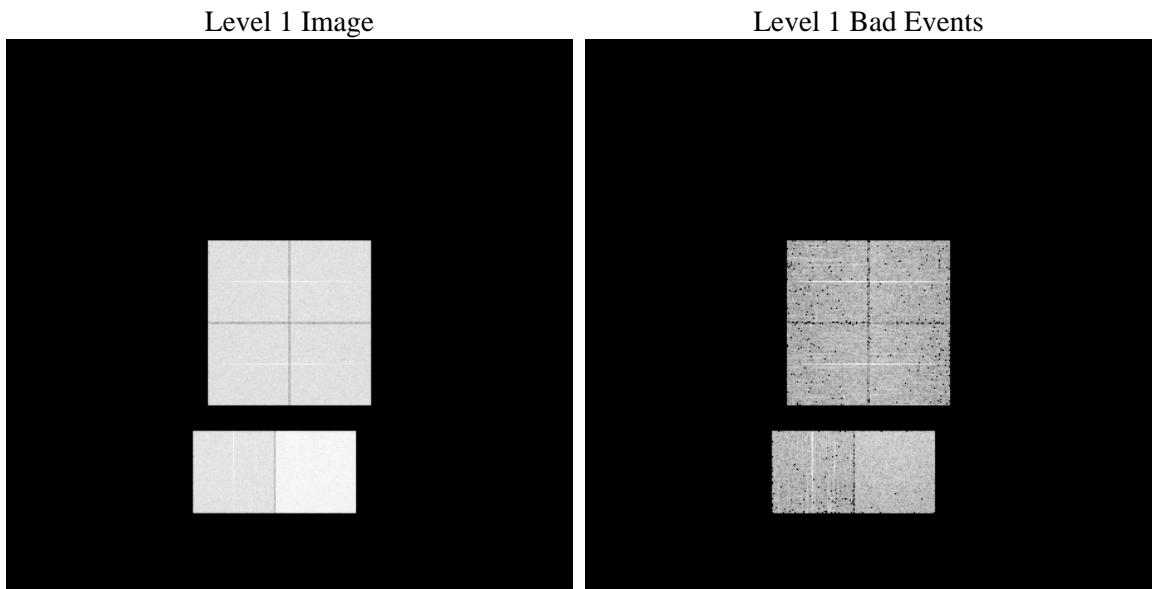
1 Front

seq_num	 	Sequence number
obs_id	60972	Observation id
title	ACIS-012367 diagnostics	Proposal title
observer	CHANDRA engineering request/realtime commanding	Principal investig
object	 	Source name
dtcycle	0	
cycle	P	events from which exps? Prim/Second/Both
ra_targ	0.0	Observer's specified target RA [deg]
dec_targ	0.0	Observer's specified target Dec [deg]
ra_nom	0.018707928965057	Nominal RA [deg]
dec_nom	14.977756763918	Nominal Dec [deg]
roll_nom	276.22622083887	Nominal Roll [deg]
revision	3	Processing version of data
ontime	7797.1963397264	Sum of GTIs [s]
livetime	7698.4635447649	Livetime [s]
ontime0	3817.93381235	Sum of GTIs [s]
ontime1	3931.3682490289	Sum of GTIs [s]
ontime2	3746.6314598918	Sum of GTIs [s]
ontime3	3730.4264495671	Sum of GTIs [s]
ontime6	4125.8279583752	Sum of GTIs [s]
ontime7	7797.1963397264	Sum of GTIs [s]
l2events	1209645	Number of level 2 events

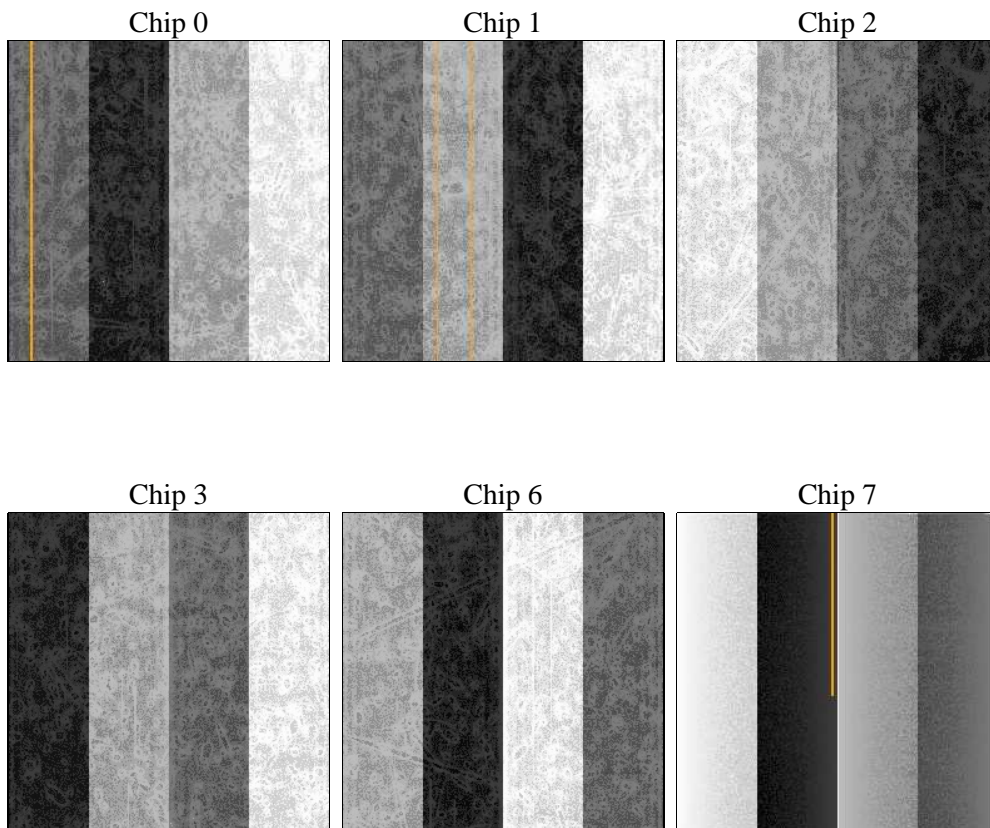
2 OBI

2.1 OBI

2.1.1 Images



2.1.2 Bias



2.1.3 Parameters

obi_num	0	Obi number	sched_exp_time	0.0	[s] Scheduled observation exposure time
ascdsver	8.4.5	Processing system revision	ontime	7797.1963397264	Sum of GTIs [s]
caldsver	4.5.2	 	ontime0	3817.93381235	Sum of GTIs [s]
date	2012-10-17T06:50:25	Date and time of file creation	ontime1	3931.3682490289	Sum of GTIs [s]
revision	3	Processing version of data	ontime2	3746.6314598918	Sum of GTIs [s]
			ontime3	3730.4264495671	Sum of GTIs [s]
			ontime6	4125.8279583752	Sum of GTIs [s]
			ontime7	7797.1963397264	Sum of GTIs [s]
			l1events	1432816	Number of level 1 events

2.1.4 Events

	ccd 0	ccd 1	ccd 2	ccd 3	ccd 6	ccd 7		ccd 0	ccd 1	ccd 2	ccd 3	ccd 6	ccd 7
level 1 events	198385	204161	197364	197816	224974	410116	grade 0 events	95630	98554	96732	96777	107238	93632
rejected events	25151	25386	25216	26326	27981	39188		48%	48%	49%	48%	47%	22%
rejected %	12%	12%	12%	13%	12%	9%	grade 1 events	503	487	575	532	509	261
								0%	0%	0%	0%	0%	0%
							grade 2 events	30184	31702	29270	29265	33947	81836
								15%	15%	14%	14%	15%	19%
							grade 3 events	11224	11222	11175	11071	12305	37422
								5%	5%	5%	5%	5%	9%
							grade 4 events	11237	11352	11110	11142	12236	37031
								5%	5%	5%	5%	5%	9%
							grade 5 events	1770	1794	1646	1842	2071	7940
								0%	0%	0%	0%	0%	1%
							grade 6 events	24959	25945	23861	23235	31267	121007
								12%	12%	12%	11%	13%	29%
							grade 7 events	22878	23105	22995	23952	25401	30987
								11%	11%	11%	12%	11%	7%

2.2 Compared Parameters

Parameter	Planned	Actual
Instrument	ACIS	ACIS
Detector	ACIS-012367	ACIS-012367
Grating	NONE	NONE
Data mode	FAINT	FAINT
Observation mode	SECONDARY	SECONDARY
[deg] Pointing RA	0	0.01870792896505691
[deg] Pointing Dec	0	14.97775676391775
[deg] Pointing Roll	0.0	276.2262208388684
[mm] SIM focus pos	-0.782348	-0.7809083437167272
[mm] SIM defocus	0	0.7524282956875696
[mm] SIM translation stage pos	-233.592463	250.466033080201
[mm] SIM translation stage offset	0	-0.01005468664627074
[s] Observation start time (MET)	152830832.236269	152830831.21154
Observation start date	2002-11-04T21:00:32	2002-11-04T21:00:31
[s] Observation end time (MET)	152842037.536736	152842036.51201
Observation end date	2002-11-05T00:07:18	2002-11-05T00:07:16
Read mode	TIMED	TIMED

Parameter	Planned	Actual
Obspar format version number	7	7
Obspar file type	PREDICTED	ACTUAL
Obspar update status	NONE	UPDATED
On-chip summing requested	N	N
Subarray requested	NONE	NONE
Alternating exposures requested	N	N
[s] Primary exposure time	0.000000	3.2

2.3 Star Slots

2.4 FID Slots

A Summary

A.1 Status

V&V Scientist	Beth Sundheim
V&V Date (YYYY-MM-DD)	2012.10.25
V&V Edition	1
V&V Disposition and Status	OK
V&V Charge Time	7.7971963397264

A.2 Comments