

V&V Reference Report

L2 ASCDS Version : 7.6.9

Observation 60972 - L2 Version 001
Chandra X-Ray Center

L2 Processing Date : Oct 12 2006

Contents

1	Front	2
2	OBI	3
2.1	OBI	3
2.1.1	Images	3
2.1.2	Bias	3
2.1.3	Parameters	4
2.1.4	Events	4
2.2	Compared Parameters	5
2.3	Aspect	6
2.4	Star Slots	8
2.5	FID Slots	8
A	Summary	9
A.1	Status	9
A.2	Comments	9

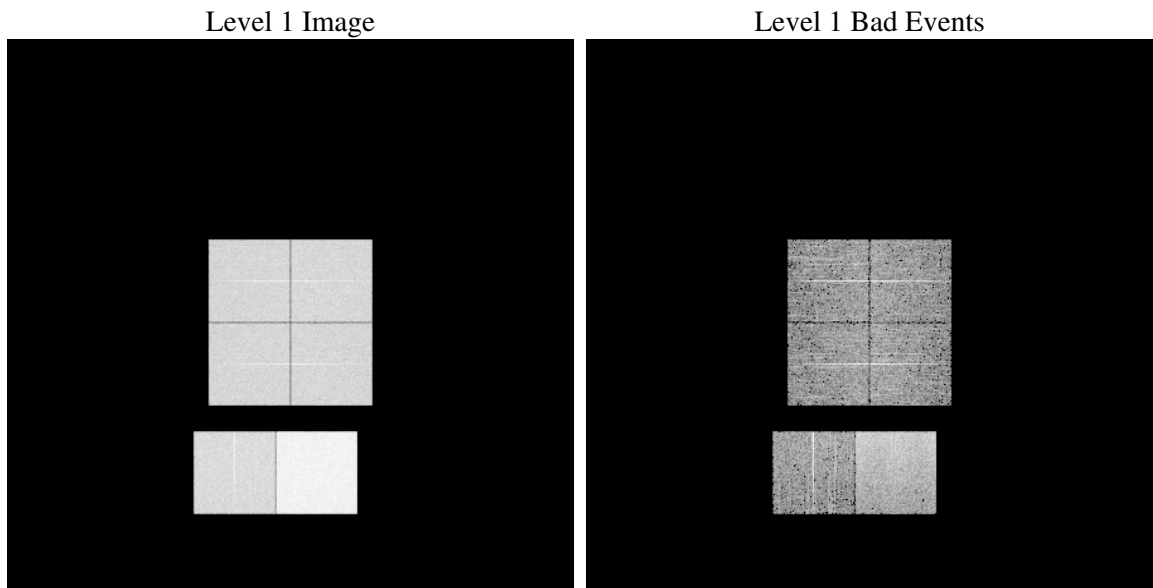
1 Front

seq_num	
obs_id	60972
title	ACIS-012367 diagnostics
observer	CHANDRA engineering request/realtime commanding
object	
dtcycle	0
cycle	P
ra_targ	0.0
dec_targ	0.0
ra_nom	0.018707928965008
dec_nom	14.977756763918
roll_nom	276.22622083887
revision	2
ontime	7797.4541453719
livetime	7698.71808592
ontime0	3817.5784835815
ontime1	3931.0539602637
ontime2	3746.3582111299
ontime3	3729.989040792
ontime6	4125.5957495868
ontime7	7797.4541453719
l2events	1196966

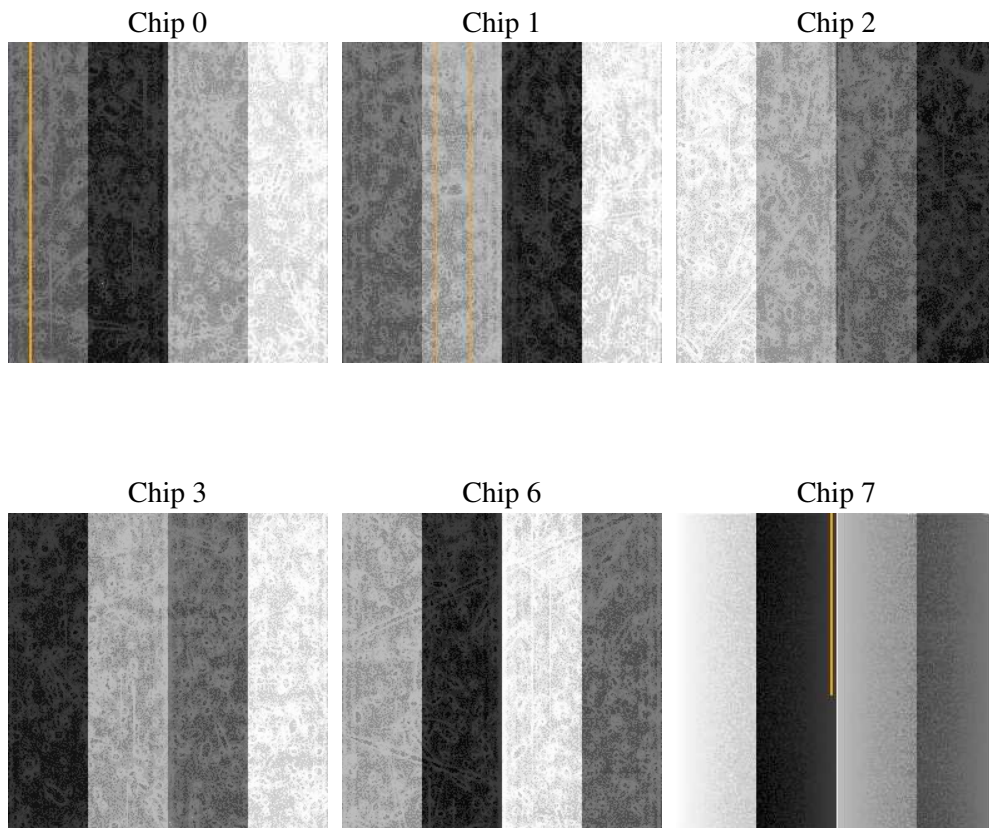
2 OBI

2.1 OBI

2.1.1 Images



2.1.2 Bias



2.1.3 Parameters

obi_num	0
ascdsver	7.6.9
caldbver	3.2.3
date	2006-10-12T05:26:52
revision	2

sched_exp_time	0.0
ontime	7797.8505141437
ontime0	3817.93381235
ontime1	3931.3682490289
ontime2	3746.6314598918
ontime3	3730.4264495671
ontime6	4125.8279583752
ontime7	7797.8505141437
l1events	1432816

2.1.4 Events

	ccd 0	ccd 1	ccd 2	ccd 3	ccd 6	ccd 7
level 1 events	198385	204161	197364	197816	224974	410116
rejected events	25151	25387	25216	26326	27981	51993
rejected %	12%	12%	12%	13%	12%	12%

	ccd 0	ccd 1	ccd 2	ccd 3	ccd 6	ccd 7
grade 0 events	95630	98554	96731	96776	107238	65654
	48%	48%	49%	48%	47%	16%
grade 1 events	503	487	575	532	509	166
	0%	0%	0%	0%	0%	0%
grade 2 events	30184	31702	29271	29266	33947	107816
	15%	15%	14%	14%	15%	26%
grade 3 events	11224	11222	11175	11071	12305	26625
	5%	5%	5%	5%	5%	6%
grade 4 events	11237	11353	11109	11141	12236	26256
	5%	5%	5%	5%	5%	6%
grade 5 events	1771	1794	1646	1842	2071	7052
	0%	0%	0%	0%	0%	1%
grade 6 events	24959	25943	23862	23236	31267	131772
	12%	12%	12%	11%	13%	32%
grade 7 events	22877	23106	22995	23952	25401	44775
	11%	11%	11%	12%	11%	10%

2.2 Compared Parameters

Parameter	Planned	Actual	Parameter	Planned	Actual
Instrument	ACIS	ACIS	Obspar format version number	6	6
Detector	ACIS-012367	ACIS-012367	Obspar file type	PREDICTED	ACTUAL
Grating	NONE	NONE	Obspar update status	NONE	UPDATED
Data mode	FAINT	FAINT	On-chip summing requested	N	N
Observation mode	SECONDARY	SECONDARY	Subarray requested	NONE	NONE
Pointing RA	0	0.01870792896500775	Alternating exposures requested	N	N
Pointing Dec	0	14.97775676391776	Primary exposure time	0.000000	3.2
Pointing Roll	0.0	276.2262208388684			
SIM focus pos (mm)	-0.782348	-0.7809083437167272			
SIM defocus (mm)	0	0.7524282956875696			
SIM translation stage pos (mm)	-233.592463	250.466033080201			
SIM translation stage offset (mm)	0	-0.01005468664627074			
Observation start time	152830832.236269	152830831.21154			
Observation start date	2002-11-04T21:00:32	2002-11-04T21:00:31			
Observation end time	152842037.536736	152842036.51201			
Observation end date	2002-11-05T00:07:18	2002-11-05T00:07:16			
Read mode	TIMED	TIMED			

2.3 Aspect

2.4 Star Slots

2.5 FID Slots

A Summary

A.1 Status

V&V Scientist	Jen Lauer
V&V Date (YYYY-MM-DD)	2006.10.12
V&V Edition	1
V&V Disposition and Status	OK
V&V Charge Time	7.79745414

A.2 Comments