

V&V Reference Report

L2 ASCDS Version : 7.6.9

Observation 60962 - L2 Version 001
Chandra X-Ray Center

L2 Processing Date : Oct 9 2006

Contents

1	Front	2
2	OBI	3
2.1	OBI	3
2.1.1	Images	3
2.1.2	Bias	3
2.1.3	Parameters	4
2.1.4	Events	4
2.2	Compared Parameters	5
2.3	Aspect	6
2.4	Star Slots	8
2.5	FID Slots	8
A	Summary	9
A.1	Status	9
A.2	Comments	9

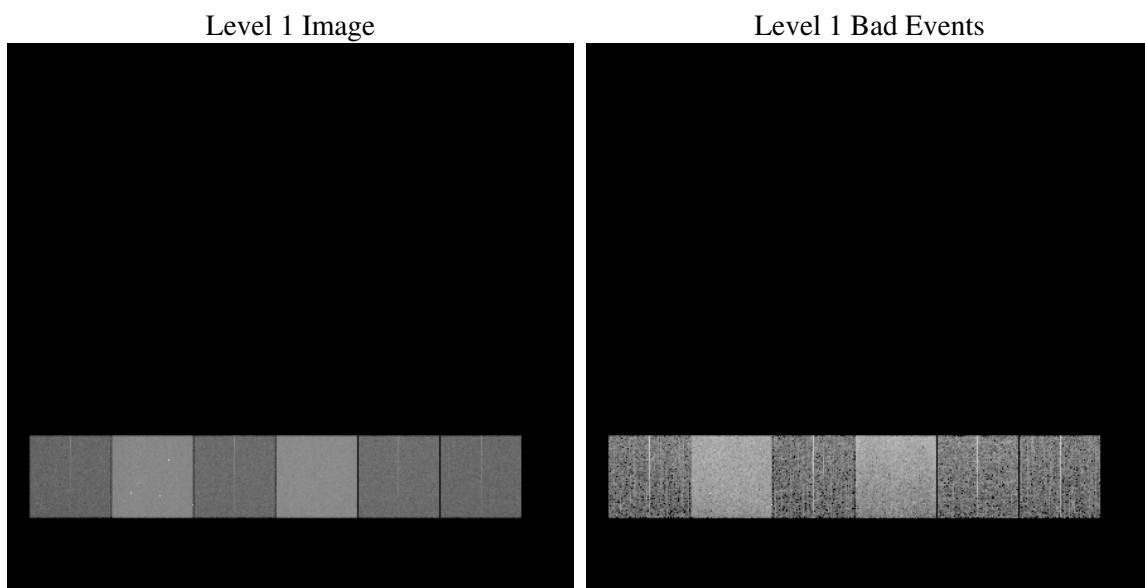
1 Front

seq_num	
obs_id	60962
title	ACIS-456789 diagnostics
observer	CHANDRA engineering request/realtime commanding
object	
dtcycle	0
cycle	P
ra_targ	0.0
dec_targ	0.0
ra_nom	42.629457106329
dec_nom	-28.887626123069
roll_nom	352.78249459428
revision	2
ontime	8435.1999685764
livetime	8328.3883875067
ontime4	3143.0413636267
ontime5	8435.1999685764
ontime6	3402.2818396389
ontime7	8435.1999685764
ontime8	3509.3180398941
ontime9	3334.098154664
l2events	1267841

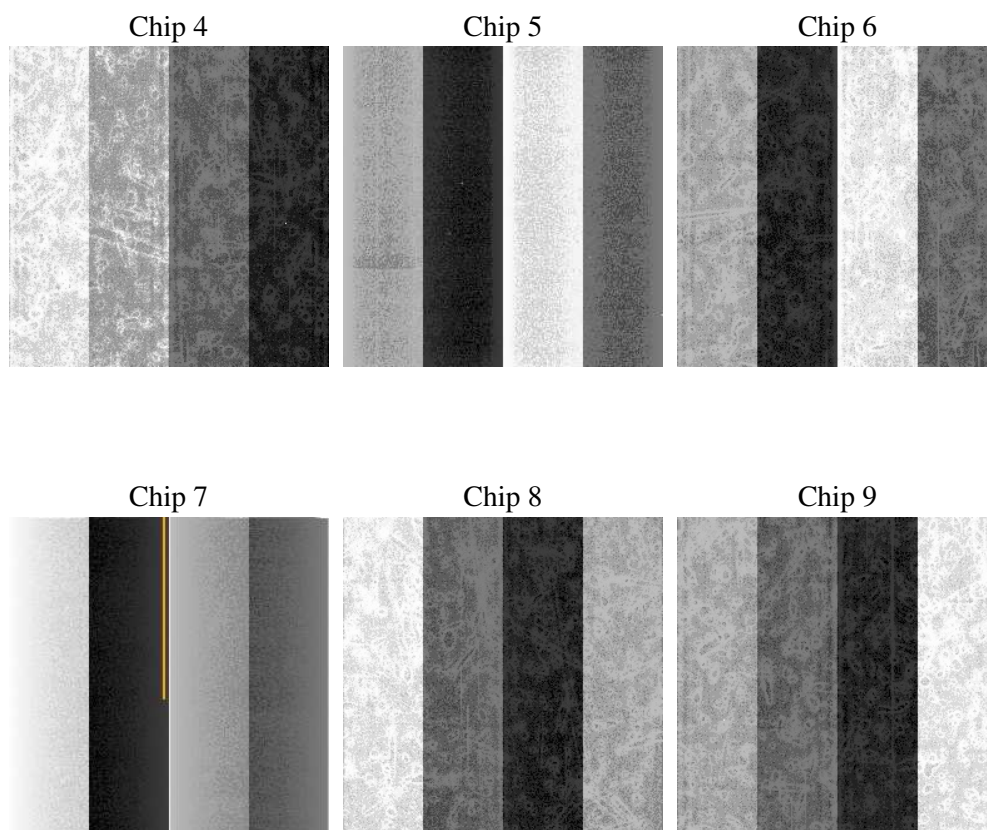
2 OBI

2.1 OBI

2.1.1 Images



2.1.2 Bias



2.1.3 Parameters

obi_num	1
ascdsver	7.6.9
caldsver	3.2.3
date	2006-10-09T19:07:39
revision	2

sched_exp_time	0.0
ontime	8436.3329508007
ontime4	3143.8044085205
ontime5	8436.3329508007
ontime6	3403.085924536
ontime7	8436.3329508007
ontime8	3510.0400448143
ontime9	3335.025359571
l1events	1542400

2.1.4 Events

	ccd 4	ccd 5	ccd 6	ccd 7	ccd 8	ccd 9
level 1 events	158884	401030	182461	435814	191149	173062
rejected events	22763	64873	23202	56242	25461	23086
rejected %	14%	16%	12%	12%	13%	13%

	ccd 4	ccd 5	ccd 6	ccd 7	ccd 8	ccd 9
grade 0 events	78954	41452	86706	69102	91366	83013
	49%	10%	47%	15%	47%	47%
grade 1 events	532	217	446	171	464	463
	0%	0%	0%	0%	0%	0%
grade 2 events	21740	160610	27449	114318	28622	25723
	13%	40%	15%	26%	14%	14%
grade 3 events	9011	11104	9906	28286	10635	9454
	5%	2%	5%	6%	5%	5%
grade 4 events	9039	10909	9774	27452	10841	9514
	5%	2%	5%	6%	5%	5%
grade 5 events	1592	7179	1747	7627	1963	1708
	1%	1%	0%	1%	1%	0%
grade 6 events	17377	112082	25424	140414	24224	22272
	10%	27%	13%	32%	12%	12%
grade 7 events	20639	57477	21009	48444	23034	20915
	12%	14%	11%	11%	12%	12%

2.2 Compared Parameters

Parameter	Planned	Actual	Parameter	Planned	Actual
Instrument	ACIS	ACIS	Obspar format version number	6	6
Detector	ACIS-456789	ACIS-456789	Obspar file type	PREDICTED	ACTUAL
Grating	NONE	NONE	Obspar update status	NONE	UPDATED
Data mode	FAINT	FAINT	On-chip summing requested	N	N
Observation mode	SECONDARY	SECONDARY	Subarray requested	NONE	NONE
Pointing RA	0	42.62945710632939	Alternating exposures requested	N	N
Pointing Dec	0	-28.88762612306902	Primary exposure time	0.000000	3.2
Pointing Roll	0.0	352.78249459428			
SIM focus pos (mm)	-0.684267	-1.523540733526241			
SIM defocus (mm)	0	0.009795905878055677			
SIM translation stage pos (mm)	-190.132523	250.4635187648994			
SIM translation stage offset (mm)	0	-0.007540371344731511			
Observation start time	153550160.866191	153550159.84147			
Observation start date	2002-11-13T04:49:21	2002-11-13T04:49:19			
Observation end time	153574676.817212	153574675.79248			
Observation end date	2002-11-13T11:37:57	2002-11-13T11:37:55			
Read mode	TIMED	TIMED			

2.3 Aspect

2.4 Star Slots

2.5 FID Slots

A Summary

A.1 Status

V&V Scientist	Jen Lauer
V&V Date (YYYY-MM-DD)	2006.10.10
V&V Edition	1
V&V Disposition and Status	OK
V&V Charge Time	8.43519996

A.2 Comments