

V&V Reference Report

L2 ASCDS Version : 8.5.1.1

Observation 6042 - L2 Version 3
Chandra X-Ray Center

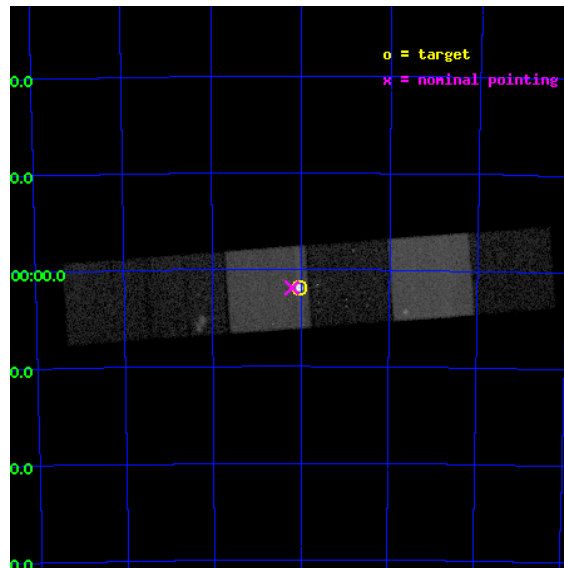
L2 Processing Date : Dec 22 2012

Contents

1	Front	2
2	OBI	3
2.1	OBI	3
2.1.1	Images	3
2.1.2	Bias	3
2.1.3	Parameters	4
2.1.4	Events	4
2.2	Compared Parameters	5
2.3	Aspect	6
2.4	Star Slots	9
2.4.1	Slot 3	9
2.4.2	Slot 4	10
2.4.3	Slot 5	11
2.4.4	Slot 6	12
2.4.5	Slot 7	13
2.5	FID Slots	14
2.5.1	Slot 0	14
2.5.2	Slot 1	15
2.5.3	Slot 2	16
A	Summary	17
A.1	Status	17
A.2	Comments	17

1 Front

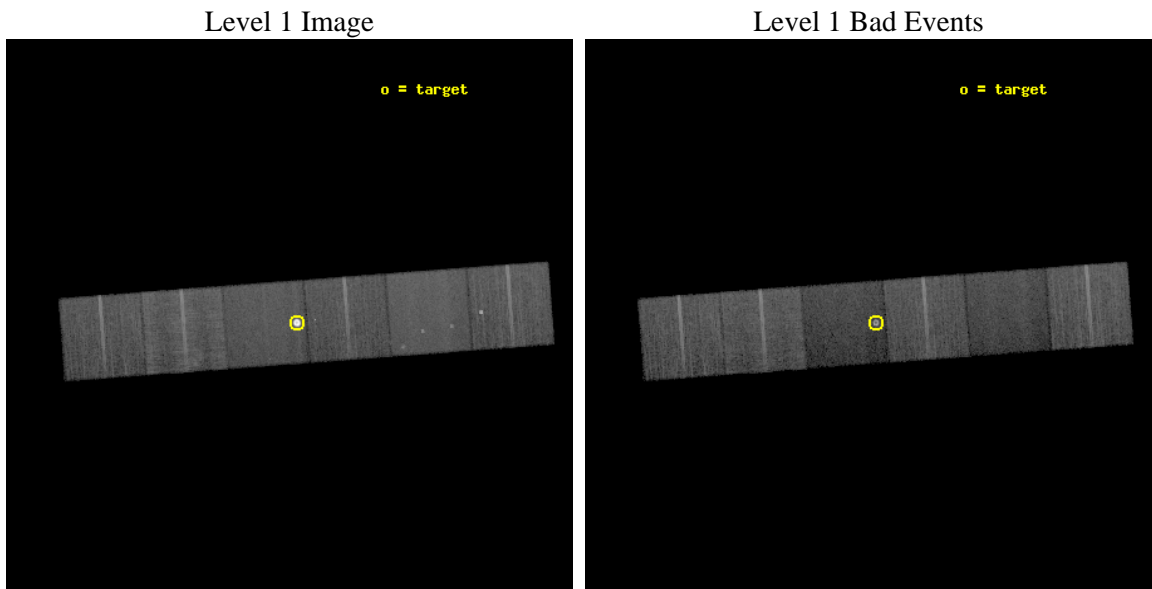
seq_num	590369	Sequence number
obs_id	6042	Observation id
title	AO6B ACIS-S Calibration Observations of E0102-72	Proposal title
observer	Dr. CXC Calibration	Principal investigator
object	E0102-72[S3,-120,1,0,0]	Source name
dtcycle	0	
cycle	P	events from which exps? Prim/Second/Both
ra_targ	16.01	Observer's specified target RA [deg]
dec_targ	-72.032028	Observer's specified target Dec [deg]
ra_nom	16.051239948392	Nominal RA [deg]
dec_nom	-72.03135076319	Nominal Dec [deg]
roll_nom	175.7140987518	Nominal Roll [deg]
revision	3	Processing version of data
ontime	19145.599928677	Sum of GTIs [s]
livetime	18903.166814284	Livetime [s]
ontime4	19145.599928677	Sum of GTIs [s]
ontime5	19145.599928677	Sum of GTIs [s]
ontime6	19142.358958393	Sum of GTIs [s]
ontime7	19145.599928677	Sum of GTIs [s]
ontime8	19145.599928677	Sum of GTIs [s]
ontime9	19145.599928677	Sum of GTIs [s]
l2events	290721	Number of level 2 events



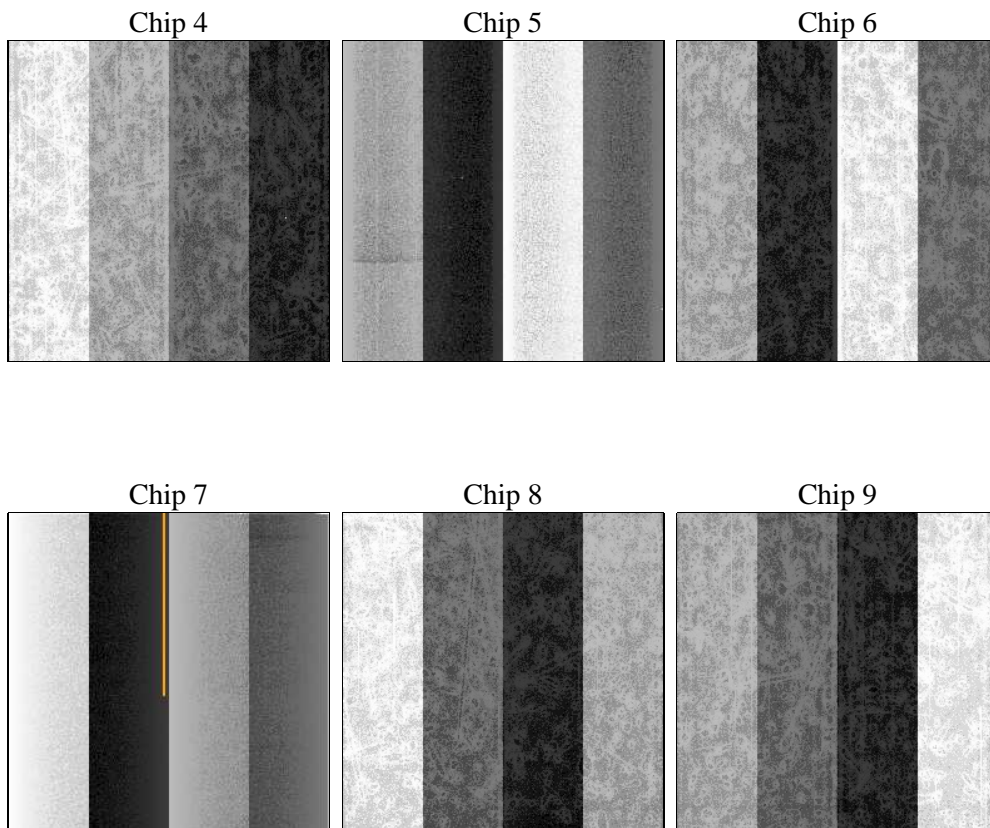
2 OBI

2.1 OBI

2.1.1 Images



2.1.2 Bias



2.1.3 Parameters

obi_num	0	Obi number	sched_exp_time	19000.000000	[s] Scheduled observation exposure time
ascdsver	8.5.1.1	Processing system revision	ontime	19145.599928677	Sum of GTIs [s]
caldsver	4.5.5	 	ontime4	19145.599928677	Sum of GTIs [s]
date	2012-12-22T01:56:12	Date and time of file creation	ontime5	19145.599928677	Sum of GTIs [s]
revision	3	Processing version of data	ontime6	19142.358958393	Sum of GTIs [s]
			ontime7	19145.599928677	Sum of GTIs [s]
			ontime8	19145.599928677	Sum of GTIs [s]
			ontime9	19145.599928677	Sum of GTIs [s]
			l1events	884928	Number of level 1 events

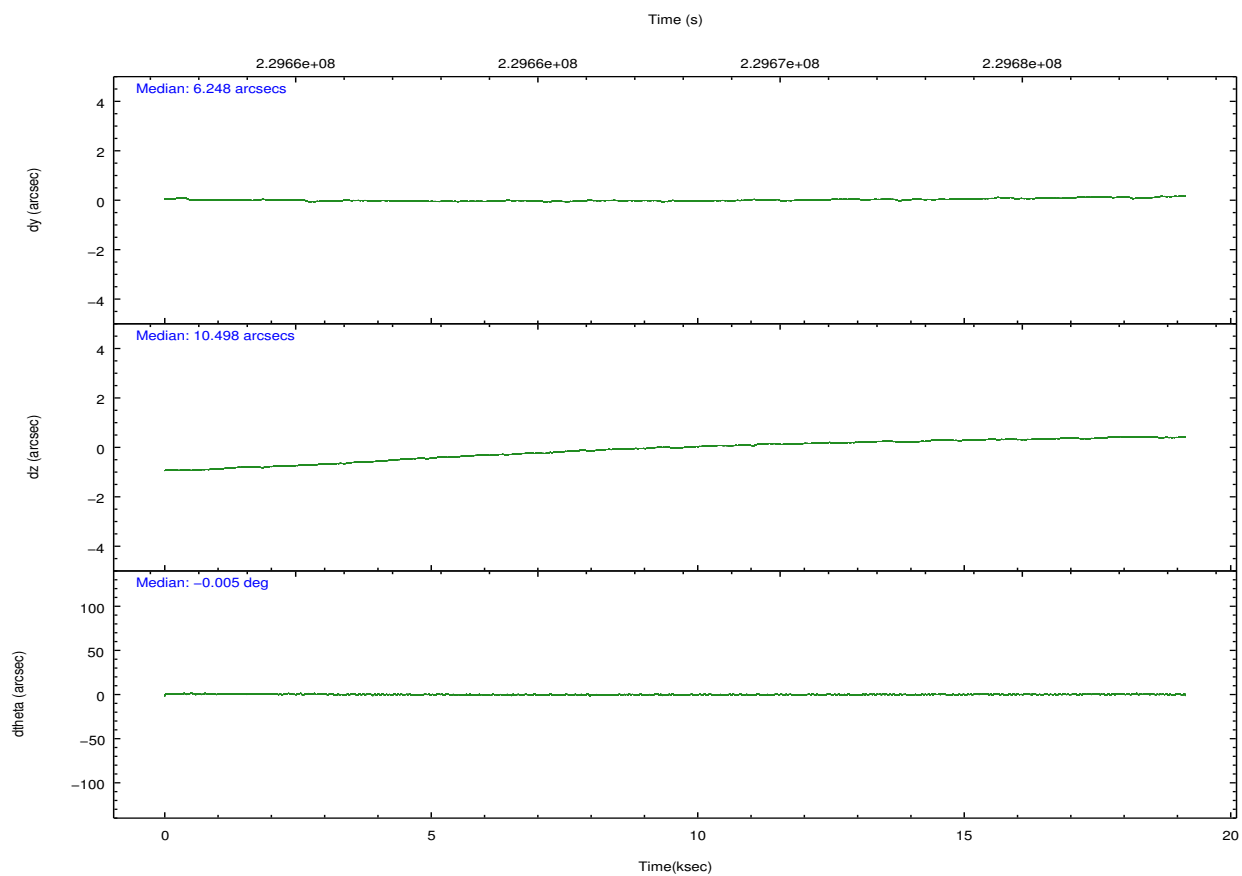
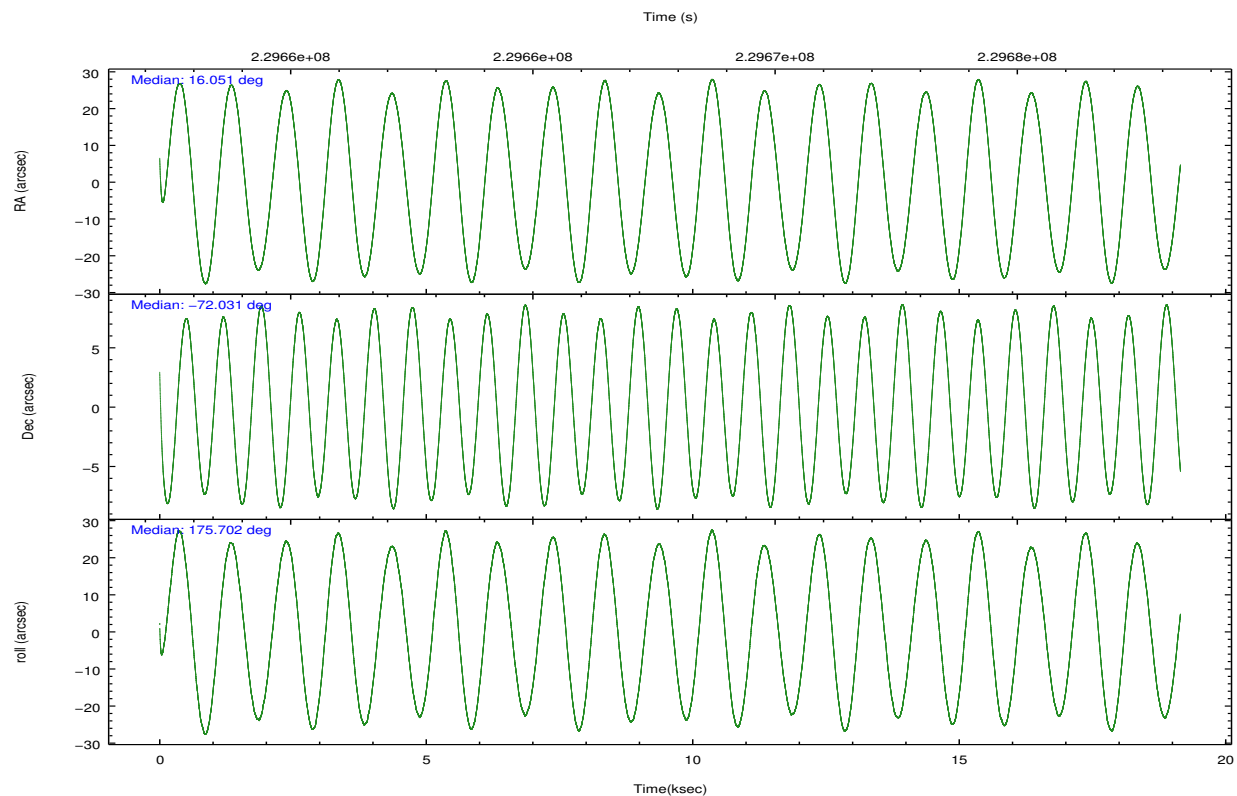
2.1.4 Events

	ccd 4	ccd 5	ccd 6	ccd 7	ccd 8	ccd 9		ccd 4	ccd 5	ccd 6	ccd 7	ccd 8	ccd 9
level 1 events	136001	138073	116395	242529	141398	110532	grade 0 events	7945	6997	5228	45020	9930	3983
rejected events	120658	65838	103569	60103	107828	99237		5%	5%	4%	18%	7%	3%
rejected %	88%	47%	88%	24%	76%	89%	grade 1 events	109	173	63	870	106	82
								0%	0%	0%	0%	0%	0%
							grade 2 events	2959	21854	2668	48136	7877	2437
								2%	15%	2%	19%	5%	2%
							grade 3 events	1337	3636	1346	21286	3593	1364
								0%	2%	1%	8%	2%	1%
							grade 4 events	1261	3506	1280	20830	3392	1257
								0%	2%	1%	8%	2%	1%
							grade 5 events	3846	11618	3892	14096	5793	4360
								2%	8%	3%	5%	4%	3%
							grade 6 events	1923	36655	2373	48104	8993	2316
								1%	26%	2%	19%	6%	2%
							grade 7 events	116621	53634	99545	44187	101714	94733
								85%	38%	85%	18%	71%	85%

2.2 Compared Parameters

Parameter	Planned	Actual	Parameter	Planned	Actual
Instrument	ACIS	ACIS	Obspar format version number	7	7
Detector	ACIS-456789	ACIS-456789	Obspar file type	PREDICTED	ACTUAL
Grating	NONE	NONE	Obspar update status	NONE	UPDATED
Data mode	VFAINT	VFAINT	Number of optional ACIS chips dropped	0	0
Observation mode	POINTING	POINTING	On-chip summing requested	N	N
[deg] Pointing RA	16.130218	16.05123994839207	Subarray requested	NONE	NONE
[deg] Pointing Dec	-72.019173	-72.03135076318985	Alternating exposures requested	N	N
[deg] Pointing Roll	175.632596	175.7140987517972	[s] Primary exposure time	0.000000	3.2
[s] Window start time (MET)	228700864.184000	228700864.184000			
[s] Window stop time (MET)	231206464.184000	231206464.184000			
[mm] SIM focus pos	-0.684267	-0.6828225247311905			
[mm] SIM defocus	0	0.001444936568705701			
[mm] SIM translation stage pos	-190.132523	-190.1400660498719			
[mm] SIM translation stage offset	0	0.00754346686406393			
[s] Observation start time (MET)	229658407.184000	229657302.34473			
Observation start date	2005-04-12T01:59:03	2005-04-12T01:41:42			
[s] Observation end time (MET)	229677407.184000	229678824.27071			
Observation end date	2005-04-12T07:15:43	2005-04-12T07:40:24			
Read mode	TIMED	TIMED			

2.3 Aspect

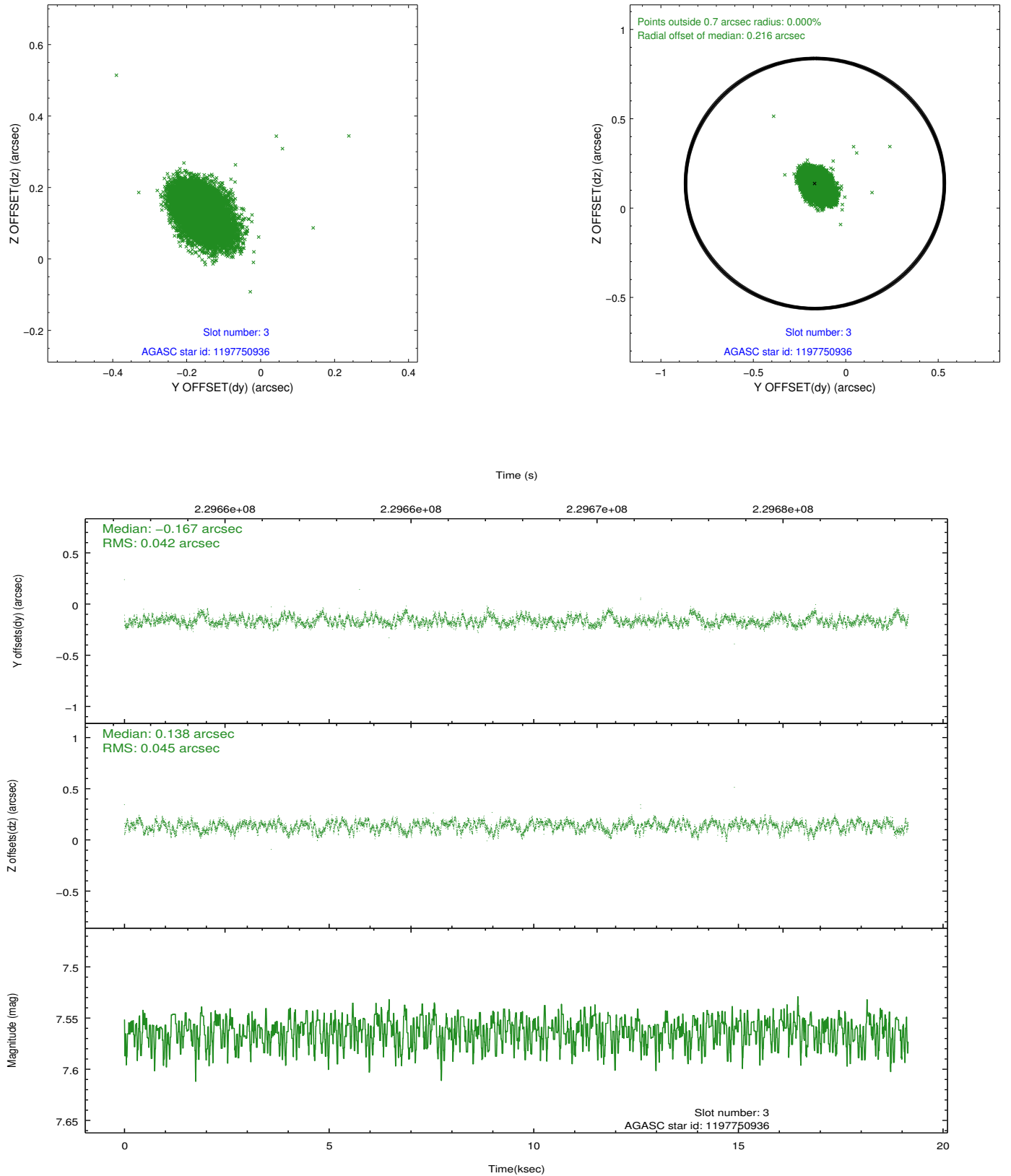


Slot Statistics

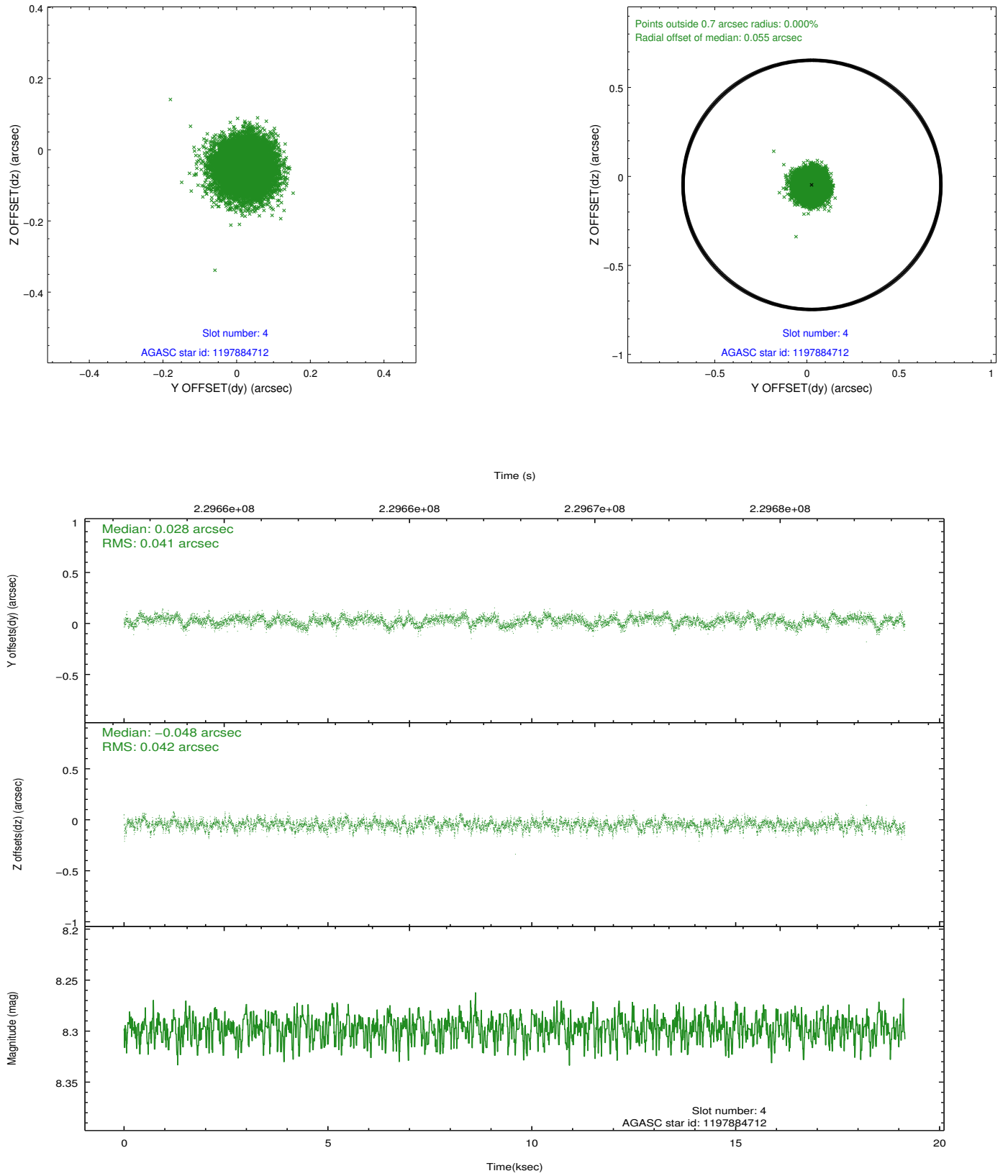
slot	status	id	mag	n_pts	med_dy	med_dz	dr1	dr2	ra	dec	mean_y	mean_z
0	FID	ACIS-S-2	7.10	4672	-0.067	-0.019	0.009	0.015	0.000000	0.000000	-759.03	-1731.68
1	FID	ACIS-S-4	7.21	4671	0.094	0.038	0.009	0.016	0.000000	0.000000	2154.28	176.70
2	FID	ACIS-S-5	7.23	4672	-0.057	-0.010	0.010	0.019	0.000000	0.000000	-1811.64	170.49
3	GUIDE	1197750936	7.56	9344	-0.167	0.138	0.064	0.107	15.387940	-71.549550	971.98	-1615.36
4	GUIDE	1197884712	8.30	9336	0.028	-0.048	0.063	0.100	16.087398	-72.252690	-16.99	841.85
5	GUIDE	1197885104	9.36	9337	0.142	0.024	0.072	0.118	17.845067	-72.189368	-1930.78	494.24
6	GUIDE	1197885328	7.25	9344	-0.001	0.084	0.056	0.091	16.283090	-71.733943	-94.06	-1036.71
7	GUIDE	1198283128	7.78	9342	-0.006	-0.195	0.051	0.080	17.272580	-72.642428	-1395.31	2155.04

2.4 Star Slots

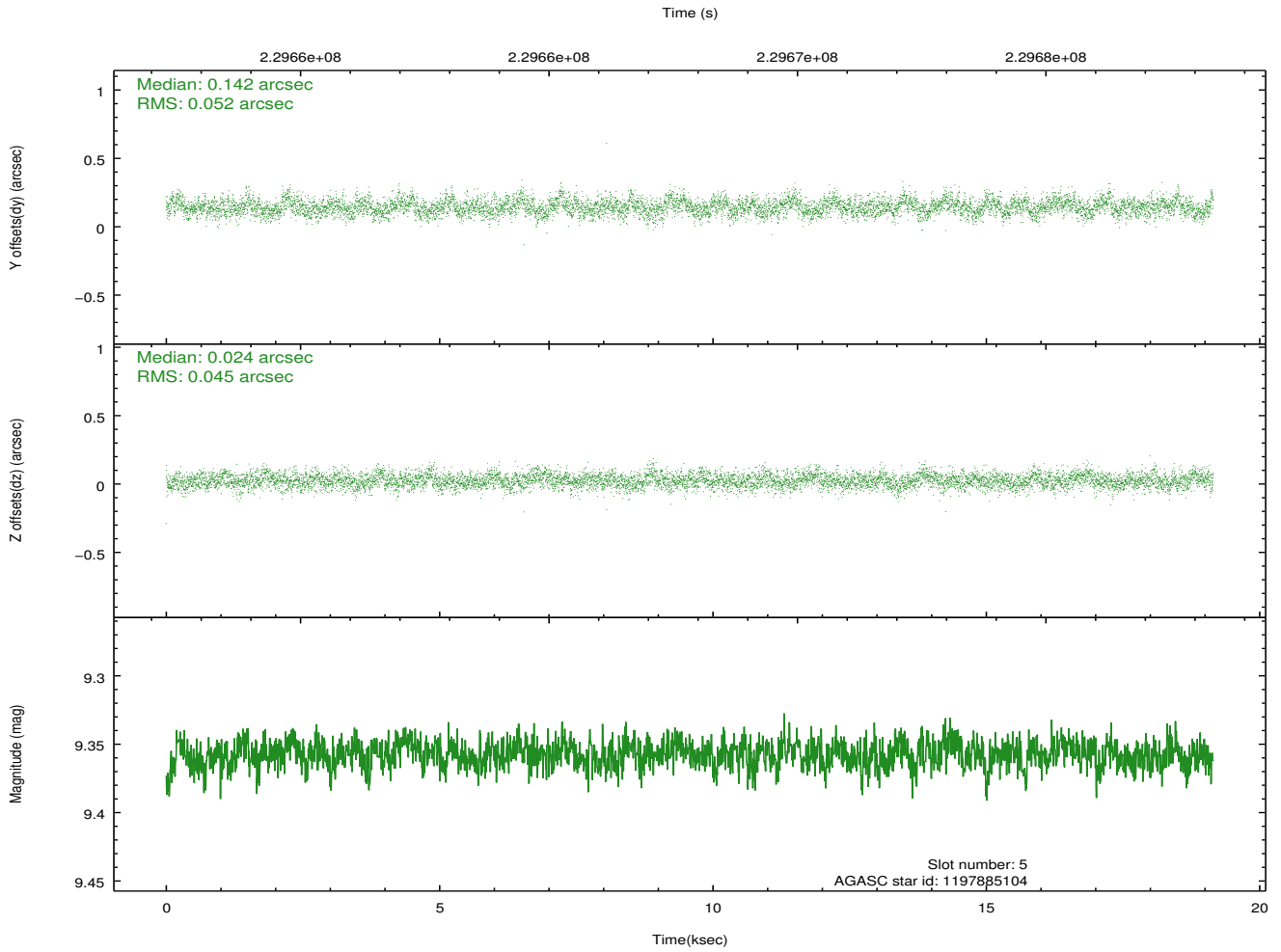
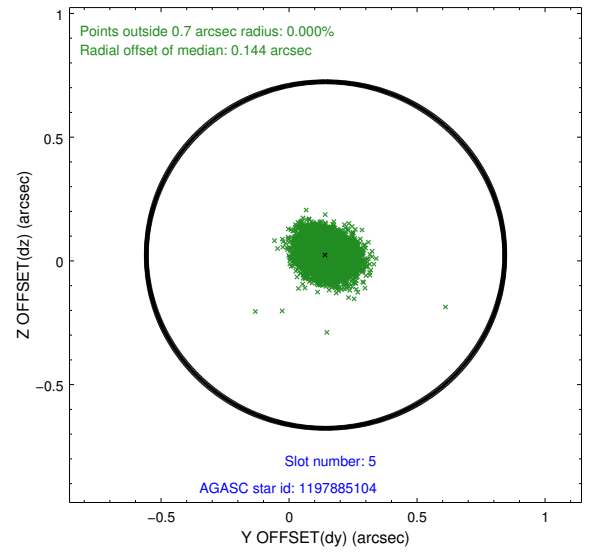
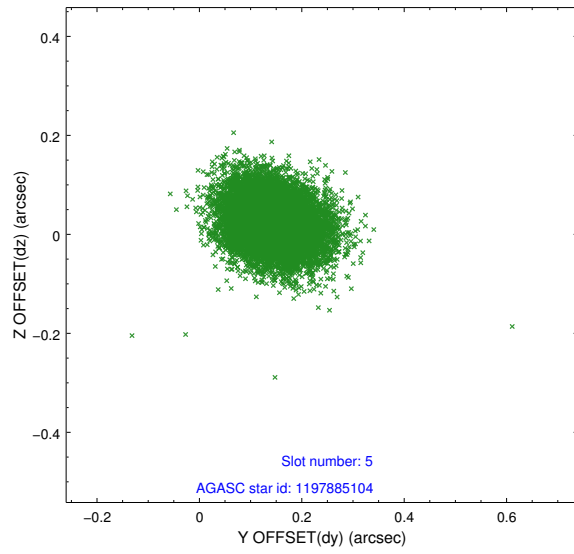
2.4.1 Slot 3



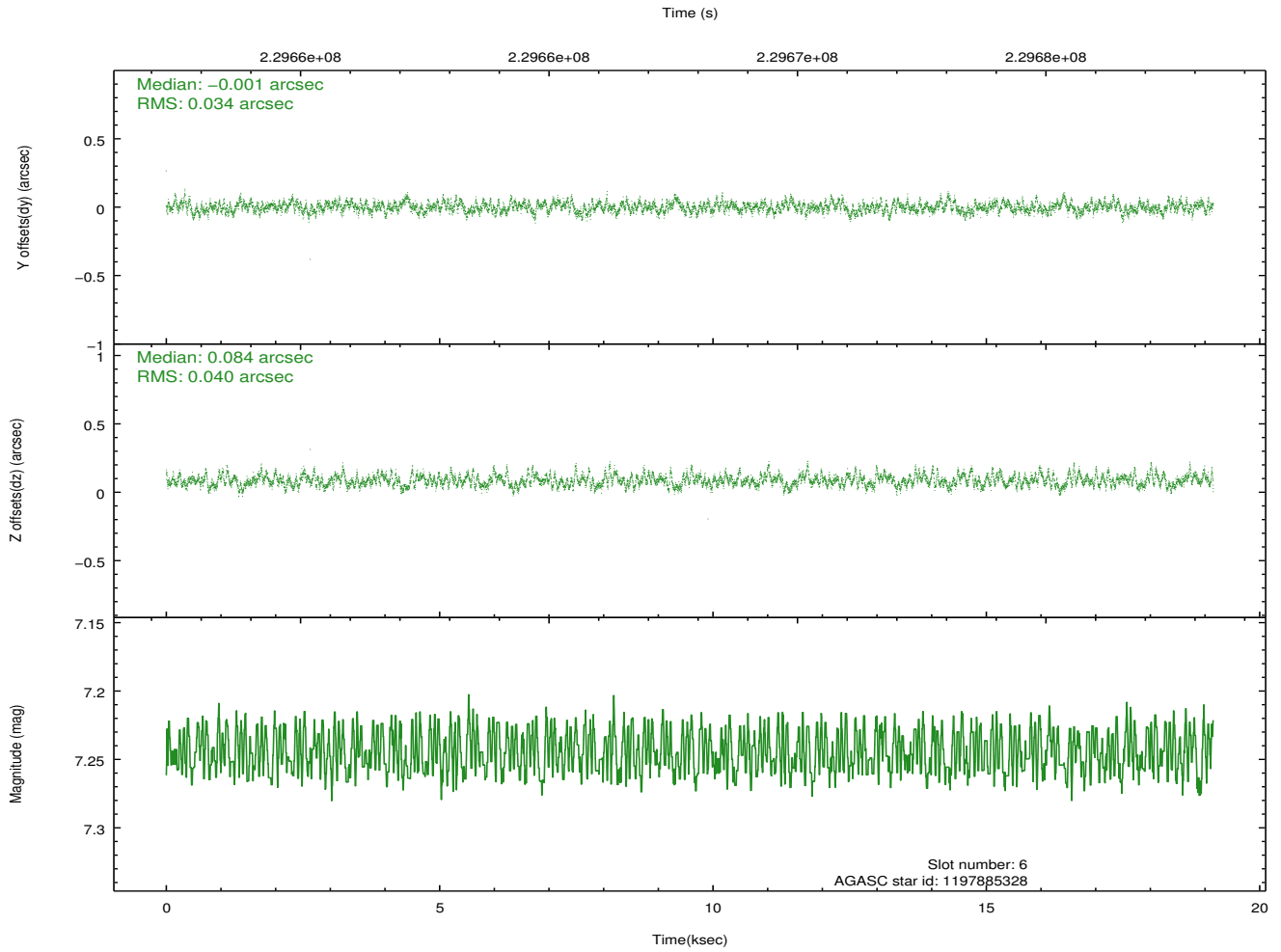
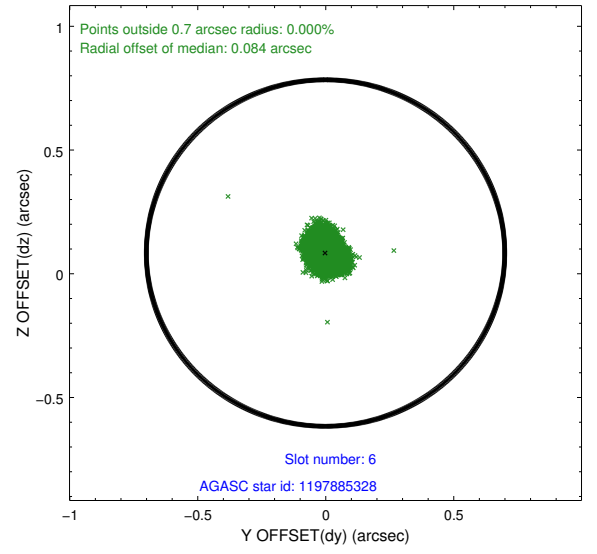
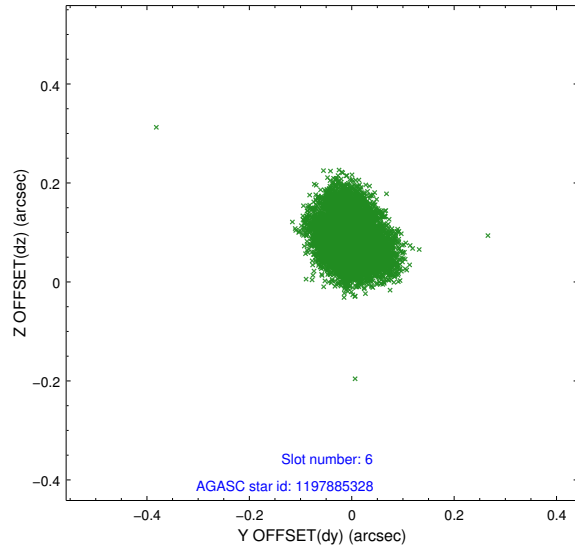
2.4.2 Slot 4



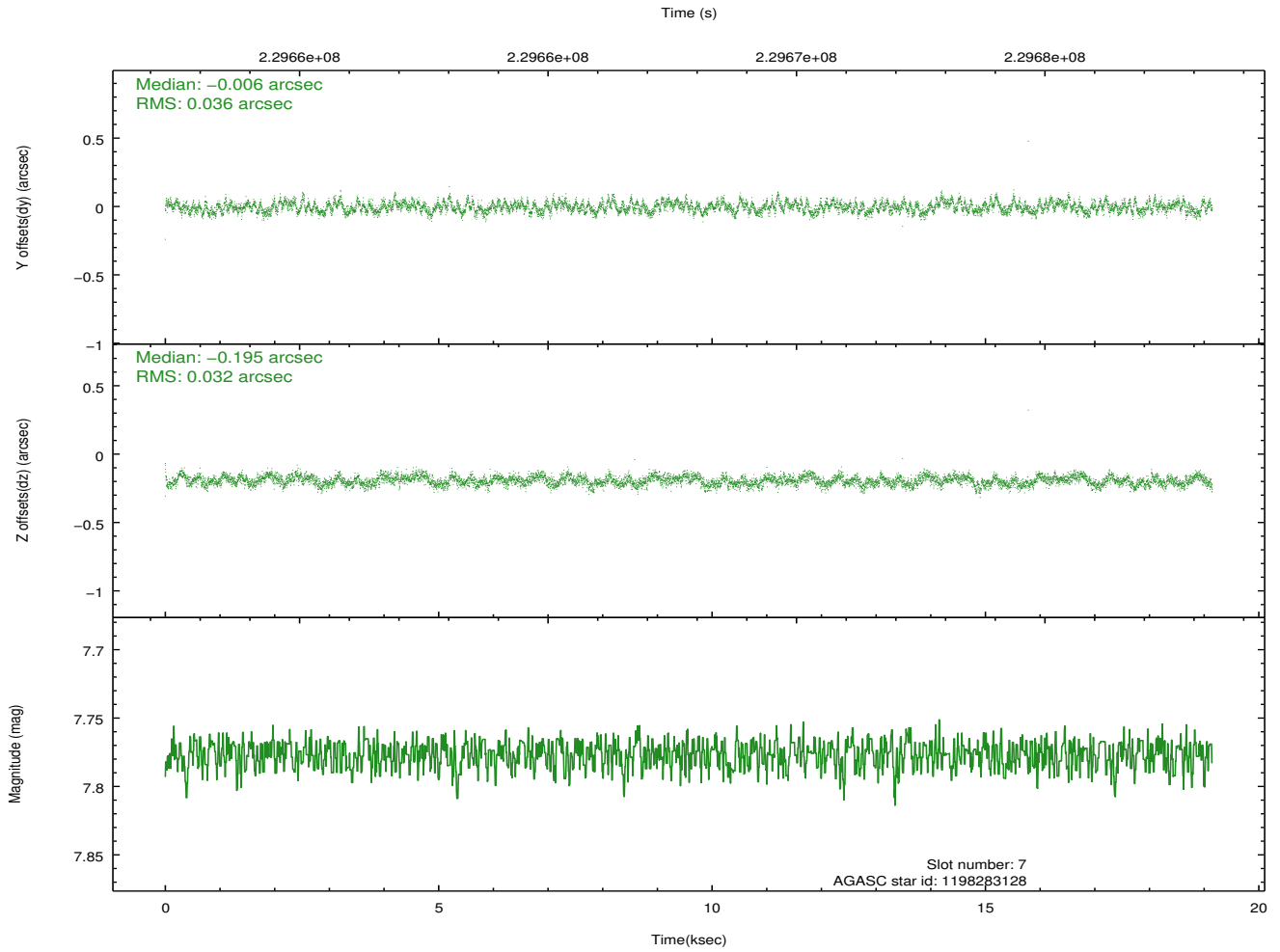
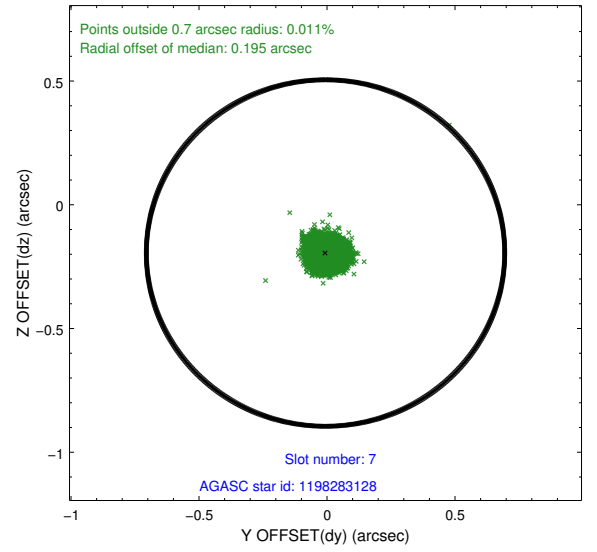
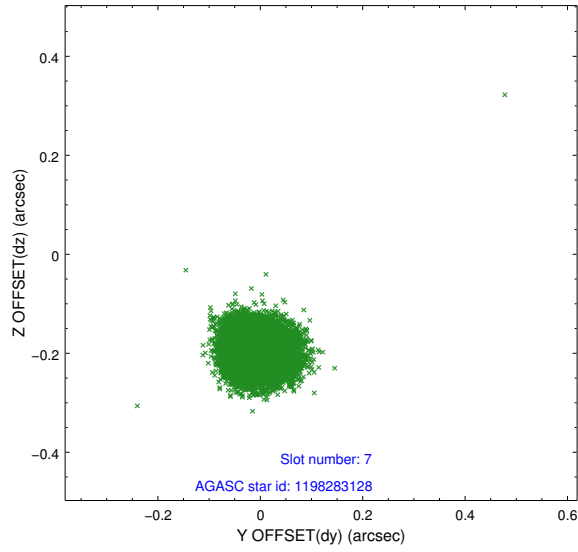
2.4.3 Slot 5



2.4.4 Slot 6

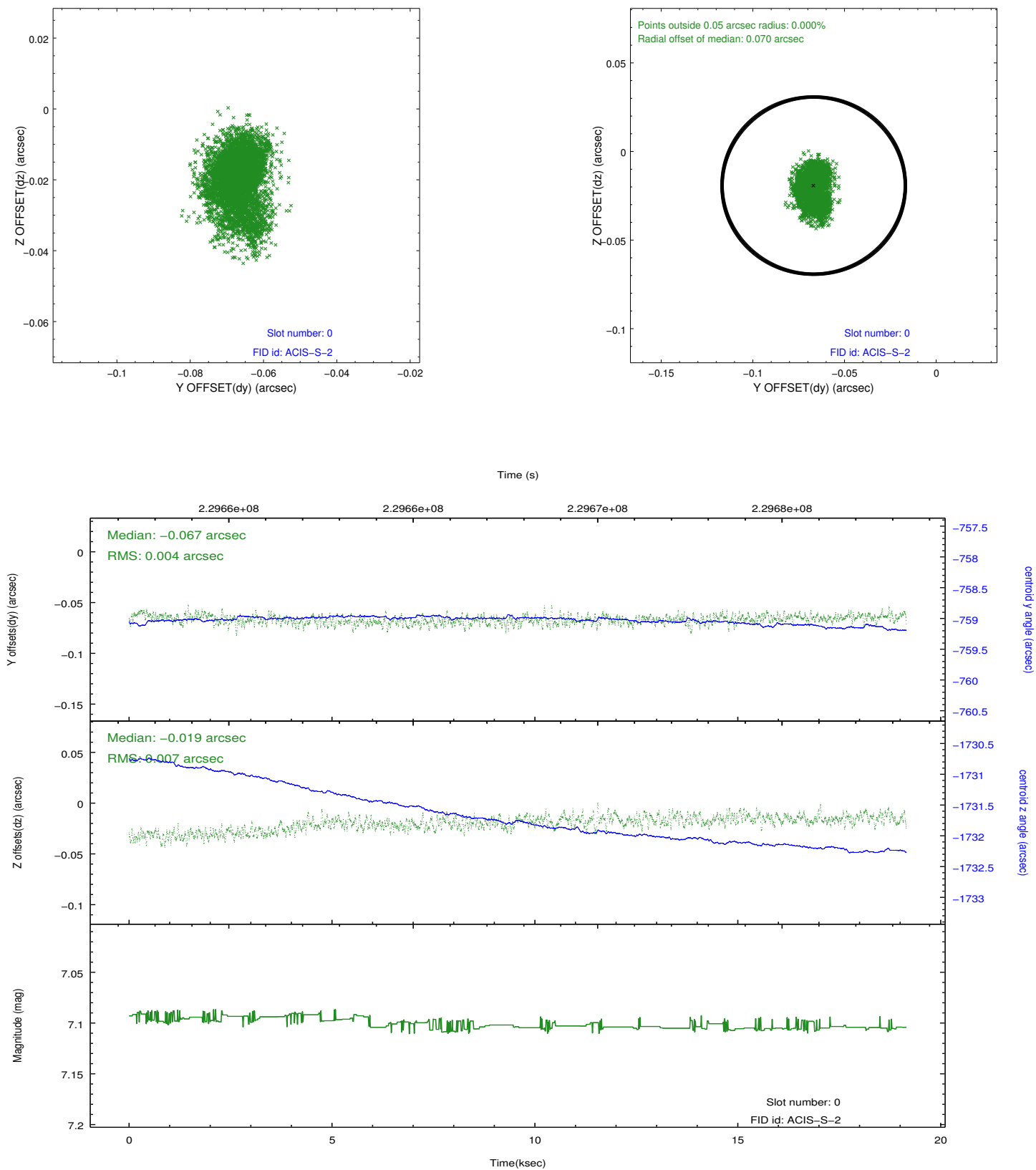


2.4.5 Slot 7

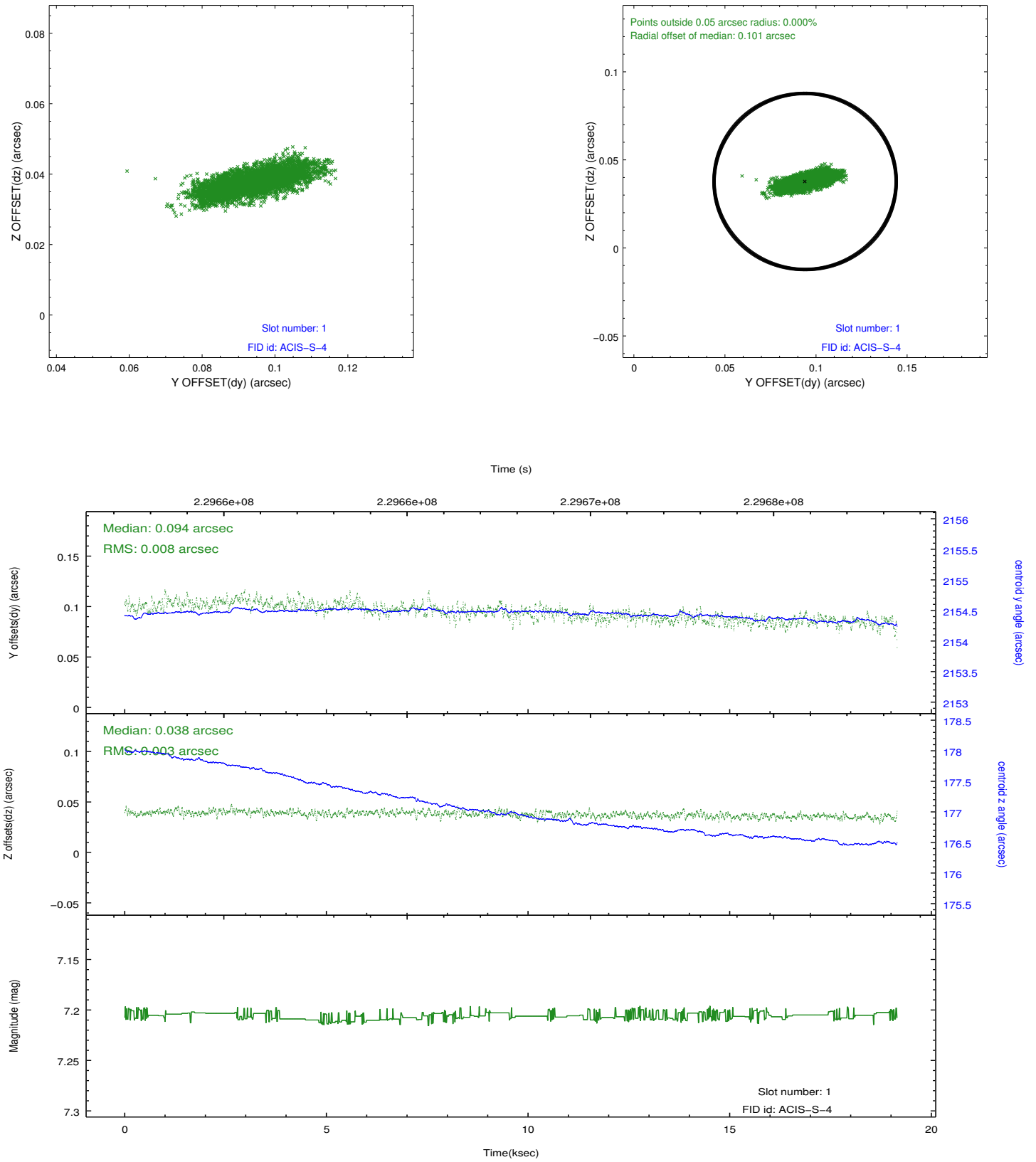


2.5 FID Slots

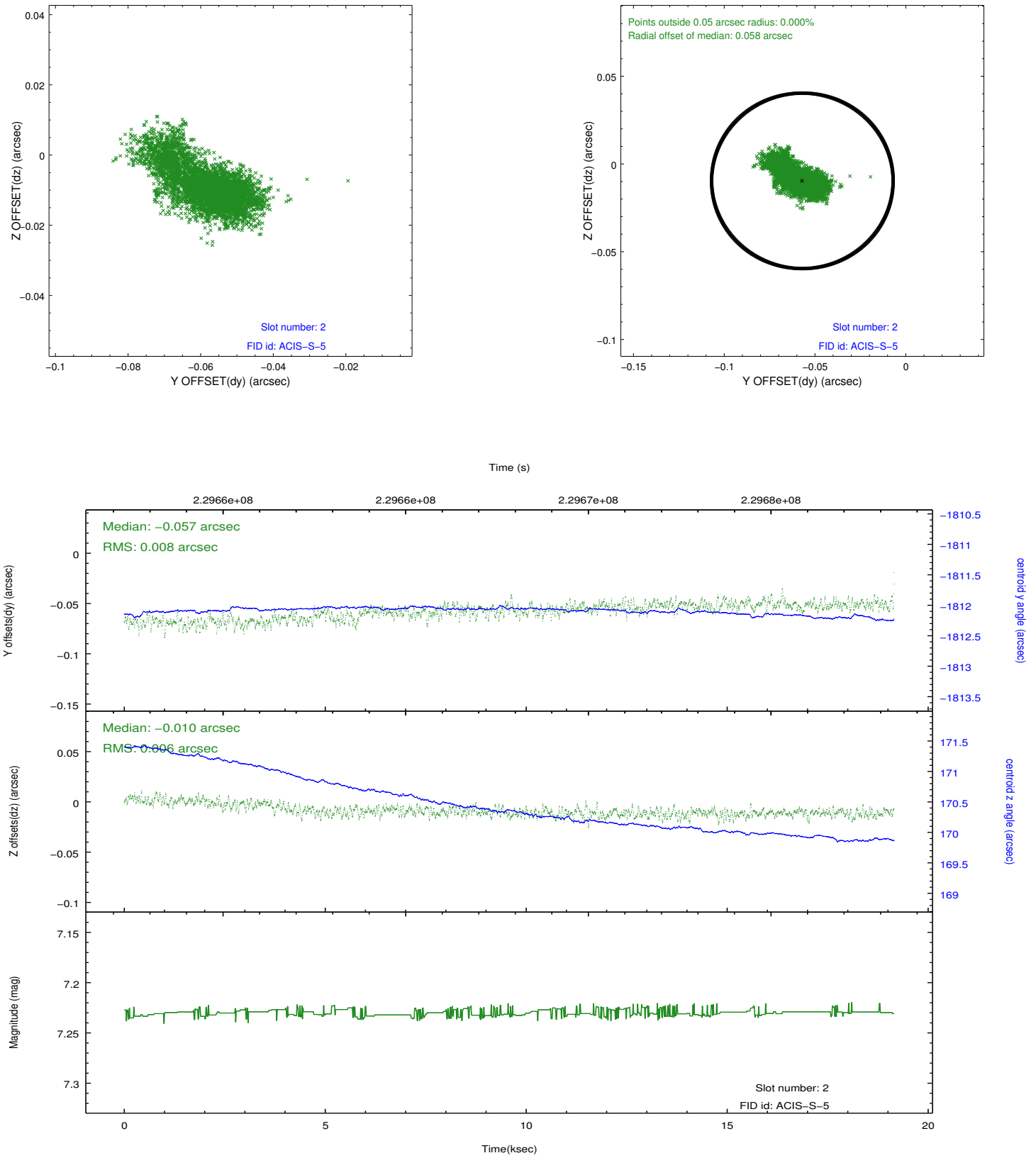
2.5.1 Slot 0



2.5.2 Slot 1



2.5.3 Slot 2



A Summary

A.1 Status

V&V Scientist	Jen Lauer
V&V Date (YYYY-MM-DD)	2013.01.15
V&V Edition	1
V&V Disposition and Status	OK
V&V Charge Time	19.14559

A.2 Comments

Window constraint satisfied.