

# V&V Reference Report

## L2 ASCDS Version : 7.6.7.2

Observation 60392 - L2 Version 001  
Chandra X-Ray Center

L2 Processing Date : Jun 4 2006

## Contents

<b>1</b>	<b>Front</b>	<b>2</b>
<b>2</b>	<b>OBI</b>	<b>3</b>
2.1	OBI . . . . .	3
2.1.1	Images . . . . .	3
2.1.2	Bias . . . . .	3
2.1.3	Parameters . . . . .	4
2.1.4	Events . . . . .	4
2.2	Compared Parameters . . . . .	5
2.3	Aspect . . . . .	6
2.4	Star Slots . . . . .	8
2.5	FID Slots . . . . .	8
<b>A</b>	<b>Summary</b>	<b>9</b>
A.1	Status . . . . .	9
A.2	Comments . . . . .	9

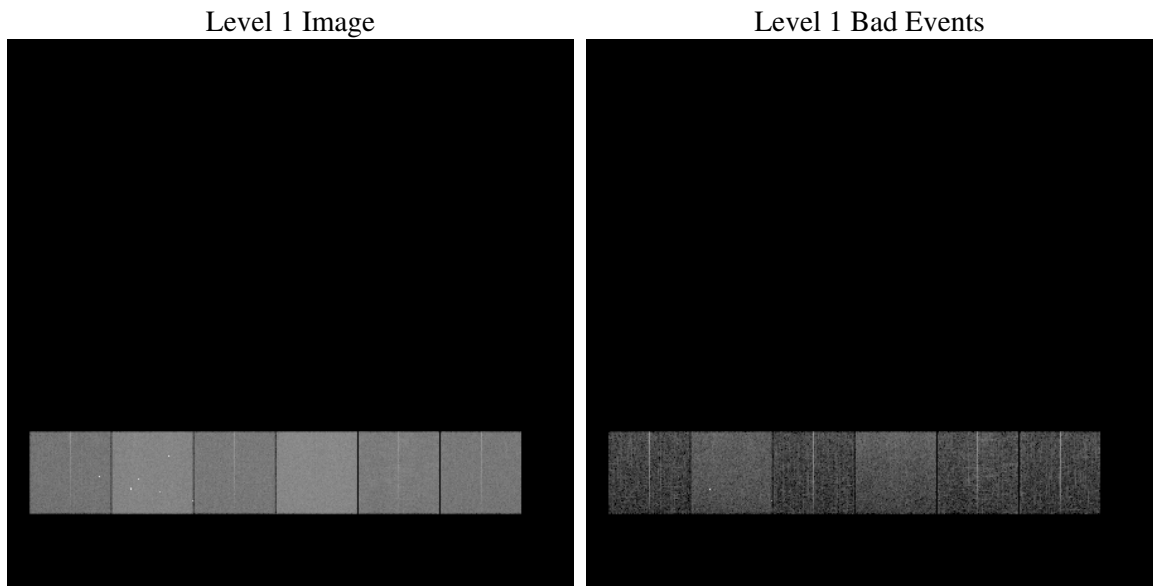
# 1 Front

seq_num	&#160
obs_id	60392
title	ACIS-456789 diagnostics
observer	CHANDRA engineering request/realtime commanding
object	&#160
dtcycle	0
cycle	P
ra_targ	0.0
dec_targ	0.0
ra_nom	118.7294474938
dec_nom	-21.291985893622
roll_nom	343.42284785137
revision	2
ontime	7801.2189420462
livetime	7702.4352104719
ontime4	4719.1759746969
ontime5	7801.2599820495
ontime6	5065.9203677177
ontime7	7801.2189420462
ontime8	5221.5698775053
ontime9	5036.6280269921
l2events	1116718

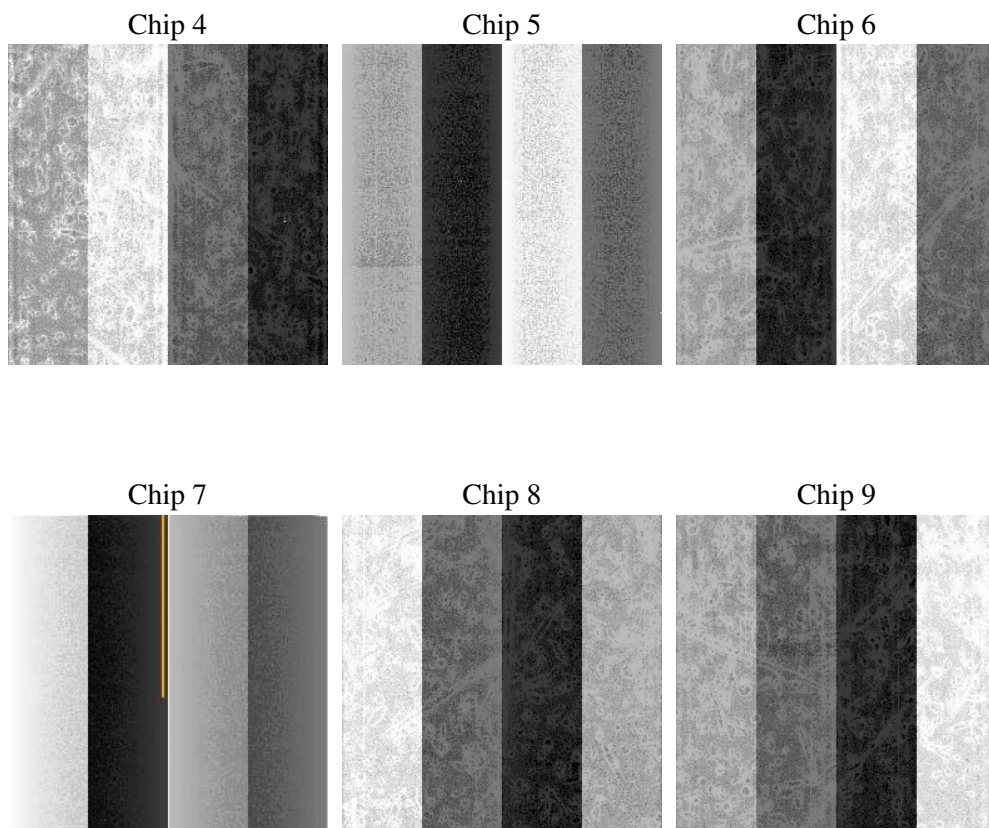
## 2 OBI

### 2.1 OBI

#### 2.1.1 Images



#### 2.1.2 Bias



### 2.1.3 Parameters

obi_num	0
ascdsver	7.6.7.2
caldbver	3.2.2
date	2006-06-04T23:45:58
revision	2

sched_exp_time	0.0
ontime	7804.3347407877
ontime4	4722.1686534286
ontime5	7804.3347407877
ontime6	5068.9540864527
ontime7	7804.3347407877
ontime8	5224.5215162635
ontime9	5039.784865737
l1events	1417002

### 2.1.4 Events

	ccd 4	ccd 5	ccd 6	ccd 7	ccd 8	ccd 9
level 1 events	183952	293278	207077	313304	220198	199193
rejected events	31366	55230	31568	48174	36928	32071
rejected %	17%	18%	15%	15%	16%	16%

	ccd 4	ccd 5	ccd 6	ccd 7	ccd 8	ccd 9
grade 0 events	88968	29318	96045	49255	100604	92854
	48%	9%	46%	15%	45%	46%
grade 1 events	606	133	446	112	463	500
	0%	0%	0%	0%	0%	0%
grade 2 events	24157	112597	30168	79002	32042	28493
	13%	38%	14%	25%	14%	14%
grade 3 events	10261	7583	10848	20236	11919	10598
	5%	2%	5%	6%	5%	5%
grade 4 events	10096	7347	10970	19849	11799	10689
	5%	2%	5%	6%	5%	5%
grade 5 events	2121	5631	2258	6235	2637	2305
	1%	1%	1%	1%	1%	1%
grade 6 events	19202	81290	27579	96900	27022	24603
	10%	27%	13%	30%	12%	12%
grade 7 events	28541	49379	28763	41715	33712	29151
	15%	16%	13%	13%	15%	14%

## 2.2 Compared Parameters

Parameter	Planned	Actual	Parameter	Planned	Actual
Instrument	ACIS	ACIS	Obspar format version number	6	6
Detector	ACIS-456789	ACIS-456789	Obspar file type	PREDICTED	ACTUAL
Grating	NONE	NONE	Obspar update status	NONE	UPDATED
Data mode	FAINT	FAINT	On-chip summing requested	N	N
Observation mode	SECONDARY	SECONDARY	Subarray requested	NONE	NONE
Pointing RA	0	118.729447493798	Alternating exposures requested	N	N
Pointing Dec	0	-21.29198589362219	Primary exposure time	0.000000	3.2
Pointing Roll	0.0	343.4228478513668			
SIM focus pos (mm)	-0.684267	-0.6828225247311905			
SIM defocus (mm)	0	0.8505141146731063			
SIM translation stage pos (mm)	-190.132523	250.466033080201			
SIM translation stage offset (mm)	0	-0.01005468664627074			
Observation start time	191670418.838365	191670417.81365			
Observation start date	2004-01-28T09:46:59	2004-01-28T09:46:57			
Observation end time	191688087.789136	191688086.76442			
Observation end date	2004-01-28T14:41:28	2004-01-28T14:41:26			
Read mode	TIMED	TIMED			

## 2.3 Aspect



## **2.4 Star Slots**

## **2.5 FID Slots**



## A Summary

### A.1 Status

V&V Scientist	Jen Lauer
V&V Date (YYYY-MM-DD)	2006.06.05
V&V Edition	1
V&V Disposition and Status	OK
V&V Charge Time	7.80121894

### A.2 Comments