

# V&V Reference Report

## L2 ASCDS Version : 8.4.5

Observation 60352 - L2 Version 3  
Chandra X-Ray Center

L2 Processing Date : Nov 12 2012

## Contents

<b>1</b>	<b>Front</b>	<b>2</b>
<b>2</b>	<b>OBI</b>	<b>3</b>
2.1	OBI . . . . .	3
2.1.1	Images . . . . .	3
2.1.2	Bias . . . . .	3
2.1.3	Parameters . . . . .	4
2.1.4	Events . . . . .	4
2.2	Compared Parameters . . . . .	5
2.3	Star Slots . . . . .	6
2.4	FID Slots . . . . .	6
<b>A</b>	<b>Summary</b>	<b>7</b>
A.1	Status . . . . .	7
A.2	Comments . . . . .	7

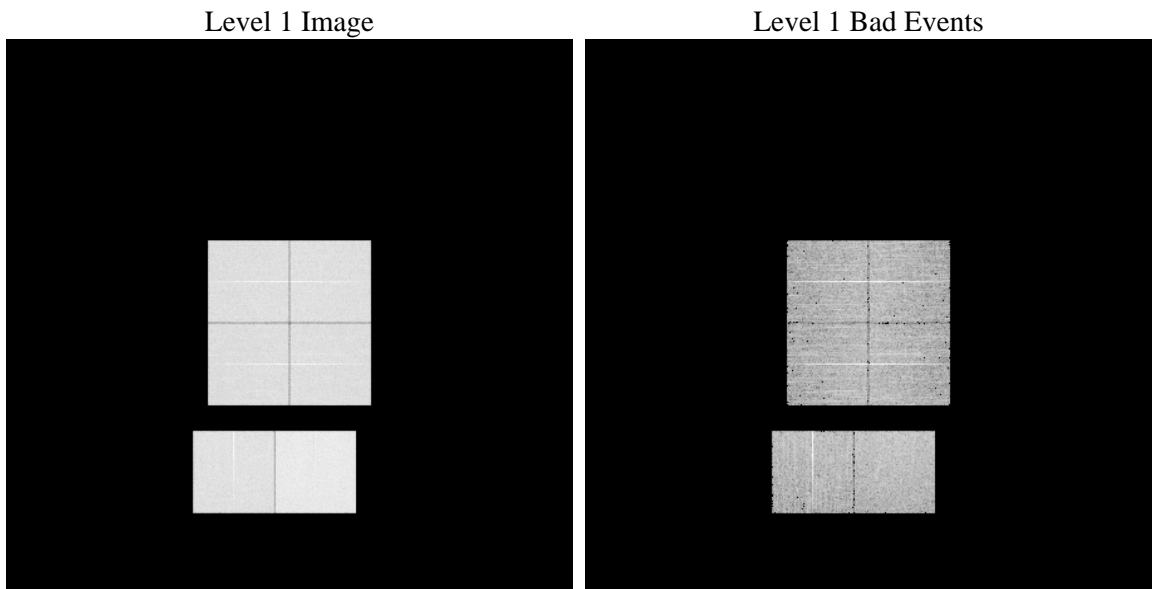
# 1 Front

seq_num	&#160	Sequence number
obs_id	60352	Observation id
title	ACIS-012367 diagnostics	Proposal title
observer	CHANDRA engineering request/realtime commanding	Principal investig
object	&#160	Source name
dtcycle	0	&#160
cycle	P	events from which exps? Prim/Second/Both
ra_targ	0.0	Observer's specified target RA [deg]
dec_targ	0.0	Observer's specified target Dec [deg]
ra_nom	158.0279781581	Nominal RA [deg]
dec_nom	3.9936767377815	Nominal Dec [deg]
roll_nom	314.3597330627	Nominal Roll [deg]
revision	3	Processing version of data
ontime	8463.4760810435	Sum of GTIs [s]
livetime	8356.3064508118	Livetime [s]
ontime0	6113.7301532328	Sum of GTIs [s]
ontime1	6246.5700590909	Sum of GTIs [s]
ontime2	5799.2737757564	Sum of GTIs [s]
ontime3	5925.8361358047	Sum of GTIs [s]
ontime6	6369.6445215642	Sum of GTIs [s]
ontime7	8463.4760810435	Sum of GTIs [s]
l2events	1229566	Number of level 2 events

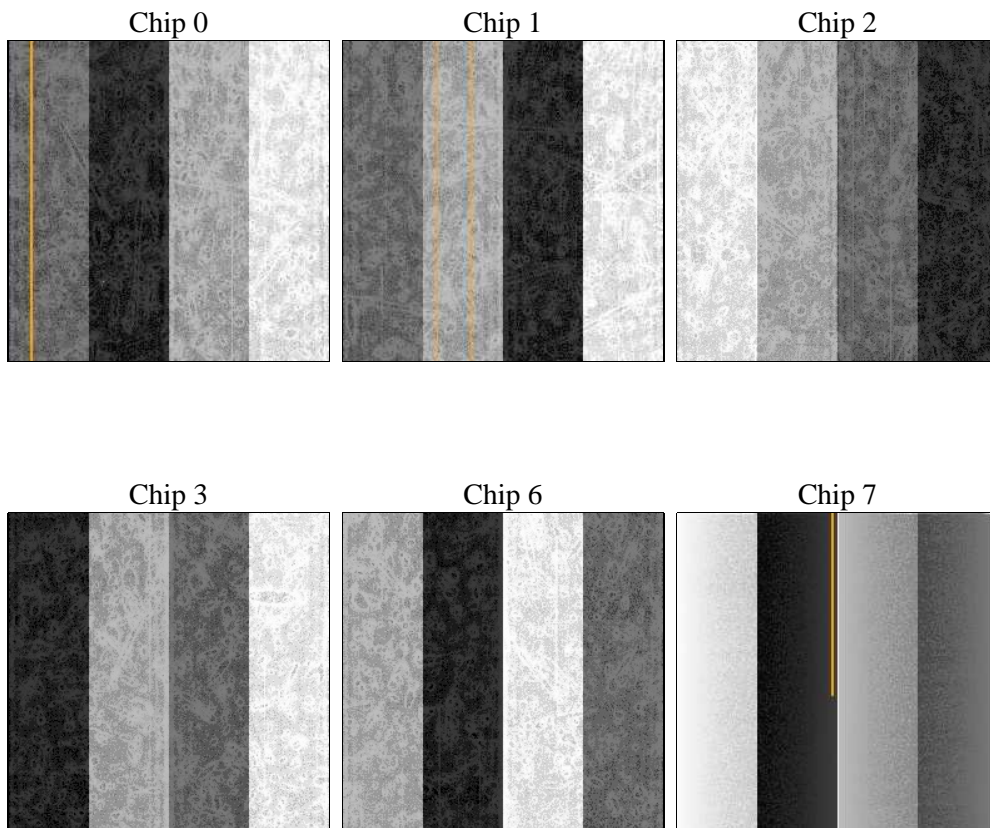
## 2 OBI

### 2.1 OBI

#### 2.1.1 Images



#### 2.1.2 Bias



### 2.1.3 Parameters

obi_num	0	Obi number	sched_exp_time	0.0	[s] Scheduled observation exposure time
ascdsver	8.4.5	Processing system revision	ontime	8463.4760810435	Sum of GTIs [s]
caldsver	4.5.2	&#160	ontime0	6113.7301532328	Sum of GTIs [s]
date	2012-11-12T17:54:41	Date and time of file creation	ontime1	6246.5700590909	Sum of GTIs [s]
revision	3	Processing version of data	ontime2	5799.2737757564	Sum of GTIs [s]
			ontime3	5925.8361358047	Sum of GTIs [s]
			ontime6	6369.6445215642	Sum of GTIs [s]
			ontime7	8463.4760810435	Sum of GTIs [s]
			l1events	1535347	Number of level 1 events

### 2.1.4 Events

	ccd 0	ccd 1	ccd 2	ccd 3	ccd 6	ccd 7		ccd 0	ccd 1	ccd 2	ccd 3	ccd 6	ccd 7
level 1 events	234903	241116	227908	234062	258168	339190	grade 0 events	108717	110300	105770	108996	117177	71527
rejected events	37960	39676	39238	40134	42992	46041		46%	45%	46%	46%	45%	21%
rejected %	16%	16%	17%	17%	16%	13%	grade 1 events	584	514	658	650	549	204
								0%	0%	0%	0%	0%	0%
							grade 2 events	34386	35896	31797	33065	36951	64029
								14%	14%	13%	14%	14%	18%
							grade 3 events	12684	12780	12269	12787	13403	29204
								5%	5%	5%	5%	5%	8%
							grade 4 events	12747	12710	12256	12568	13328	29290
								5%	5%	5%	5%	5%	8%
							grade 5 events	2636	2710	2414	2613	2997	8360
								1%	1%	1%	1%	1%	2%
							grade 6 events	28512	29843	26684	26625	34422	99210
								12%	12%	11%	11%	13%	29%
							grade 7 events	34637	36363	36060	36758	39341	37366
								14%	15%	15%	15%	15%	11%

## 2.2 Compared Parameters

Parameter	Planned	Actual
Instrument	ACIS	ACIS
Detector	ACIS-012367	ACIS-012367
Grating	NONE	NONE
Data mode	FAINT	FAINT
Observation mode	SECONDARY	SECONDARY
[deg] Pointing RA	0	158.027978158105
[deg] Pointing Dec	0	3.993676737781548
[deg] Pointing Roll	0.0	314.3597330627031
[mm] SIM focus pos	-0.782348	-0.6828225247311905
[mm] SIM defocus	0	0.8505141146731063
[mm] SIM translation stage pos	-233.592463	250.4635187648994
[mm] SIM translation stage offset	0	-0.007540371344731511
[s] Observation start time (MET)	194454657.210136	194454656.18543
Observation start date	2004-02-29T15:10:57	2004-02-29T15:10:56
[s] Observation end time (MET)	194476073.561074	194476072.53637
Observation end date	2004-02-29T21:07:54	2004-02-29T21:07:52
Read mode	TIMED	TIMED

Parameter	Planned	Actual
Obspar format version number	7	7
Obspar file type	PREDICTED	ACTUAL
Obspar update status	NONE	UPDATED
On-chip summing requested	N	N
Subarray requested	NONE	NONE
Alternating exposures requested	N	N
[s] Primary exposure time	0.000000	3.2

## 2.3 Star Slots

## 2.4 FID Slots

## A Summary

### A.1 Status

V&V Scientist	Beth Sundheim
V&V Date (YYYY-MM-DD)	2012.12.20
V&V Edition	1
V&V Disposition and Status	OK
V&V Charge Time	8.4634760810435

### A.2 Comments